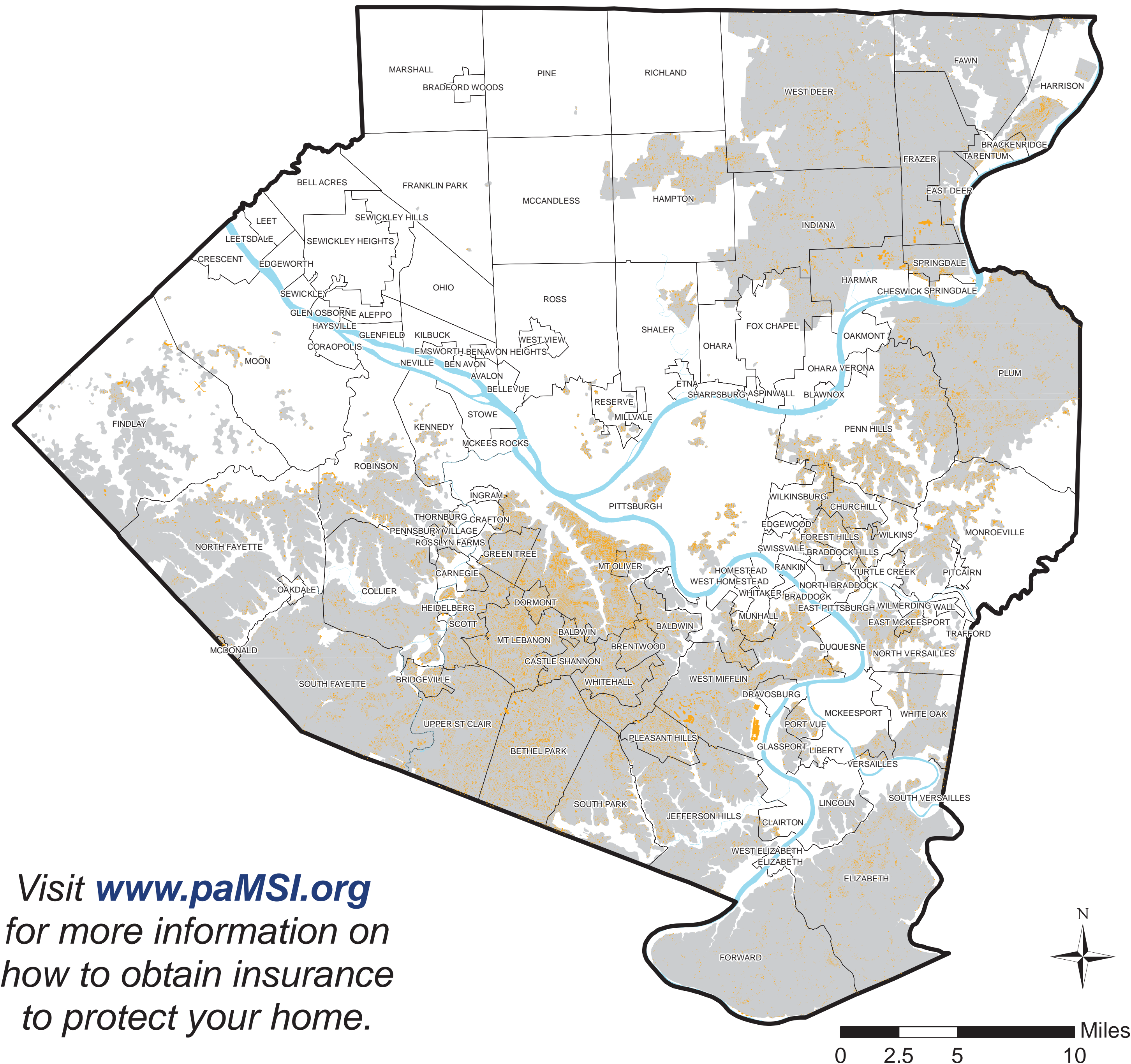







Areas at Risk of Mine Subsidence in Allegheny County



Legend

-  Underground Mined Areas
-  Building Footprints
-  County Boundary
-  Municipal Boundaries
-  Rivers

This map shows areas in Allegheny County, Pennsylvania, where underground coal mining occurred. Mine subsidence is a movement of the ground surface as a result of the collapse or failure of underground mine workings. Damages to structures from mine subsidence may include cracking of foundation walls and floors, cracking of brick veneer, severe tilting, and in some instances, complete structural failure requiring replacement of the building.

Coordinate/Projection System: WGS84 World Mercator

Map Prepared by:

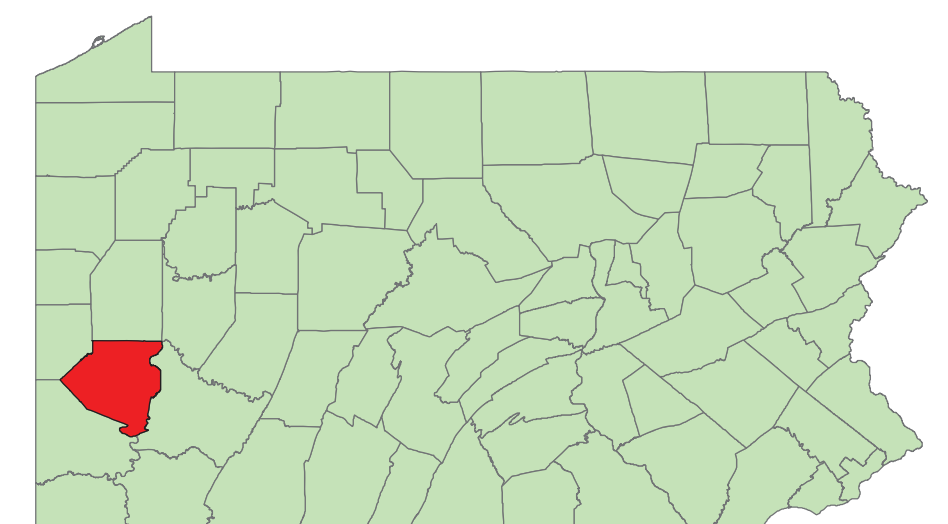


Commonwealth of Pennsylvania
Department of Environmental Protection
California District Office
Mine Subsidence Section
Technical Services Unit
March 2017

The Department assumes no responsibility for the accuracy or completeness of this information. For informational purposes only.

Building Footprint data originated by Allegheny County Division of Computer Services Geographic Information Systems Group.

Location Map



Allegheny County, Pennsylvania