

Volume 37 / No. 4 October-December 2017

## Anne Garrels In Spokane: A Unique View On Foreign Reporting and The Real Russia



Former NPR foreign correspondent Anne Garrels visits Spokane on Nov. 15 for an SPR benefit at the Bing Crosby Theater. She plans to share some of the experiences from her most recent book, *Putin Country: A Journey into the Real Russia* and her unique perspective on reporting and international conflicts.

Garrels had an early interest in Russia, which led to her journalism career. Before joining NPR in 1986 she was ABC's chief correspondent in Moscow and Central America. She went on to set up NPR's bureau in Moscow – the first fully-functioning overseas bureau for the young radio network. She arrived in Baghdad six months before the 2003 U.S. invasion, stayed during the U.S. bombing campaign and continued to cover Iraq for the next six years.

Continued inside under KPBX Programming Grid

## Fall Folk Festival Live Broadcast Celebrates Dan Maher

Back in 1982, a young broadcasting student and musician answered KPBX's call for volunteer folk music hosts. Dan Maher is still host of *Inland Folk* 35 years later, but he says the anniversary is just another number.

"Thirty-five years is great, but I intend to keep going," Maher told Tara Roberts of *Inland* 360.

KPBX celebrates Maher's milestone with a special segment during the annual Fall Folk Festival live broadcast, 11 a.m.-1 p.m. on Nov. 11. Music Director Verne Windham and former *Nacho Celtic Hour* host Carlos Alden co-host, and Dan will perform some of his favorite songs.

"Dan is that rare music producer who can bring a genre of music into a larger context and humanize it," Verne says. "He understands the essence of all music, including what we call 'folk.' He proves its importance,

Continued inside under KSFC Programming Grid

# Coming up with Spokane Public Radio



## **SPR Presents: BeauSoleil**

***Thursday, Oct. 5, 7:30 p.m. Martin Woldson Theater at the Fox, 1001 W. Sprague Ave.***

Michael Doucet's Grammy Award-winning Cajun band entertains with a unique blend of zydeco, western swing, calypso, blues, and traditional New Orleans jazz. Tickets available at TicketsWest. Proceeds benefit SPR.



## **KPBX Kids' Concert: SPARC Oktoberfest**

***Saturday, Oct. 7, 1 p.m. – FREE at River Park Square, 808 W. Main Ave. in Downtown Spokane***

Celebrate Oktoberfest with traditional German brass music and a few German dances from the Silver Spurs Youth Folk Dancers.



## **SPR Fall Drive**

***October 19-25 on KPBX 91.1, KSFC 91.9 & KPBZ 90.3***

Renew your support, upgrade to Sustaining Membership, give an extra gift, or become a member! Record a Testimonial to air during the drive at (509) 232-6904.



## **KPBX Broadcasts Live from the Fall Folk Festival**

***Saturday, Nov. 11, 11 a.m. - 1 p.m. – FREE at SCC Lair Auditorium, Mission at Greene.***

Verne Windham and Carlos Alden host a sampling of musical artists, and celebrate 35 years of Dan Maher's *Inland Folk*. Be part of the audience in the Lair Auditorium as the event is broadcast live on KPBX.



## **SPR Presents Anne Garrels**

***Wednesday, Nov. 15, 7:30 p.m. at the Bing Crosby Theater, 901 W. Sprague Ave. in Downtown Spokane***

The former NPR Senior Foreign Correspondent and author (*Putin Country: A Journey into the Real Russia* and *Naked in Baghdad*) takes the stage with SPR's Doug Nadvornick and Steve Jackson for a discussion about foreign reporting. Tickets available now at TicketsWest.com.



## **KPBX Kids' Concert: Hot Club of Spokane**

***Saturday, Nov. 18, 1 p.m. – FREE at SFCC Music Auditorium, 2410 W. Fort George Wright Dr.***

Explore the history and iconic performers of the Jazz Age at this edu-taining free concert for all ages.



## **Open House & On-Air Call-In**

***Wednesday, Dec. 6 at 1229 N. Monroe Street, Spokane 4-6 p.m.: Open House 6-7 p.m.: Live Call In***

What do you think of programming on KPBX, KSFC, and KPBZ? Tell us in person or during a live call-in program (call 1-800-328-5729). Come to the station and see where staff and volunteers make radio.

**More Event Information Online at [SpokanePublicRadio.org](http://SpokanePublicRadio.org)**

# KPBX Program Grid / October-December 2017

	Mon	Tues	Wed	Thurs	Fri	Sat	Sun
Mid						Brazilian Hour	Live Wire
1a	BBC World Service					BBC World Service	
2a							
3a							
4a							
5a							
6a	NPR's Morning Edition					NPR's Weekend Edition  Sunday Morning Essay 9:34a  Weekend Arts Calendar 6:18a, 7:18a, 8:18a, 9:18a, 11:55a	
7a	Local News 6:44a, 7:04a, 7:44a, 8:04a, 8:44a						
8a	Weekday Arts Calendar 6:20a, 7:20a, 8:20a, 2p, 6:29p						
9a							
10a	Morning Classical with Verne Windham					Classical Music Jan Munstedt	Classical Music Leonard Oakland
11a	New Releases	Piano Bench	Footlight Parade	Guitar Hour			
12p	Living on Earth	Public Forums	Zorba Paster	Inland Jrnl Cambridge	This American Life	On Point	Radiolab
1p	Fresh Air with Terry Gross				Jazz for a Friday Afternoon Brian Flick	Fascinatin' Rhythm	Front Porch Bluegrass
2p	Performance Today					Wait Wait, Don't Tell Me	Nacho Celtic Hour
3p						A Prairie Home Companion	Inland Folk
4p	Marketplace						Selected Shorts
5p	NPR's All Things Considered Local News at 4:44p, 5:04p, 5:44p, 6:04p					NPR's All Things Considered	
6p						Ask Me Another	A Prairie Home Companion
7p	The Bookshelf				Movies 101	Saturday Café  Michael Patoray	Inland Folk with Dan Maher
8p	Concert of the Week	L.A. Theatre Works	Harmonia	Santa Fe Chamber	Swingin' Down the Lane		
9p	This American Life	The Score	Shanghai Symph.	Chicago Symphony Orchestra	Friday Night Jazz	Johnson's Improbable History of Pop	
10p							
11p			Night Lights Jazz Review	Jazz Now		Beale St. Caravan	Hearts of Space



**Eckart Preu** conducts the Spokane Symphony Orchestra; Classics Concerts are repeated 10 days later on *Concert of the Week*, Monday nights at 7 p.m. on KPBX.



**Caridwen Irvine-Spatz** mixes Celtic and Kid music as the new host of *The Nacho Celtic Hour* Sundays at 2 p.m. on KPBX.

## Anne Garrels Continued from front panel

Over a span of 20 years, Garrels followed residents of Chelyabinsk, a military-industrial center in Russia’s eastern half. She compares the region’s industrial sections to Detroit and the nuclear military zones to Hanford.

Her first book, *Naked in Baghdad*, was a much more personal telling of her experience as one of the last Western journalists in that city during the Iraq War. Books will be available in the lobby during the event, courtesy of Auntie’s Bookstore. Garrels will autograph books after she chats on stage with SPR Program Director Doug Nadvornick, taking questions from the audience.

Tickets for the evening event are now on sale at TicketsWest.com, TicketsWest outlets, and 1-800-325-SEAT. Student tickets are available. Proceeds benefit Spokane Public Radio.

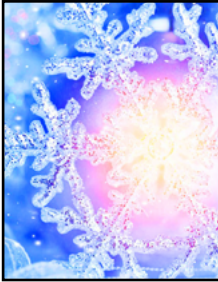
Thanks to Event Donors: **Dodson’s Jewelers, The Journal of Business, WSU Foley Institute, and Sam Rodell, Architects.**

KSFC Program Grid / October-December 2017

	Mon	Tues	Wed	Thurs	Fri	Sat	Sun					
Mid	World Radio Network					World Radio Network						
1a												
2a												
3a												
4a												
5a	BBC World Service					Weekend Edition Saturday	Weekend Edition Sunday					
6a	NPR's Morning Edition Local News 6:06a, 7:06a											
7a						Living on Earth	World Affairs					
8a						On Point					Travel w/ Rick Steves	TED Radio Hour
9a	Native America Calling										Ask Me Another	Interfaith Voices
10a						The Takeaway					NPR's Weekend Edition	
11a	BBC Newshour										Wait, Wait Don't Tell Me	You Bet Your Garden
12p											On the Media	Zorba Paster
1p	NPR's All Things Considered										Movies 101 Treatment	People's Pharmacy
2p						BBC World Service					Reveal	Innovation Hub
3p											On Point (Repeat of 9a hour)	
4p	BBC World Service   Inland Jrnl.   BBC					NPR's All Things Considered						
5p						Marketplace					BBC World Service	
6p	NPR's All Things Considered										Director's Choice	Men Charge The Write ?
7p						Fresh Air with Terry Gross					Fresh Air Weekend	City Arts & Lectures
8p	As It Happens										Live Wire	A Way w/ Words
9p						On the Media	Common-wealth Club	Philosophy Talk	With Good Reason	Alternative Radio	Snap Judgment	Selected Shorts
10p	On Point (Repeat of 8a hour)				Science Friday	Big Picture Science	Wait, Wait Don't Tell Me					
11p	BBC World Service					Tech Nation	Le Show					



**Election 2017** will see several races for state legislators, city council members, judges and school board members. SPR covers them all during *Inland Journal* Thursdays at Noon on KPBX, 5 p.m. on KSFC.



**Holiday Specials** will air around Hanukkah (Dec. 12-20), Christmas (Dec. 25) and the New Year (Jan. 1). Listings will be online at [SpokanePublicRadio.org/holiday](http://SpokanePublicRadio.org/holiday).

Dan Maher Continued from front panel

relevance, and its meaning in his lovely conversational way. He’s absolutely central to our folk offerings.”

From KPBX’s beginning as a public radio station, folk music came on Sundays at 6 p.m. after NPR’s *All Things Considered*. By fall ‘83 Maher was the sole host of *Inland Folk*, recording each episode at Washington State University in Pullman and sending reel-to-reel tapes on a bus up U.S. Route 195. When he went from student to staff at WSU, their radio station began airing the show too.

*Inland Folk* grew from one hour to two, then expanded to three hours in the early 2000s. By then he was his own producer, engineer and editor, and *Inland Folk* was a staple for listeners across the Northwest.

Maher will also be live in the KPBX studio during the Pledge Drive Folk Special on Oct. 22 from 1-4 p.m. The first hour of *Inland Folk* airs Sundays at 3 p.m, with two more hours later that evening from 8-10 p.m.

## Spokane Public Radio Membership and Donation Form

Annual or additional contributions to Spokane Public Radio are always welcome.

Mail to: Spokane Public Radio, 1229 N. Monroe St., Spokane, WA 99201

**THANK YOU FOR YOUR SUPPORT**

Name(s) \_\_\_\_\_

Address \_\_\_\_\_

Day Phone (       ) \_\_\_\_\_ Evening Phone (       ) \_\_\_\_\_

E-Mail \_\_\_\_\_

### Type of Gift/Pledge

☐ New membership    ☐ Extra Gift    ☐ Renewing Member    ☐ Payment on Existing Pledge

Donation Amount \$ \_\_\_\_\_

### Payment Option

☐ **Sustaining Membership - ongoing monthly gift with automatic membership renewal**

☐ Credit/Debit card (see below)    ☐ Auto Bill Pay from my bank

☐ Full payment enclosed    ☐ First payment of \$ \_\_\_\_\_ enclosed

☐ Monthly: \_\_\_\_\_ months for \$ \_\_\_\_\_ per month

☐ EFT - for Sustaining monthly

**Pledge securely on-line:  
[spokanepublicradio.org](http://spokanepublicradio.org)**

### Charge Information

☐ Visa    ☐ Mastercard    ☐ Discover    ☐ AMEX

Card # \_\_\_\_\_ Exp. \_\_\_\_\_ / \_\_\_\_\_

Name on Card \_\_\_\_\_

☐ No Guide Newsletter    ☐ Email link to The Guide    ☐ Send me The Guide via U.S. Mail

## Testimonial Hotline Wants Your Stories

SPR listeners and supporters frequently tell us what they love or need from KPBX, KSFC, and KPBZ. We want to hear more!

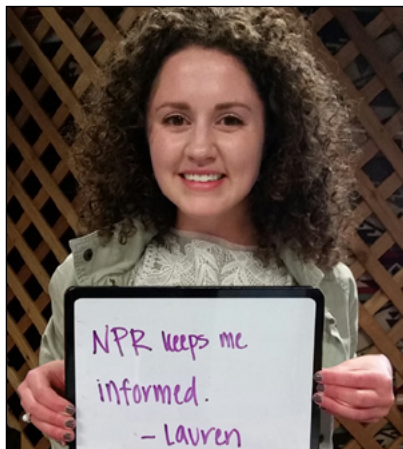
You can now record your thoughts through the new Testimonial Hotline. Call anytime to (509) 232-6904 and record your thoughts or stories about listening to the stations of SPR.

We will share these recordings on air during the Fall Pledge Drive, held Oct. 19-25.

Maybe you have a memory about a particular program, a special driveway moment, or a laugh from an SPR event. Tell us your story, then listen for your voice on the radio!

Thanks for telling us what you enjoy about the stations. It helps us celebrate this great public radio service together.

**Call (509) 232-6904 and record your thoughts or stories about Spokane Public Radio. We'll put your stories on air Oct. 19-25.**





## Spokane Public Radio

1229 North Monroe Street  
Spokane, WA 99201

### **KPBX 91.1 FM / Spokane, WA** **News, Music and Ideas**

Bonner's Ferry, ID / KIBX 92.1  
Brewster, WA / KPBW 91.9  
Enterprise, OR / 89.3  
Grand Coulee, WA / 91.9  
Kellogg, ID / KLGG 89.3  
Omak, WA / KOMQ 88.5  
Oroville, WA / KPBG 90.9  
Sandpoint, ID / 101.7  
South Hill, Spokane, WA / 90.7  
Thompson Falls, MT / 103.9  
Twisp/Winthrop, WA / KTWB 91.1

### **KSFC 91.9 FM / Spokane, WA** **News, Conversation and Ideas**

Coeur d'Alene, ID / 100.3  
Omak, WA / 88.9  
St. Maries, ID / KXJO 92.1

S P O K A N E

**PUBLIC RADIO**

**KPBX 91.1 - KSFC 91.9 - KPBZ 90.3**

**Part of the NPR network**

### **KPBZ 90.3 FM / Spokane, WA** **Remix Radio**

Stream at:  
[kpbx.org](http://kpbx.org) / [ksfc.org](http://ksfc.org) / [kpbz.org](http://kpbz.org)

Printing by Hearn Brothers Printing  
Mailing by Walt's Mailing Service & Presort