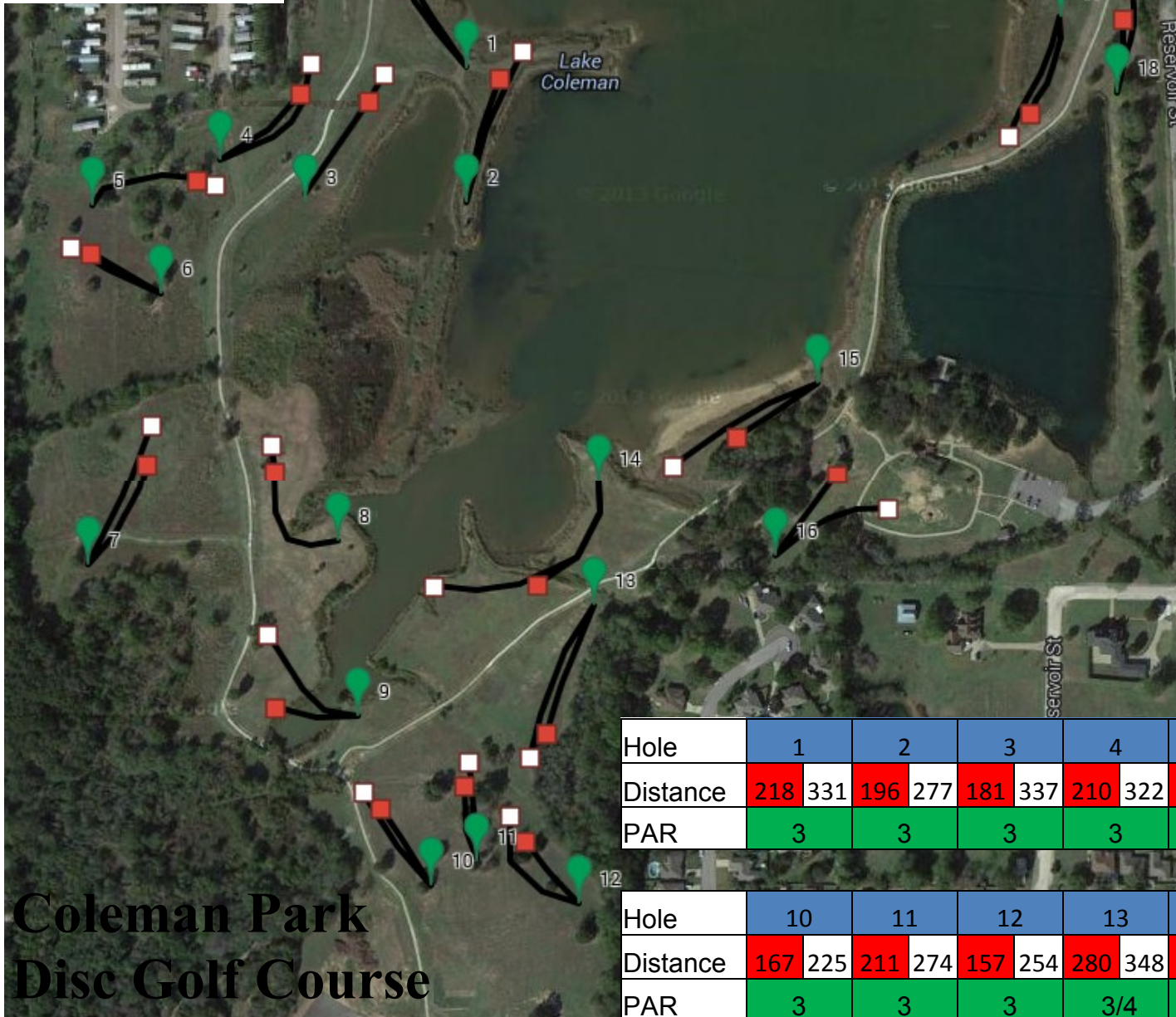




State Loop 313



~ Course Etiquette ~

For some players, disc golf is still a relatively unstructured activity, which can sometimes lend to it's appeal. Even so, for the greater good of the game, there are some general guidelines for playing disc golf which should be kept in mind. Disc golf is a privilege, and we need to play nice with all the other park users. Here is a brief list of things to think about which will help you, and everyone else, enjoy the course/park together:

- Do not throw your golf disc if it could even possibly hit someone. No one likes to get hit by a disc, so the people in your group (and the group behind you) should understand if you wait.
- If there is someone in the way, point out that there is a disc golf course, and ASK if they would move aside. They usually do, and most don't even know about the course. Don't act like you own the park.
- If there is a group activity on the course nearby your fairway (soccer team, picnic), consider just skipping that hole.
- If you throw your disc and it looks like it may come close to someone, immediately yell "FORE!". You could be held responsible if someone is injured. (It really happens)
- If you notice a group playing faster than yours, offer to let them play through. This helps the entire course flow more smoothly.
- If you come to a spot where two holes cross, the group further along (higher numbered hole) should go first. This helps avoid groups getting bottlenecked, and once again helps the entire course flow freely.
- Be sure to observe all park rules:
 - Please, do not litter! There are many garbage cans available, just carry it till you come across one.
 - Alcohol is against park policy, and once again, you may be fined if caught
- When you find a disc:
 - Look around before picking it up... the owner probably just threw it there!
 - If not, check to see if there is a number on it, then call the person. It could be their favorite disc.
 - If there is no name, congratulations, you have a new disc!
- When you lose a disc:
 - Look for a few minutes, but then offer to let the group behind you through.
 - When retrieving discs from trees/water/etc., never rip limbs off trees or bushes!!! (That goes for street signs too, buddy!) Your disc is far less important than the course obstacles and park features. Don't ruin the course for everyone else. This is, of course, against park rules as well, and makes us look really bad.
 - If you lose a disc, and someone is kind enough to call you, offer a reward of some kind! They could have just kept it you know...
- Most of all, have fun!

| Hole | 1 | 2 | 3 | 4 | 5 | 6 | 7 | 8 | 9 |
|----------|---------|---------|---------|---------|---------|---------|---------|---------|---------|
| Distance | 218 331 | 196 277 | 181 337 | 210 322 | 240 287 | 158 218 | 211 319 | 232 397 | 152 300 |
| PAR | 3 | 3 | 3 | 3 | 3/4 | 3 | 3 | 3 | 3 |

| Hole | 10 | 11 | 12 | 13 | 14 | 15 | 16 | 17 | 18 |
|----------|---------|---------|---------|---------|---------|---------|---------|---------|---------|
| Distance | 167 225 | 211 274 | 157 254 | 280 348 | 280 525 | 194 333 | 230 300 | 249 331 | 169 250 |
| PAR | 3 | 3 | 3 | 3/4 | 4 | 3 | 3 | 3 | 3 |

Coleman Park Disc Golf Course