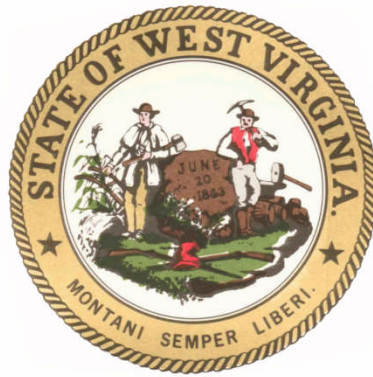


**State of West Virginia
Source Water Assessment and
Protection Program
Source Water Assessment Report**

**Morgantown Utility Board
Monongalia County
PWSID: WV3303111**



Prepared by:

**West Virginia Department of Health and Human Resources
Bureau for Public Health
Office of Environmental Health Services
Source Water Protection Unit**

Date: April 2003

**Surface Water Public Water Supply Systems
Source Water Assessment and Protection Program (SWAPP)
Susceptibility Report**

Prepared by the
West Virginia Bureau for
Public Health, Source
Water Assessment and
Protection Unit

Date Prepared: Wednesday,
April 30, 2003

What is the Purpose of a Susceptibility Report?

A susceptibility report identifies the most significant potential contaminant sources that could threaten the quality of your public water supply. Your susceptibility ranking does not imply poor water quality. Regular water tests best reflect actual water quality. This report will be used by public water supply systems with a surface water source. In addition, this report will enhance West Virginia's existing watershed approach to water quality improvement and protection. Table 1 provides you information on your public water supply.

What is SWAPP?

The SWAPP, established under the Safe Drinking Water Act, requires every state to:

- Delineate the area from which a public water supply system receives its water;
- Inventory land uses within the recharge areas of all public water supplies;
- Assess the susceptibility of drinking water sources to contamination from these land uses; and
- Publicize the results to provide support for improved protection of sources.

Table 1: Public Water Supply (PWS) Information

PWS Name	Morgantown Utility Board
PWS Address	Box 852 278 Green bay Rd. Morgantown, WV 26504
PWS ID Number	WV3303111
County	Monongalia
System Type	Community

The West Virginia Bureau for Public Health (WV BPH) is undertaking this task. The rankings of susceptibility of your intake (s) to potential contamination are listed in Table 2.

Table 2: Intake Information

Facility Name	Source Name	Design Meets Regulations	Susceptibility Ranking
Morgantown Utility Board	Monongahela River	Yes	High

The WV BPH Central Office assessed the source for Morgantown Utility Board. Potesta & Associates, Inc. (POTESTA) performed the file review and field survey used to conduct the assessment.

What is my Source Water Protection Area (SWPA)?

Unlike ground water aquifers, which have a natural protective layer above them, all surface waters are susceptible to contamination because they are exposed at the surface and lack a protective barrier from contamination. Accidental spills, releases, sudden precipitation events that result in overland runoff, or

storm sewer discharges can allow pollutants to readily enter the source water and potentially contaminate the drinking water at the intake. Because of this, the SWPA consists of two types of delineations.

- **Watershed Delineation Area**

The first type of delineation is the Watershed Delineation Area (WSDA). Figure 1 shows the extent of the WSDA, which covers approximately 2,575 square miles in the Monongahela River Watershed. The WSDA includes the entire watershed area upstream of the intake up to the boundary of the West Virginia state border, or a topographic boundary. The perimeter of the catchment area provides the water to the water supply intake.

- **Zone of Critical Concern**

The second type of delineation is the Zone of Critical Concern (ZCC). Figure 2 shows the ZCC area, which covers approximately 6,070 acres. The ZCC is a corridor along streams within the WSDA that warrants a more detailed inventory and management due to its proximity to the surface intake and to the susceptibility to potential contaminants. The ZCC is calculated using a mathematical model that accounts for stream flows, gradient, and area topography. The length of the ZCC is based on a five-hour time of travel. The ZCC width is 1,000 feet from each bank of the principal stream and 500 feet from each bank of the tributaries draining into the principal stream.

What is Susceptibility?

Susceptibility is a measure of your intake's potential for contamination from land uses and activities within the SWPA at concentrations that pose a concern. The purpose of the susceptibility analysis is to provide a pointer to what action a public water system should take to further define and reduce susceptibility. This may include recommendations for a more detailed inventory and assessment, monitoring work, or an indication of the type and intensity of source water and other protection activities needed.

The possibility of a release from potential contaminant sources is greatly reduced if best management practices (BMPs) are used. However, the susceptibility determination for your intake did not take into account whether BMPs are being used.

Susceptibility of a drinking water intake does not mean a customer will drink contaminated water. Water Suppliers protect drinking water by monitoring and treating water supplies, and using BMPs and source water protection measures to ensure that safe water is delivered to the tap.

How Was The Water Supply Susceptibility Determined?

Your intake (s) susceptibility is based on the following:

Resource Characterization

The purpose for conducting the Resource Characterization analysis of the delineated SWPA is to obtain an understanding of its physical, biological, chemical, and hydrological characteristics. Four resource characteristics were evaluated:

- The potential for surface runoff to occur;
- The ease that surface runoff transport material can be delivered into the stream;
- The movement through the SWAP area; and
- The biological and chemical health of the surface water resource in the SWAP area.

- **Potential for Surface Runoff to Occur**

The soil types present in the watershed area and the associated soil properties have a direct influence on the potential for surface runoff to occur. As infiltration rate of soil increases, (more precipitation soaking in rather than running off) the contaminant load associated with the reduced runoff should decrease. Table 3 provides a summary of the associated soil groups.

Table 3: Summary of Soil Associations in the WSDA

Soil Associations	Soil Drainage	Topographic Setting
Clarksburg Silt Loam	Moderately Drained	8-15 percent slopes
Zoar Silt Loam	Moderately Drained	8-15 percent slopes
Culleoka-Westmoreland Silt Loam	Well Drained	35-65 percent slopes
Urban Land-Monongahela		3-15 percent slopes
Dekalb very stony loam	Well Drained	35-65 percent slopes
Monongahela Silt Loam	Moderately Drained	8-15 percent slopes
Dekalb very stony loam	Well Drained	15-35 percent slopes
Lobdell-Holly Silt Loam	Poorly Drained	
Chagrin Silt Loam	Well Drained	
Monongahela Silt Loam	Moderately Drained	3-8 percent slopes
Gilpin-Culleoka-Upshur	Well Drained	15-25 percent slopes
Culleoka-Westmoreland Silt Loam	Well Drained	25-35 percent slopes
Urban Land-Allegheny	Well Drained	3-15 percent slopes
Pope variant sandy loam	Well Drained	
Culleoka-Westmoreland Silt Loam	Well Drained	
Westmoreland Silt Loam	Well Drained	15-25 percent slopes
Kanawha Loam	Well Drained	
Allegheny Silt Loam	Well Drained	3-8 percent slopes
Allegheny Silt Loam	Well Drained	8-15 percent slopes
Gilpin-Culleoka-Upshur Silt Loam	Well Drained	35-65 percent slopes
Clarksburg Silt Loam	Moderately Drained	15-25 percent slopes
Lobdell Silt Loam	Moderately Drained	

- **Ease of movement of material into the Stream System (Rate of Overland Material Transport):**

The size, shape, and slope of the SWAP area have a direct influence on material transported by surface runoff. In general, the longer the overland travel distance and travel time that surface runoff has taken in order to reach a stream channel, the greater the chance it has to deposit and filter the contaminants that may occur. Table 4 provides an analysis of the size, shape, and slope.

Table 4: Hydrologic Setting

Size of WSDA (mi ²)	2,575
Shape of WSDA	Large & Irregular
Stream Length (Main Stem) (mi)	26
Average Watershed Slope	10 to 30 %

- **Movement of Water through the Watershed Area**

A number of physical and natural factors can influence the movement of water through the SWAP area. The pattern and development of the drainage network of the SWAP area directly influence the rate of water movement. Evaluation of the hydrologic cycle will provide an indication of the amount of annual rainfall that is absorbed into the ground or becomes runoff. Table 5 summarizes the total mileage of streams contained in the WSDA, average stream gradients of the main stem, average rainfall, the nearest relevant USGS stream gauge, distance to gauge, topographic position of gauge, annual mean discharge, high flow, and low flow.

Table 5: Movement of Water

Number of Stream Miles	3609
Average Stream Gradient (Main Stem)	6 ft/mi
Average Rainfall (in)	42
Nearest Relevant USGS Stream Gauge	NA
Distance to Relevant USGS Stream Gauge (mi)	NA
USGS Stream Gauge Topographic Position	NA
Annual Mean Discharge (cfs)	NA
High Flow (cfs)	NA
Low Flow (cfs)	NA

- **Review of Water Quality Data**

In order to characterize the condition of the surface water within the watershed, the available chemical and biological water quality data was reviewed. This data was collected as part of the WV BPH and the West Virginia Department of Environmental Protection (WVDEP) implementation of the federal Safe Drinking Water Act and Clean Water Act. Water quality data was evaluated to help provide direct pointers to a source of contamination and to direct the focus for additional source evaluations. Additionally, immediate source water protection efforts will be identified by this review.

Available water quality data includes test results from treated drinking water, finished water, and

untreated source water (raw water) conducted by the water supplier; ambient water chemistry; biological criteria and monitoring (bacteria, macroinvertebrates and fish); and habitat evaluation. The sampling requirements for public water systems vary depending on the type of system and the federal regulated testing requirements. Therefore, a lack of water quality impacts may indicate the lack of a certain type of sampling rather than a lack of contamination.

For water quality and stream flow data, POTEESTA researched databases such as the United States Environmental Protection Agency Storage and Retrieval database (STORET), the United States Geological Survey National Water Quality Assessment Program and National Water Information System databases as well as the WVDEP 303(d) listing and West Virginia and United States Safe Drinking Water Information Systems (SDWIS). The WVDEP 305(b) listing has yet to be completed for the source stream watershed. In addition to these databases, POTEESTA copied portions of files from the WV BPH and requested that the Morgantown Utility Board send copies of all water testing completed for the previous five years.

Summary of Raw and Finished Water Quality Results from Public Water System

POTEESTA reviewed the water quality data for the Morgantown Utility Board, and observed secondary maximum contaminant level (MCL) exceedances for aluminum in the finished water (secondary MCLs are non-enforceable federal guidelines for aesthetic quality). POTEESTA obtained relevant (i.e., within the previous five years) raw water quality data for review. POTEESTA observed raw water exceedances for aluminum, iron, and manganese when using secondary MCLs for finished water as a comparison. For additional information on the finished water quality, please review the consumer confidence report for a yearly summary of the water quality.

Summary of Chemical and Biological Water Quality Results

The WVDEP 2002 303(d) list of water quality impaired streams lists the intake source, the Monongahela River, ID No. 539, as being impaired with respect to aluminum and fecal coliform for the entire length of the stream. The Monongahela River did appear on the 1998 WVDEP 303(d) list for the aluminum impairment, but not for the fecal coliform impairment. The WVDEP has yet to analyze the data from Watershed Groups D and E for the 305(b) report; however, the watershed was included in the most recent sampling endeavor and will be sampled every 5th year from that date. The EPA STORET system reported testing events from March 15, 1999 to September 16, 2002 for the Station ID M-000-097.9, and on October 5, 1999 for the Stations ID M-000-102.1 and M-000-104.0 for the Monongahela River; and on January 1, 1999 for the Station ID M-009-0001 for Cobun Creek. Testing included limited metals, fecal coliform, general field chemistry, visual assessment, carbon analysis, and nutrient content. Water flow data from a USGS sampling station is available for the Monongahela River, but is unavailable for the Cobun Creek Impoundment. The WVDEP website did have total maximum daily load reports for the source stream and the pollutant listed is aluminum. No fish consumption advisories are currently issued for the source stream. The SDWIS did not report relevant violations for MCL exceedances.

POTENTIAL SIGNIFICANT CONTAMINANT SOURCES (PSCSs):

Inventory of Potential Significant Contaminant Sources

The purpose of providing an inventory of certain types of land uses, PSCSs, and activities within the SWAP area is to aid in reducing the risk posed to the public drinking water supply. The following subsections provide information regarding the methodology used to generate the inventories.

The inventory portion of the SWAP consists of two steps:

- The first step is the broad inventory based primarily on regulated and existing databases. The inventory consists of a general land use analysis, the identification of regulated activities in the delineated WSDAs, and an analysis of road and rail crossings adjacent to the streams in the WSDA.
- The second step is the detailed inventory of PSCSs in the ZCC. The detailed source inventory is conducted to identify PSCSs that were not captured in the broad regulated source inventory and to field verify the PSCSs in the ZCC. PSCSs located during the inventory are found on Figure 2.

A detailed risk-assessment of the PSCSs was beyond the scope of this survey because of minimal data and resources. Local decision makers should do the detailed risk analysis because they are better suited to make the bridge from assessment work to protective strategies. The West Virginia SWAP program can provide guidance to the decision makers and help in prioritizing the PSCSs.

- **Existing (primarily regulated) Database Review**

Table 6: Summary of existing (primarily regulated) PSCSs

	NUMBER	PERCENT
WSDA	26,440	100
ZCC	47	0.18

Table 6 is a summary of existing PSCSs based on public information obtained from various federal, state, and local agencies that maintain environmental regulatory databases. These databases provide information about the regulatory status of a property and incidents involving use, storage, spilling or transportation of oil, and hazardous materials. (Please note: the large number of PSCSs in the WSDA is due to numerous oil and gas wells in the area.)

- **Summary of the Detailed Inventory**

Table 7: Summary of PSCSs within the ZCC

Potential Contaminant Source	TOTAL PSCSs	PERCENT
AGRICULTURE	1	1.8
RESIDENTIAL	2	3.6
MUNICIPAL	6	10.9
COMMERCIAL	12	21.8
INDUSTRIAL	34	61.8

Table 7 is a summary of the detailed inventory of regulated and unregulated PSCSs in the ZCC. The detailed source inventory was conducted to identify PSCSs that were not identified in the existing database review and to verify the location of the PSCSs within the ZCC. Additional PSCSs that were identified in detailed inventories of the ZCC consist of agricultural activities (pasture land), commercial activities (gas stations, junkyards, marina/boat docks, and a utility substation transformer), municipal operations (public pool, schools, sewage treatment plant, and subdivision), and industrial operations (coal mines, machine shop, concrete plant, and manufacturing). Of these PSCSs, some of the industrial sources may have large volumes of potential contaminant stored.

- **Transportation Network**

A summary of the transportation network is shown in Table 8. This information can be used to aid in planning for transportation related accidents that could result in contamination of the source water in the delineated WSDA. Table 9 is a summary of the transportation network stream crossings in the WSDA. Please note that miles of train tracks could be less due to decommissioning of tracks.

Table 8: Transportation Network Summary for WSDA

	Within 100 feet of stream	Total
Miles of Interstate	0	72
Miles of Primary	0	524
Miles of Secondary	0	62
Miles of Train Tracks	0.1	562

Table 9: Transportation Network Stream Crossings in the WSDA

	Train Tracks	Interstate	Primary Roads	Secondary Roads
Number of Stream Crossings	3	1	0	0

- **General Land Use**

The general land use analysis will provide an indication of which land uses predominate throughout the SWAP area, near the intake, or adjacent to the rivers, streams, lakes, and reservoirs. The land use in the SWAP area is shown in Table 10.

Table 10: General Land Use

LAND USE	WSDA (Acres)	WSDA % of Total	ZCC Area (Acres)	ZCC % of Total
Agriculture	390,772	23.70	741	12.20
Barren	13,191	0.80	61	1.00
Power lines	5,771	0.35	30	0.50
Roads	1,649	0.10	36	0.60
Shrub land	29,679	1.80	188	3.10
Urban	46,167	2.80	407	6.70
Water	21,435	1.30	1,038	17.10
Wetland	3,298	0.20	6	0.10
Woodland	1,137,691	69.00	3,575	58.90

SWAPP Area Assessment and Protection Activities

Analysis of the Resource Characterization and potential significant contaminant sources of the SWAP area for the Morgantown Utility Board indicates that the water supply is susceptible to possible future contamination based on the following:

- ✓ The large irregular shape, steep topographic setting, and large size of the WSDA present an increased potential for contamination. The health of the Monongahela River may be impacted by a number of regulated and unregulated point and non-point sources in the ZCC and WSDA. Source water protection efforts should be directed toward the establishment of an effective and efficient emergency response plan if one does not currently exist.

Recommendations:

- ✓ Protection efforts should focus on the collection of additional information on the point and non-point sources present to evaluate the risk;
- ✓ Work with the Department of Health and Human Resources, other state agencies and local officials to make sure your intake is included in local regulations and inspections efforts;
- ✓ Restrict access to the intake area and post the area with Drinking Water Protection Area signs;
- ✓ Address any biological contaminant issues; and
- ✓ Protection options need to be actively considered to further evaluate and manage all potential contaminant sources and the Morgantown Utility Board should place a high priority on protecting its supply source.

NEXT STEP – SWAP Protection Plan

The next step in source water protection planning is to prepare a SWAP protection plan. The SWAP protection plan incorporates this source water delineation assessment report and three additional sections: Contingency Planning, Alternative Sources, and Management Planning.

Contingency Planning

A contingency plan documents the system's planned response to interruption of the source water supply.

Alternative Sources

Information pertaining to alternative water sources focusing on long-term source replacement should the system be required to develop a new source of water due to contamination (or other reasons). This section outlines the most likely sources that can be used as an alternate water source.

Management Planning

Management planning is the most important element of SWAP. The management plan identifies specific activities that will be pursued by the system to protect their water resources. The system will benefit by taking a proactive approach to source water protection in their watersheds. It is anticipated that most of the management effort will focus on coordination with government agencies and periodic surveys of the watersheds. It may be necessary to conduct a limited number of special studies to determine actual risk and consequences for selected contaminant sources. This information may be needed before decisions can be made on management activities.

Need additional information?

Additional information or sources of information can be obtained by calling or visiting the WV BPH web site at www.wvdhhr.org/bph/swap or phoning 304-558-2981.

Disclaimer - The coverages presented in this program are under constant revision as new sites or facilities are added. They may not contain all the potential or existing sites or facilities. The West Virginia Bureau for Public Health is not responsible for the use or interpretation of this information. Please report any inaccuracies on either the map or inventory by phoning 304-558-2981.

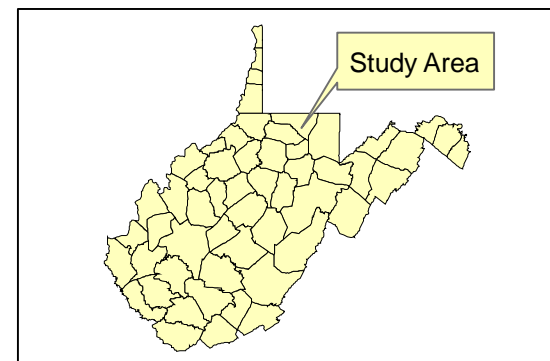
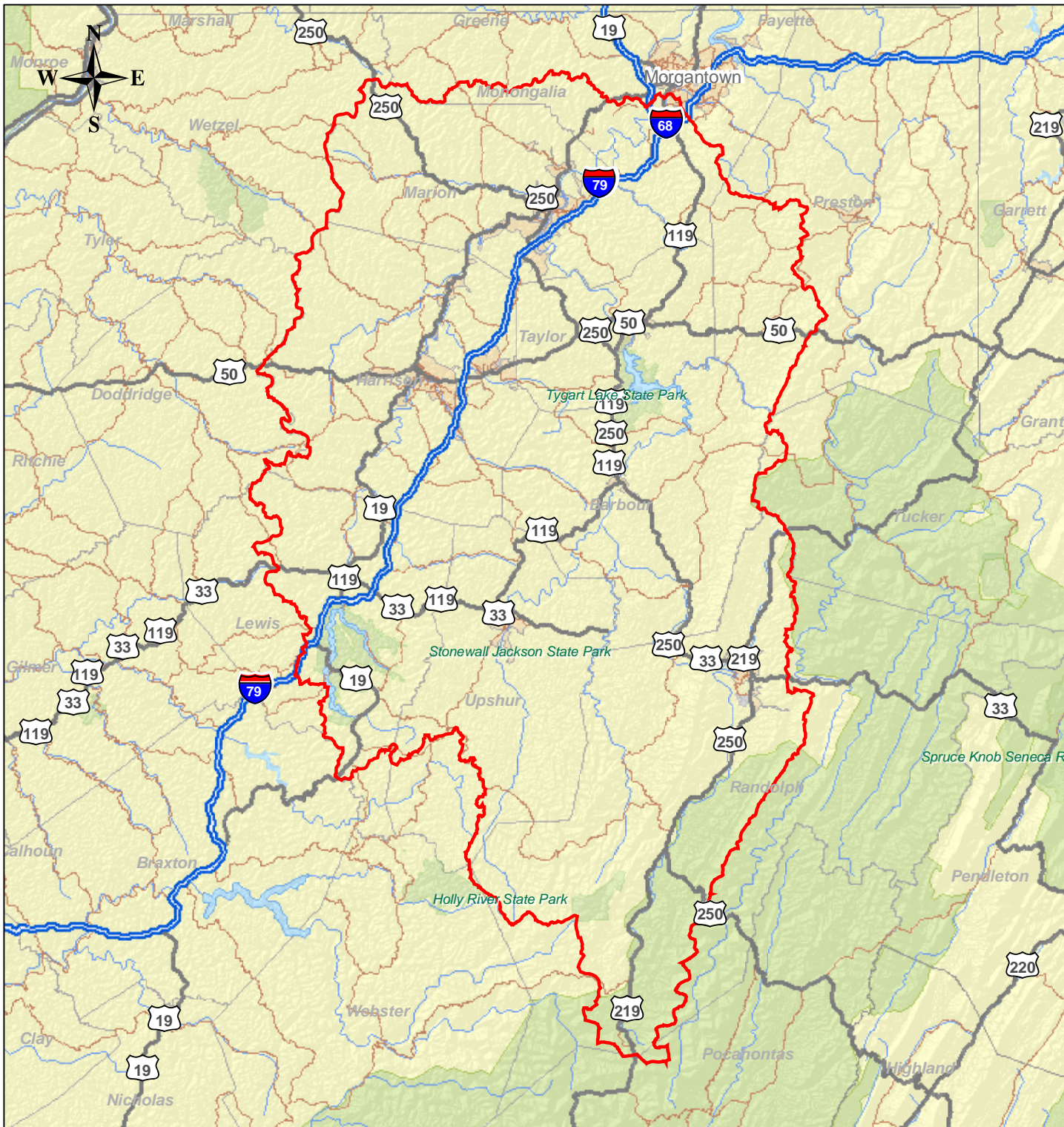
Glossary:

Best Management Practices (BMPs) are operational procedures used to prevent or reduce pollution.

Potential Significant Contaminant Source (PSCS) is a facility or activity that stores, uses, or produces chemicals or elements, and has the potential to release contaminants identified in the state program within a source water protection area in an amount, which could contribute significantly to the contaminants of the source waters of the public water supply.

Public Water System (PWS) is a system for the provision to the public of pipe water for human consumption, if such system has at least 15 service or regularly serves an average of at least 25 individuals daily at least 60 days of the year.

Water Quality Data is used to help assess both the potential pathogen contamination and other compliance monitoring (Nitrates) parameters associated with public water supplies.



Map Key

 Watershed Delineation Area

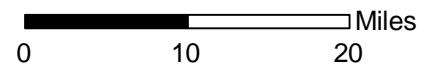


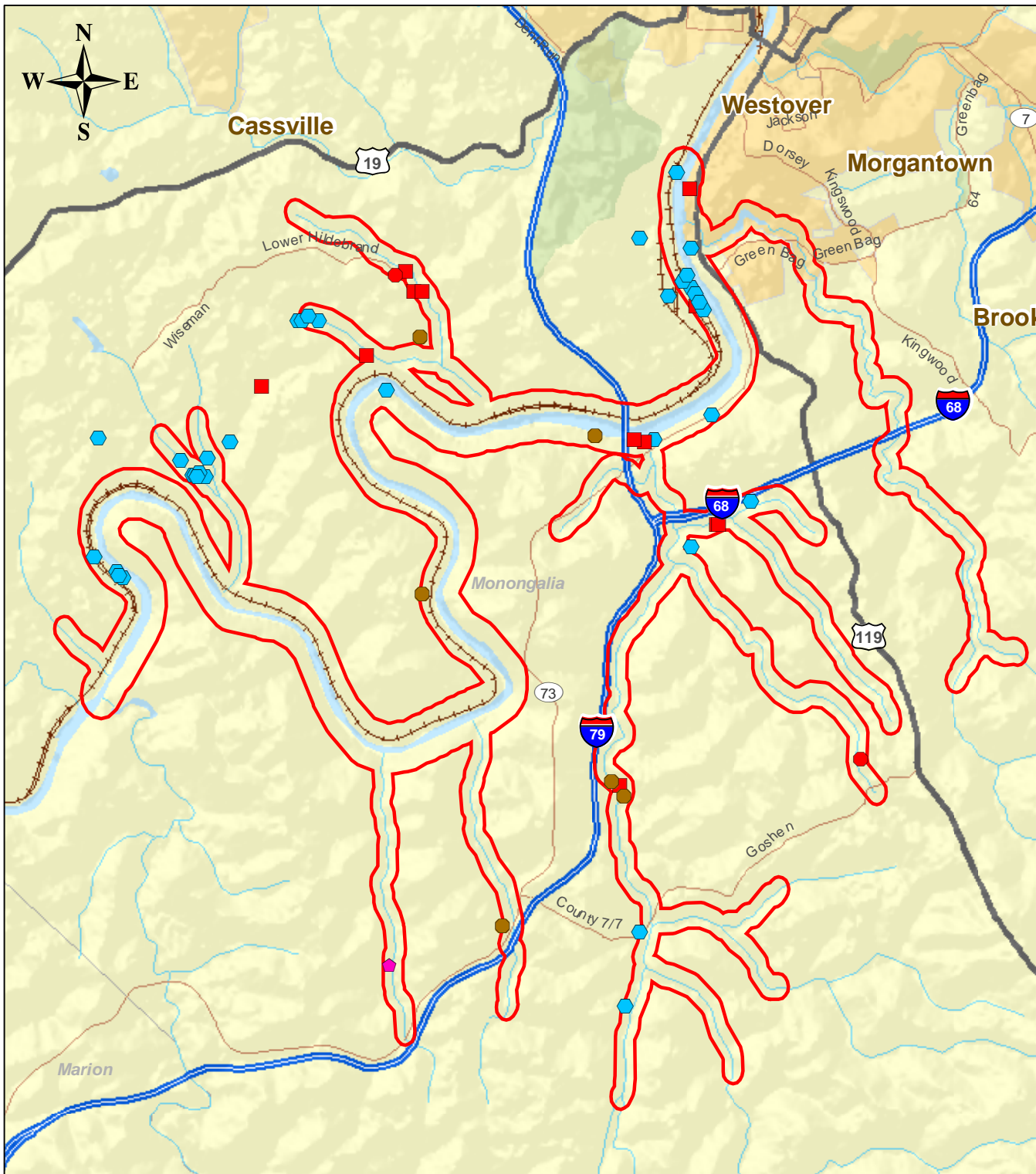
This map is provided as a public service by the West Virginia Bureau for Public Health. The Bureau makes NO representation regarding completeness or accuracy of the data hereon. Efforts are made to verify and update the data used to generate this map. However, with data sets of this size and nature, eliminating all errors is difficult. Thus, the user assumes total responsibility for verification.

Source locations not included for reasons of security.

**Morgantown Utility Board
Watershed Delineation Area
WV3303111
Monongalia County**

Scale: 1:750,000
Drawn By: JEM
05/11/06





Map Key

Potential Contaminant Sources

- ◆ Agriculture
- Commercial
- ⬡ Industrial
- Municipal
- Residential
- Source Water Protection Area



This map is provided as a public service by the West Virginia Bureau for Public Health. The Bureau makes NO representation regarding completeness or accuracy of the data hereon. Efforts are made to verify and update the data used to generate this map. However, with data sets of this size and nature, eliminating all errors is difficult. Thus, the user assumes total responsibility for verification.

Source locations not included for reasons of security.

Morgantown Utility Board WV3303111 Monongalia County

Scale: 1:70,000
Drawn By: JEM
05/11/06

