

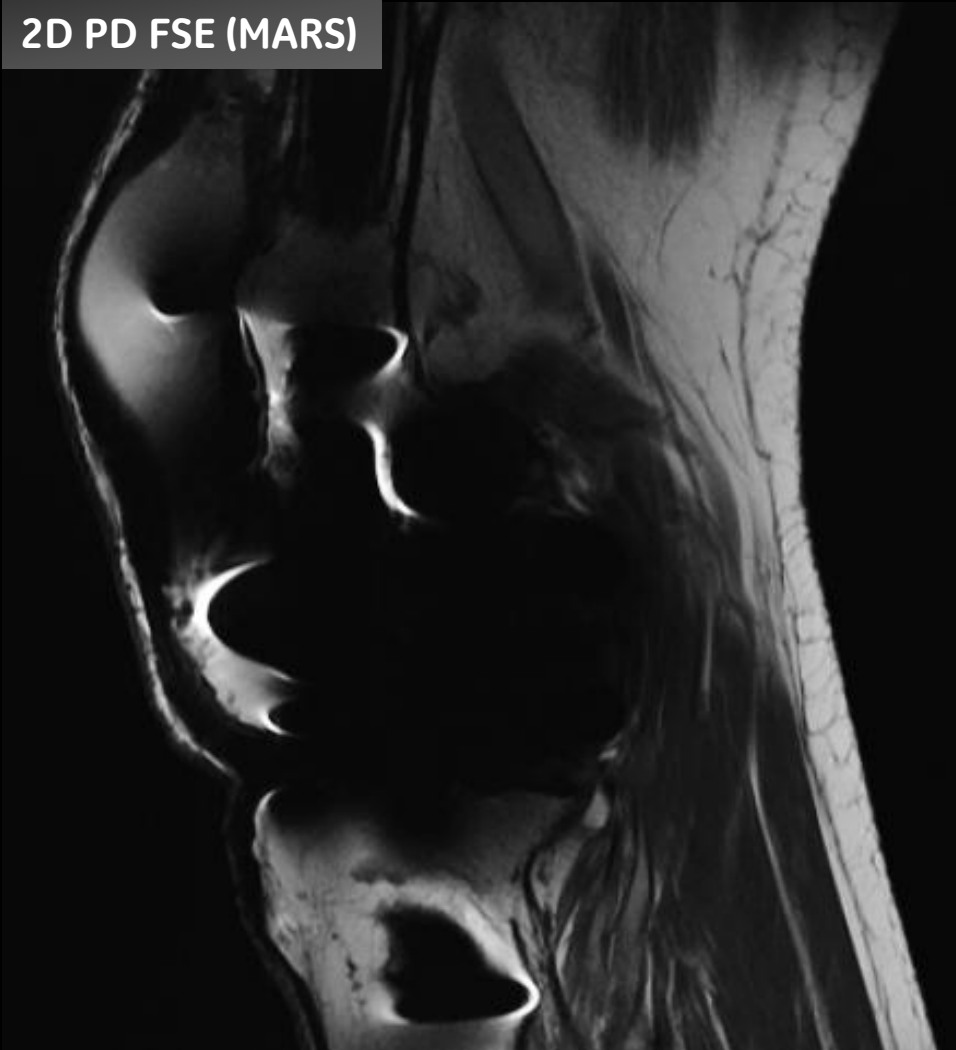
# MAVRIC SL - Disclaimers

These images were generated using the MAVRIC SL software feature and are representative of the quality of images that users should expect to generate. However, GE Healthcare is not always able to confirm whether the images are of MR Conditional implants or whether scanning was in accordance with the implant's instructions for use.

MAVRIC SL should only be used with MR Conditional implants and within the MR conditions specified for those implants.

# MAVRIC SL in the Knee

2D PD FSE (MARS)



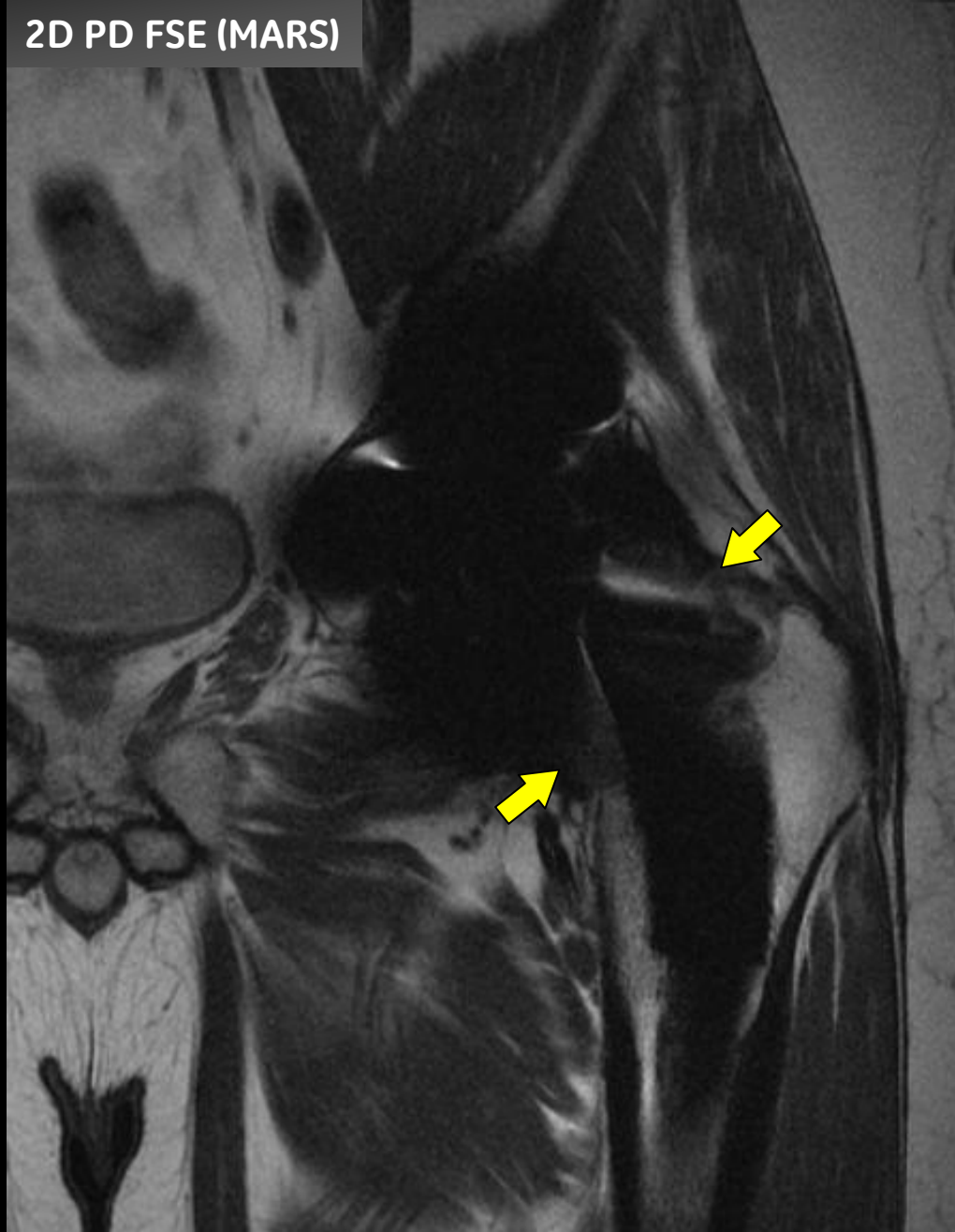
MAVRIC SL



Note visualization of bone interface around the femur (red arrow), and posterior tibial osteolysis (blue arrow) on the MAVRIC SL image (right). MAVRIC demonstrates clear outline of polyethylene (red arrows) and posterior tibial osteolysis (blue arrow)

# Adverse Local Tissue Reaction

2D PD FSE (MARS)



MAVRIC SL



## Metal-on-Metal Hip Implant:

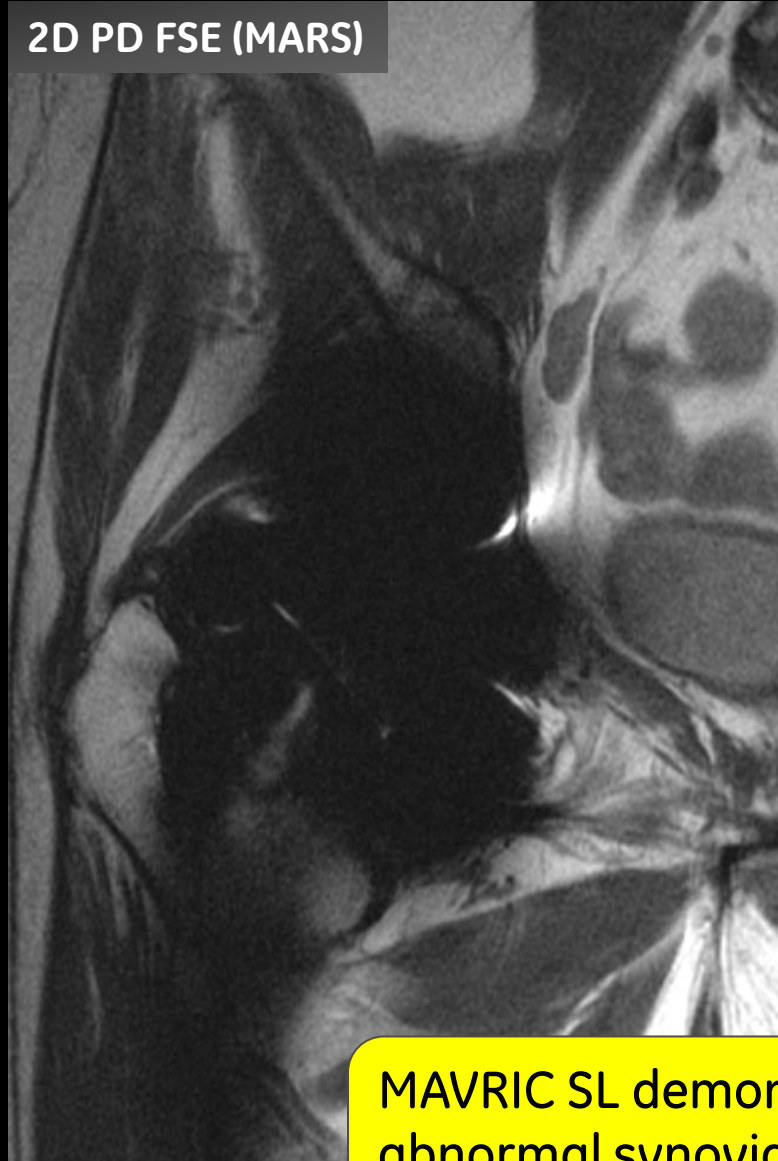
MAVRIC SL demonstrates ALTR with markedly thickened synovial lining (arrow)

# Adverse Local Tissue Reaction

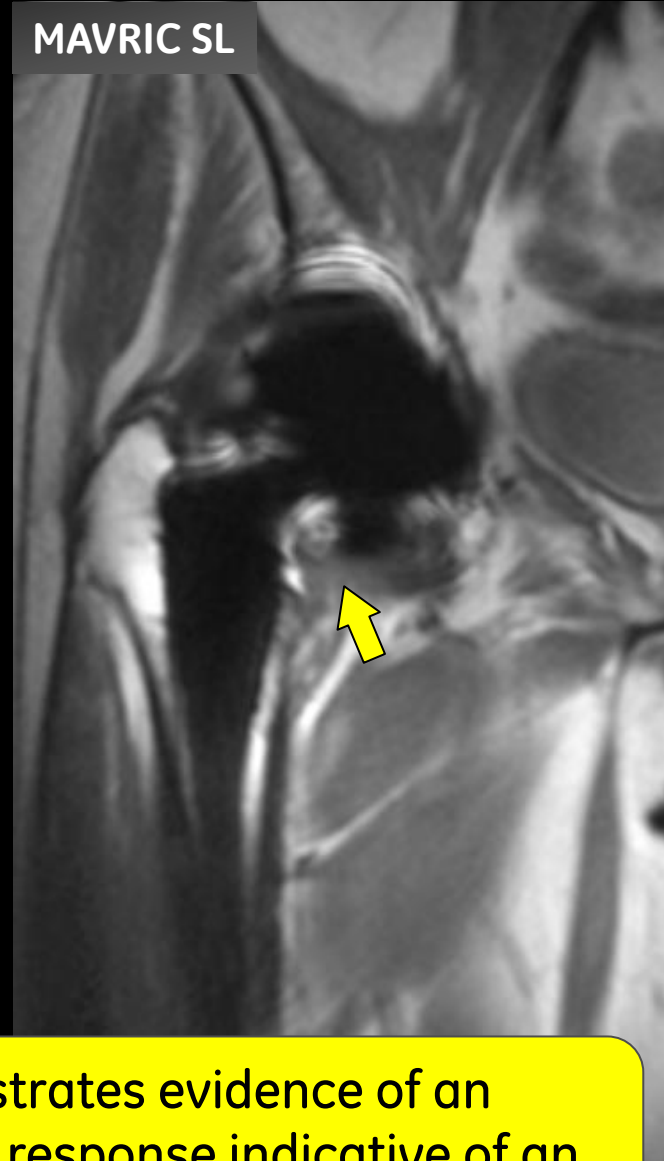
X-Ray



2D PD FSE (MARS)



MAVRIC SL



MAVRIC SL demonstrates evidence of an abnormal synovial response indicative of an adverse tissue reaction (arrow)

- 65 yo with severe pain over several month duration, following total hip replacement 3 years earlier
- no pathology seen in X-Ray or conventional MRI
- MAVRIC SL showed clear evidence of an abnormal synovial response indicative of an adverse tissue reaction (arrow)
- the patient was indicated for a revision surgery



# Ankle Fixation Hardware

2D PD FSE (MARS)



MAVRIC SL



Visualization of posterior facet cartilage in the presence of tibial fixation hardware (yellow arrow)