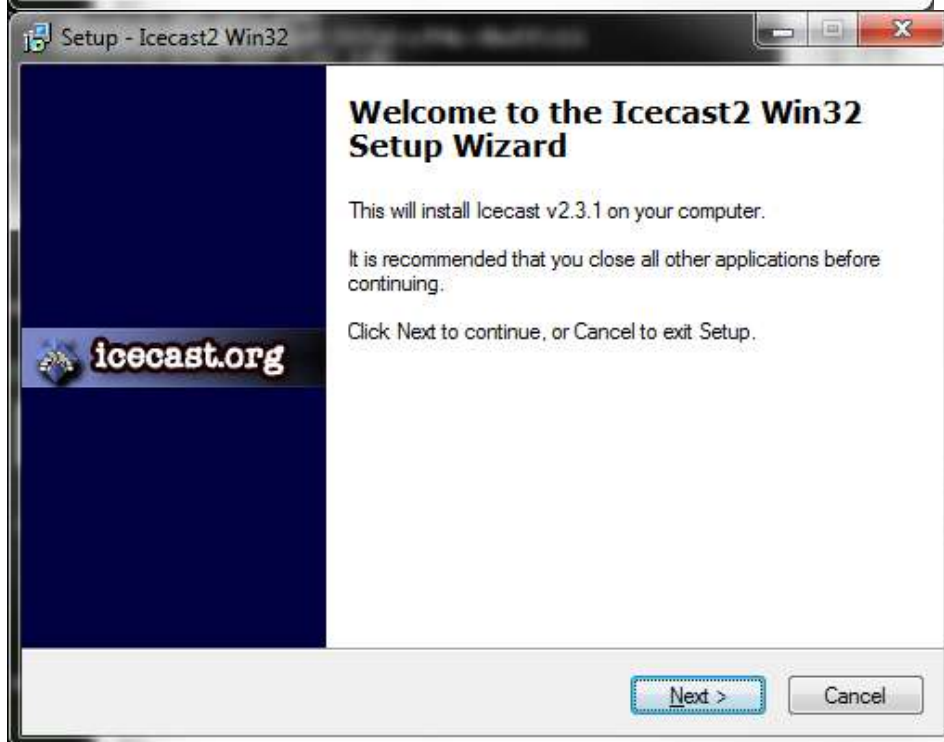
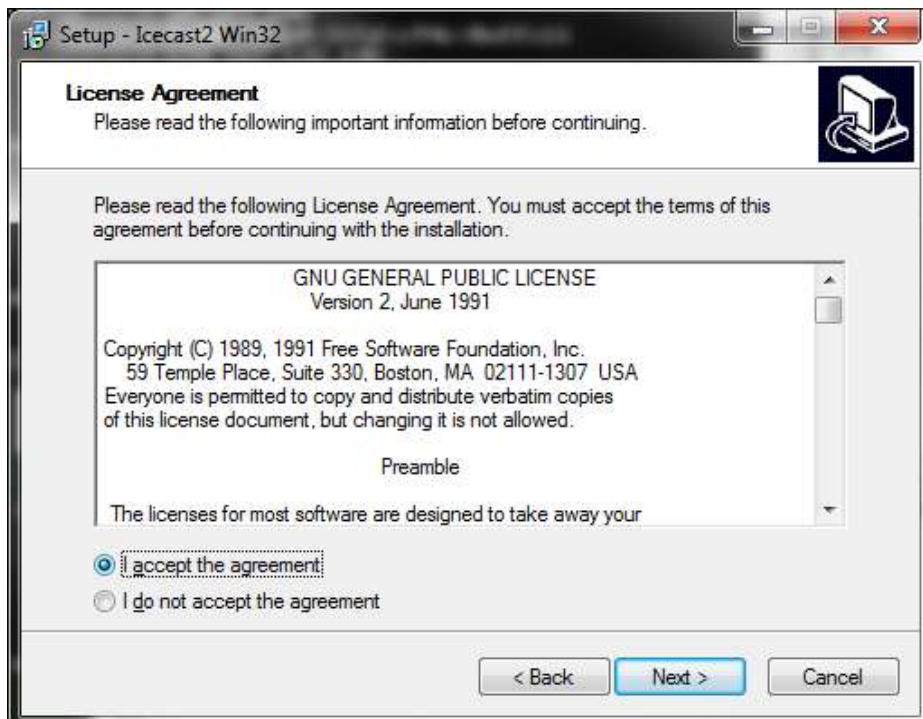


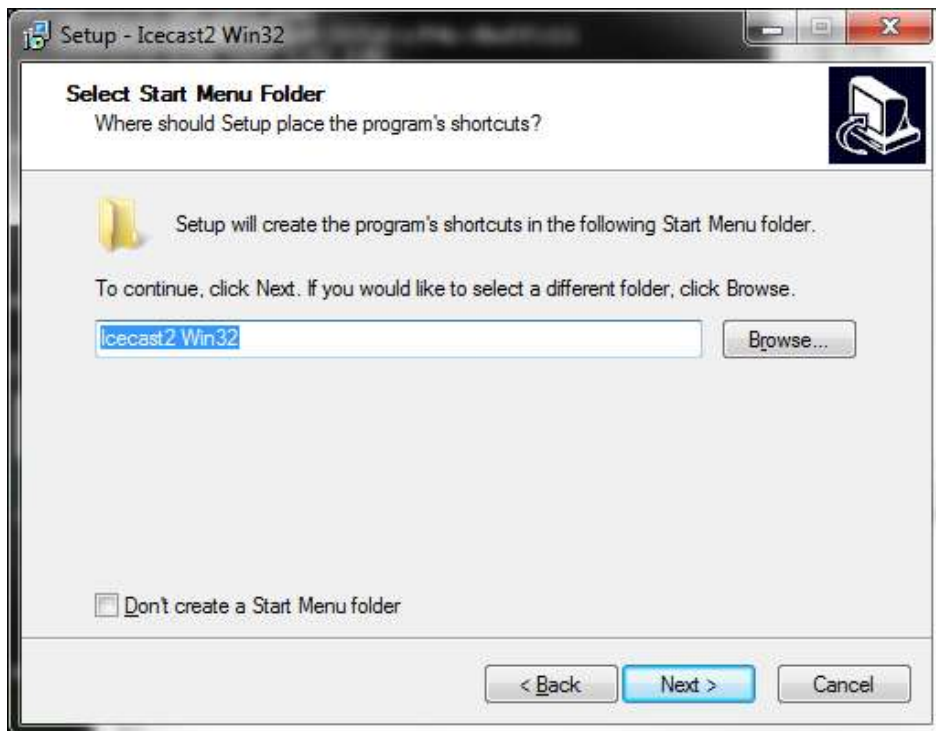
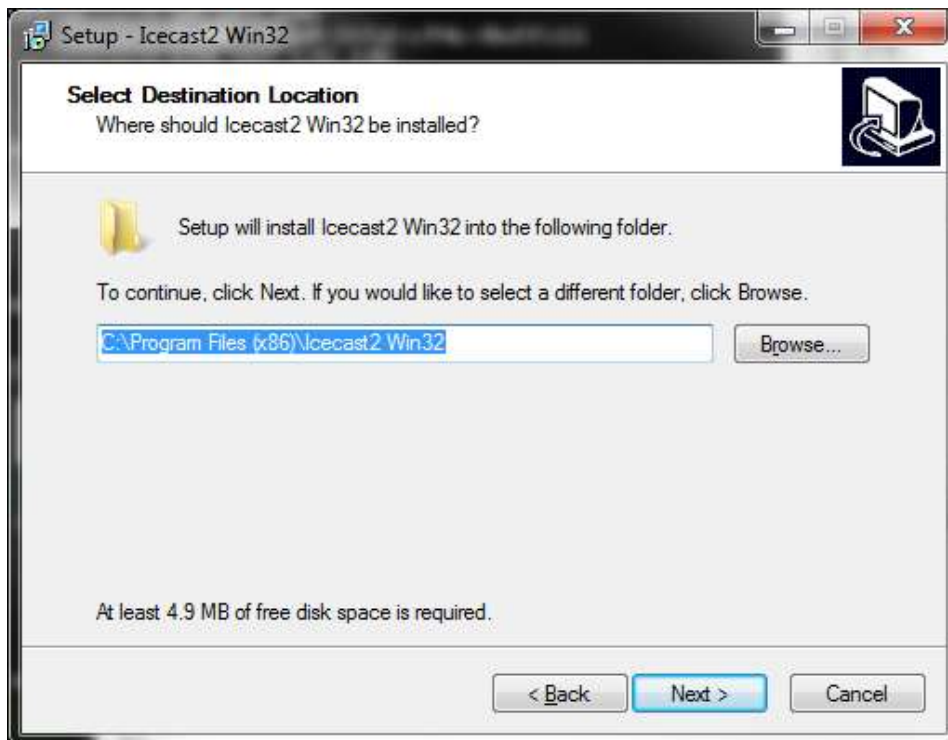
Switching to Icecast from Shoutcast with Winamp

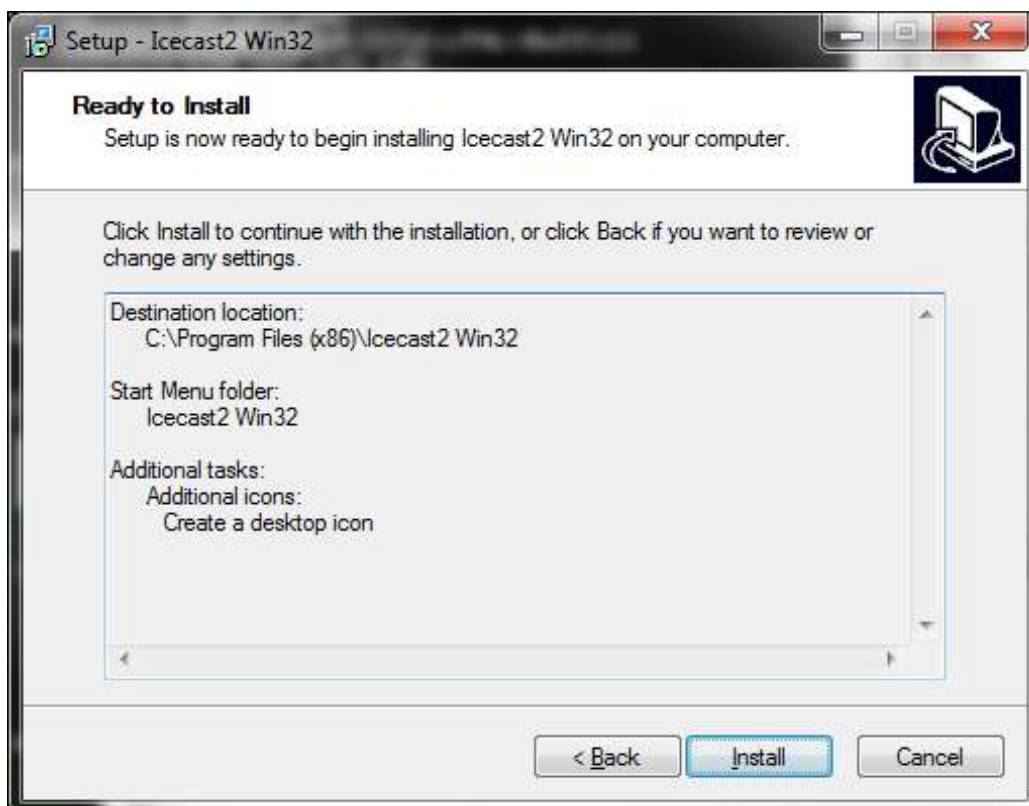
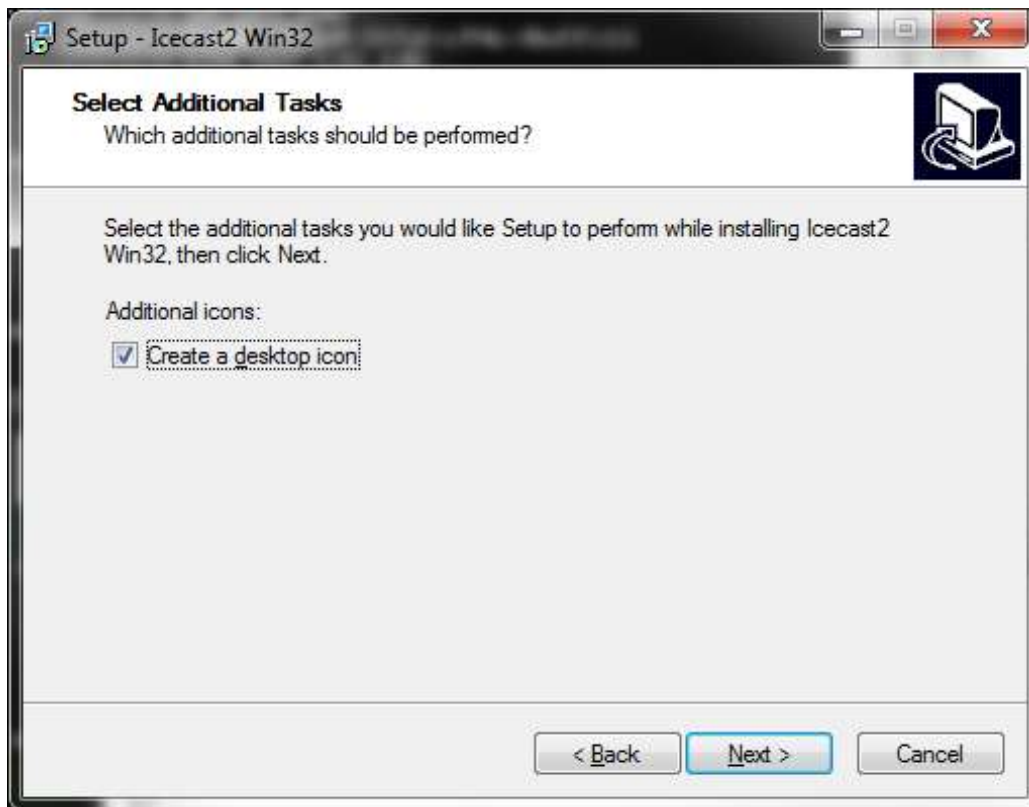
By Iowa Public Radio

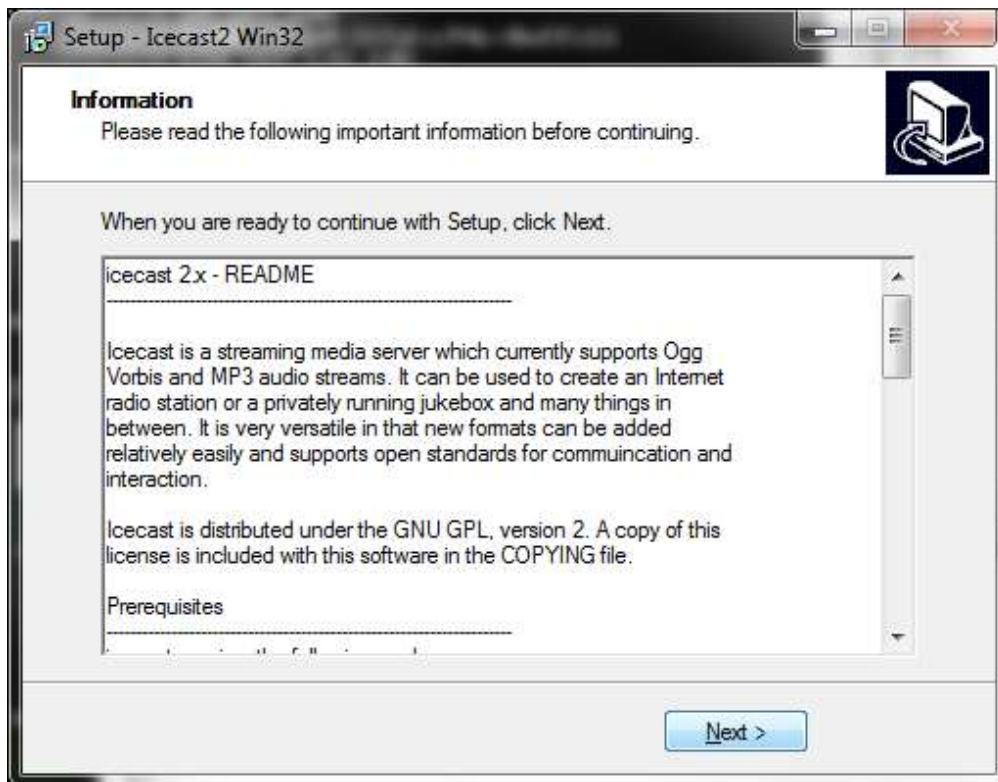
This assumes you are using a Windows 7 Operating system running without User Account Controls and are encoding your stream using Winamp and the Shoutcast Source for Winamp. This guide is using a 64 bit computer. If using a 32 bit OS make sure you direct files to the correct **Program Files** folder

While Shoutcast is running, install the latest Windows Icecast installer which is currently [2.3.1](#) If UAC is enabled, make sure the installer is run with administrative privileges to ensure a successful installation.







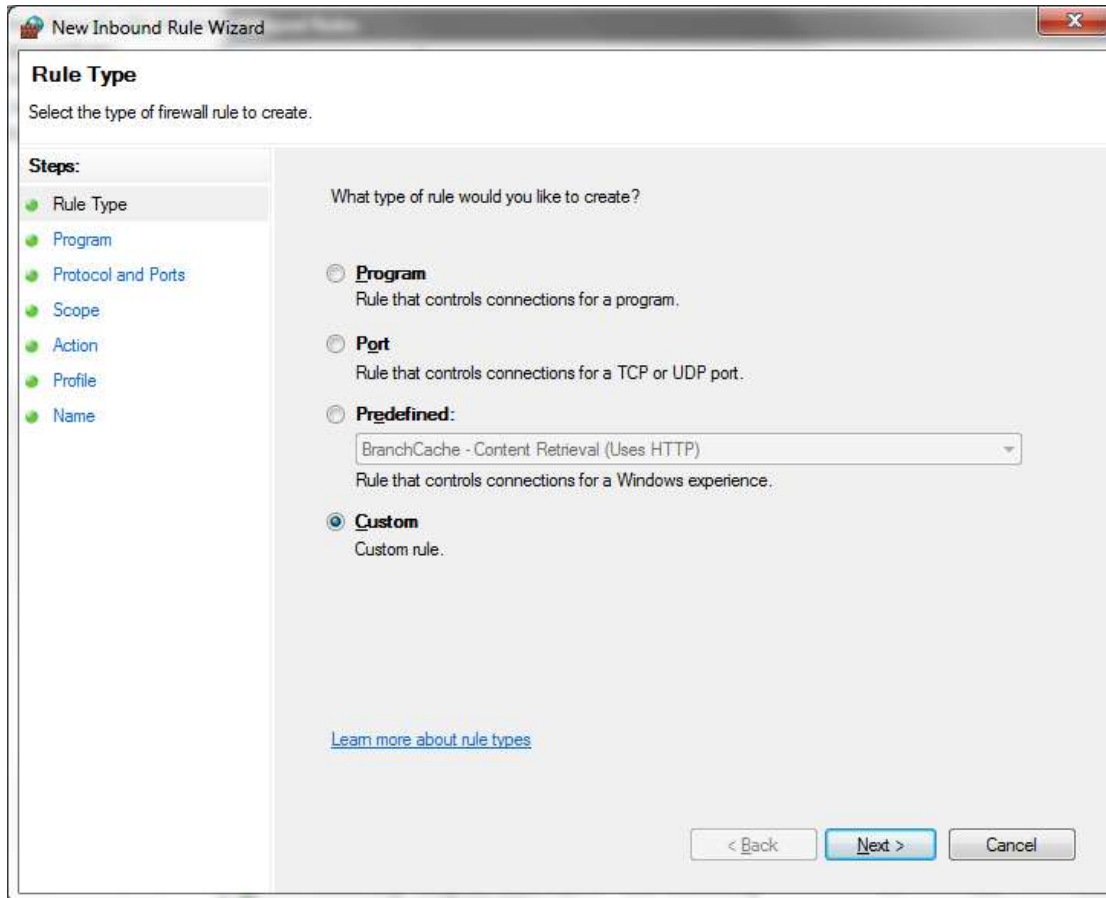


When installing, Iccast doesn't provide information to windows Firewall for the service. To add this, go to **Windows Firewall with Advanced Security** and select **Inbound Rules**.

This will have to be done twice with the only change being one for TCP and one for UDP.

On the right select **New Rule** and go through the wizard as follows.

Select **Custom** -



Change **this program path** to **%ProgramFiles% (x86)\Iccast2 Win32\IccastService.exe**.

New Inbound Rule Wizard

Program

Specify the full program path and executable name of the program that this rule matches.

Steps:

- Rule Type
- Program
- Protocol and Ports
- Scope
- Action
- Profile
- Name

Does this rule apply to all programs or a specific program?

All programs
Rule applies to all connections on the computer that match other rule properties.

This program path:

Example: c:\path\program.exe
 %ProgramFiles%\browser\browser.exe

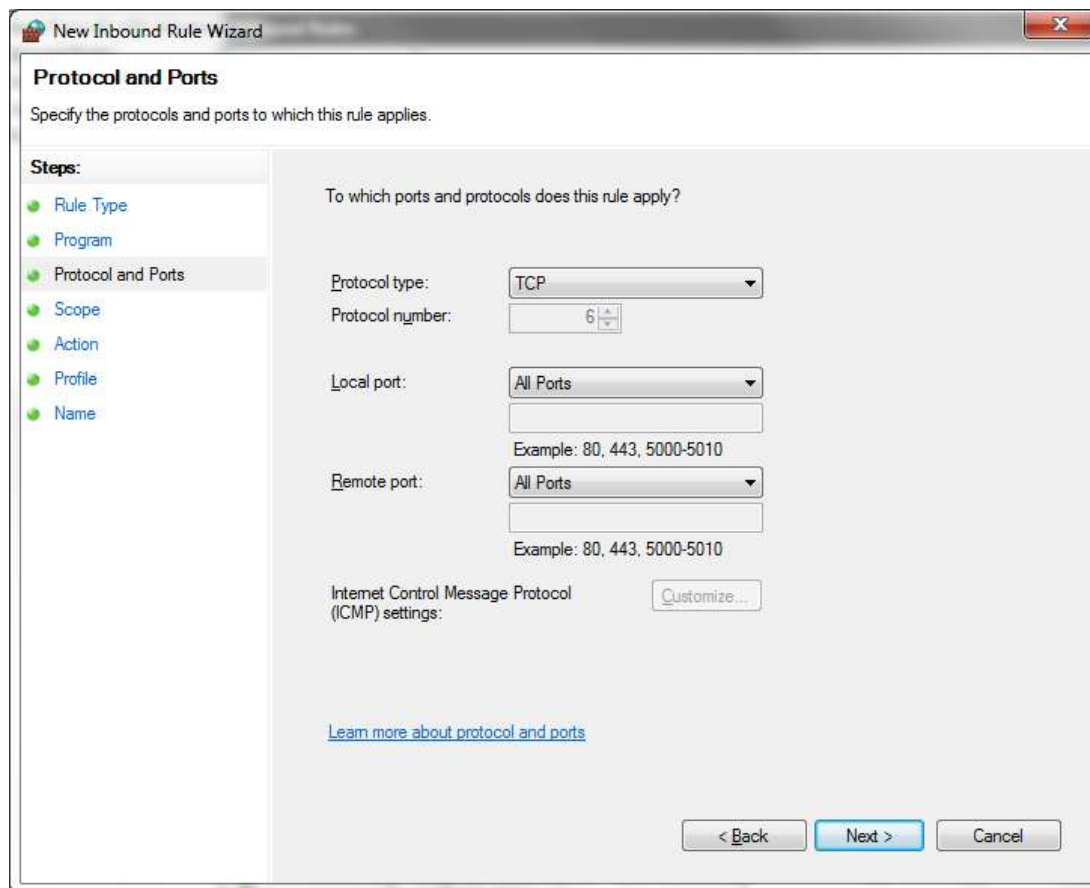
Services

Specify which services this rule applies to.

[Learn more about specifying programs](#)

< Back Next > Cancel

Set up the **Protocol and Ports** for the protocol type **TCP**.



Allow **ANY/ANY** for the IP addresses. If you need to block certain address you can in this window.

New Inbound Rule Wizard

Scope

Specify the local and remote IP addresses to which this rule applies.

Steps:

- Rule Type
- Program
- Protocol and Ports
- Scope**
- Action
- Profile
- Name

Which local IP addresses does this rule apply to?

Any IP address

These IP addresses:

Customize the interface types to which this rule applies:

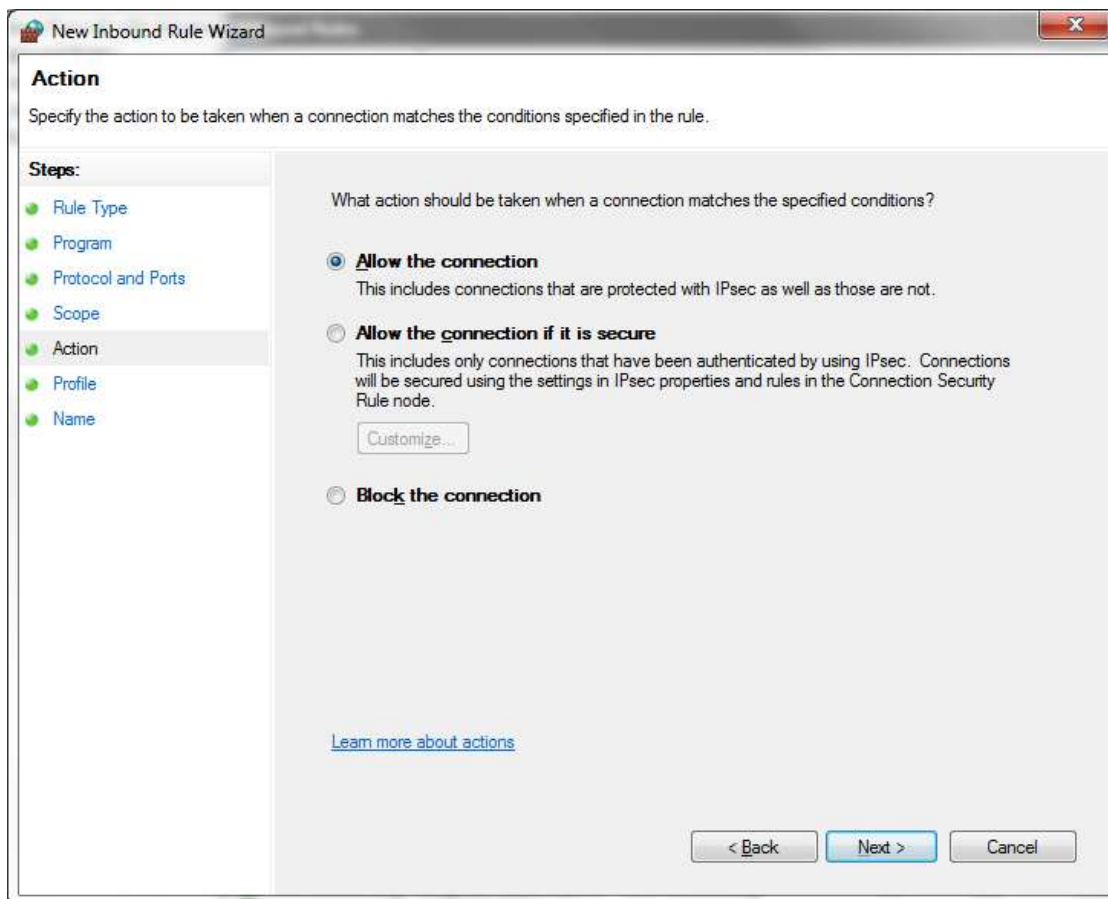
Which remote IP addresses does this rule apply to?

Any IP address

These IP addresses:

[Learn more about specifying scope](#)

Under **Action** select **Allow the connection**



Under **Profile** select which network types this rule is applied to.

New Inbound Rule Wizard

Profile

Specify the profiles for which this rule applies.

Steps:

- Rule Type
- Program
- Protocol and Ports
- Scope
- Action
- Profile
- Name

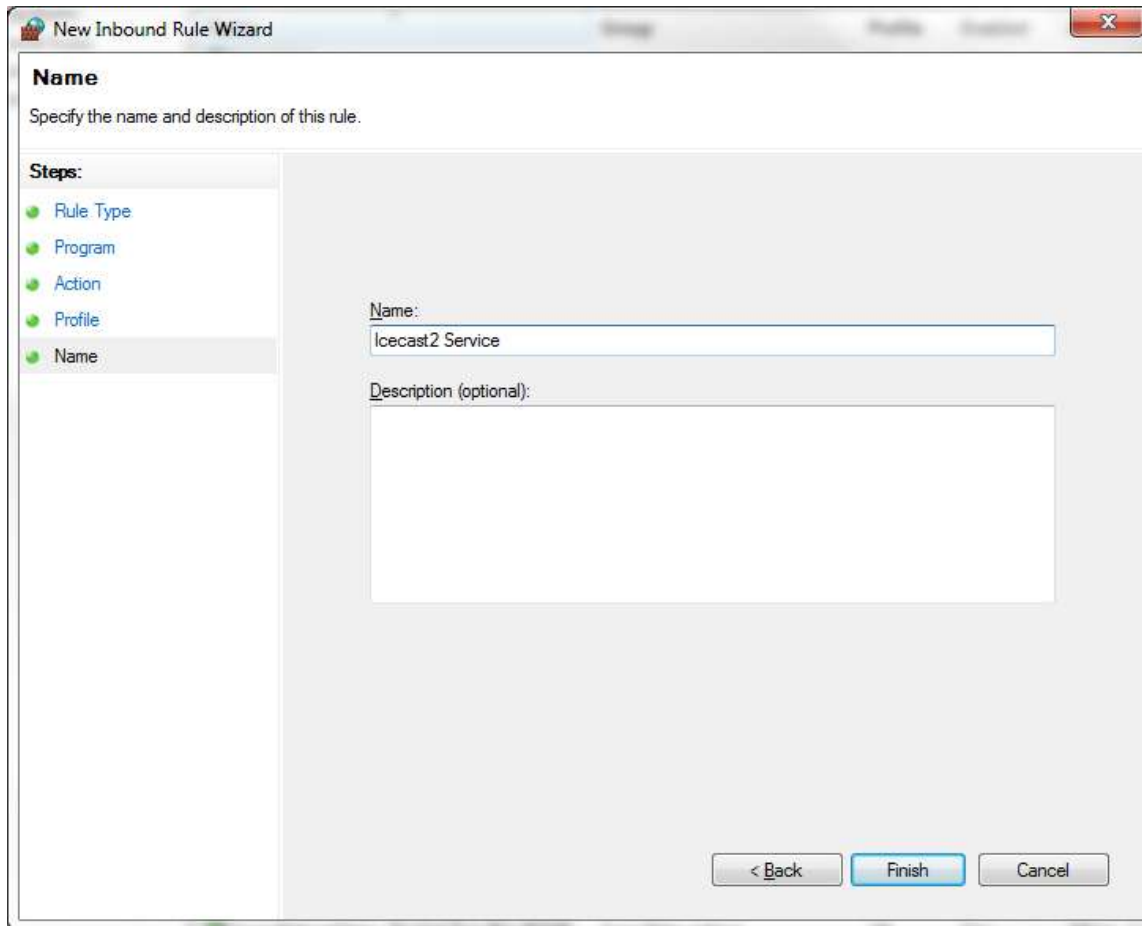
When does this rule apply?

- Domain**
Applies when a computer is connected to its corporate domain.
- Private**
Applies when a computer is connected to a private network location.
- Public**
Applies when a computer is connected to a public network location.

[Learn more about profiles](#)

< Back Next > Cancel

Name the firewall rule



Finally the information in the Icecast folder needs to be changed.

Configuration file

Icecast comes with a configuration file premade for converting from Shoutcast called `icecast_shoutcast_compat.xml`. Simply rename this file to `icecast.xml` and edit the categories for **Source-password**, **Admin-Password**, and **Shoutcast-mount**. An example `icecast.xml` is also posted on the last page of this document.

Source-password needs to be the same as the password listed in the Shoutcast Server configuration file.

Admin-Password will be the password used to let you access the admin side of the web server generated by Icecast.

Shoutcast-mount is where the stream is actually mounted. To ensure the minimum amount of user confusion during a switchover it is best to switch this from change **<Shoutcast-mount>/stream</Shoutcast-mount>** to **<Shoutcast-mount>/</Shoutcast-mount>**. This ensures that anyone using the Shoutcast generated file and any NPR streams don't have to change. If this is not changed your stream mount point will change from <http://yourstream:8000> to <http://yourstream:8000/stream>.

Web configuration

Icecast generates an .m3u file for listeners. If you want to continue using a listen.pls file it needs to be manually edited and added to the web folder of the Icecast server. The easiest way to do this is to simply copy your current listen.pls to the **web** folder located in the Icecast installation directory.

Once everything has been configured you and to ensure minimum downtime open a **command Prompt** as administrator. When you stop the Shoutcast server simply run **net start icecast** in your command prompt and Icecast will start running again. Ensure the encoder has connected to the new Icecast server. If everything has been configured properly users will automatically begin connecting again.

Typically this will all take about 30-60 minutes to configure. I have transferred 3 servers over to Icecast in this method and all of them went without a problem. Make sure that when you check your stream you now go to <http://yourserver:8000/status.xml> as <http://yourserver:8000> used with Shoutcast will not lead directly to the music stream.

```
<icecast>
  <limits>
    <sources>2</sources>
  </limits>
  <authentication>
    <source-password>changeme</source-password>
    <admin-user>admin</admin-user>
    <admin-password>changeme</admin-password>
  </authentication>
  <directory>
    <yp-url-timeout>15</yp-url-timeout>
    <yp-url>http://dir.xiph.org/cgi-bin/yp-cgi</yp-url>
  </directory>
  <shoutcast-mount>/</shoutcast-mount>
  <hostname>localhost</hostname>
  <listen-socket>
    <port>8000</port>
  </listen-socket>
  <listen-socket>
    <port>8001</port>
    <shoutcast-compat>1</shoutcast-compat>
  </listen-socket>
  <fileserve>1</fileserve>
  <paths>
    <logdir>./logs</logdir>
    <webroot>./web</webroot>
    <adminroot>./admin</adminroot>
  </paths>
  <logging>
    <accesslog>access.log</accesslog>
    <errorlog>error.log</errorlog>
    <loglevel>3</loglevel> <!-- 4 Debug, 3 Info, 2 Warn, 1 Error -->
  </logging>
  <security>
    <chroot>0</chroot>
  </security>
</icecast>
```