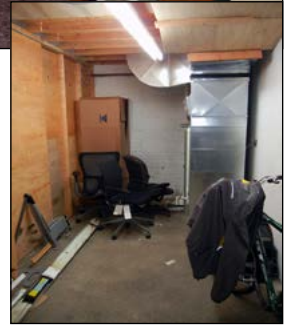


When is SPR Moving to Fire Station No. 3? NOW!



Above: Fill 'er up! *The Herb A & Billie Severtson Main Classical & Jazz CD Library* just off the new Performance Studio can hold 11,000 CDs comfortably. Right: The library space began as a storage nook.



It's a daunting task – packing up years of stuff and carting things to a new home. After 35 years SPR has a lot to move. As construction on SPR's studios at Fire Station No. 3 wraps up, the staff is packing in earnest.

The biggest concern is the logistics of moving Spokane Public Radio's services without turning them off for the move. Chief Engineer Jerry Olson is in charge of keeping all three stations alive during the process. It's an intricate dance.

"First we need the main audio backbone in place," Jerry says. "The control boards and connections to the central tech room have to be ready before we move any input devices – the microphones, CD players and turntables. The other crucial piece is establishing new radio connections between the studios and the transmitter sites. It's not quite as simple as plugging in and flipping a switch."

General Manager Cary Boyce moved a station twice before – once out of a permanent space to a temporary facility, then back in. "Things always look great on paper – but with any complicated project, obstacles come up," he says. Some you see coming, others you don't expect. But it gets done, and SPR is almost home."

"We are in the cleanup phase of the Moving to a Sound Future capital campaign," Cary adds. "Now it's a matter of cash flow – staying afloat while we move the stations and receivable pledges come in. We can't slow down the move for a pledge drive, so we're moving the on-air drive to November. We're ramping up a 'Warp Drive' October 19-30 to keep our operations going even as we move. And we've really sweetened the prize drawings to encourage listeners to pledge support at the usual time."

Coming up with Spokane Public Radio



KPBX Kids' Concert: Tedesca

Saturday, October 3, 1 p.m. – FREE at River Park Square in Downtown Spokane

The string quartet performs a variety of music in honor of Autumn with pizzazz and a sense of humor.



SPR Goes To The Movies: *Alien*

Thursday, October 8, 6:30 p.m. at the Bing

The *Movies 101* crew discusses the horror film genre, followed by a showing of Ridley Scott's 1979 sci-fi/horror classic. Presented with Friends of the Bing, tickets available at TicketsWest.



SPR Presents Paula Poundstone

Thursday, October 15, 7:30 p.m. at the Bing

The comedian and frequent *Wait Wait, Don't Tell Me!* panelist returns to Spokane on her mission to make the country laugh! Tickets available now at TicketsWest.



David Sedaris

Thursday, November 12, 7:30 p.m. at the Bing

The author and humorist brings his sardonic wit and incisive social critiques back to Spokane. Tickets available through TicketsWest. SPR is a Media Partner of this event.



KPBX broadcasts live from the Fall Folk Festival

Saturday, Nov. 14, 11 a.m.-1 p.m. – FREE at SCC Lair Auditorium, Mission at Greene.

Verne Windham and Carlos Alden host a sampling of musical artists. Be part of the live audience at Spokane Community College as the event is broadcast on KPBX.



KPBX Kids' Concert: Sourdough Songs - Music from the Alaska Klondike

Saturday, November 21, 1 p.m. – FREE at the Bing

Brad Keeler and Linda Parman look for gold in 1890s-era songs.

More Event Information Online at SpokanePublicRadio.org

Unpacking Treasures

Our main service—sound—isn't tangible but we have documents going back to the beginning of KPBX. They include:

- Newspaper stories tracking the development of a little basement station into a full-fledged NPR affiliate.
- Early photos of Terry Gross, Noah Adams, Cokie Roberts, Garrison Keillor, and other public radio legends.
- Posters or fliers from every event SPR held in the past three decades.

Many of the paper items will be scanned into the SPR archives for preservation and staff use. We will showcase reproductions of the most interesting documents and photos on our upcoming "Wall of History" in Fire Station No. 3.



KPBX Program Grid / October-December 2015

	Mon	Tues	Wed	Thurs	Fri	Sat	Sun
Mid						Brazilian Hour	Live Wire
1a	BBC World Service					BBC World Service	
2a							
3a							
4a							
5a	NPR's Morning Edition					NPR's Weekend Edition	
6a	Local News 6:44a, 7:04a, 7:44a, 8:04a, 8:44a						
7a	Weekday Arts Calendar 6:20a, 7:20a, 8:20a, 2p, 6:29p						
8a	Morning Classical with Verne Windham					Sunday Morning Essay 9:34a	
9a						Weekend Arts Calendar 6:18a, 7:18a, 8:18a, 9:18a, 11:55a	
10a						Classical Music Jan Munstedt	Classical Music Leonard Oakland
11a	Harmonia	Piano Bench	Footlight Parade	Guitar Hour			
Noon	Living on Earth	Public Forums	Zorba Paster	Public Forums	This American Life	From the Top	Radiolab
1p	Fresh Air with Terry Gross				Jazz for a Friday Afternoon with Brian Flick	Fascinatin' Rhythm	Front Porch Bluegrass
2p	Performance Today					Wait Wait Don't Tell Me	Nacho Celtic Hour
3p							
4p	Marketplace						Selected Shorts
5p	NPR's All Things Considered Local News 4:44p, 5:04p, 5:44p, 6:04p					NPR's All Things Considered	
6p						Car Talk	A Prairie Home Companion
7p	The Bookshelf				Movies 101	Saturday Cafe Michael Patoray	Inland Folk with Dan Maher
8p	Concert of the Week	L.A. Theatre Works	World of Opera	Santa Fe Chamber Music Fest	Swingin' Down the Lane		
9p	This American Life	The Score		Chicago Symphony Orchestra	Friday Night Jazz	Johnson's Improbable History of Pop	
10p	Jazz 'til Midnight Jan Munstedt	Jazz 'til Midnight Brian Flick	Afterglow	Jazz Night in America	Jazz	Backwater Blues	Soundspace with Zan
11p			Night Lights Jazz Review	Jazz-O-Rama	Odyssey	Beale St. Caravan	Hearts of Space



Kelly McEvers co-hosts *All Things Considered*, NPR's afternoon news magazine weekdays from 4:30-6:30 p.m. on KPBX.



Eckart Preu conducts the Spokane Symphony Orchestra; Classics Concerts are repeated on *Concert of the Week* Monday nights at 8 p.m. on KPBX.

SPR On the Move Continued from Front

NPR itself moved to new headquarters in 2013 and wrote about the experience. Even with all-new equipment, the process was not easy. In the reports, all of the engineers said, "I want those four months of my life back!"

SPR is working to minimize any downtime in service as the move progresses. This means SPR will juggle resources and feeds between locations until the move is entirely complete. The backup generator was moved to the Fire Station, so fingers are crossed that the power stays on at the Hoban Building. A new satellite dish on the roof of the Fire Station can access national and international feeds, and the two buildings are temporarily linked by a special computer network connection. For a time the broadcast signal will come from one or the other facilities depending on the station (KPBX, KSFC, KPBZ) or the program feed (NPR Satellite or local) as necessary.

SPR will move in several stages over the next three months or so – the administration folks first, then most likely one studio at a time. KPBX may be the first to make the leap, since KPBZ and KSFC are technically entwined on the

KSFC Program Grid / October-December 2015

	Mon	Tues	Wed	Thurs	Fri	Sat	Sun
Mid							
1a							
2a	World Radio Network					World Radio Network	
3a							
4a							
5a	BBC World Service					Weekend Edition Saturday	Weekend Edition Sunday
6a	NPR's Morning Edition Local News 6:06a, 7:06a					Living on Earth	It's Your World
7a	On Point					Travel w/ Rick Steves	TED Radio Hour
8a						Car Talk	Interfaith Voices
9a	Native America Calling					NPR's Weekend Edition	
10a	The Takeaway				Science Friday	Wait, Wait Don't Tell Me	You Bet Your Garden
11a	BBC Newshour					On the Media	Zorba Paster
Noon	NPR's All Things Considered					Movies 101 Treatment	People's Pharmacy
1p						Take Five	Innovation Hub
2p	BBC World Service					This American Life	America's Test Kitchen
3p	On Point - Repeat of 9a hour					NPR's All Things Considered	
4p	BBC World Service					BBC World Service	
5p	Marketplace					Director's Choice	Write Question Cambridge Forum
6p	NPR's All Things Considered					Fresh Air Weekend	City Arts & Lectures
7p	Fresh Air with Terry Gross					A Way w/ Words	
8p	As It Happens					Live Wire	Selected Shorts
9p	On the Media	Common-wealth Club	Philosophy Talk	Human-kind	Alternative Radio	Snap Judgment	Selected Shorts
10p	On Point - Repeat of 8a hour				Science Friday	Big Picture Science	Wait, Wait Don't Tell Me
11p	BBC World Service					Tech Nation	Le Show



Ari Shapiro co-hosts *All Things Considered*, NPR's afternoon news magazine weekdays from 1-3 p.m. and partially repeated 6-7 p.m. on KSFC.



Michele Martin hosts *Weekend All Things Considered*, Saturdays and Sundays from 4-5 p.m. on KSFC.

signal's journey to the tower at Lookout Mountain.

We'll keep the transition as smooth as possible, but chances are that listeners will hear some klunks. Some overnight hours will go silent as new equipment is installed and tested. "Stutters" may break up the audio as we switch from one feed to another. Whatever happens, SPR staff will do their best to minimize any interruptions in service. The final result, however, will be a more stable and secure service for decades to come.

By January 2016 (Happy New Year!), the entire SPR operation will be contained in the historic Fire Station No. 3 at 1229 N. Monroe Ave. Visit SpokanePublicRadio.org for photos and updates on the moving progress. Details about the 36th Anniversary and Grand Opening in January 2016 will be coming soon!

Finally, Cary adds, "It's going to be a very special Cyberdrive in October. And during the on-air drive in November, we'll have an ongoing Open House! Tours, refreshments, live broadcasts, and more. Come and see for yourself how this move is going to expand our service!"

Spokane Public Radio Annual Membership

Annual or additional contributions to Spokane Public Radio are always welcome.

Mail to: Spokane Public Radio / 2319 N. Monroe St., Spokane, WA 99205

THANK YOU FOR YOUR SUPPORT

Premium Preference

- No Guide Newsletter
- Email link to The Guide (Provide email address below)
- Send me the The Guide via U.S. mail

Name(s) _____

Address _____

Day Phone () _____ Evening Phone () _____

E-Mail _____

Send Gift Subscription

Name(s) _____

Address _____

Payment Information

Send me information about Sustaining Membership

Full payment enclosed

First payment of \$ _____ enclosed

Charge my Visa/Mastercard/Discover/AMEX

One payment Monthly Quarterly

_____ Exp. _____ / _____ (mo/yr)

Name on Card _____

Pledge securely on-line:
spokanepublicradio.org

Membership Type

- New membership Payment on current pledge
- Membership renewal Gift membership - please call me for details

Amount of Donation

\$45 \$75 \$100 \$140 \$200 \$250 \$365 \$500 \$750

\$1,000 Sound Circle (call for details) Other \$ _____

Engage! SPR Moving in “Warp” Drive

This fall we’re moving the Pledge drive – both to a new location (our new home in the historic Fire Station No. 3!) and to a new time just for this fall. Once the move begins, we can’t slow down, or we’ll risk more than minimal downtime. So SPR’s traditional on-air pledge drive will take place November 17-21.

That’s where the Warp Drive comes in. We still need to keep the lights on (in two places, for a bit). So we’ll

hold this “cyber drive” where listeners and supporters can pledge online from October 19-30. If you don’t like computers, you can still call the station during business hours (9 a.m.-5 p.m. Mondays-Fridays) at (509) or (800) 328-5729. You’ll be entered to win some very cool prizes, such as tickets to David Sedaris on November 12. As usual, all Sustaining Members and are entered automatically.

So engage the Warp Drive, as we rapidly move the mother ship from one location to the other! Great prizes, updates on our moving progress, and a convenient Donate button are at SpokanePublicRadio.org!

**Online “Warp Drive”
October 19-30
On Air Pledge Drive
November 17-21**



FROM the STUDIO

Never miss an Arts interview again. SpokanePublicRadio.org/programs/studio

Spokane Public Radio
2319 North Monroe Street
Spokane, WA 99205

**KPBX 91.1 FM / Spokane, WA
transmits on the following
FM frequencies:**

Bonner's Ferry, ID / KIBX 92.1
Brewster, WA / KPBW 91.9
Enterprise, OR / 89.3
Grand Coulee, WA / 91.9
Kellogg, ID / KLGG 89.3
Omak, WA / KOMQ 88.5
Oroville, WA / KPBG 90.9
Sandpoint, ID / 101.7
South Hill, Spokane, WA / 90.7
Thompson Falls, MT / 103.9
Twisp/Winthrop, WA / KTWP 91.1

**KSFC 91.9 fm / Spokane, WA
transmits on the following
FM frequencies:**

Omak, WA / 88.9
St. Maries, ID / KXJO 92.1

KPBZ 90.3 fm / Spokane, WA

Stream at:
kpbx.org / ksfc.org / kpbz.org

Printing by Hearn Brothers Printing
Mailing by Walt's Mailing Service & Presort



Part of the **npr** network