

k·m·u·w·89.1
WICHITA PUBLIC RADIO



2014 Large Market
**Radio Station
of the Year**

c·o·n·n·e·c·t
Annual Report 2014



Mission Statement:

KMUW promotes insightful discussion and understanding of the issues and people that shape Wichita and our world by providing in-depth, quality news coverage, offering a distinctive blend of diverse music and promoting conversations that create a more engaged community. KMUW Wichita Public Radio is an outreach service of Wichita State University.

Vision:

To fulfill its mission of public service, Wichita Public Radio will expand the reach and quality of its local news and information programming to become the standard for local reporting of substantive issues, current events of interest to the community and coverage of the arts in and around Wichita. KMUW will:

- Define its local music programming focus to reflect its mission to provide a unique blend of jazz, blues, world and adult acoustic alternative, with consistency of style, content and quality of presentation
- Reflect the core values of public radio in all programming elements
- Maximize staff capabilities through station-wide application of the core values of public radio, ongoing skills training, and continuing education opportunities to deliver identified results
- Evaluate allocation of resources within the station's key strategic areas to meet growth opportunities identified by the strategic plan
- Provide staff with contemporary and reliable technology to develop and deliver content to better serve the audience through various delivery systems
- Develop a strong, diverse and reliable resource base to adequately meet the current and future demands of the station

KMUW Case Statement:

Wichita Public Radio provides an expansive service to the community, but there's so much more that can be done. In an effort to map out the station's future, we've created a case statement outlining the following needs of the station:

- More news staff, including more reporters, producers, editors and public relations assistants, to bring you more local news coverage
- A new physical space for our growing staff and updated equipment to keep our team technologically current and able to innovate
- A community space with a flexible theater area for performances and events, an expanded kitchen area for hospitality and a larger conference room for community meetings to discuss public issues



KMUW - Wichita Public Radio

Telling the Story of Wichita

Dear Listener,

Our job at KMUW is to tell the story of Wichita...to Wichita and the world. I've learned in just five months of being here that there are many amazing aspects to this community. We often don't know what's just around the corner, and we know the world isn't aware of the wonder that is Wichita!

You are an important part of that story. You've told us that you want to help make Wichita even better. Let's do it together as KMUW continues to expand its news coverage and storytelling. We hope you've noticed and that you've learned something more about your own neighborhood. The news isn't always bright and shiny, but we strive to provide you with the 'why' and 'how' on topics of concern, too.

KMUW tells stories in many ways. The news coverage tells a story. The evening music tells a story. The businesses that support KMUW tell a story. The shows that make us laugh on weekends tell a story. Our outreach events tell a story. Community partnerships tell a story. You tell a story when you make a donation. It's all connected, and that's why it works so well.

In the coming year, expect to hear more Wichita news stories, talk with us at community events, interact with us online, and enjoy music from around the world and here at home. I'm excited by all of this! It's a great time to be curious.

Thank you all for the generous welcome to Wichita and KMUW.

Stay Tuned,



Debra Fraser



Debra Fraser accepting KMUW's
2014 Station of the Year Award

The Difference a Year Makes

The New Face of KMUW

We've been busy making KMWU a greater station for you throughout the past year, and now we are bursting at the seams.

Starting with Aileen LeBlanc, who joined us as News Director in September of 2013, the KMWU staff has grown into a community-building force to be reckoned with. Sean Sandefur came to KMWU in January of 2014 as a full-time news reporter. Debra Fraser became the station's new general manager in July and has paved the way for our new vision.

Dalton Black, Abigail Wilson, and Jordan Kirtley all came on board in the last 18 months as interns, but it quickly became clear that each of them could benefit the station so much more: in community engagement, reporting, graphic design and other tasks. So, we hired each one full-time.

Beth Golay came on board in July of 2014, becoming digital content marketing manager. Deborah Shaar joined the staff as a part-time news reporter in September 2014. Shannon Glover joined us as a development intern in August of 2014, helping to improve our student membership group, the Stubblefield Society.

Amid all the new faces, we're also losing a familiar one. Denise Irwin retired this November. Denise started at KMWU in 2008 as development director and worked alongside station leaders to build a major donor program and streamline processes. She semi-retired in 2012 to focus on marketing. Now she is ready to spend more time with family, friends, her beautiful (and abundant) garden, and her sculpting.

The result of all these changes is that KMWU will be bringing you more of what you love in 2015. Get ready for increased local news coverage and more ways to experience the station's high-quality music and information programming.

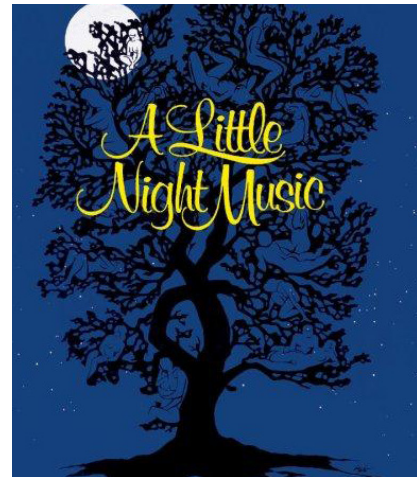
Left, top to bottom: Aileen LeBlanc, Sean Sandefur, Debra Fraser
Group photo: Dalton Black, Jordan Kirtley, Abigail Wilson
Right, top to bottom: Beth Golay, Deborah Shaar, Denise Irwin



Facets of the Wichita Diamond

KMUW takes you around the world on a daily basis. But when your public radio station not only opens new horizons within your own community, but speaks to what makes the Wichita area remarkable: that's something special. KMUW has been building its local content for several years and is proud to bring you more local commentaries and increased local news coverage.

Among our lineup are book and movie reviews, food and art commentaries, insights into history, gaming, and the English language. 2014 saw the addition of On Stage, a theatre commentary from Sanda Moore Coleman, and Beautiful City from Zack Gingrich-Gaylord. Sanda's insights in the world of theater are abundant. She has spent more than 30 years performing, reviewing, and writing for theatre. Zack, meanwhile has developed a breadth of knowledge in the world of graffiti. We also started the feature Wichita Mosaic, a glimpse into the lives of notable locals. More new commentaries and features are coming in 2015 too...so stay tuned.



Stephen Sondheim's musical "A Little Night Music"



Street graffiti at Hope Gallery in Austin, Texas. Photographed by Zack Gingrich-Gaylord.

TED Takes to a New Stage

We could tell you why you should look at the clouds more often, or why someone would choose not to speak a word for 17 years. We could tell you about big ideas on how to solve seemingly impossible problems. We'd simply direct you to Sunday afternoons on KMUW. Our weekend lineup has seen some excellent changes in the past few years as we introduced Snap Judgment and RadioLab to the schedule in 2013...and 2014 was no exception. We were proud to start carrying TED Radio Hour on Sundays at 2pm, starting in July.



John Francis: 'How Do Years Of Silence Change Someone?'

TED Radio Hour is NPR's reconstitution of TED Talks, a nonprofit organization devoted to "ideas worth spreading," which began in California 25 years ago. It's a journey through fascinating ideas, innovation, inventions, and new ways to look at old problems. Hosted by NPR's Guy Raz, TED Radio Hour is the fastest-growing public radio show in history.

There's a lot to enjoy coming across the airwaves on 89.1 FM or streaming through KMUW.org, and we're proud to bring it to you every day.



A Rewarding Effort Station of the Year

Everyone likes to win an award. It's validation for a job well done. But when your public radio station garners the enviable title of Large Market Radio Station of the Year from the Kansas Association of Broadcasters (a category which includes both commercial and non-commercial radio stations) as well as nine other awards from the KAB, then it's something to shout from the rooftops. Here's where we clear our throats. (Ahem, ahem, ahem.)

News Director Aileen LeBlanc hit the ground running when she came to the station in September of 2013. Since her arrival, she has produced radio documentaries and call-in shows on topics such as the Affordable Care Act and the abortion debate from local perspectives. Plus, her feature on primary care doctors won the distinguished Edward R. Murrow award.

As for the KAB awards, Aileen is joined by News Reporter Sean Sandefur, *All Things Considered* Host and Producer Fletcher Powell, Digital Assistant Hugo Phan, commentator Richard Crowson, and Assistant News Director Carla Eckels in winning this recognition for Wichita Public Radio. The winning projects were on topics such as tobacco in Kansas, a defaced Hispanic mural, a local suicide bombing attempt, and more.

Beyond winning awards and producing excellent local news and information, Wichita Public Radio has sent staff to several national conferences. This enables them to keep up on innovative ideas, learn new skills, and build upon the abilities that have enabled KMUW to serve you better each year.



Local artist Armando Minjarez points to a defaced mural at the corner of 21st and Park Place. Photo and story by Carla Eckels.



Bottom right: Aileen LeBlanc leads a live, civil discussion with Julie Burkhart, executive director of South Wind Women's Center, and Dr. Scott Stringfield, medical director and board chair for Choices Medical Clinic.

2014 KAB Awards

First Place

Special Program

Crossing the Cedar Fence
Aileen LeBlanc & Staff

First Place

Public Affairs Program

*Q&A: The Affordable
Care Act in Kansas*
Aileen LeBlanc & Staff

First Place

News Feature

*An Unbalance
Between Primary
Doctors and Specialists*
Aileen LeBlanc

Second Place

Spot News

*Spray-Painted Racial
Epithets Deface
Hispanic Mural*
Carla Eckels

Second Place

News Feature

*Tobacco and Kansas, a
\$1 Billion Relationship*
Sean Sandefur

Second Place

Editorial/Commentary

*Football...Really...
Football?*
Richard Crowson

Honorable Mention

Spot News

*Terry Lee Loewen
Charged with Suicide
Bombing Attempt*
Aileen LeBlanc &
Hugo Phan

Honorable Mention

Station Promotion
Music Programming
Promo
Fletcher Powell

News of Note Selected News Stories of 2014



Ron Baker at the end of the Wichita State Men's Basketball team's 2014 season, by Sean Sandefur.



The current elephant exhibit at the Sedgwick County Zoo, by Deborah Shaar.



Memorial flags and yellow roses marking the spot of 1970 WSU plane crash, by Abigail Wilson

Aileen LeBlanc, News Director

- *Carr Brothers 'Night of Horror'*
- *Mike Wood, KMUW Interim General Manager Retires - Again - Maybe*

Carla Eckels, Assistant News Director

- *Seniors with Alzheimer's Benefit from iPod Therapy*
- *Larry Hatteberg: 51 Years on Both Sides of the Camera*

Sean Sandefur, News Reporter

- *Shocker Highlights: An Undefeated Season*
- *The Food Deserts of Wichita*

Deborah Shaar, News Reporter

- *Construction Starts on New Elephant Exhibit*
- *Jay Docs Marks 10 Years with Guadalupe Clinic*

Abigail Wilson, News Reporter

- *Climbing to the Crash Site: A Survivor Remembers the WSU Crash of 1970*
- *Tanganyika Wildlife Park - Increasing Populations of Endangered Species*

News That Makes An Impact

KMUW tells the story of Wichita to Wichita and the world. Assistant News Director Carla Eckels proves this point with a piece that aired on Veterans Day.

Eckels tells the story of Shalom Homes, a shelter for homeless veterans co-founded by Donna Chandler. The very next day after the story aired, a man called Donna to donate a home to her cause. Eckels learned of this generous response to her story at a silent auction benefit for Shalom House.

This was an unexpected boon for Chandler, who plans to add more houses to Shalom Homes. Shalom, which means peace, speaks to Chandler's efforts – she wants the vets to feel at peace in their homes.



Former Shalom Homes resident, veteran Orlando Ross.



Above: Interim GM Mike Wood takes a selfie with 'Strange Currency' host Jedd Beaudoin.



Spring 2014 Campaign Changing Times

A time of transition at the station saw a wonderful – if temporary – leader at KMUW. Our interim GM, Mike Wood, was the former Media Resources Center director at WSU. He returned to the university to lead KMUW as it searched for a replacement to Mark McCain, who retired near the end of 2013.

Before the on-air drive began, we encouraged listeners to Pledge it Forward, asking them to name their other favorite nonprofit for an on-air message, and invited our listeners to become KMUW Heroes. With Mike at the helm, KMUW nearly met the goal of \$325,000 after two 'bonus' days. Listeners donated the remaining dollars in the week following and we were able to carry on providing you the programming you know and love for another six months.

Left: KMUW member Christina Gregory proudly displays her Spring 2014 mug, featuring the artwork of Kate Pepper.

Fall 2014 Campaign History in the Making

Our most successful pledge drive in station history came on the heels of the arrival of KMUW's new general manager. Debra Fraser brought a wealth of new ideas and Texan energy to Wichita, introducing the KMUW Keeper program and other incentives for listener donations. 570 people responded by becoming ongoing monthly supporters (Keepers), and 476 people pledged \$20 or more a month to take advantage of a one-time offer to join the Coffee Club. With a punch card from the station, KMUW Coffee Club members are getting a pound of Spice Merchant coffee each month for a year!

The station also partnered with Whole Foods Market for a successful pre-drive mailing campaign, which extended to the first day of the drive, and with Backwoods to do a contest. We even ended on time after a stellar ten days that pulled in more than \$338,000 (surpassing our goal by \$38,000) in support from wonderful listeners like you. Thank you so much for taking part in this historic campaign!



GM Debra Fraser joins David Bisek of Whole Foods Market in the studio.



KMUW staffers Kate Clause, Heather Eden and Dalton Black model the Fall 2014 t-shirts featuring the artwork of Janice Thacker.

Sharing the Love Your Support Comes Full Circle



The KMUW Street Team is a group of strong individuals who help the station in a number of ways. They assist with media sponsorship events, help answer phones during the pledge drive and work on special projects. The athletic bunch of the group have also been on the move, participating in a number of runs, walks, races and rides in the area.

The runners, bikers and walkers of the Street Team have been hitting the pavement hard this year. They've not only been active in Wichita but also in Hesston, Augusta and Pratt, clocking over 500 combined miles so far. With their iPods, sunglasses, stocking caps, sneakers (or lack of sneakers in the case of Zack Gingrich-Gaylord), these athletes continue to proudly wear their KMUW shirts while winning a few medals along the way.

Top left: Members of the KMUW Street Team pose for a group photo before the Ballet Wichita 5K Art Run.



2014 Street Team Events:

Leprechaun Chase
Presidents Run
Rainbows Glow Run
Prairie Fire Spring Half
Marathon & 5K
Fight for Air Stairclimb and 5K
Ballet Wichita 5K Art Run
Kindness Moves Me 5K
Bike MS: Wichita Ride
Race for Freedom 5K
Prairie Fire Fall Marathon

Left: Street team member Jennifer Coffey is ready for the Rainbows Glow Run.

Media Sponsorships

KMUW partnered with the following nonprofit organizations in 2014 to promote their work and ours:

American Lung Association
Arthritis Foundation
Arts on Broadway
Association of Fundraising Professionals
Ballet Wichita
Bartlett Arboretum Treehouse Concert Series
Botanica
Chamber Music at the Barn
Creative Rush
Dyck Arboretum of the Plains
Ember Hope
Emporia State University
Exploration Place
Fairmont Neighborhood Association

Friends University
Greater Wichita Area Sports Commission
Hutchinson Fox Theatre
ICT SOS
Joyful Noise Music Camp
KETCH
Kidzcope
Museum of World Treasures
Music Theatre Wichita
National MS Society
Newton Fox Theatre
Opera Kansas
Rainbows United, Inc.
Scottish Rite
Stiefel Theatre

Tallgrass Film Association
The Forum Theatre
The Orpheum Theatre
Wichita Blues Society
Wichita Community Theatre
Wichita Festivals
Wichita Grand Opera
Wichita Jazz Festival
Wichita Symphony Orchestra
WSU Campus Recreation
WSU Center for Entrepreneurship
WSU Fine Arts
WSU School of Performing Arts
WSU Shift Space Gallery
WSU Ulrich Museum of Art
Young Professionals of Wichita

Hayes Through the Haze

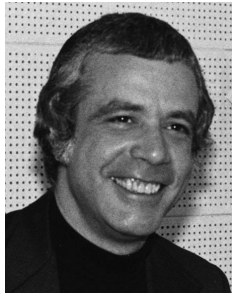
A KMUW Retrospective by Pat Hayes

Many KMUW milestones have come and gone since the beginning of Wichita Public Radio on April 26, 1949. This summer you helped us celebrate the station's 65th Birthday at our 7th Fill Your Mug event at the Eaton Venue.

After some prodding from my colleagues, they got me remembering KMUW's 30th Diamond Jubilee birthday in April of 1979. Our six-member staff, along with our student staff, and many listeners celebrated the day at Towne East Square on the elevated stage they had at that time in the very center of the relatively new mall. Some of our programming originated from the stage, but most emanated from the KMUW studios back at WSU at 17th and Fairmount.



A picture was snapped of the cake celebrating 30 years of KMUW.



Pat Hayes, left, and her husband Lance Hayes, right, at the beginning of her KMUW career.

In those days, most of KMUW's programming was locally produced. NPR certainly did not have the large selection of offerings they now have. *All Things Considered* was carried on KMUW, Monday through Friday. *Morning Edition* was still two years away.

We invited John Stevenson, host of Parkway Productions *Matinee*, to come and produce his show live from the stage at Towne East. This was before the days of the Satellite. *Matinee* was a two-hour classical show that we purchased and received the tapes on 10-inch reels each week and then had to mail them on to the next station. It was the age of "bicycling" programming tapes.

John Stevenson's fans turned out to greet him and to enjoy the performance of the Monet Trio. During the day we were joined by 90 Rose Hill second graders on a field trip. In the evening, music was provided by the Continental Ambassadors Drum and Bugle Corps and the WSU Jazz Quintet. And, Pee Wee the clown added a necessary touch to any celebration . . . balloons!

Concluding and highlighting the day was a party hosted by the WSU Alumni Association. Approximately 200 listeners enjoyed good food and drink and sang "Happy Birthday" to KMUW. Thus, ended the first 30 years of KMUW.

The next 35 years greatly changed the sound and look of KMUW. We became a full-power station in 1987. Today we are a 24/7 station whose signal reaches beyond a 60-mile radius. Our news department produces prize-winning local news and expanded features, and our music hosts produce local music programming which is picked up and played across the U.S.



Pat and Lance posing together at the Maltese Falcon Music Tasting in November of 2014.

7th Annual Fill Your Mug KMUW Turns 65

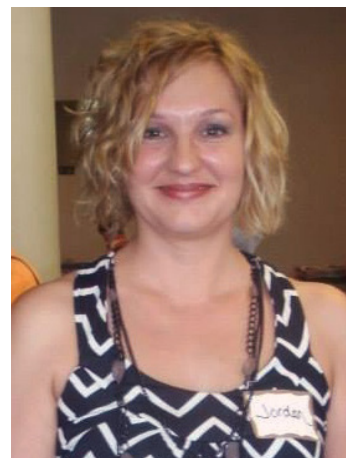
Our seventh summer listener appreciation event was a blast! We celebrated at Eaton Venue with gelato from Caffè Moderne and birthday cake from Wichita Cake Creations. It was an especially significant event too, since we also marked our 65th birthday in 2014 as well. More than 300 people joined us in the beautiful event space and got to meet staff members as well as our brand new general manager, Debra Fraser, who came on board mere weeks prior to the station's annual Final Friday event. There was music from Elliot Road as well as the rainbow of cupcakes and other treats, and we were able to thank many donors like you in person for their support of KMUW.



Jordan Hegler #KMUWhero

Four years ago, Jordan Hegler sold her dance studio in Kingman and moved her family back to Wichita. She returned to school full-time at Wichita State, where she studies biology and psychology. While she's a student, Jordan finds volunteering to be the best way to give back to the causes she supports.

"I'm a chronic volunteer-er," she says. Jordan started listening to NPR at a young age, and KMUW continues to play on her radio daily. Kai Ryssdal on *Marketplace* accompanies her on her drive home, and she even tries to plan her classes around *The Diane Rehm Show*.



KMUW.org led Jordan to our Street Team, and she has now been volunteering for us for three years. Jordan says she has especially enjoyed volunteering at KMUW events like the Maltese Falcon Music Tasting, and hosting the media sponsorship table at Music Theatre Wichita's summer shows.

"People come up to me and say, 'Hey! You're the KMUW girl!'" It cracks me up, but it's a title I'm proud to have." Thank you, Jordan, for helping keep KMUW strong.

Nathan B. Stubblefield Society

KMUW's Student Group

Membership

The Stubblefield Society, KMUW's student group, wrapped up its second year in August with nearly 300 members. That's almost double the number from the first year. Big things are already happening in our third year, as the fall semester comes to a close.



Student Intern and Stubblefield Treasurer Shannon Glover signs new members up at WSU's Welcomefest.

Welcomefest

Stubblefield has partnered with the Ulrich Museum of Art for Welcomefest at Wichita State University. For just an 89 cent membership pledge, students receive a "starter kit" full of coupons, KMUW swag and station information. They also get a membership card that allows one free admission to nine area museums. And finally, members receive a monthly email full of information about events, KMUW content, volunteer opportunities and free ticket giveaways.

The Amusing Race

The Ulrich also teamed up with the group for the first-ever Amusing Race. Much like the popular show *The Amazing Race*, students and WSU staff solved riddles, visited landmarks around campus and raced to the finish line for prizes and pizza.



The winning team crosses the finish line at The Amusing Race.

Registered Student Organization

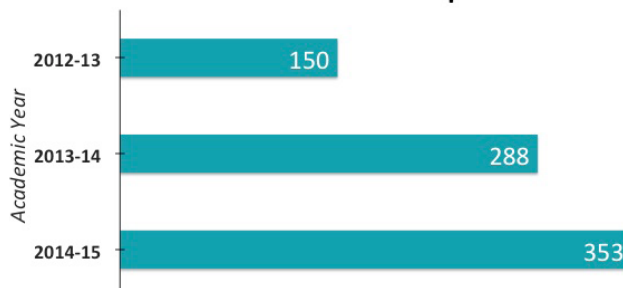
As the Stubblefield Society continues to grow, becoming a Recognized Student Organization is our main goal. The process has begun and approval from the WSU Student Government Association is the final step. Executive board members are in place and the team is already having regular monthly meetings. Empowered by these stellar students, we are planning more outreach events, like a series of Museum Hops and the second annual Amusing Race.



The Stubblefield Society Executive Board:

- Alec Willford – Vice President, WSU sophomore
- Lauren Collins – Secretary, WSU freshman
- Shannon Glover – Treasurer, WSU senior
- Diana Wensley – President, WSU graduate student

Stubblefield Membership Growth



Math + Music Tasting

January 30, 2014

What do you get when you cross a lesson in mathematics with a jazz session featuring three local musicians? The answer: a KMWU Music Tasting of epic proportions. Partnering with Exploration Place, Wichita Public Radio listeners gathered at the museum and learned about complex mathematical concepts by listening to a mix of incredible music and discussion. Union Rescue Mission, a trio comprised of Beau Jarvis, Jason Stidham, and Randy Zellers performed original jazz compositions, and Beau used the music to enlighten museum goers to concepts like harmonic series, chord progressions, rhythm, and abstractions. The event sold out, and with partners like Xclusive Events and Anna Murdoc's Café, the evening was as delicious as it was entertaining.



KMWU Host/Producer Jedd Beaudoin and local musician Beau Jarvis share some math and music with the audience.



KMWU members Debra McArthur, Mary Singleton and Robert Adams.

Maltese Falcon Music Tasting

November 6, 2014

We capped off 2014 with a Music Tasting unlike any preceding it. This one featured *The Maltese Falcon*, in association with the Big Read Wichita. Three speakers discussed different aspects relating to the story. Dr. Robin Henry of WSU spoke on the book, hard-boiled detectives and noir in literature, followed by Nick Pope of Tallgrass Film Association, who discussed the falcon films and noir in cinema. Lastly, Dr. Geoff Deibel of WSU and the Wichita Jazz Festival presented on the music of the films and the music of the times. The Candela at The LUX played host to our event, and with food catered by Larkspur Bistro & Bar, and falcon-shaped chocolates from Cero's Candies, the event was a smash. There was a little worry, when KMWU's Maltese Falcon statuette was stolen...but audience members played the private eye, and we were able to recover our priceless work of art.



Left: Superstar KMWU volunteer Marlene Ryan lends a hand in style.



Center: A group of KMWU staffers model their 1930's inspired garb.



Right: Tallgrass Film Association staff members Thane Chastain, Nick Pope, Lela Meadow-Conner & Shan Jabara pose in the Lamphouse photo booth.

KMUW Member Leadership

KMUW gratefully acknowledges the generosity of these individuals, businesses, and foundations for their generous gifts in support of current operations and special projects from January 1, 2014 through December 31, 2014.

Tesla Society Members: annual gifts exceeding \$1,000

Ann & Thomas Adrian	Anthony Giardina & Karen Van Embden	Dr. Todd & M Laura Murphy
Julie & Seth Anderson	The Oxford Grand	Amber Norris & Matthew Flesher
Dr. John Parks & Advanced Pain Medicine Associates	Walter & Linda Grether	Sarah Ottaway
Carol Bacon & William Schantz	Marilyn & David Grisham	Rachael Pirner & Dave Grant
Kay Bartel	Lizanne & Gil Guthrie	Dr. Gary & Jo Ann Pottorff
Steve Bohan	Judy & Larry M Hatteberg	Gary Proctor
Patrick Boyarski & Betsy Morrison	Nancy & Clinton Hinman	Dr. Lucynda Raben
Mary Boyce & Mary Desch	Curtis Gridley & Tracy Hoover	Jan & Steven Randle
Meribeth & Dr. Bruce Buhr	Drs. Martha & Daniel Housholder	Suryakumar & Ann Reddy
Kansas Action For Children	Nathan Esau & Tswelying Huang	Karen & Curtis Rink
Barbara Coats	Denise & Rex Irwin	Barbara & David Rolph
William Cohen Jr	Mary Liz Jameson & Leland Russell	Gary & Ginger Ruedebusch
Bruce & Patty Cole	Peter & Kay & Janssen	John Schmidt & Jean Wollmann
Lynda & Harold L Connell	Margaret Kline	Randall Schrag
Dr. Jed & Paula Delmore	Drs. Laura & Philip Knight	M Cathy & J Peter Schrepferman
Scott Dimick	Kathryn Langrehr	Marcia Scurfield
Jill & Thomas Docking	Lawrence Lee	John Severe
Jean & Charles Eby	Laurie & Tom Lewis	Eric Sexton & Kathleen Bradshaw Sexton
Dennis & Claudia Ellerman	Cheryl & Richard Lewis	Staci & Brian Sheern
Lewis Enns	Nancy & William Lusk	Christen Skaer & Luke Carter
Chris Farha	Randy & Kathy Malcom	Richard Smith Revocable Trust
Dr. Alan & Sharon Fearey	Drs. Lisa & Jeffrey May	Drs. David & Natalie Sollo
Laura Fent & Stephen Brave	Debra McArthur & Mary Singleton	Donald & Lynn E Stephan
Timothy Finnerty & Robert Adams	Dr. Nancy McCarthy-Snyder & James Snyder	Keith & Georgia Stevens
Gloria Farha Flentje & Jack Focht	Thomas & Billie McDavitt	Tony & Pat Vizzini
Drs. Steven Fogarty & Dana Swenson	James & Penelope McDonald	Father Thomas Wilson & Dr. Ruth Weber
Anna & Larry Fralick	Jane McHugh	Donna Yoder
Kathryn & H Jess Frieze	Mark Miller	Virginia Youse
The Annie Foundation	Dr. Christopher Moeller	Jim & Linda Zaudke
Jean & Dr. Philip Gaunt		Mary & CDR Roger Zwemke

Current Lifetime Members: 25 years or more of giving

Elaine Doll Aaron	Dr. Hewitt & Judy Goodpasture	Kaye & Walter Myers
Richard Abbott & Terry Hardman	Charles Graber	Kent & Sharon Olmstead
Dr. Phillip Allen	Marilyn & David Grisham	Lila Osborne
Bruce Bales	Susan & Robert Guenthner	Sarah Ottaway
Lana & Larry Bennett	Mary Harren	Diana Palenz & Dr. John Palenz
Marijean Berg	Joyce & Darrel Hart	Linda & Dr. Tim Paul
Dr. William Bischoff	Marlene & William Hayes	Kathleen & Thomas Pott
Susan & Gray Bishop	Elizabeth Hicks	Dr. Gary & Jo Ann Pottorff
Dr. William & Mary Braun III	Raleigh & Rhandalee Hinman	Drs. Diane & Bruce Quantic
Peggy Browning	Nancy & Clinton Hinman	Jan & Steven Randle
Lynn Burklund	Ellen Holmes	Howard & Barbara Redburn
Arthur Busch & Joanne Lofland	Doretha & Clarence Horn	Karen & Curtis Rink
Joan Caldwell	Drs. Martha & Daniel Housholder	Barbara & Glen Roths
Cynthia & Richard Carl	Wallace & Debora Jensen	John & Karol Schlicher
Nancy & Barry Carroll	Max Johnston	Philip Schroeder
Carolyn & Glen Chambers	Sally & Rodd Jones	Sean Seamster
David Clark	Walter & Mary Ann Jost	Mary Sheldon & James Sheldon
Barbara Coats	H Joan & Melvin Kahn	Robert & Pearl Simison
Charles Colby	Janet & Roger Kaufman	Margot Skinner
Jack Cooper	J Andrew Kenyon, Jr.	Elvera & Donald Skokan
Dr. David & Lois Crane	Drs. Laura & Philip Knight	Mary-Dell & Daniel Smith
Mary & William Cummings	Nancy & Ted Knopp	James Snyder & Dr. Nancy McCarthy Snyder
Jenny & John Davis	Donald Koke	Ann & Stephen Starch
Jill & Thomas Docking	Alys & Joe Kowing	Lee & Ronald Starkel
Roger Douthett	Christine & J Fred Kubik	Linda & Dee Starkey
Charlene & David Evans	Lawing & Gorney, Llc	Keith & Georgia Stevens
Sara & James Farley	Pat & Leroy Lehman	Bill & Fay Terrell
Dr. Alan & Sharon Fearey	Jane & James Lewis	Greg & Julie Thompson
Timothy Finnerty & Robert Adams	Shirley & David Longfellow	Joann & Bradley Tuzicka
Sandy & Elly Fitzig	Nancy & William Lusk	Ann & Martin Ufford
Gloria Farha Flentje & Jack Focht	Susan & Keith Martin	Charlene & John Van Walleghen
Charlotte & Sterling Friedman	Thomas & Billie McDavitt	Calvin & Nancy Wiebe
Larry Friend	Rose & Paul Meals	Norma & Marshall Williams
Kathryn & H Jess Frieze	Jayne Seydell Milburn	Ilsa Wolfe
Robert Harmon &	Marilyn & Richard Milhon	Margaret & Michael Wood
Laura Fulton-Harmon	Margaret & Paul Miller	Robert Young
Mary Ann Gertsen	Susan Miner	Dr. Arthur & Linda Youngman
	Jean Mulford	
	Patricia & Ronald Myers	

Marconi Society: Businesses that underwrite KMWU at a significant level

These businesses have provided monetary support and/or traded goods, services, time and talents with KMWU. Please support the businesses that support KMWU.

Davis-Moore Auto Group

Decker Electric

Eddy's Toyota

Kansas Medical Center

McClelland Sound

Morris Laing Evans Brock &
Kennedy Chtd

Presbyterian Manors of

Mid-America

Volunteer Kansas Inc

Society of 1949: Annual gifts of \$400 to \$999

Stan & Gretchen Lee Andeel

Nancy Ruth Anderson

Anna Anderson & Christopher Shank

Emily Andy & Sadie Boyd

Sue Anne & Martin Eddy

Mickey Armstrong

Janet Baird

Shelli Baker

Dr. John and Deborah Bardo

Roy & Pat Beckemeyer

Robert Blackburn

Patrick Blackwell

Vera & James Bothner

Clark & Carla Sue Boyer

Dr. William & Mary Susan Braun III

Margot Breckbill

Peggy Browning

Dr. Elisha Brumfield

Jeanne & Charles Burdsal

Arthur Busch & Joanne Lofland

Joan Caldwell

Stephen Chadick

Leanne & Tom Chase

Philippe Ciholas

David Clark

Jeffrey & Cindy Clark

Mary Cole

Diana & Tim Collins

Nancy & Dr. Charles Craig

Jackie & Bernie Cummins

Kevin Lindsey & Barbara Decker-

Lindsey

Margi Young

Holly Dyer & Gary Owens

Ann & Roger Eastwood

Ann Egelhof

Lisa Elliott

Susan Ellis

Joe & Rickilene Emery

J Eric Engstrom

Susan George & Bryan Patten

Richard & Joanne Giblin

Sarah Gilbert

Barbara Gingrich

Charles Graber

Jennifer Graham-Rateliffand & Joseph

Rateliff

Christina Gregory

Lawrence Gurney & Annette Gurney

Lisa Gustin

Kimberly & Douglas Hague

Carolyn & Dr. Paul Harrison

Drs. Rhea Hartley & Matthew Reed

Susan & Larry Harvey

Dr. Anne Harvey

Marlene & William Hayes

Father Kent Hemberger

Robin Henry

Linda Hickok

Patricia Higgins

Steven & Annabeth Hind

Raleigh & Rhandalee Hinman

Kellie Erin Hogan

Ellen Holmes

Dr. Marlene Mendiones Howell

Wen & Ming Hsiao

Barbara & William Hubert

David & Allison Hughes

Ann Elizabeth Hughes

John Hunt

Charles & Lynne Hunter

Kathy Jackson

William Jenkins

Scott & Ann Jensen

Sally & Rodd Jones

Wade & Suzanne Jones

Jennifer & Bill Kassebaum

Nizar Kibar

Steven & Sally Kimball

Edwina & Bennie Kinchion Jr

Lou Alice King

Sally & Thomas Kitch

Diane & Rick Klingman

Tom & Grace Kneil

Barbara Koelsch

Michael Kraus

Dean & Anne Kuckelman

Judy Langley

Marie Lies

Stephen & Nicolette Llamas

Kim Lockwood & Clinton Stucky

Lori & Thomas Lohrenz

Betty Lovett

William & Sabra Ludlum

Jean & Arturo Macias

James & Bev Manuszak

Mike Marion

Joyce Markley

Tom Marten

Barbara & Keith Martin

Mary Lou & Carl Martin

Kenneth Martindale

Greg & Suzanne Matthias

Dr. John & Karen McCabe-Juhnke

Ricky McClure-Burgen

Samuel & Allison McConnell

Fawn Aline & Dr. W. David Mc-

Donough

Sharon O'Neill & William McKeighan

Eloise Melton & John Philbrick

Andrew & Jamie Mies

Jayne Seydell Milburn

Harvey Miller & Carol Harness

Nancy Milner

Richard & Barbara Mohnery

Kevin & Kathleen Monroe

Karen & Marc Morrison

Jane & Dr Barry Murphy
 Ellan & Samuel Muyskens
 Edward Myers
 Patricia & Ronald Myers
 Judith Nicely
 Greta & Raymond P O'Brien
 Dr. Margaret & Joseph O'Hara
 Karen O'Loughlin
 Scott & Carole Ochs
 Mary Lynn & William Oliver Jr
 Kent & Sharon Olmstead
 Richard & Pamela Pancake
 Jean Patterson
 Michael & Lora Patton
 Steven & Pamela Persons
 John Peterson
 Patricia Petrakis
 Arin Petrask
 Dr and Mrs Neal Pfeiffer
 Laurie Pivonka
 Kathleen & Thomas Pott
 David & Dr. Patricia Powell
 Bahram Rahbar & M Bonnie Ernst
 Geney Reed
 Ashley Robbins & Sam Antonios
 Bryan & Stephanie Sanders
 Rudolf & Doris Sauerwein
 Kerin Schell & B Susan Dougherty
 Elaine Schmidt
 Melinda & Lee Schnyder
 Susan Oruth Scholl
 Philip Schroeder
 Ladonna & Theodore Schupp
 Patsy Sue & Bob Scott
 Sean Seamster
 Joseph Hlavacek & Kathleen Shana-
 han
 Kathleen Shea
 Dr. James Smith & Kim Merrifield
 Smith
 John Campbell & Dr. Betty Smith-
 Campbell
 Lee & Ronald Starkel
 Wayne & Diane Steadham
 Shawn & Heather Stewart
 Kathryn Thiessen
 Stephanie & Donald Thompson
 Greg & Julie Thompson

Bonnie Till
 Randall Treece
 Rebecca Tucker
 Tobias & Megan Tyner
 Paul & Marla Ullom-Minnich
 Kenneth Utz
 Paula Van Andel
 Dr. Jacqueline & Raymond Vietti
 Dr. Kyle Vincent
 Joan Wagner
 Leslie Ward & R Maimon Ward Jr
 Thomas Welk
 Elizabeth Weyman & Danny White
 Iris White

Steven Bates & Penny White
 Margaret & Richard Wieland
 Annie & Richard Wilson
 Margaret & Michael Wood
 Narnie & James Woolley
 Robin & Harlan Wright
 Dr. Patricia Wyatt-Harris &
 Dr. James Harris
 Rebecca & Dalvin Yager
 Joni & Alex Young
 Robert Young
 John & Sherry Young
 Tom Zickuhr
 Melanie Zuercher

KMUW Staff

Debra Fraser, General Manager
 Julie Brin, Assistant to the General Manager
 Jon Cyphers, Director of Engineering
 Aileen LeBlanc, News Director
 Lu Anne Stephens, Director of Content
 Pat Hayes, Membership Director
 Sarah Jane Crespo, Engagement Marketing Director

Content:

Jedd Beaudoin, *Strange Currency* Host/Producer
 Kate Clause, *Morning Edition* Host/Producer
 Carla Eckels, Assistant News Director & *Soulsations* Host/Producer
 Heather Eden, Operations Assistant & Announcer
 Beth Golay, Digital Content Marketing Manager
 Chris Heim, *Global Village*, *Night Train* & *Crossroads* Host/Producer
 Bill Pearce, *Straight No Chaser* Host
 Hugo Phan, Digital Assistant
 Fletcher Powell, Production Manager & *All Things Considered* Host
 Sean Sandefur, News Reporter
 Deborah Shaar, News Reporter
 Abigail Wilson, News Reporter

Development:

Larry Bennett, Community Business Advancement
 Dalton Black, Engagement Assistant & Announcer
 Zack Gingrich-Gaylord, Community Business Advancement
 Shannon Glover, Engagement Intern
 Denise Irwin, Marketing Coordinator
 Jordan Kirtley, Engagement Assistant

Volunteer Commentators:

Sarah Bagby, Books	Lindsey Herkommer DeVries, Art
Richard Crowson, Editorial	Samuel McConnell, Games
Jim Erickson, Film	Sanda Moore Coleman, Theater
Lael Ewy, Language	Dr. Jay Price, History
Mark Foley, Music	Tanya Tandoc, Food
Dr. Robin Henry, History	Dr. Robert E Weems Jr, History

Business Underwriters of 2014

These businesses have provided monetary support and/or traded goods, services, time and talents with KMUW. Please support the businesses that support KMUW.

Abode Venue	Commonfolk	Great Plains Woodcarvers
Adrian & Pankratz, P.A.	Compass Star Montessori	Greater Wichita Area Sports Commission
Advanced Pain Medicine Associates	Congregation Emanu-El	Green Biz Wichita
Advantage Home Inspections	Consolidated Holdings	Greteman Group
Aero Metal Forms Inc.	Cowley College	Habitat Media
Association of Fundraising Professionals	Cox Communications	Harry Hynes Memorial Hospice
AFS Intercultural Programs	CybertronPC	Hartman Arena
Alternative Gifts International	Cypress Heart	Hawks Interstate Pestmasters
Anna Murdoc's	Davis-Moore Auto Group	Heads Shoes
Aroundcampus Group	Doubletree by Hilton	Health and Wellness Coalition of Wichita
Arts Council	Douglas Photographic Imaging	Heartland Friends
Arts On Broadway	Dr. Kumar Reddy	Heartland Pathology
Arts Partners	DT's Outlet	Heartland Technology Solutions
Artworks	Dyck Arboretum of the Plains	Henry Helgersen Company
Aspen Boutique	Eddy's Toyota	Henry's House of Jazz
Auto Shop Do-It-Yourself	Ember Hope	Hereditary Neurological Disease Centre
Bad Bean Production	Empire Catering	Hesston College
Ballet Wichita	Emporia State University	Hillside Nursery
Barney Byard Promotions	Envision Inc	Home-Maid, Inc.
Bartlett Arboretum	Episcopal Social Services	Hunter Health Clinic
Beaver Productions	Espresso To Go Go	Hutchinson Fox Theatre
Bicycle Pedaler/Holliday Enterprises Inc	Et Cetera Shop	ICT S.O.S.
Bohemia Healing Spa	Exploration Place	In The Yard Productions
Botanica	F5	Inter-Faith Ministries
Campus Publishers	Farha Construction	Intrust Bank Arena
Castle Advertising	Fiat of Wichita	Intrust Bank of Wichita
Carriage Factory Art Gallery	First Presbyterian Church	Jade Presents, LLC
Center for Economic Development & Business Research	First Unitarian Universalist Church	Joyful Noise Camp
Central Care Cancer Center	Fisch Haus	Junior League of Wichita Inc
Cero's Candy	Fleeson Gooing Coulson & Kitch	Kansas African American Museum
Chamber Music At The Barn	Friends of the Wichita Public Library	Kansas Association Of Community Foundations
Chautauqua Hills Festivals	Friends University	Kansas Aviation Museum
Cherokee Maidens	Friends University Fine Arts	Kansas Credit Union Association
Child Start	Friends University Garvey Institute of Law	Kansas DUI Impact Center
Cirus Water	Galaxie Business Equipment Inc	Kansas Leadership Center
City of Wichita, Arts & Cultural Services	Gathering In The Grove	Kansas Medical Center
College Hill United Methodist Church	Grace Hill Winery	Kansas Mennonite Men's Chorus
	Grand Chapel	Kansas Mennonite Relief Sale
	Great Plains Nature Center	
	Great Plains United Methodist	

Kansas Surgery & Recovery Center	Pat Washburn Prudential Dinning-Beard Realtors	Trust Company of Kansas
Kansas Surgical Arts	Peace Treaty Association	Ulrich Museum of Art
Kansas University Endowment Association	Picassos Pizzeria	United Way of the Plains
KETCH	Piccadilly Square	University Congregational Church
Kidz Cope	Pixel Time	University Friends Church
King's Solar, Wind & Plumbing	Planet Hair	University Relations
KU School of Business	Plymouth Congregational Church	Urban Sounds
KU School of Medicine	Positive Directions, Inc.	Via Christi Villages, Inc.
Lamphouse Photo Co	Prairie Fire	Volunteer Kansas, Inc.
Larksfield Place	Prairie Harvest LLC	Watermark Books & Cafe
Larkspur Bistro & Bar	Procure	West Heights United Methodist Church
Latour Management, Inc	Public at the Brickyard	Wheat State Wine Co
Lawrence Photo, Inc	Raben Dentistry	Wichita Art Museum
Lincoln Heights Village	Rainbow's United	Wichita Blues Society
LivingSound	Reverie Coffee Roasters	Wichita Brewing Company
Lorraine Avenue Mennonite Church	Richard Overby of Weigand Realtors	Wichita Cake Creations
Lucinda's	Roxy's Downtown	Wichita Center For The Arts
Lyndon's	Shift Space Gallery	Wichita Chamber Chorale
Margaret McHenry Maids	Simon & Schuster, Inc	Wichita Community Theater
McPherson Opera House	Skaer Veterinary Clini	Wichita Festivals, Inc.
McPherson Scottish Festival	Skeletons Out Of The Closet	Wichita Grand Opera
Meals On Wheels Association of Kansas	Southwestern College	Wichita Independent Business Association
Moeller Dermatology	Star Lumber & Supply	Wichita Jazz Festival
Monart School of the Arts	Stiefel Theatre	Wichita Montessori School
Monica's Bundt Cake Co.	Stinson Leonard Street	Wichita Public Library
Morris Laing Evans Brock & Kennedy Chtd	Stor-All	Wichita Rowing Association
Museum of World Treasures	Stoutheart Financial Group	Wichita Scottish Rite Signature Theater
Music Theatre Wichita	Suede	Wichita-Sedgwick County Historical Museum
National MS Society South Central Kansas	Sunflower Community Action	Wichita-Sedgwick County Metro Area Planning Dept
Naymlis Entertainment	Symphony in the Flint Hills	Wichita Symphony Society
Nelson-Atkins Museum of Art	Tallgrass Film Festival	William Inge Center for the Arts
New Horizons Computer Learning Center	Tanya's Soup Kitchen	Womens Focus Magazine
Newman University	Ten Thousand Villages - Newton	WSU Alumni Association
Newman University Milton Center	The Arthritis Foundation	WSU Career Services
Newton Arts Commission	The Cotillion Ballroom	WSU Center for Entrepreneurship
Newton Fox Performing Arts Center, Inc	The Forum Theatre	WSU College of Fine Arts
Newton Medical Center	The Hand Center	WSU Fairmount College of Liberal Arts & Sciences
Northfield School	The Independent School Inc	WSU School of Business
Old Cowtown Museum	The Monarch	WSU Student Activities Council
Opera Kansas	The Orpheum Theatre	WSU Summer Theatre Program
Oxford Holdings	The Shamrock Lounge	WSU University Communications
Pain Management Associates	The Spice Merchant	Xclusive Events
	The Sunflower	
	Theater League	
	Traditions Home	

KMUW Members & Supporters of 2014

KMUW gratefully acknowledges the generosity of these individuals for their generous gifts in support of current operations and special projects from January 1, 2014 through December 31, 2014.

Richard Abbott & Terry Hardman
Ronald & Sherrana Abderhalden
David & Katherine Abel
Craig & Stacey Ablah
Faith & Don Ablah
Paul Achenbach
Norma Ackeret
Jenny & Brian Adams
Catherine Adams
Clayton Adams
Dorothea Adams
Barbara Ann & Gilbert Addison
Laura Smiley Addison
Stephanie Aguilera
Barbara Ahne-Fowler & Jay Fowler
Joan & Gerald Aistrup
Denise Akers
Mara Alagic
Ahmed Alam
Patrick Albers
Arleigh Aldrich
Kyle Aldrich
Mary Aldridge
Priscilla & David All
Sandy Allen
Sally & Thomas Allen
Mark Allen
Monica Allen
Marcia Allen
Sarah Allender
Rachel & James Alley
Melissa Alley
Shirley & Robert Alley
Rob & Sharon Alliband
Suzanne Allison
Rhonda Almond & Shawn Nichols
James Alvey
Sean & Ava Amore
Sherrie Andersen
Marc & Anita Anderson
David Anderson
Donald & Margaret Ann Anderson
Bob & Carnella Anderson
Marietta Anderson
Margaret Anderson
J Gregory Anderson
Mark Anderson
Sue & Larry Anderson
Terry Anderson
Carl & Rosalind Andreas

Kathryn Androski
Larilla Ann & Jerry Combs
Sallie Ann & Donald Distler
Harriet Ann & David Ediger
James Wesley & Mary Ann Deskins
Joanne & Charles Applegate
Dustin & Michele Arbuckle
Conette & William Archer
Sonja Armbruster
Janet Arnet
Ken & Jan Arnold
Abigail Arthur
Kathleen Ashford
Keith Ashley
Ramona Ashraf
Jenniffer & Dan Atanassov
James & Micaela Ayers
Marcia & Ted Ayres
Gary Bachus
Alf Badgett
Sarah Bagby & Eric Cale
Pam Bailey
Jerry Bailey
Janice Bailey
Loretta Bailey
Carole Baker
Anna & Roy Baker
Rodger & Kathleen Baker
Shirley Baker
Julie Ann Baker & Les Brin
Linda & Gordon Bakken
Barath Baktha
Adam Baldwin
Bruce Bales
Susan Balman
Kathleen Barbara
Loretta Barchers
Linda Barker
J Edward & Donna Dudley Barker Jr.
Brenda Barnes
Cheryl & Terry Barnett
Fonda Barr
Lindsay Barrett
Herb & Pat Bartel
Grace & Harlan Bartel
Floyd Bartel & Justina Neufeld
Aimee Basham
Rajeeva Bashyakarla
Sharon & M Clark Bastian
Seth & Jennifer Muret Bate

Charles Baughman & Kate Pepper
Jerry & Pamela Baumann
Jeff Baumgartner
Brad Beachy & Susan Bradley
Marcia & Edwin Henry Beasley
Leanna Beat
Jedd Beaudoin
James & Moriah Beck
Robert & Donna Becker
Jacqueline Beer
Leanne Beets
Erica Behr
Jennifer Beilman
Dick Anderson & Fran Belden
Debby & Brian Belden
Martha Jeanne & Charles Belew
David Bell
Rebekah Bell
Kim & Allen Bell
Walter Bell
A Robert Below Jr.
Joanna & Ryan Bendell
Col. Jack & Donna Bender III
Thomas & Margaret McNulty
Benefiel
Lana & Larry Bennett
Mike Benscheidt
Marijean Berg
Nanette & Dietrich Bergen
Paul Berkey
Laura Bernstorf
Suzanne & Fred Berry Jr.
Kathy & Bruce Bethke
Dr. Baikunth & Sheila Bhargava
Chase Billingham
Renee Bingham
Lynne & Melvin Bird
Renee & Steve Bridwell
Dr. William Bischoff
Susan & Gray Bishop
Flora Bishop
Pam & Dennis Bishop
John Black
Linda & Ronald Black
Dennis Black
Kathryn & Steven Black
Christine Ayala-Black
Lewis Blackwell
Bailey Blair
Elizabeth Anderson & Benjamin

Blankley	Thomas & Patricia Brock	Holly Byers & Baby Quinn Rose
Eileen Blasi	Alta Brock	Michael & Ann Byington
Judy Blauer	Pauletta Brodhagen	Lori Byrd
Daryl & Cindy Jane Blick	Lynette & Raymond Brown	Jane Byrnes
Kay Blinn	Robert & Ruby Brown	James Byrum
George Scott Blume	Alison & Mitchel Brown	Nancy Cadwell
Jennifer & Matthew Blundon	Nola Brown	Thomas Caldarera
Therese & Sonny Blyn	Samantha Brown	Joean Calhoun
Jeffrey Boddiger	Jack & Dana Brown	Sylvia & Gregory Call
M Sue & Robert Boewe	Barbara Brown	Mark Barfield & Tracy Callard
Jo Bogan-Johnson	Ingrid Brown	Marla Camacho
Kathryn & Doug Bogue	Christopher Brown	Cynthia & Richard Carl
Claire Bolen	Zachary Brown	Cheryl & John Carmichael
Julia Bolin	Nancy Browning	Norman & Lois Carr
Ron & Bev Bolton	Rene Brozovich	Darryl Carrington
Max Doman	Claire Brubacher	Nancy & Barry Carroll
Susan & Kevin Bomhoff	Cameron & Megan Bruce	Charlie & Mary Carson
Alisha Bond	Dr. Bruce & Billie Wells	Elizabeth Carson
Lisa Bonds	Jim Bruggeman	Dianna Carter
Connie Bonfy-Stewart &	Mandee & Trint Buchholz	Mary & David Caruso
Max Stewart	Kathryn Buck	Michael Hutton & Sheryl Caryl
Brian Bontrager	John Buckner	Janice Casey
Ben & Katherine Williams Booth	Sueanna & Chip Budde	Casey & Bret Jacob
James & Susan Boots	Rita Buffington	Mike & Paula Casey
Brad & Diane Born	Nathan & Ola Buhr	Kimberly & Derek Casey
Jeff Borton	Jennifer & Chad Bumsted	Rosie & Mark Cassell
David Bosarge	Patricia Bunton	Angela Cassette & David Hunsicker
Cynthia Bossemeyer	Carol Burch	Paul Catanese
Jill Bostwick	Ben Burdick	Diane & Carl Caton
Marc & Sarah Bosworth	Susan Burdick & Martin Burdick	Mary & John Caton
Jeffrey & Rose Boundy	Jim & Doris Burgert	Douglas Cekal
M Melyn Bounous	Yancey Burgess	South Wind Women's Center
Susan & Louis Bourlard	Leigh Carlson Burgess	Elizabeth Ceramella
Christina Bourne	John & Shari Burke	Caryl Chacey-Guba & Tom Guba
Jack & Sheila Bowling	Patricia Zoe Burke	Carolyn & Glen Chambers
Ann & Larry Bowman	Darlene Burke	Vernette Chance
Lorraine Boyd	Richard & Evelyn Burke	David Chanowski
James Boyd	Lynn Burklund	Suzanne & Michael Chapek
Robyn Boyes	Kristin Burling	Dr. Walt Chappell
Randy Bradbury	Catherine & Edward Burns	Lalanea Chastain
Jane & Gerald Bradfield	William Burress	Richard & Belinda Childs
Kent Bradley	Philip & Lori Burress	Crista Childs
Tami Bradley	Kevin & Denise Burrow	Jim Chipman
Scott Bradley	Donald Burrow	Mary Ann Chitwood
Ruth & Thomas Bradshaw	Patrick & Jennifer Burton	Leslie Church
Catherine Brady	Jerry Busch	Vicki & Dale Churchman
Cathrine & Dr. J Preston Brammer	Marwa Buser	Barbara Ciboski
Richard & Christine Brandorff	Evelyn & Thomas Bush	Maria Cienas
Kimber & Chris Breeden	Randy & Sandra Bush	Patricia Ciotti
Jill Bremyer	Kim Holmes Bush	Kendall & Carol Claassen
Sean & Chantelle Brennan	Tammi & Jason Buss	Carol Claassen
Ron Bretz	Greg & Beverly Buster	John & Miriam Claassen
Donald Dean Brewer	Diane Butler	Richard & Teresa Claiborne
Susie & James Brewer	Gretchen & Linden Butler	John Clark & Shannon Caton
Kathryn & Tom Bridges	Patrick & Beryl Butler	Toni Clark
Don & Freda Briggs	Mark Buttram	Kay Clark
Dr. Edward Holmes Brinton	Susan Buttram	James Clark

Mary & Randy Clark
Debra Clasen
Kate & Raymond Clause
Nick & Cathy Clausen
Cindy & Charlie Claycomb
Robin Salem Clements
Lyle Clifford
Susan Cline
Curt & Taeko Clonts
Dan Close
Dan & Shelley Closson
Paige Cocke
Steve & Monica Coen
Charles Colby
Carol Cole
Philip Coleman
Robert & Marie Coleman
Norma & Jerry Coles
Paul Collado
Donna & Arlin Collie
Jennifer Collins
Carla & Richard Collins
Mary Halsig
Wichita Black Chamber of
Commerce
Leah & Tony Condon
Sharon Congdon
Faith & Gioacchino Coniglio
Kay Conklin
Mike & Jean Conkling
Nadine Conner
Fred & Barbara Conner
Judith Conners
Jack Connor
Cary Conover
Mary Cook
Kimberlee Cook
Edna Cooper
Kenneth & Ruth Cooper
Theola & Gregory Cooper
Janis Cooper
James & Deann Coote
Carolyn Copple
James Corbet
Justin Corbin
Michael & Erin Corder
Christopher Cordes
Marcia Kennedy Cordes
Angela Corkill
Donald Rex Cornelius
Julie Cornett
Michelle Cortese
Nora & Kendrick Coryell
Courtney Coupland
Mark & Lindy Courington
Carol Ann & Fred Cowart
Brian & Sonia Cox

Stewart & Teresa Cox
Roy Cox
Matt Coykendall
Katherine Coykendall
Mark & Judith Cozine
Elizabeth Cozine
Nancy & George Crandall
Alicia Crane
Melvin & Doris Crane
Margaret Goger-Cranston &
Michael Cranston
Aleycia Crawford
Marian Crawford
Matthew & Natasha Creasman
Anita Creekmore
Lisa Crenshaw
Valerie Creswell & Daniel Davis
Jessica Criser
James Crisler
Roger & Ruth Crispin
Beverly & Robert Crowe
Doris Diane Cruitt
Mary Dolores Collins Crum Trust
Lacey Cruse
Dawn Cuellar
Carol & Harry Cumberland
Mary & William Cummings
Linda Cunningham & Barney Byard
Judy Curtis Naylor
Betty Curtis
Jonathan & Alissa Cyphers
Bunny Czarnopys
John D'Angelo
Bill & Libby Dakan
Eric Dalbom
John & Hazel Dalbom
Charles Dall
Joyce Daniel
Peter Daniels &
Chenoa Simmons-Daniels
William Daniels
Mary Daratt
Laura Dargitz
William & Courtney Darrah
Deborra & William Darrow
Darryl & Kara Mannebach
Kelley & Phillip Davidson
Marcelyn & Charley Davidson
Jonell E D & Boyd Davies Jr.
Elena Davila
Iris Davis
Christopher & Michelle Davis
David Davis & Stephanie Lambert
Stephen Davis
Jenny & John Davis
Rev Hewitt Davis
Nancy Davis

Ted Davis
Linda Davisson
Margaret Dawe
Steven & Teresa Day
Jane & Rich De Giacomo
Elizabeth De Leon
John & Kelley Decesaro
Steven & Mary Kay Dechant
Howard & Angela Deck
David & Rebecca Holden Deckard
Rev. John & Barbara Decker
Dan Deener
Geoffrey Deibel
Scott & Jill Deines
Gloria Deines
Amy Delamaide
Dr. Thomas Delillo
Mary & Donald Delmez
Don Demoss
Amy Denayer
Cliff & Susanna Denis
Corinne & Clifford Depew
Gordon Depledge
Thomas & Deborah Derber
Bill Deroulet
Linda & Josephine Destasio
Mark & Julie Detter
Valerie & Harry Dettwiler
Amy & Adam Devault
Darlene Dick
Daagya Dick
Dan Dickgrafe
Shirley & Denis Dieker Jr.
Bob & Nancy Diepenbrock
Kenneth Dill
Allen Dilley
Connie Dirks
Judith Dishinger
Kathryn & John Dittmer
James Dixon
Janice & David Dixon
Karen & Harry Dobbin
Thomas & Shelly Martin-Dobbins
Brian Docking &
Emily Cassell Docking
Judd Doffing
Mary Dohl
Sarah Donaldson
Julian & Ashley Donalson
Janet & Robert Donley
Dr. Leonard & Helen Donley
Mark Donnelly
Delora Donovan
Jane Dooley
William Doolin
Mike Doolittle
Ann & Curtis Dorn

Darwin & Stephanie Tilden Dorr
 William & Tamara Dorsett
 Roger Douthett
 Sonja Dove
 William & Carla Dowd
 Rachel & Michael Downs
 Rich & Sherri Doyon
 Amy Draut
 Michael & Jennifer Dromey
 Mary Druding
 Drs. Dennis & Orpha Duell
 Emily Duethman
 Sarah Dugan
 Beverly & John Dugay
 Kelly Dumler
 Mackenzie Dumont
 Anne & Timothy Duncan
 Laura Dungan & James Aaron
 Fowler
 Marvin Dunlap
 Dee Dunlap & Curt Van Boening
 Debbie Dunne
 Deborah & Anthony Dunne
 Dirk Durant
 Josh Dutcher
 Renee Duxler
 Nick Dyer
 Kelsey Easterday
 Maggi Easton
 Raymond Eaton Jr.
 Marsha Ebaugh
 Judy Ebersole
 Dr. Vance Eckstrom & Clarice Eck-
 strom
 Elaine Edens
 Lawrence Jacque Ediger
 Mary Edith & Lanny Reichert
 Christine Edmonds
 Kevin Edmundson
 Adrienne Edwards
 Kimberly Egholm
 Louis & Darlene Ehlers
 James Mason & Helen Ehlers
 Catherine Ehmke
 Marianne Eichelberger
 Dr. David Eichhorn & Judith Gordon
 Ina & Orlin Eigsti
 Daniel Eigsti
 Angie Elliott
 Eunice & Catherine Ellis
 Tim Elsen
 Lisa Emmitt
 Jenna Engels
 Nicollette Engels
 Pat & Stacy England
 Naomi England
 Kimberly Enos

Susan Ensz
 Cindy Entriiken & James Hammer
 Amanda Entz
 Dianne Epp
 Jennifer & Mark Erickson
 Linda & Tod Ernst
 Frances & Fred Ervin
 Tom & Kathie Erwin
 Jane Eshelman
 Wendy & Marvin Estes
 Mary Lou & Richard Etherington
 Casey Eubank
 Charlene & David Evans
 Carol Evans
 Deedee Evans
 Gordon Ewing
 Janice Ewing
 Lael Ewy
 Sally Fahrenthold
 Martha & Frank Fair
 William Fales
 Jim Fallis
 Stephanie Farley & Emily Behlmann
 Jeremy Entz
 Mark Farr
 Debora Farr
 Jean Farrar
 Barbara & Mick Farrell
 Jenny Fast
 Taci & Gary Fast
 Laura Fearey
 Kathy Fehrmann
 Sarah & Erwin Feiertag
 Amy Feimer
 Dr. Robert Feleppa
 Jim & Diane Felt
 Cj Felton
 Michael & Pat Felton
 James & Dolores Fernz
 Jacob Ferrell
 Elanor Ferris
 Brian & Diana Ferris
 David & Karen Fieser
 Julian Figueroa
 Marcia Findeiss
 Lisa & Kevin Findley
 Richard & Laveda Finley
 Barbara Jene Fisher & Christel Selcer
 Donna Fisher
 Janet Fisher
 Evelyn Fisher
 Sandy & Elly Fitzig
 Geraldine Flaharty
 Martha Flaherty
 Monica & David Flask
 Lisa & Judge James Fleetwood
 Dr. Edward & Marla Flentje

Terrill Florence
 Jim Flores
 Gary & Ann Flory
 Megan Fogarty & Eric Weisshaar
 Arvin Fontarum
 Jane Forkner
 Jana Forrest
 Suzanne Fortin
 Gary Foster
 Andrew Foster
 Colin Foster
 Norman & Frances Foster
 Leslie Foster
 Diane Fox
 Barbara Fox
 Melissa Fox
 Richard Frakes
 Dawn Frankfurt
 James Franko & Christine Butler
 Astrid & Jason Teschke Franz
 Laurie & Jeffrey Fraser
 Debra Fraser & Kevin Daly
 Philip Frazier
 Beatrice & Fred Frazier
 Fred & Dee Hambright
 Charli & Mike Frederick
 Bruce & Barbara Freeman
 Nathan French
 Sarah Frick
 Ludmilla & Buma Fridman
 Charlotte & Sterling Friedman
 Larry Friend
 Larry Friesen & Donna June
 Rev Donna Friesen
 James Fromme
 Jeff & Chele Behrens Fry
 Gene & Phyllis Fuhr
 Virgil & Cheryl Fulton
 Lorraine Fulton
 Robert Harmon &
 Laura Fulton-Harmon
 Galin Funk
 Sarah Funke
 Dennis & Jo Gabel
 Kenneth Gabrielson
 Mary & John Gaeddert
 Dr. Bob & Cheri Gage
 Karen Carr Gale
 David & Carol Galliard
 Tony & Tara Galyardt
 Debra & Daniel Gamache
 Jeff Gamon
 Belinda Garcia
 Joanne Gardner
 Carole Garretson
 Mary Garrett
 Kenneth Garrett

Maria & Timothy Garrouette
Scott Garvey
Jinny & John Garvey
Robert Garvey
Patricia Gateley
Toni & Walter Gates
Terry Gattis
Ron & Bonnie Gatton
John & Diane Gaunt
Dr. Charlie Gaynor &
Rebecca Armstrong
Jeff Artman & Lorraine Geer-Artman
David & Krista Gehrert
Sally Geisert
Gerald & Karen Koehn
Dan Morris &
Jennifer Gholson-Morris
Dr. Richard & Dona Gibson
Carey Gerdes
Christopher & Laurie Giggy
Karen Gilchrist
Jeff & Lisa Gile
James Giles
Hugh Gill
Christine & Preston Gilson
Kathy Gilstrap
Erin Gingrich-Gaylord &
Jesse Overright
Zachary & Micala Gingrich-Gaylord
Richard Girard
Col. Peter Giroux Usaf &
Mareyn Giroux
Diane Gjerstad
Fred Glassco
Dr. H.G. & Carol Glidden
Bob Glock
Sophie & Yves Godmaire
Charles & Sandra Goentzel
Judy Goering
Alice & Mark Goering
David Goering
Fred & Bev Goering
Ryan Goering
David Goering
Jim & Ruth Goering
Theron & Jennifer Goering
Jonathon & Betsey Goering
Joyce Goering Norris & Bill Norris
Danae Goerl
Ryan Goertzen
John Goerzen
Beth & Scott Golay
Judy Gomez
Rolando Gomez
Dr. Hewitt & Judy Goodpasture
Cindy & Donald Thad Goodrich
Thomas Goranson

Monica Gorcos
Sharon Gordon & Mike Morton
Diana & Jeff Gordon
Joseph & Ellen Gorsky
Oscar Gossard
Diane & Thomas Gossen
Andrew & Katie Gough
Gilisa Gould
Jon Gould
Elyse & Terry Gowin
Andrea Yoder & Phil Graber
Mark Graber
Arnold Graef II
Faye Graff
Lisa Graham
Carol Graham
Karen & James Graves
Cynthia Gray
Jarrett Green
Chris & Sarah Green
Cathy & Dale Green
Michael Greene
Melanie & Larry Greenwood
Richard Gregg
Gina & Jim Gregory
Harry & Sharron Gregory
Mary & Bruce Grene
William Gress
Judith Greteman
Karen Gretskey
Alisha Gridley
Carolyn & Jim Grier
Jane & Earl Griffith
Barbara Groh
Michele Groves
Susan & Robert Guenther
Carolyn Guernsey
Bradley Guhr & Sara Friesen-Guhr
Janice Guice
Christopher Gulick
William Gumma
Marilynn Gump
Alicia Gurney
Gilberto Gutierrez &
Lana Clover Gutierrez
Kathleen & George Gutowski
Susan & Dennis Hague
Zach Hague
Larry Hahn
Sharedi Haines
John Hale
Emily Hales
Rose Haley
Tim & Delaine Hall
Karen Hall
Amy & Dennis Hall
Judith Hall

Mary & Peter Halley
Dana Hamant
Darrell Hambley
Blake Hamilton
Arlen Hamilton
Doyle & Dawn Hamilton
Carol & Gary Hammel
John Hammer
Dennis Hammers
Barbara Hammond
Wade Hampton
Michael Hanawalt
Dorothy Haner
Brian & Glenna Haney
Linda Hankins
Elaine & Lloyd Hanna
Christy & Robert Hanne
Gunter Hansen
Aslam Haque
Lorna Harder
Lois Harder
Steven Hardesty
David Haring
Ian Harland
Gary & Cathy Harmon
Mary Harms
Britton Harper
Kelly Harper
Sue Harper & Theodore Ice
Cheryl Harrell
Mary Harren
Debra & David Harries
Karen Harriman
Pamela & Keith Harris
Dawn Harris
Marjean Harris
Bruce & Teri Harris
Pat Harris-Mostowitz &
Joshua Mostowitz
Timothy Harrison & Tracy Harrison
Suzanne Harrison
Vernon & Elizabeth Harshfield
Joyce & Darrel Hart
Joanne & Theodore Hartenstein
Brett Hartkopp
Robert & Coral Hartl
Kevin Hartley
Lori Hase
Helen Haskin & George Bousfield
Larry Hastings
Jeanine Hathaway
Eileen & Don Hawkins
Kellie Hayden
Sally Hayes
Rita Haynes-Newton
Marsha Healy
Autumn Hearne

Rae Hederstedt
 Daniel Hege
 David Heim & Nancy Thompson
 Chris Heim
 Sharilyn Heiman
 Mark & Carrie Heiman
 Justin Hein
 Fred & Joyce Heismeyer
 Louis & Terry Redford Heldman
 Bobby Helms
 Wayne Hemmen
 Alex Hendee
 Carrie Henderson
 Kathryn & John Henderson
 Julie Henderson
 Brian & Jessica Henning
 Elizabeth Henry
 Brian & Suzanne Hepburn
 Christina Hepner
 Alan Hering
 Lindsey Herkommer Devries &
 Chris Devries
 Gretchen & Denny Herlocker
 Pat Herman
 Stacy Hermansen
 Anne Heskett
 William & Judy Hess
 Joyse Hess-Rodda
 Nazanin Hessabi
 Julie Hey
 Harriet Hickman
 Kiley Hicks
 Elizabeth Hicks
 Greta Hiebert & Nathan Smucker
 Alice Hiebert
 Mika Hier
 S Diane Hill
 Robyn Hill
 Jeralyn Hill
 Gerald Hill
 Pamela Hill
 Jo Hillen
 Patricia Hinojos
 Darryl Hinshaw
 Linda & Steven Hirsch
 Carol & Gene Hirsh
 Lisa Hittle
 Warren & Sharon Hixson
 Yun-Ching Ho
 Christine Hockett
 Anita & Perry Hodge
 Edith Hodgson
 Greg Hoefer
 Sam & Gina Hoefgen
 Phillip & Vivian Kay Hoffman
 Cheryl & Paul Hogan
 Miranda Hoge

Marlene Hoglund
 John Holecek
 Heidi Holle-Williams
 Robert & Ruth Rutschman Holliday
 Anita Hollos
 Sharon Holsey
 Rebecca Holt
 Charles Hoover
 Doretha & Clarence Horn
 Loren Horn
 Walter & Ellen Horn
 Helen Hornberger
 Danna & Garret Hotmar
 Lisa Hotvedt
 Carol Houdyshell
 Melissa Houston
 Phillip Houston
 Deborah Howard
 Michael Dwyer & Rebecca Hoyer
 Robin Huber
 Byrum & Stephanie Huff
 Donald Hufford
 Janeen Hughes
 Ben & June Huie
 Roberta Hulbert
 Cindy & Bob Hull
 Gwen & Jeff Hunt
 Sandra Hunter
 Chris Hutchens
 Joe Hutchings
 Patrick Hutchison
 Jane & Russell Icke
 Rebecca Ignowski
 Vicky & Lyndon Is liefson
 Alan & Bobbie Jaax
 Kenneth Jack
 Bob & Pat Jackson
 Carla Jackson-Patton
 Steve Jacobs
 Dan Jacobs & Delane Vaughn
 Lynnette Jacobsen
 Leslie James
 Elizabeth & Alfred James III
 Michele Janssens
 Ken Janzen
 Dorothy Janzen
 Scott & Roberta Jehle
 Deann & Steven Jenkins
 Bradley Jenkins
 Catherine & John Jenkinson
 Enoch Jennison
 Leslie Jensby
 Gail Jensen
 David Jensen & Dr Paula Worley
 Donna Jensen
 Wallace & Debora Jensen
 Larry & Rita Jeter

Dr. Ward & Nancy Jewell
 Louis & Margaret Johansen
 John & Kathryn Voth
 Shannon Johnson
 Gary & Tammie Johnson
 Philip & Sheila Johnson
 Frank Johnson
 Marilyn & Peter Johnson
 Craig & Suzie Johnson
 Stephen & Lou Ann Johnson Jr.
 Donna Johnson
 Maurice Johnson
 Peggy & John Johnson
 Stuart & Susan Johnson
 Daniel Johnson
 Joyce Johnson
 Douglas & Patricia Johnson
 Paul Johnson
 Joseph Johnson
 Bill Johnston
 Amy Johnston
 Ronni Johnston
 Max Johnston
 Catherine Johnston
 Cynthia Johnston
 Lyle & Lisa Jones
 Calvin Chase Jones
 Anita Jones
 Pamela Jones
 Rita Jones
 Beverly & J. Russell Jones
 Linda Jordan
 Sam Jossie
 Fadi Joudi
 James Juhnke
 Carol June
 Swati Kabirpanthi &
 Kamlesh Goswami
 Janet Kadel
 Kevin & Anne Kaff
 H Joan & Melvin Kahn
 Roger Kaiser
 Daniel Kalal
 Mike Kandt
 Karen & Armin Gerhard
 Kathleen & Robert Mellor
 David Kauffman
 Larry Kaufman
 Cheryl & Eugene Kaufman
 Janet & Roger Kaufman
 Reid Kaufmann
 Jacie Ziegelbein
 Timothy Kaul
 Elizabeth Kay
 Delana Kaylor
 Laura & Gregg Keefe
 Anita Kehr

Joann Keiter
Gregory Atty
Tad Keller
Pam & Garland Keller
Rick & Janet Kellerman
Jonna & Patrick Kelly
Betsy Kelly
Cindy Kelly
Linda & Willie Kendrick
Jeff & Patricia Gorham Kennedy
Elizabeth & Dennis Kennedy
Brian Kennell
J Andrew Kenyon Jr.
Kevin Keplar
Charles & Patsy Kerley
Mindy Kershaw
Fayyaz Khan
Roma & Christopher Kidd
Cheryl Kiekel
Lorine & Harold Kieler
Julie & Matthew Kielt
Laurel Kiley
Michael Kilgore
Sean Killingsworth
Marissa King
Marie King & Edward Ehinger
Sheila Kinnard
Dr. Rebecca Kirby
Linda Kirby
Ruby & Tom Kirk
Dave & Mary Kirkbride
Jordan Kirtley
William Kitchen
Catherine Kitchen
Ron Kite
Valerie & John Klaassen
Christina Klausmeyer
James Klaver
Barbara Klingman
Stacey Kluge
Cathy Klusman
Dr. Thomas & Kathryn Kluzak
Charolett Knapick
Sam Knecht Jr.
Brian Kneeland
Emerson & Annie Kneller
Bettina Knight
Keith & Steffanie Knopp
Nancy & Ted Knopp
Janice Knox
Charles & Jerri Koeber
Shannon Koehn
Joyce & Lyle Koehn
Kathleen Koehn
Donald Koke
Julie & Clinton Koker
Becky Koller

Christine & Maurice Korphage
Donna & Mark Kostner
Sandor & Karra Kostya
Meredith Lynn Kowalsky
Alys & Joe Kowing
Jean Kozubowski
Steven & Pat Kraskow
Todd Krehbiel
Craig Kreiser
Ann & Ted Krone
Christine & Fred Kubik
Steve & Imogene Kubin
Matt Kuestersteffen
Rima & Haig Kurdian
John Kurtz
Janis Kuttler
Robert & Gina Lee
David & Catherine Lachapelle
Michael & Susan Lamb
Sammy Lambrechtse
Marilyn Lamm
Eric & Michelle Lamp
Lisa & Ronald Land
Kathy Landis & Miles Reimer
Jennifer Lane
Jimmy & B D Laney
Elise & Pat Cleary
Peter Arthur &
Sarah Johnson Langenwalter
Kevin Langenwalter
Scout Lanier
Alice Larosa
Eric & Debra Larson
Kurt Laurie
Molly & Charles Lavacek
David Law
Lawing & Gorney Llc
Kevin Lawlor
Judy Lawrence
Brian Leabo
Daniel Leak
Thomas Leavitt
Jonathan & Stephanie Lebeda
Brendan & Katrina Lee
Matthew Lee
Shirley Lefever-Davis
Pat & Leroy Lehman
Michael Lehr
Sara Lehrman
Sharon & Daniel Leiker
Amos Leitner
Allison & Don Lemons
Dr. Lendon & Gay Troiani
Wylene & Doug Lengel
Janice Leonard
Sheryl Lesage
Vivian & Ronald Leupp

Jacqueline Levings
Valerie & Steve Lewallen
Rebecca Lewis
Brent Lewis
Treva & Gerald Lichti
Alan & Robin Lies
Sherri & Charles Liles
Gary Lincoln
Scott Lindemann
Steve Linder
Danese Lindsay
David Link
Susan & Bernard Linnebur
Chris Linnens
David & Cynthia Linscheid
Amy Lippoldt
Lisa & James French
Janet Lister
Cliffton & Lavonna Loesch
Jason Loewen
Cynthia & Marcus Loganbill
Jill & John Lokke
Linda & Kirk Longhofer
Andrew Longhofer
Jeff Longwell
Stacey Lopez
Richard & Delia Lopez
Dawne & David Lowden
Michael Lowry
Leblanc Productions Ltd
Kimberly Ltrujillo
Mr. & Mrs. William Lucas
John & Carter Luerding
Donna Luetters
Delia Lujano
Dr. Adam Lukens
Brittany Lundberg
Kim Caldwell
James Lynch
Karen & Richard Crowson
Anne & Steven Maack
Javonnie & Charles Maak
Patricia Mabie
John Madden
Michael Madecky
Jeff & Jody Magee
Eric & Barbara Mainz
Andrew Malcolm
Patricia Malcolm
Ralph Malin & Carole Malin
Debbie & Dale Maltbie
Janice Manlove
Thomas & Catherine Manning
Barbara & Neil Marcus
Ashleigh & Jesse Marks
Jim & Patty Marlett
Megan Marmor

Leonard Marotte	Terry McDonald	Kenneth Miller
Pat Marriott	Patricia McDonnell	Lateefah Miller
Steve & Dee Marsh	Norma McElwain	Timothy & Janet Miller
Betty Marshall	Beverly McFarland	Rebecca & Kevin Miller
Teresa Marshall-Patterson	Charles & Nancy McGuire	Cheryl Miller
Jon Marshall-Potter	Dr. Cheryl McGuire & Dr. Robert Moore	Jerry Milleson
Weldon Martens	Linda McHugh	Madeleine Milligan
Holly & Rod Martens	Gae & Sandy McKay	Brandon Mills
Gary & Ginny Marti	Emily McKenna	Pamela Miner
Roger Martin	Mary McKenney & James McKenney	Susan Miner
Ann Martin	Tim McKenzie	Elizabeth Minerva
Joyce Martin	Janice & James McKinney	Kathryn Minick
Coy & Joan Martin	Cheryl McKinney	Julie Minks
Susan & Keith Martin	Margaret McKinney	Kent Miracle
Julie Martin	Sarah McLaughlin	Jeremy Mirarck
Margo Martin	Dallas McLeod	Peggy & Harry Mishler
Pauline Martin	Mary McMackin	Monica Mitchell
Katie Mason & Matt Cramer	Robert McMillen	Ann & Matthew Mitchell
Mike & Rochelle Mason	Glenda McNew	Melanie Mitchell
Charles & Janeen Masters	Emily & Thomas McReynolds	Katie & Jeremy Mitchell-Koch
Cheryl Mastin	Vinita McSpadden	Gregory Mittman &
Donna Mastroly	Amy McWhirt & Terry Quiett	Johanna Feist Mittman
Margaret Mathewson	Lela Meadow-Conner	Nikki Modellmog
Charlene Mathis	Rose & Paul Meals	Michael Moeder
Tara Mathur	Lana Mederos	Susan Lohrey & Leon Moeder
Treva & Balbir Mathur	Ann Medlin	Aimee Shank
Ardena Matlack	Lisa & Jordan Meitner	Mark & Dinah Mohesky
Linda & Del Matney	Diane & Gregory Meitner	Elizabeth Mohler
Linda & Ronald Matson	Aj Menges	Tara Mollhagen
Nancy & Frank Mattke	Terry Merrifield	Rami Monsour
Georgianna & Scott Mattke	Dr. Charles Merrifield	Roger & Allyson Moon
Eve Mattucci	Virginia & Leo Merriman	Michael Moore
Robert May	Dr. James & Beverly Mershon	Rebecca Moore
Robert & Anne Mayle	Morgan Metcalf	Dr. Justin Moore &
Susan Mayo & Nasir Islam	Jan Meyer	Dr. Tracy Williams
Josh & Sara Maze	Alexandria Meyer	Teresa Moore
Mark & Alyce Mazur	Mark Meyerhoff	Ryan Moore
Paul & Sylvia McAlister	Amanda Meyers	Thomas & Joan Moore
Verna McBee	Susanna Micaldi	Richard & Karen Moore
Phyllis McCabe	Sandra Michael	Kimberly Moore
Abigail McCarthy	Alexis & John Michael	Chris & Tiffany Moos
Joanne McClelland	Nancy Michaelis	Aaron & Julie Moreland
Michelle McClendon	Mike Michalski	Nathan J Lorraine & Wesley Morgan
Rogena McClure	John Mierau	Laura Morgan
Shawn McClure	Allan & Jan Milbradt	Vicki Mork
Yolanda McCollom	Marilyn & Richard Milhon	Debra Morrell
Mike McCormick	Shaunna Millar	Connie Morris
Dr. Patrick & Katherine McCoy	Elizabeth Miller	Monica Morris
Dr. Marcia McCoy	Wayne & Kandy Miller	William Morris
Susan McCoy	Marcia & Steven Miller	Barbara Morrison
Jenny McCracken	Nathan Miller	Michael Morriss
Madeline McCullough &	Trudy & Joe Miller	Jessica Morton
Tanner Wilson	Celeste Balog & Wes Miller	Theresa Mott
Jess McCullough	David & Lori Miller	Jessica Mounts
Debbie McCurdy	Karl & Kathy Miller	Doug Moyer
Erin McDaniel	Dennis Hardin & Leta Miller	Craig Mueller
Lyndell McDonald Jr.		Lisa Mujica

Gwendolyn Mukes-Baker
Kevin Mullins & Ann Resnick
Dr. Richard Muma
Shirley Muncie
John & Patricia Muntz
Patrick Munz & Mark Kahabka
Annette Murach
Tina Murano
William Muret
Krista & John Murray
Gordon & Barbara Murray
Constance Musgrave
Gail Muston
Gail & James Myers
John & Nancy Myers
Pennie Myers & Don Nance
Evan Myers
Kaye & Walter Myers
Suzanne Myers-McDuffett
Tamara & Kevin Mykel
Cris Naegele
Sanford Nathan & Kirsten Zerger
Linda Neal
Jane Neave
Garry & Elaine Neel
Catherine Neelly-Burton
Faye Neil
Philip Nellis
Kelli Nelson & Spencer Cody
John Nelson
Michelle Nentwig
Molly Nespor
Jon Netson
Dr. Gaylen & Loretta Neufeld
Russell & Kendra Neufeld
Kathy Neufeld & Michael Dunn
Carol Newby
Phillip & Miriam Newman
Kay & Darwin Newton
Lieu & Adam Nguyen
Hau Nguyen
Kathy Ngyuen
Dana Nichol
Grace & David Nichols
Ty Nighswonger
Shanna Nispel
Vanessa Noble
Miriam Nofsinger
Mark Nolen
Jeffrey Nordgren
Diane & David Norris
Karen & Don Norton
Steven Nossaman
Linda & Robert Nugent
Erika Nulan
Mathew O'Brien
Nancy O'Donnell

Pat O'Donnell
Linda K O'Shea & Donald Wineke
Scott Oakes
Kim & Bradley Oblak
Brendan Obryhim
Margaret Ochs
Justin Ochs
Mary Ohlemeir
Michael Ohlsen
Vasiliki Oldziej
Judith & Victor Olmstead
Natalie & Brad Olmsted
Donald Olsen
Mary Jane Olson
Jennifer Oneal
Sam & Judy Ontjes
Sue & Marilyn Opie
Peter Orsi II
Randall & Shayne Osborne
John Osborne
Lila Osborne
Dr. Joyce Oster
John Oswald
Frederick Otero
Travis & Lisa Overholtzer-Bruce
Charity Overman
Blake Overson
Diane Overstreet & Gaye Clements
Rev Connie Pace
Joanne & Bruce Pafume
Dr. Leslie Page
Greg Page
Diana & Dr. John Palenz
Marjorie Palmer
Evan & Karen Palmer
Andrea Palmer
Cathleen Palmer-Tuck &
Mandy Phelps
Matt Pankratz
Kerry & Shelley Parham
Martin Park
Alan Parker & Ann Zerger
Patricia Parker
Natasha Parker
Jennifer & Ronald Parsons
Mr. & Mrs. Charles Parsons
Gerald Paske
Ronald Pasmore
Doug Patry
Kimberly Patterson
Kay Patton
Kristen Patty & Charles Banks
Michael & Minnie Martin
Wilfred Pearce
Bernice Pearson
Jason Pechanec
Luanna Peck

Sharon & Robert Pedroja
Phyllis Peete
Paul Pendergraft
Patsy Penner
Reno & Edith Penner
Donald & Carolyn Penner
Sara & Alfred Campbell
Loren Pack & Leslie Perez
Erik Perkins
Trina & Ronald Perovich
Lisa Perry & Jim Helmick
Courtney & Dr. John Perry
Tamara Perry
Jane Persons
Tom Peterie
Doug Peters
Janet & Fred Petersen
Maynard & Dorothy Peterson
Sandra Peterson
Jennifer Pettersen Melcher
Heather Petty
David Leib & Elizabeth Peyser
Hugo Phan
Paul Phelan
Randy Phelps
Irne Phillips
David Phillis
Michael & Ann Phipps
Dr. Keith Pickus & Deirdre O'Farrell
Catherine Pierce
Lucinda Pierce
Jae Pierce-Baba & Dr. Joseph Baba
Lois Pierson
Taryn Pierson
James Pigg
Brenda Pilger
Sean Pineda
Emily & William Pischnotte
Dr. Dwight & Lavonne Platt
Dr. George Platt
Patrice & Terry Plenert
Cheryl Plucker
Rev Michael Poage &
Dr. Gretchen Eick
Stacey Pogoe
Lynn & Jack Pohlenz
Martha Poinsett
Michael Pointer
Dr. Anthony Pollock
Randy Porter
Nan Porter
Diane & Scott Post
Kirk Postier
Mark Postovit Jr.
Feryl & Chuck Potter
Zinal Pourhussin
Jonathan Powell

Barbara Helm-Powell &
 James Powell
 Fletcher Powell
 Jesse Powers
 Karen & Chris Prater
 Steve Pratt
 Omer & Joanne Prewett
 Alycia Price
 Tony Princ
 Pamela Pryor
 Randy Pulec & Jeanne Raitt
 Rachelle & Alan Pulkila
 Patricia Purvis
 Will Pyles & Kait Howard
 Dr. Diane & Dr. Bruce Quantic
 Sharon & William Quincy
 William & Virginia Quincy
 Dr. Charles Quinn & Rita Hensley
 Frances & Eugene Quint
 Jake & Celeste McCabe
 Daniel Racer
 Geoff & Rebecca Radford
 Talkad Raghuveer
 Behrooz & Saara Rahbar
 Jana Rambo
 Frank & Retha Ramirez
 Joanna Ramondetta
 Tracy Ramsey & Richard Heptig
 Carol Rankin
 Diana Ratliff
 Aleen Ratzlaff
 Sherri Rawlins
 Patrice Rawlins
 Jennifer & Gavin Peters
 Jane Ray
 Chris & Holly Rayl
 Steve & Kristen Reber
 Stephan & Jan Reckers
 Howard & Barbara Redburn
 Elizabeth Redfield
 Greg Reed
 Raymond Rees
 Anne & Wayne Regier
 Miriam Regier
 Cynthia & Charles Regier
 Lance Reid
 Valerie & Ryan Reimers
 Erna & Richard Rempel
 Cindy & Michael Renard
 Carrie Rengers
 Marion Renner
 Marcy Renollet
 Alison & Shawn Replogle
 Madison Reppond
 Oscar Repreza
 Sharon Revell
 Virginia Revering

Glenda & Ernest Reynolds
 Janet & Thomas Rhoads
 Von Rhodes
 Cynthia Rhodes
 Melinda Rice
 Janice Rich
 Steve & Lorraine Richards
 Kate Richards
 Mike Richert
 Janet Richey
 Lori Richey
 Deborah Rieb
 Erick Riedell
 Martha Riedl
 Marie & Richard Riggs
 Lisa & Maurice Riley
 Dr. Carolyn Riley
 Greg & Nikki Rincker
 Mallory Rine
 Julie & Rob Rippy
 Rhonda Ristow
 Tammy & Tom Ritchie
 Megan Rittmiller
 Ivonne Rivera-Newberry
 Kathleen Rivers
 Mei-Sha & Yeai Roan
 Connie Roark
 Cynthia Robb
 Patrick Robb
 Clydean & Ralph Roberson
 Robin Roberts
 Janet & Sanford Roberts
 Karen & Dale Roberts
 Brad Robertson
 Forrest & Jennifer Robinson
 Barbara Robinson
 Nancy Robinson
 Ann Robison
 Sheila Roddy
 Robert Rodriguez
 Myrne & Jon Roe
 Steve Roepken
 Christine Rogers
 James & Jayna Rogers
 Karen & Manning Rogers
 Richard Rohloff
 Kamran Rokhsaz
 William & Judy Rokiski
 Larry Rolander
 Rebecca Rolph
 Per Romson
 Nancy Roop
 Stephanie & Ronald Rosales
 Duncan Rose
 Trish Rose
 Novelene Ross
 Alan & Carol Roth

Barbara & Glen Roths
 Margaret Royston
 Anthony Rubio
 Susan Ruder
 Janine Ruiz
 Cammie & Michael Rumbach
 Carolyn Rundle
 Terri Rupe
 Justin Rupert
 William & Sandra Rupert
 Alex Rusanowsky
 Jason Rushford & Anna Balthazor
 Joan Russell
 Paul Russell
 Dennis Russell
 Ralph Rust
 Rebecca Ruth & Larry Fuqua
 Brenda Ruth
 Courtney & Leslie Ruthven
 Tracy Rutledge
 Doni-Marie Rutledge
 Jamie Ryan
 Marlene Ryan
 Jennifer Rygg
 S & N Millham Charitable Fund
 Lauren Sadler
 Rosemary Sadowske
 Rick Sahatjian
 Lauren Sailsbury
 Amy Salazar
 Priscilla Salem
 Chandy & Shanthi Samuel
 Wanda & Keith Sanborn
 George Sanders
 Karen Sanders-West & Jim West
 Rachel Sanner
 Joaquin & Margaret Santos
 Ron & Lavonne Sawatzky
 Hannah Schaake
 Tony & Julie Schaar
 Mary & Thomas Schaefer
 Martha & Douglas Schamle
 Sue Schamp
 Dawn Schnake
 Ronald & Kathryn Schauf
 Eldon & Karen Schierling
 Molly Schinstock
 Jillian Schlabach
 Harold Schlechtweg
 John & Monica Schlegel
 Carolyn & Jay Schlegel
 John & Karol Schlicher
 Maria Schlotterbeck
 Mark Schlotterbeck
 Brian Schmedding
 Julie Schmidt
 Jason Schmidt

Howard & Marilyn Schmidt
Kimberly Schmidt
Mary Schmidt
Carolyn Schmidt
Trish & Greg Schmidt
Margie Schmidt
Wes & Ada Schmidt-Tieszen
Carolyn J Schmitt
Jennifer & Jason Schmitz
Peggy J Schneegurt
Miah Schneider
Lori Schock
Janet Schoentrup
Gerald Scholl & Dominique Corbeil
Richard & Dolores Schonberg
Janet Schraeder
Dwayne & Sandra Schrag
David Stover
Julia Straw
Melody Street
John & Joan Stretcher
John & Debbi Strickler
Emily Strom
Jill & Mac Stromberg
Marian Stubbs
Bruce & Pat Stucky
Jeanette Stucky
Bob Stuhlsatz
Kathleen Sue & John Slaymaker
Kayla & Jake Suellentrop
Joyce Suellentrop
Michael Sullivan
Patrick & Mahala Sullivan
Pauline Sullivan
Woody & Barbara Swain
Roberta & Bo Swanson
William & Elizabeth Swanson
Dell Swearer
Laura & Kevin Swenson
Jennifer Szambecki-Benninga &
Brant Benninga
Bryan Taber
Andrew Tade
Gordon Talbert
Monica Talbott
Chelle Talbott
Ginger Tarrer
Tracy Tarverdi
Harry & Debbie Taylor
Daniel Taylor
Lauren Taylor
Dawn & Greg Taylor
Nadine & Kevin Taylor
Marta Taylor
Rose Mary Templin
Bill & Fay Terrell
Karen Terry & Patrick Terry

Janice Thacker
Janice Tharpe
Andre Thibault
Walter & Neva Thiessen
Lisa Thimm
Nancy Thimmesch
Sharon & Robert Thom
Judith Thomas
Jesse Thomas
Brad Thomn
Angie & Tom Thompson
Velma & Ron Thompson
Wendy & Mark Thompson
Miles & Cindy Thompson
Nell & Mark Thompson
Adam Thompson &
Ashley Barlow-Thompson
Lisa Wiens Thompson
Bonnie Thompson
James Thomson
Charles Thornhill & Lynda Watkins
Terri Thornton
Ron Sylvester & Gaye Tibbets
Liz Tiede
Dustin Tireman
Janet Tisdale
Bruce & Heidi Tjaden
Margaret & Francis Toews
Craig Tolson
Vanessa Toman
John & Diana Torline
Colette Torres
Lisa & Natalie Tos-Brightup
Brent Townsend
Jeremy Train
Robin Trammell
Arcadia Trask
Jessica & Todd Treadwell
Ginger Trepoy
Carrie Trieschman
Reiko Trigo
Mary & Don Troyer
Faith & Steve Tucker
Janice Tucker
Janice Tuinstra
Vicki Turck
Betty Turgeon
Sara & Darrell Turvey
Jeff & Laura Tuttle
Joann & Bradley Tuzicka
Michael Tweedus
Dr. Rebecca Twietmeyer
Laura Tyler
Brian Ullmann
Elisabeth Ullom
Deborah Ann Umberger
Harlin & Doris Unruh

Willard Unruh
Elizabeth Unruh
Keith & Betty Unruh
Jim & Heidi Unruh
Gail Unruh-Revel
Andrea & Tom Unzicker
Mary Upton
Rebekah & Lyle Valentine
Anthony Van Der Voorn
G. Nelson Van Fleet
Michael & Jeanene Van Meter
Janice & Jeffrey Van Sickle
Kate Van Steenhuyse & Ryan Gates
Charlene & John Van Walleghe
Victoria Erway
William Vanderwall
Pamela Vanlandingham
Elizabeth Joan Vannatta
Carrie Vansickle
Janice & Jeff Vansickle
Margene Vasquez
Thelma Vaughn
Lisa & Dr. James Vayda
Teresa Veazey
Steven Vequist
Carol Vereen
Weston Vice
Mr. & Mrs. Kent Vice
Sandra & Juan Victors
Gordon & Rohini Vieth
Via Christi Villages
Tanner Vincent
Betty & Ted Vlamis
Jonathan Voegeli
Annette Voth
Deborah Wadman & Trina Wheeler
Wayne & Faye Wagner
Scott & Tammy Wagner
Vicki & Nicholas Neal Wagner
Ann Wagner
Joel Wagoner
Diane Wahto & Patrick Roche
Richard Waite
Jane & Dr. David Waldie
Kelly & Elizabeth Walker
Richard Walker
Cynthia Walker
Mary Walker
Jane Walker
Dr. David Wall & Maureen Roos
Rebecca Waller
Nancy & Stephen Walters
Christina & Alec Walterscheid
Barbara & Robert Waltner
Dale & Lynn Ward
Mary Ware
Russell & Rhonda Warren

Joan Warren
 Sandra Wartman
 Patrick & Susan Washburn
 Joan & David Wasser
 Jessica Wasson
 John & Beth Watkins
 Cindy Watson & Andrew Stover
 Brian Watson
 Edith Waugh
 Marsha & Dennis Webb
 Carol Webb
 Joleen & Larry Webb
 Judith & John Weber
 Johnell & Maurice Weddle
 Traci Thompson Weiford &
 Jeff Weiford
 Rodney & Sue Weinmeister
 Edward Weippert
 Brittany WelchRhonda Welch
 Makayla Nasser-Welch
 Donna & Larry Welch
 David & Judy Welfelt
 Peter & Deborah Wellenstein
 Doris & Lawrence Weller
 Shirley Wells
 Kimberly Dimmick Wells
 Jeffery Wells
 Denise Wells
 Mike & Pat Wemmer
 Milford & Joan Wencel
 James & Faith Wenger
 Bethel & David Wentz
 Melvin & Judy Werner
 Susan Wesselowski
 Janet Wesselowski
 Susan & David Wettstaed
 Anna Lanier Weyers
 M E Wheeler
 Michele & Kenneth Wheeler
 Kathy & Brian Whepley
 Colleen Whepley
 Greg Whisman
 Ruth White
 Philip White
 Pamela White
 Holly White
 Frank White
 Betsy Whitehill
 Curtis Whittit
 Jimmy & Susan Charest Wickiser
 Calvin & Nancy Wiebe
 Melissa & Glenn Wiens
 Scott & Pam Wiggins
 Elizabeth Wiley
 Karen & John Wiley
 Nancy Wilhite
 Jean Willard

Maribeth Willard
 Robin Willford
 James & Mary Ellen Williams
 Nolan Williams
 Hamilton Williams
 Julie Williams
 Gail Williams
 Steven Williams & Julianne Martin
 Carolyn Williams
 Richard & Diana Williams
 Lonnie & Sharon Williams
 Leslie Williams
 Troy Williams
 Don & Mary Williams
 Mary & Harry Williford
 Amber Willis
 Frances Willis & Del Smith
 Michael Willome
 John & Kathy Wilson
 Jerry & Barbara Lynn Wilson
 Chris Wilson
 Ed & Nayu Wilson
 Alisha Wilson & Asher Courtney
 Janice Wilson
 Mona Wilson
 Tom Wine
 Linne & Max Winsor
 Ellen & J Todd Winter
 Dr. Linda Winter
 Margaret & William Winter
 Robert Winters
 Phyllis & Donald Wipf
 Joleen Wirtz
 Steve & Tonya Witherspoon
 Rhonda Witherspoon
 Eric Wittman
 Susan Wolcott
 Fred Wolfe
 Ilsa Wolfe
 Ineke Wolfe
 Diana Breit Wolfe
 Marieke Wolfe
 Frederick & Donna Wolfe
 Doreen Womack
 Colin & Lucinda Wood
 Nancy Wood
 Bruce & Janice Woods
 Steve & Kitchel Woods
 Leslie Woods & Michael Youens
 Donald Woodward
 Tanya & William Woolley
 Diane Worth
 Cheryl Wortman
 Ja Layne Wray
 Susan & Ted Wrench
 Mary & John Wright
 Natalie Wright

Nancy Hughes Wright
 Rosemary Wright & Rick Shrader
 Thomas Wright
 Sarah Wurtzler
 Judith Ann & William Wynne III
 Tiffany Wyse
 Stephen & Cathie Yager
 Deanna & Steven Yates
 Sharon Ybarra
 Mary & Samuel Yeager
 Amy Yearout
 Jeffrey Yearout
 David & Lori Yoder
 Lisa & Jay Yoder
 Doug Yoho
 Jihye Christina Yoon
 Winifred & James York
 Gail York
 Mike Youens
 Nancy Young
 Ranal & Lynn Young
 Darlene & Craig Young
 Dr. Michael Young
 Robyn & Cass Young
 James & Kathy Young
 Gilbert Young
 Dawn Ysidro
 Priscilla Zadoka
 Chelsie Zavala
 Jeannie & Marvin Zehr
 Mike Zeiner
 Cassandra Zeiner
 Cliff Zens
 Kelly Zens & Aaron Hover
 Timothy Zepick
 Melva Zimmerman
 Deanna & Dennis Zitterkopf
 Shana Zorn
 Travis Zwenger



Season's Needings

There are many ways you can help KMUW better serve you and your community, and we can use every gift of time, talent or treasure to move forward.

- **Tis the Season** – The end of the calendar year is a perfect time to support KMUW. Wichita Public Radio can take your gift and put every dollar of it to the best use in improving the programs and service you rely on every day.
- **Sustain the Station** – Members who make automatic monthly payments allow KMUW to plan for the future. Provide the station with valuable foresight – become a sustainer and help your public radio station on an on-going basis.
- **IRA Giving** – The IRA charitable transfer legislation allows you to make gifts of up to \$100,000 from your individual retirement account (IRA) to KMUW, tax-free, if you are 70 and a half years of age or older and make your gift by December 31, 2014. The transfer generates neither taxable income nor a tax deduction, so you can benefit even if you don't itemize your tax deductions. Create a powerful legacy, improve your own tax situation and witness the impact of your gift now by taking advantage of this opportunity.

**To give a one-time gift or make an ongoing pledge to KMUW,
or for more info, call 316-978-6789 or go to kmuw.org.**

KMUW is a public service of



**WICHITA STATE
UNIVERSITY**

Notice of Nondiscrimination: Wichita State University does not discriminate in its programs and activities on the basis of race, religion, color, national origin, gender, age, sexual orientation, marital status, political affiliation, status as a veteran or disability. The following person has been designated to handle inquiries regarding nondiscrimination policies: Director, Office of Equal Employment Opportunity, Wichita State University, 1845 Fairmount, Wichita KS 67260-0205; (316) 978-6791.

KMUW 89.1 - Wichita Public Radio is operated as a community service by Wichita State University. *Connect*, the KMUW newsletter, is published for information only and does not constitute a contract. Published by KMUW at Wichita State University, 1845 Fairmount, Wichita, Kansas 67260-0108; Debra Fraser, General Manager.