

SEVERE WEATHER SAFETY PROGRAM

SEVERE WEATHER SOON WILL BE UPON US

Are you prepared? Sedgwick County Emergency Management presents a program developed by the National Weather Service to help educate Sedgwick County citizens about severe weather and ways to stay safe. The following severe weather safety classes are **FREE** of charge for Sedgwick County residents.

As an added bonus, Emergency Management will be giving away a **starter disaster preparedness kit** like the one pictured to the right at each class.

All classes begin at 6:30 p.m., unless otherwise noted.



PROGRAM DATES AND LOCATIONS

Tuesday, February 21

Viola City Building
Main St. & Wilson St.

Wednesday, February 22

Bentley City Building
150 S. Wichita St.

Monday, February 27

Valley Center City Hall
121 S. Merdian

Wednesday, March 1

Colwich City Building
310 S. Second St.

Thursday, March 2

Mount Hope Community Building
105 S. Ohio St., Mt. Hope
Combined class for Andale & Mt. Hope

Saturday, March 4 - 10 a.m.

Mulvane Fire Station
910 E. Main St.

Monday, March 6

Kechi City Hall
220 W. Kechi Rd.

Tuesday, March 7 - 10 a.m.

McConnell AFB, Upstairs Auditorium,
Bldg 1185
Open to Military Personnel ONLY

Tuesday, March 7

Wichita Central Community Church
Activity Center - 6100 W. Maple
Use the NE entrance and parking lot
Presented by Chance Hayes, NWS - Wichita



Wednesday, March 8

Goddard City Building
118 N. Main St., Goddard
Combined class for Garden Plain & Goddard

Thursday, March 9

City of Sedgwick, Senior Center
107 W. 5th

Monday, March 13

Maize City Hall
10100 W. Grady

Tuesday, March 14

Derby Public Library
1600 Walnut Grove

Monday, March 27

Cheney Fire Department
525 N. Main St.

Tuesday, March 28

Bel Aire City Building
7651 E. Central Park Ave.

Monday, April 3

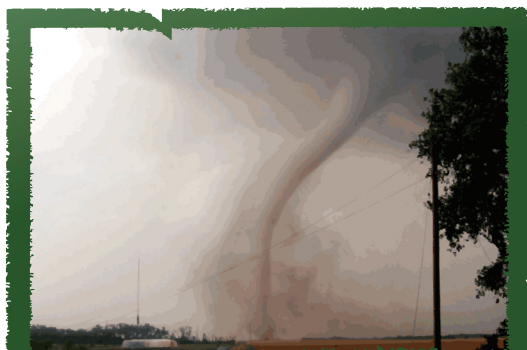
Clearwater Community Center
921 Janet Ave.

Thursday, April 6

Haysville Police Department
200 W. Grand Ave.

Thursday, April 20

Park City Senior Center
6100 N. Hydraulic St.



Presenter: Cody Charvat, Training & Exercise Officer, SCEM



Sedgwick County...
working for you

Sedgwick County
Emergency Management
714 N. Main, Wichita, KS 67203
316-660-5959
www.sedgwickcounty.org

STORMS & TORNADOES CAN BE APPROPRIATELY PREPARED FOR. ADDITIONAL STORMS CAN OCCUR WITHOUT WARNING. FLOODING FROM STORMS CAN OCCUR WITHOUT WARNING.