

# Q2•3



Program Guide KENW-TV/FM  
Eastern New Mexico University  
March 2014



**NATURE**

*Ireland's Wild River*

*Festival 2014*



# When to watch from *A* to *Z*

## Channel 3-2 – March 2014

**All Aboard** – Sundays, 1:30 p.m. (23rd, 30th only);  
Mondays, 10:00 p.m. (10th, 24th only)  
**American Woodshop** – Saturdays, 6:30 a.m.;  
Thursdays, 11:00 a.m. (except 13th)  
**America's Heartland** – Saturdays, 6:30 p.m. (except 15th)  
**America's Test Kitchen** – Saturdays, 8:00 a.m.; Mondays, 11:00 a.m. (begins 10th)  
**Antiques Roadshow** – Mondays, 7:00 p.m./8:00 p.m. (except 3rd, 10th); 11:00 p.m.;  
Sundays, 7:00 a.m.  
**Are You Being Served?** – Saturdays, 8:00 p.m./8:30 p.m. (22nd, 29th only)  
**Ask This Old House** – Saturdays, 4:00 p.m. (except 15th)  
**Austin City Limits** – Saturdays, 9:00 p.m. (22nd, 29th only)/12:00 midnight  
**Aviators** – Sundays, 12:00 noon (30th only)  
**BBC Newsnight** – Fridays, 5:00 p.m.  
**BBC World News** – Monday–Friday, 6:30 a.m./4:30 p.m.  
**Bake Decorate Celebrate!** – Mondays, 11:00 a.m. (ends 3rd)  
**Beads, Baubles and Jewels** – Mondays, 12:30 p.m.  
**Beauty of Oil Painting** – Fridays, 12:30 p.m.; Saturdays, 12:00 noon (except 1st)  
**Biocentury This Week** – Sundays, 6:30 p.m. (30th only)  
**Charlie Rose** – Tuesday–Thursday, 11:00 p.m. (11:30 p.m. on 12th)  
**Charlie Rose: The Week** – Fridays, 8:30 p.m. (except 7th, 14th);  
Mondays, 5:00 p.m.  
**Classic Art Showcase** – Sunday–Saturday, 1:00 a.m.–6:00 a.m.  
**Classic Gospel** – Sundays, 8:00 a.m./4:00 p.m.  
**Classical Stretch** – Monday through Friday, 6:00 a.m.  
**Closer to Truth** – Sundays, 2:00 p.m. (23rd, 30th only)  
**Consuelo Mack WealthTrack** – Fridays, 7:30 p.m.  
**Cooking 80/20** – Tuesdays, 11:00 a.m.; Saturdays, 7:30 a.m. (begins 29th)  
**Creative Living** – Tuesdays/Thursdays, 12:00 noon;  
Tuesdays, 9:30 p.m. (except 4th, 11th); Saturdays, 2:00 p.m. (except 8th)  
**Cultura** – Sundays, 12:00 noon (23rd only)  
**Fons & Porter's Love of Quilting** – Saturdays, 1:30 p.m. (except 8th)  
**Frontline** – Tuesdays, 10:00 p.m.; Thursdays, 7:00 p.m.  
"Rape in the Fields" – 18th, 20th  
"TB Silent Killer" – 25th, 27th  
**Globe Trekker** – Sundays, 11:00 a.m. (23rd, 30th only)  
**Healthy Body/Mind** – Wednesdays, 10:00 p.m. (except 12th);  
Sundays, 3:00 p.m. (23rd, 30th only)  
**Hometown** – Saturdays, 3:00 p.m. (except 15th)  
**In Focus** – Sundays, 12:30 p.m. (23rd, 30th only)  
**In Pursuit of Passion** – Mondays, 10:30 p.m. (ends 17th)  
**It's Sew Easy** – Tuesdays, 12:30 p.m.  
**Joanne Weir's Cooking Class** – Saturdays, 2:30 p.m. (except 8th, 15th)  
**Joy of Music** – Sundays, 9:00 a.m./9:30 a.m. (except 16th)  
**Joy of Painting** – Saturdays, 11:30 a.m. (except 1st)  
**Jubilee X** – Thursdays, 10:00 p.m. (except 6th, 13th)  
**Knit and Crochet Now!** – Tuesdays, 11:30 a.m.  
**Lawrence Welk Show** – Saturdays, 7:00 p.m. (22nd, 29th only)  
**Market to Market** – Fridays, 7:00 p.m.  
**Masterpiece Classic** –  
"Downton Abbey IV" – Episode 8 – Sunday, 2nd, 6:00 p.m. (end)  
"Mr. Selfridge II" – Sundays, 8:00 p.m. (begins 30th); Friday repeats  
scheduled in April  
**McLaughlin Group** – Sundays, 5:30 p.m. (30th only)  
**Motorweek** – Saturdays, 9:30 a.m. (except 1st)  
**Moyers & Company** – Sundays, 6:00 p.m. (30th only)  
**Nature** – Wednesdays, 7:00 p.m. (except 12th); Saturdays, 11:00 p.m. (except 1st)  
"Ireland's Wild River" – 5th only  
"Cloud: Challenge of the Stallions" – 8th only  
"Survivors of the Firestorm" – 15th only  
"Frogs: The Thin Green Line" – 19th, 22nd  
"What Plants Talk About" – 26th, 29th  
**New Fly Fisher** – Wednesdays, 11:00 a.m.  
**News 3 New Mexico** – Tuesday–Thursday, 5:00 p.m.  
**Nightly Business Report** – Monday–Friday, 5:30 p.m.  
**Nova** – Wednesdays, 8:00 p.m. (except 5th, 12th);  
Saturdays, 10:00 p.m. (10:30 p.m. on 1st; no play on 8th, 15th);  
Sundays, 12:00 midnight  
**P. Allen Smith's Garden Home** – Saturdays, 10:00 a.m. (except 1st)  
**Paint This with Jerry Yarnell** – Saturdays, 11:00 a.m. (except 1st)  
**Pati's Mexican Table** – Saturdays, 9:00 a.m.; Mondays, 11:30 a.m.  
**PBS NewsHour** – Monday–Friday, 6:00 p.m./12:00 midnight  
**PBS NewsHour: Weekend** – Sundays, 5:00 p.m. (30th only)

## *A to Z listings for Channel HD3-1 are on pages 18 & 19*

**Quilt in a Day** – Saturdays, 12:30 p.m. (except 8th)  
**Quilting Arts** – Saturdays, 1:00 p.m. (except 8th); Wednesdays, 12:30 p.m.  
**Red Green Show** – Thursdays, 9:30 p.m. (except 6th, 13th)  
**Religion/Ethics** – Sundays, 3:30 p.m. (23rd, 30th only)  
**Report from Santa Fe** – Saturdays, 6:00 p.m.  
**Savor the Southwest** – Saturdays, 7:30 a.m. (ends 22nd)  
**Second Opinion** – Sundays, 6:30 a.m.  
**Sewing with Nancy** – Saturdays, 5:00 p.m. (4:30 p.m. on 8th, no play on 15th)  
**Sew It All** – Saturdays, 5:30 p.m. (except 8th, 15th)  
**Sit and Be Fit** – Monday, Wednesday, Friday, 12:00 noon  
**Smart Travels** – Sundays, 6:00 a.m.  
**Song of the Mountains** – Thursdays, 8:00 p.m. (20th, 27th only)  
**Sportslook** – Thursdays, 9:00 p.m. (20th, 27th only)  
**Star Gazers** – Wednesdays, 11:57 p.m.; Saturdays, 10:57 a.m./9:57 p.m.;  
Sundays, 2:57 p.m./11:57 p.m.; Mondays, 10:27 p.m.  
**Taste of History** – Thursdays, 11:30 a.m. (except 13th); Saturdays, 8:30 a.m.  
**This Old House** – Saturdays, 3:30 p.m. (except 15th);  
Wednesdays, 10:30 p.m. (except 12th)  
**Travel Detective** – Mondays, 10:30 p.m. (begins 24th)  
**Victory Garden** – Saturdays, 10:30 a.m. (except 1st)  
**Washington Week** – Fridays, 8:00 p.m.  
**Welcome to My Studio** – Thursdays, 12:30 p.m.;  
Saturdays, 4:30 p.m. (except 15th)  
**Well Read** – Sundays, 2:30 p.m. (23rd, 30th only)  
**Woodsmith Shop** – Saturdays, 7:00 a.m.  
**Woodturning Workshop** – Wednesdays, 11:30 a.m.; Saturdays, 6:00 a.m.  
**You Should Know** – Tuesdays, 9:00 p.m. (except 4th, 11th)

### *Special Programs*

**3 Steps to Incredible Health!** – Monday, 3rd, 10:00 p.m.  
**30 Days to a Younger Heart** – Saturday, 1st, 9:30 a.m.;  
Sunday, 9th, 2:30 p.m.  
**60s Girl Grooves** – Thursday, 13th, 9:00 p.m.  
**60s Pop Rock & Roll** – Wednesday, 12th, 7:00 p.m.  
**American Experience "1964"** – Tuesday, 18th, 7:00 p.m.  
**America's Wild West** – Tuesday, 11th, 7:00 p.m.  
**Blood Sugar Solution 10-Day Detox Diet** – Sunday, 9th, 1:00 p.m.  
**Brain Change with David Perlmutter, MD** – Wednesday, 5th, 8:30 p.m.;  
Sunday, 9th, 11:30 a.m.  
**Call the Midwife** – Sundays, 7:00 p.m. (begins 30th)  
**Celebration of Blues & Soul** – Thursday, 6th, 9:00 p.m.;  
Monday, 10th, 8:30 p.m.; Saturday, 15th, 8:00 p.m.  
**Celtic Woman: Emerald** – Saturday, 8th, 7:00 p.m.;  
Sunday, 16th, 9:00 p.m.  
**Classical Rewind** – Friday, 7th, 8:30 p.m.  
**Colonial Williamsburg "Civil War Ironclads"** – Thursday, 13th, 11:00 a.m.  
**Daniel O'Donnell: Stand Beside Me** – Saturday, 1st 7:00 p.m.;  
Sunday, 9th, 8:30 p.m.  
**David Arkenstone's Symphonic Adventure** – Sunday, 16th, 6:30 p.m.  
**Deepak Chopra: What Are You Hungry For?** – Sunday, 16th, 1:30 p.m.  
**Dr. Wayne Dyer: I Can See Clearly Now** – Sunday, 2nd, 12:00 noon;  
Monday, 3rd, 7:00 p.m.; Sunday, 16th, 9:00 a.m.  
**Easy Yoga: The Secret to Strength and Balance** – Sunday, 2nd, 5:00 p.m.;  
Saturday, 8th, 2:00 p.m.; Tuesday, 11th, 10:00 p.m.;  
Sunday, 16th, 3:00 p.m.  
**Ed Slott's Retirement Rescue for 2014** – Sunday, 16th, 12:00 noon  
**Film School Shorts "Risky Business"** – Friday, 28th, 11:30 p.m.  
**First Freedom: The Fight for Religious Liberty** – Monday, 17th, 9:00 p.m.  
**Gentleman's Rule in Concert** – Sunday, 16th, 5:00 p.m.  
**Great Performances** –  
"Bob Dylan: 30th Anniversary Concert Celebration" –  
Saturday, 8th, 9:00 p.m.  
"Dukes of September" – Saturday, 1st, 8:30 p.m.;  
Friday, 14th, 8:30 p.m.  
"Steve Martin & the Steep Canyon Rangers" – Thursday, 6th, 7:00 p.m.  
**Great Performances at the Met "Eugene Onegin"** (3 hrs.) –  
Sunday, 23rd, 5:00 p.m.  
**Hawking** – Sunday, 23rd, 10:00 a.m.  
**Heal Yourself: Mind Over Medicine** – Saturday, 8th, 12:30 p.m.  
**Heart 411** – Sunday, 9th, 10:00 a.m.; Tuesday, 11th, 8:30 p.m.;  
Saturday, 15th, 4:30 p.m.

# Q2·3 Program Guide

THE MAGAZINE FOR THE FRIENDS OF PUBLIC BROADCASTING MARCH 2014

**Q2-3 Program Guide** is published each month by the Broadcast Center, a non-profit public service division of Eastern New Mexico University.

**Q2-3 Program Guide** (Cue to 3) is available to friends contributing \$35 per year or more to the support of public broadcasting. Senior Citizen and Student memberships are available for \$25. All contributions are tax deductible. Donations should be made payable to Friends of **KENW-TV** or to Friends of **KENW-FM** or **KMTH-FM**.

**KENW-TV**, Channel 3, can be seen on UHF TV analog translators in the following areas:

Carlsbad - Channel 49; Ruidoso - Channel 49  
Tucumcari - Channel 32; Ft. Sumner - Channel 34.

**KENW-TV digital transmitters** are located in: Artesia; Carlsbad; Ft. Sumner; Hobbs; Portales/Clovis; Roswell; Tucumcari; Ruidoso.

**KENW-FM**, 89.5 MHz, Portales; **KMTH-FM**, 98.7 MHz, Maljamar; **KENM-FM**, 88.9 MHz, Tucumcari; **NM**; **KENU-FM**, 88.5 MHz, Des Moines, NM; **KENG-FM**, 88.5 MHz, Ruidoso, NM; and FM translators in:

Apache Springs - 90.9 MHz  
Clayton - 93.5 MHz  
Conchas Dam - 88.3 MHz  
Des Moines - 106.1 MHz  
Ft. Sumner - 91.7 MHz  
Las Vegas - 107.1 MHz  
Midland, TX - 99.5 MHz  
Montoya - 90.7 MHz  
Raton - 104.7 MHz  
Roswell - 91.1 MHz  
Ruidoso - 89.3 MHz  
Wagon Mound - 92.1 MHz

**Telephone:** From Cannon A.F.B., Clovis, Portales, and Roosevelt County, call (575) 562-2112. Others, call toll-free 1-888-FOR-KENW (367-5369).

**Mailing Address:**

KENW-TV/FM  
52 Broadcast Center, ENMU  
1500 South Avenue K  
Portales, NM 88130

**Web site:** www.kenw.org

**E-Mail:** kenw@enmu.edu — kenwfm@enmu.edu

**Fax:** (575) 562-2590

We always welcome your comments and/or suggestions:

Toll-free 1-888-FOR-KENW (367-5369)

- Festival 2014** showcases popular PBS personalities in all-new specials, including **Daniel O'Donnell: Stand Beside Me**; **Celtic Woman: Emerald**; **Suze Orman's Financial Solutions for You**; **Dr. Wayne Dyer: I Can See Clearly Now**; **Under the Streetlamp: Let the Good Times Roll**; and **David Arkenstone's Symphonic Adventure**.
- Easy Yoga: The Secret to Strength and Balance with Peggy Cappy** reveals ways to reduce stress and have more mobility, while **Heart 411**, with two of the top cardiac doctors in the country, arms viewers with practical information that will help prevent heart disease and stroke.  
**Heartbeat of Home** is a dance extravaganza that blends the thunder and drama of Irish dance with the sultriness of Latin American salsa and the rhythms of Africa. Rock & roll royalty Donald Fagen, Michael McDonald, and Boz Scaggs join forces as their own new super group in **"Dukes of September"** on **Great Performances**. The world television premiere of **A Celebration of Blues & Soul** features a 1989 concert with Stevie Ray Vaughan and some of the biggest names in blues and rock history, including Billy Preston and Bo Diddley.  
**Titanic – Band of Courage** is the dramatic story of the eight musicians who continued to play on as the great ship went down.
- The Story of the Jews** is a five-part series that brings to life 3,000 years of Jewish history and experience.  
**The Soap Myth**, a critically acclaimed play, dramatizes the powerful confrontation between survivor memory and historical memory in depicting the insidiousness of a sophisticated Holocaust denial.  
**Secrets of the Dead "The Lost Diary of Dr. Livingstone"** follows a team's attempts to decipher the famed explorer's lost field diary which no one has been able to read since his death 140 years ago.  
**"TB Silent Killer"** on **Frontline** tells the heartwrenching stories behind the spread of this deadly infection.
- "All of Me: A Story of Love, Loss, and Last Resorts"** on **Independent Lens** tells the story of the "Girls," a group of morbidly obese women who choose weight loss surgery as a last resort to deal with their health and mobility challenges. The nuns and midwives of Nonnatus House move into their new premises as season three begins on **Call of the Midwife**, followed by **"Mr. Selfridge,"** based on the life of the flamboyant American entrepreneur, which returns for a second season on **Masterpiece Classic**.

## Q2·3 Program Guide Staff

Editor: Linda Stefanovic  
Assistant Editor: Jenifer Bacon  
Program Log Descriptions: Karen Leonhardt  
Printing: University Press

Eastern New Mexico University is an affirmative action and equal opportunity employer. The University does not discriminate on the basis of race, color, national origin, sex, or handicap in its programs, activities, or employment. Persons seeking additional information about the University's nondiscrimination policy should contact the Executive Director of Planning & Analysis, ENMU, Station #2, Portales, NM 88130.

## Special Programs (continued) –

**Heartbeat of Home** – Sunday, 2nd, 8:00 p.m.; Thursday, 13th, 7:00 p.m.  
**Independent Lens** –  
    **"All of Me: A Story of Love, Loss, and Last Resort"** – Monday, 24th, 9:00 p.m.  
    **"Medora"** – Monday, 31st, 9:00 p.m.  
**Inspector George Gently** –  
    **"Gently Evil"** – Sunday, 2nd, 10:00 p.m.; Friday, 7th, 11:00 p.m.  
    **"Peace and Love"** – Sunday, 9th, 10:00 p.m.; Friday, 14th, 10:30 p.m.  
    **"Gently Upside Down"** – Friday, 21st, 10:30 p.m.  
    **"Goodbye China"** – Sunday, 23rd, 8:00 p.m.; Friday, 28th, 10:00 p.m.  
**Joe Bonamassa: Tour de Force – Live From London** – Monday, 10th, 7:00 p.m.  
**Life Focus "A Symbol of Forgiveness"** – Sunday, 2nd, 11:30 p.m.  
**Live From Lincoln Center "Patina Miller"** – Friday, 28th, 9:00 p.m.  
**Masterpiece Sneak Preview "Mr. Selfridge II"** – Friday, 7th, 10:00 p.m.; Sunday, 16th, 8:00 p.m.  
**Mavericks: In Time** – Saturday, 15th, 9:30 p.m.  
**Moments to Remember** – Wednesday, 12th, 9:00 p.m.  
**POV "Listening is an Act of Love"** – Tuesday, 4th, 10:30 p.m.  
**Preparing for Disaster: Starting Now** – Wednesday, 19th, 9:00 p.m.  
**Rick Steves' Italy: City of Dreams** – Sunday, 2nd, 10:00 a.m.; Saturday, 15th, 2:30 p.m.  
**Secrets of the Dead "The Lost Diary of Dr. Livingstone"** – Wednesday, 26th, 9:00 p.m.; Sunday, 30th, 10:00 a.m./10:00 p.m.  
**Sewing with Nancy: Sew Amazing Scarves** – Saturday, 8th, 4:30 p.m.  
**Shark Island Whaler: The Real-Life Sequel to Moby Dick** – Saturday, 1st, 11:30 p.m.;  
**Soap Myth** – Friday, 21st, 9:00 p.m.; Sunday, 23rd, 9:30 p.m.  
**Story of the Jews (5 Pts.)** – Tuesday, 25th, 7:00 p.m. (2 episodes); Tuesday, April 1st, 7:00 p.m. (3 episodes)  
**Sun Studio Sessions "Devon Allman"** – Thursday, 6th, 10:30 p.m.  
**Super Skyscrapers (4 Pts.)** – Sundays, 11:00 p.m. (begins 9th; 10:30 p.m. on 9th)  
**Suze Orman's Financial Solutions for You** – Tuesday, 4th, 7:00 p.m.; Sunday, 9th, 5:00 p.m.  
**Titanic – Band of Courage** – Sunday, 9th, 7:00 p.m.  
**Train Your Dog Like a Pro** – Sunday, 2nd, 3:00 p.m.  
**Under the Streetlamp: Let the Good Times Roll** – Tuesday, 4th, 9:00 p.m.; Saturday, 15th, 6:30 p.m.  
**Watercolor with Birdsong** – Saturday, 1st, 11:00 a.m.

# Festival 2014 — March 1st–March 16th

## Daniel O'Donnell: Stand Beside Me

**Daniel O'Donnell: Stand Beside Me** is a concert celebration of Irish, country, gospel, rock, movie tunes, and long-time fan favorites.

The concert is filled with notable classics, including the popular 1956 sing-a-long “Que Sera, Sera” and Dean Martin’s signature song “That’s Amore.” Sprinkled in the mix are songs such as “Hey, Mr. Moon,” “Flying with Angels,” the heart-felt “Our Anniversary,” and Marty Robbins’ “A White Sport Coat (And a Pink Carnation).” Other performances include “My Father’s House,” “Dear God,” “Silver Wings,” “How Great Thou Art,” and “God’s Plan.”

**Daniel O'Donnell: Stand Beside Me** airs Saturday, March 1st at 7:00 p.m. and Sunday, March 9th at 8:30 p.m. On HD3-1, it can be seen Sunday March 9th at 8:30 p.m.

## Celtic Woman: Emerald

**Celtic Woman: Emerald** spotlights fan favorites from the group’s treasure chest of Celtic songs. Vocalists Lisa Lambe, Susan McFadden, Chloe Agnew, and Celtic violinist Máiréad Nesbitt perform timeless songs such as “Danny Boy,” “Amazing Grace,” “Shenandoah,” and “Awakening.”

**Celtic Woman** dazzles their audience with this concert experience that showcases the group’s sparkling pure voices, bewitching choreography, and fairytale charms along with the talents of a group of world-class musicians, bagpipers, and championship Irish dancers.

**Celtic Woman: Emerald** airs Saturday, March 8th at 7:00 p.m. and Sunday, March 16th at 9:00 p.m. On HD3-1, it airs Sunday, March 9th at 2:00 p.m. and Saturday, March 15th at 8:00 p.m.

## Suze Orman’s Financial Solutions for You

The goal of **Suze Orman’s Financial Solutions for You** is to help viewers manage their money today and make smart choices toward a more economically secure tomorrow.

The program suggests that financial decision-making should be guided by an understanding of “the goal of money,” which Suze defines as “to make you feel secure.” She gives up-to-date advice on a broad set of financial issues, and insightfully covers a wide range of topics, including how to invest, whether to buy or rent a home, saving for retirement, what kind of life insurance to buy, wills and trusts, student loans, and more.

**Suze Orman’s Financial Solutions for You** can be seen Tuesday, March 4th at 7:00 p.m. and Sunday, March 9th at 5:00 p.m. On HD3-1, it airs Sunday, March 2nd at 8:00 p.m.



Daniel O'Donnell



Suze Orman



Celtic Woman



David Arkenstone

## Dr. Wayne Dyer: I Can See Clearly Now

**Dr. Wayne Dyer: I Can See Clearly Now**, a new three-hour special, is the most personal program of Dr. Dyer’s career. In it, he offers an intimate conversation about what his own personal experiences have taught him: There are no accidents, and all the choices we make and actions we take weave a life tapestry uniquely our own.

Exploring the five principles that have guided his own choices, Dr. Dyer shows why it is important to have—and act on—a burning desire, why life’s lowest moments can reveal our true purpose, and how the principle of love allows us to see our lives more clearly.

**Dr. Wayne Dyer: I Can See Clearly Now** airs Sunday, March 2nd at 12:00 noon, Monday, March 3rd at 7:00 p.m., and Sunday, March 16th at 9:00 a.m. On HD3-1, it airs Monday, March 3rd at 7:00 p.m.

## Under the Streetlamp: Let the Good Times Roll

**Under the Streetlamp** brings the American Radio Songbook to a whole new level. These four extremely talented and charismatic former cast members of the Broadway musical *Jersey Boys* bring classic hits of the 50s, 60s, and 70s back to the millions of fans who fell in love with this music in the first place.

In **Under the Streetlamp: Let the Good Times Roll**, singers Michael Ingersoll, Shonn Wiley, Michael Cunio, and Christopher Kale Jones perform such classics as “Why Do Fools Fall in Love,” “Goin’ Out of My Head,” “Oh! Darling,” “Do You Love Me,” and many more.

**Under the Streetlamp: Let the Good Times Roll** airs Tuesday, March 4th at 9:00 p.m. and Saturday, March 15th at 6:30 p.m. On HD3-1, it airs Friday, March 7th at 9:00 p.m. and Saturday, March 8th at 6:00 p.m.

## David Arkenstone’s Symphonic Adventure

Multi-Grammy Award-nominated international chart-topping composer David Arkenstone presents **David Arkenstone’s Symphonic Adventure**, a spectacular 90-minute cutting-edge live multi-media event featuring the world famous Cirque de la Symphonie acrobats, Celtic dancers, and a full concert orchestra with choir, blended with breathtaking digital stagecraft, costumes, and special effects.

Featuring enchanting vocalist Charlee Brooks to debut the just-released “Lovéren,” visionary composer Arkenstone is joined by special guests violinist Karen Briggs and piper Eric Rigler, for a celebration of David’s soaring “soundtracks for the imagination.”

**David Arkenstone’s Symphonic Adventure** will be broadcast Sunday, March 16th at 6:30 p.m.



## Easy Yoga: The Secret to Strength and Balance

Discover how yoga can come to the aid of anyone, regardless of age, who wants to increase strength and mobility, in **Easy Yoga: The Secret to Strength and Balance with Peggy Cappy**.

Yoga is both a natural weight-bearing exercise that builds strength and a low-impact way to work wonders for balance. Peggy Cappy, whose gentle yoga approach has helped many reduce stress and create greater comfort and ease in body, mind, and spirit for more than 40 years, shows how yoga poses can increase range of motion, improve awareness of the body, help prevent bone loss, and keep the metabolism running efficiently.

**Easy Yoga: The Secret to Strength and Balance** airs Sunday, March 2nd at 5:00 p.m., Saturday, March 8th at 2:00 p.m., Tuesday, March 11th at 10:00 p.m., and Sunday, March 16th at 3:00 p.m.



Stevie Ray Vaughan

## A Celebration of Blues & Soul

**A Celebration of Blues & Soul** offers PBS viewers a once-in-a-lifetime musical treat—the world television premiere of a historic concert featuring Stevie Ray Vaughan and some of the biggest names in blues and rock history performing their greatest hits. Recorded in 1989, the video and audiotapes of this concert were presumed lost for nearly 20 years.

The concert contains magnificent performances from brilliant American icons we have since lost—Billy Preston, Willie Dixon, Albert Collins, Bo Diddley, Duck Dunn, and Lafayette Leaks, along with dazzling Stevie Ray Vaughan performances.

**A Celebration of Blues & Soul** airs Thursday, March 6th at 9:00 p.m., Monday, March 10th at 8:30 p.m., and Saturday, March 15th at 8:00 p.m. On HD3-1, it airs Thursday, March 13th at 7:00 p.m.

## Heartbeat of Home

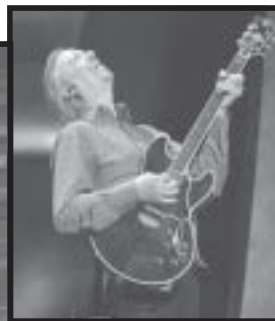
**Heartbeat of Home** is a high-octane two-hour dance extravaganza that lovingly encompasses a diverse array of multicultural influences, blending the thunder and drama of Irish dance with the sultriness and attitude of Latin American salsa and the glorious rhythms of Africa. This tantalizing musical tour de force was created by the producers and director of *Riverdance*, and takes place in a dreamland of oceans and starlight, in neon-shining cities of the 21st century, and in epic open spaces.

With a world-class cast of 29 dancers and 10 musicians, the production employs cutting-edge projection technology to create a dream world of joyous, heart-stopping music and dance.

**Heartbeat of Home** will be broadcast Sunday, March 2nd at 8:00 p.m. and Thursday, March 13th at 7:00 p.m. On HD3-1, it airs Friday, March 7th at 7:00 p.m.



Heartbeat of Home



Boz Scaggs

## Heart 411

**Heart 411** reveals what every man and woman needs to know about the #1 killer in the United States—heart disease. Two of the top cardiac doctors in the country—cardiac surgeon Marc Gillinov, MD and cardiologist Steven Nissen, MD—outline keys to preventing heart disease and stroke, uncover the truth about current tests and treatments, and reveal the future of cardiac surgery and care.

The 90-minute special arms viewers with practical information they will need to talk with their doctor, ask informed questions, understand the treatments available to them, and make the best decisions for their health.

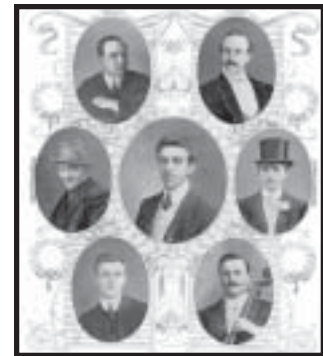
**Heart 411** will be broadcast Sunday, March 9th at 10:00 a.m., Tuesday, March 11th at 8:30 p.m., and Saturday, March 15th at 4:30 p.m. On HD3-1, it will be broadcast Monday, March 10th at 7:00 p.m.

## Great Performances “Dukes of September”

Rock & roll royalty Donald Fagen (Steely Dan), Michael McDonald (The Doobie Brothers), and Boz Scaggs join forces as their own new super group, “The Dukes of September” on **Great Performances**. The special pays tribute to the R&B and soul music that inspired them, along with fresh, exciting performances of some of their greatest hits.

Among the many crowd-pleasing favorites are “What a Fool Believes,” “Lowdown,” “Lido Shuffle,” “Pretzel Logic,” “Reelin’ In the Years,” and many more.

**Great Performances** “Dukes of September” can be seen Saturday, March 1st at 8:30 p.m. and Friday, March 14th at 8:30 p.m. On HD3-1, it can be seen Wednesday, March 5th at 8:30 p.m.



## Titanic—Band of Courage

**Titanic – Band of Courage** is the dramatic and inspiring story of the eight musicians who continued to play on as the ship went down in a valiant effort to provide peace, calm, and dignity to those facing certain death.

As the *London Daily Mirror* reported on April 23rd, 1912: “In the whole history of the sea, there is little equal to the wonderful behavior of these humble players, who, in the last moments of the great ship’s doom, when all was plainly lost, when braver and hardier men might almost have been excused for doing practically anything to save themselves, stood responsive to their conductor’s baton.”

**Titanic – Band of Courage** features 18 new recordings of songs the band would have played that night, a blend of overtures, waltzes, popular/ragtime, and hymns.

**Titanic – Band of Courage** airs Sunday, March 9th at 7:00 p.m. On HD3-1, it can be seen Friday, March 14th at 7:00 p.m.

## The Story of the Jews with Simon Schama

Prize-winning author of 15 books and Emmy Award-winner Simon Schama brings to life 3,000 years of Jewish history and experience in a new five-part documentary series, **The Story of the Jews with Simon Schama**. The series follows Schama as he travels from Russia and the Ukraine to Egypt, Israel, and Spain, exploring the imprint that Jewish culture has made on the world and the drama of suffering, resilience, and rebirth that has gone with it.

"If you were to remove from our collective history," said Schama, "the contribution Jews have made to human culture, our world would be almost unrecognizable. There would be no monotheism, no written Bible, and our sense of modernity would be completely different... what I hope people will take away from the series is that sense of connection: a weave of cultural strands over the millennia, some brilliant, some dark, but resolving into a fabric of thrilling, sometimes tragic, often exalted creativity."

**The Story of the Jews** draws on primary sources that include the Elephantine papyri, a collection of 5th-century BC manuscripts illuminating the life of a town of Jewish soldiers and their families in ancient Egypt; the



astonishing trove of documents—the Cairo Geniza—recording the world of the medieval Jews of the Mediterranean and Near East; and the records of disputations between Christians and Jews in Spain.

The series includes new archaeological research that is transforming our understanding of the earliest world of the Jews, and highlights evidence from the visual arts—spectacularly illustrated Bibles, the brilliantly colorful decoration of synagogues, as well as the glorious music that carried Jewish traditions through the centuries.

Schama brings together memory and actuality, past and present, sorrows and celebrations, vindications and challenges, and makes felt the beating pulse of an epic of endurance that has been like no other—a story that belongs to everyone.

On both 3-2 and HD3-1, **The Story of the Jews** airs Tuesday, March 25th at 7:00 p.m. (2 episodes back-to-back) and Tuesday, April 1st at 7:00 p.m. (3 episodes back-to-back). On HD3-1, the programs repeat the next day at 6:00 a.m. and 12:00 noon.

## The Soap Myth

**The Soap Myth** dramatizes the powerful confrontation between survivor memory and historical memory in depicting the insidiousness of a sophisticated Holocaust denial. More than a half century after World War II, at the desperate urging of a passionate survivor, a young investigative reporter finds herself caught between



Greg Mullavey (left) and Andi Potamkin

numerous versions of the same story and trying to separate fact from fiction.

Did the Nazis make soap from the corpses of their murdered Jewish victims? Played out against the backdrop of deadline reporting and journalistic integrity, Jeff Cohen's critically acclaimed play **The Soap Myth** uses this horrific possibility as its catalyst. It questions who deserves the right to write history—those who have lived it and remember, those studying and protecting it, or those seeking to distort its very existence? And finally, what responsibility should others take once they know the truth? This filmed production stars Greg Mullavey and Andi Potamkin.

**The Soap Myth** can be seen Friday, March 21st at 9:00 p.m. and Sunday, March 23rd at 9:30 p.m.

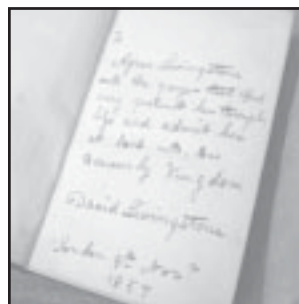


## The Lost Diary of Dr. Livingstone

David Livingstone is the British missionary whose exploration into the 'dark heart' of Central Africa turned him into a legend. His meeting with American journalist Henry Morton Stanley has been immortalized by the iconic phrase, "Dr. Livingstone, I presume."

To celebrate the 200th anniversary of Livingstone's birth in March 1813, "The Lost Diary of Dr. Livingstone" on **Secrets of the Dead** follows a pioneering American team's ground breaking attempts to decipher the famed explorer's lost field diary. Faded and illegible, no one has been able to read these words since Livingstone's death 140 years ago. Now, state-of-the-art multi spectral imaging technology begins an incredible journey inside the mind of this 19th century adventurer. The writings in this diary suggest Livingstone was far different from the legend that surrounds him.

"The Lost Diary of Dr. Livingstone" on **Secrets of the Dead** airs Wednesday, March 26th at 9:00 p.m. and Sunday, March 30th at 10:00 a.m. and 10:00 p.m. On HD3-1, it airs Wednesday, March 26th at 9:00 p.m., Thursday, March 27th at 2:00 p.m., and Sunday, March 30th at 3:00 p.m.



## FRONTLINE

### TB Silent Killer

In "TB Silent Killer," **Frontline** tells the heart-wrenching stories behind the spread of a deadly infection threatening people around the world.

Despite efforts to eradicate it, tuberculosis remains one of the world's deadliest diseases, a contagious airborne illness infecting more than eight million people a year. But most alarming to global health officials are spreading strains of TB that are highly resistant to drug treatments.



In this intimate film, **Frontline** travels to the epicenter of the TB crisis—the southern African nation of Swaziland—where families are waging an often hopeless fight for survival.

"TB Silent Killer" on **Frontline** can be seen Tuesday, March 25th at 10:00 p.m. and Thursday, March 27th at 7:00 p.m. On HD3-1, it airs Tuesday, March 25th at 9:00 p.m. and Wednesday, March 26th at 11:00 a.m. and 4:30 p.m.



## INDEPENDENT LENS

### All of Me: A Story of Love, Loss, and Last Resorts

The “Girls” have been friends—and morbidly obese—for years. They have tried every diet and every pill. But now, getting older and facing more health and mobility challenges, choosing weight-loss surgery is about to upset everything they thought they knew about health, happiness, friendship, and love. The experience presents a host of issues and consequences, some they expected, some they feared, and some they never could have imagined. But one reality is true for all of them: having surgery means the loss of their primary coping strategy (eating).

Although “All of Me: A Story of Love, Loss, and Last Resorts” on **Independent Lens** focuses on just one group of women, their story is not unique. More than 90 million Americans are obese. Our society’s diet and exercise talking points do not compute for those who have hundreds of pounds to lose. 200,000 people a year are choosing weight-loss surgery and 80% of them are women.

“All of Me” focuses on the journeys of three of the “Girls”: the strong-willed Judy, who is determined to succeed; Dawn, who had an early career as the fat model, and calendar girl Bridget, who is struggling with both her weight and her identity. The heaviest of the “Girls,” Zsalyann, who is over 500 pounds, is trying to save enough money for surgery.



The “Girls”

Through the stories of these unforgettable women, “All of Me” shines light on our attitudes, (mis)understandings, and prejudices about obesity—its causes, challenges, and the intense psychological struggle so many have with food that no surgery or diet can cure. For a group that is so often vilified, joked about, or ignored, the program provides a much-needed platform for their stories, and encourages viewers to take a fresh look at our own prejudices and complicated relationships with food, fat, and our bodies.

“All of Me: A Story of Love, Loss, and Last Resorts” on **Independent Lens** will be broadcast Monday, March 24th at 9:00 p.m. On HD3-1, “All of Me” can be seen Monday, March 24th at 8:00 p.m. and Tuesday, March 25th at 7:00 a.m. and 1:00 p.m.

### MASTERPIECE Classic

### Mr. Selfridge II

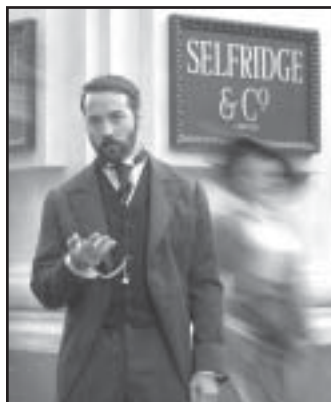
Jeremy Piven and Katherine Kelly lead the cast of familiar faces that return for the second season of the critically-acclaimed “Mr. Selfridge” on **Masterpiece Classic**.

Based on the life of flamboyant American entrepreneur Harry Gordon Selfridge, who founded the world-renowned store on London’s Oxford Street in 1909, the second season picks up the story in 1914 as the store celebrates its 5th anniversary.

Harry (Piven) is proud of the store’s success, but there is no time to rest on his laurels. With rumors rife with talk of war in Europe, he prepares his staff for the challenging times ahead.

Now more than ever, Harry needs his wife, Rose (Frances O’Connor) by his side. But in recent years, they have become increasingly estranged. While Rose spends long periods in America with the couple’s daughters and son, Harry lives the life of a single man in London.

“Mr. Selfridge II” on **Masterpiece Classic** will be broadcast Sundays at 8:00 p.m. beginning March 30th. On HD3-1, the series airs Sundays at 8:00 p.m. and 12:00 midnight beginning March 30th. Additional repeats on both 3-2 and HD3-1 are scheduled in April.



### Call the Midwife III

The nuns and midwives of Nonnatus House move into their new premises as season III begins.

**Call the Midwife**, based on the best-selling memoirs of the late Jennifer Worth, returns for a third season with eight new episodes. The popular series tells colorful stories of midwifery and families in London’s East End.

Stars from season two—Jessica Raine, Helen George, Pam Ferris, and Miranda Hart—are all back, with plenty of drama left from the previous season to deal with: Chummy gave birth to a baby boy; Sister Bernadette followed her heart; and Nonnatus House came under threat of demolition.

The third season takes viewers to 1959, the eve of the Swinging Sixties. The winds of change are sweeping through the country and the residents of Nonnatus House face some momentous changes of their own.

On both 3-2 and HD3-1, **Call the Midwife III** can be seen Sundays at 7:00 p.m. beginning March 30th. On HD3-1, the series repeats at 11:00 p.m. the same day. Other repeats are in April.



(L to R): Trixie, Chummy, Jenny, Cynthia



# ◆ KENW-TV's DAYTIME SCHEDULES ◆

## Kids' Programming, How-to's, and Family Viewing

3-2 (SD) is your regular KENW-TV channel. Channels 3-1 (HD) and 3-3 (SD) require a digital television or a converter box, both with antennas.

### Channel 3-2

#### Monday through Friday

- 6:00 am Classical Stretch
- 6:30 am BBC World News
- 7:00 am Sesame Street
- 8:00 am Dinosaur Train
- 8:30 am Peg + Cat
- 9:00 am SuperWhy!
- 9:30 am Daniel Tiger's Neighborhood
- 10:00 am Sid the Science Kid
- 10:30 am WordWorld (M)
- Peep & the Big Wide World (Tu)
- Angelina Ballerina (W)
- Signing Time! (Th)
- Mister Rogers (F)
- 11:00 am America's Test Kitchen (M)
- Cooking 80/20 (Tu)
- New Fly Fisher (W)
- American Woodshop (Th)
- Bob the Builder (F)
- 11:30 am Pati's Mexican Table (M)
- Knit & Crochet Now! (Tu)
- Woodturning Workshop (W)
- Taste of History V (Th)
- Thomas & Friends (F)
- 12:00 pm Sit and Be Fit (MWF)
- Creative Living (TuTh)
- 12:30 pm Beads, Baubles and Jewels (M)
- It's Sew Easy (Tu)
- Quilting Arts (W)
- Welcome to My Studio (Th)
- Beauty of Oil Painting (F)
- 1:00 pm Curious George
- 1:30 pm Clifford the Big Red Dog
- 2:00 pm Cat in the Hat
- 2:30 pm Arthur
- 3:00 pm Martha Speaks
- 3:30 pm Wild Kratts
- 4:00 pm WordGirl
- 4:30 pm BBC World News America
- Charlie Rose: The Week (M)
- Scully/The World Show (Tu)
- Religion & Ethics Newsweekly (W)
- European Journal (Th)
- BBC Newsnight (F)
- 5:30 pm Nightly Business Report
- 6:00 pm PBS NewsHour

### Channel 3-3

#### Monday through Friday

- 6:00 am Curious George
- 6:30 am Cat in the Hat
- 7:00 am Peg + Cat
- 7:30 am Dinosaur Train
- 8:00 am Sesame Street
- 9:00 am Daniel Tiger's Neighborhood
- 9:30 am Sid the Science Kid
- 10:00 am SuperWhy
- 10:30 am Thomas & Friends
- 11:00 am Caillou
- 11:30 am Clifford the Big Red Dog
- 12:00 pm Mister Rogers (M)
- Peep & the Big Wide World (Tu)
- Biscuit Brothers (W)
- Signing Time! (Th)
- Maya & Miguel (F)
- 12:30 pm Bob the Builder (M)
- Barney & Friends (Tu)
- Angelina Ballerina (W)
- WordWorld (Th)
- Enviropals! (F)
- 1:00 pm Sid the Science Kid
- 1:30 pm Martha Speaks
- 2:00 pm Arthur
- 2:30 pm WordGirl
- 3:00 pm Wild Kratts
- 3:30 pm Peg + Cat
- 4:00 pm Dinosaur Train
- 4:30 pm Word World (M)
- Angelina Ballerina (Tu)
- Bob the Builder (W)
- Curious George (Th)
- Bali (F)
- 5:00 pm Signing Time! (M)
- Biscuit Brothers (Tu)
- Peep & the Big Wide World (W)
- Hands on Crafts (Th)
- Hey Kids! Let's Cook (F)
- 5:30 pm Imagination Station (M)
- SciGirls (Tu)
- Biz Kid\$ (W)
- Curiosity Quest (Th)
- Electric Company (F)
- 6:00 pm Cat in the Hat
- 6:30 pm SuperWhy!
- 7:00 pm Arthur
- 7:30 pm WordGirl
- 8:00 pm Wild Kratts
- 8:30 pm Martha Speaks

#### Saturday

- 6:00 AM Peg + Cat
- 6:30 am Dinosaur Train
- 7:00 am Thomas & Friends
- 7:30 am Angelina Ballerina
- 8:00 am Bob the Builder
- 8:30 am Sid the Science Kid
- 9:00 am SuperWhy
- 9:30 am Arthur
- 10:00 am Electric Company
- 10:30 am SciGirls
- 11:00 am WordGirl
- 11:30 am Cyberchase
- 12:00 pm Wild Kratts
- 12:30 pm Maya & Miguel
- 1:00 pm Curious George
- 1:30 pm Cat in the Hat
- 2:00 pm Peep & the Big Wide World
- 2:30 pm Word World
- 3:00 pm Caillou
- 3:30 pm Clifford the Big Red Dog
- 4:00 pm Peg + Cat
- 4:30 pm Biscuit Brothers
- 5:00 pm Biz Kid\$
- 5:30 pm Martha Speaks
- 6:00 pm Wild Kratts
- 6:30 pm Imagination Station
- 7:00 pm Curiosity Quest
- 7:30 pm SciGirls
- 8:00 pm Signing Time!
- 8:30 pm Electric Company

#### Sunday

- 6:00 am Peg + Cat
- 6:30 am Dinosaur Train
- 7:00 am Daniel Tiger's Neighborhood
- 7:30 am SuperWhy!
- 8:00 am Sid the Science Kid
- 8:30 am Arthur
- 9:00 am Wild Kratts
- 9:30 am Martha Speaks
- 10:00 am Cyberchase
- 10:30 am Electric Company
- 11:00 am Imagination Station
- 11:30 am Hands on Crafts for Kids
- 12:00 pm Curiosity Quest
- 12:30 pm Biz Kid\$
- 1:00 pm Bali
- 1:30 pm Signing Time!
- 2:00 pm Biscuit Brothers
- 2:30 pm Peg + Cat
- 3:00 pm SuperWhy!
- 3:30 pm Curious George
- 4:00 pm Cat in the Hat
- 4:30 pm Peep & the Big Wide World
- 5:00 pm Word World
- 5:30 pm Caillou
- 6:00 pm Clifford the Big Red Dog
- 6:30 pm Bob the Builder
- 7:00 pm Thomas & Friends
- 7:30 pm Angelina Ballerina
- 8:00 pm SciGirls
- 8:30 pm Biz Kid\$

### Channel 3-1

#### Saturday

- 5:00 am Barney & Friends
- 5:30 am Angelina Ballerina
- 6:00 am Curious George
- 6:30 am Cat in the Hat
- 7:00 am Peg + Cat
- 7:30 am Dinosaur Train
- 8:00 am Daniel Tiger's Neighborhood
- 8:30 am SuperWhy
- 9:00 am Thomas & Friends
- 9:30 am Bob the Builder

#### Sunday

- 5:00 am Sesame Street
- 6:00 am Curious George
- 6:30 am Cat in the Hat
- 7:00 am Peg + Cat
- 7:30 am Dinosaur Train
- 8:00 am Daniel Tiger's Neighborhood
- 8:30 am SuperWhy
- 9:00 am Sid the Science Kid
- 9:30 am Wild Kratts
- 10:00 am Arthur
- 10:30 am Martha Speaks
- 11:00 am WordGirl
- 11:30 am Electric Company
- 12:00 pm Cyberchase



# KENW TV SCHEDULES 3-1 (HD), 3-2 (SD) AND 3-3 (SD)

Our regular KENW-TV Channel (3-2) is listed below in bold. It can be seen by those who use cable or one of our analog translators listed on page 3. Schedule 3-1 is our High Definition (HD) Channel and 3-3 is our Children's/Encore Standard Definition (SD) Channel. Those with either digital TV sets or analog sets with converter boxes (both sets require antennas) can receive all three channels in most parts of our viewing area. KENW-TV has digital transmitters in the following cities: Clovis/Portales; Hobbs/Lovington; Roswell; Artesia; Fort Sumner; Tucumcari; Carlsbad; and now Ruidoso.

**KENW-TV's 3-1 schedule (below in italics) is carried by DirecTV in most counties of New Mexico.**  
**KENW-TV's 3-2 schedule (below in bold) is carried on Dish Network in most counties of New Mexico.**

## Saturday 1st

- 6:00 **Woodturning Workshop** "Dried Bowl"
- 6:30 **American Woodshop**  
"Tiled, Marble Top Washstand"
- 7:00 **Woodsmith Shop** "Top Shop Tips"
- 7:30 **Savor the Southwest** "Local Produce"
- 8:00 **America's Test Kitchen**  
"Great American Classics"
- 8:30 **Taste of History**  
"Dolley & James Madison"
- 9:00 **Pati's Mexican Table** "Pot Luck Party"
- 9:30 **30 Days to a Younger Heart**
- 10:00 3-1 *This Old House Hour*
- 11:00 **Watercolor with Birdsong**  
3-1 *Julia Child - Cooking with Master Chefs*
- 11:30 3-1 *Victory Garden*
- 12:00 3-1 *This Old House*
- 12:30 **Quilt in a Day** "Quick Wallhanging"  
3-1 *This Old House*
- 1:00 **Quilting Arts**  
"Machine and Hand Stitching"  
3-1 *Ask This Old House*
- 1:30 **Fons & Porter's Love of Quilting**  
"Deck the Halls Table Runner"  
3-1 *Hometime*
- 2:00 **Creative Living**  
3-1 *Woodwright's Shop*
- 2:30 **Joanne Weir's Cooking Class**  
"Beet Gorgonzola Salad & Veal Chops"  
3-1 *Motorweek*
- 3:00 **Hometime** "Creekside Home Garage"  
3-1 *Martha Stewart's Cooking School*
- 3:30 **This Old House** "Arlington Italianate Project 2014/Deadliest Old House"  
3-1 *Martha Bakes*
- 4:00 **Ask This Old House** Building a high tunnel greenhouse in Mississippi  
3-1 *History Detectives*
- 4:30 **Welcome to My Studio**  
"Cadmium Yellow Light and Medium"
- 5:00 **Sewing with Nancy**  
"Sew Big Quilt Blocks, Pt. 2"  
3-1 *PBS NewsHour Weekend*
- 5:30 **Sew it All** "Chic Shawl"  
3-1 *Charlie Rose: The Week*
- 6:00 **Report from Santa Fe**  
3-1 *Antiques Roadshow*
- 6:30 **America's Heartland**
- 7:00 **Daniel O'Donnell: Stand Beside Me**  
3-1 *Jazz and the Philharmonic*
- 8:30 **Great Performances**  
"Dukes of September"  
3-1 *Joe Bonamassa: Tour de Force - Live in London*
- 9:00 3-3 *Lawrence Welk Show*

- 10:00 3-1 *Austin City Limits*
- 10:30 **Nova** "Ground Zero Supertower"  
3-3 *Classic Gospel*
- 11:00 3-1 *Nature*  
3-3 *Music City Roots: Live from the Loveless Café*
- 11:30 **Shark Island Whaler: The Real-Life Sequel to Moby Dick**
- 11:57 **Star Gazers**
- 12:00 **Austin City Limits** "The Shins/Dr. Dog"  
3-1 *Nova*  
3-3 *42nd Annual Smithville Fiddlers' Jamboree*

## Sunday 2nd

- 6:00 **Smart Travels** "Venice"
- 6:30 **Second Opinion** "Foodborne Illness"
- 7:00 **Antiques Roadshow**  
"Pittsburgh, PA, Pt. 2"
- 8:00 **Classic Gospel** "Down by the Tabernacle"
- 9:00 **Joy of Music**  
"Sights and Sounds of Budapest"
- 9:30 **Joy of Music** "A Musical Journey of Switzerland"
- 10:00 **Rick Steves' Italy: Cities of Dreams**
- 11:30 3-1 *Train Your Dog Like a Pro*
- 12:00 **Dr. Wayne Dyer: I Can See Clearly Now**
- 12:30 3-1 *Washington Week*
- 1:00 3-1 *Charlie Rose: The Week*
- 1:30 3-1 *Market to Market*
- 2:00 3-1 *Religion & Ethics Newsweekly*
- 2:30 3-1 *Ask This Old House*

- 3:00 **Train Your Dog Like a Pro**  
3-1 *Super Skyscrapers*
- 3:30 **Religion & Ethics Newsweekly**
- 4:00 **Classic Gospel**  
"Women of Homecoming, Pt. 2"  
3-1 *Nova*
- 5:00 **Easy Yoga: The Secret to Strength and Balance with Peggy Cappy**  
3-1 *PBS NewsHour Weekend*
- 5:30 3-1 *Washington Week*
- 6:00 **Masterpiece Classic**  
"Downton Abbey IV, Pt. 8"  
3-1 *Masterpiece Classic IV, Pt. 8*
- 7:00 3-1 *Secrets of Highclere Castle*
- 8:00 **Heartbeat of Home**  
3-1 *Suze Orman's Financial Solutions for You*
- 9:00 3-3 *Well Read*
- 9:30 3-3 *Start Up*
- 10:00 **Inspector George Gently** "Gently Evil"  
3-1 *Austin City Limits*  
3-3 *Front and Center*
- 11:00 3-1 *Secrets of Highclere Castle*  
3-3 *Masterpiece Classic "Selfridge, Pt. 1"*
- 11:30 **Life Focus** "A Symbol of Forgiveness"
- 12:00 **Nova** "Ground Zero Supertower"  
3-1 *Masterpiece Classic "Selfridge, Pt. 1"*

## Monday 3rd

- 5:00 3-1 *Classical Stretch*
- 5:30 3-1 *Wai Lana Yoga*
- 6:00 3-1 *Bird Tales*

## KENW-TV on Cable Companies

KENW-TV's 3-1 (High Definition, HD) and 3-2 (Standard Definition, SD) program schedules can be seen on the following cable companies:

- Dexter: Channel 3 (SD) and Channel 470 (HD), Cable One
- Hobbs: Channel 3 (SD) and Channel 703 (HD), Baja Broadband
- Portales: Channel 3 (SD), and Channel 510 (HD), Comcast Cable
- Roswell: Channel 3 (SD), and Channel 470 (HD), Cable One

KENW-TV's 3-2 Schedule (Standard Definition, SD) can be seen on the following cable companies:

- Artesia: Channel 3, PVT
- Carlsbad: Channel 3, Baja Broadband
- Clovis: Channel 3, Suddenlink
- Dexter: Channel 3, PVT
- Eddy County South: Channel 3, Baja Broadband
- Eunice: Channel 3, Baja Broadband
- Farwell: Channel 3, Suddenlink
- Ft. Sumner: Channel 3, Reach Broadband
- Hagerman: Channel 3, PVT
- Jal: Channel 3, Baja Broadband
- Lea County: Channel 3, Baja Broadband
- Loving: Channel 3, Baja Broadband
- Lovington: Channel 3, Comcast
- Melrose: Channel 9, Reach Broadband
- Muleshoe: Channel 5, Reach Broadband
- Texico: Channel 3, Suddenlink
- Tucumcari: Channel 11, Comcast

7:00 3-1 *Masterpiece Classic "Selfridge, Pt. 1"*  
 9:00 3-1 *Taste of History*  
 9:30 3-1 *Cook's Country*  
 10:00 3-1 *In Pursuit of Passion*  
 10:30 3-1 *P. Allen Smith's Garden Home*  
 11:00 3-1 *Front and Center*  
 12:00 3-1 *Bird Tales*  
 1:00 3-1 *Masterpiece Classic "Selfridge, Pt. 1"*  
 3:00 3-1 *Travel Detective*  
 3:30 3-1 *All Aboard*  
 4:00 3-1 *America's Heartland*  
 4:30 3-1 *Front and Center*  
 5:30 3-1 *Nightly Business Report*  
 6:00 3-1 *PBS NewsHour*  
**7:00 Dr. Wayne Dyer: I Can See Clearly Now**  
 3-1 *Dr. Wayne Dyer: I Can See Clearly Now*  
 9:00 3-3 *Charlie Rose*  
**10:00 3 Steps to Incredible Health**  
 3-1 *Charlie Rose*  
 3-3 *Antiques Roadshow*  
**10:30 In Pursuit of Passion**  
 "The Climb – Carrara, Italy"  
**11:00 Antiques Roadshow** "Pittsburgh, PA, Pt. 3"  
 3-1 *Tavis Smiley*  
 3-3 *Independent Lens "More than a Month"*  
**11:57 Star Gazers**  
**12:00 PBS NewsHour**  
 3-1 *Independent Lens "More than a Month"*  
 3-3 *Not in Our Town: Light in the Darkness*

## Tuesday 4th

5:00 3-1 *Classical Stretch*  
 5:30 3-1 *Wai Lana Yoga*  
 6:00 3-1 *Antiques Roadshow*  
 7:00 3-1 *Independent Lens "More than a Month"*  
 8:00 3-1 *Not in Our Town: Light in the Darkness*  
 9:00 3-1 *Healthy Body Healthy Mind*  
 9:30 3-1 *Second Opinion*  
 10:00 3-1 *Closer to Truth*  
 10:30 3-1 *Religion & Ethics Newsweekly*  
 11:00 3-1 *Song of the Mountains*  
 12:00 3-1 *Antiques Roadshow*  
 1:00 3-1 *Independent Lens "More than a Month"*  
 2:00 3-1 *Not in Our Town: Light in the Darkness*  
 3:00 3-1 *Natural Heroes*  
 3:30 3-1 *Start Up*  
 4:00 3-1 *Consuelo Mack WealthTrack*  
 4:30 3-1 *Scully/The World Show*  
 5:00 3-1 *Report from Santa Fe*  
 5:30 3-1 *Nightly Business Report*  
 6:00 3-1 *PBS NewsHour*  
**7:00 Suze Orman's Financial Solutions for You**  
 3-1 *Gentleman's Rule in Concert*  
 8:30 3-1 *30 Days to a Younger Heart*  
**9:00 Under the Streetlamp: Let the Good Times Roll**  
 3-3 *Charlie Rose*  
 10:00 3-1 *Charlie Rose*  
 3-3 *Civilization: The West and the Rest, Pt. 1*  
**10:30 POV** "Listening is an Act of Love"  
**11:00 Charlie Rose**  
 3-1 *Tavis Smiley*  
**12:00 PBS NewsHour**  
 3-1 *Super Skyscrapers*  
 3-3 *In My Lifetime*

## Wednesday 5th

5:00 3-1 *Classical Stretch*  
 5:30 3-1 *Wai Lana Yoga*  
 6:00 3-1 *Civilization: The West and the Rest*  
 8:00 3-1 *In My Lifetime*  
 9:00 3-1 *Family Travel*  
 9:30 3-1 *This American Land*  
 10:00 3-1 *Rough Cut — Woodworking*  
 10:30 3-1 *Woodturning Workshop*  
 11:00 3-1 *Moving with Grace*  
 12:00 3-1 *Civilization: The West and the Rest*  
 2:00 3-1 *In My Lifetime*  
 3:00 3-1 *Julia and Jacques Cooking*  
 3:30 3-1 *Christina*  
 4:00 3-1 *Growing a Greener World*  
 4:30 3-1 *Moving with Grace*  
 5:30 3-1 *Nightly Business Report*  
 6:00 3-1 *PBS NewsHour*  
**7:00 Nature** "Ireland's Wild River"  
 3-1 *America's Wild West*  
**8:30 Brainchange with David Perlmutter, M.D.**  
 3-1 *Great Performances "Dukes"*  
 9:00 3-3 *Charlie Rose*  
**10:00 Healthy Body Healthy Mind**  
 "Alpha-1 Antitrypsin Deficiency"  
 3-3 *Nature*  
**10:30 This Old House**  
 3-1 *Charlie Rose*  
**11:00 Charlie Rose**  
 3-3 *Nova*  
 11:30 3-1 *Tavis Smiley*  
**11:57 Star Gazers**  
**12:00 PBS NewsHour**  
 3-1 *Nature*  
 3-3 *Life on Fire*

## Thursday 6th

5:00 3-1 *Classical Stretch*  
 5:30 3-1 *Wai Lana Yoga*  
 6:00 3-1 *Moyers & Company*  
 6:30 3-1 *Charlie Rose: The Week*  
 7:00 3-1 *Nature*  
 8:00 3-1 *Nova*  
 9:00 3-1 *Fons & Porter's Quilting*  
 9:30 3-1 *Quilt in a Day*  
 10:00 3-1 *Knit and Crochet Now!*  
 10:30 3-1 *Sew it All*  
 11:00 3-1 *POV "Sun Kissed"*  
 12:00 3-1 *Nature*  
 1:00 3-1 *Nova*  
 2:00 3-1 *Life on Fire*  
 3:00 3-1 *In the Americas with David Yetman*  
 3:30 3-1 *Visionaries*  
 4:00 3-1 *Closer to Truth*  
 4:30 3-1 *POV "Sun Kissed"*  
 5:30 3-1 *Nightly Business Report*  
 6:00 3-1 *PBS NewsHour*  
**7:00 Great Performances** "Steve Martin and the Steep Canyon Rangers"  
 3-1 *Moments to Remember*  
**9:00 Celebration of Blues & Soul**  
 3-3 *Charlie Rose*  
 9:30 3-1 *3 Steps to Incredible Health*  
 10:00 3-1 *Charlie Rose*  
 3-3 *Moyers & Company*  
**10:30 Sun Studio Sessions** "Devon Allman"  
 3-3 *Scully/The World Show*  
**11:00 Charlie Rose**  
 3-1 *Tavis Smiley*  
 3-3 *Moving with Grace*  
**12:00 PBS NewsHour**  
 3-1 *This Old House Hour*  
 3-3 *Front and Center*

## Friday 7th

5:00 3-1 *Classical Stretch*  
 5:30 3-1 *Wai Lana Yoga*  
 6:00 3-1 *Arts in Context*  
 6:30 3-1 *Jammin' at Hippy Jack's*  
 7:00 3-1 *Song of the Mountains*  
 8:00 3-1 *This Old House Hour*  
 9:00 3-1 *Globe Trekker*  
 10:00 3-1 *Joy of Painting*  
 10:30 3-1 *Paint This with Jerry Yarnell*  
 11:00 3-1 *Gary Spetz's Painting Wild Places*  
 11:30 3-1 *Welcome to My Studio*  
 12:00 3-1 *Jubilee*  
 1:00 3-1 *Sun Studio Sessions*  
 1:30 3-1 *Built to Last*  
 2:00 3-1 *This Old House Hour*  
 3:00 3-1 *Globe Trekker*  
 4:00 3-1 *Just Seen It*  
 4:30 3-1 *Moyers & Company*  
 5:00 3-1 *European Journal*  
 5:30 3-1 *Nightly Business Report*  
 6:00 3-1 *PBS NewsHour*  
**7:00 Market to Market**  
 3-1 *Heartbeat of Home*  
**7:30 Consuelo Mack WealthTrack**  
**8:00 Washington Week**  
**8:30 Classical Rewind**  
 9:00 3-1 *Under the Streetlamp: Let the Good Times Roll*  
 3-3 *Charlie Rose*  
**10:00 Masterpiece Sneak Preview**  
 "Mr. Selfridge II"  
 3-3 *Moving with Grace*  
 10:30 3-1 *Charlie Rose*  
 11:00 **Inspector George Gently** "Gently Evil"  
 3-1 *Tavis Smiley*  
 3-3 *POV "Sun Kissed"*  
 12:00 3-1 *Washington Week*  
 3-3 *Nature*  
**12:30 PBS NewsHour**

## Saturday 8th

**6:00 Woodturning Workshop**  
 "Earring Stand"  
**6:30 American Woodshop**  
 "Scroll Saw Puzzles & Home Models"  
**7:00 Woodsmith Shop** "Workbench Basics"  
**7:30 Savor the Southwest**  
 "Cooking with Cactus"  
**8:00 America's Test Kitchen** "A Fancy Finale"  
**8:30 Taste of History**  
 "Dolley & James Madison"  
**9:00 Pati's Mexican Table**  
 "Brunch at the Jinich House"  
**9:30 Motorweek**  
**10:00 P. Allen Smith's Garden Home**  
 "Life on Moss Mountain Farm"  
 3-1 *This Old House Hour*  
**10:30 Victory Garden** "Inspired Gardens"  
**10:57 Star Gazers**  
**11:00 Paint This with Jerry Yarnell**  
 "A Bluebird's Paradise, Pt. 2"  
 3-1 *Julia Child – Cooking with Master Chefs*  
**11:30 Joy of Painting** "Trace of Spring"  
 3-1 *Victory Garden*  
**12:00 Beauty of Oil Painting**  
 "Lavender and Lace"  
 3-1 *This Old House*  
**12:30 Heal Yourself: Mind Over Medicine**  
 3-1 *This Old House*  
 1:00 3-1 *Ask This Old House*  
 1:30 3-1 *Hometime*



**2:00 Easy Yoga: The Secret to Strength and Balance with Peggy Cappy**  
3-1 *Woodwright's Shop*  
3-1 *Motorweek*

**3:00 Hometime**  
"Creekside Home Mechanicals"  
3-1 *Martha Stewart's Cooking School*

**3:30 This Old House** "Arlington Italianate Project 2014/Old World New World"  
3-1 *Martha Bakes*

**4:00 Ask This Old House** Quieting a squealing shower; installing a security system  
3-1 *History Detectives*

**4:30 Sewing with Nancy: Sew Amazing Scarves**  
5:00 3-1 *PBS NewsHour Weekend*  
5:30 3-1 *Charlie Rose: The Week*

**6:00 Report from Santa Fe**  
3-1 *Under the Streetlamp: Let the Good Times Roll*

**6:30 America's Heartland**

**7:00 Celtic Woman: Emerald**  
7:30 3-1 *Ed Slott's Retirement Rescue!*

**9:00 Great Performances**  
"Bob Dylan: The 30th Anniversary Concert Celebration"  
3-1 *Independent Lens "More/Month"*  
3-3 *Lawrence Welk Show*

10:00 3-1 *Austin City Limits*  
3-3 *Classic Gospel*

**11:00 Nature** "Cloud: Challenge of the Stallions"  
3-1 *Nature*  
3-3 *Music City Roots: Live from the Loveless Cafe*

**11:57 Star Gazers**

**12:00 Austin City Limits** "Bon Iver"  
3-1 *Nova*  
3-3 *Live from the Artists Den*

## Sunday 9th

**6:00 Smart Travels** "Genoa and the Italian Riviera"

**6:30 Second Opinion**  
"Breast Cancer in Young Women"

**7:00 Antiques Roadshow** "Pittsburgh, PA, Pt. 3"

**8:00 Classic Gospel** "Tribute to the Goodmans"

**9:00 Joy of Music**

**9:30 Joy of Music** "Musical Visit to Dublin"

**10:00 Heart 411**

**11:30 Brainchange with David Perlmutter, M.D.**  
12:30 3-1 *Washington Week*

**1:00 Blood Sugar Solution 10-Day Detox Diet**  
3-1 *Charlie Rose: The Week*  
1:30 3-1 *Market to Market*  
2:00 3-1 *Celtic Woman: Emerald*

**2:30 30 Days to a Younger Heart**

**4:00 Classic Gospel** "Mountain Homecoming"  
3-1 *Nova*

**5:00 Suze Orman's Financial Solutions for You**  
3-1 *PBS NewsHour Weekend*  
5:30 3-1 *Washington Week*  
6:00 3-1 *Nature*

**7:00 Titanic – Band of Courage**  
3-1 *Classical Rewind*

**8:30 Daniel O'Donnell Stand Beside Me**  
3-1 *Daniel O'Donnell: Stand Beside Me*  
9:00 3-3 *Well Read*  
9:30 3-3 *Start Up*

**10:00 Inspector George Gently**  
"Peace and Love"  
3-1 *Austin City Limits*  
3-3 *War Zone/Comfort Zone*

11:00 3-1 *Masterpiece Classic "Selfridge, Pt. 2"*  
3-3 *Masterpiece Classic "Selfridge, Pt. 2"*

**11:30 Super Skyscrapers**  
"One World Trade Center"  
12:00 3-1 *Masterpiece Classic "Selfridge, Pt. 3"*  
3-3 *Masterpiece Classic "Selfridge, Pt. 3"*

**12:30 Nova** "Mt. St. Helens Back from the Dead"

## Monday 10th

5:00 3-1 *Classical Stretch*  
5:30 3-1 *Wai Lana Yoga*  
6:00 3-1 *Nature*  
7:00 3-1 *Masterpiece Classic "Selfridge, Pt. 2"*  
8:00 3-1 *Masterpiece Classic "Selfridge, Pt. 3"*  
9:00 3-1 *Taste of History*  
9:30 3-1 *Cook's Country*  
10:00 3-1 *In Pursuit of Passion*  
10:30 3-1 *P. Allen Smith's Garden Home*  
11:00 3-1 *War Zone/Comfort Zone*  
12:00 3-1 *Natural Beekeeping*  
1:00 3-1 *Masterpiece Classic "Selfridge, Pt. 2"*  
2:00 3-1 *Masterpiece Classic "Selfridge, Pt. 3"*  
3:00 3-1 *Travel Detective*  
3:30 3-1 *All Aboard*  
4:00 3-1 *America's Heartland*  
4:30 3-1 *War Zone/Comfort Zone*  
5:30 3-1 *Nightly Business Report*  
6:00 3-1 *PBS NewsHour*

**7:00 Joe Bonamassa: Tour de Force – Live in London**  
3-1 *Heart 411*

**8:30 Celebration of Blues & Soul**  
3-1 *Deepak Chopra: What Are You Hungry For?*  
9:00 3-3 *Charlie Rose*

**10:00 All Aboard** "East Broad Top"  
3-1 *Charlie Rose*  
3-3 *Antiques Roadshow*

**10:30 In Pursuit of Passion**  
"NYC Beat – NYC, NY"

**11:00 Antiques Roadshow** "El Paso, TX, Pt. 1"  
3-1 *Tavis Smiley*  
3-3 *Independent Lens "Revolutionary Optimist"*

**11:57 Star Gazers**

**12:00 PBS NewsHour**  
3-1 *Program About Unusual Buildings*  
3-3 *Global Health Frontiers*

## Tuesday 11th

5:00 3-1 *Classical Stretch*  
5:30 3-1 *Wai Lana Yoga*  
6:00 3-1 *Antiques Roadshow*  
7:00 3-1 *Independent Lens "Revolutionary Optimist"*  
8:00 3-1 *Global Health Frontiers*  
9:00 3-1 *Healthy Body Healthy Mind*  
9:30 3-1 *Second Opinion*  
10:00 3-1 *Closer to Truth*  
10:30 3-1 *Religion & Ethics Newsweekly*  
11:00 3-1 *Song of the Mountains*  
12:00 3-1 *Antiques Roadshow*  
1:00 3-1 *Independent Lens "Optimists"*  
2:00 3-1 *Global Health Frontiers*  
3:00 3-1 *Natural Heroes*  
3:30 3-1 *In Pursuit of Passion*  
4:00 3-1 *Consuelo Mack WealthTrack*  
4:30 3-1 *Scully/The World Show*  
5:00 3-1 *Report from Santa Fe*

5:30 3-1 *Nightly Business Report*  
6:00 3-1 *PBS NewsHour*

**7:00 America's Wild West**  
3-1 *Mavericks: In Time*

**8:30 Heart 411**  
3-1 *Great Performances "Bob Dylan"*

9:00 3-3 *Charlie Rose*

**10:00 Easy Yoga: The Secret to Stretch and Balance with Peggy Cappy**  
3-3 *Civilization: The West and the Rest, Pt. 2*  
10:30 3-1 *Charlie Rose*

**11:00 Charlie Rose**

**11:30 Tavis Smiley**

**12:00 PBS NewsHour**  
3-1 *Program About Unusual Buildings*  
3-3 *Jewish Soldiers in Blue & Gray*

## Wednesday 12th

5:00 3-1 *Classical Stretch*  
5:30 3-1 *Wai Lana Yoga*  
6:00 3-1 *Civilization: The West and the Rest*  
8:00 3-1 *Jewish Soldiers in Blue & Gray*  
9:00 3-1 *Family Travel*  
9:30 3-1 *This American Land*  
10:00 3-1 *Rough Cut – Woodworking*  
10:30 3-1 *Woodturning Workshop*  
11:00 3-1 *POV "Light in Her Eyes"*  
12:00 3-1 *Civilization: The West and the Rest*  
2:00 3-1 *Jewish Soldiers in Blue & Gray*  
3:00 3-1 *Julia and Jacques Cooking*  
3:30 3-1 *Christina*  
4:00 3-1 *Growing a Greener World*  
4:30 3-1 *POV "Light in Her Eyes"*  
5:30 3-1 *Nightly Business Report*  
6:00 3-1 *PBS NewsHour*

**7:00 60s Pop, Rock & Soul**  
3-1 *Blood Sugar Solution 10-Day Detox Diet*  
8:30 3-1 *Heal Yourself: Mind Over Medicine*

**9:00 Moments to Remember**  
3-3 *Charlie Rose*  
10:00 3-1 *Charlie Rose*  
3-3 *Nature*  
11:00 3-1 *Tavis Smiley*  
3-3 *Nova*

**11:30 Charlie Rose**

**11:57 Star Gazers**  
12:00 3-1 *Nature*  
3-3 *Life on Fire*

**12:30 PBS NewsHour**

## Thursday 13th

5:00 3-1 *Classical Stretch*  
5:30 3-1 *Wai Lana Yoga*  
6:00 3-1 *Moyers & Company*  
6:30 3-1 *Charlie Rose: The Week*  
7:00 3-1 *Nature*  
8:00 3-1 *Nova*  
9:00 3-1 *Fons & Porter's Quilting*  
9:30 3-1 *Quilt in a Day*  
10:00 3-1 *Knit and Crochet Now!*  
10:30 3-1 *Sew it All*  
11:00 3-1 *Makers: Women Who Make America*  
12:00 3-1 *Nature*  
1:00 3-1 *Nova*  
2:00 3-1 *Life on Fire*  
3:00 3-1 *In the Americas with David Yetman*  
3:30 3-1 *Visionaries*  
4:00 3-1 *Closer to Truth*  
4:30 3-1 *Makers: Women Who Make America*  
5:30 3-1 *Nightly Business Report*  
6:00 3-1 *PBS NewsHour*

**7:00 Heartbeat of Home**  
3-1 *Celebration of Blues & Soul*

**8:30** 3-1 *Gentleman's Rule in Concert*

**9:00 60s Girl Grooves**  
3-3 *Charlie Rose*

**10:00** 3-1 *Charlie Rose*  
3-3 *Moyers & Company*

**10:30** 3-3 *Scully/The World Show*

**11:00 Charlie Rose**  
3-1 *Tavis Smiley*  
3-3 *POV "Light in Her Eyes"*

**12:00 PBS NewsHour**  
3-1 *This Old House Hour*  
3-3 *War Zone/Comfort Zone*

## Friday 14th

**5:00** 3-1 *Classical Stretch*

**5:30** 3-1 *Wai Lana Yoga*

**6:00** 3-1 *Arts in Context*

**6:30** 3-1 *Jammin' at Hippie Jack's*

**7:00** 3-1 *Song of the Mountains*

**8:00** 3-1 *This Old House Hour*

**9:00** 3-1 *Globe Trekker*

**10:00** 3-1 *Joy of Painting*

**10:30** 3-1 *Paint This with Jerry Yarnell*

**11:00** 3-1 *Gary Spetz's Painting Wild Places*

**11:30** 3-1 *Welcome to My Studio*

**12:00** 3-1 *Jubilee*  
1:00 3-1 *Sun Studio Sessions*  
1:30 3-1 *Built to Last*  
2:00 3-1 *This Old House Hour*  
3:00 3-1 *Globe Trekker*  
4:00 3-1 *Just Seen It*  
4:30 3-1 *Moyers & Company*  
5:00 3-1 *European Journal*  
5:30 3-1 *Nightly Business Report*  
6:00 3-1 *PBS NewsHour*

**7:00 Market to Market**  
3-1 *Titanic – Band of Courage*

**7:30 Consuelo Mack WealthTrack**

**8:00 Washington Week**

**8:30 Great Performances**  
"Dukes of September"  
3-1 *Inspector George Gently*

**9:00** 3-3 *Charlie Rose*

**10:00** 3-1 *Charlie Rose*  
3-3 *POV "Light in Her Eyes"*

**10:30 Inspector George Gently**  
"Peace and Love"  
11:00 3-1 *Tavis Smiley*  
3-3 *Makers: Women Who Make America*

**12:00 PBS NewsHour**  
3-1 *Washington Week*  
3-3 *Nature*

## Saturday 15th

**6:00 Woodturning Workshop** "Rolling Pin"

**6:30 American Woodshop**  
"Philadelphia Ball and Claw Armchair"

**7:00 Woodsmith Shop**  
"Book Rack and Mantel Clock"

**7:30 Savor the Southwest** "Tamales"

**8:00 America's Test Kitchen**  
"Three Ways with Eggs"

**8:30 Taste of History** "Philadelphia Falls"

**9:00 Pati's Mexican Table** "Mexitalian!"

**9:30 Motorweek**

**10:00 P. Allen Smith's Garden Home**  
"Making a Difference"  
3-1 *This Old House Hour*

**10:30 Victory Garden** "Light Up Your Garden"

**10:57 Star Gazers**

**11:00 Paint This with Jerry Yarnell**  
"A Bluebird's Paradise, Pt. 3"  
3-1 *Julia Child – Cooking with Master Chefs*

**11:30 Joy of Painting** "Ebb Tide"  
3-1 *Victory Garden*

**12:00 Beauty of Oil Painting**  
"Springtime Poppies"  
3-1 *This Old House*

**12:30 Quilt in a Day** "Finishing"  
3-1 *This Old House*

**1:00 Quilting Arts** "Modern Quilting Meets Folk Art"  
3-1 *Ask This Old House*

**1:30 Fons & Porter's Love of Quilting**  
"Anniversary Memories"  
3-1 *Hometime*

**2:00 Creative Living**  
3-1 *Woodwright's Shop*

**2:30 Rick Steves' Italy: Cities of Dreams**  
3-1 *Healing ADD with Dr. Daniel Amen*

**4:00** 3-1 *History Detectives*

**4:30 Heart 411**  
5:00 3-1 *PBS NewsHour Weekend*  
5:30 3-1 *Charlie Rose: The Week*

**6:00 Report from Santa Fe**  
3-1 *Rick Steves' Italy: Cities of Dreams*

**6:30 Under the Streetlamp: Let the Good Times Roll**

**8:00 Celebration of Blues & Soul**  
3-1 *Celtic Woman: Emerald*

**9:00** 3-3 *Lawrence Welk Show*

**9:30 Mavericks: In Time**

**10:00** 3-1 *Austin City Limits*  
3-3 *Classic Gospel*

**11:00 Nature** "Survivors of the Firestorm"  
3-1 *Nature*  
3-3 *Music City Roots: Live from the Loveless Cafe*

**11:57 Star Gazers**

**12:00 Austin City Limits**  
3-1 *Nova*  
3-3 *Live from the Artists Den*

## Sunday 16th

**6:00 Smart Travels** "Florence"

**6:30 Second Opinion** "Conversion Disorder"

**7:00 Antiques Roadshow** "El Paso, TX, Pt. 1"

**8:00 Classic Gospel** "Hymns"

**9:00 Dr. Wayne Dyer: I Can See Clearly Now**

**12:00 Ed Slott's Retirement Rescue!**  
12:30 3-1 *Washington Week*  
1:00 3-1 *Charlie Rose: The Week*

**1:30 Deepak Chopra: What Are You Hungry For?**  
3-1 *Market to Market*

**2:00** 3-1 *Religion & Ethics Newsweekly*

**2:30** 3-1 *Ask This Old House*

**3:00 Easy Yoga: The Secret to Strength and Balance with Peggy Cappy**  
3-1 *Life on Fire*

**3:30 Religion & Ethics Newsweekly**

**4:00 Classic Gospel**  
"Down by the Tabernacle"  
3-1 *Nova*

**5:00 Gentleman's Rule in Concert**  
3-1 *PBS NewsHour Weekend*

**5:30** 3-1 *Washington Week*

**6:00** 3-1 *Nature "Ireland's Wild River"*

**6:30 David Arkenstone's Symphonic Adventure**  
7:30 3-1 *Rick Steves' Festive Europe*

**8:00 Masterpiece Sneak Preview:**  
"Mr. Selfridge II"  
3-1 *Great Performances "Steve Martin"*

**9:00 Celtic Woman: Emerald**  
3-3 *Well Read*

**9:30** 3-3 *Start Up*

**10:00** 3-1 *Masterpiece Classic "Selfridge, Pt. 4"*  
3-3 *Celtic Tenors: No Boundaries*

**11:00 Super Skyscrapers** "Building the Future"  
3-1 *Masterpiece Classic "Selfridge, Pt. 5"*  
3-3 *Masterpiece Classic "Selfridge, Pt. 4"*

**12:00 Nova** "Crash of Flight 447"  
3-1 *Masterpiece Classic "Selfridge, Pt. 6"*  
3-3 *Masterpiece Classic "Selfridge, Pt. 5"*

## Monday 17th

**5:00** 3-1 *Classical Stretch*

**5:30** 3-1 *Wai Lana Yoga*

**6:00** 3-1 *Nature*

**7:00** 3-1 *Masterpiece Classic "Selfridge, Pt. 4"*

**8:00** 3-1 *Masterpiece Classic "Selfridge, Pt. 5"*

**9:00** 3-1 *Taste of History*

**9:30** 3-1 *Cook's Country*

**10:00** 3-1 *In Pursuit of Passion*

**10:30** 3-1 *P. Allen Smith's Garden Home*

**11:00** 3-1 *Celtic Tenors: No Boundaries*

**12:00** 3-1 *Bitter Seeds*  
1:00 3-1 *Masterpiece Classic "Selfridge, Pt. 4"*  
2:00 3-1 *Masterpiece Classic "Selfridge, Pt. 5"*  
3:00 3-1 *Travel Detective*  
3:30 3-1 *All Aboard*  
4:00 3-1 *America's Heartland*  
4:30 3-1 *Celtic Tenors: No Boundaries*  
5:30 3-1 *Nightly Business Report*  
6:00 3-1 *PBS NewsHour*

**7:00 Antiques Roadshow** "El Paso, TX, Pt. 2"  
3-1 *Antiques Roadshow*

**8:00 Antiques Roadshow** "El Paso, TX, Pt. 3"  
3-1 *Independent Lens "Pushing the Elephant"*

**9:00 First Freedom: The Fight for Religious Liberty**  
3-3 *Charlie Rose*

**9:30** 3-1 *Nature's Invitation*

**10:00** 3-1 *Charlie Rose*  
3-3 *Antiques Roadshow*

**10:30 In Pursuit of Passion** "White Turf – St. Moritz, Switzerland"

**11:00 Antiques Roadshow**  
3-1 *Tavis Smiley*  
3-3 *Independent Lens "Pushing the Elephant"*

**11:57 Star Gazers**

**12:00 PBS NewsHour**  
3-1 *Antiques Roadshow*

## Tuesday 18th

**5:00** 3-1 *Classical Stretch*

**5:30** 3-1 *Wai Lana Yoga*

**6:00** 3-1 *Antiques Roadshow*

**7:00** 3-1 *Independent Lens "Pushing the Elephant"*

**8:30** 3-1 *Driven to Ride*

**9:00** 3-1 *Healthy Body Healthy Mind*

**9:30** 3-1 *Second Opinion*

**10:00** 3-1 *Closer to Truth*

**10:30** 3-1 *Religion & Ethics Newsweekly*

**11:00** 3-1 *Song of the Mountains*

**12:00** 3-1 *Antiques Roadshow*

**1:00** 3-1 *Independent Lens "Pushing the Elephant"*

**2:30** 3-1 *Driven to Ride*

**3:00** 3-1 *Natural Heroes*

**3:30** 3-1 *In Pursuit of Passion*

**4:00** 3-1 *Consuelo Mack WealthTrack*

**4:30** 3-1 *Scully/The World Show*

**5:00** 3-1 *Report from Santa Fe*



## Saturday 22nd

- 5:30 3-1 *Nightly Business Report*  
6:00 3-1 *PBS NewsHour*  
7:00 **American Experience** "1964"  
3-1 *Remembering the Sirens*  
8:00 3-1 *Naked Option*  
9:00 **You Should Know**  
3-1 *Frontline*  
3-3 *Charlie Rose*  
9:30 **Creative Living**  
10:00 **Frontline** "Rape in the Fields"  
3-1 *Charlie Rose*  
3-3 *Israel: The Royal Tour*  
11:00 **Charlie Rose**  
3-1 *Tavis Smiley*  
3-3 *Evolution of the Nation of Islam*  
12:00 **PBS NewsHour**  
3-1 *Amer. Exp.: 1964*  
3-3 *Lord is Not on Trial Here*

## Wednesday 19th

- 5:00 3-1 *Classical Stretch*  
5:30 3-1 *Wai Lana Yoga*  
6:00 3-1 *Israel: The Royal Tour*  
7:00 3-1 *Evolution of the Nation of Islam*  
8:00 3-1 *Lord is Not on Trial Here*  
9:00 3-1 *Family Travel*  
9:30 3-1 *Travel with Kids*  
10:00 3-1 *Rough Cut — Woodworking*  
10:30 3-1 *Woodturning Workshop*  
11:00 3-1 *POV "The World Before Her"*  
12:00 3-1 *Israel: The Royal Tour*  
1:00 3-1 *Evolution of the National of Islam*  
2:00 3-1 *Lord is Not on Trial Here*  
3:00 3-1 *Julia and Jacques Cooking*  
3:30 3-1 *Christina*  
4:00 3-1 *Ecosense for Living*  
4:30 3-1 *POV "The World Before Her"*  
5:30 3-1 *Nightly Business Report*  
6:00 3-1 *PBS NewsHour*  
7:00 **Nature** "Frogs: The Thin Green Line"  
3-1 *Nature*  
8:00 **Nova** "Venom: Nature's Killer"  
3-1 *Nova*  
9:00 **Preparing for Disaster: Starting Now**  
3-1 *Skeletons of the Sahara*  
3-3 *Charlie Rose*  
10:00 **Healthy Body Healthy Mind**  
"Advances in Treating Colon Cancer with Surgery"  
3-1 *Charlie Rose*  
3-3 *Nature*  
10:30 **This Old House**  
11:00 **Charlie Rose**  
3-1 *Tavis Smiley*  
3-3 *Nova*  
11:57 **Star Gazers**  
12:00 **PBS NewsHour**  
3-1 *Nature*  
3-3 *Skeletons of the Sahara*

## Thursday 20th

- 5:00 3-1 *Classical Stretch*  
5:30 3-1 *Wai Lana Yoga*  
6:00 3-1 *Moyers & Company*  
6:30 3-1 *Charlie Rose: The Week*  
7:00 3-1 *Nature*  
8:00 3-1 *Nova*  
9:00 3-1 *Fons & Porter's Quilting*  
9:30 3-1 *Quilt in a Day*  
10:00 3-1 *Knit and Crochet Now!*  
10:30 3-1 *Sew it All*  
11:00 3-1 *Makers: Women Who Make America*  
12:00 3-1 *Nature*

- 1:00 3-1 *Nova*  
2:00 3-1 *Skeletons of the Sahara*  
3:00 3-1 *In the Americas*  
3:30 3-1 *Visionaries*  
4:00 3-1 *Closer to Truth*  
4:30 3-1 *Makers: Women Who Make America*  
5:30 3-1 *Nightly Business Report*  
6:00 3-1 *PBS NewsHour*  
7:00 **Frontline** "Rape in the Fields"  
3-1 *Song of the Mountains*  
8:00 **Song of the Mountains**  
3-1 *Red Green Show*  
8:30 3-1 *Sportslook*  
9:00 **Sportslook**  
3-1 *Creative Living*  
3-3 *Charlie Rose*  
9:30 **Red Green Show** "Trout Season"  
3-1 *You Should Know*  
10:00 **Jubilee** "Sam Bush and Friends"  
3-1 *Charlie Rose*  
3-3 *Moyers & Company*  
10:30 3-3 *Scully/The World Show*  
11:00 **Charlie Rose**  
3-1 *Tavis Smiley*  
3-3 *Frontline*  
12:00 **PBS NewsHour**  
3-1 *This Old House Hour*  
3-3 *Celtic Tenors: No Boundaries*

## Friday 21st

- 5:00 3-1 *Classical Stretch*  
5:30 3-1 *Wai Lana Yoga*  
6:00 3-1 *Arts in Context*  
6:30 3-1 *Jammin' at Hippie Jack's*  
7:00 3-1 *Song of the Mountains*  
8:00 3-1 *This Old House Hour*  
9:00 3-1 *Globe Trekker*  
10:00 3-1 *Joy of Painting*  
10:30 3-1 *Paint This with Jerry Yarnell*  
11:00 3-1 *Gary Spetz's Painting Wild Places*  
11:30 3-1 *Welcome to My Studio*  
12:00 3-1 *Jubilee*  
1:00 3-1 *Sun Studio Sessions*  
1:30 3-1 *Built to Last*  
2:00 3-1 *This Old House Hour*  
3:00 3-1 *Globe Trekker*  
4:00 3-1 *Just Seen It*  
4:30 3-1 *Moyers & Company*  
5:00 3-1 *European Journal*  
5:30 3-1 *Nightly Business Report*  
6:00 3-1 *PBS NewsHour*  
7:00 **Market to Market**  
3-1 *Washington Week*  
7:30 **Consuelo Mack WealthTrack**  
3-1 *Charlie Rose: The Week*  
8:00 **Washington Week**  
3-1 *Inspector George Gently*  
8:30 **Charlie Rose: The Week**  
9:00 **Soap Myth**  
3-3 *Charlie Rose*  
3-1 *Vintage*  
9:30 3-1 *Charlie Rose*  
3-3 *Frontline*  
10:00 3-1 *Charlie Rose*  
3-3 *Frontline*  
10:30 **Inspector George Gently**  
"Gently Upside Down"  
3-1 *Tavis Smiley*  
3-3 *Makers: Women Who Make America*  
12:00 **PBS NewsHour**  
3-1 *Washington Week*  
3-3 *Nature*

- 6:00 **Woodturning Workshop** "Shop Stool"  
6:30 **American Woodshop** "Turned Stools & Candle Stands"  
7:00 **Woodsmith Shop** "5 Cool Tools"  
7:30 **Savor the Southwest**  
"Tortillas in Everything"  
8:00 **America's Test Kitchen**  
"Simple & Satisfying Vegetable Mains"  
8:30 **Taste of History** "Continental Congress & Constitutional Convention"  
9:00 **Pati's Mexican Table**  
"Girls Just Wanna Have Fun"  
9:30 **Motorweek**  
10:00 **P. Allen Smith's Garden Home**  
"Going Mini"  
3-1 *This Old House Hour*  
10:30 **Victory Garden's Edible Feast**  
10:57 **Star Gazers**  
11:00 **Paint This with Jerry Yarnell**  
"A Bluebird's Paradise, Pt. 4"  
3-1 *Julia Child — Cooking with Master Chefs*  
11:30 **Joy of Painting** "Secluded Forest"  
3-1 *Victory Garden*  
12:00 **Beauty of Oil Painting**  
"Romantic Soft Focus Tea Rose"  
3-1 *This Old House*  
12:30 **Quilt in a Day** "Women Who Taught Us to Sew"  
3-1 *This Old House*  
1:00 **Quilting Arts** "Quilting Simplified"  
3-1 *Ask This Old House*  
1:30 **Fons & Porter's Love of Quilting**  
"Emily's Wedding Quilt"  
3-1 *Hometime*  
2:00 **Creative Living**  
3-1 *Woodwright's Shop*  
2:30 **Joanne Weir's Cooking Class**  
"Asparagus Puffs & Lamb Skewers with Warm Fava Salad"  
3-1 *Motorweek*  
3:00 **Hometime** "Creekside Home Surfaces"  
3-1 *Martha Stewart's Cooking School*  
3:30 **This Old House** "Arlington Italianate Project 2014/Water Line"  
3-1 *Martha Bakes*  
4:00 **Ask This Old House** Planting a low-cost privacy screen; seals ductwork from the inside  
3-1 *History Detectives*  
4:30 **Welcome to My Studio**  
"Cadmium Orange"  
5:00 **Sewing with Nancy**  
"Fearless Quilting Finishes"  
3-1 *PBS NewsHour Weekend*  
5:30 **Sew it All** "Troubleshooting Tips"  
3-1 *Charlie Rose: The Week*  
6:00 **Report from Santa Fe**  
3-1 *Antiques Roadshow*  
6:30 **America's Heartland**  
7:00 **Lawrence Welk Show** "Spring"  
3-1 *American Masters "Lennon NYC"*  
8:00 **Are You Being Served?** "Apartment"  
8:30 **Are You Being Served?** "Senior Person"  
9:00 **Austin City Limits** "Esperanza Spalding"  
3-1 *Ferrets: The Pursuit of Excellence*  
3-3 *Lawrence Welk Show*  
10:00 **Nova** "Venom: Nature's Killer"  
3-1 *Austin City Limits*  
3-3 *Classic Gospel*  
11:00 **Nature** "Frogs: The Thin Green Line"  
3-1 *Nature*  
3-3 *Music City Roots*

11:57 **Star Gazers**  
12:00 **Austin City Limits**  
3-1 *Nova*  
3-3 *Live from the Artists Den*

## Sunday 23rd

6:00 **Smart Travels**  
"Hill Towns of Tuscany and Umbria"  
6:30 **Second Opinion** "Lyme Disease"  
7:00 **Antiques Roadshow** "El Paso, TX, Pt. 2"  
8:00 **Classic Gospel** "Pure & Simple, Pt. 1"  
9:00 **Joy of Music** "Switzerland"  
9:30 **Joy of Music**  
"Musical Visit to Seoul, Korea"  
10:00 **Hawking**  
11:00 **Globe Trekker** "Caribbean Islands"  
12:00 **Cultura**  
12:30 **In Focus**  
3-1 *Washington Week*  
1:00 3-1 *Charlie Rose: The Week*  
1:30 **All Aboard** "East Broad Top"  
3-1 *Market to Market*  
2:00 **Closer to Truth** "Are Brains and Mind the Same Thing?"  
3-1 *Religion & Ethics Newsweekly*  
2:30 **Well Read** "Guy Gavriel Kay, "River of Stars"  
3-1 *Ask This Old House*  
3:00 **Healthy Body Healthy Mind**  
"Conquering Advanced Prostate Cancer"  
3-1 *Skeletons of the Sahara*  
3:30 **Religion & Ethics Newsweekly**  
4:00 **Classic Gospel**  
"Tribute to the Goodmans"  
3-1 *Nova*  
5:00 **Great Performances at the Met**  
"Eugene Onegin"  
3-1 *PBS NewsHour Weekend*  
5:30 3-1 *Washington Week*  
6:00 3-1 *Nature*  
7:00 3-1 *Masterpiece Classic "Selfridge, Pt. 7"*  
8:00 **Inspector George Gently**  
"Goodbye China"  
3-1 *Masterpiece Classic "Selfridge, Pt. 8"*  
9:00 3-3 *Well Read*  
9:30 **Soap Myth**  
3-3 *Start Up*  
10:00 3-1 *Austin City Limits*  
3-3 *Augusta's Master Plan*  
11:00 **Super Skyscrapers** "The Vertical City"  
3-1 *Secrets of the Tower of London*  
3-3 *Masterpiece Classic "Selfridge, Pt. 6"*  
12:00 **Nova** "Venom: Nature's Killer"  
3-1 *Masterpiece Classic "Selfridge, Pt. 8"*  
3-3 *Masterpiece Classic "Selfridge, Pt. 7"*

## Monday 24th

5:00 3-1 *Classical Stretch*  
5:30 3-1 *Wai Lana Yoga*  
6:00 3-1 *Nature*  
7:00 3-1 *Masterpiece Classic "Selfridge, Pt. 6"*  
8:00 3-1 *Masterpiece Classic "Selfridge, Pt. 7"*  
9:00 3-1 *Taste of History*  
9:30 3-1 *Cook's Country*  
10:00 3-1 *In Pursuit of Passion*  
10:30 3-1 *P. Allen Smith's Garden Home*  
11:00 3-1 *Augusta's Master Plan*  
12:00 3-1 *Preparing for Disaster: Starting Now*  
1:00 3-1 *Masterpiece Classic "Selfridge, Pt. 6"*  
2:00 3-1 *Masterpiece Classic "Selfridge, Pt. 7"*  
3:00 3-1 *Travel Detective*  
3:30 3-1 *All Aboard*  
4:00 3-1 *America's Heartland*  
4:30 3-1 *Augusta's Master Plan*

5:30 3-1 *Nightly Business Report*  
6:00 3-1 *PBS NewsHour*  
7:00 **Antiques Roadshow**  
"Baton Rouge, LA, Pt. 3"  
3-1 *Antiques Roadshow*  
8:00 **Antiques Roadshow** "Atlanta, GA, Pt. 1"  
3-1 *Independent Lens "All of Me"*  
9:00 **Independent Lens**  
"All of Me: A Story of Love"  
3-1 *POV "Up Heartbreak Hill"*  
3-3 *Charlie Rose*  
10:00 **All Aboard** "Suwanee 1218"  
3-1 *Charlie Rose*  
3-3 *Antiques Roadshow*  
10:30 **Travel Detective** "The Truth About Frequent-Flyer Programs"  
11:00 **Antiques Roadshow**  
3-1 *Tavis Smiley*  
3-3 *Independent Lens "All of Me"*  
11:57 **Star Gazers**  
12:00 **PBS NewsHour**  
3-1 *Antiques Roadshow*  
3-3 *Civic Summit: Obesity, Weight Loss and Body Acceptance*

## Tuesday 25th

5:00 3-1 *Classical Stretch*  
5:30 3-1 *Wai Lana Yoga*  
6:00 3-1 *Antiques Roadshow*  
7:00 3-1 *Independent Lens "All of Me..."*  
8:00 3-1 *Civic Summit: Obesity, Weight Loss and Body Acceptance*  
9:00 3-1 *Healthy Body Healthy Mind*  
9:30 3-1 *Second Opinion*  
10:00 3-1 *Closer to Truth*  
10:30 3-1 *Religion & Ethics Newsweekly*  
11:00 3-1 *Song of the Mountains*  
12:00 3-1 *Antiques Roadshow*  
1:00 3-1 *Independent Lens "All of Me..."*  
2:00 3-1 *Civic Summit: Obesity, Weight Loss and Body Acceptance*  
3:00 3-1 *Natural Heroes*  
3:30 3-1 *In Pursuit of Passion*  
4:00 3-1 *Consuelo Mack WealthTrack*  
4:30 3-1 *Scully/The World Show*  
5:00 3-1 *Report from Santa Fe*  
5:30 3-1 *Nightly Business Report*  
6:00 3-1 *PBS NewsHour*  
7:00 **Story of the Jews** "The Beginning"  
3-1 *Story of the Jews, Pt. 1*  
8:00 **Story of the Jews** "Among Believers"  
3-1 *Story of the Jews, Pt. 2*  
9:00 **You Should Know**  
3-1 *Frontline*  
3-3 *Charlie Rose*  
9:30 **Creative Living**  
10:00 **Frontline** "TB Silent Killer"  
3-1 *Charlie Rose*  
3-3 *Story of the Jews, Pt. 1*  
11:00 **Charlie Rose**  
3-1 *Tavis Smiley*  
3-3 *Story of the Jews, Pt. 2*  
12:00 **PBS NewsHour**  
3-1 *Story of the Jews "The Beginning"*  
3-3 *Railroad Man ...Jay Gould*

## Wednesday 26th

5:00 3-1 *Classical Stretch*  
5:30 3-1 *Wai Lana Yoga*  
6:00 3-1 *Story of the Jews, Pt. 1*  
7:00 3-1 *Story of the Jews, Pt. 2*  
8:00 3-1 *Railroad Man: The Life and Legend of Jay Gould*  
9:00 3-1 *Family Travel*

9:30 3-1 *Travel with Kids*  
10:00 3-1 *Rough Cut — Woodworking*  
10:30 3-1 *Woodturning Workshop*  
11:00 3-1 *Frontline*  
12:00 3-1 *Story of the Jews "The Beginning"*  
1:00 3-1 *Story of the Jews "Among Believers"*  
2:00 3-1 *Railroad Man ...Jay Gould*  
3:00 3-1 *Cooking 80/20 with Robin Shea*  
3:30 3-1 *Christina*  
4:00 3-1 *Ecosense for Living*  
4:30 3-1 *Frontline*  
5:30 3-1 *Nightly Business Report*  
6:00 3-1 *PBS NewsHour*  
7:00 **Nature** "What Plants Talk About"  
3-1 *Nature*  
8:00 **Nova** "Cold Case JFK"  
3-1 *Nova*  
9:00 **Secrets of the Dead**  
"The Lost Diary of Dr. Livingstone"  
3-1 *Secrets of the Dead*  
3-3 *Charlie Rose*  
10:00 **Healthy Body Healthy Mind**  
"Epilepsy: Solving the Mystery"  
3-1 *Charlie Rose*  
3-3 *Nature*  
10:30 **This Old House**  
11:00 **Charlie Rose**  
3-1 *Tavis Smiley*  
3-3 *Nova*  
11:57 **Star Gazers**  
12:00 **PBS NewsHour**  
3-1 *Nature*  
3-3 *Secrets of the Dead*

## Thursday 27th

5:00 3-1 *Classical Stretch*  
5:30 3-1 *Wai Lana Yoga*  
6:00 3-1 *Moyers & Company*  
6:30 3-1 *Charlie Rose: The Week*  
7:00 3-1 *Nature*  
8:00 3-1 *Nova*  
9:00 3-1 *Fons & Porter's Quilting*  
9:30 3-1 *Quilt in a Day*  
10:00 3-1 *Knit and Crochet Now!*  
10:30 3-1 *Sew it All*  
11:00 3-1 *Makers: Women Who Make America*  
12:00 3-1 *Nature*  
1:00 3-1 *Nova*  
2:00 3-1 *Secrets of the Dead*  
3:00 3-1 *In the Americas*  
3:30 3-1 *Visionaries*  
4:00 3-1 *Closer to Truth*  
4:30 3-1 *Makers: Women Who Make America*  
5:30 3-1 *Nightly Business Report*  
6:00 3-1 *PBS NewsHour*  
7:00 **Frontline** "TB Silent Killer"  
3-1 *Song of the Mountains*  
8:00 **Song of the Mountains**  
3-1 *Red Green Show*  
8:30 3-1 *Sportslook*  
9:00 **Sportslook**  
3-1 *Creative Living*  
3-3 *Charlie Rose*  
9:30 **Red Green Show**  
"The Lost Dog"  
3-1 *You Should Know*  
10:00 **Jubilee** "Best of the 2011 International Newgrass Festival"  
3-1 *Charlie Rose*  
3-3 *Moyers & Company*  
10:30 3-3 *Scully/The World Show*



- 11:00 Charlie Rose**  
3-1 *Tavis Smiley*  
3-3 *Frontline*
- 12:00 PBS NewsHour**  
3-1 *This Old House Hour*  
3-3 *Bird Tales*

## Friday 28th

- 5:00 3-1 *Classical Stretch*  
5:30 3-1 *Wai Lana Yoga*  
6:00 3-1 *Arts in Context*  
6:30 3-1 *Jammin' at Hippie Jack's*  
7:00 3-1 *Song of the Mountains*  
8:00 3-1 *This Old House Hour*  
9:00 3-1 *Globe Trekker*  
10:00 3-1 *Joy of Painting*  
10:30 3-1 *Paint This with Jerry Yarnell*  
11:00 3-1 *Gary Spetz's Painting Wild Places*  
11:30 3-1 *Welcome to My Studio*  
12:00 3-1 *Jubilee*  
1:00 3-1 *Sun Studio Sessions*  
1:30 3-1 *Built to Last*  
2:00 3-1 *This Old House Hour*  
3:00 3-1 *Globe Trekker*  
4:00 3-1 *Just Seen It*  
4:30 3-1 *Moyers & Company*  
5:00 3-1 *European Journal*  
5:30 3-1 *Nightly Business Report*  
6:00 3-1 *PBS NewsHour*  
**7:00 Market to Market**  
3-1 *Washington Week*  
**7:30 Consuelo Mack WealthTrack**  
3-1 *Charlie Rose: The Week*  
**8:00 Washington Week**  
3-1 *Inspector George Gently*  
**8:30 Charlie Rose: The Week**  
**9:00 Live From Lincoln Center "Patina Miller"**  
3-3 *Charlie Rose*  
9:30 3-1 *Vintage*  
**10:00 Inspector George Gently**  
"Goodbye China"  
3-1 *Charlie Rose*  
3-3 *Frontline*  
11:00 3-1 *Tavis Smiley*  
3-3 *Makers: Women Who Make America*  
**11:30 Film School Shorts "Risky Business"**  
**12:00 PBS NewsHour**  
3-1 *Washington Week*  
3-3 *Nature*

## Saturday 29th

- 6:00 Woodturning Workshop**  
"Holiday Bell"
- 6:30 American Woodshop**  
"1930 Relief Accented Desk"
- 7:00 Woodsmith Shop**  
"Modular Wine Server"
- 7:30 Cooking 80/20 with Robin Shea**  
"Farmer's Market Day"
- 8:00 America's Test Kitchen**  
"Revisiting Julia Child's Roast Turkey"
- 8:30 Taste of History "Weekend Warriors"**
- 9:00 Pati's Mexican Table "Pinata Party"**
- 9:30 Motorweek**
- 10:00 P. Allen Smith's Garden Home**  
"Embracing the Backyard"  
3-1 *This Old House Hour*
- 10:30 Victory Garden's Edible Feast**
- 10:57 Star Gazers**
- 11:00 Paint This with Jerry Yarnell**  
"A Bluebird's Paradise, Pt. 5"  
3-1 *Julia Child - Cooking with Master Chefs*

- 11:30 Joy of Painting "Desert Hues"**  
3-1 *Victory Garden's Edible Feast*
- 12:00 Beauty of Oil Painting "Hibiscus"**  
3-1 *This Old House*
- 12:30 Quilt in a Day "Women Who Taught Us to Sew, Pt. 2"**  
3-1 *This Old House*
- 1:00 Quilting Arts "Individual Approaches to Quilting"**  
3-1 *Ask This Old House*
- 1:30 Fons & Porter's Love of Quilting**  
"What Do I Quilt on My Quilt?"  
3-1 *Hometime*
- 2:00 Creative Living**  
3-1 *Woodwright's Shop*
- 2:30 Joanne Weir's Cooking Class**  
"Cherry Tomato Pizza & Fennel Arugula Salad"  
3-1 *Motorweek*
- 3:00 Hometime "Creekside Home Yardscapes"**  
3-1 *Martha Stewart's Cooking School*
- 3:30 This Old House "Arlington Italianate Project 2014/Brick, Trim"**  
3-1 *Martha Bakes*
- 4:00 Ask This Old House** Patching a hole in baseboards; maintaining a lawn mower  
3-1 *History Detectives*
- 4:30 Welcome to My Studio "Cadmium Red Light"**
- 5:00 Sewing with Nancy**  
"Fearless Quilting Finishes, Pt. 2"  
3-1 *PBS NewsHour Weekend*
- 5:30 Sew it All "Deco-Stitched Décor"**  
3-1 *Charlie Rose: The Week*
- 6:00 Report from Santa Fe**  
3-1 *Antiques Roadshow*
- 6:30 America's Heartland**
- 7:00 Lawrence Welk Show**  
"Springtime in the Rockies"  
3-1 *Live From Lincoln Center "Patina Miller"*
- 8:00 Are You Being Served "Hero"**  
3-1 *10 Buildings that Changed America*
- 8:30 Are You Being Served?**  
"Anything You Can Do"
- 9:00 Austin City Limits "Bonnie Raitt/Mavis Staples"**  
3-1 *Bletchley Circle, Pt. 1*  
3-3 *Lawrence Welk Show*
- 10:00 Nova "Cold Case JFK"**  
3-1 *Austin City Limits*  
3-3 *Classic Gospel*
- 11:00 Nature "What Plants Talk About"**  
3-1 *Nature*  
3-3 *Music City Roots*

- 11:57 Star Gazers**
- 12:00 Austin City Limits**  
3-1 *Nova*  
3-3 *Live from the Artists Den*

## Sunday 30th

- 6:00 Smart Travels "Provence"**
- 6:30 Second Opinion "Shingles"**
- 7:00 Antiques Roadshow "El Paso, TX, Pt. 3"**
- 8:00 Classic Gospel**  
"Pure & Simple, Pt. 2"
- 9:00 Joy of Music "Diane Bish in Concert"**
- 9:30 Joy of Music "Baton Rouge"**
- 10:00 Secrets of the Dead "The Lost Diary of Dr. Livingstone"**
- 11:00 Globe Trekker "Mozambique"**
- 12:00 Aviators**
- 12:30 In Focus**  
3-1 *Washington Week*  
1:00 3-1 *Charlie Rose: The Week*

- 1:30 All Aboard "Suwanee 1218"**  
3-1 *Market to Market*
- 2:00 Closer to Truth "Diverse Arguments for God"**  
3-1 *Religion & Ethics Newsweekly*
- 2:30 Well Read "Christa Parravani, Her"**  
3-1 *Ask This Old House*
- 3:00 Healthy Body Healthy Mind**  
"Cochlear Implants: Bringing Back the Joy of Sound"  
3-1 *Secrets of the Dead*
- 3:30 Religion & Ethics Newsweekly**
- 4:00 Classic Gospel "Hymns"**  
3-1 *Nova*
- 5:00 PBS NewsHour Weekend**  
3-1 *PBS NewsHour Weekend*
- 5:30 McLaughlin Group**  
3-1 *Washington Week*
- 6:00 Moyers & Company**  
3-1 *Nature*
- 6:30 Biocentury This Week**
- 7:00 Call the Midwife III, Pt. 1**  
3-1 *Call the Midwife III, Pt. 1*
- 8:00 Masterpiece Classic**  
"Mr. Selfridge Season 2, Pt. 1"  
3-1 *Masterpiece Classic, "Selfridge II, Pt. 1"*  
9:00 3-3 *Well Read*  
9:30 3-3 *Start Up*
- 10:00 Secrets of the Dead "The Lost Diary of Dr. Livingstone"**  
3-1 *Austin City Limits*  
3-3 *Autism: Coming of Age*
- 11:00 Super Skyscrapers**  
"The Billionaire Building"  
3-1 *Call the Midwife III, Pt. 1*  
3-3 *Masterpiece Classic "Selfridge, Pt. 8"*
- 12:00 Nova "Cold Case JFK"**  
3-1 *Masterpiece Classic "Selfridge II, Pt. 1"*

## Monday 31st

- 5:00 3-1 *Classical Stretch*  
5:30 3-1 *Wai Lana Yoga*  
6:00 3-1 *Nature*  
7:00 3-1 *Masterpiece Classic "Selfridge, Pt. 8"*  
9:00 3-1 *Taste of History*  
9:30 3-1 *Cook's Country*  
10:00 3-1 *In Pursuit of Passion*  
10:30 3-1 *P. Allen Smith's Garden Home*  
11:00 3-1 *Autism: Coming of Age*  
12:00 3-1 *Crane Song*  
1:00 3-1 *Masterpiece Classic "Selfridge, Pt. 8"*  
3:00 3-1 *Travel Detective*  
3:30 3-1 *All Aboard*  
4:00 3-1 *America's Heartland*  
4:30 3-1 *Autism: Coming of Age*  
5:30 3-1 *Nightly Business Report*  
6:00 3-1 *PBS NewsHour*  
**7:00 Antiques Roadshow "Kansas City, Pt. 1"**  
3-1 *Antiques Roadshow*  
**8:00 Antiques Roadshow "Atlanta, GA, Pt. 2"**  
3-1 *Independent Lens "Medora"*  
**9:00 Independent Lens "Medora"**  
3-3 *Charlie Rose*  
9:30 3-1 *One Night in March*  
10:00 3-1 *Charlie Rose*  
3-3 *Antiques Roadshow*  
**10:30 Travel Detective**  
"How Safe is Your Cruise?"
- 11:00 Antiques Roadshow**  
3-1 *Tavis Smiley*  
3-3 *Independent Lens "Medora"*
- 11:57 Star Gazers**
- 12:00 PBS NewsHour**  
3-1 *Antiques Roadshow*

# ◆ KENW/KMTH-FM LOG ◆

**Portales, NM, 89.5 MHz — Maljamar, NM, 98.7 MHz — Tucumcari, NM, 88.9 MHz —  
Des Moines, NM, 88.5 MHz — Ruidoso, NM, 88.5 MHz**

**Translators:** Apache Springs, 90.9 MHz; Clayton, 93.5 MHz; Conchas Dam, 88.3; Des Moines, 106.1 MHz;  
Ft. Sumner, 91.7 MHz; Las Vegas, 107.1 MHz; Midland, TX - 99.5MHz; Montoya, 90.7 MHz; Raton, 104.7 MHz; Roswell, 91.1 MHz;  
Roy, 104.9 MHz; Ruidoso, 89.3 MHz; Wagon Mound, 92.1 MHz;

## Sundays

**8:00 a.m. WITH HEART AND VOICE**  
 Mar 2 Transfiguration, Mardi Gras & Ash Wednesday  
 Mar 9 Lent 1  
 Mar 16 Lent 2  
 Mar 23 Lent 3: Psalms for the Season  
 Mar 30 Laetare Sunday  
**9:00 a.m. FOOTLIGHT PARADE**  
 Mar 2 Shakespeare on Broadway  
 Mar 9 1966 on Stage and Screen  
 Mar 16 Spotlight on Dawn Upshaw  
 Mar 23 Wanted Mr. or Ms. Right  
 Mar 30 1950 on Stage and Screen  
**10:00 a.m. RADIO LAB**  
 Mar 2 Sleep  
 Mar 9 After Life  
 Mar 16 Zoos  
 Mar 23 Pop Music  
 Mar 30 Apocalyptical  
**11:00 a.m. FRESH AIR WEEKEND**  
**12:00 p.m. PEOPLE'S PHARMACY**  
**1:00 p.m. DEMOCRACY NOW!**  
**2:00 p.m. FOOTLIGHT PARADE**  
 Mar 2 Shakespeare on Broadway  
 Mar 9 1966 on Stage and Screen  
 Mar 16 Spotlight on Dawn Upshaw  
 Mar 23 Wanted Mr. or Ms. Right  
 Mar 30 1950 on Stage and Screen  
**3:00 p.m. MOUNTAIN STAGE**  
 Mar 2 Mary Chapin Carpenter & Shawn Colvin; Aoife O'Donovan; Ari Hest; Marti Jones & Don Dixon  
 Mar 9 Del McCoury Band; The Travelin' McCourys w/ special guest Keller Williams; Susan Werner; Sarah Lee Guthrie & Johnny Irion; Mandolin Orange  
 Mar 16 To be announced  
 Mar 23 Deer Tick; Ed Kowalczyk – I Alone Acoustic; The Defibulators; Luray; Billy Thompson Band  
 Mar 30 Holly Williams; Missy Raines & the New Hip; Charlie Faye; Sam Baker; Gary Nicholson  
**5:00 p.m. CELTIC CONNECTIONS**  
 Mar 2 New Releases  
 Mar 9 American Women  
 Mar 16 St. Patrick's Celebration  
 Mar 23 Spotlight on Six  
 Mar 30 Old Favorites  
**6:00 p.m. ALL THINGS CONSIDERED**  
**7:00 p.m. VARIOUS PROGRAMS**  
 Mar 2 **MUSIC ACADEMY OF THE WEST** features young artists destined for the top of their field.  
 Mar 9 **TITO GOBBI, MASTER-SINGER – A CENTENARY CELEBRATION** This profile of the legendary singer/actor includes excerpts from several operas.

Mar 16 **BENJAMIN BRITTEN – THE BEAUTY OF LONELINESS AND OF PAIN** Leading Britten authorities and performers reflect on the inspirations behind his art and features several of his compositions.  
 Mar 23 **JEROME MOROSS – THE BIG COUNTRY AND BEYOND** A centenary celebration of the colorful life of this American composer of film scores, orchestral and chamber music, ballets, opera, and Broadway musicals.  
 Mar 30 **SAN FRANCISCO SYMPHONY** (begins)  
 BEETHOVEN: *Leonore* Overture No. 3, Op. 72a  
 HINDEMITH: Cello Concerto  
 BRAHMS: Symphony No. 1 in c, Op. 68  
 LISZT: *Tasso*, excerpt  
**9:00 p.m. THE ROMANTIC HOUR**  
 Mar 2 Thoughts of Love and Separation  
 Mar 9 Love letters to anyone from Asia Wong  
 Mar 16 Poetry from Ireland for St. Patrick's Day  
 Mar 23 Listener's contributions  
 Mar 30 Children's Views of Love  
**10:00 p.m. WEEKEND PERFORMANCE TODAY**  
**11:00 p.m. MUSIC OUT OF THE NIGHT AND INTO THE MORNING** until 5:00 a.m. when **Morning Edition** begins.

## Mondays

**7:00 p.m. CHICAGO SYMPHONY ORCHESTRA**  
 Mar 3 DEBUSSY: Prelude to *The Afternoon of a Faun*  
 BARTOK: Piano Concerto No. 2 in G; Divertimento for String Orchestra  
 STRAVINSKY: The Song of a Nightingale  
 HAYDN: Symphony No. 6, "Le Matin"  
 Mar 10 WEBER: *The Ruler of the Spirits* Overture  
 SHOSTAKOVICH: Violin Concerto No. 1 in a, Op. 99  
 BERLIOZ: *Symphonie Fantastique; Romeo and Juliet* excerpts  
 Mar 17 STRAVINSKY: Symphony in C; *The Rite of Spring*  
 MUSSORGSKY: Night on Bald Mountain  
 TCHAIKOVSKY: Piano Concerto No. 1 in b-flat, Op. 23  
 Mar 24 DVORAK: *Husitska* Overture  
 CHAVEZ: Piano Concerto  
 MUSSORGSKY: *Pictures from an Exhibition*  
 BLOCH: Schelomo

Mar 31 BEETHOVEN: Overture to *Egmont*  
 BRUCKNER: Symphony No. 9 in d  
 TCHAIKOVSKY: *Romeo and Juliet Fantasy Overture*  
**9:00 p.m. PERFORMANCE TODAY**  
**11:00 p.m. MUSIC OUT OF THE NIGHT AND INTO THE MORNING** until 5:00 a.m. when **Morning Edition** begins.

## Tuesdays

**7:00 p.m. NEW YORK PHILHARMONIC**  
 Mar 4 ROUSE: Phantasmata  
 BLOCH: Schelomo  
 BRAHMS: Symphony No. 1  
 Mar 11 ROUSE: Prospero's Rooms  
 BERNSTEIN: Serenade  
 IVES: Symphony No. 4  
 Mar 18 STRAVINSKY: Ragtime for 11 Instruments  
 SHOSTAKOVICH: Tahiti Trot  
 COPLAND: Clarinet Concerto  
 MARSALIS: Swing Symphony  
 Mar 25 NIELSEN: Flute Concerto; Violin Concerto  
 TCHAIKOVSKY: Symphony No. 2, "Little Russian"  
**9:00 p.m. PERFORMANCE TODAY**  
**11:00 p.m. MUSIC OUT OF THE NIGHT AND INTO THE MORNING** until 5:00 a.m. when **Morning Edition** begins.

## Wednesdays

**7:00 p.m. DEUTSCHE WELLE FESTIVAL CONCERTS**  
 Mar 5 MUSSORGSKY: Night on Bald Mountain, Symphonic Poem  
 TCHAIKOVSKY: Violin Concerto in D, Op. 35  
 STRAVINSKY: *The Firebird*, Ballet Music  
 Mar 12 SCHUMANN: Piano Concerto in a, Op. 54  
 BRUCKNER: Symphony No. 4 in E-Flat, "Romantic"  
 Mar 19 J.S. BACH: Fantasy and Fugue in g  
 CARPENTER: Fragments of Science-fiction Scenes  
 BRITTEN: Violin Concerto in d, Op. 15  
 ENESCU: Symphony No. 1 in E-Flat, Op. 13  
 Mar 26 TBA  
**9:00 p.m. PERFORMANCE TODAY**  
**11:00 p.m. MUSIC OUT OF THE NIGHT AND INTO THE MORNING** until 5:00 a.m. when **Morning Edition** begins.

## Thursdays

**7:00 p.m. COLLECTORS' CORNER with HENRY FOGEL**  
 Mar 6 Louis-Ferdinand Herold beyond the Zampa Overture  
 Mar 13 Music of Theodore Dubois, Program 1



Mar 20 Music of Theodore Dubois, Program 2  
 Mar 27 Music of Theodore Dubois, Program 3  
**9:00 p.m. PERFORMANCE TODAY**  
**11:00 p.m. MUSIC OUT OF THE NIGHT AND INTO THE MORNING** until 5:00 a.m. when **Morning Edition** begins.

**Fridays**

**7:00 p.m. CONCIERTO** offers classical music presented in English and Spanish.  
**8:00 p.m. FIESTA! with ELBIO BARILARI**  
 Mar 7 Latin American Symphonic Poems: Painting with Sounds  
 Mar 14 In 3/4: Latin American Waltzes  
 Mar 21 Chamber Tango  
 Mar 28 Latin American Music Based on Literary Sources  
**9:00 p.m. PERFORMANCE TODAY**  
**11:00 p.m. MUSIC OUT OF THE NIGHT AND INTO THE MORNING** until 5:00 a.m. when **People's Pharmacy** begins.

**Saturdays**

**8:00 a.m. CAR TALK**  
**9:00 a.m. WAIT WAIT DON'T TELL ME**  
**10:00 a.m. THE BIONEERS: Revolution from the Heart of Nature**

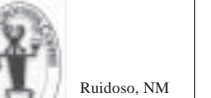
**10:30 a.m. NEW LETTERS ON THE AIR**  
**11:00 a.m. THE METROPOLITAN OPERA**  
 Mar 1 BORODIN: *Prince Igor*  
 Mar 8 HANDEL, ETAL: *The Enchanted Island*  
 Mar 15 MASSENET: *Werther*  
 Mar 22 BERG: *Wozzeck*  
 Mar 29 BELLINI: *La Sonnambula*  
**3:00 p.m. CLASSICAL GUITAR ALIVE!**  
**4:00 p.m. A PRAIRIE HOME COMPANION**  
 Mar 1 TBA  
 Mar 8 Live from the Fitzgerald Theater with guest Butch Thompson  
 Mar 15 Live from the Fitzgerald Theater with guests Karan Casey, Butch Thompson, & Dan Newton's Café Accordion Orchestra  
 Mar 22 Live from the Fitzgerald Theater with guest Butch Thompson  
 Mar 29 Live from the Fitzgerald Theater with guest Butch Thompson  
**6:00 p.m. ALL THINGS CONSIDERED**  
**7:00 p.m. MARIAN McPARTLAND's PIANO JAZZ**  
 Mar 1 Alice Coltrane, harpist  
 Mar 8 Mary Lou Williams Tribute, pianist  
 Mar 15 Joanne Brackeen, pianist  
 Mar 22 Nadine Jansen, horn player, pianist  
 Mar 29 Dianne Reeves, jazz singer

**8:00 p.m. SWINGIN' DOWN THE LANE**  
 Mar 1 Amanda Carr Playlist – Songs recorded by contemporary female vocal artists for her latest CD  
 Mar 8 Where or When – Songs suggested by Rodgers and Hart  
 Mar 15 Trumpet Rhapsody – Parade of master soloists  
 Mar 22 Jersey Bounce 1 – Musicians from the Garden State  
 Mar 29 Jersey Bounce 2 – Musicians from the Garden State  
**9:00 p.m. ALL THESE BLUES WITH ROGER GATCHET**  
**10:00 p.m. DREAMFARM RADIO**  
 Each week, Julie Lavender welcomes accomplished independent jazz musicians into the family barn.  
**11:00 p.m. JAZZSET WITH DEE DEE BRIDGEWATER**  
 Mar 1 Dr. Lonnie Smith  
 Mar 8 The Late Mulgrew Miller's Trio at the Kennedy Center  
 Mar 15 Lionel Loueke  
 Mar 22 Two Skirts and a Shirt at The Kennedy Center  
 Mar 29 Jane Bunnett and Hilario Duran at The Kennedy Center  
**12:00 a.m. MUSIC OUT OF THE NIGHT AND INTO THE MORNING** until 6:00 a.m. when **Weekend Edition** begins.

**FM Radio Week-at-a-Glance**

	Sunday	Monday	Tuesday	Wednesday	Thursday	Friday	Saturday	Monday through Friday
5:00							5:00 a.m. People's Pharmacy	Regional Newscasts at: 5:33, 6:33, 7:33, and 10:06 a.m. 12:06, 2:06, and 5:33 p.m. 8:01 Marketplace Report 8:09 Ski Report 8:20 Nature Notes (Tu) Playa Country (Th) 8:30 Health in a Heartbeat 8:45 Insight 9:00 Weather/News 9:05 Dateline New Mexico 9:15 Marketplace Tech Report 9:20 A Southwest Spotlight (F) 9:30 Radio MD News/ 9:45 New Mexico Matters 10:00 News/Statewide News 10:15 Engines of Our Ingenuity 10:30 Composers' Datebook 10:45 Writer's Almanac 11:00 Weather/News 11:15 Melinda's Garden Moment 11:30 Pulse of the Planet 11:45 Isla Earth 12:00 News/Statewide News 12:15 Community Calendar 12:30 Moment in Time/ Ski Report 12:35 Fine Arts Venue (Th) 12:45 Arts and Science 1:00 Weather/News 1:15 Sound Print 1:30 Loh Down on Science 1:45 A Moment of Science 2:00 News/Statewide News 2:15 Bird Note 2:20 A Southwest Spotlight (W) 2:30 America's Storyteller 2:45 90 Second Naturalist 3:00 Weather/News 3:06 Innovation Now/ Fitness Minute 3:15 The Plant Detective 3:25 Dateline New Mexico/ Ski Report 6:57 Weather 9:00 Weather/News 12:00/ 3:00 a.m. Weather/News
6:00	Weekend Edition	Morning Edition	Morning Edition	Morning Edition	Morning Edition	Morning Edition	6:00 a.m. Weekend Edition	
7:00							8:00 a.m. Car Talk	
8:00	With Heart and Voice						9:00 a.m. Wait, Wait... Don't Tell Me	
9:00	Footlight Parade	Music	Music	Music	Music	Music	10:00 a.m. Bioneers	
10:00	Radiolab	News	News	News	News	News	10:30 a.m. New Letters	
11:00	Fresh Air Weekend with Terry Gross	&	&	&	&	&	11:00 a.m. The Metropolitan Opera	
12:00	People's Pharmacy (R)	Features	Features	Features	Features	Features	3:00 p.m. Classical Guitar	
1:00	Democracy Now!						4:00 p.m. Prairie Home Companion	
2:00	Footlight Parade							
3:00		Parents Journal	Knowledge	51 Percent	Moyers & Co.	Says You!		
3:30	Mountain Stage	Marketplace	Marketplace	Marketplace	Marketplace	Marketplace		
4:00								
4:30		All Things Considered	All Things Considered	All Things Considered	All Things Considered	All Things Considered		
5:00	Celtic Connections	PBS NewsHour	PBS NewsHour	PBS NewsHour	PBS NewsHour	PBS NewsHour	All Things Considered	
6:00	All Things Considered	Chicago Symphony Orchestra	New York Philharmonic	Deutsche Welle Festival Concerts	Collectors' Corner	Concierto with Frank Dominguez	Marian McPartland	
7:00	WFMT Specials					Fiesta! with Elbio Barilari	Swingin' Down the Lane	
8:00		Performance Today	Performance Today	Performance Today	Performance Today	Performance Today	All These Blues with Roger Gatchet	
9:00	The Romantic Hours						DreamFarm Radio	
10:00	Performance Today						Jazzset with D.D. Bridgewater	
11:00	Classical Music Out of the Night until 5:00 a.m.	Classical Music Out of the Night until 5:00 a.m.	Classical Music Out of the Night until 5:00 a.m.	Classical Music Out of the Night until 5:00 a.m.	Classical Music Out of the Night until 5:00 a.m.	Classical Music Out of the Night until 5:00 a.m. when People's Pharmacy begins.	Classical Music Out of the Night until 6:00 a.m.	

# BUSINESS FRIENDS

 <p><b>Taylor Water Well Service</b> Water Well Drilling Pump Sales &amp; Service</p> <p>Carlsbad, NM A Prairie Home Companion, FM Wait, Wait...Don't Tell Me, FM</p>	 <p><b>Navyajo Refining Company</b> Artesia, NM</p> <p>Music &amp; News, FM</p>	 <p><b>The Citizens Bank</b> Clovis, Fort Sumner, Texico, NM</p> <p>Market to Market</p>	 <p><b>CJ's Pharmacy</b>... At your Service Portales, NM Family Health, FM Deutsche Welle Festival, FM Classical Guitar Alive, FM Mt. Stage, FM</p>	 <p><b>Merrill Lynch Wealth Management</b> Roswell Branch Office Tel: 575.622.1642 Moyers &amp; Company</p>	 <p><b>Portales NEWS-TRIBUNE</b> pntonline.com</p> <p>Portales, NM Austin City Limits</p>
<p><b>This space could be yours!</b> For Underwriting opportunities, please call toll-free (888) 367-5369. Ask for Rena for TV, Amie for FM</p>	 <p><b>Clovis Community College</b> Cultural Art Series Primetime Programming, TV</p>	 <p>Roswell, NM Classic Gospel</p>	<p><b>This space could be yours!</b> For Underwriting opportunities, please call toll-free (888) 367-5369. Ask for Rena for TV, Amie for FM</p>	 <p><b>PLATEAU</b> Evening News/Public Affairs BBC World News News 3 New Mexico</p>	 <p><b>Featherstone Development Corporation</b> Roswell, NM Morning Edition, FM Jazz Programming, FM</p>
<p><b>New Mexico Humanities Council</b> Albuquerque, NM (505) 277-3217 www.nmhum.org Morning Edition, FM Weekend Edition, FM</p>	<p><b>Lindsey Law Firm</b> Daniel R. Lindsey Brett J. Carter Clovis, NM Nova</p>	 <p><b>Featherstone Development Corporation</b> Roswell, NM Nature, Nightly Business Report, Star Gazers</p>	 <p><b>FEC</b> A Touchstone Energy Cooperative <b>Farmers' Electric Cooperative, Inc. of New Mexico</b> Clovis, NM Ask This Old House</p>	 <p>Ruidoso, NM Morning Edition, FM Weekend Edition, FM</p>	<p><b>Roswell Jazz Festival</b> Roswell, NM Piano Jazz, FM Jazz at Lincoln Center, FM</p>
<p><b>Maddox, Holloman &amp; Kirksey, P.C., Attorneys and Counselors at Law</b> Hobbs, NM Morning Edition All Things Considered, FM</p>	<p><b>Tome on the Range</b> Las Vegas, NM Fresh Air Weekend Weekend Edition, FM Writer's Almanac, FM</p>	<p><b>Phil Brewer ATTORNEY &amp; COUNSELOR</b> Roswell, NM Car Talk, FM</p>	 <p><b>URENCO USA</b> Eunice, NM Morning Edition, FM Weekend Edition, FM Evening Symphonies, FM Daytime &amp; Weekend FM Pgms.</p>	 <p><b>CJ's Pharmacy</b>... At your Service Portales, NM Antiques Roadshow, Healthy Body, Healthy Mind, McLaughlin Group, Sportslook</p>	 <p><b>Ford Mercury Lincoln</b> <b>Permian Ford-Lincoln-Mercury, Inc.</b> Hobbs, NM Weekend ATC, FM All Things Considered, FM Car Talk, FM</p>
 <p><b>The Sewing Basket</b> Clovis, NM Quilting Programs</p>	 <p><b>VALLEY MOWER CLINIC, INC</b> Clovis, NM P. Allen Smith's Garden to Home</p>	<p><b>John J. Ingram &amp; Associates</b> Midland, TX 1-800-299-6809 Morning Edition, FM Dateline New Mexico, FM Weekend Edition, FM People's Pharmacy, FM</p>	<p><b>Atwood, Malone, Turner &amp; Sabin Attorneys at Law</b> Roswell, NM Deutsche Welle Festival, FM All Things Considered, FM</p>	<p><b>Penasco Valley Telecommunications</b> Health Show, Car Talk, Mountain Stage FM</p>	 <p><b>Hagman Operating Company</b> Roswell, NM American Experience, Masterpiece, Nova, PBS NewsHour</p>
 <p><b>Albuquerque, NM</b> Antiques Roadshow, Masterpiece, PBS NewsHour</p>	 <p><b>NMDA</b> New Mexico Department of Agriculture Las Cruces, NM America's Heartland</p>	<p><b>The Ruidoso Physical Therapy Clinic</b> Ruidoso, NM Morning &amp; Weekend Edition, FM Living on Earth, FM Swinging Down the Lane, FM Democracy Now, FM</p>	 <p><b>Roosevelt County Electric Cooperative</b> Portales, NM Antiques Roadshow</p>	 <p><b>Albuquerque, NM</b> BBC World News PBS NewsHour</p>	 <p><b>CHAVES COUNTY FARM AND LIVESTOCK BUREAU</b> Dexter and Roswell, NM America's Heartland</p>
<p><b>Names and Numbers Telephone Book</b> Evening News/Public Affairs Programming News 3 New Mexico</p>	<p><b>Hinkle, Hensley, Shanor &amp; Martin, L.L.P.</b> Roswell, Santa Fe, NM; Austin, Midland, TX Morning Edition, FM Prairie Home Companion, FM</p>	 <p><b>Muleshoe State Bank</b> Muleshoe, TX Nature</p>	 <p><b>Goodwill Industries</b> Morning Edition, FM All Things Considered, FM</p>	<p><b>James Polk Stone Community Bank</b> Clovis, Eunice, Hagerman, Hobbs, Portales, Roswell Austin City Limits</p>	<p><b>Living Desert Zoo &amp; Gardens State Park</b> Open Every Day Except Christmas Carlsbad, NM Austin City Limits, Nature, PBS NewsHour</p>
 <p><b>Clovis, NM</b> This Old House</p>	 <p><b>SECURITY STATE BANK</b> Farwell, TX Antiques Roadshow</p>	 <p><b>EASTERN NEW MEXICO UNIVERSITY</b> Portales, NM Austin City Limits</p>	 <p><b>High Country Agency, Inc.</b> Ruidoso, NM Morning Edition, FM</p>	<p><b>First Presbyterian Church of Roswell</b> Roswell, NM With Heart and Voice, FM</p>	 <p><b>Clovis and Portales</b> Wait, Wait...Don't Tell Me, FM</p>

## A to Z — Channel HD3-1 — March 2014

**10 Buildings That Changed America** – Saturday, 29th, 8:00 p.m.  
**3 Steps to Incredible Health!** – Thursday, 6th, 9:30 p.m.  
**30 Days to a Younger Heart** – Tuesday, 4th, 8:30 p.m.  
**All Aboard** – Mondays, 3:30 p.m.  
**American Masters "Lennon NYC"** – Saturday, 22nd, 7:00 p.m.  
**American Experience "1964"** – Tuesday, 18th, 12:00 midnight  
**America's Heartland** – Mondays, 4:00 p.m.  
**America's Wild West** – Wednesday, 5th, 7:00 p.m.  
**Antiques Roadshow** – Mondays, 7:00 p.m./12:00 midnight (except 3rd, 10th);  
 Tuesdays, 6:00 a.m./12:00 noon; Saturdays, 6:00 p.m. (except 8th, 15th)  
**Arts in Context** – Fridays, 6:00 a.m.  
**Ask This Old House** – Saturdays, 1:00 p.m. Sundays, 2:30 p.m. (except 9th)  
**Augusta's Master Plan: From Sherman's March to Arnie's Army** –  
 Monday, 24th, 11:00 a.m./4:30 p.m.  
**Austin City Limits** – Saturdays, 10:00 p.m.; Sundays, 10:00 p.m. (except 16th)  
**Autism: Coming of Age** – Monday, 31st, 11:00 a.m./4:30 p.m.  
**Bird Tales** – Monday, 3rd, 6:00 a.m./12:00 noon  
**Bitter Seeds** – Monday, 17th, 12:00 noon  
**Bletchley Circle I (Pt. 1)** – Saturday, 29th, 9:00 p.m.

**Blood Sugar Solution 10-Day Detox Diet** – Wednesday, 12th, 7:00 p.m.  
**Built to Last** – Fridays, 1:30 p.m.  
**Call the Midwife III (Pt. 1)** – Sunday, 30th, 7:00 p.m./11:00 p.m.  
**Celebration of Blues & Soul: The 1989 Inaugural Concert** –  
 Thursday, 13th, 7:00 p.m.  
**Celtic Tenors: No Boundaries** – Monday, 17th, 11:00 a.m./4:30 p.m.  
**Celtic Woman: Emerald** – Saturday, 15th, 8:00 p.m.; Sunday, 9th, 2:00 p.m.  
**Charlie Rose** – Monday-Friday, 10:00 p.m. (10:30 p.m. 5th, 7th, 11th)  
**Charlie Rose: The Week** – Fridays, 7:30 p.m. (except 7th, 14th);  
 Saturdays, 5:30 p.m.; Sundays, 1:00 p.m.; Thursdays, 6:30 a.m.  
**Christina** – Wednesdays, 3:30 p.m.  
**Civic Summit: Obesity, Weight Loss and Body Acceptance** –  
 Tuesday, 25th, 8:00 a.m./2:00 p.m.  
**Civilization: The West and the Rest (Two 2-hr. Pts.)** – (Pt. 1) Wednesday, 5th,  
 6:00 a.m./12:00 noon; (Pt. 2) Wednesday, 12th, 6:00 a.m./12:00 noon  
**Classical Rewind** – Sunday, 9th, 7:00 p.m.  
**Classical Stretch** – Monday-Friday, 5:00 a.m.  
**Closer to Truth** – Tuesdays, 10:00 a.m.; Thursdays, 4:00 p.m.  
**Consuelo Mack WealthTrack** – Tuesdays, 4:00 p.m.





- Cooking 80/20 with Robin Shea** – Wednesdays, 3:00 p.m. (begins 26th)  
**Cook's Country from America's Test Kitchen** – Mondays, 9:30 a.m.  
**Crane Song** – Monday, 31st, 12:00 noon  
**Creative Living** – Thursdays, 9:00 p.m. (except 6th, 13th)  
**Daniel O'Donnell Stand Beside Me** – Sunday, 9th, 8:30 p.m.  
**Deepak Chopra: What Are You Hungry For?** – Monday, 10th, 8:30 p.m.  
**Dr. Wayne Dyer: I Can See Clearly Now** – Monday, 3rd, 7:00 p.m.  
**Driven to Ride** – Tuesday, 18th, 8:30 a.m./2:30 p.m.  
**Ecosense for Living** – Wednesdays, 4:00 p.m. (begins 19th)  
**Ed Slott's Retirement Rescue for 2014!** – Saturday, 8th, 7:30 p.m.  
**European Journal** – Fridays, 5:00 p.m.  
**Evolution of the Nation of Islam** – Wednesday, 19th, 7:00 a.m./1:00 p.m.  
**Family Travel** – Wednesdays, 9:00 a.m.  
**Ferrets: The Pursuit of Excellence** – Saturday, 22nd, 9:00 p.m.  
**Fons & Porter's Love of Quilting** – Thursdays, 9:00 a.m.  
**Front and Center "Preservation Hall Jazz Band"** – Monday, 3rd, 11:00 a.m./4:30 p.m.  
**Frontline** –  
    **"Rape in the Fields"** – Tuesday, 18th, 9:00 p.m.  
    **"TB Silent Killer"** – Tuesday, 25th, 9:00 p.m.; Wednesday, 26th, 11:00 a.m./4:30 p.m.  
**Gary Spetz's Painting Wild Places** – Fridays, 11:00 a.m.  
**Gentleman's Rule in Concert** – Tuesday, 4th, 7:00 p.m.; Thursday, 13th, 8:30 p.m.  
**Global Health Frontiers: Dark Forest, Black Fly** – Tuesday, 11th, 8:00 a.m./2:00 p.m.  
**Globe Trekker** – Fridays, 9:00 a.m./3:00 p.m.  
**Great Performances** –  
    **"Dukes of September"** – Wednesday, 5th, 8:30 p.m.  
    **"Bob Dylan: 30th Anniversary Celebration"** – Tuesday, 11th, 8:30 p.m.  
    **"Steve Martin and the Steep Canyon Rangers"** – Sunday, 16th, 8:00 p.m.  
**Growing a Greener World** – Wednesdays, 4:00 p.m. (ends 12th)  
**Heal Yourself: Mind Over Medicine** – Wednesday, 12th, 8:30 p.m.  
**Healing ADD with Dr. Daniel Amen** – Saturday, 15th, 2:30 p.m.  
**Healthy Body Healthy Mind** – Tuesdays, 9:00 a.m.  
**Heart 411** – Monday, 10th, 7:00 p.m.  
**Heartbeat of Home** – Friday, 7th, 7:00 p.m.  
**History Detectives** – Saturdays, 4:00 p.m.  
**Hometime** – Saturdays, 1:30 p.m.  
**In My Lifetime** – Wednesday, 5th, 8:00 a.m./2:00 p.m.  
**In Pursuit of Passion** – Mondays, 10:00 a.m.; Tuesdays, 3:30 p.m. (begins 11th)  
**In the Americas** – Thursdays, 3:00 p.m.  
**Independent Lens** –  
    **"More Than a Month"** – Tuesday, 4th, 7:00 a.m./1:00 p.m.; Saturday, 8th, 9:00 p.m.  
    **"The Revolutionary Optimists"** – Tuesday, 11th, 7:00 a.m./1:00 p.m.  
    **"Pushing the Elephant"** – Monday, 17th, 8:00 p.m.; Tuesday, 18th, 7:00 a.m./1:00 p.m.  
    **"All of Me: A Story of Love, Loss, and Last Resort"** – Monday, 24th, 8:00 p.m.; Tuesday, 25th, 7:00 a.m./1:00 p.m.  
    **"Medora"** – Monday, 31st, 8:00 p.m.  
**Inspector George Gently** – Fridays, 8:00 p.m. (except 7th; 8:30 p.m. on 14th)  
**Israel: The Royal Tour** – Wednesday, 19th, 6:00 a.m./12:00 noon  
**Jammin' at Hippie Jack's** – Fridays, 6:30 a.m.  
**Jazz and the Philharmonic** – Saturday, 1st, 7:00 p.m.  
**Jewish Soldiers in Blue & Gray** – Wednesday, 12th, 8:00 a.m./2:00 p.m.  
**Joe Bonamassa: Tour de Force – Live in London** – Saturday, 1st, 8:30 p.m.  
**Joy of Painting** – Fridays, 10:00 a.m.  
**Jubilee** – Fridays, 12:00 noon  
**Julia and Jacques Cooking at Home** – Wednesdays, 3:00 p.m. (ends 19th)  
**Julia Child – Cooking with Master Chefs** – Saturdays, 11:00 a.m.  
**Just Seen It** – Fridays, 4:00 p.m.  
**Knit and Crochet Now!** – Thursdays, 10:00 a.m.  
**Life on Fire** –  
    **"Volcano Doctors"** – Thursday, 6th, 2:00 p.m.  
    **"Phoenix Temple"** – Thursday, 13th, 2:00 p.m.  
**Life From Lincoln Center "Patina Miller"** – Saturday, 29th, 7:00 p.m.  
**Lord Is Not On Trial Here Today** – Wednesday, 19th, 8:00 a.m./2:00 p.m.  
**Makers: Women Who Make America (3 Pts.)** – Thursdays, 11:00 a.m./4:30 p.m. (begins 13th)  
**Market to Market** – Sundays, 1:30 p.m.  
**Martha Bakes** – Saturdays, 3:30 p.m. (except 15th)  
**Martha Stewart's Cooking School** – Saturdays, 3:00 p.m. (except 15th)  
**Masterpiece Classic "Downton Abbey IV"** (Pt. 8) – Sunday, 2nd, 6:00 p.m.  
**Masterpiece Classic "Mr. Selfridge I"** –  
    Episode 1, Sunday, 2nd, 11:00 p.m.; Monday, 3rd, 7:00 a.m./1:00 p.m.  
    Episodes 2-3, Sunday, 9th, 11:00 p.m.; Monday, 10th, 7:00 a.m./1:00 p.m.  
    Episodes 4-5, Sunday, 16th; 10:00 p.m.; Monday, 17th, 7:00 a.m./1:00 p.m.  
    Episodes 6, Sunday, 16th, 12:00 mid.; Monday, 24th, 7:00 a.m./1:00 p.m.  
**Masterpiece Classic "Mr. Selfridge"** (continued) –  
    Episode 7, Sunday, 23rd, 7:00 p.m.; Monday, 24th, 8:00 a.m./2:00 p.m.  
    Episode 8, Sunday, 23rd, 8:00 p.m.; Monday, 31st, 7:00 a.m./1:00 p.m.  
**Masterpiece Classic "Mr. Selfridge II"** – Sundays, 8:00 p.m./12:00 mid. (begins 30th)  
**Mavericks: In Time** – Tuesday, 11th, 7:00 p.m.  
**Moments to Remember** – Thursday, 6th, 7:00 p.m.  
**Motorweek** – Saturdays, 2:30 p.m. (except 15th)  
**Moving with Grace** – Wednesday, 5th, 11:00 a.m./4:30 p.m.  
**Moyers & Company** – Thursdays, 6:00 a.m.; Fridays, 4:30 p.m.  
**Naked Option** – Tuesday, 18th, 8:00 p.m.  
**Natural Beekeeping** – Monday, 10th, 12:00 noon  
**Natural Heroes VI** – Tuesdays, 3:00 p.m.  
**Nature** – Wednesdays, 7:00 p.m. (except 5th, 12th)/12:00 midnight; Thursdays, 7:00 a.m./12:00 noon; Saturdays, 11:00 p.m.; Sundays, 6:00 p.m. (except 2nd)  
**Nature's Invitation** – Monday, 17th, 9:30 p.m.  
**Nightly Business Report** – Monday-Friday, 5:30 p.m.  
**Not in Our Town: Light in the Darkness** – Tuesday, 4th, 8:00 a.m./2:00 p.m.  
**Nova** – Wednesdays, 8:00 p.m. (except 5th, 12th); Thursdays, 8:00 a.m./1:00 p.m.; Saturdays, 12:00 midnight; Sundays, 4:00 p.m.  
**One Night in March** – Monday, 31st, 9:30 p.m.  
**P. Allen Smith's Garden Home** – Mondays, 10:30 a.m.  
**Paint This with Jerry Yarnell** – Fridays, 10:30 a.m.  
**PBS Newshour** – Monday-Friday, 6:00 p.m.  
**PBS Newshour: Weekend** – Saturday-Sunday, 5:00 p.m.  
**POV – "Sun Kissed"** – Thursday, 6th, 11:00 a.m./4:30 p.m.  
    **"The Light in Her Eyes"** – Wednesday, 12th, 11:00 a.m./4:30 p.m.  
    **"The World Before Her"** – Wednesday, 19th, 11:00 a.m./4:30 p.m.  
    **"Heartbreak Hill"** – Monday, 24th, 9:00 p.m.  
**Preparing for Disaster: Starting Now** – Monday, 24th, 12:00 noon  
**Quilt in a Day** – Thursdays, 9:30 a.m.  
**Railroad Man: Legend of Jay Gould** – Wednesday, 26th, 8:00 a.m./2:00 p.m.  
**Red Green Show** – Thursdays, 8:00 p.m. (20th, 27th only)  
**Religion & Ethics** – Tuesdays, 10:30 a.m.; Sundays, 2:00 p.m. (except 9th)  
**Remembering the Sirens** – Tuesday, 18th, 7:00 p.m.  
**Report from Santa Fe** – Tuesdays, 5:00 p.m.  
**Rick Steves' Festive Europe** – Sunday, 16th, 7:30 p.m.  
**Rick Steves' Italy: Cities of Dreams** – Saturday, 15th, 6:00 p.m.  
**Rough Cut: Woodworking with Tommy Mac III** – Wednesdays, 10:00 a.m.  
**Scully/The World Show** – Tuesdays, 4:30 p.m.  
**Second Opinion** – Tuesdays, 9:30 a.m.  
**Secrets of the Dead "Lost Diary of Dr. Livingstone"** – Wednesday, 26th, 9:00 p.m.; Thursday, 27th, 2:00 p.m.; Sunday, 30th, 3:00 p.m.  
**Secrets of the Tower of London** – Sunday, 23rd, 11:00 p.m.  
**Sew It All** – Thursdays, 10:30 a.m.  
**Skeletons of the Sahara** – Wednesday, 19th, 9:00 p.m.; Thursday, 20th, 2:00 p.m.; Sunday, 23rd, 3:00 p.m.  
**Song of the Mountains** – Tuesdays, 11:00 a.m.; Thursdays, 7:00 p.m. (except 6th, 13th); Fridays, 7:00 a.m.  
**Sportslook** – Thursdays, 8:30 p.m. (20th, 27th only)  
**Start Up** – Tuesday, 4th, 3:30 p.m. (ends)  
**Story of the Jews (5 Pt. series)** – (Pts. 1 & 2) Tuesday, 25th, 7:00 p.m./12:00 midnight; Wednesday, 26th, 6:00 a.m./12:00 noon  
**Sun Studio Sessions** – Fridays, 1:00 p.m. (begins 7th)  
**Super Skyscrapers "The Billionaire Building"** – Sunday, 2nd, 3:00 p.m.  
**Suze Orman's Financial Solutions for You** – Sunday, 2nd, 8:00 p.m.  
**Taste of History** – Mondays, 9:00 a.m.  
**Tavis Smiley** – Monday-Friday, 11:00 p.m. (except 5th, 7th, 11th)/11:30 p.m.  
**This American Land** – Wednesdays, 9:30 a.m. (ends 12th)  
**This Old House** – Saturdays, 12:00 noon/12:30 p.m.  
**This Old House Hour** – Thursdays, 12:00 midnight; Fridays, 8:00 a.m./2:00 p.m.; Saturdays, 10:00 a.m.  
**Titanic—Band of Courage** – Friday, 14th, 7:00 p.m.  
**Train Your Dog Like a Pro** – Sunday, 2nd, 11:30 a.m.  
**Travel Detective** – Mondays, 3:00 p.m.  
**Travel with Kids** – Wednesdays, 9:30 a.m. (begins 19th)  
**Under the Streetlamp: Let the Good Times Roll** – Friday, 7th, 9:00 p.m.; Saturday, 8th, 6:00 p.m.  
**Victory Garden** – Saturdays, 11:30 a.m.  
**Vintage** – Fridays, 9:30 p.m. (except 7th, 14th)  
**Visionaries** – Thursdays, 3:30 p.m. (begins 6th)  
**Wai Lana Yoga** – Monday-Friday, 5:30 a.m.  
**War Zone/Comfort Zone** – Monday, 10th, 11:00 a.m./4:30 p.m.  
**Washington Week** – Fridays, 7:00 p.m. (except 7th, 14th)/12:00 midnight; Sundays, 12:30 p.m./5:30 p.m.  
**Welcome to My Studio** – Fridays, 11:30 a.m.  
**Woodturning Workshop** – Wednesdays, 10:30 a.m.  
**Woodwright's Shop** – Saturdays, 2:00 p.m.  
**You Should Know** – Thursdays, 9:30 p.m. (20th, 27th only)

# DAYS OF SPRING AUCTION

Online: April 21-30  
On-Air: April 22, 24, 26

## Mark Your Calendars! Online and On-Air Auctions are Coming in April

You asked us to bring back our “live” On-Air Auction and we have! It will be April 22nd, 24th, and 26th on KENW-TV with call-in bidding — just like we used to do. We will begin each night at 7:00 p.m. and auction until 10:00 p.m. (MST). Get ready to watch, bid and buy!

Our Online Auction will also be going on. It is scheduled to run from April 21st through the 30th at <http://auction.kenw.org>.

**Auction Catalogs are available:** For the benefit of those who will be bidding during our On-Air Auction, we have compiled a catalog of most of the items to be auctioned and have indicated the night they will come up for bid. To get your copy, just send \$5.00 to KENW-TV Auction Catalog, 1500 S. Ave. K, St. #52, Portales, NM 88130. When you receive the invoice for your winning bid(s), \$2.00 of this \$5.00 will be deducted from your total charges.

You also need to request an **Express Bid Number** in order to bid on-air. Just give us a call between 8:00 a.m. and 5:00 p.m. (MST), Monday – Friday, and we’ll give you your own personalized bidding number so you can quickly bid during the live call-in bidding. You **MUST** have an Express Bid Number in order to bid this year.

For the Online Auction, if you have registered in the past, please double-check your information and make sure it is still current. If you haven’t registered before, go to the website at <http://auction.kenw.org> and click on the “Register” link at the top of the page. Fill out the necessary information, and then you’re ready to browse among hundreds of exciting items that will be up for bid until April 30th.

We wish to thank all of our auction sponsors, donors, and cash contributors. Now, it’s all up to you! Please share our auction website address with friends and family members, especially those in your e-mail address book, on Facebook, and on Twitter. Once you start bidding, you will see how much fun this can be!

### WATCH, SURF ([auction.kenw.org](http://auction.kenw.org)), BID & BUY

NON PROFIT ORG  
U.S. POSTAGE PAID  
PORTALES NM 88130  
PERMIT 15

