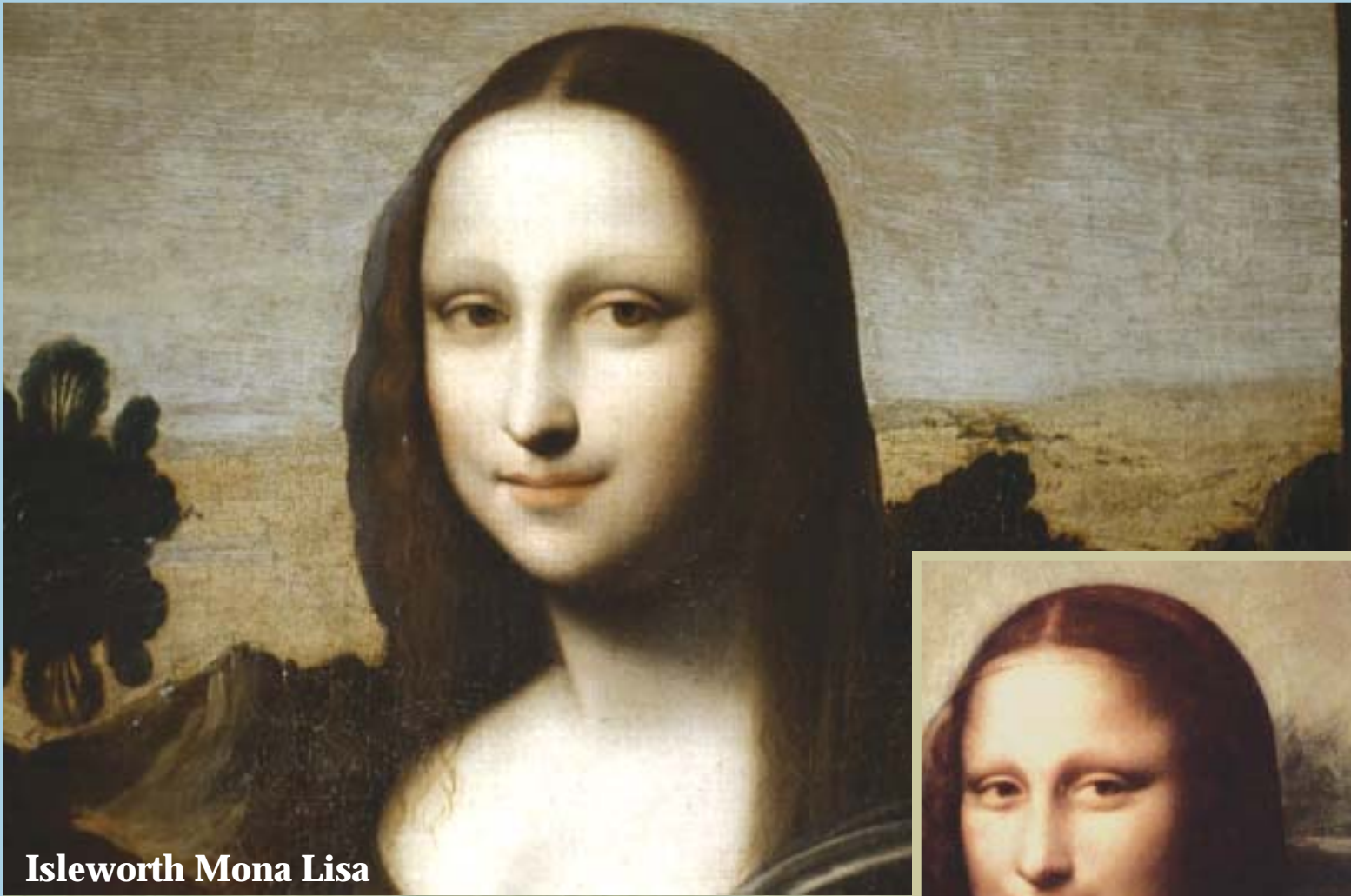


Q2.3

Program Guide KENW-TV/FM
Eastern New Mexico University
July 2014



Isleworth Mona Lisa

Did Leonardo da Vinci paint an earlier, younger, more beautiful Mona Lisa or is the “Isleworth Mona Lisa” a cunning fake?

THE MONA LISA MYSTERY

**Secrets
of the Dead**



Louvre Mona Lisa

When to watch from *A to Z*

Channel 3-2 – July 2014

All Aboard – Sundays, 1:30 p.m.; Mondays, 10:00 p.m.
American Woodshop – Saturdays, 6:30 a.m.; Thursdays, 11:00 a.m.
America's Heartland – Saturdays, 6:30 p.m.
America's Test Kitchen – Saturdays, 8:00 a.m.; Mondays, 11:00 a.m.
Antiques Roadshow –
Mondays, 7:00 p.m./8:00 p.m./11:00 p.m.; Sundays, 7:00 a.m.
Ask This Old House – Saturdays, 4:00 p.m.
Austin City Limits – Saturdays, 9:00 p.m./12:00 midnight
Barbecue University – Saturdays, 9:00 a.m.
BBC Newsnight – Fridays, 5:00 p.m.
BBC World News – Monday–Friday, 6:30 a.m./4:30 p.m.
Beads, Baubles and Jewels – Mondays, 12:30 p.m.
Beauty of Oil Painting – Fridays, 12:30 p.m.; Saturdays, 12:00 noon
Charlie Rose – Tuesday–Thursday, 11:00 p.m. (11:30 p.m. on 8th)
Charlie Rose: The Week – Fridays, 8:30 p.m. (except 4th);
Mondays, 5:00 p.m.
Christina Cooks – Saturdays, 8:30 a.m. (begins 26th)
Classic Art Showcase – Sunday–Saturday, 1:00 a.m.–6:00 a.m.
Classic Gospel – Sundays, 8:00 a.m./4:00 p.m.
Classical Stretch – Monday through Friday, 6:00 a.m.
Closer to Truth – Sundays, 2:00 p.m.
Consuelo Mack WealthTrack – Fridays, 7:30 p.m.
Creative Living – Tuesdays/Thursdays, 12:00 noon;
Tuesdays, 9:30 p.m.; Saturdays, 2:00 p.m.
European Journal – Thursdays, 5:00 p.m.
Expeditions with Patrick McMillan – Sundays, 6:00 a.m.
Farm with Ian Knauer – Thursdays, 9:00 p.m. (except 10th)
Fit 2 Stitch – Tuesdays, 12:30 p.m. (begins 1st);
Saturdays, 5:30 p.m. (begins 12th);
Fons & Porter's Love of Quilting – Saturdays, 1:30 p.m.;
Wednesdays, 12:30 p.m.
Frontline – Tuesdays, 10:00 p.m.; Thursdays, 7:00 p.m.
(Frontline producers often make late programming changes.)
"To Catch a Trader" – 1st, 3rd
"Secrets of the Vatican" – 8th, 10th (90 minutes)
"Separate and Unequal" – 15th, 17th
"Poor Kids" – 22nd, 24th
"Generation Like" – 29th, 31st
Getting Away Together – Mondays, 10:30 p.m. (begins 7th)
Globe Trekker – Sundays, 11:00 a.m.
Good Neighbors – Saturdays, 8:30 p.m.
Healthy Body/Mind – Wednesdays, 10:00 p.m.; Sundays, 3:00 p.m.
Hometown – Saturdays, 3:00 p.m.
In Focus – Sundays, 12:30 p.m. (except 6th)
Joanne Weir's Cooking Class – Saturdays, 2:30 p.m.
Joy of Music – Sundays, 9:00 a.m./9:30 a.m.
Joy of Painting – Saturdays, 11:30 a.m.
Knitting Daily – Tuesdays, 11:30 a.m.
Lawrence Welk Show – Saturdays, 7:00 p.m.
Market to Market – Fridays, 7:00 p.m.
Martha Stewart's Cooking School III –
Saturdays, 8:30 a.m. (ends 19th); Tuesdays, 11:00 a.m.
Masterpiece Mystery! – Sundays, 8:00 p.m.;
Fridays, 10:00 p.m. (10:30 p.m. on 4th)
"Endeavor, Season 2" – ends 20th, 25th
"Poiret, Season 12" – begins 27th, August 1st, (11:00 p.m.)
McLaughlin Group – Sundays, 5:30 p.m.
Motorweek – Saturdays, 9:30 a.m.
Moyers & Company – Sundays, 6:00 p.m.
Nature – Wednesdays, 7:00 p.m. (2nd, 9th only);
Saturdays, 11:00 p.m. (5th, 12th only)
New Fly Fisher – Wednesdays, 11:00 a.m.
Nightly Business Report – Monday–Friday, 5:30 p.m.
Nova – Wednesdays, 8:00 p.m.; Saturdays, 10:00 p.m.;
Sundays, 12:00 midnight
"Ghosts of Murdered Kings" – 2nd, 5th, 6th
"Mystery of a Masterpiece" – 9th, 12th, 13th
"Australia's First 4 Billion Years" (4 Pts.) – begins 16th, 19th, 20th
P. Allen Smith's Garden to Table – Saturdays, 10:00 a.m.

A to Z listings for Channel HD3-1 are on pages 18 & 19

Paint This with Jerry Yarnell – Saturdays, 11:00 a.m.
PBS NewsHour – Monday–Friday, 6:00 p.m./12:00 midnight
PBS NewsHour: Weekend – Sundays, 5:00 p.m.
Quilt in a Day – Saturdays, 12:30 p.m.
Quilting Arts – Saturdays, 1:00 p.m.
Red Green Show – Thursdays, 9:30 p.m.
Religion/Ethics – Sundays, 3:30 p.m.; Wednesdays, 5:00 p.m.
Report from Santa Fe – Saturdays, 6:00 p.m.
Rough Cut IV – Saturdays, 7:00 a.m.
Sara's Weeknight Meals – Saturdays, 7:30 a.m.; Mondays, 11:30 a.m.
Scully/The World Show – Tuesdays, 5:00 p.m.
Second Opinion – Sundays, 6:30 a.m.
Sewing with Nancy – Saturdays, 5:00 p.m.
Sew It All – Saturdays, 5:30 p.m. (ends 5th)
Sit and Be Fit – Monday, Wednesday, Friday, 12:00 noon
Song of the Mountains – Thursdays, 8:00 p.m. (8:30 p.m. on 10th)
Star Gazers – Wednesdays, 11:57 p.m.; Saturdays, 10:57 a.m./9:57 p.m.;
Sundays, 2:57 p.m./11:57 p.m.; Mondays, 10:27 p.m.
Taste of History – Thursdays, 11:30 a.m.
This Old House – Saturdays, 3:30 p.m.; Wednesdays, 10:30 p.m.
Travel Detective – Sundays, 6:30 p.m.
Vicar of Dibley – Saturdays, 8:00 p.m.
Victory Garden – Saturdays, 10:30 a.m.
Washington Week – Fridays, 8:00 p.m. (except 4th)
Welcome to My Studio – Thursdays, 12:30 p.m.; Saturdays, 4:30 p.m.
Well Read – Sundays, 2:30 p.m.
Woodsongs – Thursdays, 10:00 p.m. (except 10th)
Woodturning Workshop – Wednesdays, 11:30 a.m.;
Saturdays, 6:00 a.m.
You Should Know – Tuesdays, 9:00 p.m.

Special Programs

Al Capone: Icon – Tuesday, 22nd, 7:00 p.m.
Capitol Fourth 2014 – Friday, 4th, 8:00 p.m.
History Detectives Special Investigations (4 Pts.) –
Tuesdays, 8:00 p.m. (ends 22nd);
Fridays, 9:00 p.m. (9:30 p.m. on 4th; ends 25th)
Last Tango in Halifax – Sundays, 7:00 p.m.
Life on the Line – Sundays, 12:00 noon (begins 6th)
Little League: A History – Monday, 21st, 9:00 p.m.
Live from the Artists Den "Tim McGraw" – Monday, 7th, 9:00 p.m.;
Thursday, 10th, 10:00 p.m.
Mark Twain (2 Pts.) – (Pt. 1, 2 hrs.) Tuesday, 29th, 7:00 p.m.;
(Pt. 2, 2 hrs.) Tuesday, August 5th, 7:00 p.m.
My Wild Affair (4 Pts.) – Wednesdays, 7:00 p.m. (begins 16th);
Saturdays, 11:00 p.m. (begins 19th)
POV (Point of View) –
"My Way to Olympia" – Sunday, 20th, 11:00 p.m.
"Dance for Me" – Sunday, 27th, 10:00 p.m.
Prayers of the Ancient Ones – Sunday, 6th, 12:30 p.m.
Primary Concern – Monday 14th, 9:00 p.m.
Running of the Bulls – Sunday, 13th, 11:00 p.m.;
Monday, 28th, 9:00 p.m.
Secrets of the Dead –
"Bones of the Buddha" – Wednesday, 2nd, 9:00 p.m.;
Sunday, 6th, 10:00 p.m.
"The Mona Lisa Mystery" – Wednesday, 9th, 9:00 p.m.;
Sunday, 13th, 10:00 p.m.; Sunday, 27th, 10:00 a.m.
Sex in the Wild (4 Pts.) – Wednesdays, 9:00 p.m. (begins 16th)
Shirley Temple: America's Little Darling – Sunday, 20th, 10:00 p.m.
Sum Total of Our Memory: Facing Alzheimers Together –
Sunday, 27th, 11:30 p.m.
Sunshine by the Stars: Celebrating Louisiana Music –
Sunday, 6th, 11:00 p.m.
Time Scanners (3 Pts.) – Tuesdays, 7:00 p.m. (begins 1st, ends 15th);
Sundays, 10:00 a.m. (begins 6th; ends 20th)
Vicious – Sundays, 9:30 p.m.;
Fridays, 11:30 p.m. (12:00 midnight on August 1st)

Q2·3 Program Guide

THE MAGAZINE FOR THE FRIENDS OF PUBLIC BROADCASTING JULY 2014

Q2-3 Program Guide is published each month by the Broadcast Center, a non-profit public service division of Eastern New Mexico University.

Q2-3 Program Guide (Cue to 3) is available to friends contributing \$35 per year or more to the support of public broadcasting. Senior Citizen and Student memberships are available for \$25. All contributions are tax deductible. Donations should be made payable to Friends of **KENW-TV** or to Friends of **KENW-FM** or **KMTH-FM**.

KENW-TV, Channel 3, can be seen on UHF TV analog translators in the following areas:

Carlsbad - Channel 49; Ruidoso - Channel 49
Tucumcari - Channel 32; Ft. Sumner - Channel 34.

KENW-TV digital transmitters are located in: Artesia; Carlsbad; Ft. Sumner; Hobbs; Portales/Clovis; Roswell; Tucumcari; Ruidoso.

KENW-FM, 89.5 MHz, Portales; **KMTH-FM**, 98.7 MHz, Maljamar; **KENM-FM**, 88.9 MHz, Tucumcari; **NM**; **KENU-FM**, 88.5 MHz, Des Moines, NM; **KENG-FM**, 88.5 MHz; Ruidoso, NM; **KENE-FM**, 88.1 MHz, Raton, and FM translators in:

Apache Springs - 90.9 MHz Midland, TX - 99.5 MHz
Clayton - 93.5 MHz Montoya - 90.7 MHz
Conchas Dam - 88.3 MHz Roswell - 91.1 MHz
Des Moines - 106.1 MHz Ruidoso - 89.3 MHz
Ft. Sumner - 91.7 MHz Wagon Mound - 92.1 MHz
Las Vegas - 107.1 MHz

Telephone: From Cannon A.F.B., Clovis, Portales, and Roosevelt County, call (575) 562-2112. Others, call toll-free 1-888-FOR-KENW (367-5369).

Mailing Address:

KENW-TV/FM
52 Broadcast Center, ENMU
1500 South Avenue K
Portales, NM 88130

Web site: www.kenw.org

E-Mail: kenw@enmu.edu — kenwfm@enmu.edu

Fax: (575) 562-2590

We always welcome your comments and/or suggestions:

Toll-free 1-888-FOR-KENW (367-5369)

4. **“The Mona Lisa Mystery”** on **Secrets of the Dead** attempts to answer the question: is the Mona Lisa the world knows so well the original version of the iconic portrait?
History Detectives Special Investigations is a new four-part series that explores some of America’s most intriguing mysteries, including the disappearance of Glenn Miller and who killed Jimmy Hoffa.
5. **Time Scanners**, a new three-part series, uses cutting-edge technology to ‘read’ buildings, ruins, and landscapes from the ancient world.
David Suchet reprises his signature role as the suave Belgian sleuth on **“Poirot Season 12”** airing on **Masterpiece Mystery!**
“Separate and Unequal” on **Frontline** focuses on a group of mostly white parents in Baton Rouge, La, who are trying to form their own separate school district, leaving behind a population of black students.
Running of the Bulls explores the history and cultural relevance of this centuries-old tradition that attracts people from all over the world every July.
6. **Primary Concern** describes the critical shortage of doctors in America in bleak terms—an estimated shortage of 63,000 doctors by 2015, a number that could double by 2025.
Little League: A History traces the 75-year history of the world’s largest organized youth sports program.
Ken Burns’ Mark Twain, a two-part four-hour special, takes viewers on a journey through Sam Clemens’ early days along the Mississippi River and then explores the other side of the writer, which includes tragedy, failure, and financial hardship.
A Capitol Fourth 2014 celebrates our country’s 238th birthday with an all-star salute.
7. **My Wild Affair**, a new four-part series, features extraordinary stories of the bonds between humans and their animal companions.
Sex in the Wild, also a new four-part series, includes amazing footage of animal births and mating behavior along with jaw-dropping revelations.
P.O.V. presents **“Dance for Me,”** a look at professional ballroom dancing in Denmark and the importance of finding the right dance partner.

Q2·3 Program Guide Staff

Editor: **Linda Stefanovic**
Assistant Editor: **Jenifer Baca**
Program Log Descriptions: **Karen Leonhardt**
Printing: **University Press**

Eastern New Mexico University is an affirmative action and equal opportunity employer. The University does not discriminate on the basis of race, color, national origin, sex, or handicap in its programs, activities, or employment. Persons seeking additional information about the University’s nondiscrimination policy should contact the Executive Director of Planning & Analysis, ENMU, Station #2, Portales, NM 88130.

ENMU BOARD OF REGENTS

President
Ms. Jane Christensen
Vice President
Mr. Chad Lydick
Secretary/Treasurer
Mr. Chase Sturdevant
Members
Mr. Randy Harris
Mr. Brett Leach

EASTERN NEW MEXICO UNIV.

President
Dr. Steven G. Gamble
Vice President for Academic Affairs
Dr. Jamie Laurenz
Vice President for Univ. Relations and Enrollment Services
Ms. Ronnie Birdsong
Vice President for Business Affairs
Mr. Scott Smart
Vice President for Student Affairs
Dr. Judith Haislett

BROADCAST CENTER STAFF

Director of Broadcasting
Duane W. Ryan
Business Manager
Terri Doerr
Accountant
Karen Leonhardt
Director of Engineering
Jeff Burmeister
Engineers
Rick Counts
Porfirio Delgado
Martin Quintero
Engineering Consultant
Jim Zupancic

Production/Community Services Consultant
Don Criss
Development Officer
Sheryl Borden
Programming Consultant
Linda Stefanovic
Director of Programming
Jenifer Baca
Director of Operations
Orlando Ortega
Development/Promotion Director
Rena Garrett

KENW-TV STAFF

Administrative Assistant
Vickie Brisco
Producer/Director, TV
Richard Rivera
Master Control Operators, TV
Sean Moore
Justin Robertson
Kevin Bertram
David Asplund

KENW/KMTH-FM STAFF

News Director, FM
Janet Lyn Bresenham
Development Director, FM
Amie Griffith
Operations Director, FM
Shannon Hearn
Audio Engineer
Mickey Morgan
Administrative Assistant
Suzanne West

BROADCAST CENTER STUDENT STAFF EMPLOYEES

Freddy Canales
Molly Chavez
Josh Bellin-Gallagher
Peter Garcia
Zak Paneral
C. J. Rogers
Brooke Williams

“THE MONA LISA MYSTERY”

It is the most famous painting in the world, created by the hand of a genius, and marveled at by millions every year in the Louvre in Paris. But the Mona Lisa has a secret history. Using sophisticated scientific analysis we could now solve one of the greatest mysteries in art history: is the Mona Lisa the world knows so well the original version? Or had Leonardo da Vinci painted an earlier version of the iconic portrait?

In September 2012, headline news shook the art world. A secret Leonardo da Vinci painting had been uncovered—the so-called “Isleworth Mona Lisa”—a portrait of a younger and more beautiful Mona Lisa that predated the famous Louvre masterpiece. Now, in “The Mona Lisa Mystery” on **Secrets of the Dead**, an elite group of art historians, research physicists, restoration experts, and forensic imaging specialists come together to analyze the painting first-hand. Applying high-precision, scientific techniques, they aim to verify the painting’s date, decipher hidden mathematical codes within it, and unravel the clues that point to Leonardo’s genuine hand.

“The Mona Lisa Mystery” on **Secrets of the Dead** will be broadcast Wednesday, July 9th at 9:00 p.m., Sunday, July 13th at 10:00 p.m., and Sunday, July 27th at 10:00 a.m. On HD3-1, it can be seen Wednesday, July 9th at 9:00 p.m., Thursday, July 10th at 11:00 a.m. and 4:30 p.m., and Sunday, July 13th at 3:00 p.m.



Re-enactment: Leonardo in his studio



Re-enactment: Taking a sample of the “Isleworth Mona Lisa”

History Detectives Special Investigations

History Detectives Special Investigations delves into the past to explore some of America’s most intriguing mysteries. In each of four episodes, detectives probe a single iconic mystery from America’s past, uncovering fresh leads and information to tell captivating stories from a new angle.

Civil War Sabotage? It was one of the worst maritime disasters in U.S. history. Officially, the death toll was 1,500. Unofficially,



Detective Kaiama Glover stands in front of a Norseman bush plane, the same kind Glenn Miller boarded before his mysterious disappearance.

the count may have been far higher. When it mysteriously exploded on April 27th, 1865, the Mississippi steamboat SS Sultana was packed with Union soldiers. The war had ended that month; at every stop more and more men clamored to board the homeward-

bound ship, which blew up mid-river. What really sank the Sultana? The team investigates the stories of a Confederate agent who burned Union ships on the Mississippi and was an expert in using “coal torpedoes,” a former Union inspector’s deathbed revelation, and the possibility of the boilers’ failure.

The Disappearance of Glenn Miller. One of the most celebrated entertainers of the wartime era takes off from England in heavy fog, heading to France to entertain troops. His plane vanishes.

Glenn Miller’s disappearance is perhaps the biggest mystery and cold case of World War II.

Investigators discover that Miller’s pilot was a rank novice who had never flown over the English Channel, never mind in appalling weather; documents from a Lancaster bomber pilot support another possible accounting of the plane’s disappearance; and a 17-year old plane spotter’s notebook—discovered in 2012 at a UK Antiques Roadshow—answers a question that has long baffled investigators: which route did Miller’s aircraft take?

Texas Servant Girl Murders In 1885, six African-American servants and two white society women were killed in Austin, Texas—almost all bludgeoned with an ax, dragged from their beds, and raped. No killer was ever identified. Desperate to find someone to blame, the authorities first rounded up hundreds of black men. Later, they pointed the finger at a white man, James Philips, whom they accused of murdering his teenage bride. The **History Detectives** pore over the records and apply cutting-edge police techniques to determine who really killed the servant girls of Austin.

Who Killed Jimmy Hoffa? In one of history’s most fascinating unsolved mysteries, former Teamsters president Jimmy Hoffa went missing on July 30th, 1975, never to be found. Hoffa, a hero to many working Americans, played a major role in the growth and development of the trucking union. But he fell afoul of the law, with allegations that the powerful pension fund was under mob control.

What exactly happened to Hoffa that day, and why? Recently declassified FBI files allow a detailed accounting of what likely occurred.

History Detectives Special Investigations airs Tuesdays at 8:00 p.m. beginning July 1st and repeats Fridays at 9:00 p.m. (9:30 p.m. on July 4th). On HD3-1, it airs Tuesdays at 8:00 p.m. beginning July 1st and repeats Wednesdays at 7:00 a.m. and 1:00 p.m. (1:30 p.m. on 9th), Saturdays at 4:00 p.m., and Sundays at 12:30 p.m.

TIME SCANNERS

With cutting-edge technology that can “read” buildings, ruins, and landscapes from ancient worlds, **Time Scanners**, a three-part series, reveals physical and forensic history, allowing viewers to reach out and touch the past.

The **Time Scanners** team travels first to Egypt to scan the pyramids—the tombs of the mighty pharaohs—to find out how the necropolis evolved from simple mud-brick structures to the most impressive buildings in the ancient world. They use their cutting-edge laser technology to scan Djoser’s Step Pyramid at Saqqara; Meidum’s collapsed pyramid; the mysterious Bent Pyramid at Dashur; and the famous Great Pyramid at Giza.



The scanning team looks up at the Monastery, the largest monument at Petra, Jordan.

Structural engineer Steve Burrows then takes his team of laser-scanning experts to St Paul’s Cathedral in the heart of London. They venture inside the majestic dome to explore its groundbreaking three-part structure; determine how the cathedral’s architect, Sir Christopher Wren, overcame unstable foundations and immense structural forces to support his dome; and investigate how the cathedral survived a direct hit by a German bomb during the London Blitz. The laser scans produce genuine revelations and give the team new insight into this iconic architectural masterpiece.

Finally, the team of laser-scanning experts head for Jordan to scan the ancient desert city of Petra. Using 3D laser-scanning technology, they want to uncover its construction secrets and shed new light on this architectural wonderland lost to the West for more than 1,000 years.

Time Scanners airs Tuesdays at 7:00 p.m. beginning July 1st. The series repeats Sundays at 10:00 a.m. beginning July 6th. On HD3-1, it airs Tuesdays at 7:00 p.m. and 12:00 midnight beginning July 1st and repeats Wednesdays at 6:00 a.m. and 12:00 noon (12:30 p.m. on 9th).

MASTERPIECE MYSTERY!

Poirot Season 12

David Suchet returns to **Masterpiece Mystery!** in his role as suave Belgian super-sleuth Hercule Poirot in two new thrillers, “The Big Four” and “Dead Man’s Folly,” based on the novels by Agatha Christie. Whether he’s on holiday abroad, taking a countryside break, or simply going about his business, Poirot exercises his “little grey cells” by helping police investigate crimes and murders, whether they ask for his help or not.



David Suchet reprises his role as Belgian super-sleuth Hercule Poirot.

“The Big Four” plunges Poirot into a world of global espionage, set against the backdrop of the impending WWII. The public is in a panic after the shocking death of a Russian chess grandmaster. With the help of old friends Captain Hastings, Inspector Japp, and Miss Lemon, Poirot must navigate international figures and intrigue to identify the culprit.

In “Dead Man’s Folly,” a wealthy financier and his wife stage a grand party at their new summer home. Poirot is a reluctant guest, urged to attend by his old friend Ariadne Oliver (Zoë Wanamaker), who suspects the “murder hunt” game she is preparing may turn out to be a real murder.

“Poirot Season 12” on **Masterpiece Mystery!** airs Sundays at 8:00 p.m. beginning July 27th and repeats Fridays at 10:00 p.m. (11:00 p.m. on August 1st). On HD3-1, it airs Sundays at 8:00 p.m. and 12:00 midnight beginning July 27th and repeats Mondays at 7:00 a.m. and 1:00 p.m.

FRONTLINE

“Separate and Unequal”

Sixty years after the Supreme Court declared separate schools for black and white children unconstitutional, **Frontline** examines the comeback of segregation in America. “Separate and Unequal” focuses on Baton Rouge, Louisiana, where a group of mostly white parents are trying to form their own city with its own separate school district, leaving behind a population of black students.

Through the battle in Baton Rouge, **Frontline** shows the growing racial divide in American schools and the legacy of Brown v. Board of Education.

Also this hour, **Frontline** updates the story of Omarina Cabrera, a struggling student from the Bronx who today is excelling at an elite prep school in New England because of a groundbreaking program to stem the high school dropout crisis. Drawing on the 2012 film, *Middle School Moment*, **Frontline** follows Omarina’s achievements and challenges, and shows the contrasts to her twin brother, who has remained in the Bronx.

“Separate and Unequal” on **Frontline** airs Tuesday, July 15th at 10:00 p.m. and repeats Thursday, July 17th at 7:00 p.m. On HD3-1, it airs Tuesday, July 15th at 9:00 p.m. and Wednesday, July 16th at 11:00 a.m. and 4:30 p.m.

Running of the Bulls

Each July, during the eight-day festival of San Fermin, thousands participate in one of the most dangerous and adrenaline-charged events in the world—the running of the bulls. This frantic sprint through the narrow, cobblestoned streets of Pamplona amounts to little more than 900 yards, and lasts roughly three minutes, but each moment brims with intensity and excitement.



Running of the Bulls explores the history and cultural relevance of this centuries-old tradition that attracts people from all over the world. Long-time participants explain why they run in a race with a well-earned reputation for causing serious injury, and even death.

Cameras suspended on cables above the streets capture spectacular images that immerse viewers in the experience. Archival footage provides historical context on the evolution of the Festival of San Fermin from its beginnings as a local celebration to the now-famous phenomenon.

Running of the Bulls airs Sunday, July 13th at 11:00 p.m. and Monday, July 28th at 9:00 p.m. On HD3-1, it airs Wednesday, July 2nd at 8:00 a.m. and 2:00 p.m.

PRIMARY CONCERN

Where have all the doctors gone?

Primary Concern provides a deeper understanding of the challenges impacting our national healthcare system due to the looming shortage of primary care physicians in the United States. As the film details the precarious health care precipice in America in all its complexities, it also shares the profound stories of doctors who are on the front lines serving their communities with compassion and perseverance against enormous odds.

A microcosm of what's happening all across America can be seen in the critical shortage of physicians in Georgia. It is the 9th most populous state and the 5th fastest growing state in the nation. Yet, without changes in the state's medical education system, Georgia will rank last in the United States in physicians per capita by 2020.

The prognosis worsens for shortages in primary care throughout the U.S. There are more patients waiting to see fewer and fewer doctors. The Association of American Medical Colleges projects that by 2015, the U.S. will be 63,000 doctors short of the number we need. And that number could double by 2025.

Adding more concern to the issue, a dangerous demographic shift is occurring where baby boomers and the health care workforce are aging simultaneously. This influx of an additional 30 million people seeking access to care who will be covered by the Affordable Care Act, and very few medical students going into primary care and not enough residencies for those who actually do, will cause an enormous strain on the overall healthcare system.

Primary Care will be broadcast Monday, July 14th at 9:00 p.m.



Little League: A History

Narrated by legendary baseball broadcaster Vin Scully, **Little League: A History** traces the 75-year history of the world's largest organized youth sports program, from its humble beginnings in Williamsport, PA, to its current status as a worldwide phenomenon.

Past and present Little League players, administrators, coaches, umpires, and others reflect on the role Little League played on their lives. Notable interviewees include President George W. Bush, NASA Space Shuttle Commander Story Musgrave, and Major League Baseball (MLB) Commissioner Allan "Bud" Selig.

Little League: A History also includes interviews with the family members of Little League founder Carl Stotz, and Carolyn King, whose 1973 lawsuit against Little League contributed to the league's landmark policy reversal of prohibiting girls from playing Little League Baseball.

Little League: A History can be seen Monday, July 21st at 9:00 p.m. On HD3-1, it will be broadcast Monday, July 7th at 9:00 p.m. and Tuesday, July 8th at 8:00 a.m. and 2:00 p.m.



A Capitol Fourth, 2014, America's national Independence Day celebration, kicks off the festivities for our country's 238th birthday with an all-star salute led by our country's favorite host, television personality Tom Bergeron ("Dancing With the Stars"). Broadcast live on PBS from the West Lawn of the U.S. Capitol, the event features performances by Frankie Valli, Patti LaBelle, Jordin Sparks, Michael McDonald, Sara Evans, Kendall Schmidt, and Kelli O'Hara, along with the National Symphony Orchestra.

In celebration of the 200th anniversary of our national anthem, composer John Williams debuts a special arrangement for orchestra and chorus of the "Star Spangled Banner" with the National Symphony Orchestra.

A Capitol Fourth 2014 will be broadcast Friday, July 4th at 8:00 p.m. On HD3-1, it airs Friday, July 4th at 7:00 p.m. and 12:00 midnight and Saturday, July 5th at 8:00 p.m.

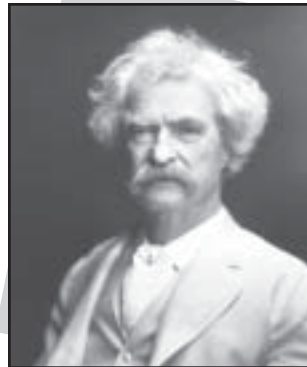
Ken Burns'

MARK TWAIN

In his time, Mark Twain was considered the funniest man on earth. Yet he was also an unflinching critic of human nature, using his humor to attack hypocrisy, greed, and racism. In **Mark Twain**, a two-part, four-hour documentary, Ken Burns creates an illuminating portrait of one of the greatest writers in American history.

Ken Burns first takes viewers on a journey through Sam Clemens' early days along the Mississippi River, to the small river town of Hannibal, Missouri. Clemens grows up, stumbling from adventure to adventure until he begins to evolve into Mark Twain, the humorist and writer who would revolutionize the way Americans viewed themselves and their language. The first episode ends with the publication of *Adventures of Huckleberry Finn*, a novel that has been banned in hundreds of libraries and schools across the country ever since.

In part two, Burns explores the other side of the writer—an American icon who, through tragedy and bad financial decisions,



Sam Clemens

falls hard with failure. In contrast to the wildly successful Twain, Clemens is an inept businessman who squanders his fortunes on pipe dream patents and bad investments. Clemens turns to the lecture circuit and tours extensively, leaving behind his beloved Hartford home and, often, his family, to pay off his creditors.

Mark Twain will be broadcast Tuesday, July 29th at 7:00 p.m. (Pt. 1) and Tuesday, August 5th at 7:00 p.m. (Pt. 2). On HD3-1, Part 1 airs Tuesday, July 29th at 7:00 p.m. and 12:00 midnight and repeats Wednesday, July 30th at 6:00 a.m. and 12:00 noon.



Chantek is shown at 9 months old.

My Wild Affair

My Wild Affair, a four-part series, features extraordinary stories of the bonds between humans and their animal companions, including an orphaned baby elephant, an orangutan raised as a human child, a rhinoceros raised in suburbia, and a harbor seal that entered the human world but remained wild at heart.

“The Elephant Who Found a Mom” is the heartbreaking story of Aisha, the baby elephant orphan, and Daphne Sheldrick, the woman who became her human foster parent. Their intense bond

reaches a crisis point when Daphne leaves Aisha with a babysitter for a few days to attend her daughter’s wedding. Aisha believes she has lost Daphne for good and refuses to eat, leading to her death. Heartbroken, Daphne uses the lessons learned from Aisha’s short life to help her save more than 150 orphans over the next 40 years.

“The Ape Who Went to College” is the incredible story of Chantek, the orangutan raised as a human child on an American university campus during the 70s and 80s. Taught to speak in sign language, he is now living among his own kind at Zoo Atlanta, although he describes himself as an “orangutan person.”

Rescued from flooding caused by the damming of the Zambezi River, Rupert, an orphaned black rhinoceros, was brought up in the suburban family home of wildlife vet Dr. John Condy. Rupert, “The Rhino Who Joined the Family,” captured the hearts of the vet’s four young children before his eventual release into the wild. Fifty years later, the children are searching for clues to their childhood friend’s fate.

“The Seal Who Came Home” is the true story of Andre, a two-day-old wild harbor seal who, in 1961, was rescued from certain death by Harry Goodridge, an arborist from Rockport, Maine. Over the next 25 years, Andre and Harry established a friendship that brought Andre into the world of humans without Andre’s ever having to sacrifice his wildness. The human world gave Andre shelter during the harsh New England winter, but staying wild at heart meant Andre had the know-how to make the 200-mile swim home to Rockport. This interspecies friendship weathered every kind of challenge, including, at the end, Andre’s blindness.

My Wild Affair will be broadcast Wednesdays at 7:00 p.m. beginning July 16th and repeats Saturdays at 11:00 p.m. On HD3-1, it airs Wednesdays at 7:00 p.m. and 12:00 midnight beginning July 16th and repeats Thursdays at 7:00 a.m. and 12:00 noon, Saturdays at 11:00 p.m., and Sundays at 3:00 p.m.

Sex in the Wild

Everything you ever wanted to know (or not know) about the sex life of elephants, orangutans, kangaroos, and dolphins.

Sex in the Wild, a new four-part series, takes viewers from the Okavango Delta in Botswana to the Australian Outback, and from a Borneo rainforest to the waters of New Zealand, to study animal reproduction in vivid detail. The series includes amazing footage of animal births and mating behavior along with some jaw-dropping revelations, some of which may cause viewers to never look at elephants in quite the same way again.

Veterinary scientist Mark Evans and anatomist Dr. Joy S. Reidenberg, experts in animal reproduction, reveal the natural mat-



Mark Evans delights in the company of a baby elephant.

ing, birth, and rearing behaviors of elephants, orangutans, kangaroos, and dolphins, all while capturing rare, beautiful footage of these species in their natural habitats.

Sex in the Wild will be broadcast Wednesdays at 9:00 p.m. beginning July 16th on both 3-2 and HD3-1.

March Festival & Summerfest Raise Almost \$60,000

We are so grateful for our many viewers like you who responded with generosity to our Festival 2014 and Summerfest 2014 membership drives. Many of the programs we broadcast—30 Days to a Younger Heart, The Big Band Years, BrainChange, Healing ADD, Stand Beside Me, Celtic Woman: Emerald, and Dr. Wayne Dyer—turned out to be very popular with viewers and contributed to the success of our drives. If you missed any of these programs or would like to see them again, give us a call and let us know. We welcome viewer requests.

VOLUNTEERS

Jenifer Baca	Roger Gatchet
Adele Breech	Robin Gold
Vickie Briscoe	Romelia Hurtado
Joan Brown	de Vivas
Emily Brown	Reta Neal
Gene Bundy	Fred Patterson
Pauline Clark	Robert Smoot
Susan Cramp	Dale Streeter
Terri Doerr	Dolores Turner
Janine Elder	Robin Wells
Geni Flores	Bill Wood
Kaitlin Garrett	Ruth Wood

Dance for Me

Professional ballroom dancing is very big in little Denmark. Since success in this intensely competitive art depends on finding the right partner, aspiring Danish dancers often look beyond their borders to find their matches. In “Dance for Me” on **P.O.V.**, 15-year-old Russian performer Egor leaves home and family to team up with 14-year-old Mie, one of Denmark’s most promising young dancers. Strikingly different, Egor and Mie bond over their passion for Latin dance—and for winning.

As they head to the championships, so much is at stake: emotional bonds, career, and the future. “Dance for Me” is a poetic coming-of-age story, with a global twist and thrilling dance moves.

“Dance for Me” on **P.O.V.** airs Sunday, July 27th at 10:00 p.m. On HD3-1, it airs Monday, July 21st at 8:00 p.m., Tuesday, July 22nd at 7:00 a.m. and 1:00 p.m., and Saturday, July 26th at 8:30 p.m.



Egor and Mie



◆ KENW-TV's DAYTIME SCHEDULES ◆

Kids' Programming, How-to's, and Family Viewing

3-2 (SD) is your regular KENW-TV channel. Channels 3-1 (HD) and 3-3 (SD) require a digital television or a converter box, both with antennas.

Channel 3-2

Monday through Friday

- 6:00 am Classical Stretch
- 6:30 am BBC World News
- 7:00 am Sesame Street
- 8:00 am Dinosaur Train
- 8:30 am Peg + Cat
- 9:00 am SuperWhy!
- 9:30 am Daniel Tiger's Neighborhood
- 10:00 am Sid the Science Kid
- 10:30 am WordWorld (M)
- Peep & the Big Wide World (Tu)
- Angelina Ballerina (W)
- Signing Time! (Th)
- Mister Rogers (F)
- 11:00 am America's Test Kitchen (M)
- Martha Stewart's Cooking School (Tu)
- New Fly Fisher (W)
- American Woodshop (Th)
- Bob the Builder (F)
- 11:30 am Sara's Weeknight Meals (M)
- Knitting Daily (Tu)
- Woodturning Workshop (W)
- Taste of History V (Th)
- Thomas & Friends (F)
- 12:00 pm Sit and Be Fit (MWF)
- Creative Living (TuTh)
- 12:30 pm Beads, Baubles and Jewels (M)
- Fit 2 Stitch (Tu)
- Fons & Porter's Love of Quilting (W)
- Welcome to My Studio (Th)
- Beauty of Oil Painting (F)
- 1:00 pm Curious George
- 1:30 pm Clifford the Big Red Dog
- 2:00 pm Cat in the Hat
- 2:30 pm Arthur
- 3:00 pm Martha Speaks
- 3:30 pm Wild Kratts
- 4:00 pm WordGirl
- 4:30 pm BBC World News America
- Charlie Rose: The Week (M)
- 5:00 pm Scully/The World Show (Tu)
- Religion & Ethics Newsweekly (W)
- European Journal (Th)
- BBC Newsnight (F)
- 5:30 pm Nightly Business Report
- 6:00 pm PBS NewsHour

Channel 3-3

Monday through Friday

- 6:00 am Curious George
- 6:30 am Cat in the Hat
- 7:00 am Peg + Cat
- 7:30 am Dinosaur Train
- 8:00 am Sesame Street
- 9:00 am Daniel Tiger's Neighborhood
- 9:30 am Sid the Science Kid
- 10:00 am SuperWhy
- 10:30 am Thomas & Friends
- 11:00 am Caillou
- 11:30 am Clifford the Big Red Dog
- 12:00 pm Mister Rogers (M)
- Peep & the Big Wide World (Tu)
- Biscuit Brothers (W)
- Signing Time! (Th)
- Maya & Miguel (F)
- 12:30 pm Bob the Builder (M)
- Barney & Friends (Tu)
- Angelina Ballerina (W)
- WordWorld (Th)
- Space Racers (F)
- 1:00 pm Sid the Science Kid
- 1:30 pm Martha Speaks
- 2:00 pm Arthur
- 2:30 pm WordGirl
- 3:00 pm Wild Kratts
- 3:30 pm Peg + Cat
- 4:00 pm Dinosaur Train
- 4:30 pm WordWorld (M)
- Angelina Ballerina (Tu)
- Bob the Builder (W)
- Curious George (Th)
- Mixed Nutz(F)
- 5:00 pm Signing Time! (M)
- Biscuit Brothers (Tu)
- Peep & the Big Wide World (W)
- Hands on Crafts for Kids (Th)
- Twice As Good (F)
- 5:30 pm Imagination Station (M)
- Dragonfly TV (Tu)
- Biz Kid\$ (W)
- Curiosity Quest (Th)
- Hands on Crafts for Kids (F)
- 6:00 pm Cat in the Hat
- 6:30 pm SuperWhy!
- 7:00 pm Arthur
- 7:30 pm WordGirl
- 8:00 pm Wild Kratts
- 8:30 pm Martha Speaks

Saturday

- 6:00 AM Peg + Cat
- 6:30 am Dinosaur Train
- 7:00 am Thomas & Friends
- 7:30 am Angelina Ballerina
- 8:00 am Bob the Builder
- 8:30 am Sid the Science Kid
- 9:00 am SuperWhy
- 9:30 am Arthur
- 10:00 am Electric Company
- 10:30 am Dragonfly TV
- 11:00 am WordGirl
- 11:30 am Cyberchase
- 12:00 pm Wild Kratts
- 12:30 pm Maya & Miguel
- 1:00 pm Curious George
- 1:30 pm Cat in the Hat
- 2:00 pm Peep & the Big Wide World
- 2:30 pm WordWorld
- 3:00 pm Caillou
- 3:30 pm Clifford the Big Red Dog
- 4:00 pm Peg + Cat
- 4:30 pm Biscuit Brothers
- 5:00 pm Biz Kid\$
- 5:30 pm Martha Speaks
- 6:00 pm Wild Kratts
- 6:30 pm Imagination Station
- 7:00 pm Curiosity Quest
- 7:30 pm Dragonfly TV
- 8:00 pm Signing Time!
- 8:30 pm Electric Company

Sunday

- 6:00 am Peg + Cat
- 6:30 am Dinosaur Train
- 7:00 am Daniel Tiger's Neighborhood
- 7:30 am SuperWhy!
- 8:00 am Sid the Science Kid
- 8:30 am Arthur
- 9:00 am Wild Kratts
- 9:30 am Martha Speaks
- 10:00 am Cyberchase
- 10:30 am Electric Company
- 11:00 am Imagination Station
- 11:30 am Hands on Crafts for Kids
- 12:00 pm Curiosity Quest
- 12:30 pm Biz Kid\$
- 1:00 pm Bali
- 1:30 pm Signing Time!
- 2:00 pm Biscuit Brothers
- 2:30 pm Peg + Cat
- 3:00 pm SuperWhy!
- 3:30 pm Curious George
- 4:00 pm Cat in the Hat
- 4:30 pm Peep & the Big Wide World
- 5:00 pm WordWorld
- 5:30 pm Caillou
- 6:00 pm Clifford the Big Red Dog
- 6:30 pm Bob the Builder
- 7:00 pm Thomas & Friends
- 7:30 pm Angelina Ballerina
- 8:00 pm Dragonfly TV
- 8:30 pm Biz Kid\$

Channel 3-1

Saturday

- 5:00 am Barney & Friends
- 5:30 am Angelina Ballerina
- 6:00 am Curious George
- 6:30 am Cat in the Hat
- 7:00 am Peg + Cat
- 7:30 am Dinosaur Train
- 8:00 am Daniel Tiger's Neighborhood
- 8:30 am SuperWhy
- 9:00 am Thomas & Friends
- 9:30 am Bob the Builder

Sunday

- 5:00 am Sesame Street
- 6:00 am Curious George
- 6:30 am Cat in the Hat
- 7:00 am Peg + Cat
- 7:30 am Dinosaur Train
- 8:00 am Daniel Tiger's Neighborhood
- 8:30 am SuperWhy
- 9:00 am Sid the Science Kid
- 9:30 am Wild Kratts
- 10:00 am Arthur
- 10:30 am Martha Speaks
- 11:00 am WordGirl
- 11:30 am Electric Company
- 12:00 pm Cyberchase

KENW TV SCHEDULES 3-1 (HD), 3-2 (SD) AND 3-3 (SD)

Our regular KENW-TV Channel (3-2) is listed below in bold. It can be seen by those who use cable or one of our analog translators listed on page 3. Schedule 3-1 is our High Definition (HD) Channel and 3-3 is our Children's/Encore Standard Definition (SD) Channel. Those with either digital TV sets or analog sets with converter boxes (both sets require antennas) can receive all three channels in most parts of our viewing area. KENW-TV has digital transmitters in the following cities: Clovis/Portales; Hobbs/Lovington; Roswell; Artesia; Fort Sumner; Tucumcari; Carlsbad; and now Ruidoso.

KENW-TV's 3-1 schedule (below in italics) is carried by DirecTV in most counties of New Mexico.
KENW-TV's 3-2 schedule (below in bold) is carried on Dish Network in most counties of New Mexico.

Tuesday 1st

5:00 3-1 *Classical Stretch*
 5:30 3-1 *Wai Lana Yoga*
 6:00 3-1 *Antiques Roadshow*
 7:00 3-1 *Prayers of the Ancient One*
 8:00 3-1 *I Am*
 9:00 3-1 *Healthy Body Healthy Mind*
 9:30 3-1 *Second Opinion*
 10:00 3-1 *Closer to Truth*
 10:30 3-1 *Religion & Ethics Newsweekly*
 11:00 3-1 *Song of the Mountains*
 12:00 3-1 *Antiques Roadshow*
 1:00 3-1 *Prayers of the Ancient One*
 2:00 3-1 *I Am*
 3:00 3-1 *Arts in Context*
 3:30 3-1 *Life Focus*
 4:00 3-1 *Consuelo Mack WealthTrack*
 4:30 3-1 *Scully/The World Show*
 5:00 3-1 *Report from Santa Fe*
 5:30 3-1 *Nightly Business Report*
 6:00 3-1 *PBS NewsHour*
 7:00 **Time Scanners** "Egyptian Pyramids"
 3-1 *Time Scanners*
 8:00 **History Detectives Special**
 "Civil War Sabotage"
 3-1 *History Detectives Special*
 9:00 **You Should Know**
 3-1 *Frontline*
 3-3 *Charlie Rose*
 9:30 **Creative Living**
 10:00 **Frontline** "To Catch a Trader"
 3-1 *Charlie Rose*
 3-3 *Time Scanners*
 11:00 **Charlie Rose**
 3-1 *Tavis Smiley*
 3-3 *History Detectives Special*
 12:00 **PBS NewsHour**
 3-1 *Time Scanners*
 3-3 *Running of the Bulls*

Wednesday 2nd

5:00 3-1 *Classical Stretch*
 5:30 3-1 *Wai Lana Yoga*
 6:00 3-1 *Time Scanners*
 7:00 3-1 *History Detectives Special*
 8:00 3-1 *Running of the Bulls*
 9:00 3-1 *Travel Detective*
 9:30 3-1 *Getting Away Together*
 10:00 3-1 *American Woodshop*
 10:30 3-1 *Woodturning Workshop*
 11:00 3-1 *Frontline*
 12:00 3-1 *Time Scanners*
 1:00 3-1 *History Detectives Special*
 2:00 3-1 *Running of the Bulls*
 3:00 3-1 *Firehouse Kitchen*
 3:30 3-1 *America's Test Kitchen*
 4:00 3-1 *Ecosense for Living*
 4:30 3-1 *Frontline*
 5:30 3-1 *Nightly Business Report*

6:00 3-1 *PBS NewsHour*
 7:00 **Nature** "Salmon: Running the Gauntlet"
 3-1 *Nature*
 8:00 **Nova** "Ghosts of Murdered Kings"
 3-1 *Nova*
 9:00 **Secrets of the Dead**
 "Bones of the Buddha"
 3-1 *Secrets of the Dead*
 3-3 *Charlie Rose*
 10:00 **Healthy Body Healthy Mind**
 "Science of Inflammatory Bowel Disease"
 3-1 *Charlie Rose*
 3-3 *Nature*
 10:30 **This Old House**
 11:00 **Charlie Rose**
 3-1 *Tavis Smiley*
 3-3 *Nova*
 11:57 **Star Gazers**
 12:00 **PBS NewsHour**
 3-1 *Nature*
 3-3 *Secrets of the Dead*

Thursday 3rd

5:00 3-1 *Classical Stretch*
 5:30 3-1 *Wai Lana Yoga*
 6:00 3-1 *Moyers & Company*
 6:30 3-1 *Charlie Rose: The Week*
 7:00 3-1 *Nature "Salmon"*
 8:00 3-1 *Nova*
 9:00 3-1 *Fons & Porter's Quilting*
 9:30 3-1 *Quilt in a Day*
 10:00 3-1 *Knitting Daily*
 10:30 3-1 *Fit 2 Stitch*
 11:00 3-1 *Secrets of the Dead*

12:00 3-1 *Nature "Salmon"*
 1:00 3-1 *Nova*
 2:00 3-1 *Richard Bangs' South America*
 3:00 3-1 *In the Americas*
 3:30 3-1 *Front and Center*
 4:30 3-1 *Secrets of the Dead*
 5:30 3-1 *Nightly Business Report*
 6:00 3-1 *PBS NewsHour*
 7:00 **Frontline** "To Catch a Trader"
 3-1 *Song of the Mountains*
 8:00 **Song of the Mountains**
 3-1 *Red Green Show*
 8:30 3-1 *In Good Shape*
 9:00 **The Farm with Ian Knauer**
 "Making Your Own BLT and Beer"
 3-1 *Creative Living*
 3-3 *Charlie Rose*
 9:30 **Red Green Show** "The Chainsaw Races"
 3-1 *You Should Know*
 10:00 **Woodsongs** "Nikki Hill and Rick Estrin & the Nightcats"
 3-1 *Charlie Rose*
 3-3 *Moyers & Company*
 10:30 3-3 *Scully/The World Show*
 11:00 **Charlie Rose**
 3-1 *Tavis Smiley*
 3-3 *Frontline*
 12:00 **PBS NewsHour**
 3-1 *This Old House Hour*
 3-3 *Richard Bangs' South America*

Friday 4th

5:00 3-1 *Classical Stretch*
 5:30 3-1 *Wai Lana Yoga*

KENW-TV on Cable Companies

KENW-TV's 3-1 (High Definition, HD) and 3-2 (Standard Definition, SD) program schedules can be seen on the following cable companies:

Dexter: Channel 3 (SD) and Channel 470 (HD), Cable One
 Hobbs: Channel 3 (SD) and Channel 703 (HD), Baja Broadband
 Portales: Channel 3 (SD), and Channel 510 (HD), Comcast Cable
 Roswell: Channel 3 (SD), and Channel 470 (HD), Cable One

KENW-TV's 3-2 Schedule (Standard Definition, SD) can be seen on the following cable companies:

Artesia: Channel 3, PVT
 Carlsbad: Channel 3, Baja Broadband
 Clovis: Channel 3, Suddenlink
 Dexter: Channel 3, PVT
 Eddy County South: Channel 3, Baja Broadband
 Eunice: Channel 3, Baja Broadband
 Farwell: Channel 3, Suddenlink
 Ft. Sumner: Channel 3, Reach Broadband

Hagerman: Channel 3, PVT
 Jal: Channel 3, Baja Broadband
 Lea County: Channel 3, Baja Broadband
 Loving: Channel 3, Baja Broadband
 Lovington: Channel 3, Comcast
 Melrose: Channel 9, Reach Broadband
 Muleshoe: Channel 5, Reach Broadband
 Texico: Channel 3, Suddenlink
 Tucumcari: Channel 11, Comcast

6:00 3-1 *America's Heartland*
 6:30 3-1 *Rhythm Abroad*
 7:00 3-1 *Song of the Mountains*
 8:00 3-1 *This Old House Hour*
 9:00 3-1 *Globe Trekker*
 10:00 3-1 *Joy of Painting*
 10:30 3-1 *Painting Wild Places*
 11:00 3-1 *Beauty of Oil Painting*
 11:30 3-1 *Welcome to My Studio*
 12:00 3-1 *Jubilee*
 1:00 3-1 *Expeditions*
 1:30 3-1 *Start Up*
 2:00 3-1 *This Old House Hour*
 3:00 3-1 *Globe Trekker*
 4:00 3-1 *Just Seen It*
 4:30 3-1 *Moyers & Company*
 5:00 3-1 *European Journal*
 5:30 3-1 *Nightly Business Report*
 6:00 3-1 *PBS NewsHour*
 7:00 **Market to Market**
 3-1 *Capitol Fourth 2014*
 7:30 **Consuelo Mack WealthTrack**
 8:00 **Capitol Fourth 2014**
 8:30 3-1 *Shirley Temple: America's Little Darling*
 9:00 3-3 *Charlie Rose*
 9:30 **History Detectives Special**
 "Civil War Sabotage"
 3-1 *Into the Wild: Edison, Ford & Friends*
 10:00 3-1 *Charlie Rose*
 3-3 *Frontline*
 10:30 **Masterpiece Mystery!**
 "Endeavour Season 2: Trove"
 11:00 3-1 *Tavis Smiley*
 3-3 *Discover Vivaldi's Four Seasons*
 12:00 **Vicious, Pt. 1**
 3-1 *Capitol Fourth 2014*
 3-3 *Nature*
 12:30 **PBS NewsHour**

Saturday 5th

6:00 **Woodturning Workshop**
 "Christmas Ornament"
 6:30 **American Woodshop** "Finish Carpentry
 Classic Crown Molding and Baseboard"
 7:00 **Rough Cut** "Federal Hall Table"
 7:30 **Sara's Weeknight Meals**
 "Italian, Philly Style"
 8:00 **America's Test Kitchen** "Best
 Barbecued Chicken and Cornbread"
 8:30 **Martha Stewart's Cooking School**
 "Potatoes"
 9:00 **Barbecue University** "Fire and Water"
 9:30 **Motorweek**
 10:00 **P. Allen Smith's Garden to Table**
 "Edible Landscaping"
 3-1 *This Old House Hour*
 10:30 **Victory Garden's Edible Feast**
 10:57 **Star Gazers**
 11:00 **Paint This with Jerry Yarnell**
 "Evening Glow, Pt. 3"
 3-1 *In Julia's Kitchen with Master Chefs*
 11:30 **Joy of Painting** "Winter Mountain"
 3-1 *Victory Garden's Edible Feast*
 12:00 **Beauty of Oil Painting** "Forest Radiance"
 3-1 *This Old House*
 12:30 **Quilt in a Day** "Double Wedding Ring"
 3-1 *This Old House*
 1:00 **Quilting Arts** "Design"
 3-1 *Ask This Old House*
 1:30 **Fons & Porter's Love of Quilting**
 "Thank You Stars"
 3-1 *Hometime*
 2:00 **Creative Living**
 3-1 *Woodwright's Shop*

2:30 **Joanne Weir's Cooking Class**
 "Summer Bean Pasta & Italian Bread
 Salad"
 3-1 *Motorweek*
 3:00 **Hometime**
 "Creekside Home Furnishings"
 3-1 *Martha Stewart's Cooking School*
 3:30 **This Old House**
 "Arlington Italianate Project 2014"
 3-1 *Martha Bakes*
 4:00 **Ask This Old House** Demonstrating
 uses for a router; replacing an air
 conditioning unit
 3-1 *History Detectives Special*
 4:30 **Welcome to My Studio** "Black Vase"
 5:00 **Sewing with Nancy** "Stress-Free
 Quilting with Machine Embroidery"
 3-1 *PBS NewsHour Weekend*
 5:30 **Sew it All** "Picnic Party"
 3-1 *PBS Previews: The Roosevelts*
 6:00 **Report from Santa Fe**
 3-1 *Antiques Roadshow*
 6:30 **America's Heartland**
 7:00 **Lawrence Welk Show**
 "Big Band Memories"
 3-1 *Marina at West Point: Unity Through
 Diversity*
 8:00 **Vicar of Dibley** "Window"
 3-1 *Capitol Fourth 2014*
 8:30 **Good Neighbors** "Pig's Lib"
 9:00 **Austin City Limits**
 "Queens of the Stone Age"
 3-3 *Lawrence Welk Show*
 9:30 3-1 *PBS Previews: The Roosevelts*
 10:00 **Nova** "Ghosts of Murdered Kings"
 3-1 *Austin City Limits*
 3-3 *Classic Gospel*
 11:00 **Nature** "Salmon: Running the Gauntlet"
 3-1 *Nature*
 3-3 *Front and Center*
 11:57 **Star Gazers**
 12:00 **Austin City Limits**
 3-1 *Nova*
 3-3 *Jubilee*

Sunday 6th

6:00 **Expeditions** "Ace Basin, a Coastal Treasure"
 6:30 **Second Opinion** "Pneumonia"
 7:00 **Antiques Roadshow** "Vintage Pittsburgh"
 8:00 **Classic Gospel** "Gaither Homecoming"
 9:00 **Joy of Music** "U.S. Air Force Academy"
 9:30 **Joy of Music** "Patriotic Celebration"
 10:00 **Time Scanners** "Egyptian Pyramids"
 11:00 **Globe Trekker** "Pacific Journeys: Tonga
 to New Caledonia"
 12:00 **Life on the Line** "Heart to Heart"
 3-1 *Love of Country, Love of People
 with the Mormon Tabernacle Choir*
 12:30 **Prayers of the Ancient Ones**
 3-1 *History Detectives Special*
 1:30 **All Aboard** "Steam in the '50s"
 3-1 *Market to Market*
 2:00 **Closer to Truth**
 "Alternative Concepts of God"
 3-1 *Religion & Ethics Newsweekly*
 2:30 **Well Read** "Mark Helprin, In Sunlight and
 in Shadow"
 3-1 *Ask This Old House*
 3:00 **Healthy Body Healthy Mind**
 "Neutropenia—The Importance of Healthy
 White Blood Cells"
 3-1 *Secrets of the Dead "Bones/Buddha"*
 3:30 **Religion & Ethics Newsweekly**
 4:00 **Classic Gospel** "Bev Shea: Then Sings
 My Soul"
 3-1 *Nova*
 5:00 **PBS NewHour Weekend**
 3-1 *PBS NewsHour Weekend*

5:30 **McLaughlin Group**
 3-1 *PBS Previews: The Roosevelts*
 6:00 **Moyers & Company**
 3-1 *Vicar of Dibley*
 6:30 **Travel Detective**
 "The Truth About Timeshares"
 3-1 *Good Neighbors*
 7:00 **Last Tango in Halifax II, Pt. 2**
 3-1 *Last Tango in Halifax II*
 8:00 **Masterpiece** "Endeavour II: Nocturne"
 3-1 *Masterpiece Mystery!*
 9:00 3-3 *Well Read*
 9:30 **Vicious, Pt. 2**
 3-1 *Vicious, Pt. 2*
 3-3 *Travel with Kids*
 10:00 **Secrets of the Dead** "Bones of the Buddha"
 3-1 *Austin City Limits*
 3-3 *Cool Spaces!*
 11:00 **Sunshine by the Stars: Celebrating
 Louisiana Music**
 3-1 *Last Tango in Halifax II, Pt. 2*
 3-3 *Masterpiece "Endeavour II: Nocturne"*
 12:00 **Nova** "Ghosts of Murdered Kings"
 3-1 *Masterpiece "Endeavour II: Nocturne"*

Monday 7th

5:00 3-1 *Classical Stretch*
 5:30 3-1 *Wai Lana Yoga*
 6:00 3-1 *Nature "Salmon"*
 7:00 3-1 *Masterpiece "Endeavour II: Nocturne"*
 8:30 3-1 *Vicious, Pt. 1*
 9:00 3-1 *Taste of History*
 9:30 3-1 *Sara's Weeknight Meals*
 10:00 3-1 *In Good Shape*
 10:30 3-1 *P. Allen Smith's Garden Home*
 11:00 3-1 *Cool Spaces!*
 12:00 3-1 *Xerox Rochester International Jazz
 Festival*
 1:00 3-1 *Masterpiece "Endeavour II: Nocturne"*
 2:30 3-1 *Vicious, Pt. 1*
 3:00 3-1 *This American Land*
 3:30 3-1 *Fishing Behind the Lines*
 4:00 3-1 *America's Heartland*
 4:30 3-1 *Cool Spaces!*
 5:30 3-1 *Nightly Business Report*
 6:00 3-1 *PBS NewsHour*
 7:00 **Antiques Roadshow** "Vintage Toronto"
 3-1 *Antiques Roadshow*
 8:00 **Antiques Roadshow**
 "Vintage Seacaucus"
 3-1 *POV "My Way to Olympia"*
 9:00 **Live from the Artists Den** "Tim McGraw"
 3-1 *Little League: A History*
 3-3 *Charlie Rose*
 10:00 **All Aboard** "Atlanta's Railroads"
 3-1 *Charlie Rose*
 3-3 *Antiques Roadshow*
 10:30 **Getting Away Together** "Park City, UT"
 11:00 **Antiques Roadshow** "Vintage Toronto"
 3-1 *Tavis Smiley*
 3-3 *POV "My Way to Olympia"*
 11:57 **Star Gazers**
 12:00 **PBS NewsHour**
 3-1 *Antiques Roadshow*
 3-3 *Little League: A History*

Tuesday 8th

5:00 3-1 *Classical Stretch*
 5:30 3-1 *Wai Lana Yoga*
 6:00 3-1 *Antiques Roadshow*
 7:00 3-1 *POV "My Way to Olympia"*
 8:00 3-1 *Little League: A History*
 9:00 3-1 *Healthy Body Healthy Mind*
 9:30 3-1 *Second Opinion*
 10:00 3-1 *Closer to Truth*
 10:30 3-1 *Religion & Ethics Newsweekly*
 11:00 3-1 *Song of the Mountains*

12:00 3-1 *Antiques Roadshow*
 1:00 3-1 *POV "My Way to Olympia"*
 2:00 3-1 *Little League: A History*
 3:00 3-1 *Arts in Context*
 3:30 3-1 *Life Focus*
 4:00 3-1 *Consuelo Mack WealthTrack*
 4:30 3-1 *Scully/The World Show*
 5:00 3-1 *Report from Santa Fe*
 5:30 3-1 *Nightly Business Report*
 6:00 3-1 *PBS NewsHour*
 7:00 **Time Scanners** "St. Paul's Cathedral"
 3-1 *Time Scanners*
 8:00 **History Detectives Special Investigation**
 "The Disappearance of Glenn Miller"
 3-1 *History Detectives Special*
 9:00 **You Should Know**
 3-1 *Frontline*
 3-3 *Charlie Rose*
 9:30 **Creative Living**
 10:00 **Frontline** "Secrets of the Vatican"
 3-3 *Time Scanners*
 10:30 3-1 *Charlie Rose*
 11:00 3-3 *History Detectives Special*
 11:30 **Charlie Rose**
 3-1 *Tavis Smiley*
 12:00 3-1 *Time Scanners*
 3-3 *Little League: A History*
 12:30 **PBS NewsHour**

Wednesday 9th

5:00 3-1 *Classical Stretch*
 5:30 3-1 *Wai Lana Yoga*
 6:00 3-1 *Time Scanners*
 7:00 3-1 *History Detectives Special*
 8:00 3-1 *Friend Indeed: The Bill Sackter Story*
 9:00 3-1 *Travel Detective*
 9:30 3-1 *Getting Away Together*
 10:00 3-1 *American Woodshop*
 10:30 3-1 *Woodturning Workshop*
 11:00 3-1 *Frontline "Vatican"*
 12:30 3-1 *Time Scanners*
 1:30 3-1 *History Detectives Special*
 2:30 3-1 *Friend Indeed: The Bill Sackter Story*
 3:30 3-1 *America's Test Kitchen*
 4:00 3-1 *Frontline*
 5:30 3-1 *Nightly Business Report*
 6:00 3-1 *PBS NewsHour*
 7:00 **Nature** "Saving Otter 501"
 3-1 *Nature*
 8:00 **Nova** "Mystery of a Masterpiece"
 3-1 *Nova*
 9:00 **Secrets of the Dead**
 "The Mona Lisa Mystery"
 3-1 *Secrets of the Dead*
 3-3 *Charlie Rose*
 10:00 **Healthy Body Healthy Mind**
 "Surviving Cancer and Cancer Toxicity"
 3-1 *Charlie Rose*
 3-3 *Nature*
 10:30 **This Old House**
 11:00 **Charlie Rose**
 3-1 *Tavis Smiley*
 3-3 *Nova*
 11:57 **Star Gazers**
 12:00 **PBS NewsHour**
 3-1 *Nature*
 3-3 *Secrets of the Dead*

Thursday 10th

5:00 3-1 *Classical Stretch*
 5:30 3-1 *Wai Lana Yoga*
 6:00 3-1 *Moyers & Company*
 6:30 3-1 *Business in Society*
 7:00 3-1 *Nature "Otter"*
 8:00 3-1 *Nova "Mystery/Masterpiece"*
 9:00 3-1 *Fons & Porter's Quilting*

9:30 3-1 *Quilt in a Day*
 10:00 3-1 *Knit and Crochet Now!*
 10:30 3-1 *Fit 2 Stitch*
 11:00 3-1 *Secrets of the Dead*
 12:00 3-1 *Nature "Otter"*
 1:00 3-1 *Nova*
 2:00 3-1 *Richard Bangs' Adventures*
 3:00 3-1 *In the Americas*
 3:30 3-1 *Front and Center*
 4:30 3-1 *Secrets of the Dead*
 5:30 3-1 *Nightly Business Report*
 6:00 3-1 *PBS NewsHour*
 7:00 **Frontline** "Secrets of the Vatican"
 3-1 *Song of the Mountains*
 8:00 3-1 *Red Green Show*
 8:30 **Song of the Mountains**
 3-1 *In Good Shape*
 9:00 3-1 *Creative Living*
 3-3 *Charlie Rose*
 9:30 **Red Green Show** "Something in the Heir"
 3-1 *You Should Know*
 10:00 **Live from the Artists Den** "Tim McGraw"
 3-1 *Charlie Rose*
 3-3 *Moyers & Company*
 3-3 *Scully/The World Show*
 10:30 3-1 *Charlie Rose*
 11:00 **Charlie Rose**
 3-1 *Tavis Smiley*
 3-3 *Frontline*
 12:00 **PBS NewsHour**
 3-1 *This Old House Hour*

Friday 11th

5:00 3-1 *Classical Stretch*
 5:30 3-1 *Wai Lana Yoga*
 6:00 3-1 *America's Heartland*
 6:30 3-1 *Rhythm Abroad*
 7:00 3-1 *Song of the Mountains*
 8:00 3-1 *This Old House Hour*
 9:00 3-1 *Globe Trekker*
 10:00 3-1 *Joy of Painting*
 10:30 3-1 *Painting Wild Places*
 11:00 3-1 *Beauty of Oil Painting*
 11:30 3-1 *Welcome to My Studio*
 12:00 3-1 *Jubilee*
 1:00 3-1 *Expeditions*
 1:30 3-1 *Start Up*
 2:00 3-1 *This Old House Hour*
 3:00 3-1 *Globe Trekker*
 4:00 3-1 *Just Seen It*
 4:30 3-1 *Moyers & Company*
 5:00 3-1 *European Journal*
 5:30 3-1 *Nightly Business Report*
 6:00 3-1 *PBS NewsHour*
 7:00 **Market to Market**
 3-1 *Washington Week*
 7:30 **Consuelo Mack WealthTrack**
 3-1 *Charlie Rose: The Week*
 8:00 **Washington Week**
 3-1 *Carol Burnett: The Mark Twain Prize*
 8:30 **Charlie Rose: The Week**
 9:00 **History Detectives Special**
 "The Disappearance of Glenn Miller"
 3-3 *Charlie Rose*
 10:00 **Masterpiece Mystery!**
 "Endeavour II: Nocturne"
 3-1 *Charlie Rose*
 3-3 *Frontline*
 11:00 3-1 *Tavis Smiley*
 11:30 **Vicious, Pt. 2**
 3-3 *Discover Vivaldi's Four Seasons*
 12:00 **PBS NewsHour**
 3-1 *Washington Week*

Saturday 12th

6:00 **Woodturning Workshop**
 "Cocobolo Gavel"
 6:30 **American Woodshop** "Kitchen Projects"
 7:00 **Rough Cut** "Rice Paper Divider"

7:30 **Sara's Weeknight Meals**
 "Picnics and Tailgates"
 8:00 **America's Test Kitchen**
 "Easy Summer Supper"
 8:30 **Martha Stewart's Cooking School**
 "Salads"
 9:00 **Barbecue University** "The New Face of Beef"
 9:30 **Motorweek**
 10:00 **P. Allen Smith's Garden to Table**
 "Soul Food"
 3-1 *This Old House Hour*
 10:30 **Victory Garden's Edible Feast**
 10:57 **Star Gazers**
 11:00 **Paint This with Jerry Yarnell**
 "Morning Fog, Pt. 1"
 3-1 *In Julia's Kitchen with Master Chefs*
 11:30 **Joy of Painting** "Mountain at Sunset"
 3-1 *Victory Garden's Edible Feast*
 12:00 **Beauty of Oil Painting** "Egret in the Mist"
 3-1 *This Old House*
 12:30 **Quilt in a Day** "Rocky Road to Kansas"
 3-1 *This Old House*
 1:00 **Quilting Arts** "Quilts Gone Wild"
 3-1 *Ask This Old House*
 1:30 **Fons & Porter's Love of Quilting**
 "Speaking of Thread"
 3-1 *Hometime*
 2:00 **Creative Living**
 3-1 *Woodwright's Shop*
 2:30 **Joanne Weir's Cooking Class** "Brick-Cooked Chicken & Grilled Potato Salad"
 3-1 *Motorweek*
 3:00 **Hometime** "Creekside Home Heat"
 3-1 *Martha Stewart's Cooking School*
 3:30 **This Old House** "Arlington Italianate Project 2014/Old House Discoveries"
 3-1 *Martha Bakes*
 4:00 **Ask This Old House** Installing an irrigation system in New Mexico and a new style of heat-pump water heater
 3-1 *History Detectives Special*
 4:30 **Welcome to My Studio**
 "A Portrait's Dimension"
 5:00 **Sewing with Nancy**
 "Sew Grand Dresden Quilts"
 3-1 *PBS NewsHour Weekend*
 5:30 **Fit 2 Stitch** "The Bodice and Darts"
 3-1 *Charlie Rose: The Week*
 6:00 **Report from Santa Fe**
 3-1 *Antiques Roadshow*
 6:30 **America's Heartland**
 7:00 **Lawrence Welk** "Hooray for Hollywood"
 3-1 *Carol Burnett: The Mark Twain Prize*
 8:00 **Vicar of Dibley** "Election"
 8:30 **Good Neighbors** "The Thing in the Cellar"
 9:00 **Austin City Limits** "Randy Newman"
 3-1 *POV "My Way to Olympia"*
 3-3 *Lawrence Welk Show*
 10:00 **Nova** "Mystery of a Masterpiece"
 3-1 *Austin City Limits*
 3-3 *Classic Gospel*
 11:00 **Nature** "Saving Otter 501"
 3-1 *Nature*
 3-3 *Front and Center*
 11:57 **Star Gazers**
 12:00 **Austin City Limits**
 3-1 *Nova*
 3-3 *Jubilee*

Sunday 13th

6:00 **Expeditions**
 "The Ace Basin, a Conservation Miracle"
 6:30 **Second Opinion** "Autism"
 7:00 **Antiques Roadshow** "Vintage Secaucus"
 8:00 **Classic Gospel** "Gaither Homecoming Celebration"
 9:00 **Joy of Music** "St. Bavo, Haarlem, Holland"
 9:30 **Joy of Music** "Musical Visit to Oslo, Norway"

10:00 Time Scanners "St. Paul's Cathedral"
11:00 Globe Trekker "Barcelona City Guide"
12:00 Life on the Line "Out of the Bubble"
12:30 In Focus
 3-1 *Washington Week*
 1:00 3-1 *Charlie Rose: The Week*
1:30 All Aboard "Norfolk Southern Atlanta..."
 3-1 *Market to Market*
2:00 Closer to Truth
 "Pantheism: Is the World God"
 3-1 *Religion & Ethics Newsweekly*
2:30 Well Read
 "Debbie Macomber, Starry Night"
 3-1 *Ask This Old House*
3:00 Healthy Body Healthy Mind
 "Science of Inflammatory Bowel Disease"
 3-1 *Secrets of the Dead*
3:30 Religion & Ethics Newsweekly
4:00 Classic Gospel "Tent Revival"
 3-1 *Nova* "Mystery of a Masterpiece"
5:00 PBS NewsHour Weekend
 3-1 *PBS NewsHour Weekend*
5:30 McLaughlin Group
 3-1 *Washington Week*
6:00 Moyers & Company
 3-1 *Vicar of Dibley*
6:30 Travel Detective "Dangers of Pet Travel"
 3-1 *Good Neighbors*
7:00 Last Tango in Halifax II, Pt. 3
 3-1 *Last Tango in Halifax II, Pt. 3*
8:00 Masterpiece Mystery!
 "Endeavour II: Sway"
 3-1 *Masterpiece Mystery!*
 9:00 3-3 *Well Read*
9:30 Vicious, Pt. 3
 3-1 *Vicious, Pt. 3*
 3-3 *In the Americas*
10:00 Secrets of the Dead
 "The Mona Lisa Mystery"
 3-1 *Austin City Limits*
 3-3 *Cool Spaces!*
11:00 Running of the Bulls
 3-1 *Last Tango in Halifax II, Pt. 3*
 3-3 *Masterpiece "Endeavour II: Sway"*
12:00 Nova "Mystery of a Masterpiece"
 3-1 *Masterpiece "Endeavour II: Sway"*

Monday 14th

5:00 3-1 *Classical Stretch*
 5:30 3-1 *Wai Lana Yoga*
 6:00 3-1 *Nature "Otter"*
 7:00 3-1 *Masterpiece "Endeavour II: Sway"*
 8:30 3-1 *Vicious, Pt. 2*
 9:00 3-1 *Taste of History*
 9:30 3-1 *Sara's Weeknight Meals*
 10:00 3-1 *In Good Shape*
 10:30 3-1 *P. Allen Smith's Garden to Table*
 11:00 3-1 *Cool Spaces!*
 12:00 3-1 *Xerox Rochester International Jazz Festival*
 1:00 3-1 *Masterpiece "Endeavour II: Sway"*
 2:30 3-1 *Vicious, Pt. 2*
 3:00 3-1 *This American Land*
 3:30 3-1 *Fishing Behind the Lines*
 4:00 3-1 *America's Heartland*
 4:30 3-1 *Cool Spaces!*
 5:30 3-1 *Nightly Business Report*
 6:00 3-1 *PBS NewsHour*
7:00 Antiques Roadshow "Vintage Baltimore"
 3-1 *Antiques Roadshow*
8:00 Antiques Roadshow
 "Vintage Los Angeles"
 3-1 *POV "Getting Back to Abnormal"*
9:00 Primary Concern
 3-3 *Charlie Rose*
 9:30 3-1 *Out of Order*

10:00 All Aboard
 3-1 *Charlie Rose*
 3-3 *Antiques Roadshow*
10:30 Getting Away Together
 "Crystal Coast of North Carolina"
11:00 Antiques Roadshow "Vintage Los Angeles"
 3-1 *Tavis Smiley*
 3-3 *POV "Getting Back to Abnormal"*
11:57 Star Gazers
12:00 PBS NewsHour
 3-1 *Antiques Roadshow*

Tuesday 15th

5:00 3-1 *Classical Stretch*
 5:30 3-1 *Wai Lana Yoga*
 6:00 3-1 *Antiques Roadshow*
 7:00 3-1 *POV "Getting Back to Abnormal"*
 8:30 3-1 *Out of Order*
 9:00 3-1 *Healthy Body Healthy Mind*
 9:30 3-1 *Second Opinion*
 10:00 3-1 *Closer to Truth*
 10:30 3-1 *Religion & Ethics Newsweekly*
 11:00 3-1 *Song of the Mountains*
 12:00 3-1 *Antiques Roadshow*
 1:00 3-1 *POV "Getting Back to Abnormal"*
 2:30 3-1 *Out of Order*
 3:00 3-1 *Arts in Context*
 3:30 3-1 *Life Focus*
 4:00 3-1 *Consuelo Mack WealthTrack*
 4:30 3-1 *Scully/The World Show*
 5:00 3-1 *Report from Santa Fe*
 5:30 3-1 *Nightly Business Report*
 6:00 3-1 *PBS NewsHour*
7:00 Time Scanners "Petra"
 3-1 *Time Scanners*
8:00 History Detectives Special
 "Texas Servant Girl Murders"
 3-1 *History Detectives Special*
9:00 You Should Know
 3-1 *Frontline*
 3-3 *Charlie Rose*
9:30 Creative Living
10:00 Frontline "Separate and Unequal"
 3-1 *Charlie Rose*
 3-3 *Time Scanners*
11:00 Charlie Rose
 3-1 *Tavis Smiley*
 3-3 *History Detectives Special*
12:00 PBS NewsHour
 3-1 *Time Scanners*
 3-3 *Mind Over Murder*

Wednesday 16th

5:00 3-1 *Classical Stretch*
 5:30 3-1 *Wai Lana Yoga*
 6:00 3-1 *Time Scanners "Petra"*
 7:00 3-1 *History Detectives Special*
 8:00 3-1 *Mind Over Murder*
 9:00 3-1 *Travel Detective*
 9:30 3-1 *Getting Away Together*
 10:00 3-1 *American Woodshop*
 10:30 3-1 *Woodturning Workshop*
 11:00 3-1 *Frontline*
 12:00 3-1 *Time Scanners "Petra"*
 1:00 3-1 *History Detectives Special*
 2:00 3-1 *Mind Over Murder*
 3:00 3-1 *Firehouse Kitchen*
 3:30 3-1 *America's Test Kitchen*
 4:00 3-1 *Ecosense for Living*
 4:30 3-1 *Frontline*
 5:30 3-1 *Nightly Business Report*
 6:00 3-1 *PBS NewsHour*
7:00 My Wild Affair
 "The Elephant Who Found a Mom"
 3-1 *My Wild Affair*

8:00 Nova "Australia's First 4 Billion Years: Awakening"
 3-1 *Nova*
9:00 Sex in the Wild "Elephants"
 3-1 *Sex in the Wild*
 3-3 *Charlie Rose*
10:00 Healthy Body Healthy Mind "Knee Replacements: New Procedures Work!"
 3-1 *Charlie Rose*
 3-3 *My Wild Affair*
10:30 This Old House
11:00 Charlie Rose
 3-1 *Tavis Smiley*
 3-3 *Nova*
11:57 Star Gazers
12:00 PBS NewsHour
 3-1 *My Wild Affair*
 3-3 *America's Generations "Boomers"*

Thursday 17th

5:00 3-1 *Classical Stretch*
 5:30 3-1 *Wai Lana Yoga*
 6:00 3-1 *Moyers & Company*
 6:30 3-1 *Charlie Rose: The Week*
 7:00 3-1 *My Wild Affair*
 8:00 3-1 *Nova*
 9:00 3-1 *Fons & Porter's Quilting*
 9:30 3-1 *Quilt in a Day*
 10:00 3-1 *Knit and Crochet Now!*
 10:30 3-1 *Fit 2 Stitch*
 11:00 3-1 *America's Generations "Boomers"*
 12:00 3-1 *My Wild Affair*
 1:00 3-1 *Nova*
 2:00 3-1 *Richard Bangs' Adventures*
 3:00 3-1 *In the Americas*
 3:30 3-1 *Front and Center*
 4:30 3-1 *America's Generations "Boomers"*
 5:30 3-1 *Nightly Business Report*
 6:00 3-1 *PBS NewsHour*
7:00 Frontline "Separate and Unequal"
 3-1 *Song of the Mountains*
8:00 Song of the Mountains
 3-1 *Red Green Show*
 8:30 3-1 *In Good Shape*
9:00 The Farm "Brick Chicken"
 3-1 *Creative Living*
 3-3 *Charlie Rose*
9:30 Red Green Show "Daredevil"
 3-1 *You Should Know*
10:00 Woodsongs "Janiva Magness and Minton Sparks"
 3-1 *Charlie Rose*
 3-3 *Moyers & Company*
 10:30 3-3 *Scully/The World Show*
11:00 Charlie Rose
 3-1 *Tavis Smiley*
 3-3 *Frontline*
12:00 PBS NewsHour
 3-1 *This Old House Hour*
 3-3 *Richard Bangs' Adventures*

Friday 18th

5:00 3-1 *Classical Stretch*
 5:30 3-1 *Wai Lana Yoga*
 6:00 3-1 *America's Heartland*
 6:30 3-1 *Rhythm Abroad*
 7:00 3-1 *Song of the Mountains*
 8:00 3-1 *This Old House Hour*
 9:00 3-1 *Globe Trekker*
 10:00 3-1 *Joy of Painting*
 10:30 3-1 *Painting Wild Places*
 11:00 3-1 *Beauty of Oil Painting*
 11:30 3-1 *Welcome to My Studio*
 12:00 3-1 *Woodsongs*
 1:00 3-1 *Expeditions*
 1:30 3-1 *Start Up*

2:00 3-1 *This Old House Hour*
 3:00 3-1 *Globe Trekker*
 4:00 3-1 *Just Seen It*
 4:30 3-1 *Moyers & Company*
 5:00 3-1 *European Journal*
 5:30 3-1 *Nightly Business Report*
 6:00 3-1 *PBS NewsHour*
7:00 Market to Market
 3-1 *Washington Week*
7:30 Consuelo Mack WealthTrack
 3-1 *Charlie Rose: The Week*
8:00 Washington Week
 3-1 *Ellen Degeneres: The Mark Twain Prize*
8:30 Charlie Rose: The Week
9:00 History Detectives Special
 "Texas Servant Girl Murders"
 3-3 *Charlie Rose*
 9:30 3-1 *PBS Previews: The Roosevelts*
10:00 Masterpiece "Endeavour II: Sway"
 3-1 *Charlie Rose*
 3-3 *Frontline*
 11:00 3-1 *Tavis Smiley*
 3-3 *Ottomans vs. Christians*
11:30 Vicious, Pt. 3
12:00 PBS NewsHour
 3-1 *Washington Week*
 3-3 *My Wild Affair*

Saturday 19th

6:00 Woodturning Workshop "Baseball Bat"
6:30 American Woodshop "Deck Projects"
7:00 Rough Cut "Bookstand"
7:30 Sara's Weeknight Meals "Vegan"
8:00 America's Test Kitchen
 "Quick and Easy Rib Dinner"
8:30 Martha Stewart's Cooking School "Corn"
9:00 Barbecue University "Meatless Grilling"
9:30 Motorweek
10:00 P. Allen Smith's Garden to Table
 "America's First Food"
 3-1 *This Old House Hour*
10:30 Victory Garden's Edible Feast
10:57 Star Gazers
11:00 Paint This with Jerry Yarnell
 "Morning Fog, Pt. 2"
 3-1 *In Julia's Kitchen with Master Chefs*
11:30 Joy of Painting "Mountain Challenge"
 3-1 *Victory Garden's Edible Feast*
12:00 Beauty of Oil Painting "Pink Delight"
 3-1 *This Old House*
12:30 Quilt in a Day "Peony"
 3-1 *This Old House*
1:00 Quilting Arts "Landscape Quilting"
 3-1 *Ask This Old House*
1:30 Fons & Porter's Love of Quilting
 "Easy Baby Quilts"
 3-1 *Hometime*
2:00 Creative Living
 3-1 *Woodwright's Shop*
2:30 Joanne Weir's Cooking Class "Beef Roulade & Grilled Bread with Tomatoes"
 3-1 *Motorweek*
3:00 Hometime "Creekside Home Garage Door"
 3-1 *Martha Stewart's Cooking School*
3:30 This Old House "Arlington Italianate Project 2014/Quest for a Dry Basement"
 3-1 *Martha Bakes*
4:00 Ask This Old House Installing a whole-house humidifier and a smoke detector
 3-1 *History Detectives Special*
4:30 Welcome to My Studio "The Old House"
5:00 Sewing with Nancy
 "Sew Speedy Lone Star Quilt"
 3-1 *PBS NewsHour Weekend*

5:30 Fit 2 Stitch "The Skirt, for All Ages"
 3-1 *Charlie Rose: The Week*
6:00 Report from Santa Fe
 3-1 *Antiques Roadshow*
6:30 America's Heartland
7:00 Lawrence Welk Show "The Italian Show"
 3-1 *Ellen Degeneres: The Mark Twain Prize*
8:00 Vicar of Dibley "Animals"
8:30 Good Neighbors "The Pagan Rite"
 3-1 *POV "Getting Back to Abnormal"*
9:00 Austin City Limits "Sarah Jarosz/The Milk Carton Kids"
 3-3 *Lawrence Welk Show*
10:00 Nova "Australia's First 4 Billion Years: Awakening"
 3-1 *Austin City Limits*
 3-3 *Classic Gospel*
11:00 My Wild Affair "The Elephant Who Found a Mom"
 3-1 *My Wild Affair*
 3-3 *Front and Center*
11:57 Star Gazers
12:00 Austin City Limits
 3-1 *Nova*
 3-3 *Jubilee*

Sunday 20th

6:00 Expeditions "The Florida Scrub – Islands in Time"
6:30 Second Opinion "Colon Cancer"
7:00 Antiques Roadshow "Vintage Los Angeles"
8:00 Classic Gospel "Bev Shea: Then Sings My Soul"
9:00 Joy of Music "Wales"
9:30 Joy of Music "Sacred Favorites IV"
10:00 Time Scanners "Petra"
11:00 Globe Trekker "Pacific Islands"
12:00 Life on the Line "End It Now"
12:30 In Focus
 3-1 *Washington Week*
 1:00 3-1 *Charlie Rose: The Week*
1:30 All Aboard "Michigan Fast Freight"
 3-1 *Market to Market*
2:00 Closer to Truth "How Do Brains Work?"
 3-1 *Religion & Ethics Newsweekly*
2:30 Well Read "Jonathan Lethem, Dissident Gardens"
 3-1 *Ask This Old House*
3:00 Healthy Body Healthy Mind
 "Surviving Cancer and Cancer Toxicity"
 3-1 *My Wild Affair*
3:30 Religion & Ethics Newsweekly
4:00 Classic Gospel "Tent Revival – Old Rugged Cross"
 3-1 *Nova*
5:00 PBS NewsHour Weekend
 3-1 *PBS NewsHour Weekend*
5:30 McLaughlin Group
 3-1 *Washington Week*
6:00 Moyers & Company
 3-1 *Vicar of Dibley*
6:30 Travel Detective
 "Traveling to Off-Limits Nations"
 3-1 *Good Neighbors*
7:00 Last Tango in Halifax II, Pt. 4
 3-1 *Last Tango in Halifax II, Pt. 4*
8:00 Masterpiece Mystery!
 "Endeavour II: Neverland"
 3-1 *Masterpiece Mystery!*
 9:00 3-3 *Well Read*
9:30 Vicious, Pt. 4
 3-1 *Vicious, Pt. 4*
 3-3 *In the Americas*

10:00 Shirley Temple: America's Little Darling
 3-1 *Austin City Limits*
 3-3 *Cool Spaces!*
11:00 POV "My Way to Olympia"
 3-1 *Last Tango in Halifax II, Pt. 4*
 3-3 *Masterpiece "Endeavour II: Neverland"*
12:00 Nova "Australia's First 4 Billion Years: Awakening"
 3-1 *Masterpiece "Endeavour II: Neverland"*

Monday 21st

5:00 3-1 *Classical Stretch*
 5:30 3-1 *Wai Lana Yoga*
 6:00 3-1 *Earth: The Inside Story*
 7:00 3-1 *Masterpiece "Endeavour II: Neverland"*
 8:30 3-1 *Vicious, Pt. 3*
 9:00 3-1 *Taste of History*
 9:30 3-1 *Sara's Weeknight Meals*
 10:00 3-1 *In Good Shape*
 10:30 3-1 *P. Allen Smith's Garden to Table*
 11:00 3-1 *Cool Spaces!*
 12:00 3-1 *Live from the Artists Den*
 1:00 3-1 *Masterpiece "Endeavour II: Neverland"*
 2:30 3-1 *Vicious, Pt. 3*
 3:00 3-1 *This American Land*
 3:30 3-1 *Fishing Behind the Lines*
 4:00 3-1 *America's Heartland*
 4:30 3-1 *Cool Spaces!*
 5:30 3-1 *Nightly Business Report*
 6:00 3-1 *PBS NewsHour*
7:00 Antiques Roadshow "Vintage Salt Lake City"
 3-1 *Antiques Roadshow*
8:00 Antiques Roadshow "Vintage Milwaukee"
 3-1 *POV "Dance for Me"*
9:00 Little League: A History
 3-3 *Charlie Rose*
 9:30 3-1 *Brooks – The City of 100 Hellos*
10:00 All Aboard "Chama Turn"
 3-1 *Charlie Rose*
 3-3 *Antiques Roadshow*
10:30 Getting Away Together
 "Blue Ridge, Georgia"
11:00 Antiques Roadshow "Vintage SLC"
 3-1 *Tavis Smiley*
 3-3 *POV "Dance for Me"*
11:57 Star Gazers
12:00 PBS NewsHour
 3-1 *Antiques Roadshow*

Tuesday 22nd

5:00 3-1 *Classical Stretch*
 5:30 3-1 *Wai Lana Yoga*
 6:00 3-1 *Antiques Roadshow*
 7:00 3-1 *POV "Dance for Me"*
 8:30 3-1 *Brooks: City of 100 Hellos*
 9:00 3-1 *Healthy Body Healthy Mind*
 9:30 3-1 *Second Opinion*
 10:00 3-1 *Closer to Truth*
 10:30 3-1 *Religion & Ethics Newsweekly*
 11:00 3-1 *Song of the Mountains*
 12:00 3-1 *Antiques Roadshow*
 1:00 3-1 *POV "Dance for Me"*
 2:30 3-1 *Brooks: City of 100 Hellos*
 3:00 3-1 *Arts in Context*
 3:30 3-1 *Life Focus*
 4:00 3-1 *Consuelo Mack WealthTrack*
 4:30 3-1 *Scully/The World View*
 5:00 3-1 *Report from Santa Fe*
 5:30 3-1 *Nightly Business Report*
 6:00 3-1 *PBS NewsHour*

7:00 Al Capone: Icon
3-1 *Al Capone: Icon*

8:00 History Detectives Special
"Who Killed Jimmy Hoffa?"
3-1 *History Detectives Special*

9:00 You Should Know
3-1 *Frontline*
3-3 *Charlie Rose*

9:30 Creative Living

10:00 Frontline "Poor Kids"
3-1 *Charlie Rose*
3-3 *Al Capone: Icon*

11:00 Charlie Rose
3-1 *Tavis Smiley*
3-3 *History Detectives Special*

12:00 PBS NewsHour
3-1 *Al Capone: Icon*
3-3 *G-Man: The Rise and Fall of Melvin Purvis*

Wednesday 23rd

5:00 3-1 *Classical Stretch*
5:30 3-1 *Wai Lana Yoga*
6:00 3-1 *Al Capone: Icon*
7:00 3-1 *History Detectives Special*
8:00 3-1 *G-Man: The Rise and Fall of Melvin Purvis*
9:00 3-1 *Travel Detective*
9:30 3-1 *Getting Away Together*
10:00 3-1 *American Woodshop*
10:30 3-1 *Woodturning Workshop*
11:00 3-1 *Frontline*
12:00 3-1 *Al Capone: Icon*
1:00 3-1 *History Detectives Special*
2:00 3-1 *G-Man: Melvin Purvis*
3:00 3-1 *Firehouse Kitchen*
3:30 3-1 *America's Test Kitchen*
4:00 3-1 *Ecosense for Living*
4:30 3-1 *Frontline*
5:30 3-1 *Nightly Business Report*
6:00 3-1 *PBS NewsHour*
7:00 **My Wild Affair** "The Ape Who Went to College"
3-1 *My Wild Affair*
8:00 **Nova** "Australia's First 4 Billion Years: Life Explodes"
3-1 *Nova*
9:00 **Sex in the Wild** "Orangutans"
3-1 *Sex in the Wild*
3-3 *Charlie Rose*
10:00 **Healthy Body Healthy Mind**
"Fertility & Pregnancy in Women with Crohn's Disease"
3-1 *Charlie Rose*
3-3 *My Wild Affair*
10:30 **This Old House**
11:00 **Charlie Rose**
3-1 *Tavis Smiley*
3-3 *Nova*
11:57 **Star Gazers**
12:00 **PBS NewsHour**
3-1 *My Wild Affair*
3-3 *America's Generation "Gen X"*

Thursday 24th

5:00 3-1 *Classical Stretch*
5:30 3-1 *Wai Lana Yoga*
6:00 3-1 *Moyers & Company*
6:30 3-1 *Charlie Rose: The Week*
7:00 3-1 *My Wild Affair*
8:00 3-1 *Nova*
9:00 3-1 *Fons & Porter's Quilting*
9:30 3-1 *Quilt in a Day*
10:00 3-1 *Knit and Crochet Now!*
10:30 3-1 *Fit 2 Stitch*
11:00 3-1 *America's Generations "Generation X"*

12:00 3-1 *My Wild Affair*
1:00 3-1 *Nova*
2:00 3-1 *Richard Bangs' Adventures*
3:00 3-1 *Life on the Line*
3:30 3-1 *Front and Center*
4:30 3-1 *America's Generations "Gen X"*
5:30 3-1 *Nightly Business Report*
6:00 3-1 *PBS NewsHour*
7:00 **Frontline** "Poor Kids"
3-1 *Song of the Mountains*
8:00 **Song of the Mountains**
3-1 *Red Green Show*
8:30 3-1 *In Good Shape*
9:00 **The Farm** "Herb Show"
3-1 *Creative Living*
3-3 *Charlie Rose*
9:30 **Red Green Show** "Mike Goes Straight"
3-1 *You Should Know*
10:00 **Woodsongs** "Old Man Luedecke and Sarah Jarosz"
3-1 *Charlie Rose*
3-3 *Moyers & Company*
10:30 3-3 *Scully/The World Show*
11:00 **Charlie Rose**
3-1 *Tavis Smiley*
3-3 *Frontline*
12:00 **PBS NewsHour**
3-1 *This Old House Hour*
3-3 *Richard Bangs' Adventures*

Friday 25th

5:00 3-1 *Classical Stretch*
5:30 3-1 *Wai Lana Yoga*
6:00 3-1 *America's Heartland*
6:30 3-1 *Rhythm Abroad*
7:00 3-1 *Song of the Mountains*
8:00 3-1 *This Old House Hour*
9:00 3-1 *Globe Trekker*
10:00 3-1 *Joy of Painting*
10:30 3-1 *Painting Wild Places*
11:00 3-1 *Beauty of Oil Painting*
11:30 3-1 *Welcome to My Studio*
12:00 3-1 *Woodsongs*
1:00 3-1 *Expeditions*
1:30 3-1 *Start Up*
2:00 3-1 *This Old House Hour*
3:00 3-1 *Globe Trekker*
4:00 3-1 *Just Seen It*
4:30 3-1 *Moyers & Company*
5:00 3-1 *European Journal*
5:30 3-1 *Nightly Business Report*
6:00 3-1 *PBS NewsHour*
7:00 **Market to Market**
3-1 *Washington Week*
7:30 **Consuelo Mack WealthTrack**
3-1 *Charlie Rose: The Week*
8:00 **Washington Week**
3-1 *Tina Fey: The Mark Twain Prize*
8:30 **Charlie Rose: The Week**
9:00 **History Detectives Special**
"Who Killed Jimmy Hoffa?"
3-3 *Charlie Rose*
9:30 3-1 *Emery Blagdon and His Healing Machine*
10:00 **Masterpiece Mystery!**
"Endeavour II: Neverland"
3-1 *Charlie Rose*
3-3 *Frontline*
11:00 3-1 *Tavis Smiley*
3-3 *Ottomans vs. Christians*
11:30 **Vicious, Pt. 4**
12:00 **PBS NewsHour**
3-1 *Washington Week*
3-3 *My Wild Affair*

Saturday 26th

6:00 **Woodturning Workshop** "Cookie Cutter"
6:30 **American Woodshop**
"Outdoor Keyed Deck Chairs"
7:00 **Rough Cut** "Bird House"
7:30 **Sara's Weeknight Meals**
"Just 5 Ingredients"
8:00 **America's Test Kitchen**
"Summertime Desserts"
8:30 **Christina Cooks** "Burgers & Fries Makeover"
9:00 **Barbecue University** "High on the Hog"
9:30 **Motorweek**
10:00 **P. Allen Smith's Garden to Table**
"Going Underground"
3-1 *This Old House Hour*
10:30 **Victory Garden's Edible Feast**
10:57 **Star Gazers**
11:00 **Paint This with Jerry Yarnell**
"Morning Fog, Pt. 3"
3-1 *In Julia's Kitchen with Master Chefs*
11:30 **Joy of Painting** "High Chateau"
3-1 *Victory Garden's Edible Feast*
12:00 **Beauty of Oil Painting**
"Background Techniques"
3-1 *This Old House*
12:30 **Quilt in a Day** "Friendship and Christian Cross"
3-1 *This Old House*
1:00 **Quilting Arts** "Outlandish Quilts"
3-1 *Ask This Old House*
1:30 **Fons & Porter's Love of Quilting**
"Wagon Wheels"
3-1 *Hometime*
2:00 **Creative Living**
3-1 *Woodwright's Shop*
2:30 **Joanne Weir's Cooking Class** "Wild Mushroom Lasagna & Grilled Pepper Salad"
3-1 *Motorweek*
3:00 **Hometime** "Creekside Home Light & Glass"
3-1 *Martha Stewart's Cooking School*
3:30 **This Old House** "Arlington Italianate Project 2014/Additional Details"
3-1 *Martha Bakes*
4:00 **Ask This Old House**
Repairing a rotted porch post; dealing with high indoor humidity
3-1 *History Detectives Special*
4:30 **Welcome to My Studio** "The Basics of Flowers"
5:00 **Sewing with Nancy**
"Sewing Modkid Style, Pt. 1"
3-1 *PBS NewsHour Weekend*
5:30 **Fit 2 Stitch** "The Sleeve, Up, Down & All Around"
3-1 *Charlie Rose: The Week*
6:00 **Report from Santa Fe**
3-1 *Antiques Roadshow*
6:30 **America's Heartland**
7:00 **Lawrence Welk Show**
"Down on the Farm"
3-1 *Tina Fey: The Mark Twain Prize*
8:00 **Vicar of Dibley** "Dibley Live"
8:30 **Good Neighbors** "Backs to the Wall"
3-1 *POV "Dance for Me"*
9:00 **Austin City Limits** "Phoenix"
3-3 *Lawrence Welk Show*
10:00 **Nova** "Australia's First 4 Billion Years: Life Explodes"
3-1 *Austin City Limits*
3-3 *Classic Gospel*
11:00 **My Wild Affair** "The Ape Who Went to College"
3-1 *My Wild Affair*
3-3 *Front and Center*

12:00 Austin City Limits
3-1 *Nova*
3-3 *Jubilee*

Sunday 27th

6:00 Expeditions "Can We Save the Florida Scrub?"
6:30 Second Opinion "Mystery Diagnosis"
7:00 Antiques Roadshow
"Vintage Milwaukee"
8:00 Classic Gospel
"Tent Revival Homecoming"
9:00 Joy of Music "From the Presbyterian Church, Coshocton, OH"
9:30 Joy of Music "Paris I"
10:00 Secrets of the Dead "The Mona Lisa Mystery"
11:00 Globe Trekker Special "World War I"
12:00 Life on the Line "Baby Blue"
12:30 In Focus
3-1 *Washington Week*
1:00 3-1 *Charlie Rose: The Week*
1:30 All Aboard "Rails Chicago"
3-1 *Market to Market*
2:00 Closer to Truth "What Would an Infinite Cosmos Mean?"
3-1 *Religion & Ethics Newsweekly*
2:30 Well Read "Elizabeth Gilbert, The Sig. of All Things"
3-1 *Ask This Old House*
3:00 Healthy Body Healthy Mind "Knee Replacements: New Procedures Work!"
3-1 *My Wild Affair*
3:30 Religion & Ethics Newsweekly
4:00 Classic Gospel "Best of David Phelps"
3-1 *Nova*
5:00 PBS NewsHour Weekend
3-1 *PBS NewsHour Weekend*
5:30 McLaughlin Group
3-1 *Washington Week*
6:00 Moyers & Company
3-1 *Vicar of Dibley*
6:30 Travel Detective
"How Safe is Your Cruise?"
3-1 *Good Neighbors*
7:00 Last Tango in Halifax II, Pt. 5
3-1 *Last Tango in Halifax II, Pt. 5*
8:00 Masterpiece Mystery!
"Poirot, Season 12: The Big Four"
3-1 *Masterpiece "Poirot 12: The Big Four"*
9:00 3-3 *Well Read*
9:30 Vicious, Pt. 5
3-1 *Vicious, Pt. 5*
3-3 *In the Americas*
10:00 POV "Dance for Me"
3-1 *Austin City Limits*
3-3 *Cool Spaces!*
11:00 3-1 *Last Tango in Halifax II, Pt. 5*
3-3 *Masterpiece "Poirot: The Big Four"*
11:30 Sum Total of our Memory: Facing Alzheimer's Together
12:00 Nova "Australia's First 4 Billion Years: Life Explodes"
3-1 *Masterpiece Mystery!*

Monday 28th

5:00 3-1 *Classical Stretch*
5:30 3-1 *Wai Lana Yoga*
6:00 3-1 *Grab*
7:00 3-1 *Masterpiece "Poirot: The Big Four"*
8:30 3-1 *Vicious, Pt. 4*
9:00 3-1 *Taste of History*
9:30 3-1 *Sara's Weeknight Meals*
10:00 3-1 *In Good Shape*
10:30 3-1 *P. Allen Smith's Garden to Table*

11:00 3-1 *Cool Spaces!*
12:00 3-1 *Live from the Artists Den*
1:00 3-1 *Masterpiece "Poirot: The Big Four"*
2:30 3-1 *Vicious, Pt. 4*
3:00 3-1 *This American Land*
3:30 3-1 *Fishing Behind the Lines*
4:00 3-1 *America's Heartland*
4:30 3-1 *Cool Spaces!*
5:30 3-1 *Nightly Business Report*
6:00 3-1 *PBS NewsHour*
7:00 Antiques Roadshow
"Vintage Des Moines"
3-1 *Antiques Roadshow*
8:00 Antiques Roadshow
"Vintage Louisville"
3-1 *POV "Fallen City"*
9:00 Running of the Bulls
3-1 *Shift Change*
3-3 *Charlie Rose*
10:00 All Aboard "Steam in the '50s"
3-1 *Charlie Rose*
3-3 *Antiques Roadshow*
10:30 Getting Away Together
"Emerald Coast of Northwest Florida"
11:00 Antiques Roadshow
"Vintage Des Moines"
3-1 *Tavis Smiley*
3-3 *POV "Fallen City"*
11:57 Star Gazers
12:00 PBS NewsHour
3-1 *Antiques Roadshow*
3-3 *Shift Change*

Tuesday 29th

5:00 3-1 *Classical Stretch*
5:30 3-1 *Wai Lana Yoga*
6:00 3-1 *Antiques Roadshow*
7:00 3-1 *POV "Fallen City"*
8:00 3-1 *Shift Change*
9:00 3-1 *Healthy Body Healthy Mind*
9:30 3-1 *Second Opinion*
10:00 3-1 *Closer to Truth*
10:30 3-1 *Religion & Ethics Newsweekly*
11:00 3-1 *Song of the Mountains*
12:00 3-1 *Antiques Roadshow*
1:00 3-1 *POV "Fallen City"*
2:00 3-1 *Shift Change*
3:00 3-1 *Arts in Context*
3:30 3-1 *Life Focus*
4:00 3-1 *Consuelo Mack WealthTrack*
4:30 3-1 *Scully/The World View*
5:00 3-1 *Report from Santa Fe*
5:30 3-1 *Nightly Business Report*
6:00 3-1 *PBS NewsHour*
7:00 Mark Twain, Pt. 1
3-1 *Mark Twain, Pt. 1*
9:00 You Should Know
3-1 *Frontline*
3-3 *Charlie Rose*
9:30 Creative Living
10:00 Frontline "Generation Like"
3-1 *Charlie Rose*
3-3 *Mark Twain, Pt. 1*
11:00 Charlie Rose
3-1 *Tavis Smiley*
12:00 PBS NewsHour
3-1 *Mark Twain, Pt. 1*
3-3 *Many Lovers of Jane Austen*

Wednesday 30th

5:00 3-1 *Classical Stretch*
5:30 3-1 *Wai Lana Yoga*
6:00 3-1 *Mark Twain, Pt. 1*
8:00 3-1 *Many Lives of Jane Austen*
9:00 3-1 *Travel Detective*
9:30 3-1 *Getting Away Together*

10:00 3-1 *American Woodshop*
10:30 3-1 *Woodturning Workshop*
11:00 3-1 *Frontline*
12:00 3-1 *Mark Twain, Pt. 1*
2:00 3-1 *Many Lovers of Jane Austen*
3:00 3-1 *Firehouse Kitchen*
3:30 3-1 *America's Test Kitchen*
4:00 3-1 *Ecosense for Living*
4:30 3-1 *Frontline*
5:30 3-1 *Nightly Business Report*
6:00 3-1 *PBS NewsHour*
7:00 My Wild Affair "The Rhino Who Joined the Family"
3-1 *My Wild Affair*
8:00 Nova "Australia's First 4 Billion Years: Monsters"
3-1 *Nova*
9:00 Sex in the Wild "Kangaroos"
3-1 *Sex in the Wild*
3-3 *Charlie Rose*
10:00 Healthy Body Healthy Mind
"Fertility & Pregnancy in Women with Crohn's Disease"
3-1 *Charlie Rose*
3-3 *My Wild Affair*
10:30 This Old House
11:00 Charlie Rose
3-1 *Tavis Smiley*
3-3 *Nova*
11:57 Star Gazers
12:00 PBS NewsHour
3-1 *My Wild Affair*
3-3 *America's Generations "Millennials"*

Thursday 31st

5:00 3-1 *Classical Stretch*
5:30 3-1 *Wai Lana Yoga*
6:00 3-1 *Moyers & Company*
6:30 3-1 *Charlie Rose: The Week*
7:00 3-1 *My Wild Affair*
8:00 3-1 *Nova*
9:00 3-1 *Fons & Porter's Quilting*
9:30 3-1 *Quilt in a Day*
10:00 3-1 *Knit and Crochet Now!*
10:30 3-1 *Fit 2 Stitch*
11:00 3-1 *America's Generations "Millennials"*
12:00 3-1 *My Wild Affair*
1:00 3-1 *Nova*
2:00 3-1 *Richard Bangs' Adventures*
3:00 3-1 *Life on the Line*
3:30 3-1 *Front and Center*
4:30 3-1 *America's Generations "Millennials"*
5:30 3-1 *Nightly Business Report*
6:00 3-1 *PBS NewsHour*
7:00 Frontline "Generation Like"
3-1 *Song of the Mountains*
8:00 Song of the Mountains
3-1 *Red Green Show*
8:30 3-1 *In Good Shape*
9:00 The Farm "Steak Show"
3-1 *Creative Living*
3-3 *Charlie Rose*
9:30 Red Green Show "Xmas in July"
3-1 *You Should Know*
10:00 Woodsongs "Guy Davis, Si Kahn & the Looping Brothers"
3-1 *Charlie Rose*
3-3 *Moyers & Company*
10:30 3-3 *Scully/The World Show*
11:00 Charlie Rose
3-1 *Tavis Smiley*
3-3 *Frontline*
12:00 PBS NewsHour
3-1 *This Old House Hour*
3-3 *Richard Bangs' Adventures*

◆ KENW/KMTH-FM LOG ◆

**Portales, NM, 89.5 MHz — Maljamar, NM, 98.7 MHz — Tucumcari, NM, 88.9 MHz —
Des Moines, NM, 88.5 MHz — Ruidoso, NM, 88.5 MHz — Raton, NM, 88.1 MHz**

Translators: Apache Springs, 90.9 MHz; Clayton, 93.5 MHz; Conchas Dam, 88.3; Des Moines, 106.1 MHz;
Ft. Sumner, 91.7 MHz; Las Vegas, 107.1 MHz; Midland, TX - 99.5 MHz; Montoya, 90.7 MHz;
Roswell, 91.1 MHz; Ruidoso, 89.3 MHz; Wagon Mound, 92.1 MHz;

Sundays

8:00 a.m. WITH HEART AND VOICE
 Jul 6 Fireworks for the First and Fourth
 Jul 13 A French Feast
 Jul 20 "Now let us praise famous...women!"
 Jul 27 Sounds of Summer

9:00 a.m. FOOTLIGHT PARADE
 Jul 6 Put it There, Pal
 Jul 13 1957 on Stage and Screen
 Jul 20 All I Want...
 Jul 27 1999 on Stage

10:00 a.m. RADIO LAB
 Jul 6 What's Left When You're Right
 Jul 13 Morality
 Jul 20 Words
 Jul 27 Who Am I?

11:00 a.m. FRESH AIR WEEKEND

12:00 p.m. PEOPLE'S PHARMACY

1:00 p.m. THIS AMERICAN LIFE is a new addition to the KENW-FM schedule. The series features real-life stories of everyday life that are both funny and sad, personal and epic.

2:00 p.m. DEMOCRACY NOW!

3:00 p.m. MOUNTAIN STAGE
 Jul 6 Over the Rhine; The Black Lillies; Vienna Teng; Brendan James; Mark Bates
 Jul 13 Thao and The Get Down Stay Down; The Bottle Rockets; Ben Sollee; The Slide Brothers; The Howlin' Brothers
 BoDeans; Dead Man Winter; Jill & Julia; The Pines; Jonathan Rundman
 Acoustic Trio
 Jul 27 Tom Paxton; Lori McKenna; Matraca Berg; Andrew Walesch; Drew Kennedy; Jon Vezner

5:00 p.m. CELTIC CONNECTIONS
 Jul 6 Music of the Civil War Era
 Jul 13 New Releases
 Jul 20 Music and Poetry
 Jul 27 Celtic Kids

6:00 p.m. ALL THINGS CONSIDERED

7:00 p.m. SAN FRANCISCO SYMPHONY
 Jul 6 BEETHOVEN: Piano Concerto No. 4 in G, Op. 58
 BRAHMS: Symphony No. 1 in c, Op. 68
 BERLIOZ: Introduction from *Romeo et Juliette*, Op. 17
 Jul 13 WAGNER: Prelude and Liebestod from *Tristan und Isolde*
 BEETHOVEN: Symphony No. 3 in E-Flat, Op. 55, "Eroica"
 SIBELIUS: Symphony No. 7 in C, Op. 105
 Jul 20 BEETHOVEN: Violin Concerto in D, Op. 61
 NIELSEN: Symphony No. 5, Op. 50
 BRAHMS: Serenade No. 2 in A, Op. 16
 Jul 27 WAGNER: Excerpts from *Der fliegende Hollander* and *Die Walkure*
 DVORAK: Symphony No. 9 in e, Op. 95, "From the New World"
 DEBUSSY: Nocturnes

9:00 p.m. THE ROMANTIC HOUR
 Jul 6 Amusing quotations about love
 Jul 13 Poetry of Rumi
 Jul 20 Selections from The 50 Greatest Love Letters of All Time
 Jul 27 The poem "Zone" by Guillaume Apollinaire

10:00 p.m. WEEKEND PERFORMANCE TODAY

11:00 p.m. MUSIC OUT OF THE NIGHT AND INTO THE MORNING until 5:00 a.m. when **Morning Edition** begins.

Mondays

7:00 p.m. CHICAGO SYMPHONY ORCHESTRA
 Jul 7 BARBER: Overture to the *School for Scandal*
 SCHUMAN: Symphony No. 6
 BATES: Violin Concerto
 GERSHWIN: An American in Paris
 IVES: The Unanswered Question; Three Places in New England
 Jul 14 MESSIAEN: *Trois Petit Liturgies*
 FALLA: *Nights in the Gardens of Spain*
 RAVEL: *Rapsodie Espagnol*
 GOLIJOV: *Mariel*
 SORO: *Tres Aires Chilenos*
 Jul 21 SCHUMANN: Piano Concerto in a, Op. 54
 SCHUBERT: Symphony No. 9 in C, D. 944; Symphony No. 3 in D, D. 200
 Jul 28 SIBELIUS: Suite No. 1 from *The Tempest*
 STRAVINSKY: Violin Concerto in D
 DEBUSSY: *La mer*
 DVORAK: *The Water Goblin*
 WILLIAMS: Excerpt from film score for *Lincoln*

9:00 p.m. PERFORMANCE TODAY

11:00 p.m. MUSIC OUT OF THE NIGHT AND INTO THE MORNING until 5:00 a.m. when **Morning Edition** begins.

Tuesdays

7:00 p.m. NEW YORK PHILHARMONIC
 Jul 1 BRAHMS: Piano Concerto No. 1
 SCHUMANN: Symphony No. 2
 Jul 8 COPLAND: Four Dance Episodes from *Rodeo*
 SOUSA: The Glory of the Yankee Navy; Hands Across the Sea; The Liberty Bell
 BERNSTEIN/GRUNDMAN: *Candide* Suite; The Best of All Possible Worlds; What a Day; Glitter and Be Gay; Make Our Garden Grow
 Various/SANDIDGE: Armed Forces Medley
 Jul 15 The Beethoven Piano Concertos: A Philharmonic Festival, Program A
 BEETHOVEN: Piano Concerto No. 1 in C, Op. 15; Piano Concerto No. 4 in G, Op. 58
 CHEUNG: *Lyra* (World Premiere/ NYP Commission)

Jul 22 The Beethoven Piano Concertos: A Philharmonic Festival, Program B
 BEETHOVEN: Piano Concerto No. 2 in B-Flat, Op. 19; Piano Concerto No. 3 in c, Op. 37
 SHEPHERD: *Songs* (World Premiere/NYP Commission)

Jul 29 The Beethoven Piano Concertos: A Philharmonic Festival, Program C
 BEETHOVEN: Concerto in C for Piano, Violin, and Cello, Op. 56, "Triple"; Piano Concerto No. 5 in E-Flat, Op. 73, "Emperor"

9:00 p.m. PERFORMANCE TODAY

11:00 p.m. MUSIC OUT OF THE NIGHT AND INTO THE MORNING until 5:00 a.m. when **Morning Edition** begins.

Wednesdays

7:00 p.m. MILWAUKEE SYMPHONY ORCHESTRA
 Jul 2 STRAVINSKY: Concerto in D for Violin and Orchestra
 RAVEL: *Daphnis et Chloe*
 Jul 9 WAGNER: Overture to *The Flying Dutchman*
 MOZART: Concerto in A for Clarinet and Orchestra, K. 622
 BARTOK: Concerto for Orchestra
 Jul 16 IPPOLITO: Nocturne, for Orchestra
 CHOPIN: Concerto No. 2 in f for Piano and Orchestra, Op. 21
 BRAHMS: Symphony No. 2 in D, Op. 73
 Jul 23 BACH: Ricercare No. 2 from *Musical Offering*
 BERG: Concerto for Violin and Orchestra
 BRAHMS: Piano Quartet No. 1 in g, Op. 25
 Jul 30 SCHUMANN: Overture to *Manfred*, Op. 115
 MACMILLAN: *The Confession of Isobel Gowdie*
 BRAHMS: Concerto No. 1 in d for Piano, Op. 15

9:00 p.m. PERFORMANCE TODAY

11:00 p.m. MUSIC OUT OF THE NIGHT AND INTO THE MORNING until 5:00 a.m. when **Morning Edition** begins.

Thursdays

7:00 p.m. COLLECTORS' CORNER with HENRY FOGEL
 Jul 3 Rare Frederick Stock/CSO Recordings
 Jul 10 An All-Puccini Concert from 1954 – In honor of the 30th anniversary of his death, Pt. 1
 Jul 17 An All-Puccini Concert from 1954, Pt. 2
 Jul 24 Smetana's *Ma Vlast* in a Classic Live Performance

Jul 31 The Art of Oskar Fried, Conductor, Program 1
9:00 p.m. PERFORMANCE TODAY
11:00 p.m. MUSIC OUT OF THE NIGHT AND INTO THE MORNING until 5:00 a.m. when **Morning Edition** begins.

Fridays

7:00 p.m. CONCIERTO offers classical music presented in English and Spanish.
8:00 p.m. FIESTA! with ELBIO BARILARI
 Jul 4 Exiles and Emigres
 Jul 11 The Choro Music of Brazil
 Jul 18 Rising Stars: Kaia String Quartet
 Jul 25 To be announced
9:00 p.m. PERFORMANCE TODAY
11:00 p.m. MUSIC OUT OF THE NIGHT AND INTO THE MORNING until 5:00 a.m. when **People's Pharmacy** begins.

Saturdays

8:00 a.m. CAR TALK
9:00 a.m. WAIT WAIT DON'T TELL ME
10:00 a.m. THE BIONEERS: Revolution from the Heart of Nature
10:30 a.m. NEW LETTERS ON THE AIR
11:00 a.m. LYRIC OPERA OF CHICAGO

Jul 5 **MOZART: La Clemenza di Tito** (in Italian)
11:00 a.m. LA OPERA ON AIR! (begins)
 Jul 12 **VERDI: Falstaff**
 Jul 19 **BIZET: Carmen**
 Jul 26 **MOZART: Die Zauberflote (The Magic Flute)**
2:00 p.m. MAD ABOUT MUSIC
 Jul 5 Astrophisicist Martin Rees on broadcasting music into outer-space
 Jul 12 Author Stuart Woods on the power of Bernstein's Mahler Nine
 Jul 19 Film Director William Friedkin on discovering classical music
 Jul 26 Former Israel Prime Minister Ehud Barak on playing Chopin just before meeting Palestinian leader Yasser Arafat
3:00 p.m. CLASSICAL GUITAR ALIVE!
4:00 p.m. A PRAIRIE HOME COMPANION
 Jul 5 PHC's 40th Anniversary Celebration at Macalester College in St. Paul, MN
 Jul 12 To be announced
 Jul 19 TBA
 Jul 26 TBA
6:00 p.m. ALL THINGS CONSIDERED
7:00 p.m. MARIAN McPARTLAND'S PIANO JAZZ

Jul 5 Les Paul, guitarist
 Jul 12 Joe Locke, vibraphonist
 Jul 19 Carmen Lundy, vocalist
 Jul 26 Jessica Williams, pianist/composer
8:00 p.m. SWINGIN' DOWN THE LANE
 Jul 5 Billy Eckstine Centennial – An accomplished musician and vocalist
 Jul 12 Desert Island 69 – Jazz pieces treasured by a listener
 Jul 19 Sibling Rivalry – The Dorseys, Elgarts, McFarlanes, etc.
 Jul 26 Erskine Hawkins Centennial – The 20th century Gabriel would be 100 years old
9:00 p.m. ALL THESE BLUES WITH ROGER GATCHET
10:00 p.m. DREAMFARM RADIO
11:00 p.m. JAZZSET WITH DEE DEE BRIDGEWATER
 Jul 5 Triveni with Avishai Cohen and Guest Anat Cohen
 Jul 12 Ryan Truesdell and the Gil Evans Project at Newport
 Jul 19 Bill Frisell and Music of John Lennon
 Jul 26 Charles Lloyd at Newport
12:00 a.m. MUSIC OUT OF THE NIGHT AND INTO THE MORNING until 6:00 a.m. when **Weekend Edition** begins.

FM Radio Week-at-a-Glance

	Sunday	Monday	Tuesday	Wednesday	Thursday	Friday	Saturday	Monday through Friday				
5:00							5:00 a.m. People's Pharmacy	Regional Newscasts at: 5:33, 6:33, 7:33, and 10:06 a.m. 12:06, 2:06, and 5:33 p.m.				
6:00	Weekend Edition	Morning Edition	Morning Edition	Morning Edition	Morning Edition	Morning Edition	6:00 a.m. Weekend Edition					
7:00												
8:00	With Heart and Voice	Music News & Features	Music News & Features	Music News & Features	Music News & Features	Music News & Features	8:00 a.m. Car Talk	8:01 Marketplace Report				
9:00	Footlight Parade						9:00 a.m. Wait, Wait... Don't Tell Me	8:20 Nature Notes (Tu) Travelers in the Night (W) Playa Country (Th)				
10:00	Radiolab						10:00 a.m. Bioneers	8:30 Health in a Heartbeat				
11:00	Fresh Air Weekend with Terry Gross						10:30 a.m. New Letters	8:45 Insight				
12:00	People's Pharmacy (R)						11:00 a.m. Los Angeles Opera	9:00 Weather/News				
1:00	This American Life						Mad About Music	9:05 Dateline New Mexico				
2:00	Democracy Now!						3:00 p.m. Classical Guitar	9:15 Marketplace Tech Report				
3:00	Mountain Stage						Parents Journal	Knowledge	51 Percent	Moyers & Co.	Says You!	9:20 A Southwest Spotlight (F)
3:30							Marketplace	Marketplace	Marketplace	Marketplace	Marketplace	9:30 Radio MD News
4:00							All Things Considered	All Things Considered	All Things Considered	All Things Considered	All Things Considered	9:45 New Mexico Matters
4:30	Celtic Connections	PBS NewsHour	PBS NewsHour	PBS NewsHour	PBS NewsHour	PBS NewsHour	10:00 News/Statewide News					
5:00	All Things Considered	Chicago Symphony Orchestra	New York Philharmonic	Milwaukee Symphony Orchestra	Collectors' Corner	Concierto with Frank Dominguez	10:15 Engines of Our Ingenuity					
6:00	San Francisco Symphony	Performance Today	Performance Today	Performance Today	Performance Today	Fiesta! with Elbio Barilari	10:30 Composers' Datebook					
7:00	The Romantic Hours	Classical Music Out of the Night until 5:00 a.m.	Classical Music Out of the Night until 5:00 a.m.	Classical Music Out of the Night until 5:00 a.m.	Classical Music Out of the Night until 5:00 a.m.	Swingin' Down the Lane	10:45 Writer's Almanac					
8:00	Performance Today	Classical Music Out of the Night until 5:00 a.m.	Classical Music Out of the Night until 5:00 a.m.	Classical Music Out of the Night until 5:00 a.m.	Classical Music Out of the Night until 5:00 a.m.	All These Blues with Roger Gatchet	11:00 Weather/News					
9:00	Classical Music Out of the Night until 5:00 a.m.	Classical Music Out of the Night until 5:00 a.m.	Classical Music Out of the Night until 5:00 a.m.	Classical Music Out of the Night until 5:00 a.m.	Classical Music Out of the Night until 5:00 a.m.	DreamFarm Radio	11:15 Melinda's Garden Moment					
10:00						Jazzset with D.D. Bridgewater	11:30 Pulse of the Planet					
11:00						Classical Music Out of the Night until 6:00 a.m.	11:45 Isla Earth					
							12:00 News/Statewide News					
							12:15 Community Calendar					
							12:30 Moment in Time					
							12:45 Arts and Science					
							1:00 Weather/News					
							1:15 Sound Print					
							1:30 Loh Down on Science					
							1:45 A Moment of Science					
							2:00 News/Statewide News					
							2:15 Bird Note					
							2:20 A Southwest Spotlight (W)					
							2:30 America's Storyteller					
							2:45 90 Second Naturalist					
							3:00 Weather/News					
							3:06 Innovation Now/ Fitness Minute					
							3:15 The Plant Detective					
							3:25 Dateline New Mexico					
							3:55 Health Care 411 (Th)					
							6:57 Weather					
							9:00 Weather/News					
							12:00/ 3:00 a.m. Weather/News					

BUSINESS FRIENDS

 <p>Taylor Water Well Service Water Well Drilling Pump Sales & Service</p> <p>Carlsbad, NM A Prairie Home Companion, FM Wait, Wait...Don't Tell Me, FM</p>	 <p>Navyajo Refining Company Artesia, NM</p> <p>Music & News, FM</p>	 <p>The Citizens Bank Clovis, Fort Sumner, Texico, NM</p> <p>Market to Market</p>	 <p>CJ's Pharmacy... At your Service Portales, NM Family Health, FM Deutsche Welle Festival, FM Classical Guitar Alive, FM Mt. Stage, FM</p>	 <p>Merrill Lynch Wealth Management</p> <p>Roswell Branch Office Tel: 575.622.1642 Moyers & Company</p>	 <p>Portales NEWS-TRIBUNE pntonline.com</p> <p>Portales, NM Austin City Limits</p>
 <p>Hobbs Chamber of Commerce Hobbs, NM</p> <p>Masterpiece, Nova</p>	 <p>Clovis Community College Cultural Art Series Primetime Programming, TV</p>	 <p>Roswell, NM Classic Gospel</p>	<p>This space could be yours!</p> <p>For Underwriting opportunities, please call toll-free (888) 367-5369. Ask for Rena for TV, Amie for FM</p>	 <p>PLATEAU</p> <p>Evening News/ Public Affairs, FM BBC World News News 3 New Mexico</p>	 <p>Featherstone Development Corporation</p> <p>Roswell, NM Morning Edition, FM Jazz Programming, FM</p>
<p>New Mexico Humanities Council</p> <p>Albuquerque, NM (505) 277-3217 www.nmhum.org</p> <p>Morning Edition, FM Weekend Edition, FM</p>	<p>Lindsey Law Firm</p> <p>Daniel R. Lindsey Brett J. Carter</p> <p>Clovis, NM Nova</p>	 <p>Featherstone Development Corporation Roswell, NM</p> <p>Nature, Nightly Business Report, Star Gazers</p>	 <p>FEC A Touchstone Energy Cooperative Farmers' Electric Cooperative, Inc. of New Mexico Clovis, NM</p> <p>Ask This Old House</p>	 <p>Ruidoso, NM</p> <p>Morning Edition, FM Weekend Edition, FM</p>	<p>Roswell Jazz Festival</p> <p>Roswell, NM</p> <p>Piano Jazz, FM Jazz at Lincoln Center, FM</p>
<p>Maddox, Holloman & Kirksey, P.C., Attorneys and Counselors at Law</p> <p>Hobbs, NM Morning Edition All Things Considered, FM</p>	<p>This space could be yours!</p> <p>For Underwriting opportunities, please call toll-free (888) 367-5369. Ask for Rena for TV, Amie for FM</p>	 <p>Phil Brewer ATTORNEY & COUNSELOR</p> <p>Roswell, NM Car Talk, FM</p>	 <p>URENCO USA Eunice, NM</p> <p>Morning Edition, FM Weekend Edition, FM Evening Symphonies, FM Daytime & Weekend FM Pgms.</p>	 <p>CJ's Pharmacy... At your Service Portales, NM</p> <p>Antiques Roadshow, Healthy Body, Healthy Mind, McLaughlin Group, Sportslook</p>	 <p>FORD MERCURY LINCOLN Permian Ford-Lincoln-Mercury, Inc.</p> <p>Hobbs, NM Weekend ATC, FM All Things Considered, FM Car Talk, FM</p>
 <p>The Sewing Basket Clovis, NM</p> <p>Quilting Programs</p>	 <p>VALLEY MOWER CLINIC, INC Clovis, NM</p> <p>P. Allen Smith's Garden to Table</p>	<p>This space could be yours!</p> <p>For Underwriting opportunities, please call toll-free (888) 367-5369. Ask for Rena for TV, Amie for FM</p>	<p>Atwood, Malone, Turner & Sabin Attorneys at Law Roswell, NM</p> <p>Deutsche Welle Festival, FM All Things Considered, FM</p>	<p>Penasco Valley Telecommunications</p> <p>Health Show, Car Talk, Mountain Stage FM</p>	 <p>Hagerman Operating Company</p> <p>Roswell, NM American Experience, Masterpiece, Nova, PBS NewsHour</p>
 <p>ESBACH FINE ARTS ALBUQUERQUE, NM</p> <p>Antiques Roadshow, Masterpiece, PBS NewsHour</p>	 <p>NMDA New Mexico Department of Agriculture</p> <p>Las Cruces, NM America's Heartland</p>	 <p>Goodwill Industries</p> <p>Morning Edition, FM All Things Considered, FM</p>	 <p>Roosevelt County Electric Cooperative Portales, NM</p> <p>Antiques Roadshow</p>	 <p>WILL FERGUSON ASSOCIATES</p> <p>Albuquerque, NM</p> <p>BBC World News PBS NewsHour</p>	 <p>CHAVES COUNTY FARM AND LIVESTOCK BUREAU</p> <p>Dexter and Roswell, NM America's Heartland</p>
<p>Names and Numbers</p> <p>Telephone Book</p> <p>Evening News/Public Affairs Programming News 3 New Mexico</p>	<p>Hinkle, Hensley, Shanor & Martin, L.L.P.</p> <p>Roswell, Santa Fe, NM; Austin, Midland, TX</p> <p>Morning Edition, FM Prairie Home Companion, FM</p>	 <p>Muleshoe State Bank Muleshoe, TX</p> <p>Nature</p>	<p>This space could be yours!</p> <p>For Underwriting opportunities, please call toll-free (888) 367-5369. Ask for Rena for TV, Amie for FM</p>	<p>James Polk Stone Community Bank</p> <p>Clovis, Eunice, Hagerman, Hobbs, Portales, Roswell</p> <p>Austin City Limits</p>	<p>Living Desert Zoo & Gardens State Park Open Every Day Except Christmas</p> <p>Carlsbad, NM Austin City Limits, Nature, PBS NewsHour</p>
 <p>Clovis News Journal cnjonline.com</p> <p>Clovis, NM This Old House</p>	 <p>SECURITY STATE BANK</p> <p>Farwell, TX Antiques Roadshow</p>	 <p>EASTERN NEW MEXICO UNIVERSITY Portales, NM</p> <p>Austin City Limits</p>	 <p>High Country Agency, Inc. Ruidoso, NM</p> <p>Morning Edition, FM</p>	<p>First Presbyterian Church of Roswell</p> <p>Roswell, NM With Heart and Voice, FM</p>	 <p>THE BOX</p> <p>Clovis and Portales Wait, Wait...Don't Tell Me, FM</p>

A to Z — Channel HD3-1 — July 2014

Al Capone: Icon – Tuesday, 22nd, 7:00 p.m./12:00 midnight;
Wednesday, 23rd, 6:00 a.m./12:00 noon

American Woodshop – Wednesdays, 10:00 a.m.

America's Generations (3 Pts.) –
Thursdays, 11:00 a.m./4:30 p.m. (begins 17th)

America's Heartland – Mondays, 4:00 p.m.; Fridays, 6:00 a.m.

America's Test Kitchen – Wednesdays, 3:30 p.m.

Antiques Roadshow – Mondays, 7:00 p.m./12:00 midnight;
Tuesdays, 6:00 a.m./12:00 noon; Saturdays, 6:00 p.m.

Arts in Context – Tuesdays, 3:00 p.m.

Ask This Old House – Saturdays, 1:00 p.m. Sundays, 2:30 p.m.

Austin City Limits – Saturdays/Sundays, 10:00 p.m.

Beauty of Oil – Fridays, 11:00 a.m.

Best of Painting Wild Places – Fridays, 10:30 a.m.

Brooks—The City of 100 Hellos – Monday, 21st, 9:30 p.m.;
Tuesday, 22nd, 8:30 a.m./2:30 p.m.

Business in Society – Thursday, 10th, 6:30 p.m.

Capitol Fourth – Friday, 4th, 7:00 p.m./12:00 midnight;
Saturday, 5th, 8:00 p.m.

Carol Burnett: The Mark Twain Prize – Friday, 11th, 8:00 p.m.;
Saturday, 12th, 7:00 p.m.

Charlie Rose – Monday-Friday, 10:00 p.m. (10:30 p.m. 8th)

Charlie Rose: The Week – Fridays, 7:30 p.m. (except 4th);
Saturdays, 5:30 p.m. (except 5th);
Sundays, 1:00 p.m. (except 6th); Thursdays, 6:30 a.m.
(except 10th)

Classical Stretch – Monday-Friday, 5:00 a.m.

Closer to Truth – Tuesdays, 10:00 a.m.

Consuelo Mack WealthTrack – Tuesdays, 4:00 p.m.

Cool Spaces! (4 Pts.) – Mondays, 11:00 a.m./4:30 p.m.

Creative Living – Thursdays, 9:00 p.m.

Earth: The Inside Story – Monday, 21st, 6:00 a.m.



Continued from Page 18

- Ecosense for Living** – Wednesdays, 4:00 p.m.
Ellen Degeneres: The Mark Twain Prize – Friday, 18th, 8:00 p.m.;
Saturday, 19th, 7:00 p.m.
Emery Blagdon and His Healing Machine – Friday, 25th, 9:30 p.m.
European Journal – Fridays, 5:00 p.m.
Expeditions with Patrick McMillan – Fridays, 1:00 p.m.
Firehouse Kitchen – Wednesdays, 3:00 p.m. (except 9th)
Fishing Behind the Lines – Mondays, 3:30 p.m.
Fit 2 Stitch – Thursdays, 10:30 a.m.
Fons & Porter's Love of Quilting – Thursdays, 9:00 a.m.
Friend Indeed: The Bill Sackter Story –
Wednesday, 9th, 8:00 a.m./2:30 p.m.
Front and Center – Thursdays, 3:30 p.m.
Frontline – Tuesdays, 9:00 p.m.;
Wednesdays, 11:00 a.m./4:30 p.m. (4:00 p.m. on 9th)
G-Man: The Rise and Fall of Melvin Purvis –
Wednesday, 23rd, 8:00 a.m./2:00 p.m.
Getting Away Together – Wednesdays, 9:30 a.m.
Globe Trekker – Fridays, 9:00 a.m./3:00 p.m.
Good Neighbors – Sundays, 6:30 p.m.
Grab – Monday, 28th, 6:00 a.m.
Healthy Body Healthy Mind – Tuesdays, 9:00 a.m.
History Detectives Special Investigations (4 Pts.) –
Tuesdays, 8:00 p.m.; Wednesdays, 7:00 a.m./1:00 p.m. (1:30 p.m. on 9th);
Saturdays, 4:00 p.m.; Sunday, 6th, 12:30 p.m.
Hometown – Saturdays, 1:30 p.m.
I Am – Tuesday, 1st, 8:00 a.m./2:00 p.m.
In Good Shape – Thursdays, 8:30 p.m.; Mondays, 10:00 a.m.
In Julia's Kitchen – Saturdays, 11:00 a.m.
In the Americas – Thursdays, 3:00 p.m.
Into the Wild: Edison, Ford & Friends – Friday, 4th, 9:30 p.m.
Joy of Painting – Fridays, 10:00 a.m.
Jubilee – Fridays, 12:00 noon (ends 11th)
Just Seen It – Fridays, 4:00 p.m.
Knit and Crochet Now! – Thursdays, 10:00 a.m. (begins 10th)
Knitting Daily – Thursdays, 10:00 a.m. (ends 3rd)
Last Tango in Halifax – Sundays, 7:00 p.m./11:00 p.m.
Life Focus – Tuesdays, 3:30 p.m.
Life on the Line – Thursdays, 3:00 p.m. (begins 24th)
Little League: A History – Monday, 7th, 9:00 p.m.;
Tuesday, 8th, 8:00 a.m./2:00 p.m.
Live from the Artists Den – Mondays, 12:00 noon (begins 21st)
Love of Country, Love of People (Mormon Tabernacle Choir) –
Sunday, 6th, 12:00 noon
Many Lovers of Jane Austen – Wednesday, 30th, 8:00 a.m./2:00 p.m.
Marina at West Point: Unity Through Diversity –
Saturday, 5th, 7:00 p.m.
Market to Market – Sundays, 1:30 p.m.
Mark Twain, Part One (2 hrs.) –
Tuesday, 29th, 7:00 p.m./12:00 midnight;
Wednesday, 30th, 6:00 a.m./12:00 noon
Martha Bakes – Saturdays, 3:30 p.m.
Martha Stewart's Cooking School – Saturdays, 3:00 p.m.
Masterpiece Mystery! –
"Endeavour II" – Sundays, 8:00 p.m./12:00 midnight (ends 20th);
Mondays, 7:00 a.m./1:00 p.m. (ends 21st)
"Poirot XII" – Sundays, 8:00 p.m./12:00 midnight (begins 27th);
Mondays, 7:00 a.m./1:00 p.m. (begins 28th)
Mind Over Murder – Wednesdays, 16th, 8:00 a.m./2:00 p.m.
Motorweek – Saturdays, 2:30 p.m.
Moyers & Company – Thursdays, 6:00 a.m.; Fridays, 4:30 p.m.
My Wild Affair – Wednesdays, 7:00 p.m./12:00 midnight (begins 16th);
Thursdays, 7:00 a.m./12:00 noon (begins 17th);
Saturdays, 11:00 p.m. (begins 19th); Sundays, 3:00 p.m. (begins 20th)
Nature – Wednesdays, 7:00 p.m./12:00 midnight (2nd, 9th only);
Thursdays, 7:00 a.m./12:00 noon (3rd, 10th only); Saturdays, 11:00 p.m.
(5th, 12th only); Mondays, 6:00 a.m. (except 21st, 28th)
Nightly Business Report – Monday-Friday, 5:30 p.m.
Nova – Wednesdays, 8:00 p.m.; Thursdays, 8:00 a.m./1:00 p.m.;
Saturdays, 12:00 midnight; Sundays, 4:00 p.m.
Out of Order – Monday, 14th, 9:30 p.m.;
Tuesdays, 15th, 8:30 a.m./2:30 p.m.
P. Allen Smith's Garden Home – Mondays, 10:30 a.m. (ends 7th)
P. Allen Smith's Garden to Table – Mondays, 10:30 a.m. (begins 14th)
PBS Newshour – Monday-Friday, 6:00 p.m.
PBS Newshour: Weekend – Saturday-Sunday, 5:00 p.m.
PBS Previews: The Roosevelts – Saturday, 5th, 5:30 p.m./9:30 p.m.;
Sunday, 6th, 5:30 p.m.; Friday, 18th, 9:30 p.m.
POV – Mondays, 8:00 p.m.; Tuesdays, 7:00 a.m./1:00 p.m.;
Saturdays, 8:30 p.m. (except 4th; 9:00 p.m. on 12th)
Prayers of the Ancient Ones – Tuesday, 1st, 7:00 a.m./1:00 p.m.
Quilt in a Day – Thursdays, 9:30 a.m.
Red Green Show – Thursdays, 8:00 p.m.
Religion & Ethics Newsweekly – Tuesdays, 10:30 a.m.;
Sundays, 2:00 p.m.
Report from Santa Fe – Tuesdays, 5:00 p.m.
Rhythm Abroad – Fridays, 6:30 a.m.
Richard Bangs' Adventures – Thursdays, 2:00 p.m.
Running of the Bulls – Wednesday, 2nd, 8:00 a.m./2:00 p.m.
Sara's Weeknight Meals – Mondays, 9:30 a.m.
Scully/The World Show – Tuesdays, 4:30 p.m.
Second Opinion – Tuesdays, 9:30 a.m.
Secrets of the Dead –
"Bones of the Buddha" – Wednesday, 2nd, 9:00 p.m.;
Thursday, 3rd, 11:00 a.m./4:30 p.m.; Sunday, 6th, 3:00 p.m.
"Mona Lisa Mystery" – Wednesday, 9th, 9:00 p.m.;
Thursday, 10th, 11:00 a.m./4:30 p.m.; Sunday, 13th, 3:00 p.m.
Sex in the Wild – Wednesdays, 9:00 p.m. (begins 16th)
Shift Change – Monday, 28th, 9:00 p.m.; Tuesday, 8:00 a.m./2:00 p.m.
Shirley Temple: America's Little Darling – Friday, 4th, 8:30 p.m.
Song of the Mountains – Tuesdays, 11:00 a.m.;
Thursdays, 7:00 p.m.; Fridays, 7:00 a.m.
Start Up – Fridays, 1:30 p.m.
Taste of History – Mondays, 9:00 a.m.
Tavis Smiley – Monday-Friday, 11:00 p.m./11:30 p.m.
This American Land – Mondays, 3:00 p.m.
This Old House – Saturdays, 12:00 noon/12:30 p.m.
This Old House Hour – Thursdays, 12:00 midnight;
Fridays, 8:00 a.m./2:00 p.m.; Saturdays, 10:00 a.m.
Time Scanners (3 Pts.) – Tuesdays, 7:00 p.m./12:00 midnight (begins
1st); Wednesdays, 6:00 a.m./12:00 noon (12:30 p.m. on 9th)
Tina Fey: The Mark Twain Prize – Friday, 25th, 8:00 p.m.;
Saturday, 26th, 7:00 p.m.
Travel Detective – Wednesdays, 9:00 a.m.
Vicar of Dibley – Sundays, 6:00 p.m.
Vicious – Sundays, 9:30 p.m.; Mondays, 8:30 a.m./2:30 p.m.
Victory Garden's Ediblefeast – Saturdays, 11:30 a.m.
Wai Lana Yoga – Monday-Friday, 5:30 a.m.
Washington Week – Fridays, 7:00 p.m./12:00 midnight (except 4th);
Sundays, 12:30 p.m./5:30 p.m. (except 5th)
Welcome to My Studio – Fridays, 11:30 a.m.
Woodsongs – Fridays, 12:00 noon (begins 18th)
Woodturning Workshop – Wednesdays, 10:30 a.m.
Woodwright's Shop – Saturdays, 2:00 p.m.
Xerox Rochester International Jazz Festival –
Mondays, 12:00 noon (ends 14th)
You Should Know – Thursdays, 9:30 p.m.

This American Life

KENW is very pleased to announce the addition of **THIS AMERICAN LIFE** to our Public Radio Network schedule. Each week this popular series is broadcast on more than 500 radio stations to over 2 million listeners. It is also often the most popular podcast in the country, with about one million weekly downloads. It has won every major broadcasting award.

There's a theme to each weekly episode, and a variety of stories on that theme. It's mostly true stories about everyday people, though not always. There's a lot more to the series, but it's sort of hard to describe. Some words do come to mind—interesting, personal, emotional, surprising, and fun—but even they don't do it justice. Just listen.



Sundays, 1:00 p.m. on KENW-FM

**(DEMOCRACY NOW moves
from 1:00 p.m. to 2:00 p.m. on Sundays)**

NON PROFIT ORG
U.S. POSTAGE PAID
PORTALES NM 88130
PERMIT 15



Eastern New Mexico University
1500 S. Avenue K
Portales, New Mexico 88130