

# Q2•3

Program Guide KENW-TV/FM  
Eastern New Mexico University  
January 2018



*Victoria, Season 2*  
MASTERPIECE

# When to watch from *A to Z* Channel 3-2 – January 2018

## Amanpour on PBS –

Tuesdays–Thursdays, 11:00 p.m. (11:30 p.m. on 2nd)  
**American Woodshop** – Saturdays, 6:30 a.m.; Thursdays, 11:00 a.m.  
**America's Heartland** – Saturdays, 6:30 p.m.  
**America's Test Kitchen** – Saturdays, 7:30 a.m.  
**Antiques Roadshow** – Mondays, 7:00 p.m./8:00 p.m. (8th only)/11:00 p.m.;  
 Sundays, 7:00 a.m.  
**Ask This Old House** – Saturdays, 4:00 p.m.  
**Austin City Limits** – Saturdays, 9:00 p.m./12:00 midnight  
**BBC Newsnight** – Fridays, 5:00 p.m./8:30 p.m.  
**BBC World News** – Weekdays, 6:30 a.m./4:30 p.m.  
**Beads, Baubles and Jewels** – Mondays, 12:30 p.m.  
**Beauty of Oil Painting** – Fridays, 12:30 p.m.; Saturdays, 12:00 noon  
**Body Electric** – Weekdays, 5:30 a.m.  
**Classic Arts Showcase** – Sunday–Saturday, 1:00 a.m.–5:00 a.m.  
**Classic Gospel** – Sundays, 8:00 a.m./4:00 p.m.  
**Classical Stretch** – Weekdays, 6:00 a.m.  
**Closer to Truth** – Sundays, 2:00 p.m. (except 28th)  
**Cooks Country** – Mondays, 11:30 a.m.; Saturdays, 8:00 a.m.  
**Consuelo Mack WealthTrack** – Fridays, 7:30 p.m.  
**Creative Living** – Tuesdays/Thursdays 12:00 noon;  
 Saturdays, 2:00 p.m.; Tuesdays, 9:30 p.m. (except 9th, 23rd)  
**Cultura** – Sundays, 12:00 noon (28th only)  
**Fall and Rise of Reginald Perrin** – Saturdays, 8:00 p.m. (begins 6th)  
**Fishing Behind the Lines** – Wednesdays, 11:00 a.m.  
**Fons & Porter's Love of Quilting** – Saturdays, 1:30 p.m.;  
 Wednesdays, 12:30 p.m.  
**Focus on Europe** – Thursdays, 5:00 p.m.  
**Fresh Quilting** – Saturdays, 1:00 p.m.  
**Frontline** – Tuesdays, 10:00 p.m.; Thursdays, 7:00 p.m.  
 “Abacus: Small Enough to Jail” – 2nd, 4th  
 “Rape on the Night Shift” – 16th, 18th  
 “Exodus” (2 hrs.) – 23rd (8:00 p.m.), 25th  
 “North Korea's Deadly Dictator” – 30th, Feb. 1st  
**Globe Trekker** – Sundays, 11:00 a.m.  
**Great British Baking Show** – Saturdays, 8:30 a.m.  
**In Focus New Mexico** – Sundays, 12:30 p.m. (except 28th)  
**It's Sew Easy** – Saturdays, 5:30 p.m.  
**Jazzy Vegetarian** – Saturdays, 2:30 p.m.  
**Joy of Music** – Sundays, 9:00 a.m.  
**Joy of Painting** – Saturdays, 11:30 a.m.  
**Knit and Crochet Now!** – Tuesdays, 11:30 a.m.  
**Knitting Daily** – Saturdays, 3:00 p.m.  
**Lawrence Welk** – Saturdays, 7:00 p.m.  
**Market to Market** – Fridays, 7:00 p.m.  
**Masterpiece** –  
 “Victoria,” **Season 1** – Sunday, 7th, 7:00 p.m.–10:00 p.m.  
 (episodes 8, 9, and 10 back-to-back)  
 “Victoria,” **Season 2** – Sundays, 8:00 p.m. (begins 14th)  
 Fridays, 11:00 p.m. on 19th; 10:00 p.m. on 26th  
**Motorweek** – Saturdays, 9:30 a.m.  
**Music & the Spoken Word** – Sundays, 9:30 a.m.  
**Nature** – Wednesdays, 7:00 p.m.; Saturdays, 11:00 p.m.  
 “Snow Monkeys” – 3rd, 6th  
 “Yosemite” – 10th only  
 “Arctic Wolf Pack” – 17th, 20th  
 “Animal Misfits” – 24th, 27th  
 “Animals with Cameras Miniseries” – begins 31st  
**New Mexico True TV** – Sundays, 12:00 noon (except 28th)  
**Nightly Business Report** – Weekdays, 5:30 p.m.  
**Nova** – Wednesdays, 8:00 p.m.; Saturdays, 10:00 p.m.; Sundays, 12:00 mid.  
 “Invisible Universe Revealed” – 3rd, 6th, 7th  
 “Black Hole Apocalypse” (2 hrs.) – 10th, 13th, 14th  
 “Hagia Sophia – Istanbul's Ancient Mystery” – 17th, 20th, 21st  
 “Petra – Lost City of Stone” – 24th, 27th, 28th  
 “The Impossible Flight” (2 hrs.) – 31st, Feb. 3rd, 4th  
**P. Allen Smith's Garden Home** – Saturdays, 10:00 a.m.  
**Painting and Travel** – Sundays, 6:00 a.m.  
**Paint This with Jerry Yarnell** – Saturdays, 11:00 a.m.  
**Pati's Mexican Table VI** – Mondays, 11:00 a.m.  
**PBS NewsHour** – Weekdays, 6:00 p.m./12:00 midnight  
**PBS NewsHour Weekend** – Sundays, 5:00 p.m.  
**Quilt in a Day** – Saturdays, 12:30 p.m.  
**Red Green Show** – Thursdays, 9:30 p.m.; Saturdays, 8:30 p.m.  
**Report from Santa Fe** – Saturdays, 6:00 p.m.  
**Scully/The World Show** – Tuesdays, 5:00 p.m.

## A to Z listings for 3-1 are on pages 18 & 19

**Second Opinion** – Wednesdays, 10:00 p.m.  
 Sundays, 6:30 a.m./3:00 p.m. (no 3:00 p.m. play on 28th)  
**See it All** – Tuesdays, 12:30 p.m.  
**Sewing with Nancy** – Saturdays, 5:00 p.m.  
**Sit and Be Fit** – Monday, Wednesday, Friday, 12:00 noon  
**Song of the Mountains** – Thursdays, 8:00 p.m. (except 4th, 25th)  
**Sportslook** – Thursdays, 9:00 p.m. (begins 25th)  
**Star Gazers** – Wednesdays, 10:57 p.m.; Saturdays, 10:57 a.m./9:57 p.m.;  
 Sundays 2:57 p.m./10:57 p.m.; Mondays 10:57 p.m.  
**Taste of History** – Saturdays, 10:30 a.m.  
**This Old House** – Saturdays, 3:30 p.m.; Wednesdays, 10:30 p.m.  
**Wai Lana Yoga** – Weekdays, 5:00 a.m.  
**Washington Week** – Fridays, 8:00 p.m.; Sundays, 5:30 p.m.  
**Welcome to My Studio** – Thursdays, 12:30 p.m.; Saturdays, 4:30 p.m.  
**Well Read** – Sundays, 2:30 p.m. (except 28th); Wednesdays, 5:00 p.m.  
**Woodsmith Shop** – Saturdays, 6:00 a.m.; Wednesdays, 11:30 a.m.  
**You Should Know** – Tuesdays, 9:00 p.m. (30th only)

## Special Programs

**88 Days in the Mother Lode: Mark Twain Finds His Voice** –  
 Tuesday, 23rd, 10:00 p.m.  
**Alan Cumming Sings Sappy Songs** – Friday, 5th, 10:00 p.m.;  
 Sunday, 7th, 11:00 p.m.  
**American Experience** –  
 “Influenza 1918” – Tuesday, 2nd, 8:00 p.m.  
 “Into the Amazon” (2 hrs.) – Tuesday, 9th, 8:00 p.m.;  
 Sunday, 14th, 10:00 p.m.  
 “Secret of Tuxedo Park” – Tuesday, 16th, 8:00 p.m.;  
 Sunday, 21st, 10:00 p.m.  
 “Andrew Carnegie” – Tuesday, 30th, 8:00 p.m.  
**American Masters “Lorraine Hansberry”** (2 hrs) – Friday, 19th, 9:00 p.m.  
**BBQ with Franklin** – Saturdays, 7:00 a.m.; Thursdays, 11:30 a.m.  
**Best of the Boston Pops** – Friday, 26th, 9:00 p.m.  
**Bluegrass Underground “Parker Millsap”** – Thursday, 4th, 8:30 p.m.  
**Christopher Kimball's Milk Street** – Tuesdays, 11:00 a.m.  
**Death of the Old West** – Tuesday, 2nd, 9:00 p.m.  
**Finding Your Roots** – Tuesdays, 7:00 p.m. (ends 16th)  
**Fleeced: Speaking Out About Senior Financial Abuse** –  
 Friday, 12th, 11:30 p.m.; Tuesday, 16th, 9:00 p.m.;  
 Sunday, 28th, 12:30 p.m.  
**Great Performances** –  
 “From Vienna: The New Year's Celebration” –  
 Monday, 1st, 8:00 p.m.  
 “Tony Bennett and Lady Gaga” – Friday, 5th, 9:00 p.m.;  
 Sunday, 7th, 10:00 p.m.; Sunday, 14th, 7:00 p.m.  
**Great Performances at the Met “Norma”** (3 hrs.) – Sunday, 28th, 1:00 p.m.  
**Healthy Minds** – Sundays, 3:30 p.m. (begins 7th, except 28th)  
**Independent Lens** – Mondays, 9:00 p.m.  
 “Untold Tales of Armistead Maupin” – 1st (9:30 p.m.)  
 “Unrest” – 8th  
 “I Am Not Your Negro” – 15th  
 “The Force” – 22nd  
 “I Am Another You” – 29th  
**Music City Roots Live from the Factory** – Thursdays, 10:00 p.m.  
**Our Stories (New Mexico Veterans): Vietnam** (3 Pts.) –  
 Sundays, 6:00 p.m. (begins 7th)  
**Piano Guys at Redrock** – Friday, 12th, 10:30 p.m.; Sunday, 28th, 11:00 p.m.  
**Queen Elizabeth's Secret Agents** (3 Pts.) –  
 Sundays, 7:00 p.m./10:00 p.m. (begins 28th)  
**Right to Risk: A 15 Day Journey through Arizona's Grand Canyon** –  
 Wednesday, 3rd, 9:00 p.m.; Friday, 5th, 11:00 p.m.;  
 Sunday, 14th, 10:00 a.m.  
**Secrets of the Dead “Scanning the Pyramids”** –  
 Wednesday, 24th, 9:00 p.m.; Sunday, 28th, 10:00 a.m.  
**Suffragettes Forever! The Story of Women and Power** (3 Pts.) –  
 Mondays, 8:00 p.m. (begins 15th); Sundays, 6:00 p.m. (begins 28th)  
**Today's Wild West** – Thursdays, 9:00 p.m. (ends 18th)  
**Tony Bennett: Gershwin Award for Popular Song** – Friday, 12th 9:00 p.m.  
**Travel Detectives IV** – Sundays, 1:30 p.m. (begins 1st, except 28th);  
 Mondays, 10:30 p.m. (begins 7th)  
**True North: The Sean Swarner Story** – Sunday, 7th, 10:00 a.m.;  
 Tuesday, 9th, 10:00 p.m.; Thursday, 11th, 7:00 p.m.  
**Understanding the Opioid Epidemic** – Wednesday, 17th, 9:00 p.m.;  
 Sunday, 21st, 10:00 a.m./7:00 p.m./11:00 p.m.  
**We'll Meet Again** (6 Pts.) – Tuesdays, 7:00 p.m. (begins 23rd);  
 Sundays, 9:00 p.m. (begins 28th)

# Q2·3 Program Guide

THE MAGAZINE FOR THE FRIENDS OF PUBLIC BROADCASTING - JANUARY 2018

**Q2-3 Program Guide** is published each month by the Broadcast Center, a non-profit public service division of Eastern New Mexico University.

**Q2-3 Program Guide** (Cue to 3) is available to friends contributing \$35 per year or more to the support of public broadcasting. Senior Citizen and Student memberships are available for \$25. All contributions are tax deductible. Donations should be made payable to Friends of **KENW-TV** or to Friends of **KENW-FM** or **KMTH-FM**.

**KENW-TV**, Channel 3, can be seen on UHF TV analog translators in the following areas:  
Tucumcari - Channel 32; Ft. Sumner - Channel 34.

**KENW-TV digital transmitters** are located in: Artesia; Carlsbad; Ft. Sumner; Hobbs; Portales/Clovis; Roswell; Tucumcari; Ruidoso; Mescalero

**KENW-FM**, 89.5 MHz, Portales; **KMTH-FM**, 98.7 MHz, Maljamar; **KENM-FM**, 88.9 MHz, Tucumcari; NM; **KENU-FM**, 88.5 MHz, Des Moines, NM; **KENG-FM**, 88.5 MHz; Ruidoso, NM; **KENE-FM**, 88.1 MHz, Raton, and FM translators in:  
Apache Springs - 90.9 MHz Las Vegas - 88.1 MHz  
Clayton - 93.5 MHz Roswell - 91.1 MHz  
Des Moines - 106.1 MHz Wagon Mound - 92.1 MHz  
Ft. Sumner - 91.7 MHz

**Telephone:** From Cannon A.F.B., Clovis, Portales, and Roosevelt County, call (575) 562-2112. Others, call toll-free 1-888-FOR-KENW (367-5369).  
**Fax:** (575) 562-2590

**Mailing Address:**  
KENW-TV/FM  
52 Broadcast Center, ENMU  
1500 South Avenue K  
Portales, NM 88130

**Web site:** www.kenw.org  
**E-Mail:** kenw@enmu.edu  
kenwfm@enmu.edu

We always welcome your comments and/or suggestions:  
Toll-free 1-888-FOR-KENW (367-5369)

- American Experience** premieres "Into the Amazon," the story of Theodore Roosevelt's perilous 1914 journey down the mysterious "River of Doubt," followed by "The Secret of Tuxedo Park, the story of a Wall Street tycoon and how he helped win World War II.  
"The Impossible Flight" on **Nova** is a two-hour special that follows two Swiss pilots as they construct and then fly their zero fuel, solar powered plane around the world.
- British history comes alive in three new series: the three-part **Queen Elizabeth's Secret Agents**; a new second season of "Victoria" on **Masterpiece**; and the new three-part **Suffragettes Forever! The Story of Women and Power**.
- Frontline** presents the two-hour "Exodus," the unforgettable, firsthand stories of millions fleeing for Europe.  
In "Scanning the Pyramids" on **Secrets of the Dead**, scientists and engineers use 3D technology and thermal engineering to make the greatest discovery in Egypt's Khufu pyramid in more than 1,000 years.  
**Nova** journeys to the frontiers of black hole science in a new two-hour special, "Black Hole Apocalypse."  
**We'll Meet Again with Ann Curry** is a six-part series that brings together people who, against all odds, have a chance to reunite with someone who transformed their lives.
- Independent Lens** continues its season of presenting intriguing documentaries, with: "Unrest," the story of one woman's struggle with chronic fatigue syndrome (CFS), also known as myalgic encephalomyelitis (ME); "I Am Not Your Negro," a radical examination of race in America today and also one of the most acclaimed films of the year and nominee for the Academy Award for Best Documentary; and "The Force," a mesmerizing look at the troubled Oakland Police Department and its efforts to regain the public's trust.  
**True North: The Sean Swarner Story** is an inspiring account of the only two-time cancer patient to complete the Explorers Grand Slam—scaling the highest point on all seven continents, then hiking to both the North and South Poles.  
**Our Stories: Vietnam** is a three-part series produced by KRWG-TV in Las Cruces that tells the stories of Vietnam Veterans from New Mexico.  
**American Masters** presents "Lorraine Hansberry," whose 1959 "A Raisin in the Sun" changed the face of American theater.

Please Note: In mid-January 2018, viewers in the Hobbs/Lovington area will need to rescan their channels because KENW-TV in that area is moving from Channel 42 to Channel 24.

## Q2·3 Program Guide Staff

Editor: **Linda Stefanovic**  
Program Log Descriptions: **Mike Rusher**

Eastern New Mexico University is an affirmative action and equal opportunity employer. The University does not discriminate on the basis of race, color, national origin, sex, or handicap in its programs, activities, or employment. Persons seeking additional information about the University's nondiscrimination policy should contact the Executive Director of Planning & Analysis, ENMU, Station #2, Portales, NM 88130.

### ENMU BOARD OF REGENTS

*President*  
**Mr. Dan Patterson**  
*Vice President*  
**Mr. Terry Othick**  
*Secretary / Treasurer*  
**Mr. KeKoa Von Schrittz**  
*Member*  
**Ms. Jane Christensen**  
*Member*  
**Mr. Ed Tatum**

### EASTERN NEW MEXICO UNIV.

*President*  
**Dr. Jeff Elwell**  
*Vice President for Academic Affairs*  
**Dr. Jamie Laurenz**  
*Vice President for Academic Support*  
**Mr. Clark Elswick**  
*Vice President for Business Affairs*  
**Mr. Scott Smart**  
*Vice President for Student Affairs*  
**Dr. Jeffrey Long**

### BROADCAST CENTER STAFF

*Director of Broadcasting*  
**Duane W. Ryan**  
*Business Manager*  
**Terri Doerr**  
*Accountant*  
**Carla Benavidez**  
*Director of Engineering*  
**Jeff Burmeister**  
*Engineers*  
**Rick Counts**  
**Porfirio Delgado**  
**Martin Quintero**  
*Business Affairs Consultant*  
**Jim Zupancic**

### AREA ADMINISTRATOR

*Executive Director, Planning & Analysis*  
**Dr. Patrice Caldwell**

### KENW-TV STAFF

*Development Officer*  
**Sheryl Borden**  
*Development/Promotion Director*  
**Rena Garrett**  
*Producer/Director, TV*  
**Allan Crawford**  
*Production/Community Services Consultant*  
**Don Criss**  
*Programming Consultant*  
**Linda Stefanovic**

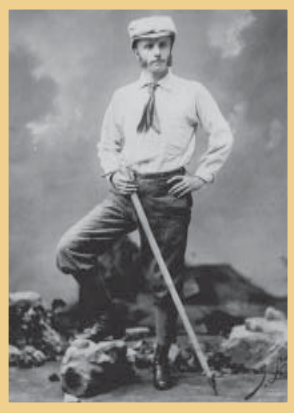
*Operations Director/ Assistant Program Director*  
**Sean Moore**  
*Assistant Operations Director*  
**Justin Robertson**  
*Master Control Operators, TV*  
**David Asplund**  
*Administrative Assistants*  
**Vickie Brisco**  
**Mike Rusher**  
*Graduate Assistant for News*  
**Lonnie Berry**

### KENW/KMTH-FM STAFF

*News Director, FM*  
**Janet Lyn Bresenham**  
*Development Director, FM*  
**Amie Griffith**  
*Operations Director, FM*  
**Shannon Hearn**  
*Audio Engineer*  
**Mickey Morgan**  
*Administrative Assistant*  
**Suzanne West**

### BROADCAST CENTER STUDENT STAFF EMPLOYEES

Brooklyn Biel	Aubrey McCall	Michael Poynor
Phoebe Green	Rochelle McClenton	Spencer Purcell
Jordan Honeycutt	Kaitlin McKay	Samuel Randall
Dylan Knox	Izaiaz Mendoza	Gevyn Stockard
Olivia Land	Bill Moyer	Cecilia Vazquez
Valerie Martinez	Johanna Poirier	Karissa Waldrop
		Kyanna Walton



Theodore Roosevelt, 1881

## *Into the Amazon*

“Into the Amazon,” a two-hour **American Experience**, tells the remarkable story of the 1914 journey taken by President Theodore Roosevelt and legendary Brazilian explorer Candido Mariano Da Silva Rondon into the heart of the South American rainforest to chart an unexplored tributary of the Amazon River. Roosevelt spent eight harrowing weeks in one of the most remote and inhospitable

places on earth, battling tenacious insects, deadly rapids, fever, hunger, and exhaustion. Before it was over, one member of the expedition had drowned, another had committed murder, and a third was abandoned to perish in the jungle.

On January 21, 1914, a 55-year old Theodore Roosevelt set off on the joint American/Brazilian expedition to map a mysterious Amazon River known only as the River of Doubt. The expedition was plagued with trouble from the outset. The Americans had arrived with a mountain of baggage that Colonel Rondon’s men soon found necessary to abandon along the trails. Temperatures of 100 degrees and insufferable humidity set the Americans on edge, and mosquitoes, blood-sucking sandflies, and sweat bees were a constant plague. Malaria and dysentery spread through the group.

More than a month after the expedition set out, they dipped their paddles into the River of Doubt for the first time. Tangled vines threatened to capsize canoes, and piranha and anaconda filled the waters. The men were forced to abandon the river and cut a path through the jungle, carrying their boats and equipment with them.

One month later, a deep cut on Roosevelt’s leg became infected. Wracked with fever and the onset of malaria, Roosevelt begged to be left behind to die, but his son, Kermit, and Rondon refused to go on without him.

On April 26, after paddling more than 400 miles, the expedition reached the mouth of the River of Doubt, which had claimed the lives of three men and nearly killed Roosevelt. It would henceforth be known as the Rio Roosevelt.

“Into the Amazon” on **American Experience** airs on 3-2 Tuesday, the 9th at 8:00 p.m. and Sunday, the 14th at 10:00 p.m. On 3-1, it airs Tuesday, the 9th at 7:00 p.m. and Wednesday, the 10th at 2:00 p.m.

## *The Secret of Tuxedo Park*

In the fall of 1940, Hitler’s armies were encamped along the English Channel, preparing for an invasion of Britain. In a desperate bid to form a technological alliance with the then-neutral United States, British Prime Minister Winston Churchill sent a small team of scientists on a clandestine mission to deliver his country’s most valuable military secrets to America’s scientific leaders.

“The Secret of Tuxedo Park” on **American Experience** recounts the story of Alfred Lee Loomis, a mysterious Wall Street tycoon, who became the recipient of the most precious item in Britain’s military collection.

For years, Loomis had spent his days earning vast fortunes on Wall Street and his weekends working with the world’s leading scientists at Tower House, his private laboratory in Tuxedo Park, outside New York City. As the 1930s drew to a close, the rumblings from Europe became increasingly dire. Loomis dedicated himself to finding a way to counter Germany’s technological edge. He soon focused all his energies on a vital new technology: microwave radar.

When the Germans invaded France in early 1940, President Roosevelt created an organization to develop new weapons that would be needed in a war with Nazi Germany. He put Loomis in charge of the microwave radar section, but his work came to a halt when nobody knew how to build one vital component that would make microwave radar a reality. Then, in a daring move, Churchill handed the Americans his country’s most precious military secrets—jet engines, anti-submarine devices, explosives, and, most importantly, a new type of radio tube called the cavity magnetron—the very thing Loomis’s microwave radar team needed.

Thanks to Loomis and his team of nearly 4,000 people, the U.S. would go to war in December 1941 with a radar program as advanced as any in the world. During the invasion of Normandy, airplanes equipped with radar sets bombarded the coastline, radar beacons guided parachute troops, a navigation system known as landing craft control directed the invasion forces, and radar-directed guns protected the infantry from air attack.

“The Secret of Tuxedo Park” on **American Experience** will be broadcast on 3-2 Tuesday, the 16th at 8:00 p.m. and Sunday, the 21st at 10:00 p.m. On 3-1, it airs Tuesday, the 16th at 7:00 p.m. and Wednesday, the 17th at 2:00 p.m.

# NOVA

## *The Impossible Flight*

On March 9, 2015, Solar Impulse II took off from Abu Dhabi on the greatest aviation undertaking of our time. Its mission was to be the first no fuel, solar-powered airplane to fly around the world. It was a feat twelve years in the making, and was anything but a sure bet. Now, with unique access to the undertaking, “The Impossible Flight” on **Nova** has a front-row seat on the adventure of a lifetime.

The two-hour episode follows the intrepid Swiss pilots at the heart of the project—Bertrand Piccard, who made the first non-stop balloon flight around the world in 1999, and André Borschberg, a former Swiss Air Force fighter pilot. These two men were bent on pushing the boundaries of human flight and sending a message to the world about the potential for renewable energy.

They, along with a team of brilliant engineers, designed and built the Solar Impulse from scratch. Viewers fly along with them on their hair-raising flights, some of which lasted multiple exhausting days,



and discover how they overcame seemingly insurmountable challenges to build the first solar plane capable of flying around the world.

“The Impossible Flight” on **Nova** airs on 3-2 Wednesday, the 31st at 8:00 p.m. and Saturday, February 3rd at 10:00 p.m. On 3-1, it airs Friday, February 2nd at 8:00 p.m.



## Queen Elizabeth's Secret Agents

Uncover the secret state that helped keep Queen Elizabeth I in power for more than 40 years, in the three-part series **Queen Elizabeth's Secret Agents**.

During a time when Britain was divided, unstable, and violent, the world's first secret service was born. William Cecil, Queen Elizabeth I's spy master, intercepts a conspiracy to assassinate the queen. When he learns that Elizabeth's own cousin, Mary Queen of Scots, is behind the plot, he lays a trap to capture and execute her.

In part two, Elizabeth's enemies grow in strength, but her spymaster Robert Cecil also fights an enemy within. An ambitious aristocrat is trying to take over his network. At stake is control over the aging queen and the power to choose the next King of England.

In the final episode, England has a new monarch, King James I, and Elizabeth's former spymaster Robert Cecil faces his toughest test. A group of religious extremists plans to blow up the Houses of Parliament with the king inside—what we call the Gunpowder Plot.

**Queen Elizabeth's Secret Agents** will be broadcast on 3-2 Sundays at 7:00 p.m. and 10:00 p.m. beginning the 28th. On 3-1, it can be seen Sundays at 9:00 p.m. beginning the 28th and Mondays at 7:00 a.m. and 2:00 p.m. beginning the 29th.



**Portrait of Queen Elizabeth I in a dress covered in eyes and ears which represents her spy network.**

## MASTERPIECE

### Victoria, Season 2

*A woman's place is on the throne.*

Jenna Coleman returns as the young queen, wife, and mother in all-new season of "Victoria" airing in seven episodes on **Masterpiece**. More than 16.2 million viewers tuned in for Victoria's premiere season, making it the highest-rated drama on PBS in 20 years—second only to *Downton Abbey*. Joining the cast in the new season is legendary actress Dame Diana Rigg (*Game of Thrones*, *The Avengers*), who plays the Duchess of Buccleuch, the court's new Mistress of the Robes—a fount of old-fashioned good sense for the queen, who is now in the throes of motherhood. Tom Hughes stars as the queen's smoldering consort, Prince Albert.

Season 2 finds Victoria adapting to motherhood after the birth of her first child, a daughter (to the disappointment of many). Meanwhile, the disaster of the Anglo-Afghan War unfolds abroad, and the catastrophic Irish potato famine begins to wreak havoc. In other foreign affairs, a royal state visit to France is in the offing.

Most intriguing to Prince Albert is the budding Industrial Revolution, which is now sweeping England. There is Charles Babbage's mechanical calculator and William Fothergill Cooke's miraculous electrical telegraph, not to mention Marc Isambard Brunel's daring Thames Tunnel. What an extraordinary time to be Queen!

"Victoria," Season 2, on **Masterpiece** airs on 3-2 Sundays at 8:00 p.m. beginning the 14th and Fridays at 11:00 p.m. on 19th and 10:00 p.m. on the 26th. On 3-1, the new series begins Sunday, the 14th at 7:00 p.m. and moves to 8:00 p.m. the next week. All episodes repeat Mondays at 1:00 p.m. and the the following Sunday at 6:00 p.m.



## Suffragettes Forever!

### The Story of Women and Power



In the provocative three-part series **Suffragettes Forever! The Story of Women and Power**, professor Amanda Vickery examines the lengthy struggle for women's rights in Britain. Putting the battle for the vote in its true historical context, Vickery shows how bloody revolutionary movements, working class radicals, lovestruck philosophers, campaigners in the sex industry, and even the humble bicycle all played a part in tackling social injustice.

The suffragette campaign was the inevitable conclusion of a fight that women—rich and poor—had been pursuing for hundreds of years against a system that gave men complete legal, political, and physical control over the other half of the population. A wife was considered the property of her husband. If he chose to, he could beat, rape, or even sell her to another man. It was the revolutionary politics of the late 18th century that opened the door to change, while at every step men furiously resisted giving women power.

Episode two describes the paradox for British women: a female queen who thought women's rights campaigners deserved a good whipping. Yet, during Victoria's reign, extraordinary women gradually changed the lives and opportunities of their gender, despite successive governments furiously resisting to give women the vote.

Vickery introduces the spurned mistress of a prime minister, who lost custody of her own children but won the first piece of modern feminist legislation—child custody rights for mothers. We meet a passionate campaigner who raised the age of consent and overthrew pernicious laws against prostitutes; a female Cambridge undergraduate who undermined the centuries-old prejudice that a Cambridge education was for men only; and, Mrs. Pankhurst and her daughters, who decided that after many years of women campaigning for the vote, it was now time to resort to deeds rather than words. The Edwardian suffragette movement became a quasi-terrorist organization and their campaign turned violent.

The program also brings to life the enemies of female suffrage: from the golfing prime minister Herbert Asquith—who had nightmares of being stripped naked by angry suffragettes—to the furious anti-suffrage societies and their mass meetings in the Royal Albert Hall. The political skullduggery to stop women from getting the vote served to increase the extremism of the suffragettes.

The backroom deal that finally allowed some women the vote, the abusive treatment of the first female Member of Parliament Lady Astor, and the misogynistic backlash of the 1920s are also discussed.

**Suffragettes Forever! The Story of Women and Power** airs on 3-2 Sundays at 6:00 p.m. beginning the 28th. On 3-1, it airs Mondays at 7:00 p.m. beginning the 29th and Tuesdays at 7:00 a.m. and 2:00 p.m. beginning the 30th.

## — EXODUS —



Refugees at the Austria-Hungary border

Since 2011, millions of people have fled their homes in Syria and other countries besieged by violence, helping to fuel Europe's largest migration crisis since the end of World War II. In January, **Frontline** presents "Exodus," the epic, first-hand stories of refugees and migrants as they make dangerous journeys across 26 countries seeking safety and a better life.

This two-hour special draws on camera and smartphone footage filmed by refugees and mi-

grants themselves, from inside a sinking dinghy on a route across the Mediterranean Sea where thousands have died, to the tents and fires inside Calais's notorious "Jungle" camp.

Through its harrowing intimacy, "Exodus" vividly exposes a shadow-world of human traffickers exploiting the crisis for profit, how countries are handling the influx of people, and the challenges and choices these refugees and migrants face every day.

"Anyone can become a refugee," says Hassan, a former English teacher who fled his home in Damascus, after he says he was beaten by government forces. "It's not something which you choose, it's something that happens to you." Hassan's journey is one of several at the heart of "Exodus."

We also meet Ahmad, who fled Syria when his village was invaded by Islamist extremists, and who is trying to reunite with his wife and young daughter. "I am a refugee, I am just like you, I have a family, I have dreams, I've got hopes..." says Ahmad. "I just want a peaceful life away from violence." Together, these stories and others paint an indelible portrait of this global crisis, and what it means to be a refugee.

"Exodus" on **Frontline** airs on 3-2 Tuesday, the 23rd at 8:00 p.m. and Thursday, the 25th at 7:00 p.m. On 3-1, it airs Friday, the 26th at 9:00 p.m.

*We'll Meet Again*

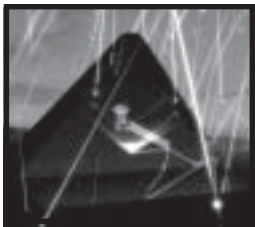
**We'll Meet Again with Ann Curry**, a new six-part series,

reveals the powerful bonds forged among people who now, against the odds, have the chance to reunite with someone who transformed their life.

The tides of history can disrupt lives, throwing strangers together or tearing loved ones apart. **We'll Meet Again** reveals moving stories of hope, courage, and love: from a Vietnam War baby desperate to find the American father she last saw 40 years ago to the military chaplain who helped a stranger through the trauma of 9/11 to civil rights workers whose lives were forever changed by the deep relationships they formed in the 1960s South.

**We'll Meet Again** begins with "Children of WWII," the story of Peter, who fled the Nazis with his parents in 1938. He searches for the family who befriended him in the last refuge open to the German Jews: the Shanghai Ghetto. Episode two follows with "Rescued from Mt. St. Helens."

**We'll Meet Again** airs on 3-2 Tuesdays at 7:00 p.m. beginning the 23rd and Sundays at 9:00 p.m. beginning the 28th. On 3-1, it airs Wednesdays at 7:00 p.m. beginning the 24th and Thursdays at 7:00 a.m. and 2:00 p.m. beginning the 25th.



Secrets  
of the Dead

Scanning the  
Pyramids

The only one of the seven wonders of the world still standing, the Great Pyramid of Khufu has fascinated people for centuries. Tracing the origin of the legends of secret chambers hidden in the heart of the pyramid, "Scanning the Pyramids"

on **Secrets of the Dead** shows what lies within by following the first scientific mission in 30 years to be authorized by the Egyptian government to examine the pyramids of Egypt. The result—the greatest discovery in Egypt's Khufu pyramid for more than 1,000 years, solving a 4,500-year-old mystery.

Passionate about ancient history, the global team of Scan Pyramids consists of particle physicists, experts in innovation and 3D technologies, and engineers in thermal imaging from Egypt, France, Japan, and Canada. For more than two years, they explored every corner of the pyramid, using non-invasive technologies. Their search detected unknown cavities in the Great Pyramid of Khufu for the first time since the Middle Ages.

Witness Scan Pyramid's adventures and successes in this extraordinary scientific and historical journey through time and space that led to this historic discovery.

"Scanning the Pyramids" on **Secrets of the Dead** will be broadcast on 3-2 Wednesday, the 24th at 9:00 p.m. and Sunday, the 28th at 10:00 a.m. On 3-1, it airs Saturday, the 27th at 11:00 p.m.

## Black Hole Apocalypse

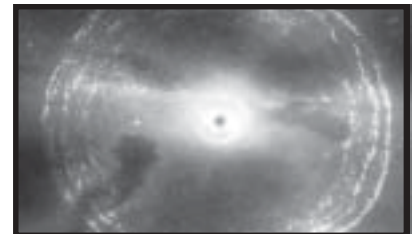
NOVA

They are the most enigmatic, mysterious, and exotic objects in the universe: black holes. They're also the most powerful; their gravity is so strong that nothing—not even light—can escape their pull. And they're the most destructive, swallowing particles, dust, gas, planets, even giant stars. Anything that falls into them vanishes... gone forever. But now, astrophysicists are coming to realize that black holes just might be an essential key to the structure of the universe—and to our very existence.

**Nova** journeys to the frontiers of black hole science in a new, one-night, two-hour special, "Black Hole Apocalypse." Viewers are taken to the weirdest places in the cosmos to explore the profound mysteries of these gravitational monsters. Where do they come from? What's inside them? What happens if you fall into one?

On September 14, 2015, after four decades of research and development, scientists have finally detected the existence of elusive, long-sought gravity waves, produced by the collision of two black holes some 1.3 billion years ago. This stunning result finally confirmed a prediction of Albert Einstein's 1915 General Theory of Relativity, even though Einstein himself doubted whether such extreme phenomena as gravity waves, created by the warping of space and time, could actually exist.

"Black Hole Apocalypse" on **Nova** airs on 3-2 Wednesday, the 10th at 8:00 p.m. and Saturday, the 13th at 10:00 p.m. On 3-1, it airs Thursday, the 11th at 3:00 p.m., Friday, the 12th at 8:00 p.m., and Saturday, the 13th at 11:00 p.m.



Two black holes merge.

Jennifer Brea was a Harvard PhD student when she was struck down by a mysterious fever that left her bedridden. As her illness progressed, she lost even the ability to sit in a wheelchair, yet her doctors insisted it was “all in her head.” Unable to convey the seriousness of her symptoms to her doctor, Jennifer began a video diary on her phone that eventually became the powerful documentary, “Unrest” on **Independent Lens**.

Once Jennifer was diagnosed with myalgic encephalomyelitis (ME), commonly known as chronic fatigue syndrome (CFS), she and her new husband were left to grapple with how to shape a future together in the face of a lifelong illness.

Refusing to accept the limitations of life in bed, Jennifer embarks on an online voyage around the world where she finds a hidden community of millions who have disappeared from their own lives, confined to their homes and bedrooms by ME. Using the internet, Skype, and Facebook, these disparate people connect with each other, finding a much-needed sanctuary of support and understanding.

As experts struggle to find out the causes of chronic fatigue syndrome, “Unrest” opens a window into what it’s like to live with this devastating disease.

“Unrest” on **Independent Lens** airs on 3-2 Monday, the 8th at 9:00 p.m. On 3-1, it can be seen Sunday, the 14th at 9:00 p.m.

**I AM NOT YOUR NEGRO**

In 1979, author James Baldwin wrote a letter to his literary agent describing his next project, to be called *Remember This House*. The book was to be a revolutionary, personal account of the lives and successive assassinations of three of his close friends—Medgar Evers, Malcolm X, and Martin Luther King, Jr. But at the time of Baldwin’s death in 1987, he left behind only 30 completed pages of his manuscript.

Filmmaker Raoul Peck envisions the book James Baldwin never finished in “I Am Not Your Negro” on **Independence Lens**, an incendiary film that is also one of the most acclaimed films of the year and a nominee for the Academy Award for Best Documentary.

“I Am Not Your Negro” is a radical, up-to-the-minute examination of race in America, using Baldwin’s original words, spoken by Samuel L. Jackson, and a flood of rich archival material.

The film connects the past of the Civil Rights movement to the present of #BlackLivesMatter. Ultimately, by confronting the deeper connections between the lives and assassination of these three leaders, Baldwin and Peck have produced a work that challenges the very definition of what America stands for.

“I Am Not Your Negro” on **Independent Lens** airs on 3-2 Monday, the 15th at 9:00 p.m. On 3-1, it airs Sunday, the 21st at 10:00 p.m.

**THE FORCE**

At a powder keg moment in American policing, “The Force” on **Independent Lens** presents a mesmerizing look deep inside the long-troubled Oakland Police Department as it struggles to confront federal demands for reform, a popular uprising following events in Ferguson, Missouri, and an explosive sex scandal.

Winner of the Documentary Directing Award at the 2017 Sundance Film Festival, “The Force” follows OPD’s efforts for two years to rebuild trust in one of America’s most violence-plagued cities. The film spotlights the new chief, hailed as a reformer, who is brought in to affect reform at the very moment the Black Lives Matter movement emerges to demand police accountability and racial justice both in Oakland and across the nation.

Despite growing public distrust, the OPD begins garnering national attention as a model of police reform. But just as the department is on the verge of a breakthrough, the man charged with turning the department around faces the greatest challenge of his career when a scandal breaks out about police officers having sex with a minor—threatening not only the progress that has been made, but the very authority of the institution itself.

“The Force” on **Independent Lens** airs on 3-2 Monday, the 22nd at 9:00 p.m. On 3-1, it can be seen Sunday, the 28th at 10:00 p.m.

**True North:  
The Sean Swarner**

**True North: The Sean Swarner** is a powerful documentary about the strength of the human spirit and one man’s determination to spread a message of hope to those touched by cancer.

**True North** follows adventurer and two-time cancer survivor Sean Swarner on his quest to reach the North Pole and become the world’s first cancer survivor to complete the Explorer’s Grand Slam—scaling the highest point on all seven continents and then hiking to the North and South Poles. Only a handful of people have ever done it, but no one against the overwhelming odds Sean faced.

**True North: The Sean Swarner** airs on 3-2 Sunday, the 7th at 10:00 a.m., Tuesday, the 9th at 10:00 p.m., and Thursday, the 11th at 7:00 p.m. On 3-1, it airs Monday, the 8th at 7:00 p.m. and Tuesday, the 9th at 7:00 a.m. and 2:00 p.m.

**Our Stories: VIETNAM**

A production of PBS station KRWG-TV in Las Cruces, **Our Stories: Vietnam** is a three-part series that focuses on the experiences of sixteen New Mexico veterans while serving in Vietnam.

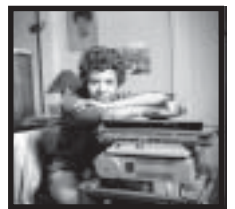
Part one tells the story of a painful and frightening night waiting for medics, valor that earned a purple heart, and questions of faith. Part two tells of a minesweeper’s worst fear, and the story of a New Mexico veteran who was one of the first pilots to land at Da Nang after Tonkin Bay.

The final stories introduce viewers to a Purple Heart recipient that didn’t leave anyone behind, and another veteran with two Purple Hearts—the “Luckiest Man Alive.”

**Our Stories: Vietnam** will be broadcast on 3-2 Sundays at 6:00 p.m. beginning the 7th. On 3-1, it airs Tuesdays at 9:00 p.m. beginning the 9th.

**American MASTERS  
Lorraine Hansberry**

Lorraine Hansberry’s “A Raisin in the Sun” (1959) changed the face of American theater by depicting the limitations of the American dream through the lives of a black family on Chicago’s South Side. The play’s unprecedented subject matter attracted record crowds and earned it the coveted top prize from the New York Drama Critics’ Circle.



**American Masters** examines Hansberry’s life and work in a two-hour special. The result is a timely and revealing portrait of an activist and artist whose popular recognition has, until now, remained long overdue.

“Lorraine Hansberry” on **American Masters** will be broadcast on 3-2 Friday, the 19th at 9:00 p.m. On 3-1, it airs Saturday, the 20th at 7:00 p.m.

# ◆ KENW-TV's DAYTIME SCHEDULES ◆

## Kids' Programming, How-to's, and Family Viewing

Channels 3-1 (HD), 3-2, 3-3, 3-4 (SD) require a digital television or a converter box, both with antennas in order to receive free over-the-air signals.

### Channel 3-2

#### Monday through Friday

5:00 am	Wai Lana Yoga
5:30 am	Body Electric
6:00 am	Classical Stretch
6:30 am	BBC World News
7:00 am	Sesame Street
7:30 am	Nature Cat
8:00 am	Dinosaur Train
8:30 am	Peg + Cat
9:00 am	Daniel Tiger's Neighborhood
9:30 am	Daniel Tiger's Neighborhood
10:00 am	Splash and Bubbles
10:30 am	Curious George
11:00 am	Pati's Mexican Table (M)
	Christopher Kimball's Milk Street (Tu)
	Fishing Behind the Lines (W)
	American Woodshop (Th)
	Bob the Builder (F)
11:30 am	Cook's Country (M)
	Knit and Crochet Now! (Tu)
	Woodsmith Shop (W)
	BBQ with Franklin (Th)
	Mister Rogers (F)
12:00 pm	Sit and Be Fit (MWF)
	Creative Living (TuTh)
12:30 pm	Beads, Baubles and Jewels (M)
	Sew It All (Tu)
	Fons & Porter Love of Quilting (W)
	Welcome to My Studio (Th)
	Beauty of Oil Painting (F)
1:00 pm	Curious George
1:30 pm	Ready, Jet, Go!
2:00 pm	Nature Cat
2:30 pm	Wild Kratts
3:00 pm	Arthur
3:30 pm	Odd Squad
4:00 pm	Odd Squad (M-Th)
	Biz Kid\$ (F)
4:30 pm	BBC World News America
5:00 pm	Washington Week (M)
	Scully/The World Show (Tu)
	Well Read (W)
	Focus on Europe (Th)
	BBC Newsnight (F)
5:30 pm	Nightly Business Report
6:00 pm	PBS NewsHour

### Channel 3-3

#### Monday through Friday

5:00 am	Ready, Jet, Go!
5:30 am	Cat in the Hat
6:00 am	Nature Cat
6:30 am	Curious George
7:00 am	Curious George
7:30 am	Daniel Tiger's Neighborhood
8:00 am	Daniel Tiger's Neighborhood
8:30 am	Splash and Bubbles
9:00 am	Sesame Street
9:30 am	Super Why!
10:00 am	Dinosaur Train
10:30 am	Peg + Cat
11:00 am	Sesame Street
11:30 am	Splash and Bubbles
12:00 pm	Curious George
12:30 pm	Nature Cat
1:00 pm	Nature Cat
1:30 pm	Wild Kratts
2:00 pm	Wild Kratts
2:30 pm	Odd Squad
3:00 pm	Odd Squad
3:30 pm	Arthur
4:00 pm	Arthur
4:30 pm	Ready, Jet, Go!
5:00 pm	Sesame Street
5:30 pm	Nature Cat
6:00 pm	Wild Kratts
6:30 pm	Wild Kratts
7:00 pm	Odd Squad
7:30 pm	Odd Squad
8:00 pm	Arthur
8:30 pm	Arthur

#### Saturday

5:00 am	Bob the Builder
5:30 am/6:00 am	Daniel Tiger's Neighborhood
6:30 am	Splash and Bubbles
7:00 am	Curious George
7:30 am	Nature Cat
8:00 am	Ready, Jet, Go!
8:30 am	Wild Kratts
9:00 am	Odd Squad
9:30 am	Arthur
10:00 am	Cyberchase
10:30 am	Cat in the Hat
11:00 am	Mister Rogers
11:30 am	Twice as Good
12:00 pm	Hands on Crafts for Kids
12:30 pm	Super Why!
1:00 pm	Curious George
1:30 pm	Nature Cat
2:00 pm	Ready, Jet, Go!
2:30 pm	Wild Kratts
3:00 pm	Dinosaur Train
3:30 pm	Bob the Builder
4:00 pm/4:30 pm	Daniel Tiger's Neighborhood
5:00 pm	Biz Kid\$
5:30 pm	Sesame Street
6:00 pm	Nature Cat
6:30 pm	Ready, Jet, Go!
7:00 pm	Wild Kratts
7:30 pm	Odd Squad
8:00 pm	Arthur
8:30 pm	Cyberchase

#### Sunday

5:00 am	Sesame Street
5:30 am/6:00 am	Daniel Tiger's Neighborhood
6:30 am	Splash and Bubbles
7:00 am	Curious George
7:30 am	Nature Cat
8:00 am	Ready, Jet, Go!
8:30 am	Wild Kratts
9:00 am	Odd Squad
9:30 am	Arthur
10:00 am	Cyberchase
10:30 am	Sesame Street
11:00 am	Mixed Nutz
11:30 am	Cat in the Hat
12:00 pm	Sid the Science Kid
12:30 pm	Super Why!
1:00 pm	Dinosaur Train
1:30 pm/2:00 pm	Daniel Tiger's Neighborhood
2:30 pm	Splash and Bubbles
3:00 pm	Curious George
3:30 pm	Nature Cat
4:00 pm	Ready, Jet, Go!
4:30 pm	Thomas Edison's Secret Lab
5:00 pm	Curiosity Quest
5:30 pm	Sesame Street
6:00 pm	Daniel Tiger's Neighborhood
6:30 pm	Splash and Bubbles
7:00 pm	Wild Kratts
7:30 pm	Odd Squad
8:00 pm	Arthur
8:30 pm	Cyberchase



### Channel 3-1

#### Saturday

5:00 am	Mister Rogers
5:30 am	Dinosaur Train
6:00 am	Bob the Builder
6:30 am	Daniel Tiger's Neighborhood
7:00 am	Daniel Tiger's Neighborhood
7:30 am	Splash and Bubbles
8:00 am	Curious George
8:30 am	Nature Cat
9:00 am	Ready, Jet, Go!
9:30 am	Wild Kratts
10:00 am	Odd Squad
10:30 am	Arthur

#### Sunday

5:00 am	Sid the Science Kid
5:30 am	Dinosaur Train
6:00 am	Sesame Street
6:30 am	Daniel Tiger's Neighborhood
7:00 am	Daniel Tiger's Neighborhood
7:30 am	Splash and Bubbles
8:00 am	Curious George
8:30 am	Nature Cat
9:00 am	Ready, Jet, Go!
9:30 am	Wild Kratts
10:00 am	Odd Squad
10:30 am	Biz Kid\$



# KENW TV SCHEDULES 3-1 (HD), 3-2 (SD) AND 3-3 (SD)

Our regular KENW-TV Channel (3-2) is listed below in bold. It can be seen by those who use cable or one of our analog translators listed on page 3. Schedule 3-1 is our High Definition (HD) Channel, 3-3 is our Children's/Encore Standard Definition Channel (SD), and 3-4 is our FNX Channel (First Nation Experience). Those with either digital TV sets or analog sets with converter boxes (both require antennas) can receive all four channels in most parts of our viewing area. KENW-TV has digital transmitters in the following cities: Clovis/Portales; Hobbs/Lovington; Roswell; Artesia; Fort Sumner; Tucumcari; Carlsbad; Ruidoso; Mescalero.

**KENW-TV's 3-1 schedule (below in italics) is carried by DirecTV in most counties of New Mexico.**

**KENW-TV's 3-2 schedule (below in bold) is carried on Dish network in most counties of New Mexico.**

## Monday 1st

5:00 3-1 *Classical Stretch*  
 5:30 3-1 *Wai Lana Yoga*  
 6:00 3-1 *Nature "Story of Cats: Americas"*  
 7:00 3-1 *All-Star Orchestra*  
 8:00 3-1 *Rick Steves' Europe*  
 8:30 3-1 *My Greek Table*  
 9:00 3-1 *Pati's Mexican Table*  
 9:30 3-1 *New Orleans Cooking*  
 10:00 3-1 *P. Allen Smith's Garden Home*  
 10:30 3-1 *Jazzy Vegetarian*  
 11:00 3-1 *Classical Stretch*  
 11:30 3-1 *Sit and Be Fit*  
 12:00 3-1 *Great British Baking Show*  
 1:00 3-1 *Masterpiece "Victoria"*  
 2:00 3-1 *Eric Idle's The Entire Universe*  
 3:00 3-1 *Roadtrip Nation*  
 4:00 3-1 *America's Heartland*  
 4:30 3-1 *Daytripper*  
 5:00 3-1 *Amanpour on PBS*  
 5:30 3-1 *Nightly Business Report*  
 6:00 3-1 *PBS NewsHour*  
**7:00 3-2 Antiques Roadshow "Knoxville"**  
 3-1 *New Mexico Masterpieces*  
**8:00 3-2 Great Performances "From Vienna: The New Year's Celebration"**  
 3-1 *Antiques Roadshow*  
 9:00 3-3 *Great British Baking Show*  
**9:30 3-2 Independent Lens**  
 "Untold Tales of Armistead Maupin"  
 3-1 *Great Performances "From Vienna"*  
 10:00 3-3 *Masterpiece "Victoria," Pt. 7*  
 10:30 3-1 *Nightly Business Report*  
**11:00 3-2 Antiques Roadshow "Knoxville"**  
 3-1 *PBS NewsHour*  
 3-3 *Great Performances "From Vienna"*  
**12:00 3-2 PBS NewsHour**  
 3-1 *Independent Lens "Armistead Maupin"*

## Tuesday 2nd

5:00 3-1 *Classical Stretch*  
 5:30 3-1 *Wai Lana Yoga*  
 6:00 3-1 *Antiques Roadshow*  
 7:00 3-1 *Great Performances "From Vienna"*  
 8:30 3-1 *Oh, My Aching Back!*  
 9:00 3-1 *Healthy Body Healthy Mind*  
 9:30 3-1 *Second Opinion*  
 10:00 3-1 *Closer to Truth*  
 10:30 3-1 *Age Wise*  
 11:00 3-1 *Classical Stretch*  
 11:30 3-1 *Wai Lana Yoga*  
 12:00 3-1 *Jacques Pepin: Heart & Soul*  
 12:30 3-1 *Taste of History*  
 1:00 3-1 *Antiques Roadshow*  
 2:00 3-1 *New Mexico Masterpieces*  
 3:00 3-1 *When I'm 65*  
 4:00 3-1 *Consuelo Mack WealthTrack*  
 4:30 3-1 *Start Up*  
 5:00 3-1 *Amanpour on PBS*  
 5:30 3-1 *Nightly Business Report*  
 6:00 3-1 *PBS NewsHour*  
**7:00 3-2 Finding Your Roots "Unfamiliar Kin"**  
 3-1 *American Experience "Influenza 1918"*

8:00 **3-2 American Experience "Influenza 1918"**  
 3-1 *Saving the Great Swamp: Battle to Defeat the Jetport*  
**9:00 3-2 Death of the Old West**  
 3-1 *Between Earth and Sky: Climate Change*  
 3-3 *Antiques Roadshow*  
**9:30 3-2 Creative Living**  
**10:00 3-2 Frontline "Abacus: Small Enough to Jail"**  
 3-1 *Amanpour on PBS*  
 3-3 *History Detectives*  
 10:30 3-1 *Nightly Business Report*  
 11:00 3-1 *PBS NewsHour*  
 3-3 *Globe Trekker*  
**11:30 3-2 Amanpour on PBS**  
**12:00 3-2 PBS NewsHour**  
 3-1 *Frontline "Abacus: Small Enough to Jail"*

## Wednesday 3rd

5:00 3-1 *Classical Stretch*  
 5:30 3-1 *Wai Lana Yoga*  
 6:00 3-1 *Consuelo Mack WealthTrack*  
 6:30 3-1 *David Rubenstein Show*  
 7:00 3-1 *Rudy Maxa's World*  
 7:30 3-1 *Crossing South*  
 8:00 3-1 *Saving the Great Swamp*  
 9:00 3-1 *Craftsman's Legacy*  
 9:30 3-1 *Rough Cut*  
 10:00 3-1 *American Woodshop*  
 10:30 3-1 *Woodwright's Shop*  
 11:00 3-1 *Classical Stretch*  
 11:30 3-1 *Sit and Be Fit*  
 12:00 3-1 *Sara's Weeknight Meals*  
 12:30 3-1 *Cook's Country*  
 1:00 3-1 *Family Ingredients*  
 1:30 3-1 *Crossing South*  
 2:00 3-1 *American Experience "Influenza 1918"*  
 3:00 3-1 *Music Voyager*  
 3:30 3-1 *Mind of a Chef*

4:00 3-1 *Lidia's Kitchen*  
 4:30 3-1 *America's Test Kitchen*  
 5:00 3-1 *Amanpour on PBS*  
 5:30 3-1 *Nightly Business Report*  
 6:00 3-1 *PBS NewsHour*  
**7:00 3-2 Nature "Snow Monkeys"**  
 3-1 *Finding Your Roots*  
**8:00 3-2 Nova "Invisible Universe Revealed"**  
 3-1 *Defending the Fire*  
**9:00 3-2 Right to Risk: A 15 Day Journey through Arizona's Grand Canyon**  
 3-1 *Nature "Snow Monkeys"*  
 3-3 *Mind of a Chef*  
 9:30 3-3 *Family Ingredients*  
**10:00 3-2 Second Opinion "Eating Disorders"**  
 3-1 *Amanpour on PBS*  
 3-3 *Martha Stewart's Cooking School*  
**10:30 3-2 This Old House "Half Way"**  
 3-1 *Nightly Business Report*  
 3-3 *Martha Bakes*  
**11:00 3-2 Amanpour on PBS**  
 3-1 *PBS NewsHour*  
**11:30 3-2 TBA**  
 3-3 *Start Up*  
**12:00 3-2 PBS NewsHour**  
 3-1 *Nova "Invisible Universe Revealed"*

## Thursday 4th

5:00 3-1 *Classical Stretch*  
 5:30 3-1 *Wai Lana Yoga*  
 6:00 3-1 *IQ: Smartparent*  
 6:30 3-1 *Family Travel with Colleen Kelly*  
 7:00 3-1 *Finding Your Roots*  
 8:00 3-1 *Antiques Roadshow*  
 9:00 3-1 *Fons & Porter's Love of Quilting*  
 9:30 3-1 *Quilt in a Day*  
 10:00 3-1 *Knit and Crochet Now!*  
 10:30 3-1 *Sew it All*

## KENW-TV on Cable Companies

KENW-TV's 3-1 (High Definition, HD) and 3-2 (Standard Definition, SD) program schedules can be seen on the following cable companies:

Alpine, TX: Channel 12 (SD) and Channel 712 (HD), TDS  
 Dexter: Channel 3 (SD) and Channel 470 (HD), Cable One  
 Ft. Stanton, TX: Channel 6 (SD) and Channel 706 (HD), TDS  
 Hobbs: Channel 3 (SD) and Channel 703 (HD), TDS  
 Portales: Channel 3 (SD), and Channel 510 (HD), Comcast Cable  
 Roswell: Channel 3 (SD), and Channel 470 (HD), Cable One

KENW-TV's 3-2 Schedule (Standard Definition, SD) can be seen on the following cable companies:

Hagerman: Channel 3, PVT  
 Jal: Channel 3, TDS  
 Lea County: Channel 3, TDS  
 Loving: Channel 3, TDS  
 Lovington: Channel 3, TDS  
 Melrose: Channel 9, Reach Broadband  
 Muleshoe, TX: Channel 5, Reach Broadband  
 Texico: Channel 3, Suddenlink  
 Tucumcari: Channel 11, Comcast

11:00 3-1 *Classical Stretch*  
 11:30 3-1 *Wai Lana Yoga*  
 12:00 3-1 *Christopher Kimball's Milk Street*  
 12:30 3-1 *Chef's Life*  
 1:00 3-1 *Ellie's Real Good Food*  
 1:30 3-1 *Moveable Feast with Fine Cooking*  
 2:00 3-1 *Finding Your Roots*  
 3:00 3-1 *Science Goes to the Movies*  
 3:30 3-1 *Beyond Geek*  
 4:00 3-1 *Nova "Invisible Universe Revealed"*  
 5:00 3-1 *Amanpour on PBS*  
 5:30 3-1 *Nightly Business Report*  
 6:00 3-1 *PBS NewsHour*  
 7:00 3-2 **Frontline** "Abacus: Small Enough to Jail"  
 3-1 *Song of the Mountains*  
 8:00 3-1 *Red Green Show*  
 8:30 3-2 **Bluegrass Underground** "Parker Millsap"  
 3-1 *Cobblestone Corridor*  
 9:00 3-2 **Today's Wild West** "Ghost Train/Hansen/Jesse James"  
 3-1 *Creative Living*  
 3-3 *Roadtrip Nation*  
 9:30 3-2 **Red Green Show** "Rules of Engagement"  
 3-1 *Elder Abuse and Exploitation*  
 10:00 3-2 **Music City Roots Live from the Factory**  
 3-1 *Amanpour on PBS*  
 3-3 *Nature*  
 10:30 3-1 *Nightly Business Report*  
 11:00 3-2 **Amanpour on PBS**  
 3-1 *PBS NewsHour*  
 3-3 *Nova*  
 11:30 3-2 **TBA**  
 12:00 3-2 **PBS NewsHour**  
 3-1 *American Experience "Influenza 1918"*

### Friday 5th

5:00 3-1 *Classical Stretch*  
 5:30 3-1 *Wai Lana Yoga*  
 6:00 3-1 *America's Heartland*  
 6:30 3-1 *Garden Smart*  
 7:00 3-1 *Song of the Mountains*  
 8:00 3-1 *Bluegrass Underground*  
 8:30 3-1 *Music Voyager*  
 9:00 3-1 *Globe Trekker*  
 10:00 3-1 *Joy of Painting*  
 10:30 3-1 *Beauty of Oil Painting*  
 11:00 3-1 *Classical Stretch*  
 11:30 3-1 *Sit and Be Fit*  
 12:00 3-1 *This Old House Hour*  
 1:00 3-1 *Make It Artsy*  
 1:30 3-1 *Welcome to My Studio*  
 2:00 3-1 *Woodsongs*  
 3:00 3-1 *Globe Trekker*  
 4:00 3-1 *Healthy Body Healthy Mind*  
 4:30 3-1 *Asian American Life*  
 5:00 3-1 *Amanpour on PBS*  
 5:30 3-1 *Nightly Business Report*  
 6:00 3-1 *PBS NewsHour*  
 7:00 3-2 **Market to Market**  
 3-1 *Washington Week*  
 7:30 3-2 **Consuelo Mack WealthTrack**  
 3-1 *TBA*  
 8:00 3-2 **Washington Week**  
 3-1 *Nova "Invisible Universe Revealed"*  
 8:30 3-2 **BBC Newsnight**  
 9:00 3-2 **Great Performances** "Tony Bennett & Lady Gaga: Cheek to Cheek Live!"  
 3-1 *Frontline "Abacus: Small Enough to Jail"*  
 3-3 *This Old House Hour*  
 10:00 3-2 **Alan Cumming Sings Sappy Songs**  
 3-3 *Woodwright's Shop*  
 10:30 3-1 *Nightly Business Report*  
 3-3 *Craftsman's Legacy*

11:00 3-2 **Right to Risk: A 15 Day Journey through Arizona's Grand Canyon**  
 3-1 *PBS NewsHour*  
 3-3 *American Woodshop*  
 11:30 3-3 *Joy of Painting*  
 12:00 3-2 **PBS NewsHour**  
 3-1 *Great Performances*

### Saturday 6th

6:00 3-2 **Woodsmith Shop** "Wrap-Up"  
 6:30 3-2 **American Woodshop** "Scrolled Shelf"  
 7:00 3-2 **BBQ with Franklin** "Poultry & Spice"  
 7:30 3-2 **America's Test Kitchen** "Steak and Veggies"  
 8:00 3-2 **Cook's Country** "Surf and Turf"  
 8:30 3-2 **Great British Baking Show** "Biscuits"  
 9:30 3-2 **Motorweek**  
 10:00 3-2 **P. Allen Smith's Garden Home** "Mighty Micros"  
 10:30 3-2 **Taste of History** "George Washington's Whiskey"  
 11:00 3-2 **Paint This with Jerry Yarnell** "Triple Mischievous," Pt. 3  
 3-1 *Julia Child-Cooking with Master Chefs*  
 11:30 3-2 **Joy of Painting** "Storm's a Comin"  
 3-1 *Ask This Old House*  
 12:00 3-2 **Beauty of Oil Painting** "Mauve Magic"  
 3-1 *This Old House*  
 12:30 3-2 **Quilt in a Day** "Quatrefoil & Cups and Saucers"  
 3-1 *This Old House*  
 1:00 3-2 **Fresh Quilting** "Impeccable Piecing"  
 3-1 *Ask This Old House*  
 1:30 3-2 **Fons & Porter's Love of Quilting** "Cabins of Carolina"  
 3-1 *Motorweek*  
 2:00 3-2 **Creative Living**  
 3-1 *Woodwright's Shop*  
 2:30 3-2 **Jazzy Vegetarian** "Summer Soiree"  
 3-1 *Chef's Life*  
 3:00 3-2 **Knitting Daily** "Accessorize It!"  
 3-1 *Martha Stewart's Cooking School*  
 3:30 3-2 **This Old House** "Duct Dynasty"  
 3-1 *Martha Bakes*  
 4:00 3-2 **Ask This Old House** "Walkway Reset, Patch Chipped Floor"  
 3-1 *Globe Trekker*  
 4:30 3-2 **Welcome to My Studio** "Beauty of the Mass Tone"  
 5:00 3-2 **Sewing with Nancy** "10-20-30 Minutes to Recycle Jeans"  
 3-1 *PBS NewsHour Weekend*  
 5:30 3-2 **It's Sew Easy** "All That Jazz - The 1920s"  
 3-1 *Report from Santa Fe*  
 6:00 3-2 **Report from Santa Fe**  
 3-1 *Antiques Roadshow*  
 6:30 3-2 **America's Heartland**  
 7:00 3-2 **Lawrence Welk Show** "Broadway Musicals (1971)"  
 3-1 *Great Performances "Bennett/Gaga"*  
 8:00 3-2 **Fall and Rise of Reginald Perrin, Pt. 1**  
 3-1 *Alan Cumming Sings Sappy Songs*  
 8:30 3-2 **Red Green Show** "Rules of Engagement"  
 9:00 3-2 **Austin City Limits** "Father John Misty/The Black Angels"  
 3-1 *Speakeasy*  
 3-3 *Lawrence Welk Show*  
 10:00 3-2 **Nova** "Invisible Universe Revealed"  
 3-1 *Austin City Limits*  
 3-3 *Classic Gospel*  
 11:00 3-2 **Nature** "Snow Monkeys"  
 3-1 *Nova "Invisible Universe Revealed"*  
 3-3 *Bluegrass Underground*  
 11:30 3-3 *Sun Studio Sessions*  
 12:00 3-2 **Austin City Limits** "Father John Misty/The Black Angels"  
 3-1 *Nature "Snow Monkeys"*

### Sunday 7th

6:00 3-2 **Painting and Travel** "Apple Time"  
 6:30 3-2 **Second Opinion** "OCD"  
 7:00 3-2 **Antiques Roadshow** "Knoxville"  
 8:00 3-2 **Classic Gospel** "I'll Meet You on the Mountain"  
 9:00 3-2 **Joy of Music** "Musical Journey of So. Germany," Pt. 3  
 9:30 3-2 **Music and the Spoken Word**  
 10:00 3-2 **True North: The Sean Swarner Story**  
 11:00 3-2 **Globe Trekker** "North East England"  
 3-1 *Washington Week*  
 11:30 3-1 *To the Contrary with Bonnie Erbe*  
 12:00 3-2 **New Mexico True TV** "Las Cruces and Organ Mountains"  
 3-1 *Today's Wild West, Pt. 1*  
 12:30 3-2 **In Focus New Mexico**  
 3-1 *Start Up*  
 1:00 3-1 *Scully/The World Show*  
 1:30 3-2 **Travel Detective** "Hidden Gems of Sydney"  
 3-1 *Market to Market*  
 2:00 3-2 **Closer to Truth** "What is Philosophy of Science"  
 3-1 *Garden Smart*  
 2:30 3-2 **Well Read** "Garth Stein & Mary Ann Gwinn: Writers to Reviewers"  
 3-1 *Mind of a Chef*  
 3:00 3-2 **Second Opinion** "Psoriasis"  
 3-1 *Great British Baking Show*  
 3:30 3-2 **Healthy Minds** "Youth and Mental Wellness: Lady Gaga's Born This Way"  
 4:00 3-2 **Classic Gospel** "CCM United: We Will Stand"  
 3-1 *Nova "Invisible Universe Revealed"*  
 5:00 3-2 **PBS NewsHour Weekend**  
 3-1 *Well Read*  
 5:30 3-2 **Washington Week**  
 3-1 *Rise and Fall of Reginald Perrin, Pt. 1*  
 6:00 3-2 **Our Stories: Vietnam, Pt. 1**  
 3-1 *Masterpiece "Victoria"*  
 7:00 3-2 **Masterpiece** "Victoria: The Queen's Husband," Pt. 8  
 3-1 *Masterpiece "Victoria"*  
 8:00 3-2 **Masterpiece** "Victoria: Engine of Change," Pt. 9  
 3-1 *Masterpiece "Victoria"*  
 9:00 3-2 **Masterpiece** "Victoria: Young England," Pt. 10  
 3-1 *Independent Lens "The Untold Story of Armistead Maupin"*  
 3-3 *Tracks Ahead*  
 9:30 3-3 *America's Heartland*  
 10:00 3-2 **Great Performances** "Tony Bennett & Lady Gaga: Cheek to Cheek"  
 3-3 *This Old House*  
 10:30 3-1 *Bluegrass Underground*  
 3-3 *Ask This Old House*  
 11:00 3-2 **Alan Cumming Sings Sappy Songs**  
 3-1 *Austin City Limits*  
 3-3 *Motorweek*  
 11:30 3-3 *Woodwright's Shop*  
 12:00 3-2 **Nova** "Invisible Universe Revealed"  
 3-1 *Masterpiece "Victoria," Pt. 8*

### Monday 8th

5:00 3-1 *Classical Stretch*  
 5:30 3-1 *Wai Lana Yoga*  
 6:00 3-1 *Nature "Snow Monkeys"*  
 7:00 3-1 *All-Star Orchestra*  
 8:00 3-1 *Rick Steves" Europe*  
 8:30 3-1 *My Greek Table with Diane Kochila*  
 9:00 3-1 *Pati's Mexican Table*  
 9:30 3-1 *New Orleans Cooking*  
 10:00 3-1 *P. Allen Smith's Garden Home*  
 10:30 3-1 *Jazzy Vegetarian*  
 11:00 3-1 *Classical Stretch*  
 11:30 3-1 *Sit and Be Fit*

12:00 3-1 *Great British Baking Show*  
 1:00 3-1 *Masterpiece "Victoria," Pt. 8*  
 2:00 3-1 *Masterpiece "Victoria," Pt. 9*  
 3:00 3-1 *Masterpiece "Victoria," Pt. 10*  
 4:00 3-1 *America's Heartland*  
 4:30 3-1 *Daytripper*  
 5:00 3-1 *Amanpour on PBS*  
 5:30 3-1 *Nightly Business Report*  
 6:00 3-1 *PBS NewsHour*  
 7:00 3-2 **Antiques Roadshow** "Harrisburg"  
 3-1 *True North: The Sean Swarner Story*  
 8:00 3-2 **Antiques Roadshow** "Knoxville"  
 3-1 *Antiques Roadshow*  
 9:00 3-2 **Independent Lens** "Unrest"  
 3-1 *Storm of the Century: Blizzard of '49*  
 3-3 *Great British Baking Show*  
 10:00 3-1 *Amanpour on PBS*  
 3-3 *Masterpiece "Victoria," Pt. 8*  
 10:30 3-2 **Travel Detective** "Hidden Gems of Sydney"  
 3-1 *Nightly Business Report*  
 11:00 3-2 **Antiques Roadshow** "Harrisburg"  
 3-1 *PBS NewsHour*  
 3-3 *Masterpiece "Victoria," Pt. 9*  
 12:00 3-2 **PBS NewsHour**  
 3-1 *Independent Lens "Unrest"*  
 3-3 *Masterpiece "Victoria," P. 10*

### Tuesday 9th

5:00 3-1 *Classical Stretch*  
 5:30 3-1 *Wai Lana Yoga*  
 6:00 3-1 *Antiques Roadshow*  
 7:00 3-1 *True North: The Sean Swarner Story*  
 8:00 3-1 *Selling Sunshine: The Florida Trains*  
 9:00 3-1 *Healthy Body Healthy Mind*  
 9:30 3-1 *Second Opinion*  
 10:00 3-1 *Closer to Truth*  
 10:30 3-1 *Grey Ambition*  
 11:00 3-1 *Classical Stretch*  
 11:30 3-1 *Wai Lana Yoga*  
 12:00 3-1 *Jacques Pepin: Heart & Soul*  
 12:30 3-1 *Taste of History*  
 1:00 3-1 *Antiques Roadshow*  
 2:00 3-1 *True North: The Sean Swarner Story*  
 3:00 3-1 *Selling Sunshine: The Florida Trains*  
 4:00 3-1 *Consuelo Mack WealthTrack*  
 4:30 3-1 *Start Up*  
 5:00 3-1 *Amanpour on PBS*  
 5:30 3-1 *Nightly Business Report*  
 6:00 3-1 *PBS NewsHour*  
 7:00 3-2 **Finding Your Roots**  
 "Puritans & Pioneers"  
 3-1 *American Experience "Into the Amazon"*  
 8:00 3-2 **American Experience**  
 "Into the Amazon"  
 9:00 3-1 *Our Stories: Vietnam, Pt. 1*  
 3-3 *Antiques Roadshow*  
 10:00 3-2 **True North: The Sean Swarner Story**  
 3-1 *Amanpour on PBS*  
 3-3 *History Detectives*  
 10:30 3-1 *Nightly Business Report*  
 11:00 3-2 **Amanpour on PBS**  
 3-1 *PBS NewsHour*  
 3-3 *Globe Trekker*  
 11:30 3-2 **TBA**  
 12:00 3-2 **PBS NewsHour**  
 3-1 *After Ebola: Preparing for a Pandemic*

### Wednesday 10th

5:00 3-1 *Classical Stretch*  
 5:30 3-1 *Wai Lana Yoga*  
 6:00 3-1 *Consuelo Mack WealthTrack*  
 6:30 3-1 *David Rubenstein Show*  
 7:00 3-1 *Samantha Brown's Places to Love*  
 7:30 3-1 *Crossing South*  
 8:00 3-1 *88 Days in the Mother Lode: Mark Twain Finds His Voice*

9:00 3-1 *Craftsman's Legacy*  
 9:30 3-1 *Rough Cut*  
 10:00 3-1 *American Woodshop*  
 10:30 3-1 *Woodwright's Shop*  
 11:00 3-1 *Classical Stretch*  
 11:30 3-1 *Sit and Be Fit*  
 12:00 3-1 *Sara's Weeknight Meals*  
 12:30 3-1 *Cook's Country*  
 1:00 3-1 *Family Ingredients*  
 1:30 3-1 *Crossing South*  
 2:00 3-1 *American Experience "Into the Amazon"*  
 4:00 3-1 *Lidia's Kitchen*  
 4:30 3-1 *America's Test Kitchen*  
 5:00 3-1 *Amanpour on PBS*  
 5:30 3-1 *Nightly Business Report*  
 6:00 3-1 *PBS NewsHour*  
 7:00 3-2 **Nature** "Yosemite"  
 3-1 *Finding Your Roots*  
 8:00 3-2 **Nova** "Black Hole Apocalypse"  
 3-1 *Migrant Kitchen*  
 9:00 3-1 *Nature "Yosemite"*  
 3-3 *Mind of a Chef*  
 9:30 3-3 *Family Ingredients*  
 10:00 3-2 **Second Opinion** "Psoriasis"  
 3-1 *Amanpour on PBS*  
 3-3 *Martha Stewart's Cooking School*  
 10:30 3-2 **This Old House** "Duct Dynasty"  
 3-1 *Nightly Business Report*  
 3-3 *Martha Bakes*  
 11:00 3-2 **Amanpour on PBS**  
 3-1 *PBS NewsHour*  
 3-3 *Start Up*  
 11:30 3-2 **TBA**  
 3-3 *Samantha Brown's Places to Love*  
 12:00 3-2 **PBS NewsHour**  
 3-1 *Nova "Black Hole Apocalypse"*

### Thursday 11th

5:00 3-1 *Classical Stretch*  
 5:30 3-1 *Wai Lana Yoga*  
 6:00 3-1 *IQ: Smartparent*  
 6:30 3-1 *Family Travel with Colleen Kelly*  
 7:00 3-1 *Finding Your Roots*  
 8:00 3-1 *Antiques Roadshow*  
 9:00 3-1 *Fons & Porters Love of Quilting*  
 9:30 3-1 *Quilt in a Day*  
 10:00 3-1 *Knit and Crochet Now!*  
 10:30 3-1 *Sew it All*  
 11:00 3-1 *Classical Stretch*  
 11:30 3-1 *Wai Lana Yoga*  
 12:00 3-1 *Christopher Kimball's Milk Street*  
 12:30 3-1 *Chef's Life*  
 1:00 3-1 *Ellie's Real Good Food*  
 1:30 3-1 *Moveable Feast with Fine Cooking*  
 2:00 3-1 *Finding Your Roots*  
 3:00 3-1 *Nova "Black Hole Apocalypse"*  
 5:00 3-1 *Amanpour on PBS*  
 5:30 3-1 *Nightly Business Report*  
 6:00 3-1 *PBS NewsHour*  
 7:00 3-2 **True North: The Sean Swarner Story**  
 3-1 *Song of the Mountains*  
 8:00 3-2 **Song of the Mountains**  
 "Tribute & Memorial to Miss Dixie Hall"  
 3-1 *Red Green Show*  
 8:30 3-1 *Becoming Albertan*  
 9:00 3-2 **Today's Wild West**  
 "Chief Joseph Trail Ride"  
 3-1 *Creative Living*  
 3-3 *Roadtrip Nation*  
 9:30 3-2 **Red Green Show** "Folk Art"  
 3-1 *Georgia O'Keeffe: A Woman on Paper*  
 3-3 *Science Goes to the Movies*  
 10:00 3-2 **Music City Roots Live From the Factory**  
 3-1 *Amanpour on PBS*  
 3-3 *Nature*  
 10:30 3-1 *Nightly Business Report*

11:00 3-2 **Amanpour on PBS**  
 3-1 *PBS NewsHour*  
 3-3 *Nova*  
 11:30 3-2 **TBA**  
 12:00 3-2 **PBS NewsHour**  
 3-1 *American Experience "Into the Amazon"*

### Friday 12th

5:00 3-1 *Classical Stretch*  
 5:30 3-1 *Wai Lana Yoga*  
 6:00 3-1 *America's Heartland*  
 6:30 3-1 *Garden Smart*  
 7:00 3-1 *Song of the Mountains*  
 8:00 3-1 *Bluegrass Underground*  
 8:30 3-1 *Music Voyager*  
 9:00 3-1 *Globe Trekker*  
 10:00 3-1 *Joy of Painting*  
 10:30 3-1 *Beauty of Oil Painting*  
 11:00 3-1 *Classical Stretch*  
 11:30 3-1 *Sit and Be Fit*  
 12:00 3-1 *This Old House Hour*  
 1:00 3-1 *Make It Artsy*  
 1:30 3-1 *Welcome to My Studio*  
 2:00 3-1 *Woodsongs*  
 3:00 3-1 *Globe Trekker*  
 4:00 3-1 *Healthy Body Healthy Mind*  
 4:30 3-1 *Asian American Life*  
 5:00 3-1 *Amanpour on PBS*  
 5:30 3-1 *Nightly Business Report*  
 6:00 3-1 *PBS NewsHour*  
 7:00 3-2 **Market to Market**  
 3-1 *Washington Week*  
 7:30 3-2 **Consuelo Mack WealthTrack**  
 3-1 *TBA*  
 8:00 3-2 **Washington Week**  
 3-1 *Nova "Black Hole Apocalypse"*  
 8:30 3-2 **BBC Newsnight**  
 9:00 3-2 **Tony Bennett: Library of Congress Gershwin Prize for Popular Song**  
 3-3 *This Old House*  
 10:00 3-1 *Amanpour on PBS*  
 3-3 *Woodwright's Shop*  
 10:30 3-2 **Piano Guys at Red Rocks: A Soundstage Special Event**  
 3-1 *Nightly Business Report*  
 3-3 *Craftsman's Legacy*  
 11:00 3-1 *PBS NewsHour*  
 3-3 *American Woodshop*  
 11:30 3-2 **Fleeced: Speaking Out Against Senior Financial Abuse**  
 3-3 *Joy of Painting*  
 12:00 3-2 **PBS NewsHour**  
 3-1 *Tony Bennett: Library of Congress Gershwin Prize for Popular Song*

### Saturday 13th

6:00 3-2 **Woodsmith Shop** "Craftsmanship"  
 6:30 3-2 **American Woodshop** "Tool Bench"  
 7:00 3-2 **BBQ with Franklin** "Direct Heat & Mesquite"  
 7:30 3-2 **America's Test Kitchen**  
 "Mediterranean Grill"  
 8:00 3-2 **Cook's Country** "Big Family Breakfast"  
 8:30 3-2 **Great British Baking Show** "Bread"  
 9:30 3-2 **Motorweek**  
 10:00 3-2 **P. Allen Smith's Garden Home**  
 "Road Trip"  
 10:30 3-2 **Taste of History** "Peace and Autonomy"  
 11:00 3-2 **Paint This with Jerry Yarnell**  
 "Triple Mischief," Pt. 4  
 3-1 *Julia Child-Cooking with Master Chefs*  
 11:30 3-2 **Joy of Painting** "Blue River"  
 3-1 *Ask This Old House*  
 12:00 3-2 **Beauty of Oil Painting** "Sunflower"  
 3-1 *This Old House*

12:30 3-2 **Quilt in a Day** "Gothic Barn"  
3-1 *This Old House*

1:00 3-2 **Fresh Quilting** "Using Mixed Media"  
3-1 *Ask This Old House*

1:30 3-2 **Fons & Porter's Love of Quilting**  
"Princess Pillows"  
3-1 *Motorweek*

2:00 3-2 **Creative Living**  
3-1 *Woodwright's Shop*

2:30 3-2 **Jazzy Vegetarian** "Rockilicious!"  
3-1 *Chef's Life*

3:00 3-2 **Knitting Daily** "Arm Yourself"  
3-1 *Martha Stewart's Cooking School*

3:30 3-2 **This Old House** "A Flair for Flares"  
3-1 *Martha Bakes*

4:00 3-2 **Ask This Old House**  
"Silica Dust, Wobbly Toilet"  
3-1 *Globe Trekker*

4:30 3-2 **Welcome to My Studio**  
"Box from Madeira"

5:00 3-2 **Sewing with Nancy** "10-20-30 Minutes  
to Recycle Jeans"  
3-1 *PBS NewsHour Weekend*

5:30 3-2 **It's Sew Easy** "Fashionable Sleeves"  
3-1 *Report from Santa Fe*

6:00 3-2 **Report from Santa Fe**  
3-1 *Antiques Roadshow*

6:30 3-2 **America's Heartland**

7:00 3-2 **Lawrence Welk Show**  
"200 Years of American Music," Pt. 1  
3-1 *Tony Bennett: Library of Congress  
Gershwin Prize for Popular Song*

8:00 3-2 **Fall and Rise of Reginald Perrin, Pt. 2**

8:30 3-2 **Red Green Show** "Folk Art"  
3-1 *Symphony for Nature: Crater Lake*

9:00 3-2 **Austin City Limits** "Jason Isbell & The  
400 Uni/Amanda Shires"  
3-1 *Speakeasy*  
3-3 *Lawrence Welk Show*

10:00 3-2 **Nova** "Black Hole Apocalypse"  
3-1 *Austin City Limits*  
3-3 *Classic Gospel*

11:00 3-1 *Nova* "Black Hole Apocalypse"  
3-3 *Bluegrass Underground*

11:30 3-3 *Sun Studio Sessions*

12:00 3-2 **Austin City Limits** "Jason Isbell & The  
400 Unit/Amanda Shires"

### Sunday 14th

6:00 3-2 **Painting and Travel**  
"Diesel Locomotive"

6:30 3-2 **Second Opinion** "Hospital Delirium"

7:00 3-2 **Antiques Roadshow** "Harrisburg"

8:00 3-2 **Classic Gospel** "Statler Brothers"

9:00 3-2 **Joy of Music** "Musical Visit to Verona"

9:30 3-2 **Music and the Spoken Word**

10:00 3-2 **Right to Risk: A 15 Day Journey**  
through Arizona's Grand Canyon

11:00 3-2 **Globe Trekker** "Rust Belt Highway"  
3-1 *Washington Week*

11:30 3-1 *To the Contrary with Bonnie Erbe*

12:00 3-2 **New Mexico True TV**  
3-1 *Today's Wild West, Pt. 2*

12:30 3-2 **In Focus New Mexico**  
3-1 *Start Up*

1:00 3-1 *Scully/The World Show*

1:30 3-2 **Travel Detective** "Hidden Gems/Oahu"  
3-1 *Market to Market*

2:00 3-2 **Closer to Truth** "Does Philosophy  
Help Science"  
3-1 *Garden Smart*

2:30 3-2 **Well Read** "Mark Shriver Pilgrimage"  
3-1 *Mind of a Chef*

3:00 3-2 **Second Opinion** "Chronic Pain"  
3-1 *Great British Baking Show*

3:30 3-2 **Healthy Minds** "Youth Anxiety"

4:00 3-2 **Classic Gospel** "David Phelps"  
3-1 *Aurora – Fire in the Sky*

5:00 3-2 **PBS NewsHour Weekend**  
3-1 *Well Read*

5:30 3-2 **Washington Week**  
3-1 *Fall and Rise of Reginald Perrin, Pt. 2*

6:00 3-2 **Our Stories: Vietnam, Pt. 2**  
3-1 *Masterpiece "Victoria"*

7:00 3-2 **Great Performances "Bennett and  
Gaga: Check to Check Live!"**  
3-1 *Masterpiece "Victoria 2," Pt. 1*

8:00 3-2 **Masterpiece** "Victoria 2: A Soldier's  
Daughter/Green-Eyed Monster," Pt. 1

9:00 3-1 *Independent Lens "Unrest"*  
3-3 *Tracks Ahead*

9:30 3-3 *America's Heartland*

10:00 3-2 **American Experience** "Into the Amazon"  
3-3 *This Old House*

10:30 3-1 *Bluegrass Underground*  
3-3 *Ask This Old House*

11:00 3-1 *Austin City Limits*  
3-3 *Motorweek*

11:30 3-3 *Woodwright's Shop*

12:00 3-2 **Nova** "Black Hole Apocalypse"  
3-1 *Masterpiece "Victoria 2," Pt. 1*

### Monday 15th

5:00 3-1 *Classical Stretch*

5:30 3-1 *Wai Lana Yoga*

6:00 3-1 *Nature "Yosemite"*

7:00 3-1 *All-Star Orchestra*

8:00 3-1 *Rick Steves' Europe*

8:30 3-1 *My Greek Table*

9:00 3-1 *Pati's Mexican Table*

9:30 3-1 *New Orleans Cooking*

10:00 3-1 *P. Allen Smith's Garden Home*

10:30 3-1 *Jazzy Vegetarian*

11:00 3-1 *Classical Stretch*

11:30 3-1 *Sit and Be Fit*

12:00 3-1 *Great British Baking Show*

1:00 3-1 *Masterpiece "Victoria 2," Pt. 1*

3:00 3-1 *Roadtrip Nation*

3:30 3-1 *Changing Seas*

4:00 3-1 *America's Heartland*

4:30 3-1 *Daytripper*

5:00 3-1 *Amanpour on PBS*

5:30 3-1 *Nightly Business Report*

6:00 3-1 *PBS NewsHour*

7:00 3-2 **Antiques Roadshow** "Harrisburg"  
3-1 *March*

8:00 3-2 **Suffragettes Forever! The Story of  
Women and Power, Pt. 1**  
3-1 *Antiques Roadshow*

9:00 3-2 **Independent Lens** "I Am Not Your Negro"  
3-1 *Right to Risk: 15 Day Journey Through  
Arizona's Grand Canyon*

3-3 *Great British Baking Show*

10:00 3-1 *Amanpour on PBS*  
3-3 *Masterpiece "Victoria," Pt. 10*

10:30 3-2 **Travel Detective** "Hidden Gems/Oahu"  
3-1 *Nightly Business Report*

11:00 3-2 **Antiques Roadshow** "Harrisburg"  
3-1 *PBS NewsHour*  
3-3 *Masterpiece "Victoria 2," Pt. 1*

12:00 3-2 **PBS NewsHour**  
3-1 *Independent Lens "I Am Not Your Negro"*

### Tuesday 16th

5:00 3-1 *Classical Stretch*

5:30 3-1 *Wai Lana Yoga*

6:00 3-1 *Antiques Roadshow*

7:00 3-1 *March*

8:00 3-1 *Storm of the Century: The Blizzard of '49*

9:00 3-1 *Healthy Body Healthy Mind*

9:30 3-1 *Second Opinion*

10:00 3-1 *Closer to Truth*

10:30 3-1 *Grey Glory*

11:00 3-1 *Classical Stretch*

11:30 3-1 *Wai Lana Yoga*

12:00 3-1 *Jacques Pepin: Heart & Soul*

12:30 3-1 *Taste of History*

1:00 3-1 *Antiques Roadshow*

2:00 3-1 *March*

3:00 3-1 *Storm of the Century: The Blizzard of '49*

4:00 3-1 *Consuelo Mack WealthTrack*

4:30 3-1 *Start Up*

5:00 3-1 *Amanpour on PBS*

5:30 3-1 *Nightly Business Report*

6:00 3-1 *PBS NewsHour*

7:00 3-2 **Finding Your Roots** "Black Like Me"  
3-1 *American Experience "Secret of Tuxedo  
Park"*

8:00 3-2 **American Experience**  
"Secret of Tuxedo Park"  
3-1 *Nasario Remembers the Rio Puerco*

9:00 3-2 **Fleeced: Speaking Out Against Senior  
Financial Abuse**  
3-1 *Our Stories: Vietnam, Pt. 2*  
3-3 *Antiques Roadshow*

9:30 3-2 **Creative Living**

10:00 3-2 **Frontline** "Rape on the Night Shift"  
3-1 *Amanpour on PBS*  
3-3 *History Detectives*

10:30 3-1 *Nightly Business Report*

11:00 3-2 **Amanpour on PBS**  
3-1 *PBS NewsHour*  
3-3 *Globe Trekker*

11:30 3-2 **TBA**

12:00 3-2 **PBS NewsHour**  
3-1 *Frontline "Rape on the Night Shift"*

### Wednesday 17th

5:00 3-1 *Classical Stretch*

5:30 3-1 *Wai Lana Yoga*

6:00 3-1 *Consuelo Mack WealthTrack*

6:30 3-1 *David Rubenstein Show*

7:00 3-1 *Samantha Brown's Places to Love*

7:30 3-1 *Crossing South*

8:00 3-1 *Nasario Remembers the Rio Puerco*

9:00 3-1 *Craftsman's Legacy*

9:30 3-1 *Rough Cut*

10:00 3-1 *American Woodshop*

10:30 3-1 *Woodwright's Shop*

11:00 3-1 *Classical Stretch*

11:30 3-1 *Sit and Be Fit*

12:00 3-1 *Sara's Weeknight Meals*

12:30 3-1 *Cook's Country*

1:00 3-1 *Family Ingredients*

1:30 3-1 *Crossing South*

2:00 3-1 *American Experience*  
"Secret of Tuxedo Park"

3:00 3-1 *Music Voyager*

3:30 3-1 *Mind of a Chef*

4:00 3-1 *Lidia's Kitchen*

4:30 3-1 *America's Test Kitchen*

5:00 3-1 *Amanpour on PBS*

5:30 3-1 *Nightly Business Report*

6:00 3-1 *PBS NewsHour*

7:00 3-2 **Nature** "Arctic Wolf Pack"  
3-1 *Finding Your Roots*

8:00 3-2 **Nova** "Hagia Sophia –  
Istanbul's Ancient Mystery"  
3-1 *Migrant Kitchen*

8:30 3-1 *Changing Seas*

9:00 3-2 **Understanding the Opioid Epidemic**  
3-1 *Nature "Arctic Wolf Pack"*  
3-3 *Mind of a Chef*

9:30 3-3 *Family Ingredients*

10:00 3-2 **Second Opinion** "Chronic Pain"  
3-1 *Amanpour on PBS*  
3-3 *Martha Stewart's Cooking School*

10:30 3-2 **This Old House** "Tommy's Flair for Flares"  
3-1 *Nightly Business Report*  
3-3 *Martha Bakes*

**11:00 3-2 Amanpour on PBS**  
 3-1 *PBS NewsHour*  
 3-3 *Start Up*  
**11:30 3-2 TBA**  
 3-3 *Samantha Brown's Places to Love*  
**12:00 3-2 PBS NewsHour**  
 3-1 *Nova "Hagia Sophia"*

4:00 3-1 *Healthy Body Healthy Mind*  
 4:30 3-1 *Asian American Life*  
 5:00 3-1 *Amanpour on PBS*  
 5:30 3-1 *Nightly Business Report*  
 6:00 3-1 *PBS NewsHour*  
**7:00 3-2 Market to Market**  
 3-1 *Washington Week*  
**7:30 3-2 Consuelo Mack WealthTrack**  
 3-1 *TBA*  
**8:00 3-2 Washington Week**  
 3-1 *Nova "Hagia Sophia"*  
**8:30 3-2 BBC Newsnight**  
**9:00 3-2 American Masters "Lorraine Hansberry"**  
 3-1 *Frontline "Rape on the Night Shift"*  
 3-3 *This Old House*  
 10:00 3-1 *Amanpour on PBS*  
 3-3 *Woodwright's Shop*  
 10:30 3-1 *Nightly Business Report*  
 3-3 *Craftsman's Legacy*  
**11:00 3-2 Masterpiece "Victoria 2: A Soldier's Daughter/Green-Eyed Monster," Pt. 1**  
 3-1 *PBS NewsHour*  
 3-3 *American Woodshop*  
 11:30 3-3 *Joy of Painting*  
 12:00 3-1 *American Masters "Lorraine Hansberry"*

**9:00 3-2 Austin City Limits "Herbie Hancock"**  
 3-1 *Streets of Wynwood*  
 3-3 *Lawrence Welk Show*  
**10:00 3-2 Nova "Hagia Sophia"**  
 3-1 *Austin City Limits*  
 3-3 *Classic Gospel*  
**11:00 3-2 Nature "Arctic Wolf Pack"**  
 3-1 *Nova "Hagia Sophia"*  
 3-3 *Bluegrass Underground*  
 11:30 3-3 *Sun Studio Sessions*  
**12:00 3-2 Austin City Limits "Herbie Hancock"**  
 3-1 *Nature "Arctic Wolf Pack"*

### Thursday 18th

5:00 3-1 *Classical Stretch*  
 5:30 3-1 *Wai Lana Yoga*  
 6:00 3-1 *IQ: Smartparent*  
 6:30 3-1 *Family Travel with Colleen Kelly*  
 7:00 3-1 *Finding Your Roots*  
 8:00 3-1 *Antiques Roadshow*  
 9:00 3-1 *Fons & Porter's Love of Quilting*  
 9:30 3-1 *Quilt in a Day*  
 10:00 3-1 *Knit and Crochet Now!*  
 10:30 3-1 *Sew it All*  
 11:00 3-1 *Classical Stretch*  
 11:30 3-1 *Wai Lana Yoga*  
 12:00 3-1 *Christopher Kimball's Milk Street*  
 12:30 3-1 *Chef's Life*  
 1:00 3-1 *Ellie's Real Good Food*  
 1:30 3-1 *Moveable Feast with Fine Cooking*  
 2:00 3-1 *Finding Your Roots*  
 3:00 3-1 *Science Goes to the Movies*  
 3:30 3-1 *Beyond Geek*  
 4:00 3-1 *Nova "Hagia Sophia"*  
 5:00 3-1 *Amanpour on PBS*  
 5:30 3-1 *Nightly Business Report*  
 6:00 3-1 *PBS NewsHour*  
**7:00 3-2 Frontline "Rape on the Night Shift"**  
 3-1 *Song of the Mountains*  
**8:00 3-2 Song of the Mountains**  
 3-1 *Red Green Show*  
 8:30 3-1 *Working Lands: A History of Agriculture in Nevada*  
**9:00 3-2 Today's Wild West "McGarry Ranches/ Bootmaker/Shiloh Rifles"**  
 3-1 *Creative Living*  
 3-3 *Roadtrip Nation*  
**9:30 3-2 Red Green Show "Mr. Clean"**  
 3-1 *Wheels of Yesteryear: Touring with the Tin Lizzies*  
 3-3 *Science Goes to the Movies*  
**10:00 3-2 Music City Roots Live from the Factory**  
 3-1 *Amanpour on PBS*  
 3-3 *Nature*  
 10:30 3-1 *Nightly Business Report*  
**11:00 3-2 Amanpour on PBS**  
 3-1 *PBS NewsHour*  
 3-3 *Nova*  
**11:30 3-2 TBA**  
 3-3 *Music Voyager*  
**12:00 3-2 PBS NewsHour**  
 3-1 *American Experience "Secret of Tuxedo Park"*

### Saturday 20th

6:00 3-2 **Woodsmith Shop "Chiseling"**  
 6:30 3-2 **American Woodshop "Outdoor Chair"**  
 7:00 3-2 **BBQ with Franklin "Competition"**  
 7:30 3-2 **America's Test Kitchen "Spanish"**  
 8:00 3-2 **Cook's Country "Taste of Tennessee"**  
 8:30 3-2 **Great British Baking Show "Batter"**  
 9:30 3-2 **Motorweek**  
 10:00 3-2 **P. Allen Smith's Garden Home "Eureka"**  
 10:30 3-2 **Taste of History "German Born, American Made"**  
 11:00 3-2 **Paint This with Jerry Yarnell "Winter Sentinels," Pt. 1**  
 3-1 *Julia Child-Cooking with Master Chefs*  
 11:30 3-2 **Joy of Painting "Majestic Pine"**  
 3-1 *Ask This Old House*  
 12:00 3-2 **Beauty of Oil Painting "Hydrangea"**  
 3-1 *This Old House*  
 12:30 3-2 **Quilt in a Day "Corn and Beans & Hens and Chicks"**  
 3-1 *This Old House*  
 1:00 3-2 **Fresh Quilting "Minimalism and Improv"**  
 3-1 *Ask This Old House*  
 1:30 3-2 **Fons & Porter's Love of Quilting "Friendship Rings"**  
 3-1 *Motorweek*  
 2:00 3-2 **Creative Living**  
 3-1 *Woodwright's Shop*  
 2:30 3-2 **Jazzy Vegetarian "Easy Italian"**  
 3-1 *Chef's Life*  
 3:00 3-2 **Knitting Daily "Playtime Knits"**  
 3-1 *Martha Stewart's Cooking School*  
 3:30 3-2 **This Old House "Time for Trim"**  
 3-1 *Martha Bakes*  
 4:00 3-2 **Ask This Old House**  
 3-1 *Globe Trekker*  
 4:30 3-2 **Welcome to My Studio "Baskets and Bears"**  
 5:00 3-2 **Sewing with Nancy "Trusty Triangles"**  
 3-1 *PBS NewsHour Weekend*  
 5:30 3-2 **It's Sew Easy "Glamorous 1930s"**  
 3-1 *Report from Santa Fe*  
 6:00 3-2 **Report from Santa Fe**  
 3-1 *Antiques Roadshow*  
 6:30 3-2 **America's Heartland**  
 7:00 3-2 **Lawrence Welk Show "200 Years of American Music," Pt. 2**  
 3-1 *American Masters "Lorraine Hansberry"*  
 8:00 3-2 **Fall and Rise of Reginald Perrin, Pt. 3**  
 3-3 *Lawrence Welk Show*  
 8:30 3-2 **Red Green Show "Mr. Clean"**

### Sunday 21st

6:00 3-2 **Painting and Travel "Old Drilling Rig"**  
 6:30 3-2 **Second Opinion "Transgender Health"**  
 7:00 3-2 **Antiques Roadshow "Harrisburg"**  
 8:00 3-2 **Classic Gospel "Gaither Vocal Band: Sometimes it Takes a Mountain"**  
 9:00 3-2 **Joy of Music "Musical Journey on the Rhine"**  
 9:30 3-2 **Music and the Spoken Word**  
 10:00 3-2 **Understanding the Opioid Epidemic**  
 11:00 3-2 **Globe Trekker "Rust Belt Highway"**  
 3-1 *Washington Week*  
 11:30 3-1 *To the Contrary with Bonnie Erbe*  
 12:00 3-2 **New Mexico True TV**  
 3-1 *Today's Wild West, Pt. 3*  
 12:30 3-2 **In Focus New Mexico**  
 3-1 *Start Up*  
 1:00 3-1 *Scully/The World Show*  
 1:30 3-2 **Travel Detective "Best Airline Safety"**  
 3-1 *Market to Market*  
 2:00 3-2 **Closer to Truth "Marvin Minsky"**  
 3-1 *Garden Smart*  
 2:30 3-2 **Well Read "Katie Kitamura, A Separation"**  
 3-1 *Mind of a Chef*  
 3:00 3-2 **Second Opinion "Medical Radiation"**  
 3-1 *Great British Baking Show*  
 3:30 3-2 **Healthy Minds "Youth Anxiety"**  
 4:00 3-2 **Classic Gospel "Guy Penrod Live: Hymns & Worship"**  
 3-1 *Nova "Hagia Sophia"*  
 5:00 3-2 **PBS NewsHour Weekend**  
 3-1 *Well Read*  
 5:30 3-2 **Washington Week**  
 3-1 *Fall and Rise of Reginald Perrin, Pt. 3*  
 6:00 3-2 **Our Story: Vietnam, Pt. 3**  
 3-1 *Masterpiece "Victoria 2," Pt. 1*  
 7:00 3-2 **Understanding the Opioid Epidemic**  
 8:00 3-2 **Masterpiece "Victoria 2: Warp and Weft/The Sins of the Father," Pt. 2**  
 3-1 *Masterpiece "Victoria 2," Pt. 2*  
 9:00 3-3 *Tracks Ahead*  
 9:30 3-3 *America's Heartland*  
 10:00 3-2 **American Experience "Secret of Tuxedo Park"**  
 3-1 *Independent Lens "I Am Not Your Negro"*  
 3-3 *This Old House*  
 10:30 3-3 *Ask This Old House*  
 11:00 3-2 **Understanding the Opioid Epidemic**  
 3-3 *Motorweek*  
 11:30 3-1 *Austin City Limits*  
 3-3 *Woodwright's Shop*  
 12:00 3-2 **Nova "Hagia Sophia"**

### Friday 19th

5:00 3-1 *Classical Stretch*  
 5:30 3-1 *Wai Lana Yoga*  
 6:00 3-1 *America's Heartland*  
 6:30 3-1 *Garden Smart*  
 7:00 3-1 *Song of the Mountains*  
 8:00 3-1 *Bluegrass Underground*  
 8:30 3-1 *Music Voyager*  
 9:00 3-1 *Globe Trekker*  
 10:00 3-1 *Joy of Painting*  
 10:30 3-1 *Beauty of Oil Painting*  
 11:00 3-1 *Classical Stretch*  
 11:30 3-1 *Sit and Be Fit*  
 12:00 3-1 *This Old House Hour*  
 1:00 3-1 *Make it Artsy*  
 1:30 3-1 *Welcome to My Studio*  
 2:00 3-1 *Woodsongs*  
 3:00 3-1 *Globe Trekker*

### Monday 22nd

5:00 3-1 *Classical Stretch*  
 5:30 3-1 *Wai Lana Yoga*  
 6:00 3-1 *Nature "Arctic Wolf Pack"*  
 7:00 3-1 *All-Star Orchestra*  
 8:00 3-1 *Rick Steves' Europe*  
 8:30 3-1 *My Greek Table*  
 9:00 3-1 *Pati's Mexican Table*  
 9:30 3-1 *New Orleans Cooking*  
 10:00 3-1 *P. Allen Smith's Garden Home*

10:30 3-1 *Jazzy Vegetarian*  
 11:00 3-1 *Classical Stretch*  
 11:30 3-1 *Sit and Be Fit*  
 12:00 3-1 *Great British Baking Show*  
 1:00 3-1 *Masterpiece "Victoria 2," Pt. 2*  
 3:00 3-1 *Roadtrip Nation*  
 3:30 3-1 *Changing Seas*  
 4:00 3-1 *America's Heartland*  
 4:30 3-1 *Daytripper*  
 5:00 3-1 *Amanpour on PBS*  
 5:30 3-1 *Nightly Business Report*  
 6:00 3-1 *PBS NewsHour*  
 7:00 3-2 **Antiques Roadshow** "Harrisburg"  
 3-1 *Mystery of Chaco Canyon*  
 8:00 3-2 **Suffragettes Forever! The Story of Women and Power, Pt. 2**  
 3-1 *Antiques Roadshow*  
 9:00 3-2 **Independent Lens** "The Force"  
 3-1 *Understanding the Opioid Epidemic*  
 3-3 *Great British Baking Show*  
 10:00 3-1 *Amanpour on PBS*  
 3-3 *Masterpiece "Victoria 2," Pt. 2*  
 10:30 3-2 **Travel Detective** "Best Airline Safety Videos"  
 3-1 *Nightly Business Report*  
 11:00 3-2 **Antiques Roadshow** "Harrisburg"  
 3-1 *PBS NewsHour*  
 12:00 3-2 **PBS NewsHour**  
 3-1 *Independent Lens "The Force"*

### Tuesday 23rd

5:00 3-1 *Classical Stretch*  
 5:30 3-1 *Wai Lana Yoga*  
 6:00 3-1 *Antiques Roadshow*  
 7:00 3-1 *Mystery of Chaco Canyon*  
 8:00 3-1 *Understanding the Opioid Epidemic*  
 9:00 3-1 *Healthy Body Healthy Mind*  
 9:30 3-1 *Second Opinion*  
 10:00 3-1 *Closer to Truth*  
 10:30 3-1 *Healthy Minds*  
 11:00 3-1 *Classical Stretch*  
 11:30 3-1 *Wai Lana Yoga*  
 12:00 3-1 *Jacques Pepin: Heart & Soul*  
 12:30 3-1 *Taste of History*  
 1:00 3-1 *Antiques Roadshow*  
 2:00 3-1 *Mystery of Chaco Canyon*  
 3:00 3-1 *Understanding the Opioid Epidemic*  
 4:00 3-1 *Consuelo Mack WealthTrack*  
 4:30 3-1 *Start Up*  
 5:00 3-1 *Amanpour on PBS*  
 5:30 3-1 *Nightly Business Report*  
 6:00 3-1 *PBS NewsHour*  
 7:00 3-2 **We'll Meet Again** "Children of WW2"  
 3-1 *Defending the Fire*  
 8:00 3-2 **Frontline** "Exodus"  
 3-1 *Paving the Way: The National Park-to-Park Highway, Pt. 1*  
 9:00 3-1 *Our Stories: Vietnam, Pt. 3*  
 3-3 *Antiques Roadshow*  
 10:00 3-2 **88 Days in the Mother Lode: Mark Twain Finds His Voice**  
 3-1 *Amanpour on PBS*  
 3-3 *History Detectives*  
 10:30 3-1 *Nightly Business Report*  
 11:00 3-2 **Amanpour on PBS**  
 3-1 *PBS NewsHour*  
 3-3 *Globe Trekker*  
 11:30 3-2 **TBA**  
 12:00 3-2 **PBS NewsHour**  
 3-1 *Frontline "Exodus"*

### Wednesday 24th

5:00 3-1 *Classical Stretch*  
 5:30 3-1 *Wai Lana Yoga*  
 6:00 3-1 *Consuelo Mack WealthTrack*  
 6:30 3-1 *David Rubenstein Show*  
 7:00 3-1 *Samantha Brown's Places to Love*

7:30 3-1 *Crossing South*  
 8:00 3-1 *Paving the Way: National Park-to-Park Highway, Pt. 1*  
 9:00 3-1 *Craftsman's Legacy*  
 9:30 3-1 *Rough Cut*  
 10:00 3-1 *American Woodshop*  
 10:30 3-1 *Woodwright's Shop*  
 11:00 3-1 *Classical Stretch*  
 11:30 3-1 *Sit and Be Fit*  
 12:00 3-1 *Sara's Weeknight Meals*  
 12:30 3-1 *Cook's Country*  
 1:00 3-1 *Family Ingredients*  
 1:30 3-1 *Crossing South*  
 2:00 3-1 *Defending the Fire*  
 3:00 3-1 *Music Voyager*  
 3:30 3-1 *Mind of a Chef*  
 4:00 3-1 *Lidia's Kitchen*  
 4:30 3-1 *America's Test Kitchen*  
 5:00 3-1 *Amanpour on PBS*  
 5:30 3-1 *Nightly Business Report*  
 6:00 3-1 *PBS NewsHour*  
 7:00 3-2 **Nature** "Animal Misfits"  
 3-1 *We'll Meet Again, Pt. 1*  
 8:00 3-2 **Nova** "Petra – Lost City of Stone"  
 3-1 *Migrant Kitchen*  
 8:30 3-1 *Changing Seas*  
 9:00 3-2 **Secrets of the Dead** "Scanning the Pyramids"  
 3-1 *Nature "Animal Misfits"*  
 3-3 *Mind of a Chef*  
 9:30 3-3 *Family Ingredients*  
 10:00 3-2 **Second Opinion** "Medical Radiation"  
 3-1 *Amanpour on PBS*  
 3-3 *Martha Stewart's Cooking School*  
 10:30 3-2 **This Old House** "Time for Trim"  
 3-1 *Nightly Business Report*  
 3-3 *Martha Bakes*  
 11:00 3-2 **Amanpour on PBS**  
 3-1 *PBS NewsHour*  
 3-3 *Start Up*  
 11:30 3-2 **TBA**  
 3-3 *Samantha Brown's Places to Love*  
 12:00 3-2 **PBS NewsHour**  
 3-1 *Nova "Petra – Lost City of Stone"*

### Thursday 25th

5:00 3-1 *Classical Stretch*  
 5:30 3-1 *Wai Lana Yoga*  
 6:00 3-1 *IQ: Smartparent*  
 6:30 3-1 *Family Travel with Colleen Kelly*  
 7:00 3-1 *We'll Meet Again, Pt. 1*  
 9:00 3-1 *Fons & Porter's Love of Quilting*  
 9:30 3-1 *Quilt in a Day*  
 10:00 3-1 *Knit and Crochet Now!*  
 10:30 3-1 *Sew it All*  
 11:00 3-1 *Classical Stretch*  
 11:30 3-1 *Wai Lana Yoga*  
 12:00 3-1 *Christopher Kimball's Milk Street*  
 12:30 3-1 *Chef's Life*  
 1:00 3-1 *Ellie's Real Good Food*  
 1:30 3-1 *Moveable Feast with Fine Cooking*  
 2:00 3-1 *We'll Meet Again, Pt. 1*  
 3:00 3-1 *Science Goes to the Movies*  
 3:30 3-1 *Beyond Geek*  
 4:00 3-1 *Nova "Petra – Lost City of Stone"*  
 5:00 3-1 *Amanpour on PBS*  
 5:30 3-1 *Nightly Business Report*  
 6:00 3-1 *PBS NewsHour*  
 7:00 3-2 **Frontline** "Exodus"  
 3-1 *Song of the Mountains*  
 8:00 3-1 *Red Green Show*  
 8:30 3-1 *Sportslook*  
 9:00 3-2 **Sportslook**  
 3-1 *Creative Living*  
 3-3 *Roadtrip Nation*  
 9:30 3-2 **Red Green Show** "No Tell Boatel"  
 3-1 *Symphony for Nature: Crater Lake*  
 3-3 *Science Goes to the Movies*

10:00 3-2 **Music City Roots Live from the Factory**  
 3-1 *Amanpour on PBS*  
 3-3 *Nature*  
 10:30 3-1 *Nightly Business Report*  
 11:00 3-2 **Amanpour on PBS**  
 3-1 *PBS NewsHour*  
 3-3 *Nova*  
 11:30 3-2 **TBA**  
 12:00 3-2 **PBS NewsHour**  
 3-1 *Defending the Fire*

### Friday 26th

5:00 3-1 *Classical Stretch*  
 5:30 3-1 *Wai Lana Yoga*  
 6:00 3-1 *America's Heartland*  
 6:30 3-1 *Garden Smart*  
 7:00 3-1 *Song of the Mountains*  
 8:00 3-1 *Bluegrass Underground*  
 8:30 3-1 *Music Voyager*  
 9:00 3-1 *Globe Trekker*  
 10:00 3-1 *Joy of Painting*  
 10:30 3-1 *Beauty of Oil Painting*  
 11:00 3-1 *Classical Stretch*  
 11:30 3-1 *Sit and Be Fit*  
 12:00 3-1 *This Old House Hour*  
 1:00 3-1 *Make it Artsy*  
 1:30 3-1 *Welcome to My Studio*  
 2:00 3-1 *Woodsongs*  
 3:00 3-1 *Globe Trekker*  
 4:00 3-1 *Healthy Body Healthy Mind*  
 4:30 3-1 *Asian American Life*  
 5:00 3-1 *Amanpour on PBS*  
 5:30 3-1 *Nightly Business Report*  
 6:00 3-1 *PBS NewsHour*  
 7:00 3-2 **Market to Market**  
 3-1 *Washington Week*  
 7:30 3-2 **Consuelo Mack WealthTrack**  
 3-1 *TBA*  
 8:00 3-2 **Washington Week**  
 3-1 *Nova "Petra – Lost City of Stone"*  
 8:30 3-2 **BBC Newsnight**  
 9:00 3-2 **Best of the Boston Pops**  
 3-1 *Frontline "Exodus"*  
 3-3 *This Old House Hour*  
 10:00 3-2 **Masterpiece** "Victoria 2: Warp and Weft/The Sins of the Father," Pt. 2'  
 3-3 *Woodwright's Shop*  
 10:30 3-3 *Craftsman's Legacy*  
 11:00 3-1 *PBS NewsHour*  
 3-3 *American Woodshop*  
 11:30 3-3 *Joy of Painting*  
 12:00 3-2 **PBS NewsHour**  
 3-1 *Great Performances at the Met "Norma"*

### Saturday 27th

6:00 3-2 **Woodsmith Shop** "Perfect Tenons"  
 6:30 3-2 **American Woodshop** "Headboards & Bedsteads"  
 7:00 3-2 **BBQ with Franklin** "Pickin' Beef"  
 7:30 3-2 **America's Test Kitchen** "Fast Food"  
 8:00 3-2 **Cook's Country** "The Devil Made Me Do It"  
 8:30 3-2 **Great British Baking Show** "Pastries"  
 9:30 3-2 **Motorweek**  
 10:00 3-2 **P. Allen Smith's Garden Home**  
 10:30 3-2 **Taste of History** "Creole Cuisine and the War of 1812"  
 11:00 3-2 **Paint This with Jerry Yarnell** "Winter Sentinels," Pt. 2  
 3-1 *Julia Child–Cooking with Master Chefs*  
 11:30 3-2 **Joy of Painting** "Winter Mountain"  
 3-1 *Ask This Old House*  
 12:00 3-2 **Beauty of Oil Painting** "Roberto Rooster Returns"  
 3-1 *This Old House*

12:30 3-2 **Quilt in a Day** "Gambrel Roof Barn"  
3-1 *This Old House*

1:00 3-2 **Fresh Quilting** "Go Free Form"  
3-1 *Ask This Old House*

1:30 3-2 **Fons & Porter's Love of Quilting**  
"Pioneer Rose"  
3-1 *Motorweek*

2:00 3-2 **Creative Living**  
3-1 *Woodwright's Shop*

2:30 3-2 **Jazzy Vegetarian**  
"Mediterranean Flavors"  
3-1 *Chef's Life*

3:00 3-2 **Knitting Daily** "Crochet Home"  
3-1 *Martha Stewart's Cooking School*

3:30 3-2 **This Old House** "Homeowners Pitch In"  
3-1 *Martha Bakes*

4:00 3-2 **Ask This Old House** "Dutch Door, Landscape Checkers"  
3-1 *Globe Trekker*

4:30 3-2 **Welcome to My Studio**  
"Painting an Ellipse"

5:00 3-2 **Sewing with Nancy** "Trusty Triangles"  
3-1 *PBS NewsHour Weekend*

5:30 3-2 **It's Sew Easy** "Feminine Fashions"  
3-1 *Report from Santa Fe*

6:00 3-2 **Report from Santa Fe**  
3-1 *Antiques Roadshow*

6:30 3-2 **America's Heartland**

7:00 3-2 **Lawrence Welk Show**  
"The Italian Show (1966)"  
3-1 *Great Performances at the Met "Norma"*

8:00 3-2 **Fall and Rise of Reginald Perrin, Pt. 4**

8:30 3-2 **Red Green Show** "No Tell Boatel"

9:00 3-2 **Austin City Limits** "Run the Jewels"  
3-3 *Lawrence Welk Show*

10:00 3-2 **Nova** "Petra – Lost City of Stone"  
3-1 *Austin City Limits*  
3-3 *Classic Gospel*

11:00 3-2 **Nature** "Animal Misfits"  
3-1 *Secrets of the Dead "Scanning the Pyramids"*  
3-3 *Bluegrass Underground*

11:30 3-3 *Sun Studio Sessions*

12:00 3-2 **Austin City Limits** "Run the Jewels"

### Sunday 28th

6:00 3-2 **Painting and Travel** "Florida Palms"

6:30 3-2 **Second Opinion** "Atrial Fibrillation"

7:00 3-2 **Antiques Roadshow** "Harrisburg"

8:00 3-2 **Classic Gospel** "A Billy Graham Music Homecoming"

9:00 3-2 **Joy of Music** "Elbe River," Pt. 1

9:30 3-2 **Music and the Spoken Word**

10:00 3-2 **Secrets of the Dead** "Scanning the Pyramids"

11:00 3-2 **Globe Trekker** "Transcontinental RR"  
3-1 *Washington Week*

11:30 3-1 *To the Contrary with Bonnie Erbe*

12:00 3-2 **Cultura**  
3-1 *Today's Wild West, Pt. 4*

12:30 3-2 **Fleeced: Speaking Out Against Senior Financial Abuse**  
3-1 *Start Up*

1:00 3-2 **Great Performances at the Met** "Norma"  
3-1 *Scully/The World Show*

1:30 3-1 *Market to Market*

2:00 3-1 *Garden Smart*

2:30 3-1 *Mind of a Chef*

3:00 3-1 *Great British Baking Show*

4:00 3-2 **Classic Gospel** "Joey+Rory"  
3-1 *Nova "Petra-Lost City of Stone"*

5:00 3-2 **PBS NewsHour Weekend**  
3-1 *Well Read*

5:30 3-2 **Washington Week**  
3-1 *Fall and Rise of Reginald Perrin, Pt. 4*

6:00 3-2 **Suffragettes Forever! Pt. 1**  
3-1 *Masterpiece "Victoria 2," Pt. 1*

7:00 3-2 **Queen Elizabeth's Secret Agents**

8:00 3-2 **Masterpiece** "Victoria 2," Pt. 3  
3-1 *Masterpiece "Victoria 2," Pt. 3*

9:00 3-2 **We'll Meet Again** "Children of WW2"  
3-1 *Queen Elizabeth's Secret Agents*  
3-3 *Tracks Ahead*

9:30 3-3 *America's Heartland*

10:00 3-2 **Queen Elizabeth's Secret Agents**  
3-1 *Independent Lens "The Force"*  
3-3 *This Old House*

10:30 3-3 *Ask This Old House*

11:00 3-2 **Piano Guys at Red Rocks**  
3-3 *Motorweek*

11:30 3-1 *Austin City Limits*  
3-3 *Woodwright's Shop*

12:00 3-2 **Nova** "Petra – Lost City of Stone"

### Monday 29th

5:00 3-1 *Classical Stretch*

5:30 3-1 *Wai Lana Yoga*

6:00 3-1 *Nature "Animal Misfits"*

7:00 3-1 *Queen Elizabeth's Secret Agents*

8:00 3-1 *Rick Steves' Europe*

8:30 3-1 *My Greek Table*

9:00 3-1 *Pati's Mexican Table*

9:30 3-1 *New Orleans Cooking*

10:00 3-1 *P. Allen Smith's Garden Home*

10:30 3-1 *Jazzy Vegetarian*

11:00 3-1 *Classical Stretch*

11:30 3-1 *Sit and Be Fit*

12:00 3-1 *Great British Baking Show*

1:00 3-1 *Masterpiece "Victoria 2," Pt. 3*

2:00 3-1 *Queen Elizabeth's Secret Agents*

3:00 3-1 *Roadtrip Nation*

3:30 3-1 *Changing Seas*

4:00 3-1 *America's Heartland*

4:30 3-1 *Daytripper*

5:00 3-1 *Amanpour on PBS*

5:30 3-1 *Nightly Business Report*

6:00 3-1 *PBS NewsHour*

7:00 3-2 **Antiques Roadshow** "New Orleans"  
3-1 *Suffragettes Forever! Pt. 1*

8:00 3-2 **Suffragettes Forever! Pt. 3**  
3-1 *Antiques Roadshow*

9:00 3-2 **Independent Lens** "I Am Another You"  
3-1 *After Ebola: Preparing for a Pandemic*  
3-3 *Great British Baking Show*

10:00 3-1 *Amanpour on PBS*  
3-3 *Masterpiece "Victoria 2," Pt. 2*

10:30 3-2 **Travel Detective** "Hidden Gems of Ras Al-Khaimah"  
3-1 *Nightly Business Report*

11:00 3-2 **Antiques Roadshow** "New Orleans"  
3-1 *PBS NewsHour*

12:00 3-2 **PBS NewsHour**  
3-1 *Independent Lens "I Am Another You"*

### Tuesday 30th

5:00 3-1 *Classical Stretch*

5:30 3-1 *Wai Lana Yoga*

6:00 3-1 *Antiques Roadshow*

7:00 3-1 *Suffragettes Forever! Pt. 1*

8:00 3-1 *After Ebola: Preparing for a Pandemic*

9:00 3-1 *Healthy Body Healthy Mind*

9:30 3-1 *Second Opinion*

10:00 3-1 *Closer to Truth*

10:30 3-1 *Healthy Minds*

11:00 3-1 *Classical Stretch*

11:30 3-1 *Wai Lana Yoga*

12:00 3-1 *Jacques Pepin: Heart & Soul*

12:30 3-1 *Taste of History*

1:00 3-1 *Antiques Roadshow*

2:00 3-1 *Suffragettes Forever! Pt. 1*

3:00 3-1 *After Ebola: Preparing for a Pandemic*

4:00 3-1 *Consuelo Mack WealthTrack*

4:30 3-1 *Start Up*

5:00 3-1 *Amanpour on PBS*

5:30 3-1 *Nightly Business Report*

6:00 3-1 *PBS NewsHour*

7:00 3-2 **We'll Meet Again** "Rescued for Mount St. Helens," Pt. 2  
3-1 *American Experience "Andrew Carnegie"*

8:00 3-2 **American Experience** "Andrew Carnegie"  
3-1 *Paving the Way: The National Park-to-Park Highway, Pt. 2*

9:00 3-2 **You Should Know**  
3-1 *88 Days in the Mother Lode: Mark Twain Finds His Voice*  
3-3 *Antiques Roadshow*

9:30 3-2 **Creative Living**

10:00 3-2 **Frontline** "North Korea's Deadly Dictator"  
3-1 *Amanpour on PBS*  
3-3 *History Detectives*

10:30 3-1 *Nightly Business Report*

11:00 3-2 **Amanpour on PBS**  
3-1 *PBS NewsHour*  
3-3 *Globe Trekker*

11:30 3-2 **TBA**

12:00 3-2 **PBS NewsHour**  
3-1 *Frontline "North Korea's Deadly Dictator"*

### Wednesday 31st

5:00 3-1 *Classical Stretch*

5:30 3-1 *Wai Lana Yoga*

6:00 3-1 *Consuelo Mack WealthTrack*

6:30 3-1 *Growing Bolder*

7:00 3-1 *Samantha Brown's Places to Love*

7:30 3-1 *Crossing South*

8:00 3-1 *Paving the Way: National Park-to-Park Highway, Pt. 2*

9:00 3-1 *Craftsman's Legacy*

9:30 3-1 *Rough Cut*

10:00 3-1 *American Woodshop*

10:30 3-1 *Woodwright's Shop*

11:00 3-1 *Classical Stretch*

11:30 3-1 *Sit and Be Fit*

12:00 3-1 *Sara's Weeknight Meals*

12:30 3-1 *Cook's Country*

1:00 3-1 *Family Ingredients*

1:30 3-1 *Crossing South*

2:00 3-1 *American Experience "Andrew Carnegie"*

3:00 3-1 *Music Voyager*

3:30 3-1 *Mind of a Chef*

4:00 3-1 *Lidia's Kitchen*

4:30 3-1 *America's Test Kitchen*

5:00 3-1 *Amanpour on PBS*

5:30 3-1 *Nightly Business Report*

6:00 3-1 *PBS NewsHour*

7:00 3-2 **Nature** "Animals with Cameras," Pt. 1  
3-1 *We'll Meet Again, Pt. 2*

8:00 3-2 **Nova** "The Impossible Flight"  
3-1 *Migrant Kitchen*

8:30 3-1 *Changing Seas*

9:00 3-1 *Nature "Animals with Cameras," Pt. 1*  
3-3 *Mind of a Chef*

9:30 3-3 *Family Ingredients*

10:00 3-2 **Second Opinion** "The Aging Face"  
3-1 *Amanpour on PBS*  
3-3 *Martha Stewart's Cooking School*

10:30 3-2 **This Old House** "Homeowner's Pitch in"  
3-1 *Nightly Business Report*  
3-3 *Martha Bakes*

11:00 3-2 **Amanpour on PBS**  
3-1 *PBS NewsHour*  
3-3 *Start Up*

11:30 3-2 **TBA**  
3-3 *Samantha Brown's Places to Love*

12:00 3-2 **PBS NewsHour**  
3-1 *Nova "The Impossible Flight"*

# u KENW/KMTH-FM LOG u

**KENW-FM, Portales, NM, 89.5 MHz — KMTH-FM, Maljamar, NM, 98.7 MHz — KENM-FM, Tucumcari, NM, 88.9 MHz — KENU-FM, Des Moines, NM, 88.5 MHz — KENG-FM, Ruidoso, NM, 88.5 MHz — KENE-FM, Raton, NM, 88.1 MHz**

**Translators:** Apache Springs, 90.9 MHz; Clayton, 93.5 MHz; Des Moines, 106.1 MHz; Ft. Sumner, 91.7 MHz; Las Vegas, 88.1 MHz; Roswell, 91.1 MHz; Wagon Mound, 92.1 MHz.

## *Sundays*

**8:00 a.m. WITH HEART AND VOICE**  
 Jan 7 Epiphany  
 Jan 14 Happy Birthday Wolfgang, Maurice & John!  
 Jan 21 What's New?  
 Jan 28 Hymns, Hymns, and more Hymns

**9:00 a.m. FOOTLIGHT PARADE**  
 Jan 7 Callings in Life  
 Jan 14 1968 on Stage and Screen  
 Jan 21 A Tribute to Robert Preston  
 Jan 28 Party Down!

**10:00 a.m. RADIO LAB**  
 Jan 7 Emergence  
 Jan 14 TBA  
 Jan 21 Birthstory  
 Jan 28 Playing God

**11:00 a.m. FRESH AIR WEEKEND**

**12:00 p.m. PEOPLE'S PHARMACY**

**1:00 p.m. THIS AMERICAN LIFE**

**2:00 p.m. THE FOLK SAMPLER**  
 Jan 7 Such a Loss  
 Jan 14 What's New?  
 Jan 21 Another Fool  
 Jan 28 What's in a Name

**3:00 p.m. MOUNTAIN STAGE**  
 Jan 7 With Special Guest Host Conor Knight: Shovels & Rope; Todd Snider; Rhett Miller; Joe Purdy; River Whyless  
 Jan 14 Aoife O'Donovan; Willie Watson; John Doyle; Brandy Clark; Francis Luke Accord  
 Jan 21 Fabulous Thunderbirds; John Paul White; Golden State Lone Star Revue; Terry Reid; Honey Island Swamp Band  
 Jan 28 Iron & Wine; Tift Merritt; Paper Bird; Andy Shauff; Todd Burge

**5:00 p.m. CELTIC CONNECTIONS**  
 Jan 7 New Releases  
 Jan 14 Child Ballads XIV  
 Jan 21 Music of O'Carolan  
 Jan 28 Songs of Robert Burns

**6:00 p.m. ALL THINGS CONSIDERED**

**7:00 p.m. THE CLEVELAND ORCHESTRA**  
 Jan 7 SCHOENBERG: *Finding Rothko*  
 KORNGOLD: Violin Concerto  
 RACHMANINOFF: *Symphonic Dances*  
 Jan 14 WAGNER: Rienzi Overture;  
 "Tristan and Isolde" Prelude & Love Death  
 BRUCKNER: Symphony No. 9 (unfinished)  
 Jan 21 MOZART: Piano Concerto No. 17 in G; Concerto Rondo in D; Piano Concerto No. 25 in C  
 Jan 28 MOZART: Piano Concerto No. 23 in A; Divertimento in F; Piano Concerto No. 24 in c

**9:00 p.m. THE ROMANTIC HOUR**  
 Jan 7 Poems and Verses Connected with Music of the Past  
 Jan 14 Ode to Salvador Dali  
 Jan 21 Romance Blooms Between Leos Janacek & Kamila Stosslova  
 Jan 28 Poetry of Khalil Gibran

**10:00 p.m. WEEKEND PERFORMANCE TODAY**

**11:00 p.m. MUSIC OUT OF THE NIGHT AND INTO THE MORNING** until 5:00 a.m. when **Morning Edition** begins.

## *Mondays*

**7:00 p.m. CHICAGO SYMPHONY ORCHESTRA**  
 Jan 1 HAYDN: Symphony No. 5 in B-Flat  
 SZYMANOWSKI: Violin Concerto No. 1  
 J. STRAUSS: *Emperor Waltz*  
 R. STRAUSS: Suite from *Der Rosenkavalier*  
 LUTOSLAWSKI: Symphony No. 3  
 Jan 8 RAMEAU: Dance Suite from *Platee*  
 POULENC: *Concert champetre* for Harpsichord and Orchestra  
 BACH: Four Preludes & Fugues from *The Well-Tempered Clavier*; Orchestral Suite No. 3 in D; Passacaglia & Fugue in c  
 Jan 15 MOZART: Masonic Funeral Music, K.477  
 WAGNER: Prelude & Leibstod from *Tristan and Isolde*  
 BRAHMS: *A German Requiem*  
 LUTOSLAWSKI: *Musique Funebre*  
 Jan 22 MOZART: Piano Concerto No. 22 in E-Flat, K. 482  
 STRAUSS: *An Alpine Symphony*  
 WEBER: *Im Sommerwind*  
 PROKOFIEV: *Ivan the Terrible*  
 STRAVINSKY: Suite from *The Firebird*

**9:00 p.m. PERFORMANCE TODAY**

**11:00 p.m. MUSIC OUT OF THE NIGHT AND INTO THE MORNING** until 5:00 a.m. when **Morning Edition** begins.

## *Tuesdays*

**7:00 p.m. NEW YORK PHILHARMONIC**  
 Jan 2 Music of Our Time  
 Jan 9 BERLIOZ: Overture to *Les Francs-juges*  
 SAINT-SAENS: Symphony No. 3 in c  
 Jan 16 STRAVINSKY: *Renard*; *L'Histoire du soldat* (The Soldiers Tale)

Jan 23 BEETHOVEN: Symphony No. 1 in C  
 BRUCKNER: Symphony No. 7 in E  
 Jan 30 MOZART: Symphony No. 31 in D  
 BRAHMS: Symphony No. 4 in e

**9:00 p.m. PERFORMANCE TODAY**

**11:00 p.m. MUSIC OUT OF THE NIGHT AND INTO THE MORNING** until 5:00 a.m. when **Morning Edition** begins.

## *Wednesdays*

**7:00 p.m. SPOLETO CHAMBER MUSIC**  
 Jan 3 HANDEL: "Rompo i lacci" from Flavio  
 HANDEL: "Ombra mai fu" from Xerxes  
 FRANCK: Piano Quintet in F Minor  
 Jan 10 MOZART: Concerto in B-flat  
 JANACEK: String Quartet No. 1  
 RAVEL: Tzigane  
 Jan 17 BACH: Sonata for Violin and Keyboard, No. 2 in A  
 GERSHWIN: "Summertime"  
 MENDELSSOHN: Piano Sextet  
 Jan 24 HANDEL: "Where'er You Walk"  
 HAYDN: Divertimento in C  
 FARRIN: "Unico spirito"  
 GLINKA: Trio pathetique in d  
 Jan 31 POULENC: Sonata for Clarinet and Bassoon  
 FAURE: Piano Quintet No. 1 in d  
 RAVEL: La Valse

**8:00 p.m. LIVING AMERICAN COMPOSERS**  
 Jan 3 Closeup with Jennifer Higdon, Pt. 1  
 Jan 10 Closeup with Jennifer Higdon, Pt. 2  
 Jan 17 New Music Festival 2016  
 Jan 24 Festival Redux, Part I  
 Jan 31 Festival Redux, Part II

**9:00 p.m. PERFORMANCE TODAY**

**11:00 p.m. MUSIC OUT OF THE NIGHT AND INTO THE MORNING** until 5:00 a.m. when **Morning Edition** begins.

## *Thursdays*

**7:00 p.m. COLLECTORS' CORNER with HENRY FOGEL**  
 Jan 4 Robert Kajanus conducts Sibelius  
 Jan 11 The Art of Otto Klemperer, Prog. 1  
 Jan 18 The Art of Otto Klemperer, Prog. 2  
 Jan 25 The Art of Otto Klemperer, Prog. 3

**9:00 p.m. PERFORMANCE TODAY**

**11:00 p.m. MUSIC OUT OF THE NIGHT AND INTO THE MORNING** until 5:00 a.m. when **Morning Edition** begins.

## *Fridays*

**7:00 p.m. CONCIERTO**

**8:00 p.m. FIESTA! With ELBIO BARILARI**  
 Jan 5 Island Hopping  
 Jan 12 The Magical Palette of Edino Krieger  
 Jan 19 Celebration of Latin American Women Composers  
 Jan 26 Villa-Lobos: Folk Traveler



9:00 p.m. **PERFORMANCE TODAY**  
 11:00 p.m. **MUSIC OUT OF THE NIGHT AND INTO THE MORNING** until 5:00 a.m. when **People's Pharmacy** begins.

**Saturdays**

8:00 a.m. **BEST OF CAR TALK**  
 9:00 a.m. **WAIT WAIT DON'T TELL ME**  
 10:00 a.m. **THE BIONEERS: Revolution from the Heart of Nature**  
 10:30 a.m. **NEW LETTERS ON THE AIR**  
 11:00 a.m. **THE METROPOLITAN OPERA**  
 Jan 6 HUMPERDINCK: *Hansel and Gretel*  
 Jan 13 MASCAGNI: *Cavalleria Rusticana*  
 LEONCAVALLO: *Pagliacci*  
 Jan 20 MASSENET: *Thais*  
 Jan 27 PUCCINI: *Tosca*  
 3:00 p.m. **CLASSICAL GUITAR ALIVE!**  
 4:00 p.m. **A PRAIRIE HOME COMPANION**  
 Jan 6 Live from San Francisco, CA  
 Jan 13 Live from Portland, OR  
 Jan 20 TBA  
 Jan 27 Live from Austin, TX  
 6:00 p.m. **ALL THINGS CONSIDERED**

7:00 p.m. **MARIAN McPARTLAND's PIANO JAZZ**  
 Jan 6 Lorraine Desmarais, French-Canadian Pianist & Composer  
 Jan 13 Tony DeSare, Vocalist & Pianist  
 Jan 20 Eddie Palmieri, Virtuoso Pianist, Bandleader & Composer  
 Jan 27 Liz Magnes, Israel's most Dynamic & Creative Solo Jazz Pianist  
 8:00 p.m. **SWINGIN' DOWN THE LANE**  
 Jan 6 Top Hits of 1918, Part 2  
 Jan 13 Centenarians 2018, Pt. 1  
 Jan 20 Centenarians 2018, Pt. 2  
 Jan 27 Ladies' Day  
 9:00 p.m. **JAZZ PROFILES**  
 Jan 6 Duke Ellington: The Overview Pt. 1  
 Jan 13 Duke Ellington: The Overview Pt. 2  
 Jan 20 Duke Ellington: Bandleader: Pt. 1  
 Jan 27 Duke Ellington: Bandleader: Pt. 2  
 10:00 p.m. **DREAMFARM RADIO**  
 11:00 p.m. **JAZZ NIGHT:**  
 12:00 a.m. **MUSIC OUT OF THE NIGHT AND INTO THE MORNING** until 6:00 a.m. when **Weekend Edition** begins.

**KENW-FM Public Radio Network now offers several listening options.**

Now, you have several new ways to enjoy KENW-FM and NPR programming and take your favorite radio programs with you wherever you go. You can listen to KENW-FM from your computer live online 24/7 on our main KENW website: [www.kenw.org](http://www.kenw.org). Just click on the "Listen Live" icon in the upper right corner.

And now, KENW-FM also offers a free mobile app that you can simply download and add to your cell phone, tablet, computer or any other mobile device, so you can listen live 24/7 to KENW-FM right from your mobile device.

To find the free KENW-FM mobile app, go to GooglePlay (<https://play.google.com>) or iTunes and search "KENW." Then, simply download the free KENW-FM mobile app to your device(s) so you can listen to our NPR radio station from your mobile device.

The free KENW-FM mobile app looks like this:




**FM Radio Week-at-a-Glance**

	Sunday	Monday	Tuesday	Wednesday	Thursday	Friday	Saturday	Monday through Friday
5:00							5:00 a.m. People's Pharmacy	Regional Newscasts at: 5:31, 6:31, 7:31, and 10:06 a.m. 12:06, 2:06, and 5:31 p.m.
6:00	Weekend Edition	Morning Edition	Morning Edition	Morning Edition	Morning Edition	Morning Edition	6:00 a.m. Weekend Edition	
7:00	With Heart and Voice						8:00 a.m. Car Talk	8:01 Marketplace Report
8:00	Footlight Parade						9:00 a.m. Wait, Wait... Don't Tell Me	8:09 SnoCountry Ski Report
9:00	Radiolab	Music	Music	Music	Music	Music	10:00 a.m. Bioneers	8:15 Current Cast
10:00	Fresh Air Weekend with Terry Gross	News & Features	News & Features	News & Features	News & Features	News & Features	10:30 a.m. New Letters	8:20 Nature Notes (Tu) Travelers in the Night (W)
11:00	People's Pharmacy (R)						11:00 a.m. The Metropolitan Opera	8:30 Health in a Heartbeat
12:00	This American Life							8:45 Insight
1:00	The Folk Sampler							9:00 Weather/News
2:00								9:05 Dateline New Mexico
3:00		Here & There with David Marash						9:15 Marketplace Tech Report
3:30	Mountain Stage	Marketplace	Marketplace	Marketplace	Marketplace	Marketplace		9:20 A Southwest Spotlight (F)
4:00								9:30 Disability Awareness
4:30								9:45 Fitness Minute
5:00	Celtic Connections	All Things Considered	All Things Considered	All Things Considered	All Things Considered	All Things Considered		10:00 News/Regional News
6:00	All Things Considered	PBS NewsHour	PBS NewsHour	PBS NewsHour	PBS NewsHour	PBS NewsHour		10:15 Engines of Our Ingenuity
7:00	Cleveland Orchestra	Chicago Symphony Orchestra	New York Philharmonic	Spoletto Chamber Music	Collectors' Corner	Concierto with Frank Dominguez		10:30 Composers' Datebook
8:00				Living American Composers		Fiesta! with Elbio Barilari		11:00 Weather/News
9:00	The Romantic Hours	Performance Today	Performance Today	Performance Today	Performance Today	Performance Today		11:15 Melinda's Garden Moment
10:00	Performance Today							11:30 Pulse of the Planet
11:00	Classical Music Out of the Night until 5:00 a.m.	Classical Music Out of the Night until 5:00 a.m.	Classical Music Out of the Night until 5:00 a.m.	Classical Music Out of the Night until 5:00 a.m.	Classical Music Out of the Night until 5:00 a.m.	Classical Music Out of the Night until 5:00 a.m. when People's Pharmacy begins.		11:45 Climate Connections
								12:00 News/Regional News
								12:15 Community Calendar
								12:30 Moment in Time SnoCountry Ski Report
								12:45 Arts and Science
								1:00 Weather/News
								1:15 Sound Beat
								1:30 Loh Down on Science
								1:45 StarDate
								2:00 News/Regional News
								2:15 Bird Note
								2:20 A Southwest Spotlight (W)
								2:30 American Storyteller
								2:45 90 Second Naturalist
								3:00 Weather/News
								3:06 Innovation Now/ Fitness Minute
								3:15 The Plant Detective
								3:25 Dateline New Mexico
								3:29 SnoCountry Ski Report
								5:30 Regional News
								6:57 StarDate/Weather
								9:00 Weather/News
								12:00/3:00 a.m. Weather/News

# BUSINESS FRIENDS

**Taylor Water Well Service**  
Water Well Drilling  
Pump Sales & Service



Carlsbad, NM  
Live from Here, FM  
Wait, Wait...Don't Tell Me, FM  
Radio Lab, FM

**This space could be yours!**

For Underwriting opportunities, please call toll-free (888) 367-5369. Ask for Rena for TV, Amie for FM

**Featherstone Development Corporation**

Roswell, NM  
Nature,  
Nightly Business Report,  
Star Gazers

**CJ's**

Pharmacy... At your Service  
Portales, NM  
Fitness Minute,  
Classical Guitar Alive, FM  
Mt. Stage, FM

**This space could be yours!**

For Underwriting opportunities, please call toll-free (888) 367-5369. Ask for Rena for TV, Amie for FM

**The NEWS**

Clovis, Portales, NM  
Austin City Limits

**YUCCA**

Portales, NM  
Nova

**Clovis Community College Cultural Art Series**

Primetime Programming, TV

**Roswell, NM**

Classic Gospel

**James Polk Stone Community Bank**

Clovis, Eunice, Hagerman, Hobbs, Portales, Roswell  
Austin City Limits

**PLATEAU**

Evening News/Public Affairs  
BBC World News  
News 3 New Mexico

**Featherstone Development Corporation**

Roswell, NM  
Morning Edition, FM  
Jazz Programming, FM

**New Mexico Humanities Council**

Albuquerque, NM  
(505) 277-3217  
www.nmhum.org  
Morning Edition, FM  
Weekend Edition, FM

**Names and Numbers Telephone Book**

Evening News/Public Affairs Programming  
News 3 New Mexico

**EASTERN NEW MEXICO UNIVERSITY**

Portales, NM  
Austin City Limits

**FEC**

A Touchstone Energy Cooperative  
Farmers' Electric Cooperative, Inc. of New Mexico  
Clovis, NM  
Ask This Old House

**This space could be yours!**

For Underwriting opportunities, please call toll-free (888) 367-5369. Ask for Rena for TV, Amie for FM

Roswell, NM

Piano Jazz, FM  
Jazz Programming, FM

**THE BOX**

Clovis and Portales  
Wait, Wait...Don't Tell Me, FM

**High Country Agency, Inc.**

Ruidoso, NM  
Morning Edition, FM

**SECURITY STATE BANK**

Farwell, TX  
Antiques Roadshow

**Living Desert Zoo & Gardens State Park**

Open Every Day Except Christmas  
Carlsbad, NM  
Austin City Limits,  
Nature, PBS NewsHour

**CJ's**

Pharmacy... At your Service  
Portales, NM  
Antiques Roadshow,  
Health related programs,  
Report from Santa Fe,  
Sportslook

**Ford MERCURY LINCOLN**

**Permian Ford-Lincoln-Mercury, Inc.**  
Hobbs, NM  
Weekend ATC, FM  
All Things Considered, FM  
Car Talk, FM

**This space could be yours!**

For Underwriting opportunities, please call toll-free (888) 367-5369. Ask for Rena for TV, Amie for FM

**VALLEY MOWER CLINIC, INC**

Clovis, NM  
P. Allen Smith's Garden to Table

**The Ruidoso Physical Therapy Clinic**

Ruidoso, NM  
Weekend Edition, FM  
People's Pharmacy, FM

**Atwood, Malone, Turner & Sabin**

Attorneys at Law  
Roswell, NM  
Evening Symphony, FM  
All Things Considered, FM

**Penasco Valley Telecommunications**

With Good Reason, Car Talk,  
Mountain Stage  
FM

**Hawyer Operating Company**

Roswell, NM  
American Experience,  
Masterpiece,  
Nova, PBS NewsHour

**This space could be yours!**

For Underwriting opportunities, please call toll-free (888) 367-5369. Ask for Rena for TV, Amie for FM

**NMDA**  
New Mexico Department of Agriculture

Las Cruces, NM  
America's Heartland

**This space could be yours!**

For Underwriting opportunities, please call toll-free (888) 367-5369. Ask for Rena for TV, Amie for FM

**Roosevelt County Electric Cooperative**

Portales, NM  
Antiques Roadshow

**This space could be yours!**

For Underwriting opportunities, please call toll-free (888) 367-5369. Ask for Rena for TV, Amie for FM

**CHAVES COUNTY FARM AND LIVESTOCK BUREAU**

Dexter and Roswell, NM  
America's Heartland

## When to watch from *A to Z* Channel 3-1 – January 2018

**Age Wise** – Tuesday, 2nd, 10:30 a.m.

**Amanpour on PBS** –

Monday-Friday, 5:00 p.m./10:00 p.m. (no late play on 1st, 5th, 26th)

**American Experience** –

“Influenza” – Tuesday, 2nd, 7:00 p.m.; Wednesday, 3rd, 2:00 p.m.

“Into the Amazon”- Tuesday, 9th, 7:00 p.m.;

Wednesday, 10th, 2:00 p.m.

“Secret of Tuxedo Park” – Tuesday, 16th, 7:00 p.m.;

Wednesday, 17th, 2:00 p.m.

“Andrew Carnegie” – Tuesday, 30th, 7:00 p.m.;

Wednesday, 31st, 2:00 p.m.

**American Woodshop** – Wednesdays, 10:00 a.m.

**America's Heartland** – Mondays, 4:00 p.m.; Fridays, 6:00 a.m.

**America's Test Kitchen** – Wednesdays, 4:30 p.m.

**Antiques Roadshow** –

Mondays, 8:00 p.m.; Tuesdays 6:00 a.m./1:00 p.m.;

Thursdays, 8:00 a.m.; Saturdays, 6:00 p.m.

**Asian American Life** – Fridays, 4:30 p.m.

**Ask This Old House** – Saturdays, 11:30 a.m.; 1:00 p.m.

**Austin City Limits** – Saturdays, 10:00 p.m.;

Sundays, 11:00 p.m. (11:30 p.m. on 21st & 28th)

**Beauty of Oil Painting** – Fridays, 10:30 a.m.

**Beyond Geek** – Thursdays, 3:30 p.m. (except 11th)

**Bluegrass Underground** – Fridays, 8:00 a.m.;

Sundays, 10:30 p.m. (except 21st, 28th)

**Chef's Life** – Saturdays, 2:30 p.m.; Thursdays, 12:30 p.m.

**Christopher Kimball's Milk Street Television** –

Thursdays, 12:00 noon

**Classical Stretch** – Monday-Friday, 5:00 a.m. / 11:00 a.m.

**Closer to Truth** – Tuesdays, 10:00 a.m.

**Consuelo Mack WealthTrack** – Tuesdays, 4:00 p.m.;

Wednesdays, 6:00 a.m.

**Cook's Country** – Wednesdays, 12:30 p.m.

**Craftsman's Legacy** – Wednesdays, 9:00 a.m.

**Creative Living** – Thursdays, 9:00 p.m.

**Crossing South** – Wednesdays, 7:30 a.m./1:30 p.m.

**David Rubenstein Show: Peer to Peer Conversations** –

Wednesdays, 6:30 a.m. (ends 24th)

**Daytripper** – Mondays, 4:30 p.m.

**Ellie's Real Good Food** – Thursdays, 1:00 p.m.

**Fall and Rise of Reginald Perrin** – Sundays, 5:30 p.m.

**Family Ingredients** – Wednesdays, 1:00 p.m.

**Family Travel with Colleen Kelly** – Thursdays, 6:30 a.m.

**Finding Your Roots** – Wednesdays, 7:00 p.m. (ends 17th);

Thursdays, 7:00 a.m./2:00 p.m. (ends 18th)

**Fons & Porter's Love of Quilting** – Thursdays, 9:00 a.m.

**Frontline** – Fridays, 9:00 p.m. (except 12th)

**Garden Smart** – Sundays, 2:00 p.m.; Fridays, 6:30 a.m.

**Globe Trekker** – Fridays, 9:00 a.m./3:00 p.m.; Saturdays, 4:00 p.m.

**Great British Baking Show** – Sundays, 3:00 p.m.;

Mondays, 12:00 noon

**Growing Bolder** – Wednesdays, 6:30 a.m. (begins 31st)

**Healthy Body, Healthy Mind** – Tuesdays, 9:00 a.m.;

Fridays 4:00 p.m.

**Healthy Minds** – Tuesdays, 10:30 a.m. (begins 23rd)

**IQ: Smartparent** – Thursdays, 6:00 a.m.

**Jacques Pepin: Heart & Soul** – Tuesdays, 12:00 noon

**Jazzy Vegetarian** – Mondays, 10:30 a.m.



## Channel 3-1 Continued

**Joy of Painting** – Fridays, 10:00 a.m.  
**Julia Child: Cooking with the Master Chefs** – Saturdays, 11:00 a.m.  
**Knit and Crochet Now!** – Thursdays, 10:00 a.m.  
**Lidia's Kitchen** – Wednesdays, 4:00 p.m.  
**Make it Artsy** – Fridays, 1:00 p.m.  
**Market to Market** – Sundays, 1:30 p.m.  
**Martha Bakes** – Saturdays, 3:30 p.m.  
**Martha Stewart's Cooking School** – Saturdays, 3:00 p.m.  
**Masterpiece** –  
    **"Victoria Season 1"** –  
        Sunday, 7th, 6:00 p.m./7:00 p.m./8:00 p.m. (3 back-to-back);  
        Monday, 8th, 1:00 p.m./2:00 p.m./3:00 p.m. (3 back-to-back);  
        Episodes repeat Mondays at 1:00 p.m. and the following  
        Sunday at 6:00 p.m.  
    **"Victoria Season 2"** – Begins Sunday, the 14th at 7:00 p.m. and  
    moves to 8:00 p.m. the next week. All episodes repeat Mondays  
    at 1:00 p.m. and the following Sunday at 6:00 p.m.  
**Mind of a Chef** – Sundays, 2:30 p.m.; Wednesdays, 3:30 p.m.  
**Motorweek** – Saturdays, 1:30 p.m.  
**Moveable Feast with Fine Cooking** – Thursdays, 1:30 p.m.  
**Music Voyager** – Wednesdays, 3:00 p.m. (except 10th);  
    Fridays, 8:30 a.m.  
**My Greek Table** – Mondays, 8:30 a.m.  
**Nature** – Wednesdays, 9:00 p.m.; Mondays, 6:00 a.m.  
**New Orleans Cooking with Kevin Belton** – Mondays, 9:30 a.m.  
**Nightly Business Report** – Monday-Friday, 5:30 p.m./10:30 p.m.  
**Nova** – Thursdays, 4:00 p.m. (3:00 p.m. on 11th); Fridays, 8:00 p.m.;  
    Saturdays, 11:00 p.m.; Sundays, 4:00 p.m. (except 14th)  
**P. Allen Smith's Garden to Table** – Mondays, 10:00 a.m.  
**Pati's Mexican Table** – Mondays, 9:00 a.m.  
**PBS Newshour** – Monday-Friday, 6:00 p.m./11:00 p.m.  
**PBS Newshour: Weekend** – Saturdays, 5:00 p.m.  
**Quilt in a Day** – Thursdays, 9:30 a.m.  
**Red Green Show** – Thursdays, 8:00 p.m.  
**Report from Santa Fe** – Saturdays, 5:30 p.m.  
**Rick Steves' Europe** – Mondays, 8:00 a.m.  
**Roadtrip Nation** – Mondays, 3:00 p.m. (except 8th)  
**Rough Cut** – Wednesdays, 9:30 a.m.  
**Rudy Maxa's World** – Wednesday, 3rd, 7:00 a.m.  
**Samantha Brown's Places to Love** –  
    Wednesdays, 7:00 a.m. (begins 10th)  
**Sara's Weeknight Meals** – Wednesdays, 12:00 noon  
**Science Goes to the Movies** – Thursdays, 3:00 p.m. (except 11th)  
**Scully/World Show** – Sundays, 1:00 p.m.  
**Second Opinion** – Tuesdays, 9:30 a.m.  
**Sew It All** – Thursdays, 10:30 a.m.  
**Sit and Be Fit** – Monday/Wednesday/Friday, 11:30 a.m.  
**Song of the Mountains** – Thursdays, 7:00 p.m.; Fridays, 7:00 a.m.  
**Speakeasy** – Saturdays, 9:00 p.m. (ends 13th)  
**Sportslook** – Thursdays, 8:30 p.m. (begins 25th)  
**Start Up** – Sundays, 12:30 p.m.; Tuesdays, 4:30 p.m.  
**Taste of History** – Tuesdays, 12:30 p.m.  
**This Old House** – Saturdays, 12:00 noon, 12:30 p.m.  
**This Old House Hour** – Fridays, 12:00 noon  
**Today's Wild West** – Sundays, 12:00 noon (begins 7th)  
**To the Contrary** – Sundays, 11:30 a.m.  
**Wai Lana Yoga** – Monday-Friday, 5:30 a.m.;  
    Tuesday/Thursday, 11:30 a.m.  
**Washington Week** – Fridays, 7:00 p.m.; Sundays, 11:00 a.m.  
**Welcome to My Studio** – Fridays, 1:30 p.m.  
**We'll Meet Again** – Wednesdays, 7:00 p.m. (begins 24th);  
    Thursdays, 7:00 a.m./2:00 p.m. (begins 25th)  
**Well Read** – Sundays, 5:00 p.m.  
**Woodsongs** – Fridays, 2:00 p.m.  
**Woodwright's Shop** – Wednesdays, 10:30 a.m.; Saturdays, 2:00 p.m.

## January 3-1 Specials

**88 Days in the Mother Lode: Mark Twain Finds His Voice** –  
    Wednesday, 10th, 8:00 a.m.; Tuesday, 30th, 9:00 p.m.  
**After Ebola: Preparing for a Pandemic** – Monday, 29th, 9:00 p.m.;  
    Tuesday, 30th, 8:00 a.m./3:00 p.m.

**Alan Cumming Sings Sappy Songs** – Saturday, 6th, 8:00 p.m.  
**All-Star Orchestra (4 Pts.)** –  
    Mondays, 7:00 a.m. (begins 1st, ends 22nd)  
**American Masters "Lorraine Hansberry"** – Saturday, 20th, 7:00 p.m.  
**Aurora – Fire in the Sky** – Sunday, 14th, 4:00 p.m.  
**Becoming Albertan** – Thursday, 11th, 8:30 p.m.  
**Between Earth and Sky: Climate Change on the Last Frontier** –  
    Tuesday, 2nd, 9:00 p.m.  
**Changing Seas (4 Pts.)** – Mondays, 3:30 p.m. (begins 15th);  
    Wednesdays, 8:30 p.m. (begins 17th)  
**Cobblestone Corridor** – Thursday, 4th, 8:30 p.m. (end)  
**Defending the Fire** – Wednesday, 3rd, 8:00 p.m.;  
    Tuesday, 23rd, 7:00 p.m.; Wednesday, 24th, 2:00 p.m.  
**Elder Abuse and Exploitation** – Thursday, 4th, 9:30 p.m.  
**Eric Idle's The Entire Universe** – Monday, 1st, 2:00 p.m.  
**Georgia O'Keeffe: A Woman on Paper** – Thursday, 11th, 9:30 p.m.  
**Great Performances** –  
    **"From Vienna: The New Year's Celebration"** –  
        Monday, 1st, 9:00 p.m.; Tuesday, 2nd, 7:00 a.m.  
    **"Tony Bennett & Lady Gaga: Cheek to Cheek Live!"** –  
        Saturday, 6th, 7:00 p.m.  
**Great Performances at the Met "Norma"** – Saturday, 27th, 7:00 p.m.  
**Grey Ambition** – Tuesday, 9th, 10:30 a.m.  
**Grey Glory** – Tuesday, 16th, 10:30 a.m.  
**Independent Lens** –  
    **"The Untold Tales of Armistead Maupin"** – Sunday, 7th, 9:00 p.m.  
    **"Unrest"** – Sunday, 14th, 9:00 p.m.  
    **"I Am Not Your Negro"** – Sunday, 21st, 10:00 p.m.  
    **"The Force"** – Sunday, 28th, 10:00 p.m.  
**March** – Monday, 15th, 7:00 p.m.; Tuesday, 16th, 7:00 a.m./2:00 p.m.  
**Migrant Kitchen (5 Pts.)** – Wednesdays, 8:00 p.m. (begins 10th)  
**Mystery of Chaco Canyon** – Monday, 22nd, 7:00 p.m.;  
    Tuesday, 23rd, 7:00 a.m./2:00 p.m.  
**Nasario Remembers the Rio Puerco** – Tuesday, 16th, 8:00 p.m.;  
    Wednesday, 17th, 8:00 a.m.  
**New Mexico Masterpieces** – Monday, 1st, 7:00 p.m.;  
    Tuesday, 2nd, 2:00 p.m.  
**Oh, My Aching Back! Prevention and Treatment** –  
    Tuesday, 2nd, 8:30 a.m.  
**Our Stories (New Mexico Soldiers): Vietnam (3 Pts.)** –  
    Tuesdays, 9:00 p.m. (begins 9th)  
**Paving the Way: The National Park-to-Park Highway (2 Pts.)** –  
    Tuesdays, 8:00 p.m. (begins 23rd);  
    Wednesdays, 8:00 a.m. (begins 24th)  
**Queen Elizabeth's Secret Agents (3 Pts.)** –  
    Sundays at 9:00 p.m. (begins 28th);  
    Mondays at 7:00 a.m./2:00 p.m. (begins 29th)  
**Right to Risk: A 15 Day Journey Through Arizona's Grand Canyon** –  
    Monday, 15th, 9:00 p.m.  
**Saving the Swamp: Battle to Defeat the Jetport** –  
    Tuesday, 2nd, 8:00 p.m.; Wednesday, 3rd, 8:00 a.m.  
**Secrets of the Dead "Scanning the Pyramids"** – Saturday, 27th, 11:00 p.m.  
**Selling Sunshine: The Florida Trains** –  
    Tuesday, 9th, 8:00 a.m./3:00 p.m.  
**Storm of the Century: The Blizzard of '49** – Monday, 8th, 9:00 p.m.;  
    Tuesday, 16th, 8:00 a.m./3:00 p.m.  
**Streets of Wynwood** – Saturday, 20th, 9:00 p.m.  
**Suffragettes Forever! The Story of Women and Power (3 Pts.)** –  
    Mondays, 7:00 p.m. (begins 29th);  
    Tuesdays, 7:00 a.m./2:00 p.m. (begins 30th)  
**Symphony for Nature: The Britt Orchestra at Crater Lake** –  
    Saturday, 13th, 8:30 p.m.; Thursday, 25th, 9:30 p.m.  
**Tony Bennett: Library of Congress Gershwin Prize for Popular  
Song** – Saturday, 13th, 7:00 p.m.  
**True North: The Sean Swarner Story** – Monday, 8th, 7:00 p.m.;  
    Tuesday, 9th, 7:00 a.m./2:00 p.m.  
**Understanding the Opioid Epidemic** – Monday, 22nd, 9:00 p.m.;  
    Tuesday, 23rd, 8:00 a.m./3:00 p.m.  
**Wheels of Yesteryear: Touring with the Tin Lizzies** –  
    Thursday, 18th, 9:30 p.m.  
**When I'm 65** – Tuesday, 2nd, 3:00 p.m.  
**Working Lands: A History of Agriculture in Nevada** –  
    Thursday, 18th, 8:30 p.m.



Reginald Perrin (Leonard Rossiter)

## *The Fall and Rise of Reginald Perrin*

In this 21-part BBC Britcom, Reginald “Reggie” Iolanthe Perrin is a middle-aged middle manager at Sunshine Desserts who is suffering from a mid-life crisis. He lives at 12 Coleridge Close, part of the “Poets Estate” in south London, a development different from those around it



only by having the streets named after famous poets.

Each morning, Reggie arrives at Sunshine Desserts eleven minutes late and gives a different excuse, an escaped puma being one of the less plausible ones.

The pointlessness of Reggie’s job drives him to reckless and bizarre behavior, like getting out of his car in a lion enclosure at a safari park.

Leaving his monotonous life behind, Reggie fakes his own suicide. All that is left is a neat pile of clothes on the beach. Could spending his days looking after pigs be an improvement?

*Saturdays at 8:00 p.m. begins the 6th (3-2)*

*Sundays at 5:30 p.m. begins the 7th (3-1)*