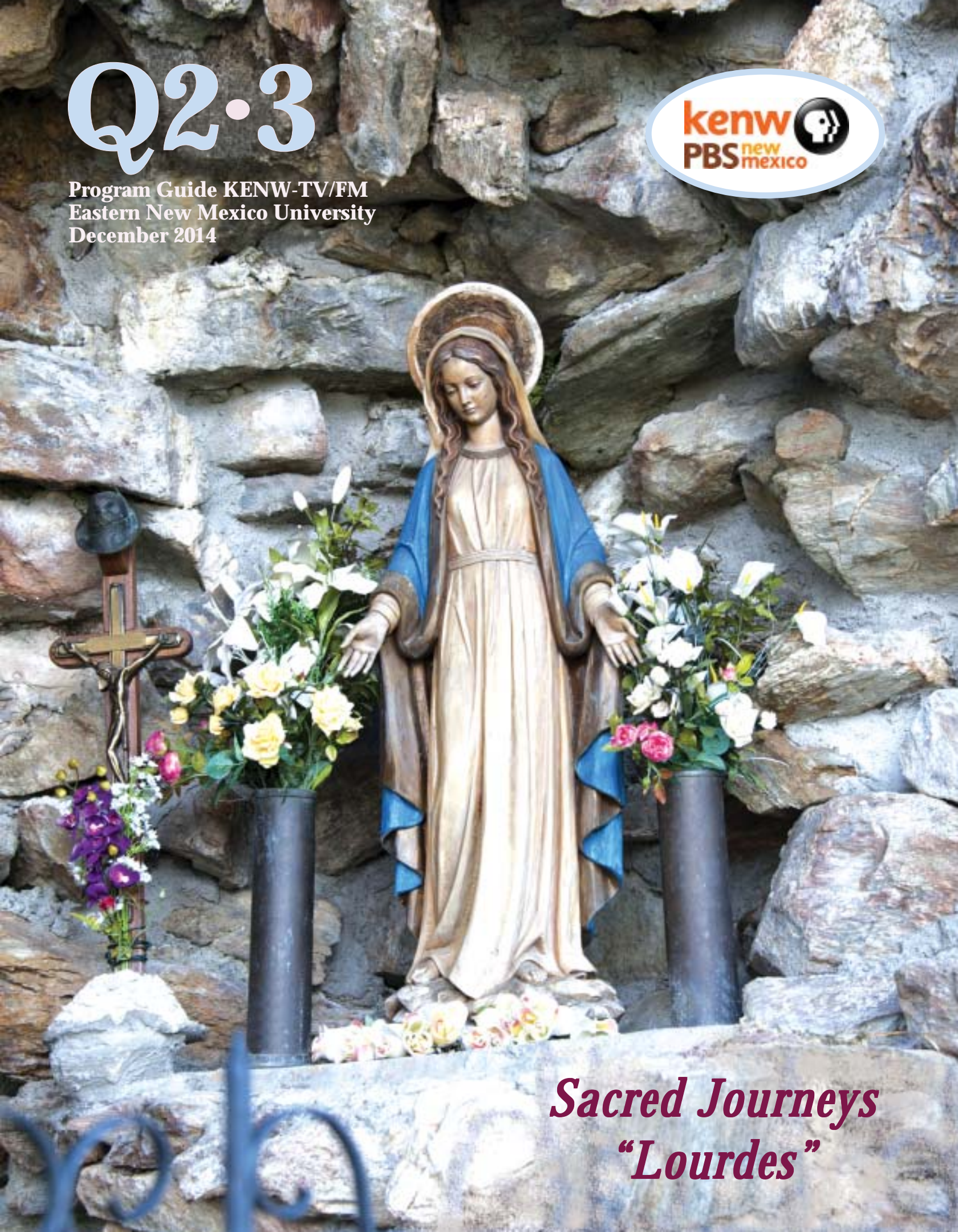


Q2.3

Program Guide KENW-TV/FM
Eastern New Mexico University
December 2014



Sacred Journeys
“Lourdes”

When to watch from *A to Z* Channel 3-2 – December 2014

A to Z listings for Channel HD3-1 are on pages 18 & 19

All Aboard – Mondays, 10:00 p.m. (except 1st, 22nd);
Sundays, 1:30 p.m. (except 7th)

American Woodshop – Saturdays, 6:30 a.m.;
Thursdays, 11:00 a.m.

America's Heartland – Saturdays, 6:30 p.m. (except 6th)

America's Test Kitchen – Saturdays, 8:00 a.m.; Mondays, 11:00 a.m.

Antiques Roadshow – Mondays, 7:00 p.m./8:00 p.m./11:00 p.m.
(no 11:00 p.m. play on 1st); Sundays, 7:00 a.m.

Ask This Old House – Saturdays, 4:00 p.m.

Austin City Limits – Saturdays, 9:00 p.m. (except 6th)/12:00 midnight

BBC Newsnight – Fridays, 5:00 p.m.

BBC World News – Monday–Friday, 6:30 a.m./4:30 p.m.

Beads, Baubles and Jewels – Mondays, 12:30 p.m.

Beauty of Oil Painting – Fridays, 12:30 p.m.;
Saturdays, 12:00 noon (except 6th)

Charlie Rose – Tuesday–Thursday, 11:00 p.m. (except 23rd, 30th)

Charlie Rose: The Week – Fridays, 8:30 p.m. (except 5th);
Mondays, 5:00 p.m.

Christina Cooks – Saturdays, 8:30 a.m.

Classic Art Showcase – Sunday–Saturday, 1:00 a.m.–6:00 a.m.

Classic Gospel – Sundays, 8:00 a.m./4:00 p.m. (except 7th)

Classical Stretch – Monday through Friday, 6:00 a.m.

Closer to Truth – Sundays, 2:00 p.m. (except 7th)

Consuelo Mack WealthTrack – Fridays, 7:30 p.m.

Cook's Country from America's Test Kitchen –
Saturdays, 7:30 a.m.; Mondays, 11:30 a.m.

Creative Living – Tuesdays/Thursdays, 12:00 noon;
Tuesdays, 9:30 p.m. (except 2nd); Saturdays, 2:00 p.m. (except 20th)

Cultura – Sundays, 12:00 noon (14th, 28th only)

Getting Away Together – Sundays, 6:00 a.m.

Fit 2 Stitch – Tuesdays, 12:30 p.m.; Saturdays, 5:30 p.m.

Focus on Europe – Thursdays, 5:00 p.m.

Fons & Porter's Love of Quilting – Saturdays, 1:30 p.m.;
Wednesdays, 12:30 p.m.

Frontline – Tuesdays, 10:00 p.m.; Thursdays, 7:00 p.m.
"The Madoff Affair" – 9th, 11th
"From Jesus to Christ: The First Christians (2 2-hr. Pts) –
23rd, 25th (Pts. 1 & 2 both dates); 30th, Jan. 1st (Pts. 3 & 4 both
dates)

Globe Trekker – Sundays, 11:00 a.m. (except 7th)

Good Neighbors – Saturdays, 8:30 p.m. (except 6th)

Healthy Body/Mind – Sundays, 3:00 p.m. (except 7th)
Wednesdays, 10:00 p.m. (except 3rd)

Hometime – Saturdays, 3:00 p.m.

In Focus – Sundays, 12:30 p.m. (except 7th)

Jazzy Vegetarian – Saturdays, 9:00 a.m.

Joy of Music – Sundays, 9:00 a.m./9:30 a.m.

Joy of Painting – Saturdays, 11:30 a.m. (except 6th)

Jubilee – Thursdays, 10:00 p.m. (except 4th)

Knitting Daily – Tuesdays, 11:30 a.m.

Lawrence Welk Show – Saturdays, 7:00 p.m. (except 6th)

Market to Market – Fridays, 7:00 p.m.

Martha Stewart's Cooking School – Saturdays, 2:30 p.m.;
Tuesdays, 11:00 a.m.

Masterpiece Classic "Downton Abbey 4" –
Episode 1 – Sunday, 7th, 8:00 p.m. .
Episode 2 – Sunday, 7th, 10:00 p.m.
Episode 3 – Sunday, 14th, 8:00 p.m.
Episode 4 – Sunday, 14th, 9:00 p.m.
Episode 5 – Sunday, 14th, 10:00 p.m.
Episode 6 – Sunday, 21st, 8:00 p.m.
Episode 7 – Sunday, 21st, 9:00 p.m.
Episode 8 – Sunday, 28th, 8:00 p.m. (Season 5 begins January 4th)

McLaughlin Group – Sundays, 5:30 p.m. (except 7th)

Motorweek – Saturdays, 9:30 a.m.

Moyers & Company – Sundays, 6:00 p.m. (except 7th)

Nature – Wednesdays, 7:00 p.m. (except 3rd, 31st);
Saturdays, 11:00 p.m. (except 6th)

New Fly Fisher – Wednesdays, 11:00 a.m.

New Mexico Colores – Sundays, 12:00 noon (21st only)

News 3 New Mexico – Wednesday–Friday, 5:00 pm. (ends 5th)

Nightly Business Report – Monday–Friday, 5:30 p.m.

Nova – Wednesdays, 8:00 p.m. (except 4th, 31st; also at 9:00 p.m. on
17th, 24th); Saturdays, 10:00 p.m. (except 6th);
Sundays, 12:00 midnight (except 7th)

P. Allen Smith's Garden Home – Saturdays, 10:00 a.m. (except 6th)

Paint This with Jerry Yarnell – Saturdays, 11:00 a.m. (except 6th)

PBS NewsHour – Monday–Friday, 6:00 p.m./12:00 midnight

PBS NewsHour: Weekend – Sundays, 5:00 p.m. (except 7th)

Peregrine Dame – Mondays, 10:30 p.m. (ends 1st)

Quilt in a Day – Saturdays, 12:30 p.m.

Red Green Show – Thursdays, 9:30 p.m. (except 4th)

Religion/Ethics – Sundays, 3:30 p.m.; (except 7th);
Wednesdays, 5:00 p.m.

Report from Santa Fe – Saturdays, 6:00 p.m.

Rick Steve's Europe – Mondays, 10:30 p.m. (begins 8th)

Rough Cut IV – Saturdays, 7:00 a.m.

Scully/The World Show – Tuesdays, 5:00 p.m.

Second Opinion – Sundays, 6:30 a.m.

Sewing with Nancy – Saturdays, 5:00 p.m.

Sit and Be Fit – Monday, Wednesday, Friday, 12:00 noon

Song of the Mountains – Thursdays, 8:00 p.m. (11th, 18th only)

Star Gazers – Wednesdays, 11:57 p.m.; Saturdays, 10:57a.m./9:57 p.m.;
Sundays, 2:57 p.m./11:57 p.m.; Mondays, 10:27 p.m.

Taste of History VI – Thursdays, 11:30 a.m.

This Old House – Saturdays, 3:30 p.m.;
Wednesdays, 10:30 p.m. (except 3rd)

To the Manor Born – Saturdays, 8:00 p.m. (except 6th)

Victory Garden – Saturdays, 10:30 a.m. (except 6th)

Washington Week – Fridays, 8:00 p.m.

Welcome to My Studio – Thursdays, 12:30 p.m.;
Saturdays, 4:30 p.m.

Well Read – Sundays, 2:30 p.m. (except 7th)

Woodturning Workshop – Wednesdays, 11:30 a.m.;
Saturdays, 6:00 a.m.

You Should Know – Tuesdays, 9:00 p.m. (except 2nd)

Special Programs

50 Years with Peter, Paul & Mary – Monday, 1st, 8:30 p.m.;
Saturday, 6th, 8:30 p.m.

Age of Delirium (rise & fall of the Soviet Union) – Sunday, 14th, 11:00 p.m.

Aging Backwards with Miranda Esmonde-White –
Saturday, 6th, 10:00 a.m.

American Masters –
"Bing Crosby Rediscovered" – Tuesday, 2nd, 8:30 p.m.;
Friday, 26th, 10:00 p.m.
"Harper Lee: Hey Boo" – Saturday, 6th, 10:30 p.m.

Angels – Friday, 12th, 10:30 p.m.; Thursday, 25th, 10:00 p.m.

Best of Birds, A Nature Special – Wednesday, 3rd, 10:00 p.m.

Buddha – Sunday, 7th, 11:00 p.m.

Christmas on the Danube – Friday, 12th, 11:30 p.m.;
Thursday, 18th, 9:00 p.m.

Christmas with the Mormon Tabernacle Choir – Friday, 19th, 9:00 p.m.

Crisis of Faith – Thursday, 11th, 9:00 p.m.; Sunday 21st, 11:30 p.m.

Don't Worry, Retire Happy – Wednesday, 3rd, 7:00 p.m.;
Sunday, 7th, 5:00 p.m.

Dunlap and Pennington (pianists) – Sunday, 28th, 10:00 p.m.

European Christmas Markets – Tuesday, 2nd, 10:30 p.m.;
Friday, 5th, 11:30 p.m.

Expeditions with Patrick McMillan – Sundays, 6:30 p.m. (except 7th)

Finding Your Roots II – Sundays, 10:00 a.m. (ends 7th)

First Silent Night – Sunday, 14th, 10:00 a.m.; Monday, 22nd, 9:00 p.m.

Forensics: Beyond the CSI Effect – Friday, 26th, 11:30 p.m.

God's Greatest Hits – Thursday, 25th, 9:00 p.m.

Great Performances "Encores! Great Performances at the Met" –
Saturday, 6th, 6:30 p.m.



Q2·3 Program Guide

THE MAGAZINE FOR THE FRIENDS OF PUBLIC BROADCASTING DECEMBER 2014

Q2-3 Program Guide is published each month by the Broadcast Center, a non-profit public service division of Eastern New Mexico University.

Q2-3 Program Guide (Cue to 3) is available to friends contributing \$35 per year or more to the support of public broadcasting. Senior Citizen and Student memberships are available for \$25. All contributions are tax deductible. Donations should be made payable to Friends of **KENW-TV** or to Friends of **KENW-FM** or **KMTH-FM**.

KENW-TV, Channel 3, can be seen on UHF TV analog translators in the following areas:

Carlsbad - Channel 49; Ruidoso - Channel 49
Tucumcari - Channel 32; Ft. Sumner - Channel 34.

KENW-TV digital transmitters are located in: Artesia; Carlsbad; Ft. Sumner; Hobbs; Portales/Clovis; Roswell; Tucumcari; Ruidoso.

KENW-FM, 89.5 MHz, Portales; **KMTH-FM**, 98.7 MHz, Maljamar; **KENM-FM**, 88.9 MHz, Tucumcari; **NM; KENU-FM**, 88.5 MHz, Des Moines, NM; **KENG-FM**, 88.5 MHz; Ruidoso, NM; **KENE-FM**, 88.1 MHz, Raton, and FM translators in:

Apache Springs - 90.9 MHz
Clayton - 93.5 MHz
Des Moines - 106.1 MHz
Ft. Sumner - 91.7 MHz
Las Vegas - 107.1 MHz
Midland, TX - 99.5 MHz
Roswell - 91.1 MHz
Ruidoso - 89.3 MHz
Wagon Mound - 92.1 MHz

Telephone: From Cannon A.F.B., Clovis, Portales, and Roosevelt County, call (575) 562-2112.

Others, call toll-free 1-888-FOR-KENW (367-5369).

Mailing Address:

KENW-TV/FM
52 Broadcast Center, ENMU
1500 South Avenue K
Portales, NM 88130

Web site: www.kenw.org

E-Mail: kenwtv@enmu.edu — kenwfm@enmu.edu

Fax: (575) 562-2590

4. **Sacred Journeys**, a six-part series, takes viewers to six sacred sites around the world that are cherished by billions and visited annually by hundreds of millions of pilgrims. In **Joshua Bell Presents Musical Gifts**, the renowned violinist welcomes viewers into his elegant Manhattan residence for a rare and intimate concert.

The First Silent Night journeys to the Austrian village of Oberndorf as well as the city of Salzburg to tell the story of where and how the world's favorite carol had its origins. **"Curtain Up: The School of American Ballet Workshop Performances"** on **Live From Lincoln Center** offers a close-up look at the ballet stars of tomorrow.

5. **Rickover: The Birth of Nuclear Power** profiles the flamboyant maverick who created the nuclear navy as well as the civilian nuclear power industry.

In **Tales from the Royal Bedchamber**, host Lucy Worsley examines the huge expense and increasingly lavish design of Royal State beds—beds which were never slept in.

Wallis Simpson: The Secret Letters reports on the discovery of secret letters hidden in an English attic that have the power to rewrite history.

Matt Damon narrates **Journey to Planet Earth: Extreme Realities**, which explores the unexpected national security consequences of severe weather climate change.

In **The Heiress and Her Chateau: Carolands of California**, one of the richest women in the world builds the most fabulous house west of the Mississippi, a dramatic tale that includes wealth and ruin, love and loss, a murder, and a few earthquakes.

6. The angelic Jackie Evancho returns to PBS with her latest collection of songs, in **Jackie Evancho – Awakening – Live in Concert**.

Trains Around North America visits 17 of North America's premiere railways, including the Texas State RR and the Rio Grande Scenic RR.

American Masters presents **"Bing Crosby Rediscovered,"** which explores the life and legend of the most popular star of the first half of the 20th century.

JJ Virgin's Sugar Impact Secret is designed to revolutionize how viewers think about (and eat) sugar.

7. **50 Years with Peter, Paul and Mary** is a new documentary that focuses on portions of the trio's career not included in earlier PBS specials.

"First Man on the Moon" on **Nova** presents an intimate portrait of Neil Armstrong.

"Encore! Great Performances at the Met," a **Great Performances** presentation, features 19 unforgettable arias and duets selected from the past eight seasons.

New self-help specials include **Wheat Belly Total Health**, which suggests that wheats and grains are the cause of many chronic health issues, and **Don't Worry, Be Happy!** which outlines seven steps to retirement security.

A Tribute to Bruce Springsteen features guest performers Patti Scialfa, Zac Brown, Mavis Staples, John Legend, and others.

Q2·3 Program Guide Staff

Editor: Linda Stefanovic
Assistant Editor: Jenifer Baca
Program Log Descriptions: Karen Leonhardt
Printing: University Press

Eastern New Mexico University is an affirmative action and equal opportunity employer. The University does not discriminate on the basis of race, color, national origin, sex, or handicap in its programs, activities, or employment. Persons seeking additional information about the University's nondiscrimination policy should contact the Executive Director of Planning & Analysis, ENMU, Station #2, Portales, NM 88130.

Heiress and Her Chateau – Sunday, 21st, 10:30 p.m.;
Monday, 29th, 9:00 p.m.

Heirloom Meals Christmas – Tuesday, 16th, 10:00 p.m.;
Saturday, 20th, 2:00 p.m.

Independent Lens "All of Me: A Story of Love, Loss, and Last Resorts" – Monday, 8th, 9:00 p.m.

Jackie Evancho – Awakening – Live in Concert –
Sunday, 7th, 6:30 p.m.

JJ Virgin's Sugar Impact Secret – Sunday 7th, 2:00 p.m.

Joshua Bell Presents Musical Gifts Sunday, 14th, 7:00 p.m.;
Sunday, 21st, 10:00 a.m.

Journey to Planet Earth "Extreme Realities: Severe Weather, Climate Change, and Our National Security" –
Monday, 15th, 9:00 p.m.; Thursday, 18th, 7:00 p.m.

Live From Lincoln Center "Curtain Up: The School of American Ballet Workshop Performances" – Friday, 12th, 9:00 p.m.
"Gershwin Celebration at the New York Philharmonic" –
Wednesday, 31st, 7:00 p.m.

Michael Feinstein's New Year's Eve at the Rainbow Room –
Wednesday, 31st, 9:00 p.m.

Nazi Mega Weapons "U-Boat Base" – Wednesday, 10th, 9:00 p.m.

Nova "First Man on the Moon" – Wednesday, 3rd, 8:30 p.m.

Pioneers of Television "Carol Burnett and the Funny Ladies" –
Thursday, 4th, 10:30 p.m.

Rickover: The Birth of Nuclear Power – Tuesday, 9th, 7:00 p.m.;
Friday, 19th, 10:00 p.m.

Sacred Journeys (6 Pts.) – Tuesdays, 16th–30th, 7:00 p.m./8:00 p.m.
(2 episodes per night); Sundays, 10:00 a.m. (begins 28th)

Skinny Gut Vibrant You – Tuesday, 2nd, 7:00 p.m.

Surviving Prostate Cancer – Sunday, 7th, 3:30 p.m.

Tales from the Royal Bedchamber – Sunday, 21st, 7:00 p.m.;
Friday, 26th, 10:30 p.m.

Tracks of Imagination – Monday, 22nd, 10:00 p.m.

Trains Around North America – Thursday, 4th, 7:00 p.m.;
Sunday, 7th, 11:00 a.m.

Tribute to Bruce Springsteen – Friday, 5th, 8:30 p.m.

Victor Borge's Timeless Comedy – Thursday, 4th, 10:00 p.m.

Wallis Simpson: The Secret Letters –
Sunday, 28th, 7:00 p.m./11:00 p.m.

Wheat Belly Total Health – Saturday, 6th, 11:00 a.m.

Why Quilts Matter: History, Art & Politics (9 Pts.) –
Saturdays, 1:00 p.m.

SACRED JOURNEYS

Sacred Journeys is a compelling look at the future of faith through six epic pilgrimages. Host Bruce Feiler and contemporary sojourners journey to sacred sites cherished by billions and visited annually by hundreds of millions of pilgrims.

Lourdes – Feiler embeds with a group of active duty and retired US military, wounded in Afghanistan, Iraq, and other American wars, as they travel to the Catholic shrine of Lourdes in Southwest France in search of healing. More than five million pilgrims from around the world visit this shrine to the Virgin Mary every year to drink and bathe in the waters of a spring that Catholics believe has miraculous powers.

Shikoku – The Island of Shikoku in Japan is the birthplace of the most revered figure in Japanese Buddhism, the monk and teacher Kobo Daishi, who brought a populist form of Buddhism to Japan from China in the 9th Century. For hundreds of years, a 750-mile pilgrimage route has circled this mountainous island, connecting 88 separate temples and shrines that claim connection to the Great Master—Kobo Daishi. This Buddhist pilgrimage welcomes pilgrims of all faiths.

Jerusalem – Sukkot, or the Feast of the Tabernacles, is one of three great festivals in the Jewish calendar when, in ancient times, Jews from across Israel were commanded to come to the Temple in Jerusalem on pilgrimage. But although Jewish pilgrimage lessened in importance after the destruction of the Temple by the Romans in 62CD, Christian pilgrims began coming to Jerusalem and the Holy Land within centuries of Jesus' death. For many Christians, the road to Jerusalem begins in the Galilee along the Jesus Trail, a route that follows the path of Jesus' ministry.

The Hajj – Millions of pilgrims gather outside Mecca in today's Saudi Arabia to take part in the annual five-day Hajj

pilgrimage every Muslim hopes to complete at least once. In 622CE, Muhammad fled his birthplace of Mecca after persecution by its pagan rulers who objected to him preaching a new monotheism. Within ten years, Islam was the dominant religion of Arabia and Muhammad returned to Mecca in triumph to teach his followers the different stages of the Hajj pilgrimage.

Kumbh Mela – Every twelve years, tens of millions of men, women, and children from around the world gather on the flood plain of the Ganges and Yamuna Rivers in Allahabad, India, for the largest gathering of humanity for religious purposes on the planet. This is the Kumbh Mela, the great Hindu festival where pilgrims come to bathe in the water where two sacred rivers meet. Such mass bathing in the Ganges has been recorded for more than 2500 years.

Osun-Osoḡbo – This episode takes viewers to Nigeria with a group of African American pilgrims who are attending an annual festival in honor of the Yoruba Goddess Osun, as a way to reconnect with their cultural and spiritual roots. This indigenous African faith was first carried to the Americas during the Transatlantic Slave Trade where it evolved to become one of the ten largest religions in the world with upwards of 100 million practitioners. Forced underground during slavery, it is now growing in popularity across the U.S.

Sacred Journeys airs Tuesdays, the 16th–30th, at 7:00 p.m. and 8:00 p.m. (two episodes each night) on both 3-2 and HD3-1. On 3-2, the series repeats Sundays at 10:00 a.m. beginning the 28th. On HD3-1, it repeats Wednesdays at 6:00 a.m. and 12:00 noon (two episodes back-to-back at both times).

Joshua Bell Presents Musical Gifts

Joshua Bell welcomes cameras into his elegant Manhattan residence for a rare and intimate concert.



Joshua Bell Presents Musical Gifts recreates Bell's personal tradition of hosting friends and family at his home during the holidays.

The 10-song set list features holiday standards, including "An Old-Fashioned Christmas" with opera star Renee Fleming; "I'll Be Home for Christmas" with pianist and vocalist Frankie Moreno; Jimmy Van Heusen/Sammy Cahn's "The Secret of Christmas" with Michael Feinstein; "Let it Snow" with guitarist/violinist Rob Moose, a heartwarming rendition of "Silent Night; and more.

Joshua Bell Presents Musical Gifts can be seen Sunday, the 14th at 7:00 p.m. and Sunday, the 21st at 10:00 a.m.

The First Silent Night

The First Silent Night tells a story that begins in humble circumstances and ends with the creation of the world's most popular carol. This holiday special journeys to the Austrian village of Oberndorf as well as the city of Salzburg, where the story of the world's favorite carol had its origins.

For close to 200 years, one carol has occupied the heart of Christmas celebrations across the world. It has been translated into over 300 languages, performed by Symphony orchestras and celebrated international artists. No composition, in the history of carols, can be said to have united so many people in the meaning of Christmas.



The First Silent Night will be broadcast Sunday, the 14th at 10:00 a.m. and Monday, the 22nd at 9:00 p.m. On HD3-1, it airs Wednesday, the 3rd at 8:00 a.m. and 2:00 p.m.

Curtain Up:

The School of American Ballet Workshop Performances

For the first time on **Live From Lincoln Center**, the curtain rises on a new generation of ballet stars, at the School of American Ballet's 50th Annual Workshop Performances. The great George Balanchine saw the School as a springboard for his dazzling innovations, and the program reveals what it means for one dedicated group of students, rehearsing and performing in some of his most celebrated works.



"Curtain Up: The School of American Ballet Workshop Performances" offers a close-up look at the ballet stars of tomorrow, and demonstrates the continuing tradition of excellence fostered at this prestigious ballet academy.

"Curtain Up" on **Live From Lincoln Center** airs Friday, the 12th at 9:00 p.m. On HD3-1, it airs Saturday, the 13th at 7:00 p.m.

Rickover: The Birth of Nuclear Power

Combative and searingly blunt, Admiral Hyman G. Rickover was a flamboyant maverick, a unique American hero. Unafraid to buck the system, he alienated Navy brass, yet inspired the men under him. **Rickover: The Birth of Nuclear Power** profiles the man who created the nuclear navy, as well as the civilian nuclear power industry.



When few thought it possible, then Captain Rickover undertook a quest to harness the fearsome power of the atom to drive the first nuclear-powered submarine, the *USS Nautilus*, whose trip under the polar ice pack was one of the great adventure stories of the 1950s. Later, Rickover built the world's first commercial nuclear power plant in Pennsylvania. His achievements made him into a national celebrity.

Many questioned Rickover's goal of a nuclear navy, with its high price tag and unknown risks. However, few contested that he had transformed the Navy and much of U.S. industry and changed the course of America's technological development.

Rickover: The Birth of Nuclear Power airs Tuesday, the 9th at 7:00 p.m. and Friday, the 19th at 10:00 p.m. On HD3-1, it airs Tuesday, the 9th at 7:00 p.m. and Wednesday, the 10th at 6:00 a.m. and 12:00 noon.

Tales from the Royal Bedchamber

Lucy Worsley uncovers **Tales from the Royal Bedchamber**, and reveals that our obsession with royal bedrooms, births, and succession is nothing new. In fact, the rise and fall of their magnificent beds reflects the changing fortunes of the monarchy, itself.

It seems that the Royal bedchamber was once a very public sphere with huge political consequence. Not only was it the site for royal marriage ceremonies, but royal births were also traditionally observed there by a crowd in order to verify the baby's gender. As everyone felt that they had a stake in it, the process of creating royal babies often took place in a semi-public context as well.

Tales looks at the creation of private chambers as a reaction to the overwhelmingly public nature of royal bedrooms. The program also examines the increasingly lavish design of Royal State beds and the huge expense that went into these beds which were never slept in.

Tales from the Royal Bedchamber airs Sunday, the 21st at 7:00 p.m. and Friday, the 26th at 10:30 p.m. On HD3-1, it airs Sunday, the 21st at 7:00 p.m., Saturday, the 27th at 9:00 p.m., and Monday, the 29th at 11:00 a.m. and 4:30 p.m.



Wallis Simpson: The Secret Letters

For the past 75 years, Wallis Simpson has been cast as the scarlet woman of 20th century British history—the siren who seduced Edward VIII.



The king's desire to marry Simpson, an American woman with two living ex-husbands, nearly caused a constitutional crisis in the UK. When the Church of England restricted Edward from marrying a divorcee with a living ex-spouse, it led to his abdication in December 1936 so he could marry "the woman I love."

Wallis Simpson: The Secret Letters reports on the discovery of an extraordinary cache of 15 secret letters and diaries that were written by Simpson around the time of the abdication and hidden away in an attic in a house in the south of England.

These extraordinary personal letters have the power to rewrite history. They reveal Simpson was still deeply in love with her then husband, and they chart her fear, desperation, and loneliness as she found herself becoming trapped into marrying Edward.

Wallis Simpson: The Secret Letters airs Sunday, the 28th at 7:00 p.m. and 11:00 p.m. On HD3-1, it can be seen Sunday, the 28th at 9:00 p.m.

Journey to Planet Earth Extreme Realities

Matt Damon narrates **Extreme Realities: Severe Weather, Climate Change and Our National Security**, the latest episode of **Journey to Planet Earth**. The documentary travels from Afghanistan to the Arctic, from Bangladesh to Benin, and from Russia to the U.S. to explore the unexpected national security consequences of severe weather climate change.

In Afghanistan, for example, the only crop that can survive in the current severe drought conditions is the opium poppy. In return for a fee, the Taliban protect the illegal crop and find a steady supply of future recruits among the farmers' sons.

India is facing the prospect of millions of refugees from Bangladesh, where projected sea-level rise threatens to cover 60% of the country's low-lying farmland.

As the polar ice cap melts, governments are scrambling to carve up the now-accessible oil and gas reserves in the Arctic. Russia has aggressively pursued its claim and leaked documents indicate that Moscow isn't ruling out the possibility of armed conflict over this last frontier.

Journey to Planet Earth: Extreme Realities airs Monday, the 15th at 9:00 p.m. and Thursday, the 18th at 7:00 p.m. On HD3-1, it airs Monday, the 15th at 8:00 p.m. and Tuesday, the 16th at 7:00 a.m. and 1:00 p.m.

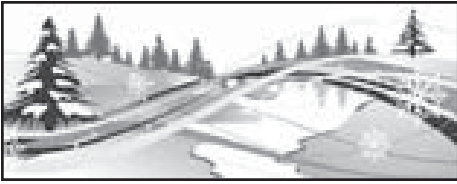
The Heiress and Her Chateau: Carolands of California

The Heiress and Her Chateau: Carolands of California is a 98-year saga of a 98-room mansion, a three-dimensional window into life among America's elite.

Chateau Carolands was built by one of the richest women in the world to be her ultimate dream home, but nothing went as planned. It was once the most fabulous house west of the Mississippi, and its story is a dramatic tale of wealth and ruin, love and loss, art and architecture—with a murder, and a couple of earthquakes along the way.

Meet the Heiress, the Countess, and the billionaire's wife—the women who built, loved, and preserved this architectural masterpiece for decades.

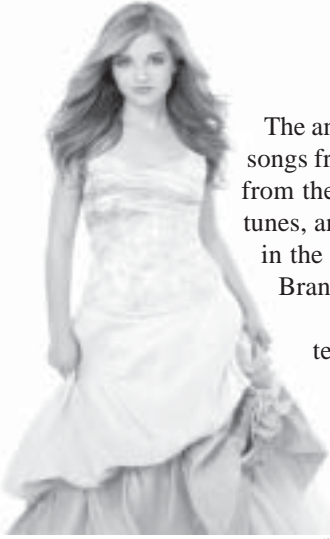
The Heiress and Her Chateau will be broadcast Sunday, the 21st at 10:30 p.m. and Monday, the 29th at 9:00 p.m.



Winterfest 2014

Nov 28th – Dec. 7th

Jackie Evancho – Awakening Live in Concert



The angelic Jackie Evancho returns to PBS with her latest collection of songs from her new CD, *Awakening*. Drawn from the best-known pieces from the classical canon, along with uplifting sacred music, Broadway tunes, and pop songs, Jackie’s astoundingly beautiful young voice soars in the magnificent setting of Longwood Gardens Open Air Theatre in Brandywine Creek Valley, Pennsylvania, the singer’s home state.

Jackie Evancho – Awakening – Live in Concert is the first television special ever permitted to be taped on site at Longwood. It features Jackie performing onstage and at other stunning locations throughout the gardens.

Cheyenne Jackson joins Jackie in a number of duets. Cheyenne, star of Broadway, film, and television, is well known for his award-winning Broadway performance in *Finian’s Rainbow*, his recurring role on NBC’s *30 Rock*, and his starring role in the HBO

Liberace biopic *Behind the Candelabra*.

Jackie Evancho – Awakening – Live in Concert airs Sunday, the 7th at 6:30 p.m.

JJ Virgin’s Sugar Impact Secret

Not all sugar is created equal. Most people know that sugar is bad for them, but few people know that sugar can actually be the real cause of inflammation, bloating, metabolic disorders, fatigue, and weight gain.

JJ Virgin’s Sugar Impact Secret revolutionizes how viewers think about (and eat) sugar. JJ Virgin shows viewers how to lower their sugar impact which helps retrain taste buds, restore sugar sensitivity, heal the digestive tract, and rev up the metabolism, turning sugar burners into fat burners.

Many of JJ’s clients have already tried depriving themselves. They don’t eat dessert, they’ve dumped the white flour, they stopped adding that spoonful of sugar to their coffee.

But after all that “healthy” low-calorie, low-fat eating, they end up with the same symptoms they’d get if they were eating a ton of sugar—weight gain, cravings, mood and energy swings, health issues like inflammation, high blood pressure, and insulin resistance.

So what is going on? The problem is, their healthy diets are packed with hidden sugars, and these sugars are not harmless. But the good news is when you ditch the hidden sugar, you’ll reverse stubborn symptoms, drop weight, and feel better fast. When digestion works right, skin glows, sleep patterns improve, and energy increases.

JJ Virgin’s Sugar Impact Secret will be broadcast Sunday, the 7th at 2:00 p.m.



Bing Crosby Rediscovered

Bing Crosby (May 3, 1903–October 14, 1977) was, without doubt, the most popular and influential multi-media star of the first half of the 20th century. For more than three decades, through radio, film, television, and records, he reigned supreme.

The new documentary, **American Masters** “Bing Crosby Rediscovered,” explores the life and legend of this iconic performer, revealing a man far more complex than his public persona.

Narrated by Stanley Tucci, the film features new interviews with members of Crosby’s immediate family—wife Kathryn, daughter Mary, and sons Harry and Nathaniel. Mary addresses accusations of abuse first published in Gary’s 1983 memoir, which tarnished their father’s legacy.

Thirty-seven years after his death, Crosby remains the most recorded performer in history, with nearly 400 hit



Trains Around North America

Today North America offers more railway adventures than anywhere else in the world. And **Trains Around North America** offers a taste of some of the best. From historic steam trains and streamliners, elegant dinner trains, to the most luxurious rail liner in North America.

By the time America entered the Civil War, there were more than 60,000 miles of railroad track in the United States, and by the turn of the century they ballooned to more than 190,000. Today the railroads that helped build the world around us are slowly disappearing. Nearly 60% of all track laid in North America has been abandoned or torn up.

Trains Around North America visits 17 of North America’s premiere tourist railroads. The 3-hour program introduces the men and women that help keep our railroad history alive and on the rails. Railroads featured include the Royal Canadian Pacific, Columbia Star Dinner Train, Grand Canyon RR, Texas State RR, Rio Grande Scenic RR, Great Smoky Mts. RR, and many others.

Trains Around North America airs Thursday, the 4th at 7:00 p.m. and Sunday, the 7th at 11:00 a.m. On HD3-1, it airs Sunday, the 7th at 2:00 p.m.



singles, an achievement no one—not Frank Sinatra, Elvis Presley, or the Beatles—has come close to matching.

American Masters “Bing Crosby Rediscovered” airs Tuesday, the 2nd, at 8:30 p.m. and Friday, the 26th at 9:00 p.m. On HD3-1, it airs Wednesday, the 3rd at 7:00 p.m.



50 Years with Peter, Paul and Mary

50 Years with Peter, Paul and Mary is a new documentary that focuses on portions of the trio's career not included in earlier PBS specials. This is the trio at the peak of their artistry, at a time when they dominated the *Billboard* music charts. In this special, they perform more than two dozen of their hits.

From the group's emergence in Greenwich Village, to the Civil Rights and anti-war era of the 1960s, through the decades of their later advocacy and music, and finally to the present, this intimate exploration of the trio reveals the impact of their artistry and activism on their generation and the world.

50 Years with Peter, Paul and Mary airs Monday, the 1st at 8:30 p.m. and Saturday, the 6th at 8:30 p.m. On HD3-1, it airs Thursday, the 4th at 8:30 p.m.

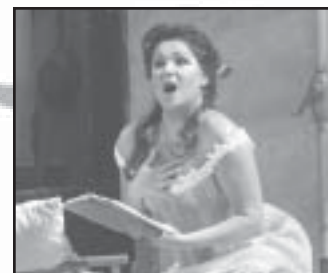


NOVA First Man on the Moon

In "First Man on the Moon," *Nova* presents an intimate portrait of Neil Armstrong through interviews with Armstrong's family and friends. The film reveals his achievements as a Navy combat veteran and pioneer of high-speed flight. *Nova* revisits the final moments of the Apollo 11 landing, when Armstrong brought the Eagle down safely with seconds to spare. But he regretted that he got so much credit for the team effort that the lunar landing represented.

In its exploration of this quietly effective man, the program explores his achievements following Apollo. This is an inspiring story of heroic risk-taking and humble dedication to advancing humanity's adventure in space.

"First Man on the Moon" on *Nova* airs Wednesday, the 3rd at 8:30 p.m.



Encores! Great Performances at the Met

Great Performances "Encores! Great Performances at the Met" features 19 unforgettable arias and duets selected from the past eight seasons of **Great Performances at the Met** broadcasts, performed by today's greatest opera stars. Hosted by soprano Deborah Voigt, the special covers a wide range of operatic ground, from heart-break to hilarity, delivered by such artists as Natalie Dessay, Plácido Domingo, Renee Fleming, Juan Diego Flórez, Jonas Kaufmann, and Anna Netrebko (above in Donizetti's "Don Pasquale"), along with Voigt herself. These extraordinary moments are drawn from more than 75 productions.

Great Performances "Encores! Great Performances at the Met" can be seen Saturday, the 6th at 6:30 p.m.

Wheat Belly Total Health

Dr. William Davis, MD, is the author of *Wheat Belly*, which has been on the *NY Times* bestseller list for 58 weeks now! In **Wheat Belly Total Health**, his new program based on his book, Dr. Davis debunks the 3 most widely-held myths about grains, and provides viewers with commonsense steps to regain health.

Dr. Davis presents his startling conclusion that eliminating wheat and grains is the key to eliminating the symptoms and causes of many of our most common and chronic health issues.

Dr. Davis shares information and case studies which demonstrate how joint pain, skin rashes, heartburn, diabetes, obesity, and even cardiovascular issues have been dramatically reversed by living a wheat- and grain-free lifestyle.

He also discusses the glut of gluten-free foods on the market now—and with in-depth explanations, reveals the truth about why they are bad for your health. Best of all, Dr. Davis outlines simple steps to becoming wheat-free while eating delicious, healthy foods.

Wheat Belly Total Health airs Saturday, the 6th at 11:00 a.m. On HD3-1, it airs Wednesday, the 3rd at 9:00 p.m.

Don't Worry, Retire Happy!

In **Don't Worry, Retire Happy! 7 Steps to Retirement Security**, Tom Hegna shows Americans how they can reach their retirement goals. This upbeat program explains the retirement solutions successful retirees use to secure their retirement. His retirement solutions work regardless of the economic climate, the valuation of the stock markets, or the current interest rates.

While explaining the math and science behind planning a successful retirement, Hegna shares his seven steps to retirement security. These steps include writing a retirement plan, considering a hybrid retirement, securing lifetime guarantee income, maximizing social security benefits, growing a retirement nest egg, planning for non-covered medical costs, and using your home equity wisely.

Don't Worry, Retire Happy! airs Wednesday, the 3rd at 7:00 p.m. and Sunday, the 7th at 5:00 p.m. On HD3-1, it airs Monday, the 1st at 8:30 p.m.



A Tribute to Bruce Springsteen

This two-hour **Tribute** features Patti Scialfa (top right), Zac Brown and Mavis Staples (bottom left), John Legend (bottom right), and many others. It airs Friday, the 5th at 8:30 p.m.



◆ KENW-TV's DAYTIME SCHEDULES ◆

Kids' Programming, How-to's, and Family Viewing

3-2 (SD) is your regular KENW-TV channel. Channels 3-1 (HD) and 3-3 (SD) require a digital television or a converter box, both with antennas.

Channel 3-2

Monday through Friday

- 6:00 am Classical Stretch
- 6:30 am BBC World News
- 7:00 am Sesame Street
- 8:00 am Dinosaur Train
- 8:30 am Peg + Cat
- 9:00 am SuperWhy!
- 9:30 am Daniel Tiger's Neighborhood
- 10:00 am Sid the Science Kid
- 10:30 am WordWorld (M)
- Peep & the Big Wide World (Tu)
- Angelina Ballerina (W)
- Signing Time! (Th)
- Mister Rogers (F)
- 11:00 am America's Test Kitchen (M)
- Martha Stewart's Cooking School (Tu)
- New Fly Fisher (W)
- American Woodshop (Th)
- Bob the Builder (F)
- 11:30 am Cook's Country (M)
- Knitting Daily (Tu)
- Woodturning Workshop (W)
- Taste of History VI (Th)
- Thomas & Friends (F)
- 12:00 pm Sit and Be Fit (MWF)
- Creative Living (TuTh)
- 12:30 pm Beads, Baubles and Jewels (M)
- Fit 2 Stitch (Tu)
- Fons & Porter's Love of Quilting (W)
- Welcome to My Studio (Th)
- Beauty of Oil Painting (F)
- 1:00 pm Curious George
- 1:30 pm Clifford the Big Red Dog
- 2:00 pm Cat in the Hat
- 2:30 pm Arthur
- 3:00 pm Martha Speaks
- 3:30 pm Odd Squad
- 4:00 pm WordGirl
- 4:30 pm BBC World News America
- 5:00 pm Charlie Rose: The Week (M)
- Scully/The World Show (Tu)
- Religion & Ethics Newsweekly (W)
- Focus on Europe (Th)
- BBC Newsnight (F)
- 5:30 pm Nightly Business Report
- 6:00 pm PBS NewsHour

Channel 3-3

Monday through Friday

- 6:00 am Curious George
- 6:30 am Cat in the Hat
- 7:00 am Peg + Cat
- 7:30 am Dinosaur Train
- 8:00 am Sesame Street
- 9:00 am Daniel Tiger's Neighborhood
- 9:30 am Sid the Science Kid
- 10:00 am SuperWhy
- 10:30 am Thomas & Friends
- 11:00 am Caillou
- 11:30 am Clifford the Big Red Dog
- 12:00 pm Mister Rogers (M)
- Peep & the Big Wide World (Tu)
- Biscuit Brothers (W)
- Signing Time! (Th)
- Maya & Miguel (F)
- 12:30 pm Bob the Builder (M)
- Barney & Friends (Tu)
- Angelina Ballerina (W)
- WordWorld (Th)
- Space Racers (F)
- 1:00 pm Sid the Science Kid
- 1:30 pm Martha Speaks
- 2:00 pm Arthur
- 2:30 pm WordGirl
- 3:00 pm Odd Squad
- 3:30 pm Peg + Cat
- 4:00 pm Dinosaur Train
- 4:30 pm WordWorld (M)
- Angelina Ballerina (Tu)
- Bob the Builder (W)
- Curious George (Th)
- Bali (F)
- 5:00 pm Signing Time! (M)
- Biscuit Brothers (Tu)
- Peep & the Big Wide World (W)
- Hands on Crafts for Kids (Th)
- Twice As Good (F)
- 5:30 pm Imagination Station (M)
- Sci Girls (Tu)
- Biz Kid\$ (W)
- Curiosity Quest (Th)
- Hands on Crafts for Kids (F)
- 6:00 pm Cat in the Hat
- 6:30 pm SuperWhy!
- 7:00 pm Arthur
- 7:30 pm WordGirl
- 8:00 pm Odd Squad
- 8:30 pm Martha Speaks

Saturday

- 6:00 AM Peg + Cat
- 6:30 am Dinosaur Train
- 7:00 am Thomas & Friends
- 7:30 am Angelina Ballerina
- 8:00 am Bob the Builder
- 8:30 am Sid the Science Kid
- 9:00 am SuperWhy
- 9:30 am Arthur
- 10:00 am Space Racers
- 10:30 am Sci Girls
- 11:00 am WordGirl
- 11:30 am Cyberchase
- 12:00 pm Odd Squad
- 12:30 pm Maya & Miguel
- 1:00 pm Curious George
- 1:30 pm Cat in the Hat
- 2:00 pm Peep & the Big Wide World
- 2:30 pm WordWorld
- 3:00 pm Caillou
- 3:30 pm Clifford the Big Red Dog
- 4:00 pm Peg + Cat
- 4:30 pm Biscuit Brothers
- 5:00 pm Biz Kid\$
- 5:30 pm Martha Speaks
- 6:00 pm Odd Squad
- 6:30 pm Imagination Station
- 7:00 pm Curiosity Quest
- 7:30 pm Sci Girls
- 8:00 pm Signing Time!
- 8:30 pm Arthur

Sunday

- 6:00 am Peg + Cat
- 6:30 am Dinosaur Train
- 7:00 am Daniel Tiger's Neighborhood
- 7:30 am SuperWhy!
- 8:00 am Sid the Science Kid
- 8:30 am Arthur
- 9:00 am Odd Squad
- 9:30 am Martha Speaks
- 10:00 am Cyberchase
- 10:30 am Space Racers
- 11:00 am Imagination Station
- 11:30 am Hands on Crafts for Kids
- 12:00 pm Curiosity Quest
- 12:30 pm Biz Kid\$
- 1:00 pm Bali
- 1:30 pm Signing Time!
- 2:00 pm Biscuit Brothers
- 2:30 pm Peg + Cat
- 3:00 pm SuperWhy!
- 3:30 pm Curious George
- 4:00 pm Cat in the Hat
- 4:30 pm Peep & the Big Wide World
- 5:00 pm WordWorld
- 5:30 pm Caillou
- 6:00 pm Clifford the Big Red Dog
- 6:30 pm Bob the Builder
- 7:00 pm Thomas & Friends
- 7:30 pm Angelina Ballerina
- 8:00 pm Sci Girls
- 8:30 pm Biz Kid\$

Channel 3-1

Saturday

- 5:00 am Barney & Friends
- 5:30 am Angelina Ballerina
- 6:00 am Curious George
- 6:30 am Curious George
- 7:00 am Daniel Tiger's Neighborhood
- 7:30 am Daniel Tiger's Neighborhood
- 8:00 am Sesame Street (shorts)
- 8:30 am Dinosaur Train
- 9:00 am Thomas & Friends
- 9:30 am Bob the Builder

Sunday

- 5:00 am Sid the Science Kid
- 5:30 am Peg + Cat
- 6:00 am Curious George
- 6:30 am Curious George
- 7:00 am Daniel Tiger's Neighborhood
- 7:30 am Daniel Tiger's Neighborhood
- 8:00 am Sesame Street (shorts)
- 8:30 am Dinosaur Train
- 9:00 am Dinosaur Train
- 9:30 am Peg + Cat
- 10:00 am Cat in the Hat
- 10:30 am Odd Squad
- 11:00 am Wild Kratts
- 11:30 am Arthur
- 12:00 pm Cyberchase

KENW TV SCHEDULES 3-1 (HD), 3-2 (SD) AND 3-3 (SD)

Our regular KENW-TV Channel (3-2) is listed below in bold. It can be seen by those who use cable or one of our analog translators listed on page 3. Schedule 3-1 is our High Definition (HD) Channel and 3-3 is our Children's/Encore Standard Definition (SD) Channel. Those with either digital TV sets or analog sets with converter boxes (both sets require antennas) can receive all three channels in most parts of our viewing area. KENW-TV has digital transmitters in the following cities: Clovis/Portales; Hobbs/Lovington; Roswell; Artesia; Fort Sumner; Tucumcari; Carlsbad; and now Ruidoso.

KENW-TV's 3-1 schedule (below in italics) is carried by DirecTV in most counties of New Mexico.
KENW-TV's 3-2 schedule (below in bold) is carried on Dish Network in most counties of New Mexico.

Monday 1st

5:00 3-1 *Classical Stretch*
 5:30 3-1 *Wai Lana Yoga*
 6:00 3-1 *Ice Warriors: USA Sled Hockey*
 7:30 3-1 *Rule*
 9:00 3-1 *Taste of History*
 9:30 3-1 *Sara's Weeknight Meals*
 10:00 3-1 *Growing a Greener World*
 10:30 3-1 *P. Allen Smith's Garden Home*
 11:00 3-1 *Legacy: Austria's Influence on American Skiing*
 12:00 3-1 *Ice Warriors: USA Sled Hockey*
 1:30 3-1 *Rule*
 3:00 3-1 *Farm with Ian Knauer*
 3:30 3-1 *Craftsman's Legacy*
 4:00 3-1 *America's Heartland*
 4:30 3-1 *Legacy: Austria's Influence on American Skiing*
 5:30 3-1 *Nightly Business Report*
 6:00 3-1 *PBS NewsHour*
7:00 Antiques Roadshow
"Junk in the Trunk 4, Pt. 1"
 3-1 *Fast Metabolism Revolution*
8:30 50 Years with Peter, Paul and Mary
 3-1 *Don't Worry, Retire Happy!*
9:00 Independent Lens "Powerless"
 3-3 *Charlie Rose*
 10:00 3-1 *Charlie Rose*
 3-3 *Antiques Roadshow*
10:30 Peregrine Dame "Puerto Rico"
11:00 Anders Zorn in the Gilded Age
 3-1 *Tavis Smiley*
 3-3 *Perfect Balance*
11:57 Star Gazers
12:00 PBS NewsHour
 3-1 *Antiques Roadshow*
 3-3 *El Taller*

Tuesday 2nd

5:00 3-1 *Classical Stretch*
 5:30 3-1 *Wai Lana Yoga*
 6:00 3-1 *Antiques Roadshow*
 7:00 3-1 *Perfect Balance*
 8:00 3-1 *El Taller*
 9:00 3-1 *Healthy Body Healthy Mind*
 9:30 3-1 *Second Opinion*
 10:00 3-1 *Closer to Truth*
 10:30 3-1 *Religion & Ethics Newsweekly*
 11:00 3-1 *Song of the Mountains*
 12:00 3-1 *Antiques Roadshow*
 1:00 3-1 *Perfect Balance*
 2:00 3-1 *El Taller*
 3:00 3-1 *Arts in Context*
 3:30 3-1 *American Health Journal*
 4:00 3-1 *Consuelo Mack WealthTrack*
 4:30 3-1 *Scully/The World Show*

5:00 3-1 *Report from Santa Fe*
 5:30 3-1 *Nightly Business Report*
 6:00 3-1 *PBS NewsHour*
7:00 Skinny Gut Vibrant You
 3-1 *Best of 50s Pop*
8:30 American Masters
"Bing Crosby Rediscovered"
 9:00 3-1 *Deepak Chopra: The Future of God*
 3-3 *Charlie Rose*
10:30 European Christmas Markets
 3-1 *Charlie Rose*
 3-3 *Pink Room*
11:00 Charlie Rose
 3-3 *Bernardin*
 11:30 3-1 *Tavis Smiley*
12:00 PBS NewsHour
 3-1 *Secrets of Chatsworth*
 3-3 *First Silent Night*

Wednesday 3rd

5:00 3-1 *Classical Stretch*
 5:30 3-1 *Wai Lana Yoga*
 6:00 3-1 *Pink Room*
 7:00 3-1 *Bernardin*
 8:00 3-1 *First Silent Night*
 9:00 3-1 *Watchers of the North, Pt. 5*
 9:30 3-1 *Rick Steves' Europe*
 10:00 3-1 *American Woodshop*
 10:30 3-1 *Woodturning Workshop*
 11:00 3-1 *Free or Equal: A Personal View by Johan Norberg*
 12:00 3-1 *Pink Room*
 1:00 3-1 *Bernardin*

2:00 3-1 *First Silent Night*
 3:00 3-1 *Tina's Ageless Kitchen*
 3:30 3-1 *Christina Cooks*
 4:00 3-1 *Cook's Country*
 4:30 3-1 *Free or Equal . . . Norberg*
 5:30 3-1 *Nightly Business Report*
 6:00 3-1 *PBS NewsHour*
7:00 Don't Worry, Retire Happy!
 3-1 *American Masters*
"Bing Crosby Rediscovered"
8:30 Nova "First Man on the Moon"
 9:00 3-1 *Wheat Belly Total Health*
 3-3 *Charlie Rose*
10:00 Nature: Best of Birds
 3-1 *Charlie Rose*
 3-3 *Champion Trees*
11:00 Charlie Rose
 3-1 *Tavis Smiley*
 3-3 *Silent Storytellers*
11:57 Star Gazers
12:00 PBS NewsHour
 3-1 *Nature "Hunters & Herds"*
 3-3 *Prange & Pearl Harbor: A Magnificent Obsession*

Thursday 4th

5:00 3-1 *Classical Stretch*
 5:30 3-1 *Wai Lana Yoga*
 6:00 3-1 *Moyers & Company*
 6:30 3-1 *Charlie Rose: The Week*
 7:00 3-1 *Champion Trees*
 8:00 3-1 *Silent Storytellers*
 9:00 3-1 *Fons & Porter's Quilting*

KENW-TV on Cable Companies

KENW-TV's 3-1 (High Definition, HD) and 3-2 (Standard Definition, SD) program schedules can be seen on the following cable companies:

Dexter: Channel 3 (SD) and Channel 470 (HD), Cable One
 Hobbs: Channel 3 (SD) and Channel 703 (HD), Baja Broadband
 Portales: Channel 3 (SD), and Channel 510 (HD), Comcast Cable
 Roswell: Channel 3 (SD), and Channel 470 (HD), Cable One

KENW-TV's 3-2 Schedule (Standard Definition, SD) can be seen on the following cable companies:

Artesia: Channel 3, PVT
 Carlsbad: Channel 3, Baja Broadband
 Clovis: Channel 3, Suddenlink
 Dexter: Channel 3, PVT
 Eddy County South: Channel 3, Baja Broadband
 Eunice: Channel 3, Baja Broadband
 Farwell: Channel 3, Suddenlink
 Ft. Sumner: Channel 3, Reach Broadband
 Hagerman: Channel 3, PVT
 Jal: Channel 3, Baja Broadband
 Lea County: Channel 3, Baja Broadband
 Loving: Channel 3, Baja Broadband
 Lovington: Channel 3, Comcast
 Melrose: Channel 9, Reach Broadband
 Muleshoe: Channel 5, Reach Broadband
 Texico: Channel 3, Suddenlink
 Tucumcari: Channel 11, Comcast

9:30 3-1 *Quilt in a Day*
 10:00 3-1 *Knit and Crochet Now!*
 10:30 3-1 *It's Sew Easy*
 11:00 3-1 *Songs to Keep: Treasures of an Adirondack Folk Collector*
 12:00 3-1 *Champion Trees*
 1:00 3-1 *Silent Storytellers*
 2:00 3-1 *Prange & Pearl Harbor: A Magnificent Obsession*
 3:00 3-1 *Feel Grand*
 3:30 3-1 *Backstage Pass*
 4:30 3-1 *Songs to Keep . . . Adirondack Collection*
 5:30 3-1 *Nightly Business Report*
 6:00 3-1 *PBS NewsHour*
7:00 Trains Around North America
 3-1 *Skinny Gut Vibrant You*
 8:30 3-1 *50 Years with Peter, Paul and Mary*
 9:00 3-3 *Charlie Rose*
10:00 Victor Borge's Timeless Comedy
 3-3 *Moyers & Company*
10:30 Pioneers of Television
 "Carol Burnett and the Funny Ladies"
 3-1 *Charlie Rose*
 3-3 *Scully/The World Show*
11:00 Charlie Rose
 3-3 *Free or Equal ... Norberg*
 11:30 3-1 *Tavis Smiley*
12:00 PBS NewsHour
 3-1 *This Old House Hour*
 3-3 *Farm Holiday Special*

Friday 5th

5:00 3-1 *Classical Stretch*
 5:30 3-1 *Wai Lana Yoga*
 6:00 3-1 *America's Heartland*
 6:30 3-1 *Peregrine Dame*
 7:00 3-1 *Song of the Mountains*
 8:00 3-1 *This Old House Hour*
 9:00 3-1 *Globe Trekker*
 10:00 3-1 *Joy of Painting*
 10:30 3-1 *Simply Painting*
 11:00 3-1 *Beauty of Oil Painting*
 11:30 3-1 *Welcome to My Studio*
 12:00 3-1 *Woodsongs*
 1:00 3-1 *Bluegrass Underground*
 1:30 3-1 *Start Up*
 2:00 3-1 *This Old House Hour*
 3:00 3-1 *Globe Trekker*
 4:00 3-1 *Dropping Back In*
 4:30 3-1 *Moyers & Company*
 5:00 3-1 *Focus on Europe*
 5:30 3-1 *Nightly Business Report*
 6:00 3-1 *PBS NewsHour*
7:00 Market to Market
 3-1 *Candy Bomber*
7:30 Consuelo Mack WealthTrack
8:00 Washington Week
 3-1 *Roosevelts, Pt. 5 "The Rising Road"*
8:30 Tribute to Bruce Springsteen
 9:00 3-3 *Charlie Rose*
 10:00 3-1 *Charlie Rose*
 3-3 *Free or Equal ... Norberg*
 11:00 3-1 *Tavis Smiley*
 3-3 *Farm Holiday Special*
11:30 European Christmas Markets
 3-3 *European Christmas Markets*
12:00 PBS NewsHour
 3-1 *Washington Week*
 3-3 *Champion Trees*

Happy New Year!
2015

Saturday 6th

6:00 Woodturning Workshop
 "Surface Decoration"
6:30 American Woodshop
 "Stair Case Upgrades"
7:00 Rough Cut "Patio Prep Station"
7:30 Cook's Country
 "New Orleans Shrimp and Creamy Grits"
8:00 America's Test Kitchen
 "Spiced-up Cuban Cuisine"
8:30 Christina Cooks "Your Bone Makeover"
9:00 Jazzy Vegetarian
 "Bake it Vegan Cooking"
9:30 Motorweek
10:00 Aging Backwards
 3-1 *This Old House Hour*
11:00 Wheat Belly Total Health
 3-1 *In Julia's Kitchen with Master Chefs*
 11:30 3-1 *Victory Garden's Ediblefeast*
 12:00 3-1 *This Old House*
12:30 Quilt in a Day "Silent Star and Comfort Quilt"
 3-1 *This Old House*
1:00 Why Quilts Matter "How Quilts Have Been Viewed and Collected"
 3-1 *Ask This Old House*
1:30 Fons & Porter's Love of Quilting
 "Periwinkles in Bloom"
 3-1 *Hometime*
2:00 Creative Living
 3-1 *Woodwright's Shop*
2:30 Martha Stewart's Cooking School
 "French Bistro Classics"
 3-1 *Motorweek*
3:00 Hometime "Creekside Home Porches"
 3-1 *Martha Stewart's Cooking School*
3:30 This Old House
 3-1 *Martha Bakes*
4:00 Ask This Old House
 3-1 *History Detectives*
4:30 Welcome to My Studio "M for Mediums"
5:00 Sewing with Nancy
 "Stitching a Sewing Community Together"
 3-1 *PBS NewsHour Weekend*
5:30 Fit 2 Stitch "Zippers, Here, There, Everywhere"
 3-1 *America by the Numbers*
6:00 Report from Santa Fe
 3-1 *Nature: Best of Birds*
6:30 Great Performances "Encores!
 Great Performances at the Met"
 7:00 3-1 *Rock Rewind 1967-1967*
8:30 50 Years with Peter, Paul and Mary
 3-1 *Kristin Chenoweth - Coming Home*
 9:00 3-3 *Lawrence Welk Show*
 10:00 3-1 *Austin City Limits*
 3-3 *Classic Gospel*
10:30 American Masters
 "Harper Lee: Hey Boo"
 11:00 3-1 *Nature "Hunters & Herds"*
 3-3 *Front and Center*
11:57 Star Gazers
12:00 Austin City Limits
 "Jason Isbell/Neko Case"
 3-1 *Nova "First Man on the Moon"*
 3-3 *Jubilee*

Sunday 7th

6:00 Getting Away Together
 "Hilton Head Island, SC"
6:30 Second Opinion "High Risk Pregnancy"
7:00 Antiques Roadshow "Denver, CO, Pt. 1"
8:00 Classic Gospel
 "Down by the Tabernacle"

9:00 Joy of Music "Joy of Christmas"
9:30 Joy of Music "Christmas in Europe"
10:00 Finding Your Roots II, Pt. 10
 "Decoding Our Past"
11:00 Trains Around North America
 12:30 3-1 *Washington Week*
 1:00 3-1 *Charlie Rose: The Week*
 1:30 3-1 *Market to Market*
2:00 JJ Virgin's Sugar Impact Secret
 3-1 *Trains Around North America*
3:30 Surviving Prostate Cancer
5:00 Don't Worry, Retire Happy!
 3-1 *PBS NewsHour Weekend*
 5:30 3-1 *Downton Abbey Rediscovered*
6:30 Jackie Evancho - Awakening - Live in Concert
 7:00 3-1 *Masterpiece "Downton Abbey Season 4," Pt. 1*
8:00 Masterpiece Classic
 "Downton Abbey Season 4," Pt. 1
 9:00 3-1 *Masterpiece "D. Abbey 4," Pt. 2*
 3-3 *Ultimate Restorations*
10:00 Masterpiece Classic
 "Downton Abbey Season 4," Pt. 2
 3-1 *Austin City Limits*
 3-3 *Legacy ... American Skiing*
11:00 Buddha
 3-1 *Masterpiece "D. Abbey 4," Pt. 1*
 3-3 *Masterpiece "D. Abbey 4, Pt. 1"*

Monday 8th

5:00 3-1 *Classical Stretch*
 5:30 3-1 *Wai Lana Yoga*
 6:00 3-1 *Masterpiece "Downton Abbey 4," Pt. 1*
 8:00 3-1 *Masterpiece "Downton Abbey 4," Pt. 2*
 9:00 3-1 *Taste of History*
 9:30 3-1 *Sara's Weeknight Meals*
 10:00 3-1 *Growing a Greener World*
 10:30 3-1 *P. Allen Smith's Garden Home*
 11:00 3-1 *Legacy: Austria's Influence on American Skiing*
 12:00 3-1 *Masterpiece "Downton Abbey 4, Pt. 1"*
 2:00 3-1 *Masterpiece "Downton Abbey 4, Pt. 2"*
 3:00 3-1 *Farm with Ian Knauer*
 3:30 3-1 *Craftsman's Legacy*
 4:00 3-1 *America's Heartland*
 4:30 3-1 *Legacy ... American Skiing*
 5:30 3-1 *Nightly Business Report*
 6:00 3-1 *PBS NewsHour*
7:00 Antiques Roadshow "Junk in the Trunk 3"
 3-1 *Antiques Roadshow*
8:00 Antiques Roadshow "Denver, CO, Pt. 2"
 3-1 *Independent Lens "Story of Love"*
9:00 Independent Lens "All of Me: A Story of Love, Loss, and Last Resorts"
 3-1 *Angels*
 3-3 *Charlie Rose*
10:00 All Aboard "Santa Fe Odyssey, Pt. 1"
 3-1 *Charlie Rose*
 3-3 *Antiques Roadshow*
10:30 Rick Steves' Europe "Western Turkey"
11:00 Antiques Roadshow
 3-1 *Tavis Smiley*
 3-3 *Independent Lens "Story of Love"*
11:57 Star Gazers
12:00 PBS NewsHour
 3-1 *Antiques Roadshow*
 3-3 *Angels*

Tuesday 9th

5:00 3-1 *Classical Stretch*
 5:30 3-1 *Wai Lana Yoga*
 6:00 3-1 *Antiques Roadshow*
 7:00 3-1 *Independent Lens "Story of Love"*

8:00 3-1 *Angels*
 9:00 3-1 *Healthy Body Healthy Mind*
 9:30 3-1 *Second Opinion*
 10:00 3-1 *Closer to Truth*
 10:30 3-1 *Religion & Ethics Newsweekly*
 11:00 3-1 *Song of the Mountains*
 12:00 3-1 *Antiques Roadshow*
 1:00 3-1 *Independent Lens "Story of Love"*
 2:00 3-1 *Angels*
 3:00 3-1 *Arts in Context*
 3:30 3-1 *American Health Journal*
 4:00 3-1 *Consuelo Mack WealthTrack*
 4:30 3-1 *Scully/The World Show*
 5:00 3-1 *Report from Santa Fe*
 5:30 3-1 *Nightly Business Report*
 6:00 3-1 *PBS NewsHour*
7:00 Rickover: The Birth of Nuclear Power
 3-1 *Rickover: The Birth of Nuclear Power*
9:00 You Should Know
 3-1 *Frontline "Madoff Affair"*
 3-3 *Charlie Rose*
 9:30 *Creative Living*
10:00 Frontline "The Madoff Affair"
 3-1 *Charlie Rose*
 3-3 *Rickover: The Birth of Nuclear Power*
11:00 Charlie Rose
 3-1 *Tavis Smiley*
12:00 PBS NewsHour
 3-1 *Rickover: The Birth of Nuclear Power*
 3-3 *Counting on Birds*

Wednesday 10th

5:00 3-1 *Classical Stretch*
 5:30 3-1 *Wai Lana Yoga*
 6:00 3-1 *Rickover: The Birth of Nuclear Power*
 8:00 3-1 *Counting on Birds*
 9:00 3-1 *Watchers of the North, Pt. 6*
 9:30 3-1 *Rick Steves' Europe*
 10:00 3-1 *American Woodshop*
 10:30 3-1 *Woodturning Workshop*
 11:00 3-1 *Frontline "Madoff Affair"*
 12:00 3-1 *Rickover: The Birth of Nuclear Power*
 2:00 3-1 *Counting on Birds*
 3:00 3-1 *Tina's Ageless Kitchen*
 3:30 3-1 *Christina Cooks*
 4:00 3-1 *Cook's Country*
 4:30 3-1 *Frontline "Madoff Affair"*
 5:30 3-1 *Nightly Business Report*
 6:00 3-1 *PBS NewsHour*
7:00 Nature "Moment of Impact: Jungle"
 3-1 *Nature "Jungle"*
8:00 Nova "3D Spies of WWII"
 3-1 *Nova*
9:00 Nazi Mega Weapons "U-Boat Base"
 3-1 *Nazi Mega Weapons*
 3-3 *Charlie Rose*
10:00 Healthy Body Healthy Mind
 "Managing Female Stress Urinary Incontinence"
 3-1 *Charlie Rose*
 3-3 *Nature*
10:30 This Old House
11:00 Charlie Rose
 3-1 *Tavis Smiley*
 3-3 *Nova*
11:57 Star Gazers
12:00 PBS NewsHour
 3-1 *Nature "Jungle"*
 3-3 *Nazi Mega Weapons*

Thursday 11th

5:00 3-1 *Classical Stretch*
 5:30 3-1 *Wai Lana Yoga*
 6:00 3-1 *Moyers & Company*
 6:30 3-1 *Charlie Rose: The Week*
 7:00 3-1 *Nature "Jungle"*
 8:00 3-1 *Nova "3D Spies"*
 9:00 3-1 *Fons & Porter's Quilting*
 9:30 3-1 *Quilt in a Day*
 10:00 3-1 *Knit and Crochet Now!*
 10:30 3-1 *Sew it All*
 11:00 3-1 *Farm Holiday Special with Ian Knauer*
 11:30 3-1 *European Christmas Markets*
 12:00 3-1 *Nature "Jungle"*
 1:00 3-1 *Nova "3D Spies"*
 2:00 3-1 *Nazi Mega Weapons*
 3:00 3-1 *Feel Grand with Jane Seymour*
 3:30 3-1 *Backstage Pass*
 4:30 3-1 *Farm Holiday Special*
 5:00 3-1 *European Christmas Markets*
 5:30 3-1 *Nightly Business Report*
 6:00 3-1 *PBS NewsHour*
7:00 Frontline "The Madoff Affair"
 3-1 *Song of the Mountains*
8:00 Song of the Mountains
 3-1 *Red Green Show*
 8:30 3-1 *New Mexico Colores!*
9:00 Crisis of Faith
 3-1 *Creative Living*
 3-3 *Charlie Rose*
9:30 Red Green Show "Cross the Lake Race"
 3-1 *You Should Know*
10:00 Jubilee "The Boxcars"
 3-1 *Charlie Rose*
 3-3 *Moyers & Company*
 10:30 3-3 *Scully/The World Show*
11:00 Charlie Rose
 3-1 *Tavis Smiley*
 3-3 *Frontline "Madoff Affair"*
12:00 PBS NewsHour
 3-1 *This Old House Hour*
 3-3 *Night Before Christmas Carol*

Friday 12th

5:00 3-1 *Classical Stretch*
 5:30 3-1 *Wai Lana Yoga*
 6:00 3-1 *America's Heartland*
 6:30 3-1 *Peregrine Dame*
 7:00 3-1 *Song of the Mountains*
 8:00 3-1 *This Old House Hour*
 9:00 3-1 *Globe Trekker*
 10:00 3-1 *Joy of Painting*
 10:30 3-1 *Simply Painting*
 11:00 3-1 *Beauty of Oil Painting*
 11:30 3-1 *Welcome to My Studio*
 12:00 3-1 *Woodsongs*
 1:00 3-1 *Bluegrass Underground*
 1:30 3-1 *Start Up*
 2:00 3-1 *This Old House Hour*
 3:00 3-1 *Globe Trekker*
 4:00 3-1 *Dropping Back In*
 4:30 3-1 *Moyers & Company*
 5:00 3-1 *Focus on Europe*
 5:30 3-1 *Nightly Business Report*
 6:00 3-1 *PBS NewsHour*
7:00 Market to Market
 3-1 *Washington Week*
7:30 Consuelo Mack WealthTrack
 3-1 *Charlie Rose: The Week*
8:00 Washington Week
 3-1 *Roosevelts, Pt. 6*
 "The Common Cause"
8:30 Charlie Rose: The Week

9:00 Live From Lincoln Center "Curtain Up: The School of American Ballet Workshop"
 3-3 *Charlie Rose*
 10:00 3-1 *Charlie Rose*
 3-3 *Frontline "Madoff Affair"*
10:30 Angels
 11:00 3-1 *Tavis Smiley*
 3-3 *Night Before Christmas Carol*
11:30 Christmas on the Danube
12:00 PBS NewsHour
 3-1 *Washington Week*
 3-3 *Nature "Jungle"*

Saturday 13th

6:00 Woodturning Workshop
 "Captive Ring Goblet"
6:30 American Woodshop
 "Segmented Turnings"
7:00 Rough Cut "Arts & Crafts Rocking Chair"
7:30 Cook's Country "Great Grilled Chicken and Texas Potato Salad"
8:00 America's Test Kitchen "Best Barbecued Chicken and Cornbread"
8:30 Christina Cooks "Your Heart Makeover"
9:00 Jazzy Vegetarian "Portable Picnic"
9:30 Motorweek
10:00 P. Allen Smith's Garden Home
 "The 12 Principles"
 3-1 *This Old House Hour*
10:30 Victory Garden's Ediblefeast
10:57 Star Gazers
11:00 Paint This with Jerry Yarnell
 "Rocky Mountain Refuge, Pt. 2"
 3-1 *In Julia's Kitchen with Master Chefs*
11:30 Joy of Painting "Peaceful Haven"
 3-1 *Victory Garden's Ediblefeast*
12:00 Beauty of Oil Painting "The Little Visitor"
 3-1 *This Old House*
12:30 Quilt in a Day
 "Radio Windmill and Sky Rocket"
 3-1 *This Old House*
1:00 Why Quilts Matter "Empowering Women One Quilt at a Time"
 3-1 *Ask This Old House*
1:30 Fons & Porter's Love of Quilting
 "Links, Pt. 1"
 3-1 *Hometime*
2:00 Creative Living
 3-1 *Woodwright's Shop*
2:30 Martha Stewart's Cooking School
 "Turkey"
 3-1 *Motorweek*
3:00 Hometime
 "Creekside Home Great Room"
 3-1 *Martha Stewart's Cooking School*
3:30 This Old House
 3-1 *Martha Bakes*
4:00 Ask This Old House
 3-1 *History Detectives*
4:30 Welcome to My Studio
 "P for Portraits"
5:00 Sewing with Nancy
 "The Absolute Easiest Way to Sew, Pt. 1"
 3-1 *PBS NewsHour Weekend*
5:30 Fit 2 Stitch "Three Patterns, One Wardrobe"
 3-1 *America by the Numbers*
6:00 Report from Santa Fe
 3-1 *Antiques Roadshow*
6:30 America's Heartland
7:00 Lawrence Welk Show
 "The Music of Harry Warren"
 3-1 *Live From Lincoln Center*
 "Curtain Up: Ballet Workshop"

8:00 To the Manor Born
8:30 Good Neighbors "The Wind-break War"
 3-1 *Downton Abbey Rediscovered*
9:00 Austin City Limits "Rodrigo y Gabriela"
 3-1 *Independent Lens* "Story of Love"
 3-3 *Lawrence Welk Show*
10:00 Nova "3D Spies of WWII"
 3-1 *Austin City Limits*
 3-3 *Classic Gospel*
11:00 Nature "Moment of Impact: Jungle"
 3-1 *Nature*
 3-3 *Front and Center*
12:00 Austin City Limits
 3-1 *Nova*
 3-3 *Jubilee*

Sunday 14th

6:00 Getting Away Together
 "Gulf Shores & Orange Beach, Alabama"
6:30 Second Opinion
 "Controlling Hypertension"
7:00 Antiques Roadshow "Denver, CO, Pt. 2"
8:00 Classic Gospel "Atlanta Homecoming"
9:00 Joy of Music "Music of Christmas"
9:30 Joy of Music "An American Christmas I"
10:00 First Silent Night
11:00 Globe Trekker Food Hour "Mexico"
12:00 Cultura
12:30 In Focus
 3-1 *Washington Week*
 1:00 3-1 *Charlie Rose: The Week*
1:30 All Aboard "Illinois Central"
 3-1 *Market to Market*
2:00 Closer to Trut "Is This God?"
 3-1 *Religion & Ethics Newsweekly*
2:30 Well Read
 "Carol Cassella, Gemini"
 3-1 *Mind of a Chef*
3:00 Healthy Body Healthy Mind
 "Pain Management"
 3-1 *Chef's Life*
3:30 Religion & Ethics Newsweekly
 3-1 *Martha Stewart's Cooking School*
4:00 Classic Gospel
 "Best of Anthony Burger"
 3-1 *Nova* "3D Spies of WWII"
5:00 PBS NewsHour Weekend
 3-1 *PBS NewsHour Weekend*
5:30 McLaughlin Group
 3-1 *America by the Numbers*
6:00 Moyers & Company
 3-1 *To the Manor Born*
6:30 Expeditions "Bison: Return of a True American"
 3-1 *Good Neighbors*
7:00 Joshua Bell Presents Musical Gifts
 3-1 *Masterpiece "D. Abbey 4," Pt. 3*
8:00 Masterpiece Classic
 "Downton Abbey 4, Pt. 3"
 3-1 *Masterpiece "D. Abbey 4," Pt. 4*
9:00 Masterpiece Classic
 "Downton Abbey 4," Pt. 4
 3-1 *Masterpiece "D. Abbey 4," Pt. 5*
 3-3 *Ultimate Restorations*
10:00 Masterpiece Classic
 "Downton Abbey 4," Pt. 5
 3-1 *Austin City Limits*
 3-3 *Legacy ... American Skiing*
11:00 Age of Delirium
 3-1 *Masterpiece "D. Abbey 4," Pt. 3*
 3-3 *Masterpiece "D. Abbey 4," Pt. 3*
12:00 Nova "3D Spies of WWII"
 3-1 *Masterpiece "D. Abbey 4," Pt. 4*
 3-3 *Masterpiece "D. Abbey 4," Pt. 4*

Monday 15th

5:00 3-1 *Classical Stretch*
 5:30 3-1 *Wai Lana Yoga*
 6:00 3-1 *Masterpiece "D. Abbey 4," Pt. 3*
 7:00 3-1 *Masterpiece "D. Abbey 4," Pt. 4*
 8:00 3-1 *Masterpiece "D. Abbey 4," Pt. 5*
 9:00 3-1 *Taste of History*
 9:30 3-1 *Sara's Weeknight Meals*
 10:00 3-1 *Growing a Greener World*
 10:30 3-1 *P. Allen Smith's Garden Home*
 11:00 3-1 *Legacy ... American Skiing*
 12:00 3-1 *Masterpiece "D. Abbey 4," Pt. 3*
 1:00 3-1 *Masterpiece "D. Abbey 4," Pt. 4*
 2:00 3-1 *Masterpiece "D. Abbey 4," Pt. 5*
 3:00 3-1 *Farm with Ian Knauer*
 3:30 3-1 *Craftsman's Legacy*
 4:00 3-1 *America's Heartland*
 4:30 3-1 *Legacy ... American Skiing*
 5:30 3-1 *Nightly Business Report*
 6:00 3-1 *PBS NewsHour*
7:00 Antiques Roadshow
 "Junk in the Trunk 4," Pt. 2
 3-1 *Antiques Roadshow*
8:00 Antiques Roadshow "Denver, CO, Pt. 3"
 3-1 *Journey to Planet Earth: Extreme Realities*
9:00 Journey to Planet Earth: Extreme Realities: Severe Weather, Climate Change, & National Security Threats
 3-1 *Legends of the Sky: The Jenny*
 3-3 *Charlie Rose*
10:00 All Aboard "Rails to Steel City"
 3-1 *Charlie Rose*
 3-3 *Antiques Roadshow*
10:30 Rick Steves' Europe "Central Turkey"
11:00 Antiques Roadshow
 3-1 *Tavis Smiley*
 3-3 *Journey to Planet Earth: Extreme Realities*
11:57 Star Gazers
12:00 PBS NewsHour
 3-1 *Antiques Roadshow*
 3-3 *Legends of the Sky: The Jenny*

Tuesday 16th

5:00 3-1 *Classical Stretch*
 5:30 3-1 *Wai Lana Yoga*
 6:00 3-1 *Antiques Roadshow*
 7:00 3-1 *Journey to Planet Earth: Extreme Realities*
 8:00 3-1 *Legends of the Sky: The Jenny*
 9:00 3-1 *Healthy Body Healthy Mind*
 9:30 3-1 *Second Opinion*
 10:00 3-1 *Closer to Truth*
 10:30 3-1 *Religion & Ethics Newsweekly*
 11:00 3-1 *Song of the Mountains*
 12:00 3-1 *Antiques Roadshow*
 1:00 3-1 *Journey to Planet Earth: Extreme Realities*
 2:00 3-1 *Legends of the Sky: The Jenny*
 3:00 3-1 *Arts in Context*
 3:30 3-1 *American Health Journal*
 4:00 3-1 *Consuelo Mack WealthTrack*
 4:30 3-1 *Scully/The World Show*
 5:00 3-1 *Report from Santa Fe*
 5:30 3-1 *Nightly Business Report*
 6:00 3-1 *PBS NewsHour*
7:00 Sacred Journeys "Lourdes," Pt. 1
 3-1 *Sacred Journeys, Pt. 1*
8:00 Sacred Journeys "Shikoku," Pt. 2
 3-1 *Sacred Journeys, Pt. 2*
9:00 You Should Know
 3-1 *Chef's Life Holiday Special*
 3-3 *Charlie Rose*

9:30 Creative Living
10:00 Heirloom Meals Christmas
 3-1 *Charlie Rose*
 3-3 *Sacred Journeys "Lourdes," Pt. 1*
11:00 Charlie Rose
 3-1 *Tavis Smiley*
 3-3 *Sacred Journeys "Shikoku," Pt. 2*
12:00 PBS NewsHour
 3-1 *Sacred Journeys "Lourdes," Pt. 1*
 3-3 *Chef's Life Holiday Special*

Wednesday 17th

5:00 3-1 *Classical Stretch*
 5:30 3-1 *Wai Lana Yoga*
 6:00 3-1 *Sacred Journeys "Lourdes," Pt. 1*
 7:00 3-1 *Sacred Journeys "Shikoku," Pt. 2*
 8:00 3-1 *Chef's Life Holiday Special*
 9:00 3-1 *Aviators*
 9:30 3-1 *Rick Steves' Europe*
 10:00 3-1 *American Woodshop*
 10:30 3-1 *Woodturning Workshop*
 11:00 3-1 *Emery Blagdon and His Healing Machine*
 11:30 3-1 *Being with the Energy of Forgiveness*
 12:00 3-1 *Sacred Journeys "Lourdes," Pt. 1*
 1:00 3-1 *Sacred Journeys "Shikoku," Pt. 2*
 2:00 3-1 *Chef's Life Holiday Special*
 3:00 3-1 *Tina's Ageless Kitchen*
 3:30 3-1 *Christina Cooks*
 4:00 3-1 *Cook's Country*
 4:30 3-1 *Emery Blagdon and His Healing Machine*
 5:00 3-1 *Being with the Energy of Forgiveness*
 5:30 3-1 *Nightly Business Report*
 6:00 3-1 *PBS NewsHour*
7:00 Nature "Elsa's Legacy: The Born Free Story"
 3-1 *Nature*
8:00 Nova "Making Stuff Wilder"
 3-1 *Nova*
9:00 Nova "Making Stuff Colder"
 3-1 *Nova*
 3-3 *Charlie Rose*
10:00 Healthy Body Healthy Mind
 "Understanding Organ Donation and Transplantation"
 3-1 *Charlie Rose*
 3-3 *Nature*
10:30 This Old House
11:00 Charlie Rose
 3-1 *Tavis Smiley*
 3-3 *Nova*
11:57 Star Gazers
12:00 PBS NewsHour
 3-1 *Nature*
 3-3 *Nova*

Thursday 18th

5:00 3-1 *Classical Stretch*
 5:30 3-1 *Wai Lana Yoga*
 6:00 3-1 *Moyers & Company*
 6:30 3-1 *Charlie Rose: The Week*
 7:00 3-1 *Nature "Elsa's Legacy ..."*
 8:00 3-1 *Nova "Making Stuff Wilder"*
 9:00 3-1 *Fons & Porter's Quilting*
 9:30 3-1 *Quilt in a Day*
 10:00 3-1 *Knit and Crochet Now!*
 10:30 3-1 *Sew it All*
 11:00 3-1 *Night Before Christmas Carol*
 12:00 3-1 *Nature "Elsa's Legacy ..."*
 1:00 3-1 *Nova "Making Stuff Wilder"*
 2:00 3-1 *Nova "Making Stuff Colder"*

3:00 3-1 *Feel Grand with Jane Seymour*
 3:30 3-1 *Backstage Pass*
 4:30 3-1 *Night Before Christmas Carol*
 5:30 3-1 *Nightly Business Report*
 6:00 3-1 *PBS NewsHour*
**7:00 Journey to Planet Earth:
 Extreme Realities**
 3-1 *Song of the Mountains*
8:00 Song of the Mountains
 3-1 *Red Green Show*
 8:30 3-1 *New Mexico Colores!*
9:00 Christmas on the Danube
 3-1 *Creative Living*
 3-3 *Charlie Rose*
9:30 Red Green Show "The Salmon Parade"
 3-1 *You Should Know*
10:00 Jubilee "Best of the Festival of the
 Bluegrass 40th Anniversary"
 3-1 *Charlie Rose*
 3-3 *Moyers & Company*
 10:30 3-3 *Scully/The World Show*
11:00 Charlie Rose
 3-1 *Tavis Smiley*
 3-3 *Emery Blagdon and His Health
 Machine*
 11:30 3-3 *Being with the Energy of
 Forgiveness*
12:00 PBS NewsHour
 3-1 *This Old House Hour*
 3-3 *Shaun Johnson Big Band
 Experience*

Friday 19th

5:00 3-1 *Classical Stretch*
 5:30 3-1 *Wai Lana Yoga*
 6:00 3-1 *America's Heartland*
 6:30 3-1 *Peregrine Dame*
 7:00 3-1 *Song of the Mountains*
 8:00 3-1 *This Old House Hour*
 9:00 3-1 *Globe Trekker*
 10:00 3-1 *Joy of Painting*
 10:30 3-1 *Simply Painting*
 11:00 3-1 *Beauty of Oil Painting*
 11:30 3-1 *Welcome to My Studio*
 12:00 3-1 *Woodsongs*
 1:00 3-1 *Bluegrass Underground*
 1:30 3-1 *Start Up*
 2:00 3-1 *This Old House Hour*
 3:00 3-1 *Globe Trekker*
 4:00 3-1 *Dropping Back In*
 4:30 3-1 *Moyers & Company*
 5:00 3-1 *Focus on Europe*
 5:30 3-1 *Nightly Business Report*
 6:00 3-1 *PBS NewsHour*
7:00 Market to Market
 3-1 *Washington Week*
7:30 Consuelo Mack WealthTrack
 3-1 *Charlie Rose: The Week*
8:00 Washington Week
 3-1 *Roosevelts, Pt. 7 "A Strong and
 Active Faith"*
8:30 Charlie Rose: The Week
**9:00 Christmas with the Mormon
 Tabernacle Choir**
 3-3 *Charlie Rose*
10:00 Rickover: The Birth of Nuclear Power
 3-1 *Charlie Rose*
 3-3 *Emery Blagdon and His Healing
 Machine*
 10:30 3-3 *Being with the Energy of*
 11:00 3-1 *Tavis Smiley*
 3-3 *Shaun Johnson Big Band*
12:00 PBS NewsHour
 3-1 *Washington Week*
 3-3 *Nature "Elsa's Legacy"*

Saturday 20th

6:00 Woodturning Workshop
 "Potpourri Pot"
6:30 American Woodshop "Thinking Toys 2"
7:00 Rough Cut "Pencil Post Bed"
7:30 Cook's Country "Oklahoma Onion
 Burgers and Louisiana Meat Pies"
8:00 America's Test Kitchen
 "Easy Summer Supper"
8:30 Christina Cooks "Makeover, Italian Style"
9:00 Jazzy Vegetarian "What's for Breakfast?"
9:30 Motorweek
10:00 P. Allen Smith's Garden Home
 "Enclosure"
 3-1 *This Old House Hour*
10:30 Victory Garden's Ediblefeast
10:57 Star Gazers
11:00 Paint This with Jerry Yarnell
 "Rocky Mountain Refuge, Pt. 3"
 3-1 *In Julia's Kitchen with Master Chefs*
11:30 Joy of Painting "Mountain Hideaway"
 3-1 *Victory Garden's Ediblefeast*
12:00 Beauty of Oil Painting "Floral Bouquet"
 3-1 *Chef's Life, Pt. 1*
12:30 Quilt in a Day "Army Star and Hope of
 Hartford"
 3-1 *Chef's Life, Pt. 2*
1:00 Why Quilts Matter "Quilt Nation:
 20,000,000 and Counting!"
 3-1 *Chef's Life, Pt. 3*
1:30 Fons & Porter's Love of Quilting
 "Links, Pt. II"
 3-1 *Chef's Life, Pt. 4*
2:00 Heirloom Meals Christmas
 3-1 *Chef's Life, Pt. 5*
 2:30 3-1 *Chef's Life, Pt. 6*
3:00 Hometown "Ranch Addition Framing"
 3-1 *Chef's Life, Pt. 7*
3:30 This Old House
 3-1 *Chef's Life, Pt. 8*
4:00 Ask This Old House
 3-1 *Chef's Life Holiday Special*
4:30 Welcome to My Studio "S for Still Life"
5:00 Sewing with Nancy
 "The Absolute Easiest Way to Sew, Pt. 2"
 3-1 *PBS NewsHour Weekend*
5:30 Fit 2 Stitch "The Wrap Dress"
 3-1 *America by the Numbers*
6:00 Report from Santa Fe
 3-1 *Antiques Roadshow*
6:30 America's Heartland
7:00 Lawrence Welk Show "Christmas"
 3-1 *Christmas with the Mormon
 Tabernacle Choir*
8:00 To the Manor Born
 3-1 *Christmas in Norway with the St.
 Olaf Choir*
8:30 Good Neighbors "Whose Fleas Are
 These"
9:00 Austin City Limits "Tom Watts"
 3-1 *Shaun Johnson Big Band
 Experience*
 3-3 *Lawrence Welk Show*
10:00 Nova "Making Stuff Wilder"
 3-1 *Austin City Limits*
 3-3 *Classic Gospel*
11:00 Nature "Elsa's Legacy:
 The Born Free Story"
 3-1 *Nature*
 3-3 *Front and Center*
12:00 Austin City Limits
 3-1 *Nova*
 3-3 *Jubilee*

Sunday 21st

6:00 Getting Away Together
 "Best of Getting Away Together"
6:30 Second Opinion "C. Difficile"
7:00 Antiques Roadshow "Denver, CO, Pt. 3"
8:00 Classic Gospel
 "Homecoming Texas Style"
9:00 Joy of Music "An American Christmas II"
9:30 Joy of Music "My Favorites II"
10:00 Joshua Bell Presents Musical Gifts
11:00 Globe Trekker Special "World War I"
12:00 New Mexico Colores!
 "Michael Naranjo/Tanaya Winder/Ray
 Maseman"
12:30 In Focus
 3-1 *Washington Week*
 1:00 3-1 *Charlie Rose: The Week*
1:30 All Aboard "Rockets & Rails"
 3-1 *Market to Market*
2:00 Closer to Truth
 "Will the Universe Ever End?"
 3-1 *Religion & Ethics Newsweekly*
2:30 Well Read "Anthony Doerr, All the Light
 We Cannot See"
 3-1 *Mind of a Chef*
3:00 Healthy Body Healthy Mind
 "Shoulder Arthroplasty"
 3-1 *Chef's Life*
3:30 Religion & Ethics Newsweekly
 3-1 *Martha Stewart's Cooking School*
4:00 Classic Gospel "Gaither Vocal Band/
 EHSS Together"
 3-1 *Nova "Making Stuff Wilder"*
5:00 PBS NewsHour Weekend
 3-1 *PBS NewsHour Weekend*
5:30 McLaughlin Group
 3-1 *America by the Numbers*
6:00 Moyers & Company
 3-1 *To the Manor Born*
6:30 Expeditions "The Prairie Dog Wars"
 3-1 *Good Neighbors*
7:00 Tales from the Royal Bedchamber
 3-1 *Tales from the Royal Bedchamber*
8:00 Masterpiece Classic
 "Downton Abbey 4," Pt. 6
 3-1 *Masterpiece "D. Abbey 4," Pt. 6*
9:00 Masterpiece Classic
 "Downton Abbey 4," Pt. 7
 3-1 *Masterpiece "D. Abbey 4," Pt. 7*
 3-3 *Ultimate Restorations*
 10:00 3-3 *Legacy ... American Skiing*
10:30 Heiress and Her Chateau
 3-1 *Austin City Limits*
 11:00 3-3 *Masterpiece "D. Abbey 4," Pt. 6*
11:30 Crisis of Faith
 3-1 *Tales from the Royal Bedchamber*
12:00 Nova "Making Stuff Wilder"
 3-3 *Masterpiece "D. Abbey 4," Pt. 7*

Monday 22nd

5:00 3-1 *Classical Stretch*
 5:30 3-1 *Wai Lana Yoga*
 6:00 3-1 *Masterpiece "D. Abbey 4," Pt. 6*
 7:00 3-1 *Masterpiece "D. Abbey 4," Pt. 7*
 8:30 3-1 *Christmas on the Danube*
 9:00 3-1 *Taste of History*
 9:30 3-1 *Sara's Weeknight Meals*
 10:00 3-1 *Growing a Greener World*
 10:30 3-1 *P. Allen Smith's Garden Home*
 11:00 3-1 *Legacy ... American Skiing*
 12:00 3-1 *Masterpiece "D. Abbey 4," Pt. 6*
 1:00 3-1 *Masterpiece "D. Abbey 4," Pt. 7*
 2:30 3-1 *Christmas on the Danube*
 3:00 3-1 *Farm with Ian Knauer*

Friday 26th

- 3:30 3-1 *Food Forward*
4:00 3-1 *America's Heartland*
4:30 3-1 *Legacy ... American Skiing*
5:30 3-1 *Nightly Business Report*
6:00 3-1 *PBS NewsHour*
7:00 Antiques Roadshow "The Boomer Years"
3-1 *Antiques Roadshow*
8:00 Antiques Roadshow "Phoenix, AZ, Pt. 1"
3-1 *Independent Lens* "Trials of Muhammad Ali"
9:00 First Silent Night
3-3 *Charlie Rose*
9:30 3-1 *Our American Family: The Barreras*
10:00 Tracks of Imagination
3-1 *Charlie Rose*
3-3 *Antiques Roadshow*
11:00 Antiques Roadshow
3-1 *Tavis Smiley*
3-3 *Independent Lens* "Trials of Muhammad Ali"
11:57 Star Gazers
12:00 PBS NewsHour
3-1 *Antiques Roadshow*

Tuesday 23rd

- 5:00 3-1 *Classical Stretch*
5:30 3-1 *Wai Lana Yoga*
6:00 3-1 *Antiques Roadshow*
7:00 3-1 *Independent Lens* "Trials of Muhammad Ali"
8:30 3-1 *Our American Family: The Barreras*
9:00 3-1 *Healthy Body Healthy Mind*
9:30 3-1 *Second Opinion*
10:00 3-1 *Closer to Truth*
10:30 3-1 *Religion & Ethics Newsweekly*
11:00 3-1 *Song of the Mountains*
12:00 3-1 *Antiques Roadshow*
1:00 3-1 *Independent Lens* "...Muhammad Ali"
2:30 3-1 *Our American Family: The Barreras*
3:00 3-1 *Arts in Context*
3:30 3-1 *American Health Journal*
4:00 3-1 *Consuelo Mack WealthTrack*
4:30 3-1 *Scully/The World Show*
5:00 3-1 *Report from Santa Fe*
5:30 3-1 *Nightly Business Report*
6:00 3-1 *PBS NewsHour*
7:00 Sacred Journeys "Jerusalem," Pt. 3
3-1 *Sacred Journeys, Pt. 3*
8:00 Sacred Journeys "Hajj," Pt. 4
3-1 *Sacred Journeys, Pt. 4*
9:00 You Should Know
3-1 *Frontline* "From Jesus to Christ: The First Christians," Pts. 1 & 2
3-3 *Charlie Rose*
9:30 Creative Living
10:00 Frontline "From Jesus to Christ: The First Christians," Pts. 1 & 2
3-3 *Sacred Journeys* "Jerusalem," Pt. 3
11:00 3-1 *Charlie Rose*
3-3 *Sacred Journeys* "Hajj," Pt. 4
12:00 PBS NewsHour
3-1 *Sacred Journeys* "Jerusalem," Pt. 3
3-3 *Tracks of Imagination*

Wednesday 24th

- 5:00 3-1 *Classical Stretch*
5:30 3-1 *Wai Lana Yoga*
6:00 3-1 *Sacred Journeys* "Jerusalem," Pt. 3
7:00 3-1 *Sacred Journeys* "Hajj," Pt. 4
8:00 3-1 *Tracks of Imagination*
9:00 3-1 *Aviators*
9:30 3-1 *Rick Steves' Europe*
10:00 3-1 *American Woodshop*

- 10:30 3-1 *Woodturning Workshop*
11:00 3-1 *David Suchet in the Footsteps of St. Peter, Pt. 1*
12:00 3-1 *Sacred Journeys* "Jerusalem," Pt. 1
1:00 3-1 *Sacred Journeys* "Hajj," Pt. 2
2:00 3-1 *Tracks of Imagination*
3:00 3-1 *Tina's Ageless Kitchen*
3:30 3-1 *Christina Cooks*
4:00 3-1 *Cook's Country*
4:30 3-1 *David Suchet ... St. Peter, Pt. 1*
5:30 3-1 *Nightly Business Report*
6:00 3-1 *PBS NewsHour*
7:00 Nature "The Himalayas"
3-1 *Nature*
8:00 Nova "Building the Great Cathedrals"
3-1 *Nova*
9:00 Nova "Great Cathedral Mystery"
3-1 *Nova*
3-3 *Charlie Rose*
10:00 Healthy Body Healthy Mind
"MDS: A Disease of Abnormal Blood Cells Levels"
3-1 *Charlie Rose*
3-3 *Nature*
10:30 This Old House
11:00 Charlie Rose
3-1 *Tavis Smiley*
3-3 *Nova* "Building Great Cathedrals"
11:57 Star Gazers
12:00 PBS NewsHour
3-1 *Nature*
3-3 *Nova* "Great Cathedral Mystery"

Thursday 25th

- 5:00 3-1 *Classical Stretch*
5:30 3-1 *Wai Lana Yoga*
6:00 3-1 *Moyers & Company*
6:30 3-1 *Charlie Rose: The Week*
7:00 3-1 *Nature* "Himalayas"
8:00 3-1 *Nova* "Building Great Cathedrals"
9:00 3-1 *Fons & Porter's Quilting*
9:30 3-1 *Quilt in a Day*
10:00 3-1 *Knit and Crochet Now!*
10:30 3-1 *Sew it All*
11:00 3-1 *Holiday Handbells: The Raleigh Ringers*
12:00 3-1 *Nature* "Himalayas"
1:00 3-1 *Nova* "Building Great Cathedrals"
2:00 3-1 *Nova* "Great Cathedral Mystery"
3:00 3-1 *Feel Grand with Jane Seymour*
3:30 3-1 *Backstage Pass*
4:30 3-1 *Holiday Handbells: The Raleigh Ringers*
5:30 3-1 *Nightly Business Report*
6:00 3-1 *PBS NewsHour*
7:00 Frontline "From Jesus to Christ: The First Christians," Pts. 1 & 2
3-1 *Song of the Mountains*
8:00 3-1 *Vintage Red Green Show*
8:30 3-1 *New Mexico Colores!*
9:00 God's Greatest Hits
3-1 *Creative Living*
3-1 *Charlie Rose*
9:30 3-1 *You Should Know*
10:00 Angels
3-1 *Charlie Rose*
3-3 *Moyers & Company*
10:30 3-3 *Scully/The World Show*
11:00 Charlie Rose
3-1 *Tavis Smiley*
3-3 *Frontline*
12:00 PBS NewsHour
3-1 *Call the Midwife Holiday Special*

- 5:00 3-1 *Classical Stretch*
5:30 3-1 *Wai Lana Yoga*
6:00 3-1 *America's Heartland*
6:30 3-1 *Peregrine Dame*
7:00 3-1 *Song of the Mountains*
8:00 3-1 *This Old House Hour*
9:00 3-1 *Globe Trekker*
10:00 3-1 *Joy of Painting*
10:30 3-1 *Simply Painting*
11:00 3-1 *Beauty of Oil Painting*
11:30 3-1 *Welcome to My Studio*
12:00 3-1 *Woodsongs*
1:00 3-1 *Bluegrass Underground*
1:30 3-1 *Start Up*
2:00 3-1 *This Old House Hour*
3:00 3-1 *Globe Trekker*
4:00 3-1 *Rick Steves' Europe*
4:30 3-1 *Moyers & Company*
5:00 3-1 *Focus on Europe*
5:30 3-1 *Nightly Business Report*
6:00 3-1 *PBS NewsHour*
7:00 Market to Market
3-1 *Washington Week*
7:30 Consuelo Mack WealthTrack
8:00 Washington Week
3-1 *David Suchet in the Footsteps of St. Peter, Pt. 1*
8:30 Charlie Rose: The Week
9:00 American Masters
"Bing Crosby Rediscovered"
3-1 *David Suchet ... St. Peter, Pt. 2*
3-3 *Charlie Rose*
10:00 3-1 *Charlie Rose*
3-3 *Frontline* "... The First Christians"
10:30 Tales from the Royal Bedchamber
11:00 3-1 *Tavis Smiley*
11:30 Forensics: Beyond the CSI
12:00 PBS NewsHour
3-1 *Washington Week*
3-3 *Nature* "Himalayas"

Saturday 27th

- 6:00 Woodturning Workshop**
"Osage Orange Weed Pot"
6:30 American Woodshop "Kitchen Cabinet Retrofit"
7:00 Rough Cut "Windsor Chair"
7:30 Cook's Country "Colorado Chili and Slow-Cooker Baked Ziti"
8:00 America's Test Kitchen
"Quick and Easy Rib Dinner"
8:30 Christina Cooks "The Cupcake and Cookie Makeover"
9:00 Jazzy Vegetarian "Giving Thanks"
9:30 Motorweek
10:00 P. Allen Smith's Garden Home
"Shape and Form"
3-1 *This Old House Hour*
10:30 Victory Garden's Edible Feast
"Memphis"
10:57 Star Gazers
11:00 Paint This with Jerry Yarnell
"Rocky Mountain Refuge, Pt. 4"
3-1 *In Julia's Kitchen with Master Chefs*
11:30 Joy of Painting "Mountain Seclusion"
3-1 *Victory Garden's Edible Feast*
12:00 Beauty of Oil Painting "Floral Bouquet"
3-1 *This Old House*
12:30 Quilt in a Day "Contrary Wife and Broken Sugar Bowl"
3-1 *This Old House*

1:00 Why Quilts Matter "Quilt Scholarship: Romance and Reality"
3-1 *Ask This Old House*

1:30 Fons & Porter's Love of Quilting
"Fabulous Free Motion"
3-1 *Hometime*

2:00 Creative Living
3-1 *Woodwright's Shop*

2:30 Martha Stewart's Cooking School
"Potatoes"
3-1 *Motorweek*

3:00 Hometime
"Ranch Addition Roof and Siding"
3-1 *Martha Stewart's Cooking School*

3:30 This Old House
3-1 **Martha Bakes**

4:00 Ask This Old House
3-1 **History Detectives Special**

4:30 Welcome to My Studio "T for Texture"

5:00 Sewing with Nancy
"The Absolute Easiest Way to Sew, Pt. 3"
3-1 *PBS NewsHour Weekend*

5:30 Fit 2 Stitch "Sewing Myths"
3-1 *America by the Numbers*

6:00 Report from Santa Fe
3-1 *Antiques Roadshow*

6:30 America's Heartland

7:00 Lawrence Welk Show "New Year's"
3-1 *Call the Midwife Holiday Special*

8:00 To the Manor Born

8:30 Good Neighbors "The Last Posh Frock"
3-1 *Vicious Holiday Special*

9:00 Austin City Limits "Radiohead"
3-1 *Tales from the Royal Bedchamber*
3-3 *Lawrence Welk Show*

10:00 Nova "Building the Great Cathedrals"
3-1 *Austin City Limits*
3-3 *Classic Gospel*

11:00 Nature "The Himalayas"
3-1 *Nature*
3-3 *Front and Center*

12:00 Austin City Limits
3-1 *Nova*
3-3 *43rd Annual Smithville Fiddler's Jamboree*

Sunday 28th

6:00 Getting Away Together
"Best Beach Destinations"

6:30 Second Opinion "Managing Diabetes"

7:00 Antiques Roadshow "Phoenix, AZ, Pt. 1"

8:00 Classic Gospel "Mountain Homecoming"

9:00 Joy of Music "Christmas in Art and Music"

9:30 Joy of Music "Music on the Danube"

10:00 Sacred Journeys "Lourdes," Pt. 1

11:00 Globe Trekker Special "World War II"

12:00 Cultura

12:30 In Focus
3-1 *Washington Week*
1:00 3-1 *Charlie Rose: The Week*

1:30 All Aboard "East Broad Top"
3-1 *Market to Market*

2:00 Closer to Truth "Can the Divine Be a Person?"
3-1 *Religion & Ethics Newsweekly*

2:30 Well Read "Sam Kean, The Tale of the Dueling Neurosurgeons"
3-1 *Mind of a Chef*

3:00 Healthy Body Healthy Mind
"Adrenal Cancer"
3-1 *Chef's Life*

3:30 Religion & Ethics Newsweekly
3-1 *Martha Stewart's Cooking School*

4:00 Classic Gospel "George Younce"
3-1 *Nova "Building Great Cathedrals"*

5:00 PBS NewsHour Weekend
3-1 *PBS NewsHour Weekend*

5:30 McLaughlin Group
3-1 *America by the Numbers*

6:00 Moyers & Company
3-1 *To the Manor Born*

6:30 Expeditions
"Grandfather Mountain, Island in the Sky"
3-1 *Good Neighbors*

7:00 Wallis Simpson: The Secret Letters
3-1 *Masterpiece "D. Abbey 4," Pt. 8*

8:00 Masterpiece Classic
"Downton Abbey 4, Pt. 8"
9:00 3-1 *Wallis Simpson: The Secret Letters*
3-3 *Ultimate Restorations*

10:00 Dunlap and Pennington
3-1 *Austin City Limits*
3-3 *Legacy ... American Skiing*

11:00 Wallis Simpson: The Secret Letters
3-1 *Call the Midwife Holiday Special*
3-3 *Masterpiece "D. Abbey 4," Pt. 8*

12:00 Nova "Building the Great Cathedrals"

Monday 29th

5:00 3-1 *Classical Stretch*

5:30 3-1 *Wai Lana Yoga*

6:00 3-1 *Nature "Himalayas"*

7:00 3-1 *Masterpiece "D. Abbey 4," Pt. 8*

9:00 3-1 *Taste of History*

9:30 3-1 *Sara's Weeknight Meals*

10:00 3-1 *Growing a Greener World*

10:30 3-1 *P. Allen Smith's Garden Home*

11:00 3-1 *Tales from the Royal Bedchamber*

12:00 3-1 *Nature "Himalayas"*

1:00 3-1 *Masterpiece "D. Abbey 4," Pt. 8*

3:00 3-1 *Farm with Ian Knauer*

3:30 3-1 *Food Forward*

4:00 3-1 *America's Heartland*

4:30 3-1 *Tales from the Royal Bedchamber*

5:30 3-1 *Nightly Business Report*

6:00 3-1 *PBS NewsHour*

7:00 Antiques Roadshow
"Manor House Treasures"
3-1 *Antiques Roadshow*

8:00 Antiques Roadshow "Phoenix, AZ, Pt. 2"
3-1 *Independent Lens "Don't Stop Believin': Everyman's Journey"*

9:00 Heiress and Her Chateau
3-3 *Charlie Rose*

9:30 3-1 *Appalatin*

10:00 All Aboard "Narrow Gauge Passenger Chase"
3-1 *Charlie Rose*
3-3 *Antiques Roadshow*

10:30 Rick Steves' Europe "France's Loire: Chateau Country"

11:00 Antiques Roadshow
3-1 *Tavis Smiley*
3-3 *Independent Lens "... Everyman's Journey"*

11:57 Star Gazers

12:00 PBS NewsHour
3-1 *Antiques Roadshow*

Tuesday 30th

5:00 3-1 *Classical Stretch*

5:30 3-1 *Wai Lana Yoga*

6:00 3-1 *Antiques Roadshow*

7:00 3-1 *Independent Lens "... Everyman's Journey"*

8:30 3-1 *Appalatin*

9:00 3-1 *Healthy Body Healthy Mind*

9:30 3-1 *Second Opinion*

10:00 3-1 *Closer to Truth*

10:30 3-1 *Religion & Ethics Newsweekly*

11:00 3-1 *Song of the Mountains*

12:00 3-1 *Antiques Roadshow*

1:00 3-1 *Independent Lens "... Everyman's Journey"*

2:30 3-1 *Appalatin*

3:00 3-1 *Arts in Context*

3:30 3-1 *American Health Journal*

4:00 3-1 *Consuelo Mack WealthTrack*

4:30 3-1 *Scully/The World Show*

5:00 3-1 *Report from Santa Fe*

5:30 3-1 *Nightly Business Report*

6:00 3-1 *PBS NewsHour*

7:00 Sacred Journeys "Kumbh Mela," Pt. 5
3-1 *Sacred Journeys, Pt. 5*

8:00 Sacred Journeys "Osun-Osogbo," Pt. 6
3-1 *Sacred Journeys, Pt. 6*

9:00 You Should Know
3-1 *Frontline "First Christians," Pts. 3 & 4*
3-3 *Charlie Rose*

9:30 Creative Living

10:00 Frontline "From Jesus to Christ: The First Christians," Pts. 3 & 4
3-3 *Sacred Journeys "Kumbh Mela," Pt. 5*
11:00 3-1 *Charlie Rose*
3-3 *Sacred Journeys "Osun-Osogbo," Pt. 6*

12:00 PBS NewsHour
3-1 *Sacred Journeys "Kumbh Mela," Pt. 5*
3-3 *Adventists 2*

Wednesday 31st

5:00 3-1 *Classical Stretch*

5:30 3-1 *Wai Lana Yoga*

6:00 3-1 *Sacred Journeys "Kumbh Mela," Pt. 5*

7:00 3-1 *Sacred Journeys "Osun-Osogbo," Pt. 6*

8:00 3-1 *Adventists 2*

9:00 3-1 *Aviators*

9:30 3-1 *Rick Steves' Europe*

10:00 3-1 *American Woodshop*

10:30 3-1 *Woodturning Workshop*

11:00 3-1 *David Suchet in the Footsteps of St. Peter, Pt. 2*

12:00 3-1 *Sacred Journeys "Kumbh Mela," Pt. 5*

1:00 3-1 *Sacred Journeys "Osun-Osogbo," Pt. 6"*

2:00 3-1 *Adventists 2*

3:00 3-1 *Tina's Ageless Kitchen*

3:30 3-1 *Christina Cooks*

4:00 3-1 *Cook's Country*

4:30 3-1 *David Suchet ... St. Peter, Pt. 2*

5:30 3-1 *Nightly Business Report*

6:00 3-1 *PBS NewsHour*

7:00 Live From Lincoln Center "Gershwin Celebration at the New York Philharmonic's New Year's Eve Concert"
3-1 *Live From Lincoln Center*

9:00 Michael Feinstein New Year's Eve at the Rainbow Room
3-1 *Michael Feinstein New Year's Eve*
3-3 *Charlie Rose*

10:00 Healthy Body Healthy Mind "Learning About Primary Immunodeficiency"
3-1 *Charlie Rose*
3-3 *Live From Lincoln Center "Gershwin"*

10:30 This Old House

11:00 Charlie Rose
3-1 *Tavis Smiley*

11:57 Star Gazers

12:00 PBS NewsHour
3-1 *Live From Lincoln Center "Gershwin Celebration"*
3-3 *Michael Feinstein New Year's Eve*

◆ KENW/KMTH-FM LOG ◆

Portales, NM, 89.5 MHz — Maljamar, NM, 98.7 MHz — Tucumcari, NM, 88.9 MHz —
Des Moines, NM, 88.5 MHz — Ruidoso, NM, 88.5 MHz — Raton, NM, 88.1 MHz

Translators: Apache Springs, 90.9 MHz; Clayton, 93.5 MHz; Des Moines, 106.1 MHz; Ft. Sumner, 91.7 MHz; Las Vegas, 107.1 MHz; Midland, TX - 99.5 MHz; Roswell, 91.1 MHz; Ruidoso, 89.3 MHz; Wagon Mound, 92.1 MHz.

Sundays

8:00 a.m. WITH HEART AND VOICE

- Dec 7 Advent 2
- Dec 14 Advent 3
- Dec 21 Advent 4 and Christmas
- Dec 28 Christmastide

9:00 a.m. FOOTLIGHT PARADE

- Dec 7 A Tribute to Harold Arlen, Pt. 1
- Dec 14 A Tribute to Harold Arlen, Pt. 2
- Dec 21 1947 on Stage
- Dec 28 A Visit with Martin Charnin, Pt. 1

10:00 a.m. RADIO LAB

- Dec 7 Where Am I?
- Dec 14 Inheritance
- Dec 21 TBD Podmash
- Dec 28 Lost and Found

11:00 a.m. FRESH AIR WEEKEND

12:00 p.m. PEOPLE'S PHARMACY

1:00 p.m. THIS AMERICAN LIFE

2:00 p.m. DEMOCRACY NOW!

3:00 p.m. MOUNTAIN STAGE

- Dec 7 Bela Fleck & Abigail Washburn; Kate Miller-Heidke; Janiva Magness; Storyman; Gabriel Kahane
- Dec 14 St. Paul and the Broken Bones; Junior Brown; Catherine Russell
- Dec 21 Holly Williams; Gary Nicholson; Missy Raines & the New Hip; Sam Baker; Charlie Faye
- Dec 28 Bettye LaVette; David Broza; Matrimony; Noah Gundersen; Declan O'Rourke

5:00 p.m. CELTIC CONNECTIONS

- Dec 7 New Releases
- Dec 14 The Ones We Miss
- Dec 21 A Celtic Christmas
- Dec 28 Best of 2014

6:00 p.m. ALL THINGS CONSIDERED

7:00 p.m. CIVIC ORCHESTRA OF CHICAGO

- Dec 7 CHANG: Evolution of the Piano Concerto NOTE: This program contains several speakers, including Emanuel Ax and Gerard McBurney.
- Dec 14 BEETHOVEN: Symphony No. 2
- BARTOK: Suite from *The Miraculous Mandarin*
- VERDI: Overture from *La Forza del Destino*

- Dec 21 WAGNER: Prelude and Liebestode from *Tristan und Isolde*
- RAVEL: *Gaspard de la nuit*
- WEBERN: *Un ob die Wolke; Wie nachte mir der Schummer*
- Dec 28 SCRIBABIN: *The Poem of Ecstasy*, Op. 54
- SIBELIUS: *Legends*, Op. 22, excerpts
- STRAUSS: *Solome*, "Dance of the Seven Veils"

8:00 p.m. SANTA FE CHAMBER MUSIC FESTIVAL

- Dec 7 BENJAMIN: Oboe Concerto on Themes of Cimarosa
- TCHAIKOVSKY: *Souvenir de Florence*, Op. 70

- Dec 14 BEETHOVEN: Quintet for Piano and Winds in E-Flat, Op. 16
- SCHULHOFF: Sextet for Strings

- Dec 21 SCHUMANN: *Fairy Tales*, Op. 132
- BRAHMS: String Quartet No. 3 in B-Flat, Op. 67

- Dec 28 STRAVINSKY: Three Movements from *Petrouchka*
- BRAHMS: Piano Trio No. 1 in B, Op. 8

9:00 p.m. THE ROMANTIC HOUR

- Dec 7 The romantic life of Dylan Thomas
- Dec 14 Letters of the Civil War
- Dec 21 Verse of Kahlil Gibran
- Dec 28 A variety of beautiful romantic thoughts.

10:00 p.m. WEEKEND PERFORMANCE TODAY

- 11:00 p.m. MUSIC OUT OF THE NIGHT AND INTO THE MORNING until 5:00 a.m. when **Morning Edition** begins.

Mondays

7:00 p.m. CHICAGO SYMPHONY ORCHESTRA

- Dec 1 STRAVINSKY: *Elegy for JFK*
- MAHLER: Symphony No. 9; *Blumine*
- GABRIELI: *Canzonae*

- Dec 8 RIGEL: Symphony in c
- HAYDN: Piano Concerto in D
- KRAUS: Symphony in e
- BEETHOVEN: Symphony No. 1 in C
- BRAHMS: Symphony No. 1

- Dec 15 DUKAS: *La Peri*, excerpts
- CONNESON: *pour sortir au jour* (CSO commission)
- SAINT-SAENS: Symphony No. 3
- WILLIAMS: Violin Concerto
- POULENC: Gloria

- Dec 22 STRAUSS: *Die Fledermaus* Overture
- BEETHOVEN: Piano Concerto No. 1 in C, Op. 15; *Fidelio*, Op. 72b
- DVORAK: Symphony No. 8 in G, Op. 88
- HAYDN: Sinfonia Concertante in B-Flat

- Dec 29 PROKOFIEV: Piano Concerto No. 2
- WALTON: Symphony No. 1
- POULENC: Concerto for Two Pianos in d
- WILLIAMS: Excerpt from *Lincoln* soundtrack

9:00 p.m. PERFORMANCE TODAY

- 11:00 p.m. MUSIC OUT OF THE NIGHT AND INTO THE MORNING until 5:00 a.m. when **Morning Edition** begins.

Tuesdays

7:00 p.m. NEW YORK PHILHARMONIC

- Dec 2 COPLAND: *El Salon Mexico*
- RAVEL: *Gaspard de la nuit; Bolero*
- ROUSE: Flute Concerto
- Dec 9 STRAVINSKY: *The Fairy's Kiss; Petrushka*

- Dec 16 TURNAGE: *Frieze*
- BEETHOVEN: Symphony No. 9

- Dec 23 R. STRAUSS: *Don Juan; Also sprach Zarathustra*

- Dec 30 HANDEL: Messiah

9:00 p.m. PERFORMANCE TODAY

- 11:00 p.m. MUSIC OUT OF THE NIGHT AND INTO THE MORNING until 5:00 a.m. when **Morning Edition** begins.

Wednesdays

7:00 p.m. DEUTSCHE WELLE FESTIVAL CONCERTS

- Dec 3 BEETHOVEN: Symphony No. 1 in C, Op. 21; Symphony No. 2 in D, Op. 36; Symphony No. 3 in E-Flat, Op. 55, "Eroica"

- Dec 10 BEETHOVEN: Symphony No. 4 in B-Flat, Op. 60; Symphony No. 5 in c, Op. 67

- Dec 17 BEETHOVEN: Symphony No. 6 in F, Op. 68, "Pastoral"; Symphony No. 7 in A, Op. 92

- Dec 24 KENW/KMTH-FM presents continuous holiday music from 7:00 pm on the 24th until 11:00 pm on the 25th.

- Dec 31 BEETHOVEN: Symphony No. 8 in F, Op. 93; Symphony No. 9 in d, Op. 125

9:00 p.m. PERFORMANCE TODAY

- 11:00 p.m. MUSIC OUT OF THE NIGHT AND INTO THE MORNING until 5:00 a.m. when **Morning Edition** begins.

Thursdays

7:00 p.m. COLLECTORS' CORNER with HENRY FOGEL

- Dec 4 The First Recording of Authentic Orchestration of the Ragtime Opera

- Dec 11 Frank Shipway Conducts
- Dec 18 Grigory Ginzburg Plays Russian Music

- Dec 25 KENW/KMTH-FM presents continuous holiday music from 7:00 pm on the 24th until 11:00 pm on the 25th.

9:00 p.m. PERFORMANCE TODAY

- 11:00 p.m. MUSIC OUT OF THE NIGHT AND INTO THE MORNING until 5:00 a.m. when **Morning Edition** begins.

Fridays

7:00 p.m. CONCIERTO

8:00 p.m. FIESTA! with ELBIO BARILARI

- Dec 5 Music and Visual Arts
- Dec 12 Fresh Ink: Works Premiered During the Last Year

- Dec 19 Venezuelan Composer Ricardo Lorenz

- Dec 26 Music of the Night

9:00 p.m. PERFORMANCE TODAY

- 11:00 p.m. MUSIC OUT OF THE NIGHT AND INTO THE MORNING until 5:00 a.m. when **People's Pharmacy** begins.

Saturdays

8:00 a.m. **BEST OF CAR TALK**
 9:00 a.m. **WAIT WAIT DON'T TELL ME**
 10:00 a.m. **THE BIONEERS: Revolution from the Heart of Nature**
 10:30 a.m. **NEW LETTERS ON THE AIR**
 11:00 a.m. **METROPOLITAN OPERA**
 Dec 6 ROSSINI: *Il Barbiere di Siviglia*
 Dec 13 WAGNER: *Die Meistersinger von Nurnberg* **NOTE:** Begins at 10:00 am
 Dec 20 MOZART: *Le Nozze di Figaro*
 Dec 27 VERDI: *La Traviata*
 2:00 p.m. **MAD ABOUT MUSIC**
 Dec 6 Former President and Chairman of the Chicago Bears, Michael McCaskey, on how Beethoven helped his son to walk
 Dec 13 Pre-empted because of long-running Metropolitan Opera program
 Dec 20 Pre-empted because of long-running opera program
 Dec 27 Former President of the World Bank, James Wolfensohn, on being a groupie of Leonard Bernstein
 3:00 p.m. **CLASSICAL GUITAR ALIVE!**
 4:00 p.m. **A PRAIRIE HOME COMPANION**
 Dec 6 Live at The Town Hall in NYC
 Dec 13 Live at the Fitzgerald Theater in St. Paul, MN

Dec 20 Live at the Fitzgerald Theater in St. Paul, MN
 Dec 27 TBA
 6:00 p.m. **ALL THINGS CONSIDERED**
 7:00 p.m. **MARIAN McPARTLAND's PIANO JAZZ**
 Dec 6 Liz Story, pianist/composer
 Dec 13 Mel Torme, singer
 Dec 20 George Shearing, pianist
 Dec 27 Michel Petrucciani, pianist
 8:00 p.m. **SWINGIN' DOWN THE LANE**
 Dec 6 Big Band Era from A to Z – Fifth in a series saluting music headliners
 Dec 13 In Memoriam: Gerald Wilson – Arranger-bandleader died at age 96
 Dec 20 Ralph Marterie Centennial – Trumpeter led his own successful band
 Dec 27 Louis Jordan – Interview with Stephen Koch, his biographer
 9:00 p.m. **ALL THESE BLUES WITH ROGER GATCHET**
 10:00 p.m. **DREAMFARM RADIO**
 11:00 p.m. **JAZZ NIGHT**
 Dec 6 Listen Closely
 Dec 13 Ellis Marsalis at 80
 Dec 20 2014 in Review
 Dec 27 Opening Night: Chucho Valdes, Pedrito Martinez & Wynton Marsalis

12:00 a.m. **MUSIC OUT OF THE NIGHT AND INTO THE MORNING** until 6:00 a.m. when **Weekend Edition** begins.

KENW Public Radio "Fall Harvest" Drive

We are especially grateful to our many listeners who helped us raise the necessary funds to continue to bring you the programming you enjoy. A very special "thank you" goes out to the following Challenge Grant Donors who very generously offered dollar-for-dollar matching grants to all pledges that came in from their communities:

*Candlewood Cards & Gifts of Carlsbad, NM – \$1000 grant

*The Toles Company of Roswell, NM – \$1000 grant

*Benjamin Boyd of Cannon Air Force Base, NM – \$1000

We also want to thank our volunteers who donated their valuable time and talents both on-air and behind-the-scenes. And another thanks goes out to Daylight Donuts & Papa Murphy's of Portales, who provided delicious snacks for our volunteers throughout the drive.

Thanks to you for your support in making this drive another successful one!

Amie Griffith
Development Director

FM Radio Week-at-a-Glance

	Sunday	Monday	Tuesday	Wednesday	Thursday	Friday	Saturday	Monday through Friday
5:00							5:00 a.m. People's Pharmacy	Regional Newscasts at: 5:33, 6:33, 7:33, and 10:06 a.m. 12:06, 2:06, and 5:33 p.m. 8:01 Marketplace Report/Ski Report 8:15 Current Cast 8:20 Nature Notes (Tu) Travelers in the Night (W) Playa Country (Th) 8:30 Health in a Heartbeat 8:45 Insight 9:00 Weather/News 9:05 Dateline New Mexico 9:15 Marketplace Tech Report 9:20 A Southwest Spotlight (F) 9:30 Radio MD News 9:45 New Mexico Matters 10:00 News/Statewide News 10:15 Engines of Our Ingenuity 10:30 Composers' Datebook 10:45 Writer's Almanac 11:00 Weather/News 11:15 Melinda's Garden Moment 11:30 Pulse of the Planet 11:45 Isla Earth 12:00 News/Statewide News 12:15 Community Calendar 12:30 Moment in Time/Ski Report 12:35 ENMU Fine Arts Venue (Th) 12:45 Arts and Science 1:00 Weather/News 1:15 Sound Print 1:30 Loh Down on Science 1:45 A Moment of Science 2:00 News/Statewide News 2:15 Bird Note 2:20 A Southwest Spotlight (W) 2:30 America's Storyteller 2:45 90 Second Naturalist 3:00 Weather/News 3:06 Innovation Now/Fitness Minute 3:15 The Plant Detective 3:25 Dateline New Mexico/Ski Report 3:55 Health Care 411 (Th) 6:57 Weather/Climate Connections 9:00 Weather/News 12:00/ 3:00 a.m. Weather/News
6:00	Weekend Edition	Morning Edition	Morning Edition	Morning Edition	Morning Edition	Morning Edition	6:00 a.m. Weekend Edition	
7:00							8:00 a.m. Car Talk	
8:00	With Heart and Voice						9:00 a.m. Wait, Wait... Don't Tell Me	
9:00	Footlight Parade	Music	Music	Music	Music	Music	10:00 a.m. Bioneers	
10:00	Radiolab	News	News	News	News	News	10:30 a.m. New Letters	
11:00	Fresh Air Weekend with Terry Gross	&	&	&	&	&	11:00 a.m. Met Opera	
12:00	People's Pharmacy (R)	Features	Features	Features	Features	Features	Mad About Music	
1:00	This American Life						3:00 p.m. Classical Guitar	
2:00	Democracy Now!						4:00 p.m. Prairie Home Companion	
3:00		Parents Journal	Knowledge	51 Percent	Moyers & Co.	Says You!		
3:30	Mountain Stage	Marketplace	Marketplace	Marketplace	Marketplace	Marketplace		
4:00		All Things Considered	All Things Considered	All Things Considered	All Things Considered	All Things Considered		
4:30								
5:00	Celtic Connections							
6:00	All Things Considered	PBS NewsHour	PBS NewsHour	PBS NewsHour	PBS NewsHour	PBS NewsHour	All Things Considered	
7:00	Chicago Civic Orchestra	Chicago Symphony Orchestra	New York Philharmonic	Deutsche Welle Festival Concerts	Collectors' Corner	Concierto with Frank Dominguez	Marian McPartland	
8:00	Santa Fe Chamber					Fiesta! with Elbio Barilari	Swingin' Down the Lane	
9:00	The Romantic Hours	Performance Today	Performance Today	Performance Today	Performance Today	Performance Today	All These Blues with Roger Gatchet	
10:00	Performance Today						DreamFarm Radio	
11:00	Classical Music Out of the Night until 5:00 a.m.	Classical Music Out of the Night until 5:00 a.m.	Classical Music Out of the Night until 5:00 a.m.	Classical Music Out of the Night until 5:00 a.m.	Classical Music Out of the Night until 5:00 a.m.	Classical Music Out of the Night until 5:00 a.m. when People's Pharmacy begins.	Jazz Night in America	
							Classical Music Out of the Night until 6:00 a.m.	

BUSINESS FRIENDS

 <p>Taylor Water Well Service Water Well Drilling Pump Sales & Service Clim Taylor Carlsbad, NM A Prairie Home Companion, FM Wait...Don't Tell Me, FM Radio Lab, FM</p>	 <p>Nayajo Refining Company Artesia, NM Music & News, FM</p>	 <p>The Citizens Bank Clovis, Fort Sumner, Texico, NM Market to Market</p>	 <p>CJ's Pharmacy... At your Service Portales, NM Family Health, FM Deutsche Welle Festival, FM Classical Guitar Alive, FM Mt. Stage, FM</p>	 <p>Merrill Lynch Bank of America Corporation Roswell Branch Office Tel: 575.622.1642 Moyers & Company</p>	 <p>Portales NEWS-TRIBUNE Portales, NM Austin City Limits</p>
 <p>Hobbs Chamber of Commerce Hobbs, NM Masterpiece, Nova</p>	 <p>Clovis Community College Cultural Art Series Primetime Programming, TV</p>	 <p>Roswell, NM Classic Gospel</p>	<p>This space could be yours! For Underwriting opportunities, please call toll-free (888) 367-5369. Ask for Rena for TV, Amie for FM</p>	 <p>PLATEAU Evening News/ Public Affairs BBC World News News 3 New Mexico</p>	 <p>Featherstone Development Corporation Roswell, NM Morning Edition, FM Jazz Programming, FM</p>
<p>New Mexico Humanities Council Albuquerque, NM (505) 277-3217 www.nmhum.org Morning Edition, FM Weekend Edition, FM</p>	<p>Lindsey Law Firm Daniel R. Lindsey Brett J. Carter Clovis, NM Nova</p>	 <p>Featherstone Development Corporation Roswell, NM Nature, Nightly Business Report, Star Gazers</p>	 <p>FEC A Touchstone Energy Cooperative Farmers' Electric Cooperative, Inc. of New Mexico Clovis, NM Ask This Old House</p>	 <p>Ruidoso, NM Morning Edition, FM Weekend Edition, FM</p>	<p>Roswell Jazz Festival Roswell, NM Piano Jazz, FM Jazz Programming, FM</p>
<p>Maddox, Holloman & Moran, P.C., Attorneys and Counselors at Law Hobbs, NM Morning Edition All Things Considered, FM</p>	<p>This space could be yours! For Underwriting opportunities, please call toll-free (888) 367-5369. Ask for Rena for TV, Amie for FM</p>	 <p>Phil Brewer ATTORNEY & COUNSELOR Roswell, NM Car Talk, FM</p>	<p>This space could be yours! For Underwriting opportunities, please call toll-free (888) 367-5369. Ask for Rena for TV, Amie for FM</p>	 <p>CJ's Pharmacy... At your Service Portales, NM Antiques Roadshow, Healthy Body, Healthy Mind, McLaughlin Group, Sportslook</p>	 <p>Ford MERCURY LINCOLN Permian Ford-Lincoln-Mercury, Inc. Hobbs, NM Weekend ATC, FM All Things Considered, FM Car Talk, FM</p>
 <p>The Sewing Basket Clovis, NM Quilting Programs</p>	 <p>VALLEY MOWER CLINIC, INC Clovis, NM P. Allen Smith's Garden to Table</p>	<p>This space could be yours! For Underwriting opportunities, please call toll-free (888) 367-5369. Ask for Rena for TV, Amie for FM</p>	<p>Atwood, Malone, Turner & Sabin Attorneys at Law Roswell, NM Deutsche Welle Festival, FM All Things Considered, FM</p>	<p>Penasco Valley Telecommunications Health Show, Car Talk, Mountain Stage FM</p>	 <p>Haver Operating Company Roswell, NM American Experience, Masterpiece, Nova, PBS NewsHour</p>
 <p>Esbach Fine Arts Albuquerque, NM Antiques Roadshow, Masterpiece, PBS NewsHour</p>	 <p>NMDA New Mexico Department of Agriculture Las Cruces, NM America's Heartland</p>	 <p>Goodwill Industries Morning Edition, FM All Things Considered, FM</p>	 <p>Roosevelt County Electric Cooperative Portales, NM Antiques Roadshow</p>	 <p>WILL FERGUSON & ASSOCIATES Albuquerque, NM BBC World News PBS NewsHour</p>	 <p>CHAVES COUNTY FARM AND LIVESTOCK BUREAU Dexter and Roswell, NM America's Heartland</p>
<p>Names and Numbers Telephone Book Evening News/Public Affairs Programming News 3 New Mexico</p>	<p>Hinkle, Hensley, Shanor & Martin, L.L.P. Roswell, Santa Fe, Artesia, NM Morning Edition, FM Prairie Home Companion, FM</p>	 <p>Muleshoe State Bank Muleshoe, TX Nature</p>	<p>This space could be yours! For Underwriting opportunities, please call toll-free (888) 367-5369. Ask for Rena for TV, Amie for FM</p>	<p>James Polk Stone Community Bank Clovis, Eunice, Hagerman, Hobbs, Portales, Roswell Austin City Limits</p>	<p>Living Desert Zoo & Gardens State Park Open Every Day Except Christmas Carlsbad, NM Austin City Limits, Nature, PBS NewsHour</p>
 <p>Clovis News Journal Clovis, NM This Old House</p>	 <p>SECURITY STATE BANK Farwell, TX Antiques Roadshow</p>	 <p>EASTERN NEW MEXICO UNIVERSITY Portales, NM Austin City Limits</p>	 <p>High Country Agency, Inc. Ruidoso, NM Morning Edition, FM</p>	<p>First Presbyterian Church of Roswell Roswell, NM With Heart and Voice, FM</p>	 <p>THE BOX Clovis and Portales Wait, Wait...Don't Tell Me, FM</p>

A to Z — Channel HD3-1 — December 2014

50 Years with Peter, Paul and Mary — Thursday, 4th, 8:30 p.m.
Adventists 2 — Wednesday, 31st, 8:00 a.m./2:00 p.m.
America by the Numbers — Saturdays, 5:30 p.m.;
Sundays, 5:30 p.m. (except 7th)
American Health Journal — Tuesdays, 3:30 p.m.
American Masters "Bing Crosby Rediscovered" — Wednesday, 3rd, 7:00 p.m.
American Woodshop — Wednesdays, 10:00 a.m.
America's Heartland — Mondays, 4:00 p.m.; Fridays, 6:00 a.m.
Angels — Monday, 8th, 9:00 p.m.; Tuesday, 9th, 8:00 a.m./2:00 p.m.
Antiques Roadshow — Mondays, 7:00 p.m./12:00 midnight (except 1st);
Tuesdays, 6:00 a.m./12:00 noon; Saturdays, 6:00 p.m. (except 6th)
Appalatin — Monday, 29th, 9:30 p.m.; Tuesday, 30th, 8:30 a.m./2:30 p.m.
Arts in Context — Tuesdays, 3:00 p.m.
Ask This Old House — Saturdays, 1:00 p.m. (except 20th)
Austin City Limits — Saturdays, 10:00 p.m.; Sundays, 10:00 p.m. (10:30 p.m. on 21st)
Aviators — Wednesday, 9:00 a.m. (begins 17th)
Backstage Pass — Thursday, 3:30 p.m.
Beauty of Oil — Fridays, 11:00 a.m.
Being with the Energy of Forgiveness — Wednesday, 17th, 11:30 a.m./5:00 p.m.
Bernardin — Wednesday, 3rd, 7:00 a.m./1:00 p.m.

Best of 50s Pop — Tuesday, 2nd, 7:00 p.m.
Bluegrass Underground — Friday, 1:00 p.m.
Call the Midwife Holiday Special — Thursday, 25th, 12:00 midnight;
Saturday, 27th, 7:00 p.m.; Sunday, 28th, 11:00 p.m.)
Candy Bomber — Friday, 5th, 7:00 p.m.
Champion Trees — Thursday, 4th, 7:00 a.m./12:00 noon
Charlie Rose — Monday-Friday, 10:00 p.m.
(10:30 p.m. 2nd-4th; 11:00 p.m. 23rd, 30th)
Charlie Rose: The Week — Fridays, 7:30 p.m. (except 6th);
Sundays, 1:00 p.m.; Thursdays, 6:30 a.m.
Chef's Life — Sundays, 3:00 p.m.
(except 7th; Saturday, 20th, 12:00 noon to 3:30 p.m.)
Chef's Life Holiday Special — Tuesday, 16th, 9:00 p.m.;
Wednesday, 17th, 8:00 a.m./2:00 p.m.; Saturday, 20th, 4:00 p.m.)
Christina Cooks — Wednesdays, 3:30 p.m.
Christmas in Norway with the St. Olaf Choir — Saturday, 20th, 8:00 p.m.
Christmas on the Danube — Monday, 22nd, 8:30 a.m./2:30 p.m.
Christmas with the Mormon Tabernacle Choir — Saturday, 20th, 7:00 p.m.
Classical Stretch — Monday-Friday, 5:00 a.m.
Closer to Truth — Tuesdays, 10:00 a.m.



- Consuelo Mack WealthTrack** – Tuesdays, 4:00 p.m.
Cook's Country – Wednesdays, 4:00 p.m.
Counting on Birds – Wednesday, 10th, 8:00 a.m./2:00 p.m.
Craftsman's Legacy – Mondays, 3:30 p.m. (ends 15th)
Creative Living – Thursdays, 9:00 p.m. (except 4th)
David Suchet in the Footsteps of St. Peter (2 1-hr. Pts.)
 Wednesdays, 11:00 a.m./4:30 p.m. (24th, 31st);
 Friday, 26th, 8:00 p.m. (Pt. 1)/9:00 p.m. (Pt. 2)
Deepak Chopra: Future of God 0 Tuesday, 2nd, 9:00 p.m.
Don't Worry, Retire Happy – Monday, 1st, 8:30 p.m.
Downton Abbey Rediscovered – Sunday, 7th, 5:30 p.m.; Saturday, 13th, 8:30 p.m.
Dropping Back In – Friday, 4:00 p.m. (ends 19th)
El Taller – Tuesday, 2nd, 8:00 a.m./2:00 p.m.
Emery Blagdon & His Healing Machine – Wednesday, 17th, 11:00 a.m./4:30 p.m.
European Christmas Markets – Thursday, 11th, 11:30 a.m./5:00 p.m.
Farm – Mondays, 3:00 p.m.
Farm Holiday Special – Thursday, 11th, 11:00 a.m./4:30 p.m.
Fast Metabolism Revolution – Monday, 1st, 7:00 p.m.
Feel Grand with Jane Seymour – Thursdays, 3:00 p.m.
First Silent Night – Wednesday, 3rd, 8:00 a.m./2:00 p.m.
Focus on Europe – Friday, 5:00 p.m.
Fons & Porter's Love of Quilting – Thursdays, 9:00 a.m.
Food Forward – Mondays, 3:30 p.m. (begins 22nd)
Frank Clarke Simply Painting: China – Fridays, 10:30 a.m.
Free or Equal: Personal View – Wednesday, 3rd, 11:00 a.m./4:30 p.m.
Front and Center IV – Mondays, 12:00 noon
Frontline –
 "Madoff Affair" – Tuesday, 9th, 9:00 p.m.; Wednesday, 10th, 11:00 a.m./4:30 p.m.
 "From Jesus to Christ: The First Christians" (2 2-hr. Pts.) –
 Tuesdays, 9:00 p.m. (23rd, 30th)
Globe Trekker – Fridays, 9:00 a.m./3:00 p.m.
Good Neighbors – Sundays, 6:30 p.m. (except 7th)
Growing a Greener World – Mondays, 10:00 a.m.
Healthy Body Healthy Mind – Tuesdays, 9:00 a.m.
History Detectives – Saturdays, 4:00 p.m. (except 20th)
Holiday Handbells: Raleigh Ringers – Thursday, 25th, 11:00 a.m./4:30 p.m.
Hometime – Saturdays, 1:30 p.m. (except 20th)
Ice Warriors – USA Sled Hockey – Monday, 1st, 6:00 a.m./12:00 noon
In Julia's Kitchen – Saturdays, 11:00 a.m.
Independent Lens –
 "All of Me: Story of Love, Loss, and Last Resort" – Monday, 8th, 8:00 p.m.; Tuesday, 9th, 7:00 a.m./1:00 p.m.; Saturday, 13th, 9:00 p.m.
 "Trials of Muhammad Ali" – Monday, 22nd, 8:00 p.m.;
 Tuesday, 23rd, 7:00 a.m./1:00 p.m.; Saturday, 8th, 9:00 p.m.
 "Don't Stop Believin': Everyman's Journey" – Monday, 29th, 8:00 p.m.;
 Tuesday, 30th, 7:00 a.m./1:00 p.m.
It's Sew Easy – Thursdays, 10:30 a.m. (ends 4th)
Journey to Planet Earth "Severe Weather, Climate Change, and National Security" – Monday, 15th, 8:00 p.m.; Tuesday, 16th, 7:00 a.m./1:00 p.m.
Joy of Painting – Fridays, 10:00 a.m.
Knit and Crochet Now! – Thursdays, 10:00 a.m.
Kristin Chenoweth – Coming Home – Saturday, 6th, 8:30 p.m.
Legacy: Austria's Influence on American Skiing – Mondays, 11:00 a.m./4:30 p.m.
Legends of the Sky: The Jenny – Monday, 15th, 9:00 p.m.;
 Tuesday, 16th, 8:00 a.m./2:00 p.m.
Live From Lincoln Center –
 "Curtain Up: School of American Ballet" – Saturday, 13th, 7:00 p.m.
 "Gershwin Celebration at the New York Philharmonic" –
 Wednesday, 31st, 7:00 p.m./12:00 midnight
Market to Market – Sundays, 1:30 p.m.
Martha Bakes – Saturdays, 3:30 p.m. (except 20th)
Martha Stewart's Cooking School – Saturdays, 3:00 p.m.; (except 20th)
 Sundays, 3:30 p.m. (except 7th)
Masterpiece Classic "Downton Abbey IV" –
 Episode 1 – Sunday, 7th, 7:00 p.m./11:00 p.m.;
 Monday, 8th, 6:00 a.m./12:00 noon
 Episode 2 – Sunday, 7th, 9:00 p.m.; Monday, 8th, 8:00 a.m./2:00 p.m.
 Episode 3 – Sunday, 14th, 7:00 p.m./11:00 p.m.;
 Monday, 15th, 6:00 a.m./12:00 noon
 Episode 4 – Sunday, 14th, 8:00 p.m./12:00 midnight;
 Monday, 15th, 7:00 a.m./1:00 p.m.
 Episode 5 – Sunday, 14th, 9:00 p.m.; Monday, 15th, 8:00 a.m./2:00 p.m.
 Episode 6 – Sunday, 21st, 8:00 p.m.; Monday, 22nd, 6:00 a.m./12:00 noon
 Episode 7 – Sunday, 21st, 9:00 p.m.; Monday, 22nd, 7:00 a.m./1:00 p.m.
 Episode 8 – Sunday, 28th, 7:00 p.m.; Monday, 29th, 7:00 a.m./1:00 p.m.
Michael Feinstein New Year's Eve – Wednesday, 31st, 9:00 p.m.
Mind of a Chef – Sundays, 2:30 p.m.
Motorweek – Saturdays, 2:30 p.m. (except 20th)
Moyers & Company – Thursdays, 6:00 a.m.; Fridays, 4:30 p.m.
Nature – Wednesdays, 7:00 p.m. (except 3rd, 31st)/12:00 midnight (except 31st);
 Thursdays, 7:00 a.m./12:00 noon (except 4th);
 Saturdays, 11:00 p.m.; Mondays, 6:00 a.m. (29th only)
Nazi Mega Weapons "U-Boat Base" – Wednesday, 10th, 9:00 p.m.;
 Thursday, 11th, 2:00 p.m.
New Mexico Colores – Thursdays, 8:30 p.m. (except 4th)
Night Before Christmas Carol – Thursday, 11:00 a.m./4:30 p.m.
Nightly Business Report – Monday-Friday, 5:30 p.m.
Nova – Wednesdays, 8:00 p.m. (except 3rd; also 9:00 p.m. on 17th, 24th);
 Thursdays, 8:00 a.m./1:00 p.m. (except 4th; also 2:00 p.m. 18th, 25th);
 Saturdays, 12:00 midnight; Sundays, 4:00 p.m. (except 7th)
Our American Family: The Barreras –
 Monday, 22nd, 9:30 p.m./Tuesday, 23rd, 8:30 a.m./2:30 p.m.
P. Allen Smith's Garden to Table – Mondays, 10:30 a.m.
PBS Newshour – Monday-Friday, 6:00 p.m.
PBS Newshour: Weekend – Saturday-Sunday, 5:00 p.m.
Peregrine Dame – Friday, 6:30 a.m.
Perfect Balance – Tuesday, 2nd, 7:00 a.m./1:00 p.m.
Pink Room – Wednesday, 3rd, 6:00 a.m./12:00 noon
Prange & Pearl Harbor: Magnificent Obsession – Thursday, 4th, 2:00 p.m.
Quilt in a Day – Thursdays, 9:30 a.m.
Red Green Show – Thursdays, 8:00 p.m. (except 4th)
Religion & Ethics Newsweekly – Tuesdays, 10:30 a.m.;
 Sundays, 2:00 p.m. (except 7th)
Report from Santa Fe – Tuesdays, 5:00 p.m.
Richard Pryor: Icon – Sunday, 23rd, 9:00 p.m.
Rick Steves' Europe – Wednesday, 9:30 a.m.; Fridays, 4:00 p.m. (begins 26th)
Rickover: Birth of Nuclear Power – Tuesday, 9th, 7:00 p.m./12:00 mid.;
 Wednesday, 10th, 6:00 a.m./12:00 noon
Rock Rewind 1965-1967 – Saturday, 6th, 7:00 p.m.
Roosevelts: An Intimate History – Fridays, 8:00 p.m. (ends 19th)
Rule – Monday, 1st, 7:30 a.m./1:30 p.m.
Sacred Journeys (6 Pts.) – Tuesdays, 7:00 p.m. & 8:00 p.m./12:00 midnight
 (begins 16th); Wednesdays, 6:00 a.m. & 7:00 a.m./12:00 noon & 1:00 p.m.
 (begins 17th)
Sara's Weeknight Meals – Mondays, 9:30 a.m.
Scully/The World Show – Tuesdays, 4:30 p.m.
Second Opinion – Tuesdays, 9:30 a.m.
Secrets of Chatsworth – Tuesday, 2nd, 12:00 midnight
Sew It All – Thursdays, 10:30 a.m. (begins 11th)
Shaun Johnson Big Band Experience – Saturday, 20th, 9:00 p.m.
Silent Storytellers – Thursday, 4th, 8:00 a.m./1:00 p.m.
Skinny Gut Vibrant You – Thursday, 4th, 7:00 p.m.
Song of the Mountains – Tuesdays, 11:00 a.m.;
 Thursdays, 7:00 p.m. (except 4th); Fridays, 7:00 a.m.
Songs to Keep: Treasures of an Adirondack Folk Collector –
 Thursday, 4th, 11:00 a.m./4:30 p.m.
Start Up – Fridays, 1:30 p.m.
Tales from the Royal Bedchamber – Sunday, 21st, 7:00 p.m./11:30 p.m.;
 Saturday, 27th, 9:00 p.m.; Monday, 29th, 11:00 a.m./4:30 p.m.
Taste of History – Mondays, 9:00 a.m.
Tavis Smiley – Monday-Friday, 11:00 p.m./11:30 p.m.
This Old House – Saturdays, 12:00 noon/12:30 p.m. (except 20th)
This Old House Hour – Thursdays, 12:00 midnight (except 25th);
 Fridays, 8:00 a.m./2:00 p.m.; Saturdays, 10:00 a.m.
Tina's Ageless Kitchen – Wednesdays, 3:00 p.m.
To the Manor Born – Sundays, 6:00 p.m. (except 7th)
Tracks of Imagination – Wednesday, 24th, 8:00 a.m./2:00 p.m.
Trains Around North America – Sunday, 7th, 2:00 p.m.
Vicious Holiday Special – Saturday, 27th, 8:30 p.m.
Victory Garden's Ediblefeast – Saturdays, 11:30 a.m.
Wai Lana Yoga – Monday-Friday, 5:30 a.m.
Wallis Simpson: Secret Letters – Sunday, 28th, 9:00 p.m.
Washington Week – Fridays, 7:00 p.m. (except 5th)/12:00 midnight;
 Sundays, 12:30 p.m.
Watchers of the North – Wednesdays, 9:00 a.m. (ends 10th)
Welcome to My Studio – Fridays, 11:30 a.m.
Wheat Belly Total Health – Wednesday, 3rd, 9:00 p.m.
Woodsongs – Fridays, 12:00 noon
Woodturning Workshop – Wednesdays, 10:30 a.m.
Woodwright's Shop – Saturdays, 2:00 p.m. (except 20th)
You Should Know – Thursdays, 9:30 p.m. (except 4th)



DISH AND DIRECTV TO DROP KENW-TV AS OF JANUARY 1, 2015



We are very sad to announce that both Dish and DirecTV have notified us that beginning January 1st of 2015, they will no longer carry KENW-TV on their satellite services. So, if you have been watching KENW-TV on either Dish or DirecTV, after the first of the year, KENW-TV will no longer be there. This decision is made on the basis that the Federal Government allows a commercial company named Nielsen to determine Designated Market Areas (DMAs). As a New Mexico station, some years ago we petitioned the Nielson Company to move KENW-TV from the Amarillo DMA to the Albuquerque/Santa Fe DMA, and our petition was approved. Nielsen has now moved us back to the Amarillo DMA because our main digital transmitter is located in Portales, and Roosevelt County is in the Amarillo DMA.

This is a difficult issue for us to explain. For the last few years, KENW-TV has been available to DirecTV and Dish viewers in basically all counties of New Mexico except Dona Ana, Union, Quay, Curry, and Roosevelt. Dona Ana is in the El Paso DMA and the latter four New Mexico counties are in the Amarillo DMA according to Nielsen. KENW-TV has been serving viewers on the eastern side of New Mexico and in parts of West Texas since 1974, directly over-the-air and on the various cable companies serving this large geographic area.

We are doing everything we can to convince Dish and DirecTV they should not drop our signal. However, each company claims that it is against federal regulations for them to continue to carry our station because Nielsen has moved us back to the Amarillo DMA. We continue to point out to Nielsen that 6 of our 8 digital transmitters/translators are located in the Albuquerque/Santa Fe DMA. Only Portales and Tucumcari are located in the Amarillo DMA. We further argue that we are a New Mexico station, partially funded by the legislature of the State of New Mexico, and therefore should rightfully be in the Albuquerque/Santa Fe DMA.

We do not know which of our viewers living in Eastern New Mexico are using the small dish providers, so we are using this means to alert our viewers about the changes we expect to take place in the new year. If any of you would like to express your thoughts on this issue, here are the addresses of those involved:

Senior Program Manager
DISH Programming, Local Options,
9601 S. Meridian Blvd.
Englewood, CO 80112

Senior Manager, Content & Programming
DIRECTV
2260 E. Imperial Highway
El Segundo, CA 90245

Nielsen Business
Senior Account Executive-Local
Media 6255 W. Sunset Blvd.
Los Angeles, CA 90028

TV Broadcast Information Specialist, FCC,
Federal Communications Commission,
445 12th Street, SW
Washington, DC 20554 [tvinfo@fcc.gov]

ADDRESS SERVICE REQUESTED

NON PROFIT ORG
U.S. POSTAGE PAID
PORTALES NM 88130
PERMIT 15

