

# Q2•3

Program Guide KENW-TV/FM  
Eastern New Mexico University  
April 2018



**The Lady of Brassempouy'**  
**(c. 23,000 BCE)**

# CIVILIZATIONS

# When to watch from *A* to *Z*

## Channel 3-2 – April 2018

**Amanpour on PBS** – Tuesdays–Thursdays, 11:00 p.m.  
**American Woodshop** – Saturdays, 6:30 a.m.;  
Thursdays, 11:00 a.m. (ends 19th)  
**America's Heartland** – Saturdays, 6:30 p.m.  
**America's Test Kitchen** – Saturdays, 7:30 a.m.  
**Antiques Roadshow** – Mondays, 7:00 p.m./8:00 p.m. ;  
Mondays, 11:00 p.m.; Sundays, 7:00 a.m.  
**Ask This Old House** – Saturdays, 4:00 p.m.  
**Austin City Limits** – Saturdays, 9:00 p.m. /12:00 midnight  
**BBC World News** – Weekdays, 6:30 a.m./4:30 p.m.  
**Beads, Baubles and Jewels** – Mondays, 12:30 p.m.  
**Beauty of Oil Painting** – Fridays, 12:30 p.m.; Saturdays, 12:00 noon  
**Beyond 100 Days** – Tuesdays–Thursdays, 11:30 p.m.  
**Body Electric** – Weekdays, 5:30 a.m.  
**Burt Wolf: Travels & Traditions** –  
Mondays, 10:30 p.m. (except 9th, 23rd)  
**Classic Arts Showcase** – Sundays–Saturdays, 1:00 a.m.–5:00 a.m.  
**Classic Gospel** – Sundays, 8:00 a.m./4:00 p.m.  
**Classical Stretch** – Weekdays, 6:00 a.m.  
**Closer to Truth** – Sundays, 2:00 p.m.  
**Cook's Country** – Saturdays, 8:00 a.m.  
**Consuelo Mack WealthTrack** – Fridays, 7:30 p.m.  
**Creative Living** – Tuesdays/Thursdays 12:00 noon;  
Saturdays, 2:00 p.m.; Tuesdays, 9:30 p.m. (except 3rd)  
**Cultura** – Sundays, 12:00 noon (8th, 22nd only)  
**Fall & Rise of Reginald Perrin** – Saturdays, 8:00 p.m.  
**Fishing Behind the Lines** – Wednesdays, 11:00 a.m.  
**Fit 2 Stitch** – Tuesdays, 12:30 p.m.  
**Fons & Porter's Love of Quilting** – Saturdays, 1:30 p.m.;  
Wednesdays, 12:30 p.m. (ends 18th)  
**Front and Center** – Thursdays, 10:00 p.m. (begins 12th)  
**Frontline** – Tuesdays, 10:00 p.m.; Thursdays, 7:00 p.m.  
“Trump's Takeover” – 10th, 12th  
“McCain” – 17th, 19th  
“Trafficked in America” – 24th, 26th  
**Globe Trekker** – Sundays, 11:00 a.m.  
**Great British Baking Show** – Saturdays, 8:30 a.m.  
**Healthy Minds** – Sundays, 3:30 p.m. (ends 15th)  
**In Focus New Mexico** – Sundays, 12:30 p.m.  
**It's Sew Easy** – Saturdays, 5:30 p.m.  
**Jazzy Vegetarian** – Saturdays, 2:30 p.m.  
**Joanne Weir's Plates and Places** – Tuesdays, 11:00 a.m.  
**Joy of Music** – Sundays, 9:00 a.m.  
**Joy of Painting** – Saturdays, 11:30 a.m.  
**Knit and Crochet Now!** – Tuesdays, 11:30 a.m.;  
Saturdays, 3:00 p.m.  
**Lawrence Welk** – Saturdays, 7:00 p.m.  
**Market to Market** – Fridays, 7:00 p.m.  
**Martha Bakes** – Mondays, 11:30 a.m.  
**Masterpiece** – Sundays, 8:00 p.m.; Fridays, 10:00 p.m.  
“Child in Time” – 1st, 6th  
“Unforgotten” (6 Pts.) – begins 8th, 13th  
**#MeToo, Now What?** – Fridays, 8:30 p.m. (ends 6th)  
**Motorweek** – Saturdays, 9:30 a.m.  
**Music & the Spoken Word** – Sundays, 9:30 a.m.  
**Music City Roots** – Thursdays, 10:00 p.m. (ends 5th)  
**Nature** – Wednesdays, 7:00 p.m.; Saturdays, 11:00 p.m.  
“Sex, Lies and Butterflies” – 4th, 7th  
“Moose: Life of a Twig Eater” – 11th, 14th  
“Natural Born Rebels: Hunger Wars” – 25th, 28th  
**News 3 New Mexico** – Wednesdays–Fridays, 5:00 p.m.  
**Nightly Business Report** – Weekdays, 5:30 p.m.  
**Nova** – Wednesdays, 8:00 p.m.; Saturdays, 10:00 p.m. ;  
Sundays, 12:00 midnight  
“Holocaust Escape Tunnel” – 11th, 14th, 15th  
“Living with the Weather Machine” (2 hrs.) –  
18th (begins 7:00 p.m.), 21st, 22nd  
“Nova Wonders (6 Pts.) – begins 25th, 28th, 29th  
“Bird Brain” – 25th, 8:00 p.m.  
**P. Allen Smith's Garden Home** – Saturdays, 10:00 a.m.  
**Paint This with Jerry Yarnell** – Saturdays, 11:00 a.m.  
**Pati's Mexican Table VI** – Mondays, 11:00 a.m.  
**PBS NewsHour** – Weekdays, 6:00 p.m./12:00 midnight  
**PBS NewsHour Weekend** – Sundays, 5:00 p.m.

## A to Z listings for 3-1 are on pages 18 & 19

**Project Smoke** – Saturdays, 7:00 a.m.; Thursdays, 11:30 a.m.  
**Quilt in a Day** – Saturdays, 12:30 p.m.  
**Quilting Arts** – Saturdays, 1:00 p.m.;  
Wednesdays, 12:30 p.m. (begins 25th)  
**Red Green Show** – Thursdays, 9:30 p.m.; Saturdays, 8:30 p.m.  
**Report from Santa Fe** – Saturdays, 6:00 p.m.  
**Rough Cut** – Thursdays, 11:00 a.m.; Saturdays, 6:00 a.m. (begins 14th)  
**Samantha Brown's Places to Love** – Sundays, 6:00 a.m.  
**Scully/The World Show** – Tuesdays, 5:00 p.m.  
**Second Opinion** – Wednesdays, 10:00 p.m.;  
Sundays, 6:30 a.m./3:00 p.m. (except 29th)  
**Sewing with Nancy** – Saturdays, 5:00 p.m.  
**Sit and Be Fit** – Mondays, Wednesdays, Fridays, 12:00 noon  
**Song of the Mountains** – Thursdays, 8:00 p.m.  
**Sportslook** – Thursdays, 9:00 p.m.  
**Star Gazers** – Wednesdays, 10:57 p.m.; Saturdays, 10:57 a.m./9:57 p.m.;  
Sundays 2:57 p.m./10:57 p.m.; Mondays 10:57 p.m.  
**Taste of History** – Saturdays, 10:30 a.m.  
**This Old House** – Saturdays, 3:30 p.m.; Wednesdays, 10:30 p.m.  
**Travel Detective IV** – Sundays, 1:30 p.m.  
**Travelscope** – Fridays, 11:30 p.m. (begins 13th)  
**Wai Lana Yoga** – Weekdays, 5:00 a.m.  
**Washington Week** – Fridays, 8:00 p.m.; Sundays, 5:30 p.m.;  
Mondays, 5:00 p.m.  
**Welcome to My Studio** – Thursdays, 12:30 p.m.; Saturdays, 4:30 p.m.  
**Well Read** – Sundays, 2:30 p.m.  
**Woodsmith Shop** – Saturdays, 6:00 a.m. (ends 7th);  
Wednesdays, 11:30 a.m.  
**You Should Know** – Tuesdays, 9:00 p.m. (except 3rd)

## Special Programs

**American Experience** –  
“Roads to Memphis” – Tuesday, 3rd, 7:00 p.m.  
“Perfect Crime” – Tuesday, 10th, 8:00 p.m.; Sunday, 15th, 10:30 p.m.  
“The Massie Affair” – Tuesday, 17th, 8:00 p.m.; Sunday, 22nd, 10:30 p.m.  
**American Health Journal** – Sunday, 29th, 3:30 p.m.  
**Art in the Twenty-First Century** (4 Pts.) – Tuesdays, 10:00 p.m. (ends 3rd)  
**Black America Since MLK** ( 2 Pts., 4 hrs.) –  
Tuesday and Wednesday, 3rd and 4th, 8:00 p.m.  
**Call the Midwife VII** – Sundays, 7:00 p.m.  
**Civilizations** (9 Pts.) – Tuesdays, 7:00 p.m. (begins 17th);  
Sundays, 10:00 a.m. /9:30 p.m. (begins 22nd)  
**Dream of Italy** (6 Pts.) – Sundays, 11:30 p.m. (begins 8th)  
**First Civilizations** (4 Pts.) – Tuesdays, 8:00 p.m. (begins 24th);  
Sundays, 10:30 p.m. (begins 29th)  
**Four Sons and All Their Sons – A Passover Tale** –  
Sunday, 8th, 10:00 a.m./6:00 p.m.  
**GI Jews–Jewish Americans in WW II** – Wednesday, 11th, 9:00 p.m.  
**Himalaya Connection** – Saturday, 7th, 10:00 p.m.  
**Independent Lens** – Mondays, 9:00 p.m.  
“When God Sleeps” – 2nd  
“The Art of the Shine” – 9th  
“What Lies Upstream” – 16th  
“Look & See: Wendell Berry's Kentucky” – 23rd  
“True Conviction” – 30th  
**In Principle** – Fridays, 8:30 p.m. (begins 13th)  
**In Their Own Words “Queen Elizabeth II”** – Sunday, 1st, 11:00 p.m.  
**Jesus: Countdown to Calvary** –  
Sunday, 1st, 10:00 a.m./6:00 p.m./10:00 p.m.  
**Little Women: A Timeless Story** – Sunday, 1st, 9:30 p.m.;  
Friday, 6th, 11:30 p.m.  
**Live From Lincoln Center** (4 Pts.) –  
Fridays, 9:00 p.m. (begins 20th); Sundays, 6:00 p.m. (begins 22nd)  
**Music Row: Nashville's Most Famous Neighborhood** –  
Thursday, 5th, 7:00 p.m.; Monday, 9th, 10:00 p.m.  
**POV “Bill Nye: Science Guy”** – Wednesday, 18th, 9:00 p.m.  
**Power to Heal: Medicare and the Civil Rights Revolution** –  
Sunday, 29th, 3:00 p.m.  
**Secrets of the Dead “Hannibal in the Alps”** – Tuesday, 10th, 7:00 p.m.;  
Sunday, 15th, 10:00 a.m.; Monday, 23rd, 10:00 p.m.  
**Spying on the Royals** (2 Pts.) – Fridays, 9:00 p.m. (begins 6th);  
Sundays, 9:30 p.m. (begins 8th)  
**Stealing Your Life with Frank Abagnale** – Sunday, 15th, 6:00 p.m.  
**World of Ice Dance International** – Sunday, 8th, 10:30 p.m.

# Q2·3 Program Guide

THE MAGAZINE FOR THE FRIENDS OF PUBLIC BROADCASTING – APRIL 2018

**Q2-3 Program Guide** is published each month by the Broadcast Center, a non-profit public service division of Eastern New Mexico University.

**Q2-3 Program Guide** (Cue to 3) is available to friends contributing \$35 per year or more to the support of public broadcasting. Senior Citizen and Student memberships are available for \$25. All contributions are tax deductible. Donations should be made payable to “**Friends of KENW-TV**” or to “**Friends of KENW-FM**.”

**KENW-TV**, Channel 3, can be seen on UHF TV analog translators in the following areas:  
Tucumcari - Channel 32; Ft. Sumner - Channel 34.

**KENW-TV digital transmitters** are located in: Artesia; Carlsbad; Ft. Sumner; Hobbs; Portales/Clovis; Roswell; Tucumcari; Ruidoso; Mescalero

**KENW-FM**, 89.5 MHz, Portales; **KMTH-FM**, 98.7 MHz, Maljamar; **KENM-FM**, 88.9 MHz, Tucumcari; NM; **KENU-FM**, 88.5 MHz, Des Moines, NM; **KENG-FM**, 88.5 MHz; Ruidoso, NM; **KENE-FM**, 88.1 MHz, Raton, and FM translators in:  
Apache Springs - 90.9 MHz Las Vegas - 88.1 MHz  
Clayton - 93.5 MHz Roswell - 91.1 MHz  
Des Moines - 106.1 MHz Wagon Mound - 92.1 MHz  
Ft. Sumner - 91.7 MHz

**Telephone:** From Cannon A.F.B., Clovis, Portales, and Roosevelt County, call (575) 562-2112. Others, call toll-free 1-888-FOR-KENW (367-5369).  
**Fax:** (575) 562-2590

**Mailing Address:**

KENW-TV/FM  
52 Broadcast Center, ENMU  
1500 South Avenue K  
Portales, NM 88130

**Web site:** www.kenw.org

**E-Mail:** kenwtv@enmu.edu  
kenwfm@enmu.edu

**We always welcome your comments and/or suggestions:  
Toll-free 1-888-FOR-KENW (367-5369)**

- Civilizations** is a visually stunning nine-part series that tells the story of art from the dawn of history to the present day from a global perspective.  
**Jesus: Countdown to Calvary** deconstructs the week leading up to Jesus's death. In live cabaret-style performances, five of musical theater's biggest stars celebrate the musical traditions of Broadway in **Live From Lincoln Center at the Appel Room**.
- Masterpiece** presents “**The Child in Time**,” a riveting 90-minute drama starring Benedict Cumberbatch, followed by “**Unforgotten**,” a gripping six-part UK mystery. “**Hannibal in the Alps**” on **Secrets of the Dead** explores which of four routes Hannibal and his vast army took over the treacherous mountains to attack Rome from the north, a feat Romans believed to be impossible.  
**Music Row: Nashville's Most Famous Neighborhood** describes how a group of ordinary bungalows led to Nashville's title as Music City, USA.
- The two-part **Spying on the Royals** looks at what may be the most contentious instance of surveillance in British history.  
**First Civilizations** is a four-part series that looks at the history of the first six human civilizations, from which all other civilizations have been derived.  
**Independent Lens** premieres “**What Lies Upstream**,” an exposé that reveals that the entire system that Americans assume is protecting their drinking water is fundamentally broken, and “**True Conviction**,” in which three innocent and newly exonerated Texans form a detective agency to help free other innocent people still behind bars.  
**Frontline** looks at Trump's high-stakes battle for control of the Republican party in “**Trump's Takeover**”; Senator John McCain's life and politics in “**McCain**”; and Guatemalan teens forced to work against their will in “**Trafficked in America**.”
- POV** presents “**Bill Nye: The Science Guy**,” a portrait of the man who now runs The Planetary Society's mission to launch a solar propelled spacecraft.  
**Nova Wonders** is a new six-part series that tackles some of the most provocative unanswered questions about the cosmos and life.  
**Power to Heal: Medicare and the Civil Rights Revolution** chronicles the struggle to secure equal and adequate healthcare for all Americans.  
**GI Jews: Jewish Americans in World War II** spotlights the little-known story of the 550,000 Jewish Americans who served their country in all branches of the military. As the Donald Trump administration considers eliminating funding for public media, PBS launches **In Principle**, a conservative talk show series.

**Q2·3 Program Guide Staff**

Editor: **Linda Stefanovic**  
Program Log Descriptions: **Mike Rusher**

Eastern New Mexico University is an affirmative action and equal opportunity employer. The University does not discriminate on the basis of race, color, national origin, sex, or handicap in its programs, activities, or employment. Persons seeking additional information about the University's nondiscrimination policy should contact the Executive Director of Planning & Analysis, ENMU, Station #2, Portales, NM 88130.

**ENMU BOARD OF REGENTS**

*President*  
**Mr. Dan Patterson**  
*Vice President*  
**Mr. Terry Othick**  
*Secretary / Treasurer*  
**Mr. KeKoa Von Schritlz**  
*Member*  
**Ms. Jane Christensen**  
*Member*  
**Mr. Ed Tatum**  
**EASTERN NEW MEXICO UNIV.**  
*President*  
**Dr. Jeff Elwell**  
*Vice President for Academic Affairs*  
**Dr. Jamie Laurenz**  
*Vice President for Academic Support*  
**Mr. Clark Elswick**  
*Vice President for Business Affairs*  
**Mr. Scott Smart**  
*Vice President for Student Affairs*  
**Dr. Jeffrey Long**

**BROADCAST CENTER STAFF**

*Director of Broadcasting*  
**Duane W. Ryan**  
*Business Manager*  
**Terri Doerr**  
*Accountant*  
**Carla Benavidez**  
*Director of Engineering*  
**Jeff Burmeister**  
*Engineers*  
**Rick Counts**  
**Porfirio Delgado**  
**Martin Quintero**  
*Business Affairs Consultant*  
**Jim Zupancic**

**AREA ADMINISTRATOR**  
*Executive Director,*  
*Planning & Analysis*  
**Dr. Patrice Caldwell**

**KENW-TV STAFF**

*Development Officer*  
**Sheryl Borden**  
*Development/Promotion*  
*Director*  
**Rena Garrett**  
*Producer/Directors, TV*  
**Allan Crawford**  
**James Wygal**  
*Production/Community*  
*Services Consultant*  
**Don Criss**  
*Programming Consultant*  
**Linda Stefanovic**

*Operations Director/*  
*Assistant Program Director*  
**Sean Moore**  
*Assistant Operations Director*  
**Justin Robertson**  
*Master Control Operators, TV*  
**David Asplund**  
**Kim Choate**  
*Administrative Assistants*  
**Vickie Brisco**  
**Mike Rusher**

**KENW/KMTH-FM STAFF**

*News Director, FM*  
**Janet Lyn Bresenham**  
*Development Director, FM*  
**Amie Griffith**  
*Operations Director, FM*  
**Shannon Hearn**  
*Audio Engineer*  
**Mickey Morgan**  
*Administrative Assistant*  
**Suzanne West**

**BROADCAST CENTER  
STUDENT STAFF EMPLOYEES**

Brooklyn Biel	Olivia Land	Johanna Poirier
Lane Castro	Mariah Martinez	Michael Poynor
Phoebe Green	Aubrey McCall	Spencer Purcell
Sydney Henderson	Rochelle McClenton	Kasha Sanderson
Jordan Honeycutt	Kaitlin McKay	Gevyn Stockard
Marie Jones	Izaiaz Mendoza	Karissa Waldrop
Dylan Knox	Bill Moyer	Kyanna Walton
		Kenan White





Queen Idia (16th Century)

# CIVILIZATIONS

**Civilizations** is a sweeping, visually stunning nine-part series that tells the story of art from the dawn of human history to the present day—for the first time on a global scale. Inspired by **Civilization**, Kenneth Clark’s landmark 1969 acclaimed series about Western art, this bold new series reveals the role art and the creative imagination have played in the forging of humanity itself, and introduces a new generation to works of beauty, ingenuity, and illumination created across cultures and continents.

**Civilizations** is filmed on six continents: Africa, Asia, Australasia (Australia, New Zealand, and neighboring islands in the South Pacific Ocean), Europe, and North and South America. State-of-the-art drone and camera technology allow viewers to immerse themselves in the extraordinary locations and see the world’s treasures in new ways, bringing remote objects up close in order to celebrate detail, craftsmanship, and artistry as never before.

From the landscape scrolls of classical China and the sculpture of the Olmecs to African bronzes, Japanese prints, and French Impressionist paintings; from the stained glass windows of Chartres cathedral to Matisse’s cardboard cut-outs; from the great dome of the Suleymaniye mosque to the paintings of the Dutch Golden Age; and from Hokusai’s *Wave* to Monet’s Rouen cathedral series,



Hand Stencil found in cave, Spain (c. 37,000 BCE)



Dome inside St. Peter’s Basilica, Rome (1506-1626)

**Civilizations** goes inside some of the world’s greatest museums, historic locations, cathedrals, and mosques to provide viewers access to priceless works of art and architecture.

Some of the most spectacular works of art the world has ever seen have been inspired by spiritual devotion, raising challenging questions about the relationship between humans, the divine, and the act of creating.

Underlying the series is an exploration of the premise that it is through the creative imagination that humanity expresses its most essential self and looks for the fundamental meaning of life.

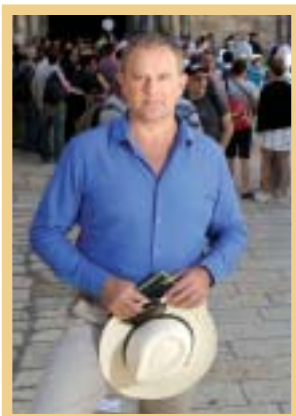
**Civilizations** can be seen on 3-2 Tuesdays at 7:00 p.m. beginning the 17th, and Sundays at 10:00 a.m. and 9:30 p.m. beginning the 22nd. On 3-1, the series airs Wednesdays at 7:00 p.m. beginning the 18th and Thursdays at 7:00 a.m. beginning the 19th.



Turquoise mosaic of double headed serpent, Aztec (c. 1400-1521)

## Jesus: Countdown to Calvary Traces His Last Days

Regardless of one’s religious beliefs, there is no denying the impact Jesus of Nazareth has had on world history, particularly the events surrounding his death. In **Jesus: Countdown to Calvary**, Hugh Bonneville, well-known actor (*Downton Abbey*) and a Cambridge theology graduate, travels to Jerusalem in search of answers.



Hugh Bonneville is at Jerusalem’s Church of the Holy Sepulchre.

Meeting with academic experts and spiritual leaders, Bonneville deconstructs the week leading up to Jesus’s death and untangles the complex factors that, in just six days, turned a popular preacher into a reviled victim of the Romans’ most brutal form of execution—crucifixion.

Exploring questions that have provided more than 2000 years of debate, the riveting new documentary offers fascinating insight from both religious and historical angles. Hugh and his guides utilize ancient artifacts, Gospel texts, historical analysis, and modern insight to provide a fresh perspective on the social, religious, and political tensions at play in first century Jerusalem.

The legacies of leading figures like Pontius Pilate, Caiaphas, and Judas Iscariot are brought into focus. Long-held assumptions, some of which formed the root of centuries of anti-Semitism, are challenged head on.

**Jesus: Countdown to Calvary** will be broadcast on 3-2 Sunday, the 1st at 10:00 a.m., 6:00 p.m., and 10:00 p.m. On 3-1, it airs Sunday, the 1st at 12:00 noon and 9:00 p.m.

## LIVE FROM LINCOLN CENTER at the Appel Room

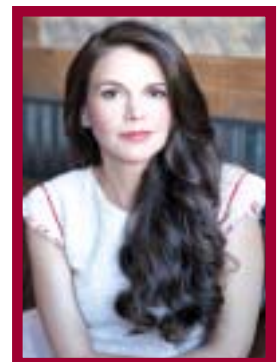
Over four nights in December, five of musical theater’s biggest stars celebrated the rich musical traditions of Broadway and beyond. Now, **Live From Lincoln Center** brings these hour-long, cabaret-style performances to you.

The four-part series shines the spotlight on the voices and talents of Sutton Foster, Jonathan Groff, Leslie Odom Jr., Andrew Rannells, and Stephanie J. Block. Each performance is crafted around signature songs and music that has shaped each artist’s journey, all performed with a world-class band.

The series begins with “Sutton Foster in Concert,” the two-time Tony winner, who with her irresistible blend of show-stopping talent and effusive charm, is Broadway royalty.

The sold-out concert is set in the beautiful Appel Room, one of New York City’s most dramatic and breathtaking backdrops: a 50’ by 83’ wall of glass overlooking Central Park, Columbus Circle, and the Manhattan skyline.

**Live From Lincoln Center** will be broadcast on 3-2 Fridays at 9:00 p.m. beginning the 20th and Sundays at 6:00 p.m. beginning the 22nd. On 3-1, the series airs Saturdays at 7:00 p.m. beginning the 21st.



Sutton Foster

## The Child in Time

*Time stops when the heart breaks.*

An everyday moment triggers a crisis in the lives of a happy, successful British couple in Ian McEwan's haunting tale of a lost child and redeemed love, in "The Child in Time," starring Benedict Cumberbatch and Kelly Macdonald, and airing on **Masterpiece**.

In the 90-minute drama, Cumberbatch stars as Stephen Lewis, a noted children's book author, and Macdonald plays his wife, Julie, a professional musician. They are the doting parents of Kate (Beatrice White), an impish four-year-old, their only child. Then one day Kate mysteriously disappears during a shopping outing with Stephen. It's every parent's worst nightmare, and it upends Stephen and Julie's lives in extraordinary ways.



Benedict Cumberbatch stars as Stephen Lewis and Beatrice White as Kate Lewis.

Missing for three years, Kate haunts every aspect of Stephen's life—as a phantom at his side, a voice in his ear, a fleeting glimpse in a crowd of school children.

Estranged from Julie due to the stress of their mutual loss, Stephen makes an attempt to reconnect, going to the village where she now lives. There he is overcome with a powerful feeling of déjà vu at a local pub. He is certain he has been there before, but he can't think when.

With the gentlest touch of the fantastical, this riveting story takes viewers in and out of the present, past, and future, exploring the twin themes of the title—childhood and time—and leading to a conclusion that is as surprising as it is gratifying.

"The Child in Time" on **Masterpiece** will be broadcast on 3-2 Sunday, the 1st at 8:00 p.m. and repeats Friday, the 6th at 10:00 p.m. On 3-1, it airs Sunday, the 1st at 7:00 p.m. and repeats Monday, the 2nd at 1:00 p.m.

## Unforgotten

*Cold cases make the hottest drama!*

Two stone-cold cases of murder test the wits of crime-solving duo DCI Cassie Stuart and DS Sunny Khan, played by Nicola Walker (Last Tango in Halifax) and Sanjeev Bhaskar (Indian Summers), in two back-to-back seasons (six episodes) of the gripping new UK mystery series "Unforgotten," airing on **Masterpiece**.

Season 1 of the critically-acclaimed series opens with a human skeleton found beneath a demolished house. The remains could be centuries old—or four decades, as comes to light upon further investigation of the crime scene.



Nicola Walker stars as DCI Cassie Stuart and Sanjeev Bhaskar as DS Sunny Khan.

Cassie and Sunny eventually discover the victim was a young man missing since 1976, and his nearly-disintegrated pocket diary implicates four seemingly unconnected couples. But identifying the body only inspires more questions, as individuals implicated deny ever knowing the victim.

"Unforgotten" on **Masterpiece** airs on 3-2 Sundays at 8:00 p.m. beginning the 8th and repeats Fridays at 10:00 p.m. On 3-1, it airs Sundays at 7:00 p.m. beginning the 8th and repeats Mondays at 1:00 p.m.

## Hannibal in the Alps



Hannibal, one of history's most famous generals, achieved what the Romans thought to be impossible. With a vast army, he crossed the mighty Alps in only 16 days to launch an attack on Rome from the north. For the following 15 long years, Hannibal waged a campaign of annihilation throughout Italy. Since that time, nobody has been able to prove which of the four possible routes over the Alps Hannibal actually took ... until now.

In **Secrets of the Dead** "Hannibal in the Alps," a team of explorers, archaeologists, and scientists combine state-of-the-art technology, ancient texts, and a recreation of the route itself to prove conclusively where Hannibal's army made it across the Alps—and exactly how and where they did it.

The famous crossing of the Alps occurred in 218 BC, a period when Carthage and Rome were competing for world dominance. Hannibal traversed the mountains with a force of more than 30,000 soldiers, 15,000 horses, and most famous of all—37 war elephants. It took nine days to reach the high top of the mountain. On the climb, donkeys carried 220 pounds of hay, enough food to feed one horse for 20 days. But the numerous horses as well as the appetites of the elephants meant that food supplies quickly ran out.

**Secrets of the Dead** "Hannibal in the Alps" can be seen on 3-2 Tuesday, the 10th at 7:00 p.m., Sunday, the 15th at 10:00 a.m., and Monday, the 23rd at 10:00 p.m. On 3-1, it airs Tuesday, the 10th at 8:00 p.m.



In Capua, Italy, this marble bust is reputed to be that of Hannibal.

## MUSIC ROW:

### Nashville's Most Famous Neighborhood

**Music Row: Nashville's Most Famous Neighborhood** tells the story of how a group of ordinary bungalows became the heart of the country music industry, and led to Nashville's title as Music City USA.

Narrated by singer-songwriter Pam Tillis, the film focuses on the rise of the Grand Ole Opry and the subsequent opening of recording studios in the downtown area. It also looks at the beginning of Music Row and how it developed into a complete neighborhood housing the full spectrum of the music industry—from session musicians and recording engineers, to record labels and entertainment lawyers.

**Music Row: Nashville's Most Famous Neighborhood** will be broadcast on 3-2 Thursday, the 5th at 7:00 p.m. and Monday, the 9th at 10:00 p.m. On 3-1, it airs Monday, the 2nd at 7:00 p.m. and Tuesday, the 3rd, at 7:00 a.m. and 2:00 p.m.





## Spying on the Royals

### Britain's Most Controversial Espionage Operations

**Spying on the Royals** is a compelling two-part documentary that shows a rarely explored side to the infamous romance between King Edward VIII and Wallis Simpson. Unbeknownst to the couple, intelligence agencies were tracking their phone calls and recording their conversations, and the revealed dialogues would become part of a great modern controversy.

Sharing the secret files of those who spied on Edward VIII, Wallis Simpson, and a king-to-be, as well as eyewitnesses still living today, **Spying on the Royals** looks at what may be the most contentious instance of surveillance in British history.

On the weekend of December 5th, 1936, a frazzled King Edward VIII sat alone at Buckingham Palace. In secret, he telephoned his brother Bertie to tell him of his major decision—that he could no longer be King if it meant abandoning the woman he loved,

Wallis Simpson. But little did the royal brothers know that others were covertly listening to their private phone calls.

Declassified documents bring to light the secret story behind the events that stunned the world eighty years ago. Both Edward and Wallis were considered major security threats and were suspected of having Nazi sympathies by both Britain and America. This top-secret surveillance operation involved hundreds of spies over eleven years, spanning two continents, eight countries, and the Atlantic Ocean. Edward and Wallis were bugged, wire-tapped, and followed—on the orders of both the British king and the American president.

**Spying on the Royals** airs on 3-2 Fridays at 9:00 p.m. beginning the 6th and Sundays at 9:30 p.m. beginning the 8th. On 3-1, it airs Mondays at 7:00 p.m. beginning the 9th and Tuesdays at 7:00 a.m. beginning the 10th.

## First Civilizations

### Looks at the Six

#### Earliest Human Civilizations

**First Civilizations**, a four-part series, is a follow-up to the 2015 PBS series **First Peoples**.

Human civilizations first emerged in the Near East, Egypt, the Indus Valley, China, the Andes, and Mesoamerica. All subsequent civilizations have been derived from these original six foundational civilizations. The series breaks down the history of these first civilizations by topics: warfare, agriculture, religion, and trade.

**First Civilizations** will be broadcast on 3-2 Tuesdays at 8:00 p.m. beginning the 24th and Sundays at 10:30 p.m. beginning the 29th. On 3-1, it can be seen Wednesdays at 8:00 p.m. beginning the 25th.

## FRONTLINE

### Trump's Takeover

**Frontline** goes inside President Trump's high-stakes battle for control of the Republican party. It looks at how Trump attacked fellow Republicans and used inflammatory rhetoric that rallied his base.

This film airs on 3-2 Tuesday, the 10th at 10:00 p.m. and Thursday, the 12th at 7:00 p.m. On 3-1, it airs Friday, the 13th at 9:00 p.m.

### McCain

"McCain" examines the Senator's complicated relationship with President Trump and his own Republican party. It looks at McCain's life and politics, from POW in Vietnam, to choosing Sarah Palin as running mate, to his dramatic vote against the GOP's health care bill.

"McCain" airs on 3-2 Tuesday, the 17th at 10:00 p.m. and Thursday, the 19th at 7:00 p.m. On 3-1, it airs Friday, the 20th at 10:00 p.m.

### Trafficked in America

This is the inside story of how Guatemalan teens were forced to work against their will in Ohio. It exposes a criminal network that exploited undocumented minors, companies profiting from forced labor, and the US government's role.

"Trafficked in America" airs on 3-2 Tuesday, the 24th at 10:00 p.m., and Thursday, the 26th at 7:00 p.m. On 3-1, it airs Friday, the 27th at 10:00 p.m.



## What Lies Upstream

In January 2014, West Virginians noticed that their tap water had a peculiar smell. It was soon discovered that a mysterious chemical, MCHM, had leaked into the Elk River from a damaged tank at a nearby chemical plant, poisoning the drinking water supply for nearly half of the state's citizens—over 300,000 Americans.

In "What Lies Upstream" on **Independent Lens**, an unsettling exposé, investigative filmmaker Cullen Hoback uncovers a shocking failure of regulation from both state and federal agencies and a damaged political system where chemical companies often write the laws that govern them. While he's deep into his research in West Virginia, a similar water crisis strikes Flint, Michigan, revealing that the entire system that Americans assume is protecting their drinking water is fundamentally broken.

"What Lies Upstream" on **Independent Lens** will be broadcast on 3-2 Monday, the 16th at 9:00 p.m. On 3-1, it can be seen Sunday, the 22nd at 9:00 p.m.

## True Conviction

There's a new detective agency in Dallas! After serving a combined 60 years in prison for crimes they did not commit, three recently exonerated Texans—Christopher Scott, Johnnie Lindsey, and Steven Phillips—join forces to form the unlikeliest of investigative teams. Their mission: to free other innocent people still behind bars. After all, who better than three innocent and freshly exonerated men to sniff out false evidence or corrupt cops and DAs?

"True Conviction" on **Independent Lens**, a hardboiled yet rousing documentary, follows these change-makers as they rebuild their lives and families, learn to investigate cases, work to support each other, and campaign to fix the criminal justice system.

The investigators focus their attention on the cases of Max Soffar, a death row inmate of 35 years who was forced into a triple murder confession as a young man, and Isaiah Hill, sentenced to life in prison on aggravated assault charges after refusing a plea bargain.

"True Conviction" on **Independent Lens** airs on 3-2 Monday, the 30th at 9:00 p.m. The episode can be seen on 3-1 in May.

## Bill Nye: The Science Guy

“Bill Nye: The Science Guy” begins the 31st season of **POV** (Point of View). The former star of the popular PBS KIDS show now runs The Planetary Society, founded by Nye’s mentor, Carl Sagan, where he’s launching a solar propelled spacecraft into the cosmos and advocating for the importance of science, research, and discovery in public life.

Nye is on a mission to stop the spread of anti-scientific thought and action. This portrait of Nye follows him as he takes on those who deny climate change, evolution, and a science-based world view. He goes head-to-head with prominent creationist Ken Ham, whose Creation Museum features displays that suggest that humans lived alongside dinosaurs and that the earth is 6,000 years old. Nye also takes on climate change skeptic, meteorologist, and occasional Fox News commentator Joe Bastardi.

Nye is joined by Neil deGrasse Tyson, Ann Druyan (who wrote the 1980 PBS series **Cosmos**, hosted by Carl Sagan, whom she married in 1981), and many other notable voices in the field.

**POV** “Bill Nye: The Science Guy” can be seen on 3-2 Wednesday, the 18th at 9:00 p.m. On 3-1, it will be broadcast Wednesday, the 18th at 10:00 p.m.

## NOVA Wonders

**Nova Wonders** is a new six-part series that follows remarkable researchers who are tackling the biggest, most provocative unanswered questions about life and the cosmos.

Each week, **Nova Wonders** poses a single big scientific question and takes viewers along on a journey to explore how far we’ve come in our quest for answers. The intriguing topics pondered in this first season are “What Are Animals Saying?”; “What’s Living In You?”; “Can We Build A Brain?”; “Are We Alone?”; “Can We Make Life?”; and “What’s The Universe Made Of?”

The series travels to some unexpected places to look for answers—including deep underwater, where humpback whales are essentially playing a game of “telephone” across the world, with pods teaching each other new songs; deep beneath our skin, where *trillions* of microbes are living in our bodies; deep below the earth, in mines where researchers are trying to detect elusive dark matter particles; deep into space, where astrophysicists are hunting for signs of extra-terrestrial life, and more.

**Nova Wonders** airs on 3-2 Wednesdays at 8:00 p.m. beginning the 25th and Saturdays at 10:00 p.m. beginning the 28th. On 3-1, it airs Thursdays at 2:00 p.m. beginning the 26th and Fridays at 9:00 p.m. beginning the 27th.



## Power to Heal: Medicare and the Civil Rights Revolution

This is the story of how a new national program, Medicare, was used to mount a dramatic, coordinated effort that racially desegregated thousands of hospitals across the country, all in a matter of months in 1966. Using the carrot of Medicare dollars, the federal government virtually ended the practice of segregating patients, doctors, medical staffs, blood supplies, and linens.

As one of the least known chapters of the civil rights movement, **Power to Heal: Medicare and the Civil Rights Revolution** chronicles the historic struggle to secure equal and adequate access to healthcare for all Americans.

**Power to Heal: Medicare and the Civil Rights Revolution** will be broadcast on 3-2 Sunday, the 29th at 3:00 p.m. On 3-1 it can be seen Tuesday, the 24th at 9:00 p.m. and repeats Wednesday, the 25th at 8:00 a.m. on KENW-TV.

## GI Jews: Jewish Americans in World War II

**GI Jews: Jewish Americans in World War II** spotlights the little-known story of the more than 550,000 Jewish Americans who served their country in all branches of the military during World War II. The film brings the struggles of these brave men and women to life through first-hand experiences that reveal their fight against fascism, as well as their more personal war to liberate loved ones in Europe. After years of battle, these pioneering servicemen and women emerged transformed: more profoundly American, more deeply Jewish, and determined to continue the fight for equality and tolerance at home. **GI Jews** premieres nationwide in honor of Holocaust Remembrance Day, April 12th.

**GI Jews** features more than 25 original interviews with veterans who speak candidly about the impact of their wartime experiences, including Mel Brooks, who served in the Army; Henry Kissinger, a refugee from

Nazi Germany who was drafted into the Army; Carl Reiner, the son of Jewish immigrants, who traveled throughout the Pacific theater with the Special Services Entertainment Unit; the late Bea

Cohen, who was a member of the Women’s Army Auxiliary Corps (WAAC) in England; and Max Fuchs, who served in the 1st infantry division and was the cantor at a Jewish service in Aachen, Germany, broadcast by NBC in 1944—the first Jewish religious service to be broadcast from Germany since the advent of Hitler.

**GI Jews: Jewish Americans in World War II** can be seen on 3-2 Wednesday, the 11th at 9:00 p.m. On 3-1, it airs Thursday, the 12th at 7:00 p.m.



Mel Brooks, then Melvin Kaminsky, 19, in France, c. 1944

## In Principle

### PBS Launches Conservative Talk Show Series

As the Donald Trump administration mulls whacking its funding for PBS (Trump’s 2019 budget eliminates public media funding), PBS is launching a conservative talk show. **In Principle**, an eight-week series, is hosted by Michael Gerson, a *Washington Post* columnist and former chief speechwriter for President George W. Bush, and Amy M. Holmes, formerly of Glenn Beck’s TheBlaze TV and a cable news contributor.

The hosts plan to interview two guests each show, hoping for an in-depth discussion on issues and their formative political experiences. Gerson said he’d like to discuss issues including race, gun control, and whether conservatism is the right message for the working class.

**In Principle** will be broadcast on 3-2 Fridays at 8:30 p.m. and on 3-1, Fridays at 7:30 p.m., both beginning the 13th.

# ◆ KENW-TV's DAYTIME SCHEDULES ◆

## Kids' Programming, How-to's, and Family Viewing

Channels 3-1 (HD), 3-2, 3-3, 3-4 (SD) require a digital television or a converter box, both with antennas in order to receive free over-the-air signals.

### Channel 3-2

#### Monday through Friday

5:00 am	Wai Lana Yoga
5:30 am	Body Electric
6:00 am	Classical Stretch
6:30 am	BBC World News
7:00 am	Sesame Street
7:30 am	Pinkalicious & Peterrific
8:00 am	Dinosaur Train
8:30 am	Peg + Cat
9:00 am	Daniel Tiger's Neighborhood
9:30 am	Daniel Tiger's Neighborhood
10:00 am	Splash and Bubbles
10:30 am	Curious George
11:00 am	Pati's Mexican Table (M)
	Joanne Weir's Plates and Places
	Fishing Behind the Lines (W)
	American Woodshop (Th)
	Bob the Builder (F)
11:30 am	Martha Bakes (M)
	Knit and Crochet Now! (Tu)
	Woodsmith Shop (W)
	Project Smoke (Th)
	Mister Rogers (F)
12:00 pm	Sit and Be Fit (MWF)
	Creative Living (TuTh)
12:30 pm	Beads, Baubles and Jewels (M)
	Fit 2 Stitch (Tu)
	Fons & Porter Love of Quilting (W)
	Welcome to My Studio (Th)
	Beauty of Oil Painting (F)
1:00 pm	Pinkalicious & Peterrific
1:30 pm	Ready, Jet, Go!
2:00 pm	Nature Cat
2:30 pm	Wild Kratts
3:00 pm	Arthur
3:30 pm	Odd Squad
4:00 pm	Odd Squad (M-Th)
	Biz Kid\$ (F)
4:30 pm	BBC World News America
5:00 pm	Washington Week (M)
	Scully/The World Show (Tu)
	News 3 New Mexico (W-F)
5:30 pm	Nightly Business Report
6:00 pm	PBS NewsHour

### Channel 3-3

#### Monday through Friday

5:00 am	Ready, Jet, Go!
5:30 am	Cat in the Hat
6:00 am	Nature Cat
6:30 am	Curious George
7:00 am	Pinkalicious & Peterrific
7:30 am	Daniel Tiger's Neighborhood
8:00 am	Daniel Tiger's Neighborhood
8:30 am	Splash and Bubbles
9:00 am	Sesame Street
9:30 am	Super Why!
10:00 am	Dinosaur Train
10:30 am	Peg + Cat
11:00 am	Sesame Street
11:30 am	Splash and Bubbles
12:00 pm	Curious George
12:30 pm	Pinkalicious & Peterrific
1:00 pm	Nature Cat
1:30 pm	Wild Kratts
2:00 pm	Wild Kratts
2:30 pm	Odd Squad
3:00 pm	Odd Squad
3:30 pm	Arthur
4:00 pm	Arthur
4:30 pm	Ready, Jet, Go!
5:00 pm	Sesame Street
5:30 pm	Pinkalicious & Peterrific
6:00 pm	Wild Kratts
6:30 pm	Wild Kratts
7:00 pm	Odd Squad
7:30 pm	Odd Squad
8:00 pm	Arthur
8:30 pm	Arthur



### Saturday

5:00 am	Bob the Builder
5:30 am	Daniel Tiger's Neighborhood
6:00 am	Pinkalicious & Peterrific
6:30 am	Splash and Bubbles
7:00 am	Curious George
7:30 am	Nature Cat
8:00 am	Ready, Jet, Go!
8:30 am	Wild Kratts
9:00 am	Odd Squad
9:30 am	Arthur
10:00 am	Cyberchase
10:30 am	Cat in the Hat
11:00 am	Mister Rogers
11:30 am	Twice as Good
12:00 pm	Hands on Crafts for Kids
12:30 pm	Super Why!
1:00 pm	Curious George
1:30 pm	Nature Cat
2:00 pm	Ready, Jet, Go!
2:30 pm	Wild Kratts
3:00 pm	Dinosaur Train
3:30 pm	Bob the Builder
4:00 pm	Daniel Tiger's Neighborhood
4:30 pm	Pinkalicious & Peterrific
5:00 pm	Biz Kid\$
5:30 pm	Sesame Street
6:00 pm	Nature Cat
6:30 pm	Ready, Jet, Go!
7:00 pm	Wild Kratts
7:30 pm	Odd Squad
8:00 pm	Arthur
8:30 pm	Cyberchase

### Sunday

5:00 am	Sesame Street
5:30 am	Daniel Tiger's Neighborhood
6:00 am	Pinkalicious & Peterrific
6:30 am	Splash and Bubbles
7:00 am	Curious George
7:30 am	Nature Cat
8:00 am	Ready, Jet, Go!
8:30 am	Wild Kratts
9:00 am	Odd Squad
9:30 am	Arthur
10:00 am	Cyberchase
10:30 am	Sesame Street
11:00 am	Mixed Nutz
11:30 am	Cat in the Hat
12:00 pm	Sid the Science Kid
12:30 pm	Super Why!
1:00 pm	Dinosaur Train
1:30 pm	Daniel Tiger's Neighborhood
2:00 pm	Pinkalicious & Peterrific
2:30 pm	Splash and Bubbles
3:00 pm	Curious George
3:30 pm	Nature Cat
4:00 pm	Ready, Jet, Go!
4:30 pm	Scigirls
5:00 pm	Curiosity Quest
5:30 pm	Sesame Street
6:00 pm	Daniel Tiger's Neighborhood
6:30 pm	Splash and Bubbles
7:00 pm	Wild Kratts
7:30 pm	Odd Squad
8:00 pm	Arthur
8:30 pm	Cyberchase

### Channel 3-1

#### Saturday

5:00 am	Mister Rogers
5:30 am	Dinosaur Train
6:00 am	Bob the Builder
6:30 am	Daniel Tiger's Neighborhood
7:00 am	Pinkalicious & Peterrific
7:30 am	Splash and Bubbles
8:00 am	Curious George
8:30 am	Nature Cat
9:00 am	Ready, Jet, Go!
9:30 am	Wild Kratts
10:00 am	Odd Squad
10:30 am	Arthur

#### Sunday

5:00 am	Sid the Science Kid
5:30 am	Dinosaur Train
6:00 am	Sesame Street
6:30 am	Daniel Tiger's Neighborhood
7:00 am	Pinkalicious & Peterrific
7:30 am	Splash and Bubbles
8:00 am	Curious George
8:30 am	Nature Cat
9:00 am	Ready, Jet, Go!
9:30 am	Scigirls
10:00 am	Odd Squad
10:30 am	Biz Kid\$



# KENW TV SCHEDULES 3-1 (HD), 3-2 (SD) AND 3-3 (SD)

Our regular KENW-TV Channel (3-2) is listed below in bold. It can be seen by those who use cable or one of our analog translators listed on page 3. Schedule 3-1 is our High Definition (HD) Channel, 3-3 is our Children's/Encore Standard Definition Channel (SD), and 3-4 is our FNX Channel (First Nation Experience). Those with either digital TV sets or analog sets with converter boxes (both require antennas) can receive all four channels in most parts of our viewing area. KENW-TV has digital transmitters in the following cities: Clovis/Portales; Hobbs/Lovington; Roswell; Artesia; Fort Sumner; Tucumcari; Carlsbad; Ruidoso; Mescalero.

**KENW-TV's 3-1 schedule (below in italics) is carried by DirecTV in most counties of New Mexico.**

**KENW-TV's 3-2 schedule (below in bold) is carried on Dish network in most counties of New Mexico.**

## *Sunday 1st*

6:00	3-2	<b>Samantha Brown's Places to Love</b> "Big Sur and Monterey, California"	7:30	3-1	<i>Art Basel: A Portrait</i>	11:30	3-3	<i>Little Women: A Timeless Story</i>
6:30	3-2	<b>Second Opinion</b> "Living with Alzheimer's"	8:00	3-1	<i>Rick Steves' Europe</i>	12:00	3-2	<b>PBS NewsHour</b>
7:00	3-2	<b>Antiques Roadshow</b> "St. Louis"	8:30	3-1	<i>My Greek Table</i>		3-1	<i>Independent Lens "When God Sleeps"</i>
8:00	3-2	<b>Classic Gospel</b> "Gospel Bluegrass Homecoming," Pt. 1	9:00	3-1	<i>Pati's Mexican Table</i>		3-3	<i>Call the Midwife</i>
9:00	3-2	<b>Joy of Music</b> "Bossi Concerto in A Minor"	9:30	3-1	<i>New Orleans Cooking</i>			
9:30	3-2	<b>Music and the Spoken Word</b>	10:00	3-1	<i>P. Allen Smith's Garden Home</i>			
10:00	3-2	<b>Jesus: Countdown to Calvary</b>	10:30	3-1	<i>Jazzy Vegetarian</i>			
11:00	3-2	<b>Globe Trekker</b>	11:00	3-1	<i>Classical Stretch</i>			
	3-1	<i>Washington Week</i>	11:30	3-1	<i>Sit and Be Fit</i>			
11:30	3-1	<i>To the Contrary</i>	12:00	3-1	<i>Great British Baking Show</i>			
12:00	3-2	<b>New Mexico True TV</b>	1:00	3-1	<i>Masterpiece "Child in Time"</i>			
	3-1	<i>Jesus: Countdown to Calvary</i>	2:30	3-1	<i>Little Women: A Timeless Story</i>			
12:30	3-2	<b>In Focus</b>	3:00	3-1	<i>Roadtrip Nation</i>			
1:00	3-1	<i>Scully/The World Show</i>	3:30	3-1	<i>This American Land</i>			
1:30	3-2	<b>Travel Detective</b> "Alternatives to Commercial Jets"	4:00	3-1	<i>America's Heartland</i>			
	3-1	<i>Market to Market</i>	4:30	3-1	<i>Daytripper</i>			
2:00	3-2	<b>Closer to Truth</b> "What Exists?"	5:00	3-1	<i>Amanpour on PBS</i>			
	3-1	<i>P. Allen Smith's Garden Home</i>	5:30	3-1	<i>Nightly Business Report</i>			
2:30	3-2	<b>Well Read</b> "Hari Kunzru/White Tears"	6:00	3-1	<i>PBS NewsHour</i>			
	3-1	<i>Weekends with Yankee</i>	7:00	3-2	<b>Antiques Roadshow</b> "Portland"			
3:00	3-2	<b>Second Opinion</b> "Cardiac Spouses"		3-1	<i>Music Row: Nashville's Most Famous Neighborhood</i>			
	3-1	<i>Great British Baking Show</i>	8:00	3-2	<b>Antiques Roadshow</b> "Little Rock"			
3:30	3-2	<b>Healthy Minds</b>		3-1	<i>Antiques Roadshow</i>			
		"Refractory Depression"	9:00	3-2	<b>Independent Lens</b>			
4:00	3-2	<b>Classic Gospel</b> "Best of Ivan Parker"		3-1	<i>"When God Sleeps"</i>			
	3-1	<i>Nova "The Great Math Mystery"</i>		3-1	<i>Dead Reckoning: War &amp; Justice</i>			
5:00	3-2	<b>PBS NewsHour Weekend</b>		3-3	<i>"In Our Time"</i>			
	3-1	<i>Well Read</i>		3-3	<i>Great British Baking Show</i>			
5:30	3-2	<b>Washington Week</b>	10:00	3-1	<i>Amanpour on PBS</i>			
	3-1	<i>Fall and Rise of Reginald Perrin</i>		3-3	<i>Masterpiece "Child in Time"</i>			
6:00	3-2	<b>Jesus: Countdown to Calvary</b>	10:30	3-2	<b>Burt Wolf: Travels &amp; Traditions</b>			
	3-1	<i>Call the Midwife</i>		3-1	<i>"Making a Restaurant," Pt. 1</i>			
7:00	3-2	<b>Call the Midwife</b> Pt. 3		3-1	<i>Beyond 100 Days</i>			
	3-1	<i>Masterpiece "Child in Time"</i>	11:00	3-2	<b>Antiques Roadshow</b> "Portland"			
8:00	3-2	<b>Masterpiece</b> "Child in Time"		3-1	<i>PBS NewsHour</i>			
8:30	3-1	<i>Little Women: A Timeless Story</i>						
9:00	3-1	<i>Jesus: Countdown to Calvary</i>						
	3-3	<i>Daytripper</i>						
9:30	3-2	<b>Little Women: A Timeless Story</b>						
	3-3	<i>America's Heartland</i>						
10:00	3-2	<b>Jesus: Countdown to Calvary</b>						
	3-1	<i>Arts in Context</i>						
	3-3	<i>This Old House</i>						
10:30	3-1	<i>Live at the Charleston Music Hall</i>						
	3-3	<i>Ask This Old House</i>						
11:00	3-2	<b>In Their Own Words</b>						
	3-1	<i>"Queen Elizabeth II"</i>						
	3-1	<i>Austin City Limits</i>						
	3-3	<i>Motorweek</i>						
11:30	3-3	<i>Woodwright's Shop</i>						
12:00	3-2	<b>Nova</b> "The Great Math Mystery"						
	3-1	<i>Masterpiece "Child in Time"</i>						
	3-3	<i>Nature</i>						

## *Tuesday 3rd*

5:00	3-1	<i>Classical Stretch</i>
5:30	3-1	<i>Wai Lana Yoga</i>
6:00	3-1	<i>Antiques Roadshow</i>
7:00	3-1	<i>Music Row: Nashville's Most Famous Neighborhood</i>
8:00	3-1	<i>Makers</i>
9:00	3-1	<i>Healthy Body Healthy Mind</i>
9:30	3-1	<i>Second Opinion</i>
10:00	3-1	<i>Closer to Truth</i>
10:30	3-1	<i>Healthy Minds</i>
11:00	3-1	<i>Classical Stretch</i>
11:30	3-1	<i>Wai Lana Yoga</i>
12:00	3-1	<i>Food Over 50</i>
12:30	3-1	<i>Taste of History</i>
1:00	3-1	<i>Call the Midwife</i>
2:00	3-1	<i>Music Row: Nashville's Most Famous Neighborhood</i>
3:00	3-1	<i>Antiques Roadshow</i>
4:00	3-1	<i>Consuelo Mack WealthTrack</i>
4:30	3-1	<i>Start Up</i>
5:00	3-1	<i>Amanpour on PBS</i>
5:30	3-1	<i>Nightly Business Report</i>
6:00	3-1	<i>PBS NewsHour</i>
7:00	3-2	<b>American Experience</b>
		"Roads to Memphis"
	3-1	<i>Black America Since MLK: And Still I Rise, Pt. 1</i>
8:00	3-2	<b>Black America Since MLK: And Still I Rise</b> "Out of the Shadows/Move On Up," Pt. 1

## KENW-TV on Cable Companies

We are pleased to announce that Plateau TV is now carrying all four channels of KENW-TV on its TV fiber optic service in many cities; for its service area, see [http://www.plateau.tv/service\\_area/](http://www.plateau.tv/service_area/). In the Portales area, Yucca Telecom also carries our four TV channels; the Yucca TV coverage area at <https://yuccatelecom.com/tv/>.

KENW-TV's 3-1 (High Definition, HD) and 3-2 (Standard Definition, SD) program schedules can be seen on the following cable companies:

Alpine, TX: Channel 12 (SD) and Channel 712 (HD), TDS  
 Dexter: Channel 3 (SD) and Channel 470 (HD), Cable One  
 Ft. Stanton, TX: Channel 6 (SD) and Channel 706 (HD), TDS  
 Hobbs: Channel 3 (SD) and Channel 703 (HD), TDS  
 Portales: Channel 3 (SD), and Channel 510 (HD), Comcast Cable  
 Roswell: Channel 3 (SD), and Channel 470 (HD), Cable One

KENW-TV's 3-2 Schedule (Standard Definition, SD) can be seen on the following cable companies:

Artesia: Channel 3, PVT  
 Carlsbad: Channel 3, TDS  
 Clovis: Channel 3, Suddenlink  
 Dexter: Channel 3, PVT  
 Eddy County South: Channel 3, TDS  
 Eunice: Channel 3, TDS  
 Farwell: Channel 3, Suddenlink  
 Ft. Sumner: Channel 3, Reach Broadband  
 Hagerman: Channel 3, PVT  
 Jal: Channel 3, TDS  
 Lea County: Channel 3, TDS  
 Loving: Channel 3, TDS  
 Lovington: Channel 3, TDS  
 Melrose: Channel 9, Reach Broadband  
 Muleshoe, TX: Channel 5, Reach Broadband  
 Texico: Channel 3, Suddenlink  
 Tucumcari: Channel 11, Comcast

## *Monday 2nd*

5:00	3-1	<i>Classical Stretch</i>
5:30	3-1	<i>Wai Lana Yoga</i>
6:00	3-1	<i>Nature "Leave it to Beavers"</i>
7:00	3-1	<i>In the Americas with David Yetman</i>

9:00 3-1 *American Experience*  
"Roads to Memphis"  
3-3 *Antiques Roadshow*  
10:00 3-2 **Art in the 21st Century** "Vancouver"  
3-1 *Amanpour on PBS*  
3-3 *History Detectives*  
10:30 3-1 *Beyond 100 Days*  
11:00 3-2 **Amanpour on PBS**  
3-1 *PBS NewsHour*  
3-3 *Globe Trekker*  
11:30 3-2 **Beyond 100 Days**  
12:00 3-2 **PBS NewsHour**  
3-1 *Black America Since MLK:  
And Still I Rise, Pt. 1*  
3-3 *America's Heartland*

### Wednesday 4th

5:00 3-1 *Classical Stretch*  
5:30 3-1 *Wai Lana Yoga*  
6:00 3-1 *Consuelo Mack WealthTrack*  
6:30 3-1 *Growing Bolder*  
7:00 3-1 *Samantha Brown's Places to Love*  
7:30 3-1 *Crossing South*  
8:00 3-1 *American Experience*  
"Roads to Memphis"  
9:00 3-1 *Craftsman's Legacy*  
9:30 3-1 *Rough Cut*  
10:00 3-1 *American Woodshop*  
10:30 3-1 *Woodwright's Shop*  
11:00 3-1 *Classical Stretch*  
11:30 3-1 *Sit and Be Fit*  
12:00 3-1 *Sara's Weeknight Meals*  
12:30 3-1 *Cook's Country*  
1:00 3-1 *Masterpiece "Downton Abbey," Pt. 2*  
2:30 3-1 *Rick Steves' Europe*  
3:00 3-1 *Music Voyager*  
3:30 3-1 *Travels with Darley*  
4:00 3-1 *Lidia's Kitchen*  
4:30 3-1 *America's Test Kitchen*  
5:00 3-1 *News 3 New Mexico*  
5:30 3-1 *Nightly Business Report*  
6:00 3-1 *PBS NewsHour*  
7:00 3-2 **Nature** "Sex, Lies, and Butterflies"  
3-1 *Black America Since MLK:  
And Still I Rise, Pt. 2*  
8:00 3-2 **Black America Since MLK: And Still  
I Rise** "Keep Your Head Up/Touch the  
Sky," Pt. 2  
9:00 3-1 *Nature "Sex, Lies and Butterflies"*  
3-3 *Start Up*  
9:30 3-3 *Joanne Weir's Plates and Places*  
10:00 3-2 **Second Opinion** "Cardiac Spouses"  
3-1 *Amanpour on PBS*  
3-3 *Masterpiece "Downton Abbey," Pt. 2*  
10:30 3-2 **This Old House** "Move in a Day"  
3-1 *Beyond 100 Days*  
11:00 3-2 **Amanpour on PBS**  
3-1 *PBS NewsHour*  
11:30 3-2 **Beyond 100 Days**  
3-3 *Rick Steves' Europe*  
12:00 3-2 **PBS NewsHour**  
3-1 *Black America Since MLK:  
And Still I Rise, Pt. 2*  
3-3 *Well Read*

### Thursday 5th

5:00 3-1 *Classical Stretch*  
5:30 3-1 *Wai Lana Yoga*  
6:00 3-1 *IQ: Smartparent*  
6:30 3-1 *Travels with Darley*  
7:00 3-1 *Paving the Way: The National Park-  
to-Park Highway, Pt. 1*  
8:00 3-1 *Antiques Roadshow*  
9:00 3-1 *Fons & Porters Love of Quilting*  
9:30 3-1 *Quilt in a Day*  
10:00 3-1 *Knit and Crochet Now!*  
10:30 3-1 *It's Sew Easy*  
11:00 3-1 *Classical Stretch*  
11:30 3-1 *Wai Lana Yoga*  
12:00 3-1 *Christopher Kimball's Milk Street*  
12:30 3-1 *Chef's Life*

1:00 3-1 *Ellie's Real Good Food*  
1:30 3-1 *Joanne Weir's Plates and Places*  
2:00 3-1 *Paving the Way: The National Park-  
to-Park Highway, Pt. 1*  
3:00 3-1 *Science Goes to the Movies*  
3:30 3-1 *Museum Access*  
4:00 3-1 *Himalaya Connection*  
5:00 3-1 *News 3 New Mexico*  
5:30 3-1 *Nightly Business Report*  
6:00 3-1 *PBS NewsHour*  
7:00 3-2 **Music Row: Nashville's Most  
Famous Neighborhood**  
3-1 *Song of the Mountains*  
8:00 3-2 **Song of the Mountains** "Molly  
Jeanne/Michael Reno Harrell/Mike  
Stevens"  
3-1 *Red Green Show*  
8:30 3-1 *Sportslook*  
9:00 3-2 **Sportslook**  
3-1 *Creative Living*  
3-3 *Roadtrip Nation*  
9:30 3-2 **Red Green Show** "Flying Blind"  
3-1 *Spectrum: A Story of the Mind*  
3-3 *Science Goes to the Movies*  
10:00 3-2 **Music City Roots**  
3-1 *Amanpour on PBS*  
3-3 *Nature*  
10:30 3-1 *Beyond 100 Days*  
11:00 3-2 **Amanpour on PBS**  
3-1 *PBS NewsHour*  
3-3 *Himalaya Connection*  
11:30 3-2 **Beyond 100 Days**  
12:00 3-2 **PBS NewsHour**  
3-1 *Masterpiece "Downton Abbey," Pt. 2*  
3-3 *Closer to Truth*

### Friday 6th

5:00 3-1 *Classical Stretch*  
5:30 3-1 *Wai Lana Yoga*  
6:00 3-1 *America's Heartland*  
6:30 3-1 *Garden Smart*  
7:00 3-1 *Song of the Mountains*  
8:00 3-1 *Bluegrass Underground*  
8:30 3-1 *Music Voyager*  
9:00 3-1 *Globe Trekker*  
10:00 3-1 *Joy of Painting*  
10:30 3-1 *Beauty of Oil Painting*  
11:00 3-1 *Classical Stretch*  
11:30 3-1 *Sit and Be Fit*  
12:00 3-1 *This Old House Hour*  
1:00 3-1 *Make It Artsy*  
1:30 3-1 *Welcome to My Studio*  
2:00 3-1 *Growing Bolder*  
2:30 3-1 *Two for the Road*  
3:00 3-1 *Globe Trekker*  
4:00 3-1 *American Health Journal*  
4:30 3-1 *Great Decisions in Foreign Policy*  
5:00 3-1 *News 3 New Mexico*  
5:30 3-1 *Nightly Business Report*  
6:00 3-1 *PBS NewsHour*  
7:00 3-2 **Market to Market**  
3-1 *Washington Week*  
7:30 3-2 **Consuelo Mack WealthTrack**  
3-1 *#Metoo, Now What?*  
8:00 3-2 **Washington Week**  
3-1 *Himalaya Connection*  
8:30 3-2 **#Metoo, Now What?**  
9:00 3-2 **Spying on the Royals, Pt. 1**  
3-1 *Price of Peace: A Personal  
Exploration*  
3-3 *This Old House Hour*  
10:00 3-2 **Masterpiece** "Child in Time"  
3-1 *Amanpour on PBS*  
3-3 *Woodwright's Shop*  
10:30 3-1 *BBC World News*  
3-3 *Craftsman's Legacy*  
11:00 3-1 *PBS NewsHour*  
3-3 *American Woodshop*  
11:30 3-2 **Little Women: A Timeless Story**  
3-3 *Joy of Painting*

12:00 3-2 **PBS NewsHour**  
3-1 *Soundbreaking*  
3-3 *Start Up*

### Saturday 7th

6:00 3-2 **Woodsmith Shop** "Details of  
Craftsmanship: Finishing"  
6:30 3-2 **American Woodshop** "Arts and Crafts  
Luminaries"  
7:00 3-2 **Project Smoke** "Smoke in a Hurry"  
7:30 3-2 **America's Test Kitchen**  
8:00 3-2 **Cook's Country** "Smothered and  
Dowdies"  
8:30 3-2 **Great British Baking Show**  
"Desserts"  
9:30 3-2 **Motorweek**  
10:00 3-2 **P. Allen Smith's Garden Home**  
"Chef vs. Chef"  
10:30 3-2 **Taste of History**  
"Charles Thompson's Great Seal of  
the United States"  
11:00 3-2 **Paint This with Jerry Yarnell**  
"Joshua Tree National Park," Pt. 3  
3-1 *BBQ With Franklin*  
11:30 3-2 **Joy of Painting** "Mountain by the  
Sea"  
3-1 *Ask This Old House*  
12:00 3-2 **Beauty of Oil Painting**  
"Impressionistic Landscape"  
3-1 *This Old House*  
12:30 3-2 **Quilt in a Day** "Twin Sisters"  
3-1 *This Old House*  
1:00 3-2 **Quilting Arts** "Color and Value"  
3-1 *Ask This Old House*  
1:30 3-2 **Fons & Porter's Love of Quilting**  
"Country Fair"  
3-1 *Motorweek*  
2:00 3-2 **Creative Living**  
3-1 *Woodwright's Shop*  
2:30 3-2 **Jazzy Vegetarian** "Holidays Made  
Easy"  
3-1 *Chef's Life*  
3:00 3-2 **Knit and Crochet Now!** "Mosaic Stitch  
Scarves"  
3-1 *Martha Stewart's Cooking School*  
3:30 3-2 **This Old House**  
3-1 *Martha Bakes*  
4:00 3-2 **Ask This Old House**  
3-1 *Globe Trekker*  
4:30 3-2 **Welcome to My Studio**  
"Paint and Character"  
5:00 3-2 **Sewing with Nancy** "Strip-by-Strip  
Patchwork Quilts," Pt. 1  
3-1 *PBS NewsHour Weekend*  
5:30 3-2 **It's Sew Easy** "Distinctive Style"  
3-1 *Report from Santa Fe*  
6:00 3-2 **Report from Santa Fe**  
3-1 *Antiques Roadshow*  
6:30 3-2 **America's Heartland**  
7:00 3-2 **Lawrence Welk Show** "April Showers"  
3-1 *Soundbreaking, Pt. 4*  
8:00 3-2 **Fall and Rise of Reginald Perrin**  
3-1 *Soundbreaking, Pt. 5*  
8:30 3-2 **Red Green Show** "Flying Blind"  
9:00 3-2 **Austin City Limits** "Cyndi Lauper"  
3-1 *Soundbreaking, Pt. 6*  
3-3 *Lawrence Welk Show*  
10:00 3-2 **Himalaya Connection**  
3-1 *Austin City Limits*  
3-3 *Classic Gospel*  
11:00 3-2 **Nature** "Sex, Lies, and Butterflies"  
3-1 *Himalaya Connection*  
3-3 *Bluegrass Underground*  
11:30 3-3 *Sun Studio Sessions*  
12:00 3-2 **Austin City Limits** "Cyndi Lauper"  
3-1 *Nature "Sex, Lies, and Butterflies"*  
3-3 *Backstage Pass*

### Sunday 8th

6:00 3-2 **Samantha Brown's Places to  
Love** "Xi'an, China"

6:30 3-2 **Second Opinion** "Pneumonia"  
7:00 3-2 **Antiques Roadshow** "Little Rock"  
8:00 3-2 **Classic Gospel** "Bradley Welker, Call Me Old-Fashioned"  
9:00 3-2 **Joy of Music** "Paris," Pt. 1  
9:30 3-2 **Music and the Spoken Word**  
10:00 3-2 **Four Sons and All Their Sons: A Passover Tale**  
11:00 3-2 **Globe Trekker** "Papua New Guinea Islands"  
3-1 *Washington Week*  
11:30 3-1 *To the Contrary with Bonnie Erbe*  
12:00 3-2 **Cultura**  
3-1 *Today's Wild West*  
12:30 3-2 **In Focus**  
3-1 *Start Up*  
1:00 3-1 *Scully/The World Show*  
1:30 3-2 **Travel Detective** "Rating your Tour Guide"  
3-1 *Market to Market*  
2:00 3-2 **Closer to Truth** "How Did the Universe Begin?"  
3-1 *P. Allen Smith's Garden Home*  
2:30 3-2 **Well Read** "Gerda Saunders/ Memory's Last Breath"  
3-1 *Weekends with Yankee*  
3:00 3-2 **Second Opinion** "Advances in Alzheimer's Disease"  
3-1 *Great British Baking Show*  
3:30 3-2 **Healthy Minds** "Managing Stress"  
4:00 3-2 **Classic Gospel** "Johnny Cash"  
3-1 *Nova "Chinese Chariot Revealed"*  
5:00 3-2 **PBS NewsHour Weekend**  
3-1 *Well Read*  
5:30 3-2 **Washington Week**  
3-1 *Fall and Rise of Reginald Perrin*  
6:00 3-2 **Four Sons and All Their Sons: A Passover Tale**  
3-1 *Call the Midwife*  
7:00 3-2 **Call the Midwife**, Pt. 4  
3-1 *Masterpiece "Unforgotten," Pt. 1*  
8:00 3-2 **Masterpiece** "Unforgotten," Pt. 1  
8:30 3-1 *On Story*  
9:00 3-1 *Independent Lens "When God Sleeps"*  
3-3 *Daytripper*  
9:30 3-2 **Spying on the Royals**, Pt. 1  
3-3 *America's Heartland*  
10:00 3-3 *This Old House*  
10:30 3-2 **World of Ice Dance International**  
3-1 *Live at the Charleston Music Hall*  
3-3 *Ask This Old House*  
11:00 3-1 *Austin City Limits*  
3-3 *Motorweek*  
11:30 3-2 **Dream of Italy** "Venice"  
3-3 *Woodwright's Shop*  
12:00 3-2 **Himalaya Connection**  
3-1 *Masterpiece "Unforgotten," Pt. 1*  
3-3 *Nature*

### Monday 9th

5:00 3-1 *Classical Stretch*  
5:30 3-1 *Wai Lana Yoga*  
6:00 3-1 *Nature "Sex, Lies, and Butterflies"*  
7:00 3-1 *In the Americas with David Yetman*  
7:30 3-1 *Travelscope*  
8:00 3-1 *Rick Steves' Europe*  
8:30 3-1 *My Greek Table*  
9:00 3-1 *Pati's Mexican Table*  
9:30 3-1 *New Orleans Cooking*  
10:00 3-1 *P. Allen Smith's Garden Home*  
10:30 3-1 *Jazzy Vegetarian*  
11:00 3-1 *Classical Stretch*  
11:30 3-1 *Sit and Be Fit*  
12:00 3-1 *Great British Baking Show*  
1:00 3-1 *Masterpiece "Unforgotten," Pt. 1*  
2:30 3-1 *On Story*  
3:00 3-1 *Roadtrip Nation*  
3:30 3-1 *Visionkeepers*  
4:00 3-1 *American Heartland*  
4:30 3-1 *Daytripper*  
5:00 3-1 *Amanpour on PBS*

5:30 3-1 *Nightly Business Report*  
6:00 3-1 *PBS NewsHour*  
7:00 3-2 **Antiques Roadshow** "Portland"  
3-1 *Spying on the Royals, Pt. 1*  
8:00 3-2 **Antiques Roadshow** "Little Rock"  
3-1 *Antiques Roadshow*  
9:00 3-2 **Independent Lens** "The Art of the Shine"  
3-1 *Poetry in America*  
3-3 *Great British Baking Show*  
9:30 3-1 *Poetry in America*  
10:00 3-2 **Music Row: Nashville's Most Famous Neighborhood**  
3-1 *Amanpour on PBS*  
3-3 *Masterpiece "Unforgotten," Pt. 1*  
10:30 3-1 *Beyond 100 Days*  
11:00 3-2 **Antiques Roadshow** "Portland"  
3-1 *PBS NewsHour*  
11:30 3-3 *On Story*  
12:00 3-2 **PBS NewsHour**  
3-1 *Independent Lens "The Art of the Shine"*  
3-3 *Call the Midwife*

### Tuesday 10th

5:00 3-1 *Classical Stretch*  
5:30 3-1 *Wai Lana Yoga*  
6:00 3-1 *Antiques Roadshow*  
7:00 3-1 *Spying on the Royals, Pt. 1*  
8:00 3-1 *Makers*  
9:00 3-1 *Healthy Body Healthy Mind*  
9:30 3-1 *Second Opinion*  
10:00 3-1 *Closer to Truth*  
10:30 3-1 *Healthy Minds*  
11:00 3-1 *Classical Stretch*  
11:30 3-1 *Wai Lana Yoga*  
12:00 3-1 *Food Over 50*  
12:30 3-1 *Taste of History*  
1:00 3-1 *Call the Midwife*  
2:00 3-1 *Last Tango in Halifax, Pt. 1*  
3:00 3-1 *Antiques Roadshow*  
4:00 3-1 *Consuelo Mack WealthTrack*  
4:30 3-1 *Start Up*  
5:00 3-1 *Amanpour on PBS*  
5:30 3-1 *Nightly Business Report*  
6:00 3-1 *PBS NewsHour*  
7:00 3-2 **Secrets of the Dead** "Hannibal in the Alps"  
3-1 *Without a Net: The Digital Divide*  
8:00 3-2 **American Experience** "Perfect Crime"  
3-1 *Secrets of the Dead*  
9:00 3-2 **You Should Know**  
3-1 *American Experience "Perfect Crime"*  
3-3 *Antiques Roadshow*  
9:30 3-2 **Creative Living**  
10:00 3-2 **Frontline** "Trump's Takeover"  
3-1 *Amanpour on PBS*  
3-3 *History Detectives*  
10:30 3-1 *Beyond 100 Days*  
11:00 3-2 **Amanpour on PBS**  
3-1 *PBS NewsHour*  
3-3 *Globe Trekker*  
11:30 3-2 **Beyond 100 Days**  
12:00 3-2 **PBS NewsHour**  
3-1 *Frontline "Trump's Takeover"*  
3-3 *America's Heartland*

### Wednesday 11th

5:00 3-1 *Classical Stretch*  
5:30 3-1 *Wai Lana Yoga*  
6:00 3-1 *Consuelo Mack WealthTrack*  
6:30 3-1 *Growing Bolder*  
7:00 3-1 *Samantha Brown's Places to Love*  
7:30 3-1 *Crossing South*  
8:00 3-1 *Without a Net: The Digital Divide*  
9:00 3-1 *Craftsman's Legacy*  
9:30 3-1 *Rough Cut*  
10:00 3-1 *American Woodshop*  
10:30 3-1 *Woodwright's Shop*  
11:00 3-1 *Classical Stretch*  
11:30 3-1 *Sit and Be Fit*

12:00 3-1 *Sara's Weeknight Meals*  
12:30 3-1 *Cook's Country*  
1:00 3-1 *Masterpiece "Downton Abbey," Pt. 3*  
2:30 3-1 *Rick Steves' Europe*  
3:00 3-1 *Music Voyager*  
3:30 3-1 *Travels with Darley*  
4:00 3-1 *Lidia's Kitchen*  
4:30 3-1 *America's Test Kitchen*  
5:00 3-1 *News 3 New Mexico*  
5:30 3-1 *Nightly Business Report*  
6:00 3-1 *PBS NewsHour*  
7:00 3-2 **Nature** "Moose: Life of a Twig Eater"  
3-1 *Trezoros: The Lost Jews of Kastoria*  
8:00 3-2 **Nova** "Holocaust Escape Tunnel"  
8:30 3-1 *Project Asteroid: Mapping Bennu*  
9:00 3-2 **GI Jews—Jewish Americans in WWII**  
3-1 *Nature "Moose: Life of a Twig Eater"*  
3-3 *Start Up*  
9:30 3-3 *Joanne Weir's Plates and Places*  
10:00 3-1 *Amanpour on PBS*  
3-3 *Masterpiece "Downton Abbey," Pt. 3*  
10:30 3-2 **This Old House** "Charleston/Southern Charm"  
3-1 *Beyond 100 Days*  
11:00 3-2 **Amanpour on PBS**  
3-1 *PBS NewsHour*  
11:30 3-2 **Beyond 100 Days**  
3-3 *Rick Steves' Europe*  
12:00 3-2 **PBS NewsHour**  
3-1 *Nova "Holocaust Escape Tunnel"*  
3-3 *Well Read*

### Thursday 12th

5:00 3-1 *Classical Stretch*  
5:30 3-1 *Wai Lana Yoga*  
6:00 3-1 *IQ: Smartparent*  
6:30 3-1 *Travels with Darley*  
7:00 3-1 *Paving the Way: The National Park-to-Park Highway, Pt. 2*  
8:00 3-1 *Antiques Roadshow*  
9:00 3-1 *Fons & Porter's Love of Quilting*  
9:30 3-1 *Quilt in a Day*  
10:00 3-1 *Knit and Crochet Now!*  
10:30 3-1 *It's Sew Easy*  
11:00 3-1 *Classical Stretch*  
11:30 3-1 *Wai Lana Yoga*  
12:00 3-1 *Christopher Kimball's Milk Street*  
12:30 3-1 *Chef's Life*  
1:00 3-1 *Ellie's Real Good Food*  
1:30 3-1 *Joanne Weir's Plates and Places*  
2:00 3-1 *Paving the Way: The National Park-to-Park Highway, Pt. 2*  
3:00 3-1 *Science Goes to the Movies*  
3:30 3-1 *Museum Access*  
4:00 3-1 *Nova "Holocaust Escape Tunnel"*  
5:00 3-1 *News 3 New Mexico*  
5:30 3-1 *Nightly Business Report*  
6:00 3-1 *PBS NewsHour*  
7:00 3-2 **Frontline** "Trump's Takeover"  
3-1 *GI Jews - Jewish Americans in WWII*  
8:00 3-2 **Song of the Mountains** "Troublesome Hollow Featuring Jim Buchanan"  
8:30 3-1 *Sportslook*  
9:00 3-2 **Sportslook**  
3-1 *Creative Living*  
3-3 *Roadtrip Nation*  
9:30 3-2 **Red Green Show** "The Bigger the Better"  
3-1 *You Should Know*  
3-3 *Science Goes to the Movies*  
10:00 3-2 **Front and Center** "Liam Gallagher"  
3-1 *Amanpour on PBS*  
3-3 *Nature*  
10:30 3-1 *Beyond 100 Days*  
11:00 3-2 **Amanpour on PBS**  
3-1 *PBS NewsHour*  
3-3 *Nova*  
11:30 3-2 **Beyond 100 Days**  
12:00 3-2 **PBS NewsHour**  
3-1 *Masterpiece "Downton Abbey," Pt. 3*  
3-3 *Closer to Truth*



## Friday 13th

5:00	3-1	Classical Stretch
5:30	3-1	Wai Lana Yoga
6:00	3-1	America's Heartland
6:30	3-1	Garden Smart
7:00	3-1	Song of the Mountains
8:00	3-1	Bluegrass Underground
8:30	3-1	Music Voyager
9:00	3-1	Globe Trekker
10:00	3-1	Joy of Painting
10:30	3-1	Beauty of Oil Painting
11:00	3-1	Classical Stretch
11:30	3-1	Sit and Be Fit
12:00	3-1	This Old House Hour
1:00	3-1	Make it Artsy
1:30	3-1	Welcome to My Studio
2:00	3-1	Growing Bolder
2:30	3-1	Two for the Road
3:00	3-1	Globe Trekker
4:00	3-1	American Health Journal
4:30	3-1	Great Decisions in Foreign Policy
5:00	3-1	News 3 New Mexico
5:30	3-1	Nightly Business Report
6:00	3-1	PBS NewsHour
7:00	3-2	Market to Market
	3-1	Washington Week
7:30	3-2	Consuelo Mack WealthTrack
	3-1	In Principle
8:00	3-2	Washington Week
	3-1	Nova "Holocaust Escape Tunnel"
8:30	3-2	In Principle, Pt. 1
9:00	3-2	Spying on the Royals, Pt. 2
	3-1	Frontline "Trump's Takeover"
	3-3	This Old House Hour
10:00	3-2	Masterpiece "Unforgotten," Pt. 1
	3-1	Amanpour on PBS
	3-3	Woodwright's Shop
10:30	3-1	BBC World News
	3-3	Craftsman's Legacy
11:00	3-1	PBS NewsHour
	3-3	American Woodshop
11:30	3-2	Travelscope
	3-3	Joy of Painting
12:00	3-2	PBS NewsHour
	3-1	Soundbreaking, Pt. 7
	3-3	Start Up

## Saturday 14th

6:00	3-2	Rough Cut
6:30	3-2	American Woodshop
		"Making Custom Knives"
7:00	3-2	Project Smoke "Tropical Smoke"
7:30	3-2	America's Test Kitchen
8:00	3-2	Cook's Country "BBQ Thighs and Fried Peach Pies"
8:30	3-2	Great British Baking Show
		"Alternative Ingredients"
9:30	3-2	Motorweek
10:00	3-2	P. Allen Smith's Garden Home
		"Sensory Experiences"
10:30	3-2	Taste of History
		"George Washington in Barbados"
11:00	3-2	Paint This with Jerry Yarnell
		"Joshua Tree National Park," Pt. 4
	3-1	BBQ with Franklin
11:30	3-2	Joy of Painting "Mountain Stream"
	3-1	Ask This Old House
12:00	3-2	Beauty of Oil Painting
		"Southwest Cactus Flower"
	3-1	This Old House
12:30	3-2	Quilt in a Day "Baskets and Bows"
	3-1	This Old House
1:00	3-2	Quilting Arts "Cut it Out!"
	3-1	Ask This Old House
1:30	3-2	Fons & Porter's Love of Quilting
		"Pixie Wings"
	3-1	Motorweek
2:00	3-2	Creative Living
	3-1	Woodwright's Shop

2:30	3-2	Jazzy Vegetarian "Pizza with a Twist!"
	3-1	Chef's Life
3:00	3-2	Knit and Crochet Now!
		"Artsy Afghans"
	3-1	Martha Stewart's Cooking School
3:30	3-2	This Old House "Charleston/Demo Time"
	3-1	Martha Bakes
4:00	3-2	Ask This Old House
	3-1	Globe Trekker
4:30	3-2	Welcome to My Studio
		"The Importance of Perspective"
5:00	3-2	Sewing with Nancy "Strip-by-Strip Patchwork Quilts"
	3-1	PBS NewsHour Weekend
5:30	3-2	It's Sew Easy "Costume Fun"
	3-1	Report from Santa Fe
6:00	3-2	Report from Santa Fe
	3-1	Antiques Roadshow
6:30	3-2	America's Heartland
7:00	3-2	Lawrence Welk Show "Hooray for Hollywood (1975)"
	3-1	Soundbreaking, Pt. 7
8:00	3-2	Fall and Rise of Reginald Perrin
	3-1	Soundbreaking, Pt. 8
8:30	3-2	Red Green Show "The Bigger the Better"
9:00	3-2	Austin City Limits "James Taylor"
	3-1	Soundstage
	3-3	Lawrence Welk Show
10:00	3-2	Nova "Holocaust Escape Tunnel"
	3-1	Austin City Limits
	3-3	Classic Gospel
11:00	3-2	Nature "Moose: Life of a Twig Eater"
	3-1	Nova "Holocaust Escape Tunnel"
	3-3	Bluegrass Underground
11:30	3-3	Sun Studio Sessions
12:00	3-2	Austin City Limits "James Taylor"
	3-1	Nature "Moose: Life of a Twig Eater"
	3-3	Backstage Pass

## Sunday 15th

6:00	3-2	Samantha Brown's Places to Love "Ireland's Northwest Coast"
6:30	3-2	Second Opinion "Autism"
7:00	3-2	Antiques Roadshow "Little Rock"
8:00	3-2	Classic Gospel "Circuit Rider"
9:00	3-2	Joy of Music "Memorable Moments," Pt. 3
9:30	3-2	Music and the Spoken Word
10:00	3-2	Secrets of the Dead "Hannibal in the Alps"
11:00	3-2	Globe Trekker "Food Hour: The Story of Beef"
	3-1	Washington Week
11:30	3-1	To the Contrary with Bonnie Erbe
12:00	3-2	New Mexico True TV "Albuquerque"
	3-1	Poetry in America
12:30	3-2	In Focus
	3-1	Start Up
1:00	3-1	Scully/The World Show
1:30	3-2	Travel Detective "Decline & Fall of Air Service to U.S. Cities"
	3-1	Market to Market
2:00	3-2	Closer to Truth "Is the Universe Theologically Ambiguous?"
	3-1	P. Allen Smith's Garden Home
2:30	3-2	Well Read "Sherman Alexie/You Don't Have to Say You Love Me"
	3-1	Weekends with Yankee
3:00	3-2	Second Opinion "Medical Marijuana"
	3-1	Great British Baking Show
3:30	3-2	Healthy Minds "Brain Science and Art"
4:00	3-2	Classic Gospel "Jeff & Sheri Easter"
	3-1	Nova "Holocaust Escape Tunnel"
5:00	3-2	PBS NewsHour Weekend
	3-1	Well Read
5:30	3-2	Washington Week
	3-1	Fall and Rise of Reginald Perrin

6:00	3-2	Stealing Your Life with Frank Abagnale
	3-1	Call the Midwife
7:00	3-2	Call the Midwife, Pt. 5
	3-1	Masterpiece "Unforgotten," Pt. 2
8:00	3-2	Masterpiece "Unforgotten," Pt. 2
8:30	3-1	On Story
9:00	3-1	Independent Lens "The Art of the Shine"
	3-3	Daytripper
9:30	3-2	Spying on the Royals, Pt. 2
	3-3	America's Heartland
10:00	3-1	Arts in Context
	3-3	This Old House
10:30	3-2	American Experience
		"Perfect Crime"
	3-1	Live at the Charleston Music Hall
	3-3	Ask This Old House
11:00	3-1	Austin City Limits
	3-3	Motorweek
11:30	3-2	Dream of Italy "Bologna"
	3-3	Woodwright's Shop
12:00	3-2	Nova "Holocaust Escape Tunnel"
	3-1	Masterpiece "Unforgotten," Pt. 2
	3-3	Nature

## Monday 16th

5:00	3-1	Classical Stretch
5:30	3-1	Wai Lana Yoga
6:00	3-1	Nature "Moose: Life of a Twig Eater"
7:00	3-1	In the Americas with David Yetman
7:30	3-1	Travelscope
8:00	3-1	Rick Steves' Europe
8:30	3-1	My Greek Table
9:00	3-1	Pati's Mexican Table
9:30	3-1	New Orleans Cooking
10:00	3-1	P. Allen Smith's Garden Home
10:30	3-1	Jazzy Vegetarian
11:00	3-1	Classical Stretch
11:30	3-1	Sit and Be Fit
12:00	3-1	Great British Baking Show
1:00	3-1	Masterpiece "Unforgotten," Pt. 2
2:30	3-1	On Story
3:00	3-1	Roadtrip Nation
3:30	3-1	Visionkeepers
4:00	3-1	American Heartland
4:30	3-1	Daytripper
5:00	3-1	Amanpour on PBS
5:30	3-1	Nightly Business Report
6:00	3-1	PBS NewsHour
7:00	3-2	Antiques Roadshow "Portland"
	3-1	Spying on the Royals, Pt. 2
8:00	3-2	Antiques Roadshow "Little Rock"
	3-1	Antiques Roadshow
9:00	3-2	Independent Lens
		"What Lies Upstream"
	3-1	Poetry in America
	3-3	Great British Baking Show
9:30	3-1	Trust Docs
10:00	3-1	Amanpour on PBS
	3-3	Masterpiece "Unforgotten," Pt. 2
10:30	3-2	Burt Wolf: Travels & Traditions
		"Making a Restaurant," Pt. 2
	3-1	Beyond 100 Days
11:00	3-2	Antiques Roadshow "Portland"
	3-1	PBS NewsHour
11:30	3-3	On Story
12:00	3-2	PBS NewsHour
	3-1	Independent Lens
		"What Lies Upstream"
	3-3	Call the Midwife

## Tuesday 17th

5:00	3-1	Classical Stretch
5:30	3-1	Wai Lana Yoga
6:00	3-1	Antiques Roadshow
7:00	3-1	Spying on the Royals, Pt. 2
8:00	3-1	Defining Hope
9:00	3-1	Healthy Body Healthy Mind
9:30	3-1	Second Opinion
10:00	3-1	Closer to Truth

10:30 3-1 *Healthy Minds*  
 11:00 3-1 *Classical Stretch*  
 11:30 3-1 *Wai Lana Yoga*  
 12:00 3-1 *Food Over 50*  
 12:30 3-1 *Taste of Mystery*  
 1:00 3-1 *Call the Midwife, Pt. 5*  
 2:00 3-1 *Last Tango in Halifax, Pt. 2*  
 3:00 3-1 *Antiques Roadshow*  
 4:00 3-1 *Consuelo Mack WealthTrack*  
 4:30 3-1 *Start Up*  
 5:00 3-1 *Amanpour on PBS*  
 5:30 3-1 *Nightly Business Report*  
 6:00 3-1 *PBS NewsHour*  
 7:00 3-2 *Civilizations* "The Second Moment of Creation," Pt. 1  
 3-1 *They Shall Not Perish: The Story of Near East Relief*  
 8:00 3-2 *American Experience* "The Massie Affair"  
 3-1 *Mystery of the Mountain: Hidden in Plain View*  
 9:00 3-2 *You Should Know*  
 3-1 *American Experience* "The Massie Affair"  
 3-3 *Antiques Roadshow*  
 9:30 3-2 *Creative Living*  
 10:00 3-2 *Frontline* "McCain"  
 3-1 *Amanpour on PBS*  
 3-3 *History Detectives*  
 10:30 3-1 *Beyond 100 Days*  
 11:00 3-2 *Amanpour on PBS*  
 3-1 *PBS NewsHour*  
 3-3 *Globe Trekker*  
 11:30 3-2 *Beyond 100 Days*  
 12:00 3-2 *PBS NewsHour*  
 3-1 *Frontline* "McCain"  
 3-3 *America's Heartland*

### Wednesday 18th

5:00 3-1 *Classical Stretch*  
 5:30 3-1 *Wai Lana Yoga*  
 6:00 3-1 *Consuelo Mack WealthTrack*  
 6:30 3-1 *Growing Bolder*  
 7:00 3-1 *Samantha Brown's Places to Love*  
 7:30 3-1 *Crossing South*  
 8:00 3-1 *Mystery of the Mountain: Hidden in Plain View*  
 9:00 3-1 *Craftsman's Legacy*  
 9:30 3-1 *Rough Cut*  
 10:00 3-1 *American Woodshop*  
 10:30 3-1 *Woodwright's Shop*  
 11:00 3-1 *Classical Stretch*  
 11:30 3-1 *Sit and Be Fit*  
 12:00 3-1 *Sara's Weeknight Meals*  
 12:30 3-1 *Cook's Country*  
 1:00 3-1 *Masterpiece* "Downton Abbey," Pt. 4  
 2:30 3-1 *Rick Steves' Europe*  
 3:00 3-1 *Music Voyager*  
 3:30 3-1 *Travels with Darley*  
 4:00 3-1 *Lidia's Kitchen*  
 4:30 3-1 *America's Test Kitchen*  
 5:00 3-1 *News 3 New Mexico*  
 5:30 3-1 *Nightly Business Report*  
 6:00 3-1 *PBS NewsHour*  
 7:00 3-2 *Nova* "Living with the Weather Machine"  
 3-1 *Civilizations, Pt. 1*  
 8:00 3-1 *POV* "Bill Nye: Science Guy"  
 9:00 3-2 *POV* "Bill Nye: Science Guy"  
 3-3 *Start Up*  
 9:30 3-1 *New Environmentalists*  
 3-3 *Joanne Weir's Plates and Places*  
 10:00 3-1 *Amanpour on PBS*  
 3-3 *Masterpiece* "Downton Abbey," Pt. 4  
 10:30 3-2 *This Old House* "Charleston/Demo Time"  
 3-1 *Beyond 100 Days*  
 11:00 3-2 *Amanpour on PBS*  
 3-1 *PBS NewsHour*  
 11:30 3-2 *Beyond 100 Days*  
 3-3 *Rick Steves' Europe*

12:00 3-2 *PBS NewsHour*  
 3-1 *Nova* "Living with the Weather Machine"  
 3-3 *Well Read*

### Thursday 19th

5:00 3-1 *Classical Stretch*  
 5:30 3-1 *Wai Lana Yoga*  
 6:00 3-1 *IQ: Smartparent*  
 6:30 3-1 *Travels with Darley*  
 7:00 3-1 *Civilizations, Pt. 1*  
 8:00 3-1 *Antiques Roadshow*  
 9:00 3-1 *Fons & Porter's Love of Quilting*  
 9:30 3-1 *Quilt in a Day*  
 10:00 3-1 *Knit and Crochet Now!*  
 10:30 3-1 *It's Sew Easy*  
 11:00 3-1 *Classical Stretch*  
 11:30 3-1 *Wai Lana Yoga*  
 12:00 3-1 *Christopher Kimball's Milk Street*  
 12:30 3-1 *Chef's Life*  
 1:00 3-1 *Ellie's Real Good Food*  
 1:30 3-1 *Joanne Weir's Plates and Places*  
 2:00 3-1 *Earthcaster*  
 3:00 3-1 *Nova* "Living with the Weather Machine"  
 5:00 3-1 *News 3 New Mexico*  
 5:30 3-1 *Nightly Business Report*  
 6:00 3-1 *PBS NewsHour*  
 7:00 3-2 *Frontline* "McCain"  
 3-1 *Song of the Mountains*  
 8:00 3-2 *Song of the Mountains* "David Holt & Josh Goforth"  
 3-1 *Red Green Show*  
 8:30 3-1 *Sportslook*  
 9:00 3-2 *Sportslook*  
 3-1 *Creative Living*  
 3-3 *Roadtrip Nation*  
 9:30 3-2 *Red Green Show* "The Big Retreat"  
 3-1 *You Should Know*  
 3-3 *Science Goes to the Movies*  
 10:00 3-2 *Front and Center* "CMA Songwriters Series Presents: Luke Combs & Kane Brown"  
 3-1 *Amanpour on PBS*  
 3-3 *Nova* "Weather Machine"  
 10:30 3-1 *Beyond 100 Days*  
 11:00 3-2 *Amanpour on PBS*  
 3-1 *PBS NewsHour*  
 11:30 3-2 *Beyond 100 Days*  
 12:00 3-2 *PBS NewsHour*  
 3-1 *Masterpiece* "Downton Abbey," Pt. 4  
 3-3 *Closer to Truth*

### Friday 20th

5:00 3-1 *Classical Stretch*  
 5:30 3-1 *Wai Lana Yoga*  
 6:00 3-1 *America's Heartland*  
 6:30 3-1 *Garden Smart*  
 7:00 3-1 *Song of the Mountains*  
 8:00 3-1 *Bluegrass Underground*  
 8:30 3-1 *Music Voyager*  
 9:00 3-1 *Globe Trekker*  
 10:00 3-1 *Joy of Painting*  
 10:30 3-1 *Beauty of Oil Painting*  
 11:00 3-1 *Classical Stretch*  
 11:30 3-1 *Sit and Be Fit*  
 12:00 3-1 *This Old House Hour*  
 1:00 3-1 *Make it Artsy*  
 1:30 3-1 *Welcome to My Studio*  
 2:00 3-1 *Growing Bolder*  
 2:30 3-1 *Two for the Road*  
 3:00 3-1 *Globe Trekker*  
 4:00 3-1 *American Health Journal*  
 4:30 3-1 *Great Decisions in Foreign Policy*  
 5:00 3-1 *News 3 New Mexico*  
 5:30 3-1 *Nightly Business Report*  
 6:00 3-1 *PBS NewsHour*  
 7:00 3-2 *Market to Market*  
 3-1 *Washington Week*  
 7:30 3-2 *Consuelo Mack WealthTrack*  
 3-1 *In Principle*

8:00 3-2 *Washington Week*  
 3-1 *Nova* "Living with the Weather Machine"  
 8:30 3-2 *In Principle, Pt. 2*  
 9:00 3-2 *Live From Lincoln Center* "Sutton Foster in Concert"  
 3-3 *This Old House Hour*  
 10:00 3-2 *Masterpiece* "Unforgotten," Pt. 2  
 3-1 *Frontline* "McCain"  
 3-3 *Woodwright's Shop*  
 10:30 3-3 *Craftsman's Legacy*  
 11:00 3-1 *PBS NewsHour*  
 3-3 *American Woodshop*  
 11:30 3-2 *Travelscope*  
 3-3 *Joy of Painting*  
 12:00 3-2 *PBS NewsHour*  
 3-1 *Live From Lincoln Center*  
 3-3 *Start Up*

### Saturday 21st

6:00 3-2 *Rough Cut*  
 6:30 3-2 *American Woodshop* "Wooden Bicycles"  
 7:00 3-2 *Project Smoke* "Smokehouse Cocktail Party"  
 7:30 3-2 *America's Test Kitchen*  
 8:00 3-2 *Cook's Country* "Ribs and Mashed Potatoes Revisited"  
 8:30 3-2 *Great British Baking Show* "Pastry"  
 9:30 3-2 *Motorweek*  
 10:00 3-2 *P. Allen Smith's Garden Home* "For the Pets"  
 10:30 3-2 *Taste of History* "Dr. Benjamin Rush: Father of American Psychiatry"  
 11:00 3-2 *Paint This with Jerry Yarnell* "Gray Wolf Ridge," Pt. 1  
 3-1 *BBQ with Franklin*  
 11:30 3-2 *Joy of Painting* "Warm Winter Day"  
 3-1 *Ask This Old House*  
 12:00 3-2 *Beauty of Oil Painting* "Tea Roses for Kathwren"  
 3-1 *This Old House*  
 12:30 3-2 *Quilt in a Day* "American Beauty"  
 3-1 *This Old House*  
 1:00 3-2 *Quilting Arts* "Transformations with Paint"  
 3-1 *Ask This Old House*  
 1:30 3-2 *Fons & Porter's Love of Quilting* "Liz's Lemoyne Star"  
 3-1 *Motorweek*  
 2:00 3-2 *Creative Living*  
 3-1 *Woodwright's Shop*  
 2:30 3-2 *Jazzy Vegetarian* "Breezy Brunch"  
 3-1 *Chef's Life*  
 3:00 3-2 *Knit and Crochet Now!* "Dolly Long Legs"  
 3-1 *Martha Stewart's Cooking School*  
 3:30 3-2 *This Old House* "Charleston/Brick and Mortar"  
 3-1 *Martha Bakes*  
 4:00 3-2 *Ask This Old House*  
 3-1 *Globe Trekker*  
 4:30 3-2 *Welcome to My Studio* "Factors of Composition"  
 5:00 3-2 *Sewing with Nancy* "Sewing Today's Fashion Trends - Tunics"  
 3-1 *PBS NewsHour Weekend*  
 5:30 3-2 *It's Sew Easy* "Wedding Bells"  
 3-1 *Report from Santa Fe*  
 6:00 3-2 *Report from Santa Fe*  
 3-1 *Antiques Roadshow*  
 6:30 3-2 *America's Heartland*  
 7:00 3-2 *Lawrence Welk Show* "Sights and Sounds of L.A. (1979)"  
 3-1 *Live from Lincoln Center*  
 8:00 3-2 *Fall and Rise of Reginald Perrin*  
 3-1 *Will. I. Am. Landmarks Live in Concert*  
 8:30 3-2 *Red Green Show* "The Big Retreat"

9:00 3-2 **Austin City Limits** "Leon Bridges/  
Nathaniel Rateliff & The Night Sweats"  
3-1 Soundstage  
3-3 *Lawrence Welk Show*  
10:00 3-2 **Nova** "Living with the Weather  
Machine"  
3-1 *Austin City Limits*  
3-3 *Classic Gospel*  
11:00 3-1 *Nova "Weather Machine"*  
3-3 *Bluegrass Underground*  
11:30 3-3 *Sun Studio Sessions*  
12:00 3-2 **Austin City Limits** "Leon Bridges/  
Nathaniel Rateliff & The Night Sweats"  
3-3 *Backstage Pass*

### Sunday 22nd

6:00 3-2 **Samantha Brown's Places to  
Love** "Orange County, California"  
6:30 3-2 **Second Opinion** "Colon Cancer"  
7:00 3-2 **Antiques Roadshow** "Little Rock"  
8:00 3-2 **Classic Gospel** "Mark Lowry, Dogs  
Go to Heaven"  
9:00 3-2 **Joy of Music** "Galway, Ireland"  
9:30 3-2 **Music and the Spoken Word**  
10:00 3-2 **Civilizations** "The Second Moment of  
Creation"  
11:00 3-2 **Globe Trekker** "Story of Beer"  
3-1 *Washington Week*  
11:30 3-1 *To the Contrary with Bonnie Erbe*  
12:00 3-2 **Cultura**  
3-1 *Poetry in America*  
12:30 3-2 **New Mexico In Focus**  
3-1 *Start Up*  
1:00 3-1 *Scully/The World Show*  
1:30 3-2 **Travel Detective** "Frivolous Lawsuits"  
3-1 *Market to Market*  
2:00 3-2 **Closer to Truth** "Science and the  
Future of Humanity"  
3-1 *P. Allen Smith's Garden Home*  
2:30 3-2 **Well Read** "Todd Kessler, *Discussion  
on Raising Readers*"  
3-1 *Weekends with Yankee*  
3:00 3-2 **Second Opinion**  
"Knee Replacement"  
3-1 *Great British Baking Show*  
3:30 3-2 **American Health Journal**  
4:00 3-2 **Classic Gospel** "Jerusalem"  
3-1 *Mystery of the Mountain: Hidden in  
Plain View*  
5:00 3-2 **PBS NewsHour Weekend**  
3-1 *Well Read*  
5:30 3-2 **Washington Week**  
3-1 *Fall and Rise of Reginald Perrin*  
6:00 3-2 **Live From Lincoln Center**  
"Sutton Foster in Concert"  
3-1 *Call the Midwife*  
7:00 3-2 **Call the Midwife**, Pt. 6  
3-1 *Masterpiece "Unforgotten," Pt. 3*  
8:00 3-2 **Masterpiece** "Unforgotten," Pt. 3  
8:30 3-1 *On Story*  
9:00 3-1 *Independent Lens*  
"What Lies Upstream"  
3-3 *Daytripper*  
9:30 3-2 **Civilizations** "The Second Moment of  
Creation," Pt. 1  
3-3 *America's Heartland*  
10:00 3-3 *This Old House*  
10:30 3-2 **American Experience** "The Massie  
Affair"  
3-1 *Live at the Charleston Music Hall*  
3-3 *Ask This Old House*  
11:00 3-1 *Austin City Limits*  
3-3 *Motorweek*  
11:30 3-2 **Dream of Italy** "Florence"  
3-3 *Woodwright's Shop*  
12:00 3-2 **Nova** "Living with the Weather  
Machine"  
3-1 *Masterpiece "Unforgotten," Pt. 3*  
3-3 *Nature*

### Monday 23rd

5:00 3-1 *Classical Stretch*  
5:30 3-1 *Wai Lana Yoga*  
6:00 3-1 *Nature "My Bionic Pet"*  
7:00 3-1 *In the Americas with David Yetman*  
7:30 3-1 *Travelscope*  
8:00 3-1 *Rick Steves' Europe*  
8:30 3-1 *My Greek Table*  
9:00 3-1 *Pati's Mexican Table*  
9:30 3-1 *New Orleans Cooking*  
10:00 3-1 *P. Allen Smith's Garden Home*  
10:30 3-1 *Jazzy Vegetarian*  
11:00 3-1 *Classical Stretch*  
11:30 3-1 *Sit and Be Fit*  
12:00 3-1 *Great British Baking Show*  
1:00 3-1 *Masterpiece "Unforgotten," Pt. 3*  
2:30 3-1 *On Story*  
3:00 3-1 *Roadtrip Nation*  
3:30 3-1 *Visionkeepers*  
4:00 3-1 *America's Heartland*  
4:30 3-1 *Daytripper*  
5:00 3-1 *Amanpour on PBS*  
5:30 3-1 *Nightly Business Report*  
6:00 3-1 *PBS NewsHour*  
7:00 3-2 **Antiques Roadshow** "Green Bay"  
3-1 *Speedy Delivery*  
8:00 3-2 **American Roadshow** "Charleston"  
3-1 *Antiques Roadshow*  
9:00 3-2 **Independent Lens** "Look & See:  
Wendell Berry's Kentucky"  
3-1 *Poetry in America*  
3-3 *Great British Baking Show*  
9:30 3-1 *Trust Docs*  
10:00 3-2 **Secrets of the Dead** "Hannibal in the  
Alps"  
3-1 *Amanpour on PBS*  
3-3 *Masterpiece "Unforgotten," Pt. 3*  
10:30 3-1 *Beyond 100 Days*  
11:00 3-2 **Antiques Roadshow** "Green Bay"  
3-1 *PBS NewsHour*  
11:30 3-3 *On Story*  
12:00 3-2 **PBS NewsHour**  
3-1 *Independent Lens "Look & See"*  
3-3 *Call the Midwife*

### Tuesday 24th

5:00 3-1 *Classical Stretch*  
5:30 3-1 *Wai Lana Yoga*  
6:00 3-1 *Antiques Roadshow*  
7:00 3-1 *Speedy Delivery*  
8:00 3-1 *4 Wheel Bob*  
9:00 3-1 *Healthy Body Healthy Mind*  
9:30 3-1 *Second Opinion*  
10:00 3-1 *Closer to Truth*  
10:30 3-1 *Healthy Minds*  
11:00 3-1 *Classical Stretch*  
11:30 3-1 *Wai Lana Yoga*  
12:00 3-1 *Food Over 50*  
12:30 3-1 *Taste of History*  
1:00 3-1 *Call the Midwife, Pt. 6*  
2:00 3-1 *Last Tango in Halifax, Pt. 3*  
3:00 3-1 *Antiques Roadshow*  
4:00 3-1 *Consuelo Mack WealthTrack*  
4:30 3-1 *Start Up*  
5:00 3-1 *Amanpour on PBS*  
5:30 3-1 *Nightly Business Report*  
6:00 3-1 *PBS NewsHour*  
7:00 3-2 **Civilizations** "How Do We Look?"  
3-1 *Colliding Dreams*  
8:00 3-2 **First Civilizations**, Pt. 1  
9:00 3-2 **You Should Know**  
3-1 *Power to Heal: Medicare and the  
Civil Rights Revolution*  
3-3 *Antiques Roadshow*  
9:30 3-2 **Creative Living**  
10:00 3-2 **Frontline** "Trafficked in America"  
3-1 *Amanpour on PBS*  
3-3 *History Detectives*  
10:30 3-1 *Beyond 100 Days*  
11:00 3-2 **Amanpour on PBS**  
3-1 *PBS NewsHour*  
3-3 *Globe Trekker*

11:30 3-2 **Beyond 100 Days**  
12:00 3-2 **PBS NewsHour**  
3-1 *Frontline "Trafficked in America"*  
3-3 *America's Heartland*

### Wednesday 25th

5:00 3-1 *Classical Stretch*  
5:30 3-1 *Wai Lana Yoga*  
6:00 3-1 *Consuelo Mack WealthTrack*  
6:30 3-1 *Growing Back*  
7:00 3-1 *Samantha Brown's Places to Love*  
7:30 3-1 *Crossing South*  
8:00 3-1 *Power to Heal: Medicare and the  
Civil Rights Revolution*  
9:00 3-1 *Craftsman's Legacy*  
9:30 3-1 *Rough Cut*  
10:00 3-1 *American Woodshop*  
10:30 3-1 *Woodwright's Shop*  
11:00 3-1 *Classical Stretch*  
11:30 3-1 *Sit and Be Fit*  
12:00 3-1 *Sara's Weeknight Meals*  
12:30 3-1 *Cook's Country*  
1:00 3-1 *Masterpiece "Downton Abbey 2," Pt. 1*  
3:00 3-1 *Music Voyager*  
3:30 3-1 *Travels with Darley*  
4:00 3-1 *Lidia's Kitchen*  
4:30 3-1 *America's Test Kitchen*  
5:00 3-1 *News 3 New Mexico*  
5:30 3-1 *Nightly Business Report*  
6:00 3-1 *PBS NewsHour*  
7:00 3-2 **Nature** "Natural Born Rebels"  
3-1 *Civilizations, Pt. 2*  
8:00 3-2 **Nova Wonders** "What are Animals  
Saying?"  
3-1 *First Civilizations, Pt. 1*  
9:00 3-2 **Nova** "Bird Brain"  
3-1 *Nature "Natural Born Rebels"*  
3-3 *Start Up*  
9:30 3-3 *Joanne Weir's Plates and Places*  
10:00 3-2 **Second Opinion** "Advances in  
Alzheimer's Disease"  
3-1 *Amanpour on PBS*  
3-3 *Masterpiece "Downton Abbey 2," Pt. 1*  
10:30 3-2 **This Old House**  
3-1 *Beyond 100 Days*  
11:00 3-2 **Amanpour on PBS**  
3-1 *PBS NewsHour*  
11:30 3-2 **Beyond 100 Days**  
12:00 3-2 **PBS NewsHour**  
3-1 *Nova Wonders*  
3-3 *Well Read*

### Thursday 26th

5:00 3-1 *Classical Stretch*  
5:30 3-1 *Wai Lana Yoga*  
6:00 3-1 *IQ: Smartparent*  
6:30 3-1 *Travels with Darley*  
7:00 3-1 *Civilizations, Pt. 2*  
8:00 3-1 *Antiques Roadshow*  
9:00 3-1 *Fons & Porter's Love of Quilting*  
9:30 3-1 *Quilt in a Day*  
10:00 3-1 *Knit and Crochet Now!*  
10:30 3-1 *It's Sew Easy*  
11:00 3-1 *Classical Stretch*  
11:30 3-1 *Wai Lana Yoga*  
12:00 3-1 *Christopher Kimball's Milk Street*  
12:30 3-1 *Chef's Life*  
1:00 3-1 *Ellie's Real Good Food*  
1:30 3-1 *Joanne Weir's Plates and Places*  
2:00 3-1 *Nova Wonders "What Are Animals  
Saying?"*  
3:00 3-1 *Science Goes to the Movies*  
3:30 3-1 *Museum Access*  
4:00 3-1 *Nova "Bird Brain"*  
5:00 3-1 *News 3 New Mexico*  
5:30 3-1 *Nightly Business Report*  
6:00 3-1 *PBS NewsHour*  
7:00 3-2 **Frontline** "Trafficked in America"  
3-1 *Song of the Mountains*



8:00	3-2	<b>Song of the Mountains</b> "Randall Hibbitts & Appalachia/The Bankesters" 3-1 <i>Red Green Show</i>	10:00	3-2	<b>P. Allen Smith's Garden Home</b> "Native Plants"	6:00	3-2	<b>Closer to Truth</b> "Is the Multiverse Real?" 3-1 <i>Great Performances at the Met "L'elisir d'amore"</i>
8:30	3-1	<b>Sportslook</b>	10:30	3-2	<b>Taste of History</b> "Cognac"	2:30	3-2	<b>Well Read</b> "Robert Moor, <i>On Trails</i> "
9:00	3-2	<b>Sportslook</b> 3-1 <i>Creative Living</i> 3-3 <i>Roadtrip Nation</i>	11:00	3-2	<b>Paint This with Jerry Yarnell</b> "Gray Wolf Ridge," Pt. 2 3-1 <i>BBQ with Franklin</i>	3:00	3-2	<b>Power to Heal: Medicare and the Civil Rights Revolution</b>
9:30	3-2	<b>Red Green Show</b> "Rites of Passage" 3-1 <i>You Should Know</i> 3-3 <i>New Environmentalists</i>	11:30	3-2	<b>Joy of Painting</b> "Mountain River" 3-1 <i>Ask This Old House</i>	4:00	3-2	<b>Classic Gospel</b> "TheHoppers" 3-1 <i>Nova "Bird Brain"</i>
10:00	3-2	<b>Front and Center</b> "Mike + The Mechanics" 3-1 <i>Amanpour on PBS</i> 3-3 <i>Nature</i>	12:00	3-2	<b>Beauty of Oil Painting</b> "Roses and Gold Leaf by Gary Jenkins" 3-1 <i>This Old House</i>	5:00	3-2	<b>PBS NewsHour Weekend</b> 3-1 <i>Well Read</i>
10:30	3-1	<i>Beyond 100 Days</i>	12:30	3-2	<b>Quilt in a Day</b> "Pink Lemonade" 3-1 <i>This Old House</i>	5:30	3-2	<b>Washington Week</b> 3-1 <i>Fall and Rise of Reginald Perrin</i>
11:00	3-2	<b>Amanpour on PBS</b> 3-1 <i>PBS NewsHour</i> 3-3 <i>Nova</i>	1:00	3-2	<b>Quilting Arts</b> "Freedom to Stitch" 3-1 <i>Ask This Old House</i>	6:00	3-2	<b>Live From Lincoln Center</b> "Leslie Odom Jr. In Concert" 3-1 <i>Call the Midwife</i>
11:30	3-2	<b>Beyond 100 Days</b>	1:30	3-2	<b>Fons &amp; Porter's Love of Quilting</b> "Quilted Scallop Pillow" 3-1 <i>Motorweek</i>	7:00	3-2	<b>Call the Midwife</b> , Pt. 7 3-1 <i>Masterpiece "Unforgotten 2" Pt. 1</i>
12:00	3-2	<b>PBS NewsHour</b> 3-1 <i>Masterpiece "Downton Abbey 2," Pt. 1</i> 3-3 <i>Closer to Truth</i>	2:00	3-2	<b>Creative Living</b> 3-1 <i>Woodwright's Shop</i>	8:00	3-2	<b>Masterpiece</b> "Unforgotten 2," Pt. 1

### Friday 27th

5:00	3-1	<i>Classical Stretch</i>
5:30	3-1	<i>Wai Lana Yoga</i>
6:00	3-1	<i>America's Heartland</i>
6:30	3-1	<i>Garden Smart</i>
7:00	3-1	<i>Song of the Mountains</i>
8:00	3-1	<i>Bluegrass Underground</i>
8:30	3-1	<i>Music Voyager</i>
9:00	3-1	<i>Globe Trekker</i>
10:00	3-1	<i>Joy of Painting</i>
10:30	3-1	<i>Beauty of Oil Painting</i>
11:00	3-1	<i>Classical Stretch</i>
11:30	3-1	<i>Sit and Be Fit</i>
12:00	3-1	<i>This Old House Hour</i>
1:00	3-1	<i>Make It Artsy</i>
1:30	3-1	<i>Welcome to My Studio</i>
2:00	3-1	<i>Growing Bolder</i>
2:30	3-1	<i>Two for the Road</i>
3:00	3-1	<i>Globe Trekker</i>
4:00	3-1	<i>American Health Journal</i>
4:30	3-1	<i>Great Decisions in Foreign Policy</i>
5:00	3-1	<i>News 3 New Mexico</i>
5:30	3-1	<i>Nightly Business Report</i>
6:00	3-1	<i>PBS NewsHour</i>
7:00	3-2	<b>Market to Market</b> 3-1 <i>Washington Week</i>
7:30	3-2	<b>Consuelo Mack WealthTrack</b> 3-1 <i>In Principle</i>
8:00	3-2	<b>Washington Week</b> 3-1 <i>Nova "Bird Brain"</i>
8:30	3-2	<b>In Principle</b> , Pt. 3
9:00	3-2	<b>Live From Lincoln Center</b> "Leslie Odom Jr. In Concert" 3-1 <i>Nova Wonders</i> 3-3 <i>This Old House Hour</i>
10:00	3-2	<b>Masterpiece</b> "Unforgotten," Pt. 3 3-1 <i>Frontline "Trafficked in America"</i> 3-3 <i>Woodwright's Shop</i>
10:30	3-3	<i>Craftsman's Legacy</i>
11:00	3-1	<i>PBS NewsHour</i> 3-3 <i>American Woodshop</i>
11:30	3-2	<b>Travelscope</b> 3-3 <i>Joy of Painting</i>
12:00	3-2	<b>PBS NewsHour</b> 3-1 <i>Live From Lincoln Center</i> 3-3 <i>Start Up</i>

### Saturday 28th

6:00	3-2	<b>Rough Cut</b>
6:30	3-2	<b>American Woodshop</b> "Custom Wood Keeps"
7:00	3-2	<b>Project Smoke</b> "The Big Smoke"
7:30	3-2	<b>America's Test Kitchen</b>
8:00	3-2	<b>Cook's Country</b> "Bourbon and Broccoli Hit the Grill"
8:30	3-2	<b>Great British Baking Show</b> "Victorian"
9:30	3-2	<b>Motorweek</b>

10:00	3-2	<b>P. Allen Smith's Garden Home</b> "Native Plants"
10:30	3-2	<b>Taste of History</b> "Cognac"
11:00	3-2	<b>Paint This with Jerry Yarnell</b> "Gray Wolf Ridge," Pt. 2 3-1 <i>BBQ with Franklin</i>
11:30	3-2	<b>Joy of Painting</b> "Mountain River" 3-1 <i>Ask This Old House</i>
12:00	3-2	<b>Beauty of Oil Painting</b> "Roses and Gold Leaf by Gary Jenkins" 3-1 <i>This Old House</i>
12:30	3-2	<b>Quilt in a Day</b> "Pink Lemonade" 3-1 <i>This Old House</i>
1:00	3-2	<b>Quilting Arts</b> "Freedom to Stitch" 3-1 <i>Ask This Old House</i>
1:30	3-2	<b>Fons &amp; Porter's Love of Quilting</b> "Quilted Scallop Pillow" 3-1 <i>Motorweek</i>
2:00	3-2	<b>Creative Living</b> 3-1 <i>Woodwright's Shop</i>
2:30	3-2	<b>Jazzy Vegetarian</b> "Be My Valentine" 3-1 <i>Chef's Life</i>
3:00	3-2	<b>Knit and Crochet Now!</b> "Downton Abby-Inspired Gloves" 3-1 <i>Martha Stewart's Cooking School</i>
3:30	3-2	<b>This Old House</b> "Charleston/Southern Roots" 3-1 <i>Martha Bakes</i>
4:00	3-2	<b>Ask This Old House</b> 3-1 <i>Globe Trekker</i>
4:30	3-2	<b>Welcome to My Studio</b> "A for Abstraction"
5:00	3-2	<b>Sewing with Nancy</b> "Sew Smart-A Three Season Jacket" 3-1 <i>PBS NewsHour Weekend</i>
5:30	3-2	<b>It's Sew Easy</b> "Cosplay" 3-1 <i>Report from Santa Fe</i>
6:00	3-2	<b>Report from Santa Fe</b> 3-1 <i>Antiques Roadshow</i>
6:30	3-2	<b>America's Heartland</b>
7:00	3-2	<b>Lawrence Welk Show</b> "Great Entertainers (1981)" 3-1 <i>Live From Lincoln Center</i>
8:00	3-2	<b>Fall and Rise of Reginald Perrin</b> 3-1 <i>International Jazz Day from Cuba</i>
8:30	3-2	<b>Red Green Show</b> "Rites of Passage"
9:00	3-2	<b>Austin City Limits</b> "TV on the Radio/The War on Drugs" 3-1 <i>Soundstage</i> 3-3 <i>Lawrence Welk Show</i>
10:00	3-2	<b>Nova Wonders</b> "What are Animals Saying?" 3-1 <i>Austin City Limits</i> 3-3 <i>Classic Gospel</i>
11:00	3-2	<b>Nature</b> "Natural Born Rebels: Hunger Wars" 3-1 <i>Nova "Bird Brain"</i> 3-3 <i>Bluegrass Underground</i>
11:30	3-3	<i>Sun Studio Sessions</i>
12:00	3-2	<b>Austin City Limits</b> 3-1 <i>Nature</i> 3-3 <i>Backstage Pass</i>

### Sunday 29th

6:00	3-2	<b>Samantha Brown's Places to Love</b> "Montreal, Canada"
6:30	3-2	<b>Second Opinion</b> "Mystery Diagnosis"
7:00	3-2	<b>Antiques Roadshow</b> "Charleston"
8:00	3-2	<b>Classic Gospel</b> "Best of the Martins"
9:00	3-2	<b>Joy of Music</b> "Switzerland"
9:30	3-2	<b>Music and the Spoken Word</b>
10:00	3-2	<b>Civilizations</b> "How Do We Look?"
11:00	3-2	<b>Globe Trekker</b> "Myanmar" 3-1 <i>Washington Week</i>
11:30	3-1	<i>To the Contrary with Bonnie Erbe</i>
12:00	3-1	<i>Poetry in America</i>
12:30	3-2	<b>New Mexico In Focus</b> 3-1 <i>Start Up</i> 1:00 3-1 <i>Scully/The World Show</i>
1:30	3-2	<b>Travel Detective</b> "Global Unrest Impacting Travel" 3-1 <i>Market to Market</i>

2:00	3-2	<b>Closer to Truth</b> "Is the Multiverse Real?" 3-1 <i>Great Performances at the Met "L'elisir d'amore"</i>
2:30	3-2	<b>Well Read</b> "Robert Moor, <i>On Trails</i> "
3:00	3-2	<b>Power to Heal: Medicare and the Civil Rights Revolution</b>
4:00	3-2	<b>Classic Gospel</b> "TheHoppers" 3-1 <i>Nova "Bird Brain"</i>
5:00	3-2	<b>PBS NewsHour Weekend</b> 3-1 <i>Well Read</i>
5:30	3-2	<b>Washington Week</b> 3-1 <i>Fall and Rise of Reginald Perrin</i>
6:00	3-2	<b>Live From Lincoln Center</b> "Leslie Odom Jr. In Concert" 3-1 <i>Call the Midwife</i>
7:00	3-2	<b>Call the Midwife</b> , Pt. 7 3-1 <i>Masterpiece "Unforgotten 2" Pt. 1</i>
8:00	3-2	<b>Masterpiece</b> "Unforgotten 2," Pt. 1
8:30	3-1	<i>On Story</i>
9:00	3-1	<i>Independent Lens "Look &amp; See: Wendell Berry's Kentucky"</i> 3-3 <i>Daytripper</i>
9:30	3-2	<b>Civilizations</b> "How Do We Look?" 3-3 <i>America's Heartland</i>
10:00	3-1	<i>Arts in Context</i> 3-3 <i>This Old House</i>
10:30	3-2	<b>First Civilizations</b> , Pt. 1 3-1 <i>Live at the Charleston Music Hall</i> 3-3 <i>Ask This Old House</i>
11:00	3-1	<i>Austin City Limits</i> 3-3 <i>Motorweek</i>
11:30	3-2	<b>Dream of Italy</b> "Abruzzo" 3-3 <i>Woodwright's Shop</i>
12:00	3-2	<b>Nova Wonders</b> "What Are Animals Saying?" 3-1 <i>Masterpiece "Unforgotten 2" Pt. 1</i> 3-3 <i>Nature</i>

### Monday 30th

5:00	3-1	<i>Classical Stretch</i>
5:30	3-1	<i>Wai Lana Yoga</i>
6:00	3-1	<i>Nature "Natural Born Rebels"</i>
7:00	3-1	<i>In the Americas with David Yetman</i>
7:30	3-1	<i>Travelscope</i>
8:00	3-1	<i>Rick Steves' Europe</i>
8:30	3-1	<i>My Greek Table</i>
9:00	3-1	<i>Pati's Mexican Table</i>
9:30	3-1	<i>New Orleans Cooking</i>
10:00	3-1	<i>P. Allen Smith's Garden Home</i>
10:30	3-1	<i>Jazzy Vegetarian</i>
11:00	3-1	<i>Classical Stretch</i>
11:30	3-1	<i>Sit and Be Fit</i>
12:00	3-1	<i>Great British Baking Show</i>
1:00	3-1	<i>Masterpiece "Unforgotten 2" Pt. 1</i>
2:30	3-1	<i>On Story</i>
3:00	3-1	<i>Roadtrip Nation</i>
3:30	3-1	<i>Visionkeepers</i>
4:00	3-1	<i>America's Heartland</i>
4:30	3-1	<i>Daytripper</i>
5:00	3-1	<i>Amanpour on PBS</i>
5:30	3-1	<i>Nightly Business Report</i>
6:00	3-1	<i>PBS NewsHour</i>
7:00	3-2	<b>Antiques Roadshow</b> "Green Bay" 3-1 <i>World of Ice Dance International</i>
8:00	3-2	<b>Antiques Roadshow</b> "Charleston" 3-1 <i>Antiques Roadshow</i>
9:00	3-2	<b>Independent Lens</b> "True Conviction" 3-1 <i>Poetry in America</i> 3-3 <i>Great British Baking Show</i>
9:30	3-1	<i>Trust Docs</i>
10:00	3-1	<i>Amanpour on PBS</i> 3-3 <i>Masterpiece "Unforgotten 2," Pt. 1</i>
10:30	3-2	<b>Burt Wolf: Travels &amp; Traditions</b> "The Beach Vacation," Pt. 1 3-1 <i>Beyond 100 Days</i>
11:00	3-2	<b>Antiques Roadshow</b> "Green Bay" 3-1 <i>PBS NewsHour</i> 3-3 <i>On Story</i>
12:00	3-2	<b>PBS NewsHour</b> 3-1 <i>Independent Lens</i> 3-3 <i>Call the Midwife</i>

# u KENW/KMTH-FM LOG u

**KENW-FM, Portales, NM, 89.5 MHz — KMTH-FM, Maljamar, NM, 98.7 MHz — KENM-FM, Tucumcari, NM, 88.9 MHz — KENU-FM, Des Moines, NM, 88.5 MHz — KENG-FM, Ruidoso, NM, 88.5 MHz — KENE-FM, Raton, NM, 88.1 MHz**

**Translators:** Apache Springs, 90.9 MHz; Clayton, 93.5 MHz; Des Moines, 106.1 MHz; Ft. Sumner, 91.7 MHz; Las Vegas, 88.1 MHz; Roswell, 91.1 MHz; Wagon Mound, 92.1 MHz.

## Sundays

### 8:00 a.m. WITH HEART AND VOICE

- Apr 1 An Easter Celebration
- Apr 8 Easter II
- Apr 15 Spring has Sprung
- Apr 22 Randall Thompson
- Apr 29 New and Recent Releases

### 9:00 a.m. FOOTLIGHT PARADE

- Apr 1 Many Ways to Say 'I Love You'
- Apr 8 Blowing the House Down
- Apr 15 Spotlight on Yip Harburg
- Apr 22 1961 on State and Screen
- Apr 29 Spotlight on *Carousel*

### 10:00 a.m. RADIO LAB

- Apr 1 Games
- Apr 8 Breaking News
- Apr 15 Afterlife
- Apr 22 Stress
- Apr 29 Colors

### 11:00 a.m. FRESH AIR WEEKEND

### 12:00 p.m. PEOPLE'S PHARMACY

### 1:00 p.m. THIS AMERICAN LIFE

### 2:00 p.m. THE FOLK SAMPLER

- Apr 1 April Showers Bring May Flowers
- Apr 8 Time To Garden
- Apr 15 Friends
- Apr 22 Listen To Me
- Apr 29 Brothers And Sisters

### 3:00 p.m. MOUNTAIN STAGE

- Apr 1 Bettye LaVette; Joan Osborne; Nick Moss Band; and More
- Apr 8 Chris Stapleton; Alison Krauss & Union Station; Robert Cray Band; Jason Isbell; Iron & Wine and more
- Apr 15 Special Guest-Host Kathy Mattea; Seamus Egan Project; Cheryl Wheeler; The Mulligan Brothers; Kenny White; Sam Baker
- Apr 22 Tal National; Ranky Tanky; Calan; Amy Rigby
- Apr 29 Lee Ann Womak; James McMurry; Inara George; The Low Anthem; John Moreland

### 5:00 p.m. CELTIC CONNECTIONS

- Apr 1 Revisiting 2016
- Apr 8 TBA
- Apr 15 TBA
- Apr 22 TBA
- Apr 29 TBA

### 6:00 p.m. ALL THINGS CONSIDERED

### 7:00 p.m. SANTA FE CHAMBER MUSIC FESTIVAL

- Apr 1 HANDEL: "Voi che udite il lament" from *Agrippina*
- VIVALDI: Oboe Concerto in C
- MENDELSSOHN: Piano Trio No. 1 in d
- Apr 8 DVORAK: Terzetto in C
- BRAHMS: Piano Trio No. 2 in C
- Apr 15 BRIDGE: Three Songs for Medium Voice, Viola & Piano
- BEETHOVEN: String Quartet No. 14 in c-sharp

- Apr 22 PAGANINI: Sonata in A, No. 1; Sonata in e, No. 6
- CARTER: Quintet for Piano & Strings
- SCHUMANN: Piano Quartet in E-Flat

- Apr 29 WEILL: Concerto for Violin & Wind Orchestra
- VERDI: String Quartet in e

### 7:00 p.m. LIVE FROM THE GRAND TETON MUSIC FESTIVAL

- Apr 1 VAUGHAN-WILLIAMS: *Fantasia on a Theme by Thomas Tallis*
- KERNIS: *For Love of the Mountains*
- STRAVINSKY: *Firebird Suite*
- Apr 8 HIGDON: *All Things Majestic*
- KERNIS: *Musica Celestis*
- GERSHWIN: *Rhapsody in Blue*
- Apr 15 HOLST: *The Planets*
- Apr 22 BRITTEN: Four Sea Interludes from *Peter Grimes*
- VAUGHAN-WILLIAMS: Symphony No. 3 "Pastoral"

- Apr 29 MAHLER: Symphony No. 1 in D; Symphony No. 5 in c-sharp; Symphony No. 6 in a; Symphony No. 9

### 9:00 p.m. THE ROMANTIC HOUR

- Apr 1 Variety of Listener Submissions
- Apr 8 April Verse
- Apr 15 Sayings of Christian Mystics – Part 1
- Apr 22 A Celebration of Spring
- Apr 29 Sayings of Christian Mystics – Part 2

### 10:00 p.m. WEEKEND PERFORMANCE TODAY

- 11:00 p.m. MUSIC OUT OF THE NIGHT AND INTO THE MORNING until 5:00 a.m. when **Morning Edition** begins.

## Mondays

### 7:00 p.m. CHICAGO SYMPHONY ORCHESTRA

- Apr 2 MAHLER: Symphony No. 7
- HAYDN: Sinfonia Concertante in B-Flat
- Apr 9 ROSSINI: Overture to *William Tell*
- OGONEK: *All These Lighted Things*
- BRUCKNER: Symphony No. 4 in E-Flat
- RAVEL: *Bolero*
- Apr 16 Riccardo Mutti conducts Italian Opera Masterworks
- Apr 23 GRIEG: Suite No. 1 from *Peer Gynt*
- MENDELSSOHN: Violin Concerto in e
- SIBELIUS: Symphony No. 1 in e
- PROKOFIEV: Suite from *Lieutenant Kije*

- Apr 30 DEBUSSY: *Syrinx*
- RAVEL: Piano Concerto in G
- MESSIAEN: *Turangalila-symphonie*

### 9:00 p.m. PERFORMANCE TODAY

- 11:00 p.m. MUSIC OUT OF THE NIGHT AND INTO THE MORNING until 5:00 a.m. when **Morning Edition** begins.

## Tuesdays

### 7:00 p.m. NEW YORK PHILHARMONIC

- Apr 3 ELGAR: Cockaigne Overture
- VAUGHAN-WILLIAMS: *Fantasia on a Theme by Thomas Tallis*
- BRITTEN: *Excerpts from the War Requiem*
- HOLST: The Planets
- Apr 10 Music Director Profiles #1: Pierre Boulez
- Apr 17 BEETHOVEN: Leonore Overture No. 3
- WAGNER: Immolation Scene from *Götterdämmerung*
- MASCAGNI: Cherry Duet from *L'Amico Fritz*
- BARTOK: *Bluebeard's Castle*
- Apr 24 DVORAK: Symphony No. 9
- COPLAND: Connotations for Orchestra
- CORIGLIANO: Clarinet Concerto
- CARTER: A Symphony of Three Orchestras

### 9:00 p.m. PERFORMANCE TODAY

- 11:00 p.m. MUSIC OUT OF THE NIGHT AND INTO THE MORNING until 5:00 a.m. when **Morning Edition** begins.

## Wednesdays

### 7:00 p.m. DEUTSCHE WELLE FESTIVAL CONCERTS

- Apr 4 J.C. BACH: Symphony in g
- LEOPOLD MOZART: Serenade in D for Trumpet, Trombone & Orchestra
- MOZART: Symphony No. 25 in g
- BACH: Symphony in D
- HAYDN: Symphony No. 100 in G; Symphony No. 104 in D
- Apr 11 J.S. BACH: Toccata in F for Organ; Wir Glauben all an Einen Gott; Ein Feste Burg ist Unser Gott
- MENDELSSOHN: Symphony No. 2 in B-Flat
- Apr 18 DVORAK: Three Slavonic Dances: No. 3 in F, No. 5 in b-flat, No. 7 in C; Violin Concerto in a
- BARTOK: Concerto for Orchestra
- Apr 25 Romanesque Night
- 9:00 p.m. PERFORMANCE TODAY
- 11:00 p.m. MUSIC OUT OF THE NIGHT AND INTO THE MORNING until 5:00 a.m. when **Morning Edition** begins.



**Thursdays**

7:00 p.m. **COLLECTORS' CORNER** with **HENRY FOGEL**  
 Apr 5 Music by Moritz Moszkowski  
 Apr 12 Toscanini's Favorite Tenor at La Scala: Aureliano Pertile  
 Apr 19 Music by Walter Piston – Program 1  
 Apr 26 Music by Walter Piston – Program 2  
 9:00 p.m. **PERFORMANCE TODAY**  
 11:00 p.m. **MUSIC OUT OF THE NIGHT AND INTO THE MORNING** until 5:00 a.m. when **Morning Edition** begins.

**Fridays**

7:00 p.m. **CONCIERTO**  
 8:00 p.m. **FIESTA! With ELBIO BARILARI**  
 Apr 6 Impressions of Nature  
 Apr 13 Colonial Music from Peru and Brazil  
 Apr 20 La Guitarra  
 Apr 27 Portuguese Powerhouse  
 9:00 p.m. **PERFORMANCE TODAY**  
 11:00 p.m. **MUSIC OUT OF THE NIGHT AND INTO THE MORNING** until 5:00 a.m. when **People's Pharmacy** begins.

**Saturdays**

8:00 a.m. **BEST OF CAR TALK**  
 9:00 a.m. **WAIT WAIT DON'T TELL ME**  
 10:00 a.m. **THE BIONEERS: Revolution from the Heart of Nature**  
 10:30 a.m. **NEW LETTERS ON THE AIR**  
 11:00 a.m. **THE METROPOLITAN OPERA**  
 Apr 7 **DONIZETTI: Lucia Di Lammermoor**  
 Apr 14 **VERDI: Luisa Miller**  
 Apr 21 **ADES: The Exterminating Angel**  
 Apr 28 **MASSENET: Cendrillon**  
 3:00 p.m. **CLASSICAL GUITAR ALIVE!**  
 4:00 p.m. **LIVE FROM HERE WITH CHRIS THILE**  
 Apr 7 Live from Minneapolis, MN  
 Apr 14 Live from New York, NY  
 Apr 21 Live from New York, NY  
 Apr 28 Live from New York, NY  
 6:00 p.m. **ALL THINGS CONSIDERED**

7:00 p.m. **MARIAN McPARTLAND's PIANO JAZZ**  
 Apr 7 Nicholas Payton, Trumpeter  
 Apr 14 Cleo Brown, Pianist and Vocalist  
 Apr 21 Willie Pickens, Pianist  
 Apr 28 Eliane Elias, Brazilian Pianist, Composer, and Vocalist  
 8:00 p.m. **SWINGIN' DOWN THE LANE**  
 Apr 7 Listen Up – Songs related to the auditory nerve  
 Apr 14 Down Beat  
 Apr 21 Top Movie Songs 1  
 Apr 28 Yip Harburg  
 9:00 p.m. **JAZZ PROFILES**  
 Apr 7 Jazz in Song: The Singing Instrumentalists  
 Apr 14 Jazz in Song, The Jazz Standard  
 Apr 21 Etta Jones: "The Best Kept Secret in Jazz"  
 Apr 28 Oscar Pettiford: Bass Beyond Bop  
 10:00 p.m. **DREAMFARM RADIO**  
 11:00 p.m. **JAZZ NIGHT**  
 12:00 a.m. **MUSIC OUT OF THE NIGHT AND INTO THE MORNING** until 6:00 a.m. when **Weekend Edition** begins.



**FM Radio Week-at-a-Glance**

	Sunday	Monday	Tuesday	Wednesday	Thursday	Friday	Saturday	Monday through Friday
5:00							5:00 a.m. People's Pharmacy	Regional News: 5:31, 6:31, and 7:31 a.m. Weather: 5:18, 6:18, and 7:18 a.m.
6:00	Weekend Edition	Morning Edition	Morning Edition	Morning Edition	Morning Edition	Morning Edition	6:00 a.m. Weekend Edition	8:01 Marketplace Report 8:09 SnoCountry Ski Report 8:15 Current Cast 8:20 Nature Notes (Tu) Travelers in the Night (W)
7:00							8:00 a.m. Car Talk	8:30 Health in a Heartbeat 8:45 Insight 9:00 Weather/News 9:05 Dateline New Mexico 9:15 Marketplace Tech Report 9:20 A Southwest Spotlight (F) 9:30 Disability Awareness 9:45 Fitness Minute
8:00	With Heart and Voice						9:00 a.m. Wait, Wait... Don't Tell Me	10:00 Weather/News/Regional News 10:15 Engines of Our Ingenuity 10:30 Composers' Datebook 10:45 News Feature 11:00 Weather/News 11:15 Melinda's Garden Moment 11:30 Pulse of the Planet 11:45 Climate Connections 12:00 Weather/News/Regional News 12:15 Community Calendar 12:30 Moment in Time / Ski Report 12:35 Great Arts @ Eastern (Th) 12:45 People's Pharmacy News (M) Poetry Now (T) A Touch on Nature (W) Medical Discoveries News (Th) Science and the Sea (F)
9:00	Footlight Parade	Music	Music	Music	Music	Music	10:00 a.m. Bioneers	1:00 Weather/News 1:15 Sound Beat 1:30 Loh Down on Science 1:45 StarDate 2:00 Weather/News/Regional News 2:15 Bird Note 2:20 A Southwest Spotlight (W) 2:30 American Storyteller 2:45 90 Second Naturalist 3:00 Weather/News 3:06 Innovation Now/Fitness Minute 3:15 The Plant Detective 3:25 Dateline New Mexico 3:29 SnoCountry Ski Report 4:50 & 5:50 p.m. Weather 5:20 New Mexico Close-up 5:30 Regional News 6:57 StarDate/Weather 9:00 Weather/News 12:00/3:00 a.m. Weather/News
10:00	Radiolab	News	News	News	News	News	10:30 a.m. New Letters	
11:00	Fresh Air Weekend with Terry Gross	&	&	&	&	&	11:00 a.m. The Metropolitan Opera	
12:00	People's Pharmacy (R)	Features	Features	Features	Features	Features	Classical Music	
1:00	This American Life						3:00 p.m. Classical Guitar	
2:00	The Folk Sampler						4:00 p.m. Live from Here	
3:00		Here & There with David Marash						
3:30			Best of Knowledge	51 Percent	With Good Reason	Says You!		
4:00	Mountain Stage	Marketplace	Marketplace	Marketplace	Marketplace	Marketplace		
4:30								
5:00	Celtic Connections	All Things Considered	All Things Considered	All Things Considered	All Things Considered	All Things Considered		
6:00	All Things Considered	PBS NewsHour	PBS NewsHour	PBS NewsHour	PBS NewsHour	PBS NewsHour		
7:00	Santa Fe Chamber	Chicago Symphony Orchestra	New York Philharmonic	Deutsche Welle Festival Concerts	Collectors' Corner	Concierto with Frank Dominguez	Marian McPartland	
8:00	Live from the Grand Teton Music Festival					Fiesta! with Elbio Barilari	Swingin' Down the Lane	
9:00	The Romantic Hours	Performance Today	Performance Today	Performance Today	Performance Today	Performance Today	Jazz Profiles	
10:00	Performance Today						DreamFarm Radio	
11:00	Classical Music Out of the Night until 5:00 a.m.	Classical Music Out of the Night until 5:00 a.m.	Classical Music Out of the Night until 5:00 a.m.	Classical Music Out of the Night until 5:00 a.m.	Classical Music Out of the Night until 5:00 a.m.	Classical Music Out of the Night until 5:00 a.m. when People's Pharmacy begins.	Jazz Night in America	
							Classical Music Out of the Night until 6:00 a.m.	



# BUSINESS FRIENDS

 <p><b>Taylor Water Well Service</b> Water Well Drilling Pump Sales &amp; Service</p> <p>Carlsbad, NM Live from Here, FM Wait, Wait...Don't Tell Me, FM Radio Lab, FM</p>	 <p><b>This space could be yours!</b></p> <p>For Underwriting opportunities, please call toll-free (888) 367-5369. Ask for Rena for TV, Amie for FM</p>	 <p><b>Featherstone Development Corporation</b></p> <p>Roswell, NM Nature, Nightly Business Report, Star Gazers</p>	 <p><b>CJ's Pharmacy</b>... At your Service</p> <p>Portales, NM Fitness Minute, Classical Guitar Alive, FM Mt. Stage, FM</p>	 <p><b>This space could be yours!</b></p> <p>For Underwriting opportunities, please call toll-free (888) 367-5369. Ask for Rena for TV, Amie for FM</p>	 <p><b>The NEWS</b></p> <p>Clovis, Portales, NM Austin City Limits</p>
 <p><b>YUCCA</b></p> <p>Portales, NM Nova</p>	 <p><b>Clovis Community College</b> Cultural Art Series Primetime Programming, TV</p>	 <p><b>Roswell, NM</b> Classic Gospel</p>	 <p><b>James Polk Stone Community Bank</b></p> <p>Clovis, Eunice, Hagerman, Hobbs, Portales, Roswell Austin City Limits</p>	 <p><b>PLATEAU</b></p> <p>Evening News/Public Affairs BBC World News News 3 New Mexico</p>	 <p><b>Featherstone Development Corporation</b></p> <p>Roswell, NM Morning Edition, FM Jazz Programming, FM</p>
 <p><b>New Mexico Humanities Council</b></p> <p>Albuquerque, NM (505) 277-3217 www.nmhum.org Morning Edition, FM Weekend Edition, FM</p>	 <p><b>Names and Numbers</b> Telephone Book</p> <p>Evening News/Public Affairs Programming News 3 New Mexico</p>	 <p><b>EASTERN NEW MEXICO UNIVERSITY</b></p> <p>Portales, NM Austin City Limits</p>	 <p><b>FEC</b> A Touchstone Energy Cooperative Farmers' Electric Cooperative, Inc. of New Mexico Clovis, NM Ask This Old House</p>	 <p><b>This space could be yours!</b></p> <p>For Underwriting opportunities, please call toll-free (888) 367-5369. Ask for Rena for TV, Amie for FM</p>	 <p><b>Roswell Jazz Festival</b></p> <p>Roswell, NM Piano Jazz, FM Jazz Programming, FM</p>
 <p><b>The Box</b></p> <p>Clovis and Portales Wait, Wait...Don't Tell Me, FM</p>	 <p><b>High Country Agency, Inc.</b></p> <p>Ruidoso, NM Morning Edition, FM</p>	 <p><b>SECURITY STATE BANK</b></p> <p>Farwell, TX Antiques Roadshow</p>	 <p><b>Living Desert Zoo &amp; Gardens State Park</b> Open Every Day Except Christmas Carlsbad, NM Austin City Limits, Nature, PBS NewsHour</p>	 <p><b>CJ's Pharmacy</b>... At your Service</p> <p>Portales, NM Antiques Roadshow, Health related programs, Report from Santa Fe, Sportslook</p>	 <p><b>Permian Ford-Lincoln-Mercury, Inc.</b></p> <p>Hobbs, NM Weekend ATC, FM All Things Considered, FM Car Talk, FM</p>
 <p><b>Paul and Elise Schmidt</b></p> <p>PBS NewsHour Washington Week</p>	 <p><b>VALLEY MOWER CLINIC, INC</b> Clovis, NM</p> <p>P. Allen Smith's Garden to Table</p>	 <p><b>The Ruidoso Physical Therapy Clinic</b></p> <p>Ruidoso, NM Weekend Edition, FM People's Pharmacy, FM</p>	 <p><b>Atwood, Malone, Turner &amp; Sabin</b> Attorneys at Law Roswell, NM Evening Symphony, FM All Things Considered, FM</p>	 <p><b>Penasco Valley Telecommunications</b></p> <p>With Good Reason, Car Talk, Mountain Stage FM</p>	 <p><b>Hawyer Operating Company</b></p> <p>Roswell, NM American Experience, Masterpiece, Nova, PBS NewsHour</p>
 <p><b>This space could be yours!</b></p> <p>For Underwriting opportunities, please call toll-free (888) 367-5369. Ask for Rena for TV, Amie for FM</p>	 <p><b>NMDA</b> New Mexico Department of Agriculture</p> <p>Las Cruces, NM America's Heartland</p>	 <p><b>This space could be yours!</b></p> <p>For Underwriting opportunities, please call toll-free (888) 367-5369. Ask for Rena for TV, Amie for FM</p>	 <p><b>Roosevelt County Electric Cooperative</b></p> <p>Portales, NM Antiques Roadshow</p>	 <p><b>This space could be yours!</b></p> <p>For Underwriting opportunities, please call toll-free (888) 367-5369. Ask for Rena for TV, Amie for FM</p>	 <p><b>CHAVES COUNTY FARM AND LIVESTOCK BUREAU</b></p> <p>Dexter and Roswell, NM America's Heartland</p>

## When to watch from *A to Z* Channel 3-1 – April 2018

**Amanpour On PBS** – Mondays-Tuesdays, 5:00 p.m.;  
Mondays-Fridays, 10:00 p.m. (except 20th, 27th)

**American Health Journal** – Fridays, 4:00 p.m.

**American Woodshop** – Wednesdays, 10:00 a.m.

**America's Heartland** – Mondays, 4:00 p.m.; Fridays, 6:00 a.m.

**America's Test Kitchen** – Wednesdays, 4:30 p.m.

**Antiques Roadshow** – Mondays, 8:00 p.m.;  
Tuesdays, 6:00 a.m./3:00 p.m.; Thursdays, 8:00 a.m.;  
Saturdays, 6:00 p.m.

**Arts in Context** – Sundays, 10:00 p.m. (except 8th, 22nd)

**Ask This Old House** – Saturdays, 11:30 a.m./1:00 p.m.

**Austin City Limits** – Saturdays, 10:00 p.m.; Sundays, 11:00 p.m.

**BBC World News On PBS** – Fridays, 10:30 p.m. (except 20th, 27th)

**BBQ with Franklin** – Saturdays, 11:00 a.m.

**Beauty of Oil Painting** – Fridays, 10:30 a.m.

**Beyond 100 Days** – Mondays-Thursdays, 10:30 p.m.

**Bluegrass Underground** – Fridays, 8:00 a.m.

**Call The Midwife, Season 7** – Sundays, 6:00 p.m.; Tuesdays, 1:00 p.m.

**Chef's Life** – Saturdays, 2:30 p.m.; Thursdays, 12:30 p.m.

**Christopher Kimball's Milk Street TV** – Thursdays, 12:00 noon

**Classical Stretch** – Mondays-Fridays, 5:00 a.m./11:00 a.m.

**Closer to Truth** – Tuesdays, 10:00 a.m.

**Consuelo Mack Wealthtrack** – Tuesdays, 4:00 p.m.;  
Wednesdays, 6:00 a.m.

**Cook's Country** – Wednesdays, 12:30 p.m.

**Craftsman's Legacy** – Wednesdays, 9:00 a.m.

**Creative Living** – Thursdays, 9:00 p.m.

**Crossing South** – Wednesdays, 7:30 a.m.

**Daytripper** – Mondays, 4:30 p.m.

**Ellie's Real Good Food** – Thursdays, 1:00 p.m.

**Fall and Rise of Reginald Perrin** – Sundays, 5:30 p.m.

**Fons & Porter's Love of Quilting** – Thursdays, 9:00 a.m.

**Food Over 50** – Tuesdays, 12:00 noon

**Frontline** –  
"Trump's Takeover" – Friday, 13th, 9:00 p.m.  
"McCain" – Friday, 20th, 10:00 p.m.  
"Trafficked in America" – Friday, 27th, 10:00 p.m.

**Garden Smart** – Fridays, 6:30 a.m.

**Globe Trekker** – Fridays, 9:00 a.m./3:00 p.m.; Saturdays, 4:00 p.m.

**Great British Baking Show** – Sundays, 3:00 p.m. (except 29th);  
Mondays, 12:00 noon

**Great Decisions in Foreign Policy** – Fridays, 4:30 p.m.

**Growing Bolder** – Wednesdays, 6:30 a.m.; Fridays, 2:00 p.m.

**Healthy Body Healthy Mind** – Tuesdays, 9:00 a.m.

**Healthy Minds** – Tuesdays, 10:30 a.m.

**In The Americas with David Yetman** – Mondays, 7:00 a.m.

**IQ: Smartparent** – Thursdays, 6:00 a.m.

**It's Sew Easy** – Thursdays, 10:30 a.m.

**Jazzy Vegetarian** – Mondays, 10:30 a.m.

**Joanne Weir's Plates and Places** – Thursdays, 1:30 p.m.

**Joy of Painting** – Fridays, 10:00 a.m.

**Knit and Crochet Now** – Thursdays, 10:00 a.m.

**Lidia's Kitchen** – Wednesdays, 4:00 p.m.

**Live at the Charleston Music Hall** – Sundays, 10:30 p.m.

**Make It Artsy** – Fridays, 1:00 p.m.

**Makers** – Tuesdays, 8:00 a.m. (ends 10th)

**Market to Market** – Sundays, 1:30 p.m.

**Martha Bakes** – Saturdays, 3:30 p.m.



## Channel 3-1 Continued

**Martha Stewart's Cooking School** – Saturdays, 3:00 p.m.  
**Masterpiece** –  
    “**Child in Time**” – Sunday, 1st, 7:00 p.m.; Monday, 2nd, 1:00 p.m.  
    “**Unforgotten**” – Sundays, 7:00 p.m. (begins 8th);  
        Mondays, 1:00 p.m. (begins 9th)  
    “**Downton Abbey**” – Wednesdays, 1:00 p.m.  
    #**MeToo, Now What?** – Friday, 6th, 7:30 p.m. (end)  
**Motorweek** – Saturdays, 1:30 p.m.  
**Museum Access** – Thursdays, 3:30 p.m. (except 19th)  
**Music Voyager** – Wednesdays, 3:00 p.m.; Fridays, 8:30 a.m.  
**My Greek Table** – Mondays, 08:30 a.m.  
**Nature** – Wednesdays, 9:00 p.m. (except 18th); Mondays, 6:00 a.m.  
**New Orleans Cooking** – Mondays, 9:30 a.m.  
**News 3 New Mexico** – Wednesdays – Fridays, 5:00 p.m.  
**Nightly Business Report** – Monday-Friday, 5:30 p.m.  
**Nova** – Thursdays, 4:00 p.m. (except 5th; 3:00 p.m. on 19th);  
    Fridays, 8:00 p.m. (except 6th);  
    Sundays, 4:00 p.m. (except 22nd; 4:30 p.m. on 29th)  
**Nova Wonders** – Thursdays, 2:00 p.m. (begins 26th);  
    Fridays, 9:00 p.m. (begins 27th)  
**On Story** – Sundays, 8:30 p.m. (begins 8th);  
    Mondays, 2:30 p.m. (begins 9th)  
**P. Allen Smith's Garden Home** – Sundays, 2:00 p.m. (except 29th);  
    Mondays, 10:00 a.m.  
**Pati's Mexican Table** – Mondays, 9:00 a.m.  
**PBS Newshour** – Mondays – Fridays, 6:00 p.m./11:00 p.m.  
**PBS Newshour Weekend** – Saturdays, 5:00 p.m.  
**Poetry in America** – Mondays, 9:00 p.m. (begins 9th);  
    Sundays, 12:00 noon (begins 15th)  
**Quilt in A Day** – Thursdays, 9:30 a.m.  
**Red Green Show** – Thursdays, 8:00 p.m.  
**Report from Santa Fe** – Saturdays, 5:30 p.m.  
**Rick Steves' Europe** – Mondays, 8:00 a.m.  
**Roadtrip Nation** – Mondays, 3:00 p.m.  
**Rough Cut** – Wednesdays, 9:30 a.m.  
**Samantha Brown's Places to Love** – Wednesdays, 7:00 a.m.  
**Sara's Weeknight Meals** – Wednesdays, 12:00 noon  
**Science Goes to The Movies** – Thursdays, 3:00 p.m. (except 19th)  
**Scully/The World Show** – Sundays, 1:00 p.m.  
**Second Opinion** – Tuesdays, 9:30 a.m.  
**Sit and Be Fit** – Mondays/Wednesdays/Fridays, 11:30 a.m.  
**Song of the Mountains** – Thursdays, 7:00 p.m. (except 19th);  
    Fridays, 7:00 a.m.  
**Soundstage** – Saturdays, 9:00 p.m. (begins 14th)  
**Sportslook** – Thursdays, 8:30 p.m.  
**Start Up** – Tuesdays, 4:30 p.m.; Sundays, 12:30 p.m. (except 1st)  
**Taste of History** – Tuesdays, 12:30 p.m.  
**This American Land** – Monday, 2nd, 3:30 p.m.  
**This Old House** – Saturdays, 12:00 noon/12:30 p.m.  
**This Old House Hour** – Fridays, 12:00 noon  
**Today's Wild West** – Sunday, 8th, 12:00 noon  
**To The Contrary** – Sundays, 11:30 a.m.  
**Travelscope** – Mondays, 7:30 a.m. (begins 9th)  
**Travels with Darley** – Wednesdays, 3:30 p.m.; Thursdays, 6:30 a.m.  
**Trust Docs** – Mondays, 9:30 p.m.  
**Two for The Road** – Fridays, 2:30 p.m.  
**Visionkeeper** – Mondays, 3:30 p.m. (begins 9th)  
**Wai Lana Yoga** – Mondays – Fridays, 5:30 a.m.;  
    Tuesdays/Thursdays, 11:30 a.m.  
**Washington Week** – Fridays, 7:00 p.m.; Sundays, 11:00 a.m.  
**Weekends with Yankee** – Sundays, 2:30 p.m. (except 29th)  
**Welcome to My Studio** – Fridays, 1:30 p.m.  
**Well Read** – Sundays, 5:00 p.m. (except 29th)  
**Woodwright's Shop** – Saturdays, 2:00 p.m.; Wednesdays, 10:30 a.m.  
**You Should Know** – Thursdays, 9:30 p.m. (except 5th)

## April 3-1 Specials

**4 Wheel Bob** – Tuesday, 24th, 8:00 a.m.  
**American Experience** –  
    “**Roads to Memphis**” – Tuesday, 3rd, 9:00 p.m.;  
        Wednesday, 4th, 8:00 a.m.  
    “**The Perfect Crime**” – Tuesday, 10th, 9:00 p.m.  
**Art Basel: A Portrait** – Monday, 2nd, 7:30 a.m.  
**Black America Since MLK: And Still I Rise (2 Pts.)** –  
    Tuesday, 3rd, 7:00 p.m. (Part 1); Wednesday, 4th, 7:00 p.m. (Part 2)  
**Civilizations** – Wednesdays, 7:00 p.m. (begins 18th);  
    Thursdays, 7:00 a.m. (begins 19th)  
**Colliding Dreams** – Tuesday, 24th, 7:00 p.m.  
**Dead Reckoning: War & Justice (3 Pts.)** – Monday, 2nd, 9:00 p.m. (end)  
**Defining Hope** – Tuesday, 17th, 8:00 a.m.  
**Earthcaster** – Thursday, 19th, 2:00 p.m.  
**First Civilizations** – Wednesdays, 8:00 p.m. (begins 25th)  
**GI Jews - Jewish Americans in World War II** –  
    Thursday, 12th, 7:00 p.m.  
**Great Performances “Will.I.Am – Landmarks Live in Concert”** –  
    Saturday, 21st, 8:00 p.m.  
**Great Performances at the Met “L’elisir d’amore”** –  
    Sunday, 29th, 2:00 p.m.  
**Himalaya Connection** – Thursday, 5th, 4:00 p.m.;  
    Friday, 6th, 8:00 p.m.; Saturday, 7th, 11:00 p.m.  
**Independent Lens** – Sundays, 9:00 p.m. (except 1st)  
    “**When God Sleeps**” – 8th  
    “**The Art of the Shine**” – 15th  
    “**What Lies Upstream**” – 22nd  
    “**Look & See: Wendell Berry's Kentucky**” – 29th  
**In Principle** – Fridays, 7:30 p.m. (begins 13th)  
**International Jazz Day from Cuba** – Saturday, 28, 8:00 p.m.  
**Jesus: Countdown to Calvary** – Sunday, 1st, 12:00 noon / 9:00 p.m.  
**Last Tango in Halifax** – Tuesdays, 2:00 p.m. (begins 10th)  
**Little Women: A Timeless Story** – Sunday, 1st, 8:30 p.m.;  
    Monday, 2nd, 2:30 p.m.  
**Live From Lincoln Center** – Saturdays, 7:00 p.m. (begins 21st)  
**Music Row: Nashville's Most Famous Neighborhood** –  
    Monday, 2nd, 7:00 p.m.; Tuesday, 3rd, 7:00 a.m. / 2:00 p.m.  
**Mystery of The Mountain: Hidden in Plain View** –  
    Tuesday, 17th, 8:00 p.m.; Wednesday, 18th, 8:00 a.m.;  
    Sunday, 22nd, 4:00 p.m.  
**New Environmentalists from Guatemala to The Congo** –  
    Wednesday, 18th, 9:30 p.m.  
**Paving The Way: The National Park-To-Park Highway (2 Pts.)** –  
    Thursday, 5th, 7:00 a.m. / 2:00 p.m. (Pt. 1);  
    Thursday, 12th, 7:00 a.m. / 2:00 p.m. (Pt. 2)  
**Power to Heal: Medicare and the Civil Rights Revolution** – Tuesday,  
    24th, 9:00 p.m.; Wednesday, 25th, 8:00 a.m.  
**Price of Peace: A Personal Exploration by Johan Norberg** –  
    Friday, 6th, 9:00 p.m.  
**Project Asteroid: Mapping Bennu** – Wednesday, 11th, 8:30 p.m.  
**Soundbreaking** – Saturday, 7th, 7:00 p.m.–9:00 p.m. (Pts. 4–6);  
    Saturday, 14th, 7:00 p.m.–8:00 p.m. (Pts. 7–8)  
**Spectrum: A Story of the Mind** – Thursday, 5th, 9:30 p.m.  
**Speedy Delivery** – Monday, 23rd, 7:00 p.m.; Tuesday, 24th, 7:00 a.m.  
**Spying On the Royals (2 Pts.)** – Monday, 9th, 7:00 p.m. (Pt. 1);  
    Tuesday, 10th, 7:00 a.m. (Pt. 1); Monday, 16th, 7:00 p.m. (Pt. 2);  
    Tuesday, 17th, 7:00 a.m. (Pt. 2)  
**They Shall Not Perish: The Story of Near East Relief** –  
    Tuesday, 17th, 7:00 p.m.  
**Treozors: The Lost Jews of Kastoria** –  
    Wednesday, 11th, 7:00 p.m.  
**Without A Net: The Digital Divide in America** –  
    Tuesday, 10th, 7:00 p.m.; Wednesday, 11th, 8:00 a.m.  
**World of Ice Dance International** – Monday, 30th, 7:00 p.m.



Postman Butterfly

Butterflies have been making our planet more beautiful for more than 50 million years. Today a dazzling array of nearly 20,000 different species inhabit the globe. A vibrant new **NATURE** special, “**Sex, Lies and Butterflies**” follows the lives of these incredible insects from egg to caterpillar to chrysalis to the emergence of the mature winged creature.

The film explores the astonishing survival techniques of butterflies, including their 360° vision, deceptive camouflage, chemical weaponry, and fantastic flight across continents. Sophisticated macro-filming offers viewers a rare glimpse beyond the butterflies’ bright colors and fragile beauty as it follows them on one of the greatest migrations on Earth.

**Wednesday, 4th, 7:00 p.m. (3-2)**  
**Saturday, 7th, 11:00 p.m. (3-2)**

**Wednesday, 4th, 9:00 p.m. (3-1)**  
**Monday, 9th, 6:00 a.m. (3-1)**