



Creative Living with Sheryl Borden

7100 Series - Crafts Section II



Table of Contents

Crafts

| | |
|---|-------|
| Ribbon Embellishment..... | I-3 |
| Step-by-Step Nuno Felting | I-5 |
| Tulip Fabric Markers | I-6 |
| “Green” Jewelry | I-7 |
| Cards and Scraps..... | I-8 |
| Toppings & Backings for Creative Machine Arts, Embroidery, Sewing, Quilting & Crafting | II-10 |
| Inked Embossing Folder Background..... | II-11 |
| Double Slider Cards | II-12 |
| Faux Opals with EasyCast | II-13 |
| Making a Mold with Silicone Putty | II-14 |
| Resin Tray with EnviroTex Lite | II-14 |
| Kinkajou Bottle Cutter Kit..... | II-15 |
| Making Duct Tape Rosettes & Pouches | II-15 |
| Guests | II-16 |

Due to the size of this section, it has been separated into two sections in order for it to be downloaded more quickly. For instance, “Ribbon Embellishment” is in Section I on page 3, whereas “Toppings & Backings for Creative Machine Arts...” is in Section II on page 10.

Toppings and Backings for Creative Machine Arts, Embroidery, Sewing, Quilting and Crafting



SULKY CUT AWAY STABILIZERS

- * Permanent Stabilizer
- * Eliminates Pulled or Sagging Stitches
- * Excellent Stretch Resistance
- * Reliable; remains with fabric for continued stabilization through laundering and wearing

Examples:

Sulky Cut Away Plus, Sulky Soft 'n Sheer, Sulky Fuse 'n Stitch, Sulky Tender Touch and Sulky Soft 'n Sheer Extra



SULKY TEAR AWAY STABILIZERS

- * Temporary Stabilizer
- * Easy Tear Away Removal
- * Prevents Stitch Distortion
- * Versatile; use one or more layers then tear away layers separately to avoid pulled stitches

Examples:

Sulky Tear-Easy, Sulky Totally Stable, Sulky Sticky Plus, and Sulky Stiffy



SULKY WASH AWAY STABILIZERS

- * Temporary Stabilizer
- * Easy Removal with Water
- * Great Transfer Medium
- * Ideal when you do not want any stabilizer to show on top or bottom

Examples:

Sulky Solvy, Sulky Super Solvy, Sulky Ultra Solvy, Sulky Paper Solvy, Sulky Fabri-Solvy and Sulky Sticky Fabri-Solvy



SULKY HEAT AWAY STABILIZERS

- * Temporary Stabilizer
- * Disintegrates with Heat
- * Brushes Away Easily
- * Perfect to use when wetting or tearing would cause distortion to stitches or damage to fabric

Example:

Sulky Heat-Away Clear Film

SULKY STABILIZER SAMPLER

Choosing the right stabilizer just got easier with Sulky's color-coded packaging. Descriptive icons designate the four basic stabilizer categories that are defined by the way in which they are removed; Cut-Away, Tear-Away, Wash-Away and Heat-Away.



This Stabilizer Sampler Pack is a wonderful teaching tool and is also the perfect way to purchase all the Sulky Stabilizers very inexpensively. Then you can choose with confidence just those stabilizers that work best for you.

Sampler includes 19 - 8" x 10" Stabilizers

COURTESY: Sue Hausmann
Sulky of America
www.sewandquiltwithsue.com

Inked Embossing Folder Background

Paper Leaves

Cutting the pieces:

Card base: 4 1/4" X 11" scored along 11" side at 5 1/2" (Early Espresso paper by Stampin Up)

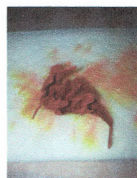
Layer: one piece 4 1/8" X 5 3/8" (Cajun Craze) card front

Layers: two pieces 4" X 5 1/4" (Very Vanilla) one for card front, one for card inside

Sentiment: 1 1/4 X 3 5/8" (Very Vanilla) Stamp "Thankful" sentiment from Six Sayings stamp set.

Creating the leaves:

Using the Leaflets Framelits, cut three leaves of different colors and shapes. Spritz both sides of the leaf with water or alcohol and allow the liquid to soak into the cardstock. Carefully wad the leaf into a loose ball and then spread back out. Allow some of the wrinkles to stay in the cardstock. Using your fingers, pinch a stem/vein down the middle of the leaf. When you achieve the desired look, allow cardstock to dry COMPLETELY. When dry, lightly sponge edges of leaf with Early Espresso.



Create the background:



Using the Woodland Textured Impressions Embossing Folder and one piece of the 4" X 5 1/4" Very Vanilla paper, ink the side of the embossing folder with the background raised using Crumb Cake and a brayer. On most embossing folders this will be the side that has some print on it.

Sponge the tops of the trees lightly with Early Espresso ink.



Stamp sentiment on the 1 1/4" X 3 5/8" Very Vanilla Cardstock. Round corners if desired.

Build the Card:

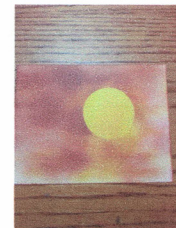
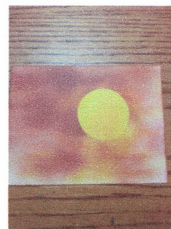


Glue the embossed background to the 4 1/8" X 5 3/8" Cajun Craze piece, then glue both to the card front. Use dimensionals to adhere the sentiment. Tie the three leaves together with Linen Thread and glue to card front. Stamp sentiment to the remaining Very

Vanilla cardstock and glue to the inside of card.

Another background embossing technique:

Sponge a 4" X 5 1/4" piece of cardstock with desired design. Emboss the cardstock. Brayer lightly the raised portion of the embossed design.

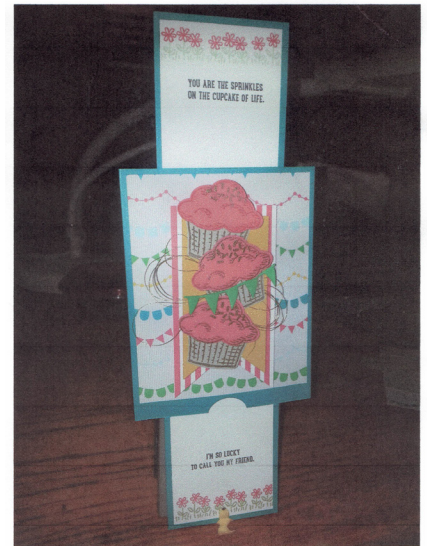


**COURTESY: Diane Tunnell
Stampin' Up!**
www.stampwithwiladiane.com



Double Slider Cards

The double slider card should be constructed of heavyweight card stock. I would recommend the 80 lb. cardstock from Stampin' Up!



Cut the pieces:

Begin with an 8 1/2" X 11" piece of cardstock cut as shown in the diagram 1.

1. Along the 11" side, cut at 5 1/2". Use one of the 8 1/2" X 5 1/2" pieces for the card base. Score this piece along the 8 1/2" side at 4 1/4".

2. Use the other 8 1/2" X 5 1/2" piece for the slider mechanism. Cut along the 8 1/2" side at 4". Trim 1/4 off the 4" wide piece to make a rectangle that is 4" X 5 1/4". Cut the remaining piece of cardstock at 2 3/4" along the 5 1/2" side.

3. Cut a 1/4" strip from either end of the slider (the 4" X 5 1/4" piece) that is 3/8" from the sides. See diagram 2.

4. Cut a strip from a cellophane bag that is 3" wide x at least 11" long.

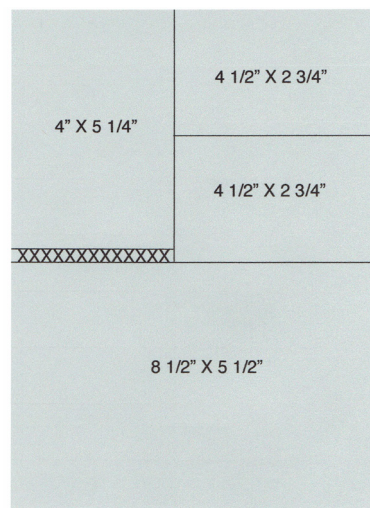


Diagram 1

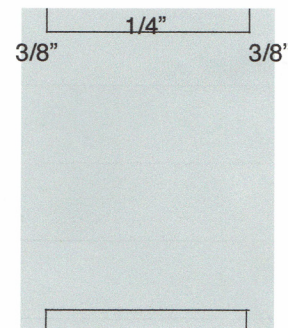


Diagram 2

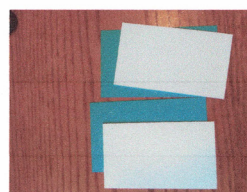
Build the Card:



cellophane.

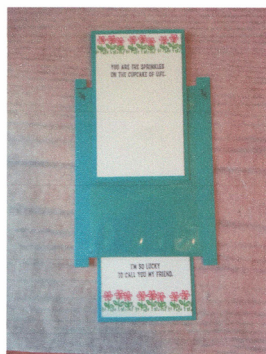
Wrap the cellophane around the slider mechanism and adhere together using Tear & Tape Adhesive. Cellophane should be loose enough to slide freely yet snug enough to stay in place. Do not allow any adhesive to get on the cardstock. The cellophane must be able to move. Trim excess

one will slide down when decorating these. Do not have too many layers as these will need to slide inside the card base.

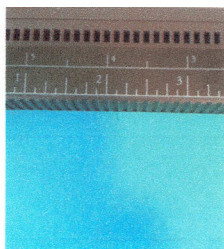
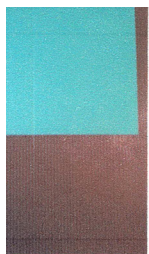


Using the two 2 3/4" X 4 1/2" pieces of cardstock and your choice of 2 1/2" X 4 1/4" layers to design the sliders. Keep in mind one will slide up and

Adhere the two sliders to the **cellophane only** of the slider mechanism. Place the slider that will slide up on top with Tear & Tape Adhesive on back along the bottom of the piece. The slider that will slide down is glued to the back of the mechanism with the stamped side toward the mechanism so that it will show when the card is open.



When scoring the card base at 4 1/4", also make a small mark at 2 1/8". Use this mark to punch a small half circle or half oval (as shown).



Glue the slider inside the card base, keep glue on cardstock **only** NOT on the cellophane. The half circle punch should be the bottom front of the card. Punch a small hole on the bottom slider for ribbon or string. Decorate card front as desired.



Faux Opals with EasyCast®

ETI EasyCast®
ETI Casting Color, Black
ETI Release Spray
Fantasy Film, assorted
ETI Jewelry Mold
Jewelry bail
Ribbon or chain
Scissors
Cups
Stir sticks
Glue
Lighter
Timer



Directions:

1. In two cups, measure out equal parts of the resin and hardener. Pour the resin into the hardener. Stir slowly for two full minutes.
 2. Pour the resin into the second cup. Stir the resin slowly for one full minute.
 3. Spray the mold with the mold release. Pour resin into desired molds. Cut the Fantasy Film into tiny pieces and place on top of the resin. Set aside for four hours.
 4. Mix another batch of resin as you did previously. Add a couple drops of color. Mix thoroughly until the color is blended into the resin. Add more color for a deeper shade of black if needed.
 5. Pour the black resin on top of the molds you set aside. Set aside for twelve hours. Then, pop them out of the molds. Trim around resin pieces with scissors, if needed.
 6. Glue Faux Opal pieces onto a bail and add a ribbon or chain for a necklace.
- Note:** Use a lighter to remove any bubbles that rise to the surface.



COURTESY: Diane Tunnell
Stampin' Up!
www.stampwithtwiladiane.stampinup.net

COURTESY: Ann Butler
Ann Butler Designs
www.annbutlerdesigns.com

Making a Mold with Silicone Putty

Easily create molds for small impression type objects! Odorless, Non Toxic. FDA Compliant, Food Grade.

EasyMold Silicone Putty is ideal for a wide range of impression type mold applications, including Castin'Craft Clear Casting Resin, EasyCast Clear Casting Epoxy, wax, baking, chocolates, ice cubes, soap, plaster, air dry clay, concrete and low melt metals! EasyMold is an easy to use two component silicone putty.



- Easy to use, 3 Minute working time, 25 minute cure.
- Ideal for small molds, excellent detail from original.
- Strong, flexible, reuseable molds.
- High heat range, up to 400° F.
- No shrinkage.
- Self releasing, no mold release agent required for most applications.

Supplies:

ETI Silicone Putty

Assorted Items to use to make a mold

1. Measure equal parts of A and B.
2. Mix together until you have a uniform color.
3. Roll into a ball and flatten slightly to about the same size as the item you will be making a mold from. Note: you want this to be thick.
4. Press your item into the putty, press up along the edges to get the complete shape. Let set 20 minutes and remove the item.

Resin Tray with EnviroTex Lite

A clear, high-build coating for protecting and beautifying almost any material. 1 coat equals up to 50 coats of varnish. This 2-part polymer coating provides a durable, high-gloss finish. Easy-to-use. Simply measure, mix, and pour. Contains no solvents. Impervious to water and alcoholic beverages and requires very little care. Great for hobbies and crafts as well as table and counter tops.



Supplies:

EnviroTex Lite

Wooden Serving Tray

Chalk it Up! Paint, color of choice

Iridescent Paint, color of choice

Shells (or something to put inside the tray)

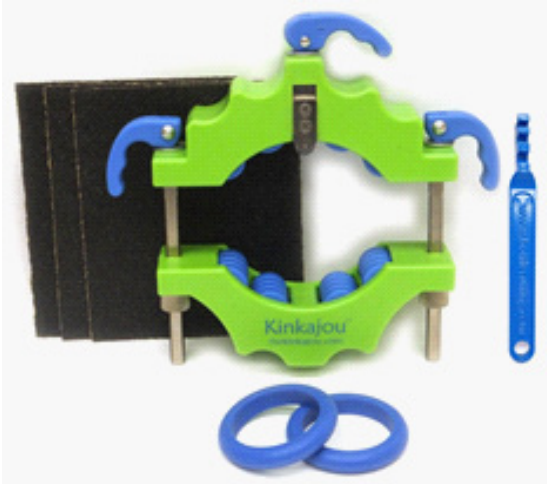
Tools: Cups, Stir Stick, Paint Brush, Lighter

1. Paint the inside and outside of the tray with Chalk it Up!. Let dry.
2. Paint a light coat of Iridescent onto the tray. Let dry.
3. Mix 7 ounces of EnviroTex Lite according to the manufacturer's instructions.
4. Pour resin into the bottom of the tray. Place shells into the resin, where desired. Use a lighter to remove bubbles if needed. Let dry for 12 hours.
5. Mix 7 ounces of EnviroTex Lite, according to the manufacturer's instructions. Pour over first layer of resin. Use a lighter to remove bubbles if needed. Let dry for 12 hours.
6. Mix 7 ounces of EnviroTex Lite, according to the manufacturer's instructions. Pour over second layer of resin. Use a lighter to remove bubbles if needed. Let dry for 24 - 48 hours.

Note: You may have to adjust the amount of resin for your tray as it may be smaller or larger than the one used in the project.

COURTESY: Ann Butler
Ann Butler Designs
www.annbutlerdesigns.com

Kinkajou Bottle Cutter Kit



Kit includes:

- Bottle Cutter with Carbide Cutting Wheel
- 2 Silicone Separation Rings (fits common bottle sizes)
- Glass Tapper Tool
- 3 Silicon Carbide Sandpaper Pieces - 80 Grit
- Instructions

Bottle Cutting Made Easy:

Kinkajou is the revolutionary way to turn your favorite brands of glass bottles into custom tumblers, vases, candle holders and more. The unique design of this bottle cutter can be easily adjusted to fit bottles from the smallest soda or beer bottle up to 1.5 liter magnums - and when you're done, it slides closed for compact storage.

To use, simply loosen the Kinkajou on both sides, insert your bottle, tighten evenly, flip a lever to engage your cutter head and twist to score. The rolling wheels help keep the bottle moving smoothly and aligned for a seamless score.

COURTESY: Elena Etcheverry
Charity Wings
www.charitywings.org



Making Duck Tape Rosettes and Pouches

Marissa Pawelko represents Westcott Non Stick Scissors, and she will show how to make duck tape rosettes using their non-stick cutting tools and Duck Tape rolls and sheets. The rosettes can be made in different sizes, colors and patterns and are great for embellishing. They can be used in jewelry making (for corsages, necklaces, brooches), gifts and in home decor, too. Marissa will show the layering technique for creating outlined effects with Duck Tape sheets to create the band for a corsage.



The pouches can also be made in different sizes, colors and patterns, and they can be easily embellished, too. They are great for giving as a gift, holding gift cards, make-up, money, business cards, change, etc.

COURTESY: Marissa Pawelko
Modern Surrealist
Westcott Brand Cutting Tools
www.modernsurrealist.com

Crafts Guests

Shannon Bielke

Sha & Co
292 W. Midway St.
Payson, AZ 85541
928-472-7404
shaandco@hotmail.com
www.tulip.com

Ann Butler

Ann Butler Designs
441 Commercial Ave.
Villard, MN 56385
320-554-2313
320-491-8882 (cell)
Am-designs@embarqmail.com
www.annbutlerdesigns.com

Barbara Crawford

Crawford Designs Patterns
22511 Carter Moir Ln.
Katy, TX 77449
816-673-9081
Barbara.crawforddesigns@comcast.net
www.crawforddesignspatterns.com

Patty Dunn

All Dunn Designs
4910 Oakmont Dr.
Corpus Christi, TX 78413
361-993-0034
alldunndesigns@aol.com
www.alldunndesigns.com

Elena Etcheverry

Founder & ED – Charity Wings
287 Industrial Street City
San Marcos, CA 92078
618-850-3777
elena@charitywings.org
www.charitywings.org

Sandy Grossman-Morris

Sandy Grossman-Morris Design
624 Cashew Court
Brentwood, CA 94513
925-240-904
sandy@sandygrossman-morris.com
www.sandygrossman-morris.com

Sue Hausmann

Sulky of America, Inc.
494C Paseo Cerro
Green Valley, AZ 85614
440-725-7626
sewhausmann@gmail.com
www.sewandquiltwithsue.com

Marisa Pawelko

Modern Surrealist
San Miguel de Allende, Mexico
773-243-6186
marisa@modernsurrealist.com
www.modernsurrealist.com

Dana Pomroy

4405 Driftwood NW
Albuquerque, NM 87114
505-250-0516
dana.pomroy@live.com

Lisa Rojas

Stampin' Queen Creations
13638 Rockledge Dr.
Victorville, CA 92392
760-952-2262
lisa@stampinqueencreations.com
<http://stampinqueencreations.blogspot.com>

Diane Tunnell

Independent Demonstrator – Stampin' Up!
2500 Hammond
Clovis, NM 88101
575-799-3183
Dtunnell1@suddenlink.net
<http://www.stampinup.net/esuite/home/stampwithtwiladiane/>