

Creative Living

with Sheryl Borden



Crafts
Section II

6800 Series

Table of Contents

Crafts

Cards and Scraps.....	I-3
Photo-Fabulous Layouts with Flip Flaps.....	I-5
Westcott Scissor Mouse Paper Trimmer	I-6
Double Embossed Card	I-6
Crystal Floral Jewelry Set.....	I-7
Embellishments for Doll Furniture	I-8
Creating Texture with Catch & Release.....	I-9
Custom Needlework	II-10
Easy Peel & Stick Lampshades.....	II-11
Easy Designs with Edger Punches.....	II-12
Playarn	II-13
Yummy Yarns to Knit & Crochet Your Way	II-14
Simply Elaborate Stencils.....	II-15
“Green” Jewelry	II-16
Over Stamping Effect	II-17
Mixed Media Art Mosaic	II-18
Guests	II-19

Due to the size of this section, it has been separated into two sections in order for it to be downloaded more quickly. For instance, “Cards and Scraps” is in Section I on page 3, whereas “Custom Needlework” is in Section II on page 10.

Stitching memories!

CUSTOM NEEDLEPOINT

What would you like us to put on canvas?



Combining your artwork or photographs with the talents of our design staff, we create custom giclee printed needlepoint designs on Zweigart Deluxe Canvas. o.k., let's get started...

1. Eeny, meeny, miney, moe...be art smart! [when choosing images] **Size really does matter!**

- *Copies or scans* of regular photos that are increased in size will generally get “fuzzy.” Try scanning at a higher resolution.
- *Measure* key areas in your image. One Inch = 13, 14 or 18 stitches (depending on your choice of canvas).
- I can *decrease* the size of your image and stay in proportion. Also I can usually crop to make a weird size manageable for framing, depending on if you are willing to “let go” of a portion of the image. And, I can remove an unwanted background and make it a solid color.
- *Choose photos* that are lighter and have good contrast. A photo that is all dark with little or no contrast is not a good choice to place on canvas.

2. Shutterbugging....be art smart! [when creating images] **Size still matters!**

- *Digital* is really great, just be sure to set your camera to a high resolution. Each camera is different, so check out the booklet it came with.
- *Save* the image as a jpeg or tiff. Send it to me as a full size attachment. Do not embed into the email.
- *Before* you take the photo, take a moment to think about what it is you want to capture for your project. If you are focusing on a pet, for example, get close-up shots. Make sure that the kitty is the largest object in the photo!
- *Plan ahead!*
- *Example:* Planning a holiday stocking featuring a beloved old pick-up truck? Think about how you'd like that truck to be placed on the stocking, perhaps at the angle of the heel with the front of the truck facing the toe of the sock. Take your photo at an angle from the headlight closest to you. Keep in mind which way you want the toe to face.
- *More is better!*
- *Take a few* shots at slightly different angles and, if possible, at different times of the day, as the lighting changes.



3. A Bit of Inspiration....be art smart! [when planning your project] **Decisions, Decisions!**

- *ART*...drawings, paintings...children's art is especially endearing in a gift project.
- *Ranch* brands, business logos
- Most *military* emblems
- *Photos* of people, pets, homes, buildings, flowers, cars, pick-ups & other modes of transportation

4. Take it beyond the frame....be art smart! [when creating a fab project] **What Can I Make?** Here are a few ideas:

- *Pillows*...ring bearer, new baby, home decor
- *Holiday* Stockings or Ornaments
- *Tote Bag* or Purse inserts
- *3 Dimensional* Figures or Dolls



5. Before I Forget to Tell You....be art smart! [with your design] **Important Information. Put it on canvas.**
- *Contact* your local needlepoint shop and have them place your order with me. If you do not have a local shop that can assist you, you may contact me directly.
 - *I cannot* accept copyrighted images, unless you hold the copyright or have permission to use it. It's the law.
 - *You will receive* an e-mail of the design for art approval. Be aware that all computer screens will show colors a little differently. Once I have your final approval, along with your payment, your canvas will go into production.
 - *All sales* are final. There are no returns, unless we print someone else's image and send it to you.

COURTESY: Sandy Morris-Grossman
Sandy Morris-Grossman Designs
www.sandygrossman-morris.com

Easy Peel and Stick Lampshades

Supplies:

- Conso blank lampshade shade (size of your choice.) Read all manufacturers' instructions and cautions before you begin and choose your supplies
- 1/4 yard fabric or paper to cover lamp. Hint: hold fabric or paper in front of a lit bulb to see how the light shines through. This may determine your choice
- Trims (measure around shade edges plus 2" to determine length of trim.)
- Craft glue, scissors, pins, fabric marker, pencil
- Additional embellishments of your choice



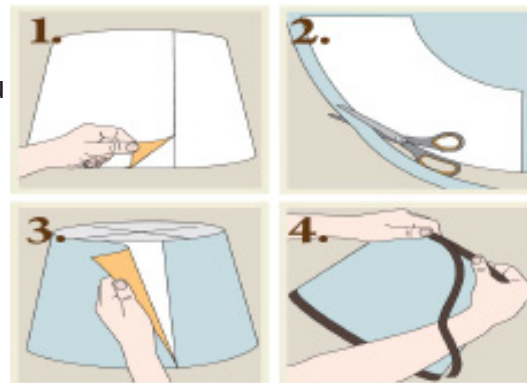
Instructions:

1. Peel paper template off shade (see manufacturers' instructions)
2. Lay template onto fabric and cut out. If using paper, hold template down and trace around with pencil or fabric marker. May also use repositionable spray adhesive on the larger shades.

3. Place edge of paper or fabric onto backside of shade and gently roll around. If using large shades it is best to

have an extra set of hands. You will have a slight overlap on the backside of shade. Glue down.

4. Starting on the back, run a bead of glue on edge of shade and begin to press trim onto shade. Continue until you reach starting point, fold under raw edge of trim and glue down. Repeat on opposite shade edge. Embellish as you choose.



All Conso blanks and Simplicity trims available at www.simplicity.com.

COURTESY: Michele Muska
Simplicity Creative Group
www.simplicity.com



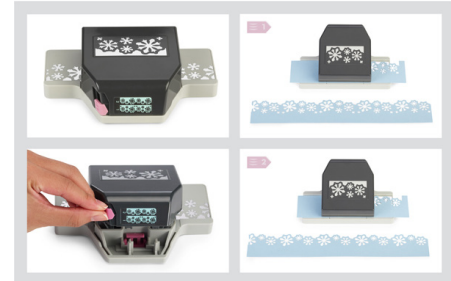
Easy Designs with Edger Punches



Pink Hearts Valentine's Day Card

Directions:

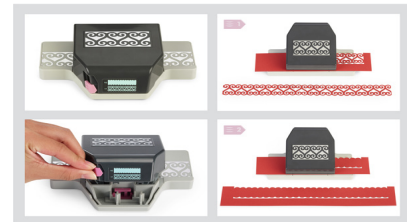
1. Using ruler and bone folder on cutting mat, score and fold medium pink cardstock in half to form card base.
2. Punch edge of card front using edge punch. Begin by selecting a measurement line on the edge punch, and align one end of the card with that line. Punch the length of the card, aligning the punched paper over the design on the tool as you go. Then go back and punch the remainder of the edge.
3. Cut a strip of dark pink cardstock to fit the width of the card. Align one end of the strip with the same line on the punch as before. Punch the length of the paper. Then flip the paper over, and align the same end of the paper with the same line on the punch, and punch the length of the paper again to yield a symmetrical punched pattern.
4. If necessary, trim side of card and dark pink strip so the edge-punched patterns on both pieces are centered. Adhere dark pink strip to card front. Reserve one large punched heart for later use.
5. Punch three ruffled hearts from light pink cardstock. Trim around all four sides to create frames.
6. Adhere ruffled heart frames to card base.
7. Punch a ruffled heart from medium pink cardstock. Adhere the punched heart shape to middle frame with foam adhesive. Adhere the reserved dark pink heart to the medium pink heart using a fine-tip glue pen.



Snow Flurries 2-in-1 Edger Punch



Linked Circle Chain Large Edge Punch



Scallop and Heart 2-in-1 Chain Punch



Rose Bush 2-in-1 Edger Punch

These edgers, and many more, are available from EK Success Brands (see website below.)

COURTESY: Megan Thome (formerly)
EK Success Brands
www.eksuccessbrands.com

Playarn

How to cut plastic grocery bags into yarn

1. Smooth out the bag the best you can



2. Cut off the handles and the bottom of the bag



3. Cut from one folded edge stopping a few inches from the opposite fold. The width of the strips is your choice. This bag is cut into 1 1/2" strips.



4. Open out the bag and cut from cut one up to cut two.



5. This will give you one continuous strip.

This technique is similar to cutting continuous bias tape.



**COURTESY: Nancy Lovett
Designer & Sewer**



Yummy Yarns to Knit & Crochet Your Way

There are new tools in crochet. One is a new tool that makes the process of crochet more like knitting, and another is a looped needle that allows you to make two socks at the same time. Plus why bamboo is perfect for knitting and crochet needles. This segment will also include knitting on a loom. Knitting is always a popular craft, but not all of us find it easy to keep our tension loose and stitches from dropping so why not use a loom? Loom knitting is fun and fast. Looms are round and rectangular plus the knitting comb and spool.

You can find all the products and projects at:

<http://www.FaveCrafts.com>

<http://www.FaveQuilts.com>

<http://www.CutRateCrafts.com>

<http://www.AllFreeCrochet.com>

<http://www.AllFreeKnitting.com>

<http://www.AllFreeSewing.com>

Baby Cap

Materials:

- Small round knitting loom
- Your choice of yarn
- Stitch Tool
- Scissors
- Embellishments: pom poms, yarn flower, crocheted flower, yarn tassel, bow, or your choice



Instructions:

1. Wrap yarn around pegs of loom twice, and then start your stitching. You'll loop the bottom yarn wrap over the top yarn wrap, and then over the peg. You'll add another row of yarn and repeat until size of cap is achieved. You'll need an average of 19-22 rows to complete a cap.

2. Thread yarn through loops of last row, gather, and tie off. You can also use ribbon or floss to tie off. Make sure this is a secure knot as it holds all the rows of knitting together.

3. Embellish!

Flowers & Pom Poms

There is a huge variety of specialty and trendy yarns in the latest home decor and fashion colors.

Pom poms are back! And you'll never believe just how easy it is to make amazing pom pom shapes, including the new heart pom poms using a cool template. You can also use pom poms to embellish, make jewelry, and so much more. There is also a new flower loom available, and retro is hip and hot.



You can find all the products and projects at:

<http://www.FaveCrafts.com>

<http://www.FaveQuilts.com>

<http://www.CutRateCrafts.com>, <http://www.AllFreeCrochet.com>

<http://www.AllFreeKnitting.com>

<http://www.AllFreeSewing.com>

School Spirit Shoe Charms

Materials:

- Clover Pom Pom Maker Small
- Yarn of your choice
- Scissors
- Darning needle (needle with large eye)



Instructions:

1. Following pom pom maker instructions and using school colors, wrap your yarn, tie off leaving at least 4" extra on each side (so you can attach to shoes), and remove from maker. Repeat 3 more times.
2. Trim pom poms to nice round shape. Attach two pom poms together using a darning needle and trim tie offs down to only 2. Attach to shoes on game day!

Retro Flower Brooch

Materials:

- Hana-Ami Flower Loom
- Yarn in your choice of colors
- Assorted beads, buttons, charms

- Pinback
- Scissors
- Needle and thread or fabric glue

Instructions:

1. Decide on your color choices of yarn. Using the Hana-Ami flower loom, create a flower, tie off, and remove from loom.
2. Embellish center of flower with beads, buttons, or charms. You can sew on or glue on. Allow to dry. Adhere pin back to back of flower.



**COURTESY: Maria Nerius
Designer & Crafter**
www.favecrafts.com



Simply Elaborate Stencils

Stencils are a classic art form. You can easily create beautiful art work by simply tracing. You can even use the edges to create coordinating frames and borders. Stencils are filled with endless possibilities! Simple to complex designs, they are perfect for paints, markers and crayons.

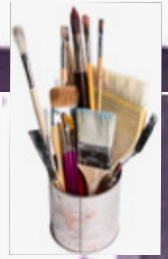
Nature Stencils: Tape your stencil in place with masking tape to avoid it moving around. Press down on the stencil to keep it flat to your surface. To vary your designs, just flip the stencil over to have the reverse image. This process can be done on many types of surfaces, i.e. walls, canvas, floors, paper. Start by putting a base coat on a piece of canvas and let it dry completely. Place the desired stencils on the canvas and tape down with masking tape. Apply the paint in the stencil area with a blotting motion to avoid the paint bleeding under the edges. Once the paint is dry, you can embellish your art with free hand drawing.

R5615 Nature Stencils, Age 5+ Up to 7? x 7? " (19 cm) 10/pkg. A great stencil set for creative children! Detailed shapes ideal for tracing and painting. Use the edges to create coordinating frames and borders. Includes stencils, templates and idea guide.

Rangoli Stencils: Tape your stencil in place with masking tape to avoid it moving around. Press down on the stencil to keep it flat to your surface. For a tiled effect, just flip the stencil over to have the mirrored image.

R5621 Rangoli Mega Stencils - Ages 5+. Rangoli is a traditional and beautiful art form from India. Complex stencil designs are commonly used to beautify floors and surroundings for festivals and special occasions. Extra large stencils are based on classic designs. Easy to use. 11 x 11" (28 cm). Comes with an extensive guide detailing this wonderful craft. 4/pkg.

**COURTESY: Sara Mower
Roylco, Inc.**
www.roylco.com



Sha & Co.

“Green” Jewelry

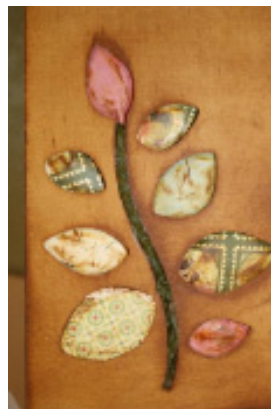
This project involves using recycled prod-



ucts along with paints to create beautiful jewelry. The base of the jewelry is chipboard, or a piece of cardboard (not corrugated.) You can use pre-cut chipboard pieces or cut your own – or use both.

1. Coat all pieces, front and back, with black acrylic paint.
2. When dry, coat all pieces with a mixture of gold and copper paints. Allow to dry. Gently rub a bit of the metallic paint off most pieces to reveal a bit of the black underneath.
3. Using the end of a small paintbrush, pound it over and over into the painted pieces to create the “old worked metal” look.

4. Using blue and green acrylic paints, dab a bit of each color on some of the pieces to create a patina effect.
5. Using needle nose pliers, separate pieces of old chains and connect them to individual pieces of jewelry with holes already pierced in them.
6. Build a necklace and bracelet by putting pieces together as desired, connecting with rings and chain sections. Create earrings to match.



COURTESY: Shannon Bielke
Sha & Co.
www.shaandco.net

Over Stamping Effect



Create your own backgrounds for paper and fabric by Over Stamping with Ann Butler Designs Faux Quilting and EZ-De's Stamps. These basic geometric shapes have designs that can be stamped over each other in different colors to create awesome backgrounds. You can also over stamp over patterned paper and fabric to get another wonderful look. Have Fun and be CREATIVE!

Materials:

- Rubber Stamps: Ann Butler Designs EZ-De's from KellyCraft Innovations and Ann Butler Designs Faux Quilting Stamps by Unity Stamp Company
- Ann Butler Design's Crafters Ink by Clearsnap
- Cardstock or Fabric of choice
- Tools: Acrylic Block

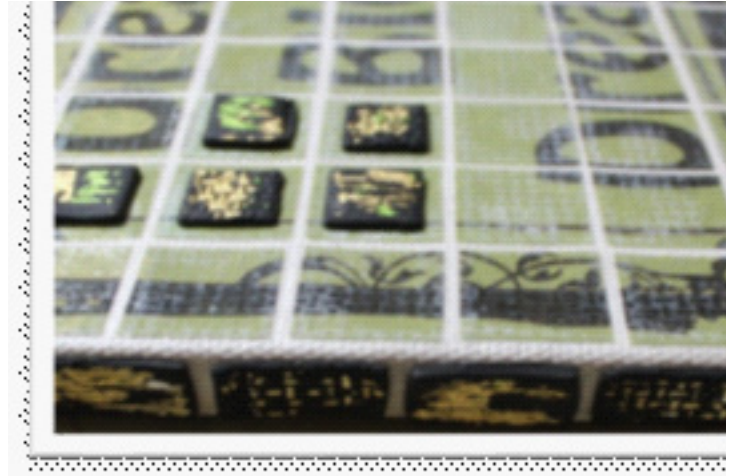
Instructions:

1. Place stamp of choice onto acrylic block.
2. Ink it up and stamp onto cardstock or fabric of choice.
3. Stamp an entire section, the size you want and then choose another stamp and color of ink to stamp directly over the previous stamping. This is an over stamping effect that creates a totally new pattern.



COURTESY: Ann Butler
Ann Butler Designs
www.creativitystirthesoul.com

Mixed Media ART Mosaic



Materials:

- Beacon Adhesives Fabri Tac, Felt Glue, Fast Finish Decoupage & 527 Multi Use Glue
- Rubber Stamps: Ann Butler Designs EZ-De's from KellyCraft Innovations and Ann Butler Designs Faux Quilting Stamps by Unity Stamp Company
- 8" x 10" Canvas by Canvas Corp
- Makin's Clay®: White or Black
- Makin's Clay® Roller
- Makin's Clay® Cutters: Rectangle or Square
- Colorbox Chalk Ink: Popcorn by Clearsnap
- Foils by Clearsnap
- Trim by Expo International
- Gesso by Earth Safe Finishes
- Decorative Paper of choice (8 1/2" x 11")
- Tools: FM Brush Company Paint Brush, Pattern with Font by Duetica, Westcott Brand Scissors, Westcott Brand Paper Trimmer, Acrylic Block, KellyCraft Get-It-Straight Laser Square with 2 – 4 blocks the height of canvas (optional), Pencil, Toothpick, Ziplock Bag, Baby Wipes

Instructions:

1. Copy pattern onto decorative paper.
2. Apply gesso to front and edges of canvas, let dry.
3. Using paper trimmer cut decorative paper to 7" x 9" being sure to keep in mind the area you want to use for your mosaic. Then cut this into seven 1" x 9" strips. Be sure to keep these in the correct order. Then cut each strip into nine 1" x 1" squares. Lay each strip out onto work station in order.

4. Use 1" square stamp of choice to stamp pattern onto each square with popcorn ink; this will help give dimension; notice how some squares have more ink than the others? This is ok as it adds interest in the piece.
5. Evenly space all of the mosaic pieces onto the canvas (optional: using the laser square as a guide) apply felt glue to the back of each 1" square using a toothpick, glue in place, let dry.
6. Apply fast finish decoupage on top canvas with paint brush, let dry. Repeat twice.
7. Roll clay out to about 1/8" thick, press stamp of choice into clay for texture.
8. Cut clay with clay cutters; between 20 – 26 pieces.
9. Apply a small amount of felt glue onto clay pieces with finger, let dry a few seconds (not completely) and apply foil onto clay pieces in small areas.
10. Glue clay pieces onto edge of canvas and in areas desired on front with 527 multi use glue.
11. Glue trim onto back of bottom edge of canvas with fabri-tac.

**COURTESY: Ann Butler
Ann Butler Designs**
www.creativitystirthesoul.com

Crafts Guests

Jana Beus

Doll Stuff by Jana
2268 Adams Ave.
Ogden, UT 84401
801-706-4863
jimjanabr@gmail.com
www.dollstuffbyjana.com

Shannon Bielke

Sha & Co
292 W. Midway St.
Payson, AZ 85541
928-472-7404
shaandco@hotmail.com
www.shaandco.net

Ann Butler

Ann Butler Designs
441 Commercial Ave.
Villard, MN 56385
320-554-2313
320-491-8882 (cell)
Am-designs@embarqmail.com
www.creativitystirthesoul.com

Barbara Crawford

Crawford Designs & Sunset Galleries
3109 Nebraska St.
Amarillo, TX 79106
816-673-9081
santa4u@sbcglobal.net
www.crawforddesigns.net

Patty Dunn

All Dunn Designs
4910 Oakmont Dr.
Corpus Christi, TX 78413
361-993-0034 or 361-815-5061
alldunn designs@aol.com
www.alldunn designs.com

Sandy Grossman-Morris

Sandy Grossman-Morris Design
624 Cashew Court
Brentwood, CA 94513
925-240-904
sandy@sandygrossman-morris.com
www.sandygrossman-morris.com

Nancy Lovett

10301 Nita Place NE
Albuquerque, NM 87111
505-292-1362
njlovett@aol.com

Sara Mower

Roylco, Inc.
P O Box 13409
Anderson, SC 29624
800-362-8656
sara@roylcoinc.com
www.roylco.com

Michele Muska

Simplicity Creative Group
6050 Dana Way
Antioch, TN 37013
413-455-7424
mmuska@simplicity.com
www.simplicity.com

Maria Nerius

FaveCrafts.com
141 Salmon Dr. NE
Palm Bay, FL 32907
321-951-3929
mnerius@cfl.rr.com
www.favecrafts.com

Marisa Pawelko

Westcott Brand Cutting Tools
P. O. Box 118
Winfield, IL 60190-0118
773-243-6186
marisa@modernsurrealist.com
www.modernsurrealist.com
www.westcottbrand.com

Carlie Robertson

Close To My Heart
1199 West 700 South
Pleasant Grove, UT 84062
801-830-0144
carlier@closetomyheart.com
www.closetomyheart.com

Lisa Rojas

Stampin' Queen Creations
13638 Rockledge Dr.
Victorville, CA 92392
760-952-2262
FAX: 760-952-2262
lisa@stampinqueencreations.com
<http://stampinqueencreations.blogspot.com>

Megan Thome

EK Success Brands
11125 NW Ambassador Dr.,
Suite 200
Kansas City, MO 64153
816-389-4150
www.eksuccessbrands.com

Diane Tunnell

Independent Demonstrator –
Stampin' Up!
2500 Hammond
Clovis, NM 88101
575-799-3183
Dtunnell1@suddenlink.net
www.stampwithtwiladiane.stampinup.net