

# Q2.3

Program Guide KENW-TV/FM  
Eastern New Mexico University  
November 2011



If you think the past has already happened, that the future is yet to be, that space is an empty void, and that ours is the only universe, there is a good chance you are wrong on all counts!

## **NOVA** “The Fabric of the Cosmos”

Four-hour mind-bending journey challenges our everyday perceptions of reality.

# When to watch from *A to Z*

## Regular Programs —November 2011

**All Creatures Great and Small** – Saturdays, 8:00 p.m. (ends 26th)  
**American Woodshop** – Saturdays, 6:30 a.m.  
**America's Heartland** – Saturdays, 6:30 p.m.;  
Sundays, 12:30 p.m. (except 20th)  
**Antiques Roadshow** – Mondays, 7:00 p.m./8:00 p.m. (except 21st)/  
11:00 p.m.; Sundays, 7:00 a.m.  
**Ask This Old House** – Saturdays, 4:00 p.m.  
**Austin City Limits** – Saturdays, 9:00 p.m. (9:30 p.m. on 26th)  
/12:00 midnight (12:30 a.m. on 27th)  
**Bake Decorate Celebrate!** – Saturdays, 7:30 a.m. (ends 19th)  
**Baking Made Easy** – Saturdays, 7:30 a.m. (begins 26th)  
**BBC Newsnight** – Fridays, 5:00 p.m.  
**BBC World News** – Monday–Friday, 6:30 a.m./4:30 p.m.  
**Beads, Baubles and Jewels** – Mondays, 12:30 p.m.  
**Beauty of Oil Painting** – Fridays, 12:30 p.m.; Saturdays, 12:00 noon  
**Charlie Rose** – Tuesday–Thursday, 11:00 p.m. (11:30 p.m. on 15th, 29th)  
**Classic Art Showcase** – Sunday–Saturday, 1:00 a.m.–6:00 a.m.  
**Classic Gospel** – Sundays, 8:00 a.m./4:00 p.m.  
**Classical Stretch** – Monday through Friday, 6:00 a.m.  
**Closer to Truth** – Sundays, 2:00 p.m. (20th only)  
**Consuelo Mack WealthTrack** – Fridays, 7:30 p.m.; Sundays, 6:00 p.m.  
**Cook's Country** – Saturdays, 8:00 a.m.; Mondays, 11:00 a.m.  
**Creative Living/Sheryl Borden** – Tuesdays/Thursdays, 12:00 noon;  
Tuesdays, 9:30 p.m.; Saturdays, 2:00 p.m.  
**Cultura** – Sundays, 12:00 noon (6th, 20th only)  
**European Journal** – Thursdays, 5:00 p.m.  
**Everyday Yoga with Amiee** –  
Monday–Friday, 6:57 a.m./5:27 p.m. (except Friday)  
**Field Trip!** – Sundays, 2:30 p.m. (except 6th, 27th)  
**Fly Tying: The Angler's Art** – Wednesdays, 11:30 a.m.  
**Fons & Porter's Love of Quilting** – Saturdays, 1:30 p.m. (begins 19th)  
**Frontline** – Tuesdays, 8:00 p.m. (except 15th);  
Thursdays, 7:00 p.m. (except 17th)  
**Globe Trekker** – Sundays, 11:00 a.m.  
**Healthy Body/Mind** – Sundays, 3:00 p.m. (except 27th);  
Wednesdays, 10:00 p.m.  
**Hometime** – Saturdays, 3:00 p.m.  
**Inside Washington** – Sundays/Mondays, 5:00 p.m.  
**It's Sew Easy** – Saturdays, 5:30 p.m. (ends 5th)  
**Joy of Music** – Sundays, 9:00 a.m./9:30 a.m.  
**Joy of Painting** – Saturdays, 11:30 a.m.  
**Knitting Daily** – Tuesdays, 11:30 a.m.  
**Lawrence Welk Show** – Saturdays, 7:00 p.m.  
**Market to Market** – Fridays, 7:00 p.m.  
**Masterpiece** – Sundays, 8:00 p.m.; Fridays, various  
“Case Histories” – 4th (11:00 p.m.)  
“Page Eight” – 6th, 11th (10:30 p.m.)  
“The Song of Lunch” – 13th, 18th (10:00 p.m.)  
“Framed” – 27th, Dec. 2nd (11:30 p.m.)  
**McLaughlin Group** – Sundays, 5:30 p.m.  
**Motorweek** – Saturdays, 9:30 a.m.  
**Nature** – Saturdays, 11:00 p.m. (11:30 p.m. on 26th)  
Wednesdays, 7:00 p.m. (except 23rd)  
**Need to Know** – Fridays, 8:30 p.m.  
**New Fly Fisher** – Wednesdays, 11:00 a.m.  
**News 3 New Mexico** – Monday–Thursday, 5:00 p.m.  
**Nightly Business Report** – Monday–Friday, 5:30 p.m.  
**Nova** – Wednesdays, 8:00 p.m./9:00 p.m. (except 23rd, 30th);  
Saturdays, 10:00 p.m. (10:30 p.m. on 26th); Sundays, 12:00 mid.  
**Official Best of the Fest** – Sundays, 11:30 p.m. (6th, 27th only);  
Mondays, 10:30 p.m. (except 21st)  
**P. Allen Smith's Garden Home** – Saturdays, 10:00 a.m.  
**Paint This with Jerry Yarnell** – Saturdays, 11:00 a.m.  
**Pati's Mexican Table** – Tuesdays, 11:00 a.m.; Saturdays 8:30 a.m.  
**PBS NewsHour** – Monday–Friday, 6:00 p.m./12:00 midnight  
**Quilt in a Day** – Saturdays, 12:30 p.m.  
**Quilting Arts** – Saturdays, 1:30 p.m. (ends 12th)  
**Red Green Show** – Thursdays, 9:30 p.m.

**Religion & Ethics Newsweekly** – Sundays, 3:30 p.m. (except 27th);  
Wednesdays, 5:00 p.m.  
**Report from Santa Fe** – Saturdays, 6:00 p.m.  
**Savor the Southwest** – Mondays, 11:30 a.m.  
**Scrapbook Soup** – Saturdays, 2:30 p.m.; Wednesdays, 12:30 p.m.  
**Scully/The World News** – Tuesdays, 5:00 p.m.  
**Second Opinion** – Sundays, 6:30 a.m.  
**Sewing with Nancy** – Saturdays, 5:00 p.m.  
**See It All** – Tuesdays, 12:30 p.m.; Saturdays, 5:30 p.m. (begins 12th)  
**Sit and Be Fit** – Monday, Wednesday, Friday, 12:00 noon  
**Song of the Mountains** – Thursdays, 8:00 p.m.  
**Sportslook** – Thursdays, 9:00 p.m. (except 24th)  
**Star Gazers** – Wednesdays, 11:57 p.m.; Saturdays, 10:57 a.m./  
9:57 p.m.; Sundays, 2:57 p.m./11:57 p.m.; Mondays, 10:27 p.m.  
**Taste of History III** – Thursdays, 11:30 a.m.; Saturday, 7:00 a.m.  
**This Old House** – Saturdays, 3:30 p.m.; Wednesdays, 10:30 p.m.  
**Tracks Ahead** – Mondays, 10:00 p.m. (begins 28th)  
**Travelscope** – Sundays, 6:00 a.m.  
**Truth About Money** – Sundays, 6:30 p.m. (except 20th)  
**Victory Garden** – Saturdays, 10:30 a.m.  
**Washington Week** – Fridays, 8:00 p.m.  
**Welcome to My Studio** – Thursdays, 12:30 p.m.; Saturdays, 4:30 p.m.  
**Why Quilts Matter** – Saturdays, 1:00 p.m.  
**Woodsmith Shop** – Thursdays, 11:00 a.m.; Saturdays, 6:00 a.m.  
**Woodsongs** – Thursdays, 10:00 p.m. (except 3rd)  
**Woodturning Workshop** – Saturdays, 9:00 a.m.  
**You Should Know** – Tuesdays, 9:00 p.m.

## Special Programs

**American Experience** – Tuesdays, 7:00 p.m.  
“Wyatt Earp” – 1st “Greely Expedition” – 22nd  
“War Letters” – 8th “Surviving the Dust Bowl” – 29th  
“Donner Party” – Sunday, 13th, 9:00 p.m.  
**America in Primetime** – Sundays, 7:00 p.m. (ends 20th)  
**American Masters “Woody Allen: A Documentary** –  
Sunday, 20th, 8:00 p.m. (Pt. 1); Monday, 21st, 8:00 p.m. (Pt. 2)  
**Angle of Attack** – Wednesday, 23rd, 9:00 p.m. (Pt. 1);  
Wednesday, 30th, 9:00 p.m. (Pt. 2)  
**Aviators** – Sundays, 12:00 noon (13th, 27th only)  
**Different is the New Normal (Tourette's)** – Tuesday, 22nd, 10:00 p.m.  
**Dinner Trains Out West** – Monday, 7th, 10:00 p.m.  
**Google World** – Friday, 18th, 11:00 p.m.; Sunday, 27th, 10:30 p.m.  
**Great Performances “Placido Domingo: My Favorite Roles”** –  
Sunday, 13th, 10:30 p.m.  
**Hayloft Gang: The Story of the National Barn Dance** –  
Thursday, 3rd, 10:00 p.m.  
**Heirloom Meals' Thanksgiving** – Saturday, 19th, 8:00 a.m.  
**In Performance at the White House “Country Music”** –  
Wednesday, 23rd, 7:00 p.m.; Sunday, 27th, 9:30 p.m.  
**Liquid Assets: The Story of Our Water Infrastructure** –  
Tuesday, 29th, 10:00 p.m.  
**Looking for Lincoln** – Monday, 7th, 9:00 p.m. (Pt. 1);  
Monday, 14th, 9:00 p.m. (Pt. 2)  
**Narrow Gauge Steam in the Rockies** – Monday, 14th, 10:00 p.m.  
**Nazi Hunt: Elusive Justice** – Tuesday, 15th, 7:00 p.m.  
Sunday, 20th, 10:00 p.m.  
**Northwest Rail Adventures** – Monday, 21st, 10:00 p.m.  
**PBS Arts Fall Festival** – Fridays, 9:00 p.m.; Sundays, 1:00 p.m.  
“Give Me the Banjo” – 4th, 6th  
“Bill T. Jones: A Good Man” – 11th, 13th  
“Women Who Rock” – 18th, 20th  
“Il Postino” – 25th, 27th  
**P.O.V. “Where Soldiers Come From”** – Tuesday, 15th, 10:00 p.m.  
**Reverence: Life in the Ballet** – Friday, 25th, 11:30 p.m.  
**Secrets in America: Crisis of Elder Abuse** – Monday, 21st, 9:30 p.m.  
**Secrets of the Dead** – Sundays, 10:00 a.m.  
**Sheriff Pat Garrett: Killer of Billy the Kid** – Thursday, 17th, 7:00 p.m.  
Monday, 28th, 9:00 p.m.  
**Smoky–War Dog Hero** – Tuesday, 22nd, 9:00 p.m.;  
Sunday, 27th, 7:00 p.m.  
**Thanksgiving Blessings with the Mormon Tabernacle Choir** –  
Sunday, 20th, 12:30 p.m./6:30 p.m.; Thursday, 24th, 9:00 p.m.  
**Will Ferrell: The Mark Twain Prize** – Sunday, 6th, 10:00 p.m.  
**Women, War & Peace** – Tuesdays, 10:00 p.m. (ends 8th)

# Q2.3 Program Guide

THE MAGAZINE FOR THE FRIENDS OF PUBLIC BROADCASTING NOVEMBER 2011

**Q2-3 Program Guide** is published each month by the Broadcast Center, a non-profit public service division of Eastern New Mexico University.

**Q2-3 Program Guide** (Cue to 3) is available to friends contributing \$35 per year or more to the support of public broadcasting. Senior Citizen and Student memberships are available for \$25. All contributions are tax deductible. Donations should be made payable to Friends of **KENW-TV** or to Friends of **KENW-FM** or **KMTH-FM**.

**KENW-TV**, Channel 3, can be seen on UHF TV analog translators in the following areas:

Carlsbad - Channel 49; Ruidoso - Channel 49  
Tucumcari - Channel 32; Ft. Sumner - Channel 34

**KENW-TV digital transmitters** are located in: Artesia; Carlsbad; Ft. Sumner; Hobbs; Portales; Clovis; Roswell; Tucumcari.

**KENW-FM**, 89.5 MHz, Portales; **KMTH-FM**, 98.7 MHz, Maljamar; **KENM-FM**, 88.9 MHz, Tucumcari; **NM**; **KENU-FM**, DesMoines, NM, and FM translators in the following areas:

Apache Springs - 90.9 MHz      Montoya - 90.7 MHz  
Clayton - 93.5 MHz              Raton - 104.7 MHz  
Conchas Dam - 88.3 MHz      Roswell - 91.1 MHz  
Ft. Sumner - 91.7 MHz          Roy - 104.9 MHz  
Las Vegas - 107.1 MHz        Ruidoso - 89.3 MHz  
Midland, TX - 99.5 MHz        Wagon Mound - 92.1 MHz

**Telephone:** From Cannon A.F.B., Clovis, Portales, and Roosevelt County, call (575) 562-2112. Others, call toll-free 1-888-FOR-KENW (367-5369).

**Mailing Address:**

KENW-TV/FM  
52 Broadcast Center, ENMU  
1500 South Avenue K  
Portales, NM 88130

**Web site:** www.kenw.org

**E-Mail:** kenwtv@enmu.edu — kenwfm@enmu.edu

**Fax:** (575) 562-2590

We always welcome your comments and/or suggestions:

Toll-free 1-888-FOR-KENW (367-5369)

4. **"The Fabric of the Cosmos"** on **Nova** is a four-part special that challenges our view of the universe and our notion of reality.
5. The fascinating 100-year history of Naval Aviation unfolds in **Angle of Attack**, a two-hour special that takes viewers from Eugene Ely's 1911 attempt to land his fragile bi-plane on a make-shift wooden deck to the GPS-guided weapons of today.  
**Nazi Hunt: Elusive Justice** explores why certain governments and institutions have failed to prosecute mass murderers, and introduces individuals who chose to pursue fugitive killers on their own.  
**The Hayloft Gang: The Story of the National Barn Dance** tells the story of one of the nation's most popular country music radio shows of the 1930s and 1940s.
6. **"Where Soldiers Come From"** on **P.O.V.** paints an intimate portrait of five young friends from rural Michigan who, in just four years, go from carefree teenagers to combat veterans dealing with TBI and PTSD.  
**"Woody Allen: A Documentary"** is a two-part film on **American Masters** that follows the notoriously private film legend for more than a year.  
**Different is the New Normal** is about the stigma and difficulties surrounding Tourette Syndrome, one of the nation's most publicly misunderstood disorders.  
**Smoky-War Dog Hero**, a KENW-TV production, is the heartwarming story of a four-pound Yorkshire Terrier who distinguished herself as "World War II's littlest soldier and most famous war dog."
7. The **PBS Arts Fall Festival** continues with four more great performances: **Give Me the Banjo**; **Bill T. Jones: A Good Man**; **Women Who Rock**; and **Il Postino** with Placido Domingo.  
**Sheriff Pat Garrett: Killer of Billy the Kid** is a unique documentary about the lawman's arrival in New Mexico, his marriage and family, his tumultuous professional career, and finally his mysterious murder.  
**Heirloom Meals' Thanksgiving** is a one-hour special that features the treasured family holiday recipes from a variety of guests, including a direct descendant of the Pilgrims and an Italian grandmother.

**Q2.3 Program Guide Staff**

Editor: **Linda Stefanovic**  
Assistant Editor: **Jenifer Baca**  
Program Log Descriptions: **Karen Leonhardt**  
Printing: **University Press**

Eastern New Mexico University is an affirmative action and equal opportunity employer. The University does not discriminate on the basis of race, color, national origin, sex, or handicap in its programs, activities, or employment. Persons seeking additional information about the University's nondiscrimination policy should contact the Executive Director of Planning & Analysis, ENMU, Station #2, Portales, NM 88130.

**ENMU BOARD OF REGENTS**

*President*  
**Mr. Chad Lydick**

*Vice President*  
**Mr. Randy Harris**

*Members*  
**Mr. Marshall Stinnett**  
**Mr. Brett Leach**  
**Ms. Santana Chavez**

**EASTERN NEW MEXICO UNIV.**

*President*  
**Dr. Steven G. Gamble**  
*Vice President for Academic Affairs*  
**Dr. Jamie Laurenz**  
*Vice President for Univ. Relations and Enrollment Services*  
**Ms. Ronnie Birdsong**  
*Vice President for Business Affairs*  
**Mr. Scott Smart**  
*Vice President for Student Affairs*  
**Dr. Judith Haislett**

**BROADCAST CENTER STAFF**

*Director of Broadcasting*  
**Duane W. Ryan**  
*Business Manager*  
**Terri Doerr**  
*Accountant*  
**Karen Leonhardt**  
*Director of Engineering*  
**Jeff Burmeister**  
*Engineers*  
**Rick Counts**  
**Porfirio Delgado**  
**Martin Quintero**  
*Engineering Consultants*  
**Larry Ahlstrom**  
**Jim Zupancic**  
*Santa Fe Studio*  
**Lorene Mills**  
**Sandy Seehaver**

**KENW-TV STAFF**

*Production/Community Services Dir.*  
**Don Criss**  
*Development Officer*  
**Sheryl Borden**  
*Programming Consultant*  
**Linda Stefanovic**  
*Director of Programming*  
**Jenifer Baca**  
*Director of Operations*  
**Orlando Ortega**  
*Development/Promotion Director*  
**Rena Garrett**  
*Department Secretary*  
**Candra Reynolds**

**KENW/KMTH-FM STAFF**

*Development Assistant, FM*  
**Carla Howard**  
*News Director, FM*  
**Jim Lee**  
*Operations Director, FM*  
**Shannon Hearn**  
*Audio Engineer*  
**Mickey Morgan**  
*Department Secretary*  
**Suzanne West**

**BROADCAST CENTER STUDENT STAFF EMPLOYEES**

David Asplund	Wes Dunkerson
Josh Bellin-Gallagher	Dusty Huddleston
Jennifer Bolin	Dolly Sarkar
Michelle Brown-Bousquet	Samuel Thomas
Molly Chavez-Wagy	Christy Waite
Brian Croke	Alex White
Jessica Draper	Lance Wood



## ***THE FABRIC OF THE COSMOS***

**Takes viewers to the frontiers of physics in a mind-bending new four-hour special that challenges our view of the universe and our notion of reality.**

Acclaimed physicist and host Brian Greene lets **Nova** viewers in on a secret: We've all been deceived. Our perceptions of time and space have led us astray. Much of what we thought we knew about our universe—that the past has already happened and the future is yet to be, that space is just an empty void, that our universe is the only universe that exists—just might be wrong.

In "The Fabric of the Cosmos," a new four-hour **Nova** special series, Greene takes viewers on a mind-bending reality check and journey to the frontiers of physics to see how scientists are piecing together the most complete picture yet of space, time, and the universe. With each step, audiences discover that just beneath the surface of our everyday experience lies a world we'd hardly recognize—a startling world far stranger and more wondrous than anyone expected. "It will convince people that everyday perception is a thoroughly, completely, profoundly misleading guide to the true nature of what is actually out there," says Greene.

### **What is Space?**

Space. To most of us, space is nothing, an empty void. Well, it turns out space is not what it seems. From the passenger seat of a New York cab driving near the speed of light to a pool hall where billiard tables do fantastical things, Greene reveals space as a dynamic fabric that can stretch, twist, warp, and ripple under the influence of gravity. Stranger still is a newly discovered ingredient of space that actually makes up 70% of the universe. Physicists call it dark energy because while they know it's out there, driving space to expand ever more quickly, they have no idea what it is. To top it off, some of the strangest places in space, black holes, have led scientists to propose that like the hologram on your credit card, space may just be a projection of a deeper two-dimensional reality, taking place on a distant surface that surrounds us.



**Physicist and host Brian Greene**

### **The Illusion of Time**

Time. We waste it, save it, kill it, make it. The world runs on it. Yet, ask physicists what time actually is, and the answer might shock you: They have no idea. Even more surprising, the deep sense we have of time passing from present to past may be nothing more than an illusion. How can our understanding of something so familiar be so wrong? Greene takes us on the ultimate time traveling adventure, hurtling 50 years into the future before stepping into a wormhole to travel back to the past. Along the way, he will reveal a new way of thinking about time in which moments past, present, and future—from the reign of T.Rex to the birth of your great-great-grandchildren—exist all at once. You'll never look at your wrist-watch the same way again.

### **Quantum Leap**

In this third episode, Greene takes a wild ride into the weird realm of quantum physics, which governs the universe on the tiniest of scales. Greene brings quantum mechanics to life in a nightclub like no other, where objects pop in and out of existence and things over here can affect others over there, instantaneously—without anything crossing the space between them. A century ago, during the initial shots in the quantum revolution, the best minds of a generation—including Albert Einstein and Niels Bohr—squared off in a battle for the soul of physics. How could the rules of the quantum world, which work so well to describe the behavior of individual atoms and their components, appear so dramatically different from the everyday rules that govern people, planets, and galaxies?

### **Universe or Multiverse**

Hard as it is to swallow, cutting-edge theories are suggesting that our universe may not be the only universe. Instead, it may be just one of an infinite number of worlds that make up the multiverse. Greene takes us on a tour of this brave new theory at the frontier of physics, explaining why scientists believe it's true and showing what some of these alternate realities might be like. Some universes may be almost indistinguishable from our own; others may contain variations of all of us, where we exist but with different families, careers, and life stories. In still others, reality may be so different from ours as to be unrecognizable. Greene reveals why this radical new picture of the cosmos is getting serious attention from scientists.

"The Fabric of the Cosmos" on **Nova** airs Wednesdays at 8:00 p.m. beginning November 1st. The series repeats Saturdays at 10:00 p.m. beginning November 5th and Sundays at 12:00 midnight beginning November 6th.

# ANGLE OF ATTACK

## Two-part special marks the Centennial of Naval Aviation.

The triumphs and challenges of Naval aviation are chronicled in the absorbing new documentary, **Angle of Attack**. This fascinating 100-year history unfolds over the course of two hour-long episodes.

**Angle of Attack** encompasses a century of technological, strategic, and social advancements in Naval aviation—from the first wobbly gliders to modern supersonic jets, to racial integration and the introduction of women in combat. **Angle of Attack** also pays tribute to Naval aviation's visionaries, pioneers, and risk-taking aviators, past and present.

The first hour of **Angle of Attack** begins by following young men and women on their way to "earning their Wings." In a rigorous course of instruction, they learn to lift off and land a supersonic aircraft on the deck of an aircraft carrier in the middle of the ocean, still considered one of the most difficult and hazardous tasks.

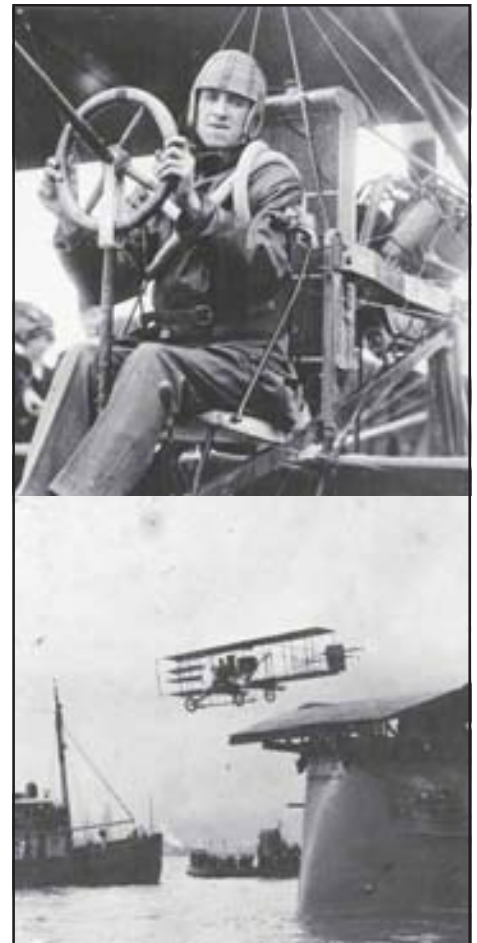
Eugene Ely first attempted the death-defying feat in 1911. Ely's act of landing a fragile bi-plane on a make-shift wooden deck would eventually transform into a weapon of unprecedented power and influence. The episode concludes with World War II and the U.S. victory in the Pacific, when carrier aviation reigned supreme.

The second hour begins with the potential demise of Naval aviation, as many in the military establishment promote nuclear weapons and pronounce carrier aviation obsolete. Korea, and later Vietnam, offer a startling reminder of the utility of Naval aviation, and undermine the post-World War II conviction that the U.S. will fight all of its wars with nuclear weapons.

As the Cold War deepens, the installation of Soviet ballistic missiles in Cuba brings the nation to the brink of nuclear war. Another important function of Naval aviation—reconnaissance—rallies world opinion and helps diffuse the crisis. Photographs of the Soviet missiles taken by low-flying Naval aviators provide incontrovertible evidence of the Soviet Union's lying.

The episode concludes by exploring the technological evolutions like GPS-guided weapons that continue to transform the field.

**Angle of Attack** airs Wednesdays at 9:00 p.m. beginning November 23rd.



Eugene Ely is shown in his flying machine.

## NAZI HUNT: ELUSIVE JUSTICE

In the aftermath of WWII, the Allies declared the Nazi party a criminal organization and pledged to prosecute and punish all those who took part in genocide and crimes against humanity. During the Nuremberg Trials, approximately 1,000 Nazi officials were convicted of crimes against humanity; but hundreds of thousands of suspected war criminals evaded prosecution—by concealing their war records, by assuming false identities; by fleeing Europe; or by serving the Allies as spies and scientists.



Nazi war criminal Kurt Lishka lived with his wife in Cologne, Germany, until he was brought to trial in the late 1970s.

**Nazi Hunt: Elusive Justice**, a new two-hour documentary, explores why governments and institutions failed to prosecute and punish mass murderers, and why certain individuals chose to pursue fugitive killers on their own.

**Nazi Hunt** profiles the men and women who took matters into their own hands and succeeded in tracking down Nazi fugitives when official institutions failed. Narrated by actress Candice Bergen, the film includes interviews with suspected war criminals, their families and defenders, as well as attorneys, survivors, military officials, and jurists.

**Nazi Hunt: Elusive Justice** airs Tuesday, November 15th at 7:00 p.m. and Sunday, November 20th at 10:00 p.m.

## The Hayloft Gang: The Story of the National Barn Dance

Narrated by Garrison Keillor, **The Hayloft Gang: The Story of the National Barn Dance** tells the story of a changing America through the lens of one of the nation's most popular country music radio shows during the 1930s and 40s: the *National Barn Dance*.



The Prairie Ramblers and Patsy Montana

Broadcast every Saturday night on WLS-AM out of Chicago, the variety show unified rural Americans with its nostalgic brand of traditional folk music and country humor, and helped define an identity for a struggling generation. From its first broadcast in 1924 to its last in 1960, the *National Barn Dance* served as a touchstone for rural citizens unsure of the future, or homesick transplants confronting the city.

The popular program launched national superstars such as Gene Autry, Patsy Montana, Bradley Kincaid, Andy Williams, George Gobel, Pat Buttram, and Lulu Belle & Scotty.

**The Hayloft Gang: The Story of the National Barn Dance** can be seen Thursday, November 3rd at 10:00 p.m.



Friends Dominic, Josh, Cole, and Mike being filmed in the woods.

## POV

### Where Soldiers Come From

It wasn't long after Dominic Fredianelli, a sensitive, artistic high school graduate in a remote town in northern Michigan, signed up for the National Guard that his buddies started following his lead. In exchange for just one weekend of training a month, they would earn a \$20,000 signing bonus and much-needed college tuition support. They knew there was a chance that they'd be sent to war sometime during their six-year stint, but, as one of the friends commented, "I figured, 'Twenty Gs, one weekend a month, let's do it!'"

Thus begins the film "Where Soldiers Come From" on **P.O.V.**, an intimate look at the young men who fight America's wars. The program follows five high school friends on a four-year journey that takes the teenagers from rural Michigan to the battlefields of Afghanistan and back home again where they must deal with Traumatic Brain Injury (TBI) and Post-Traumatic Stress Disorder (PTSD).

Many of the estimated 115,000 troops returning home with TBI (some put the number at several times that) receive little or no treatment. Even though National Guard soldiers are eligible for VA benefits, it is more difficult for them to find support since they are not on a military base like active-duty soldiers and are often in rural areas like northern Michigan.

"Where Soldiers Come From" on **P.O.V.** airs Tuesday, November 15th at 10:00 p.m.

## American MASTERS



### Woody Allen: A Documentary

Iconic writer, director, actor, comedian, and musician, Woody Allen allowed his life and creative process—from his childhood and early career through to this year's box-office smash *Midnight in Paris*—to be documented on-camera for the first time. Filmmaker Robert Weide followed the notoriously private film legend over a year and a half to create the ultimate film biography, "Woody Allen: A Documentary," a two-part film on **American Masters**.

Beginning with his first professional gigs as a teen—furnishing jokes for comics and publicists, "Woody Allen" chronicles the trajectory and longevity of Allen's career: from his work in the 1950s-60s as a TV scribe for Sid Caesar, standup comedian and frequent TV talk show guest, to a writer-director averaging one film-per-year for more than 40 years.

"Woody Allen: A Documentary" on **American Masters** airs Sunday, November 20th at 8:00 p.m. (Pt. 1) and Monday, November 21st at 8:00 p.m. (Pt. 2).



Ariel Small

### Different is the New Normal Tourette Syndrome

Tourette Syndrome (TS) is a neurobiological disorder characterized by involuntary and repetitive physical and vocal tics. Although an estimated 200,000 kids and adults in the United States suffer from Tourette's, it remains one of the nation's most publicly misunderstood disorders.

**Different is the New Normal**, a film about the stigma and difficulties surrounding Tourette's, captures the struggles, courage, and triumphs of Ariel Small, a 17-year-old boy living with the disorder. The program tracks Ariel as he struggles with the uncontrollable tics caused by Tourette's and deals with the intolerance and misperceptions of others.

Ariel crosses paths with many individuals who lead productive, fulfilling lives despite suffering from Tourette's. Among those profiled is *American Idol* contender, singer James Durbin, who was relentlessly bullied due to his tics.

**Different is the New Normal** airs Tuesday, November 22nd at 10:00 p.m.

## SMOKY—WAR DOG HERO

**Smoky—War Dog Hero** is the amazing story of a four pound, seven inch tall Yorkshire Terrier named "Smoky" and a young soldier, William A. Wynne, during World War II. In this heartwarming KENW-TV production, Wynne tells the story of how Smoky was found by an American soldier in an abandoned foxhole in the New Guinea jungle. The young soldier sold Smoky to Corporal Wynne for two Australian pounds so he could return to a poker game.

Smoky spent the rest of the war accompanying Wynne on combat flights. They both served in the South Pacific with the 5th Air Force, 26th Photo Recon Squadron. The little dog was credited with 12 combat missions and awarded eight battle stars.

At one point, engineers needed to build an airbase at Lingayen Gulf, Luzon, a crucial airfield for allied war planes. They needed to run a telegraph wire through a 70 foot long pipe that was just eight inches in diameter and as much as half filled with soil that had sifted



in at the pipe joints. Wynne tied a string, tied to a wire, to Smoky's collar and then ran to the other end of the pipe and called Smoky's name. With the dust rising around her in the narrow darkened pipe, Smoky hesitantly but courageously made her way through the pipe into Wynne's arms.

In just minutes, Smoky prevented the need to move 40 U.S. fighter and reconnaissance planes and the need for three days of digging.

When the war ended, Wynne took Smoky home with him to Cleveland. During the next 10 years, Smoky performed on dozens of television shows, in veteran's hospitals, and traveled all over the world demonstrating her remarkable skills. Today a monument in Cleveland honors Smoky as "World War II's littlest soldier and most famous war dog."

**Smoky—War Dog Hero** airs Tuesday, November 22nd at 9:00 p.m. and Sunday, November 27th at 7:00 p.m.



## Give Me the Banjo

Narrated by Steve Martin, a banjoist himself, **PBS Arts from the Blue Ridge Mountains: Give Me the Banjo** explores the roots of American music: the minstrel show, ragtime, and early jazz, blues, old-time, folk, bluegrass, and country. It is a story of America's quintessential musical instrument from its African slavery roots to the 21st century, featuring performances and commentary from contemporary folk musicians such as Pete Seeger, Earl Scruggs, Taj Mahal, Béla Fleck, and the Carolina Chocolate Drops, as well as from leading music historians, instrument builders, and collectors. Rosanne Cash is the host.

**Give Me the Banjo** airs Friday, November 4th at 9:00 p.m. and repeats Sunday, November 6th at 1:00 p.m.

## Bill T. Jones: A Good Man

**PBS Arts from Chicago: American Masters Bill T. Jones: A Good Man** chronicles the intense creative journey of Bill T. Jones—two-time Tony® Award winner for Best Choreography—as he tackles the most ambitious work of his career, the creation of *Fondly Do We Hope...Fervently Do We Pray*, an original dance-theater piece in honor of Abraham Lincoln's bicentennial. The presentation provides a window into the creative process and the creative crisis of one of our nation's most enduring, provocative artists as he explores what it means to be a good man, to be a free man, to be a citizen.

**Bill T. Jones: A Good Man** can be seen Friday, November 11th at 9:00 p.m. and Sunday, November 13th at 1:00 p.m.

## Women Who Rock

From Bessie Smith to Janis Joplin to Lady Gaga, **PBS Arts from Cleveland: Women Who Rock** vibrates with energy as it traces the indelible mark that amazing women musicians have made on America's soundtrack. Inspired by the "Women Who Rock: Vision, Passion, Power" exhibit at the Rock and Roll Hall of Fame and Museum, **Women Who Rock** reveals new insights into what it means to be female in the male-dominated world of rock and roll, while exploring how those dynamics between the sexes have changed with time. Cyndi Lauper, who performs in the program, is also the host.

**Women Who Rock** airs Friday, November 18th at 9:00 p.m. and Sunday, November 20th at 1:00 p.m.

## Il Postino with Placido Domingo

**Great Performances** presents the world premiere performance of Daniel Catan's opera **Il Postino** starring Placido Domingo as part of the **PBS Arts Fall Festival from Los Angeles**.

Based on the Academy Award-winning 1994 Italian film that became a surprise hit with audiences around the world, and also on the 1985 novel *Ardiente Paciencia* by Antonio Skármeta, **Il Postino** tells the story of a shy young postman in a tiny Italian fishing village who discovers the courage to pursue his dreams through his daily deliveries to his only customer, the esteemed Chilean poet Pablo Neruda, played by Domingo.

**Il Postino** can be seen Friday, November 25th at 9:00 p.m. and Sunday, November 27th at 1:00 p.m.

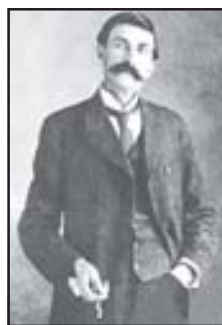
## Sheriff Pat Garrett: Killer of Billy the Kid

Mention the names of Pat Garrett and Billy the Kid in the same breath, and you bring up a controversy that has raged for over 100 years. "Killing the Kid" established Garrett's reputation, but it also haunted him the rest of his life.

**Sheriff Pat Garrett: Killer of Billy the Kid** is a unique documentary of the lawman's rise and mysterious murder. It covers Garrett's arrival in New Mexico; his marriage to a New Mexican woman; the upbringing of their children; his tumultuous professional and business career and mountainous debt; events leading to the killing of Billy the Kid; and finally Garrett's own death.

Filmed entirely on location, the program takes viewers to Ft. Sumner, Lincoln, Las Cruces, Roswell, Mesilla, and El Paso. Dramatic recreations by the New Mexico Gunfighter's Association include the depiction of the night Billy the Kid died and Garrett's own murder. Garrett was shot in the back on February 29th, 1908, while riding in a horse drawn carriage along a desolate desert road near Las Cruces.

**Sheriff Pat Garrett: Killer of Billy the Kid** airs Thursday, November 17th at 7:00 p.m. and Monday, November 28th at 9:00 p.m.



Pat Garrett

## Heirloom Meals' Thanksgiving

Cranberry-stuffed acorn squash, Brazilian cheese rolls, chipotle-spiced pumpkin pie, an innovative and tasty preparation for roast turkey—these are just some of the treasured family recipes shared by a direct descendant of the Pilgrims, a newly minted citizen, a Midwestern housewife, a Southern gentleman, an Italian grandmother, and other guests on **Heirloom Meals' Thanksgiving**. Hosted by culinary artist Carole Murko, the one-hour special also weaves together heartwarming stories to help viewers connect with their own memories of this beloved national holiday.

**Heirloom Meals' Thanksgiving** will be broadcast Saturday morning, November 19th at 8:00 a.m.



# ◆ KENW-TV's DAYTIME SCHEDULES ◆

## Kids' Programming, How-to's, and Family Viewing

3-2 (SD) is your regular KENW-TV channel. Channels 3-1 (HD) and 3-3 (SD) require a digital television or a converter box, both with antennas.

### Channel 3-2

#### Monday through Friday

6:00 am	Classical Stretch
6:30 am	BBC World News
7:00 am	Sesame Street
8:00 am	Dinosaur Train
8:30 am	Barney and Friends (MWF)
	Curious George (TuTh)
9:00 am	Super WHY!
9:30 am	Cat in the Hat
10:00 am	Sid the Science Kid
10:30 am	Hey Kids, Let's Cook! (M)
	Imagination Station (Tu)
	Angelina Ballerina (W)
	Signing Time! (Th)
	Mister Rogers (F)
11:00 am	Cook's Country from ATK (M)
	Pati's Mexican Table (Tu)
	New Fly Fisher (W)
	Woodsmith Shop (Th)
	Bob the Builder (F)
11:30 am	Savor the Southwest (M)
	Knitting Daily (Tu)
	Fly Tying: The Angler's Art (W)
	Taste of History (Th)
	Thomas & Friends (F)
12:00 pm	Sit and Be Fit (MWF)
	Creative Living (TuTh)
12:30 pm	Beads, Baubles and Jewels (M)
	Sew It All (Tu)
	Scrapbook Memories (W)
	Welcome to My Studio (Th)
	Beauty of Oil Painting (F)
1:00 pm	WordWorld
1:30 pm	Clifford the Big Red Dog
2:00 pm	Maya & Miguel (MWF)
	Martha Speaks (TuTh)
2:30 pm	Arthur
3:00 pm	Electric Company
3:30 pm	Fetch! with Ruff Ruffman
4:00 pm	Wild Kratts
4:30 pm	BBC World News
5:00 pm	Inside Washington (M)
	Scully/The World News (Tu)
	World Business (W)
	European Journal (Th)
	BBC Newsnight (F)
5:30 pm	Nightly Business Report
6:00 pm	PBS NewsHour

### Channel 3-3

#### Monday through Friday

6:00 am	Curious George
6:30 am	Cat in the Hat
7:00 am	Super WHY!
7:30 am	Dinosaur Train
8:00 am	Sesame Street
9:00 am	Sid the Science Kid
9:30 am	WordWorld
10:00 am	Martha Speaks
10:30 am	Barney & Friends
11:00 am	Caillou
11:30 am	Clifford the Big Red Dog
12:00 pm	Mister Rogers (M)
	Peep & the Big Wide World (Tu)
	Wild Animal Baby Explorers (W)
	Signing Time! (Th)
	Wunderkind Little Amadeus (F)
12:30 pm	Bob the Builder (M)
	Thomas & Friends (Tu)
	Angelina Ballerina (W)
	Enviropals! (Th)
	Hey Kids, Let's Cook! (F)
1:00 pm	Maya & Miguel
1:30 pm	Martha Speaks
2:00 pm	Arthur
2:30 pm	WordGirl
3:00 pm	Wild Kratts
3:30 pm	Electric Company
4:00 pm	Fetch! with Ruff Ruffman
4:30 pm	Thomas & Friends (M)
	Angelina Ballerina (Tu)
	Bob the Builder (W)
	Curious George (Th)
	Raggs (F)
5:00 pm	Wunderkind Little Amadeus (M)
	Wild Animal Baby Explorers (Tu)
	Peep & the Big Wide World (W)
	Hands on Crafts (Th)
	Zula Patrol (F)
5:30 pm	Anne of Green Gables (M)
	SciGirls (Tu)
	Imagination Station (W)
	Curiosity Quest (Th)
	Signing Time! (F)
6:00 pm	Cat in the Hat
6:30 pm	SuperWhy!
7:00 pm	WordWorld
7:30 pm	Electric Company
8:00 pm	Wild Kratts
8:30 pm	Fetch!

#### Saturday

6:00 AM	Super WHY!
6:30 am	Dinosaur Train
7:00 am	Thomas & Friends
7:30 am	Angelina Ballerina
8:00 am	Bob the Builder
8:30 am	Sid the Science Kid
9:00 am	Martha Speaks
9:30 am	Arthur
10:00 am	Electric Company
10:30 am	Fetch! with Ruff Ruffman
11:00 am	WordGirl
11:30 am	Cyberchase
12:00 pm	Wild Kratts
12:30 pm	Maya & Miguel
1:00 pm	Curious George
1:30 pm	Cat in the Hat
2:00 pm	Peep & the Big Wide World
2:30 pm	WordWorld
3:00 pm	Caillou
3:30 pm	Clifford the Big Red Dog
4:00 pm	Zula Patrol
4:30 pm	Hey Kids, Let's Cook!
5:00 pm	Signing Time!
5:30 pm	Wild Animal Baby Explorers
6:00 pm	Wild Kratts
6:30 pm	Fetch!
7:00 pm	Curiosity Quest
7:30 pm	SciGirls
8:00 pm	Imagination Station
8:30 pm	Electric Company

#### Sunday

6:00 am	Super WHY!
6:30 am	Dinosaur Train
7:00 am	Sid the Science Kid
7:30 am	Martha Speaks
8:00 am	Arthur
8:30 am	WordGirl
9:00 am	Wild Kratts
9:30 am	Electric Company
10:00 am	Cyberchase
10:30 am	Fetch!
11:00 am	SciGirls
11:30 am	Hands on Crafts for Kids
12:00 pm	Curiosity Quest
12:30 pm	Imagination Station
1:00 pm	Hey Kids, Let's Cook
1:30 pm	Signing Time!
2:00 pm	Wild Animal Baby Explorers
2:30 pm	Raggs
3:00 pm	Enviropals!
3:30 pm	Curious George
4:00 pm	Cat in the Hat
4:30 pm	Peep & the Big Wide World
5:00 pm	WordWorld
5:30 pm	Caillou
6:00 pm	Clifford the Big Red Dog
6:30 pm	Bob the Builder
7:00 pm	Thomas & Friends
7:30 pm	Angelina Ballerina
8:00 pm	Maya & Miguel
8:30 pm	Biz Kid\$

### Channel 3-1

#### Saturday

5:00 am	Mister Rogers
5:30 am	Bob the Builder
6:00 am	Curious George
6:30 am	Cat in the Hat
7:00 am	Super WHY!
7:30 am	Dinosaur Train
8:00 am	Thomas & Friends
8:30 am	Angelina Ballerina

#### Sunday

5:00 am	Sesame Street
6:00 am	Curious George
6:30 am	Cat in the Hat
7:00 am	Super WHY!
7:30 am	Dinosaur Train
8:00 am	Sid the Science Kid
8:30 am	Martha Speaks
9:00 am	Arthur
9:30 am	WordGirl
10:00 am	Wild Kratts
10:30 am	Electric Company
11:00 am	Cyberchase
11:30 am	Fetch! with Ruff Ruffman

# KENW TV SCHEDULES 3-1 (HD), 3-2 (SD) AND 3-3 (SD)

Our regular KENW-TV Channel (3-2) is listed below in bold. It can be seen by those who use cable or one of our analog translators listed on page 3. Schedule 3-1 is our High Definition (HD) Channel and 3-3 is our Children's/Encore Standard Definition (SD) Channel. Those with either digital TV sets or analog sets with converter boxes (both sets require antennas) can receive all three channels in most parts of our viewing area. KENW-TV has digital transmitters in the following cities: Clovis/Portales; Hobbs/Lovington; Roswell; Artesia; Fort Sumner; Tucumcari; and now Carlsbad! This service is not yet available in Ruidoso.

**KENW-TV is on DirecTV Channel 3 in most counties of New Mexico,  
both in High Definition (3-1) and Standard Definition (3-2).  
KENW-TV is also now on Dish Network Standard Definition Channel 3 (3-2).**

## Tuesday 1st

- 5:00 3-1 *BBC World News*
- 5:30 3-1 *Religion & Ethics Newsweekly*
- 6:00 3-1 *Antiques Roadshow*
- 7:00 3-1 *Oneida Speak*
- 8:00 3-1 *Catholicism*
- 9:00 3-1 *Healthy Body Healthy Mind*
- 9:30 3-1 *Religion & Ethics Newsweekly*
- 10:00 3-1 *Inner Compass*
- 10:30 3-1 *Everyday Edisons*
- 11:00 3-1 *Song of the Mountains*
- 12:00 3-1 *Antiques Roadshow*
- 1:00 3-1 *Oneida Speak*
- 2:00 3-1 *Catholicism*
- 3:00 3-1 *Music Voyager*
- 3:30 3-1 *Travel with Kids*
- 4:00 3-1 *Consuelo Mack WealthTrack*
- 4:30 3-1 *Scully/ The World Show*
- 5:00 3-1 *BBC World News America*
- 5:30 3-1 *Nightly Business Report*
- 6:00 3-1 *PBS NewsHour*
- 7:00 **American Experience** "Wyatt Earp"  
3-1 *Secrets of the Dead*
- 8:00 **Frontline** "The Anthrax Files"  
3-1 *Frontline*
- 9:00 **You Should Know**  
3-1 *Women, War & Peace*  
3-3 *Charlie Rose*
- 9:30 **Creative Living**
- 10:00 **Women, War & Peace**  
"The War We Are Living"  
3-1 *Charlie Rose*  
3-3 *Secrets of the Dead*
- 11:00 **Charlie Rose**  
3-1 *Tavis Smiley*  
3-3 *Frontline*
- 12:00 **PBS NewsHour**  
3-1 *Frontline*  
3-3 *New Environmentalists*

## Wednesday 2nd

- 5:00 3-1 *BBC World News*
- 5:30 3-1 *Healthy Body Healthy Mind*
- 6:00 3-1 *Secrets of the Dead*
- 7:00 3-1 *Frontline*
- 8:00 3-1 *New Environmentalists*
- 8:30 3-1 *Western Perspectives:  
Art & Creativity in West Texas*
- 9:00 3-1 *Smart Travels – Pacific Rim*
- 9:30 3-1 *Historic Railway Lodges of the West*
- 10:00 3-1 *Rough Cut: Woodworking*
- 10:30 3-1 *Woodturning Workshop*
- 11:00 3-1 *Renaissance of Mata Ortiz*
- 12:00 3-1 *Secrets of the Dead*
- 1:00 3-1 *Frontline*
- 2:00 3-1 *New Environmentalists*

- 2:30 3-1 *Western Perspectives:  
Art & Creativity in West Texas*
- 3:00 3-1 *Sweet Life*
- 3:30 3-1 *America's Test Kitchen*
- 4:00 3-1 *Truth About Money*
- 4:30 3-1 *McLaughlin Group*
- 5:00 3-1 *BBC World News America*
- 5:30 3-1 *Nightly Business Report*
- 6:00 3-1 *PBS NewsHour*
- 7:00 **Nature** "The Animal House"  
3-1 *Nature*
- 8:00 **Nova** "The Fabric of the Cosmos:  
What is Space?"  
3-1 *Nova*
- 9:00 **Nova** "The Elegant Universe:  
Einstein's Dream"  
3-1 *Nova*  
3-3 *Charlie Rose*
- 10:00 **Healthy Body Healthy Mind**  
"Post-Stroke Spasticity"  
3-1 *Charlie Rose*  
3-3 *Nature*
- 10:30 **This Old House**
- 11:00 **Charlie Rose**  
3-1 *Tavis Smiley*  
3-3 *Nova*
- 11:57 **Star Gazers**
- 12:00 **PBS NewsHour**  
3-1 *Nature*  
3-3 *Nova*

## Thursday 3rd

- 5:00 3-1 *BBC World News*
- 5:30 3-1 *Closer to Truth*
- 6:00 3-1 *Teaching Channel*
- 7:00 3-1 *Nature*
- 8:00 3-1 *Nova*
- 9:00 3-1 *It's Sew Easy*
- 9:30 3-1 *Quilting Arts*
- 10:00 3-1 *Scrapbook Soup*
- 10:30 3-1 *Knit & Crochet Today*
- 11:00 3-1 *Antiques Roadshow*
- 12:00 3-1 *Nature*
- 1:00 3-1 *Nova*
- 2:00 3-1 *Nova*
- 3:00 3-1 *Miller Center Forums*
- 4:00 3-1 *Closer to Truth*
- 4:30 3-1 *European Journal*
- 5:00 3-1 *BBC World News America*
- 5:30 3-1 *Nightly Business Report*
- 6:00 3-1 *PBS NewsHour*
- 7:00 **Frontline** "The Anthrax Files"  
3-1 *Antiques Roadshow*
- 8:00 **Song of the Mountains**  
3-1 *This Old House Hour*
- 9:00 **Sportslook**  
3-1 *Creative Living*  
3-3 *Charlie Rose*
- 9:30 **Red Green Show** "Historic Site"  
3-1 *You Should Know*
- 10:00 **Hayloft Gang: The Story of the  
National Barn Dance**  
3-1 *Charlie Rose*  
3-3 *Teaching Channel*

## KENW-TV on Cable Companies

KENW-TV's 3-1 (High Definition, HD) and 3-2 (Standard Definition, SD) program schedules can be seen on the following cable companies:

- Dexter: Channel 3 (SD) and Channel 470 (HD), Cable One
- Hobbs: Channel 3 (SD) and Channel 703 (HD), U.S. Cable
- Portales: Channel 3 (SD), and Channel 510 (HD), Comcast Cable
- Roswell: Channel 3 (SD), and Channel 470 (HD), Cable One

KENW-TV's 3-2 Schedule (Standard Definition, SD) can be seen on the following cable companies:

- Artesia: Channel 3, PVT
- Carlsbad: Channel 3, U.S. Cable
- Clovis: Channel 3, Suddenlink
- Dexter: Channel 3, PVT
- Eddy County South: Channel 3, U.S. Cable
- Eunice: Channel 3, U.S. Cable
- Farwell: Channel 3, Suddenlink
- Ft. Sumner: Channel 3, Reach Broadband
- Hagerman: Channel 3, PVT
- Jal: Channel 3, U.S. Cable
- Lea County: Channel 3, U.S. Cable
- Loving: Channel 3, U.S. Cable
- Lovington: Channel 3, Comcast
- Melrose: Channel 9, Reach Broadband
- Muleshoe: Channel 5, Reach Broadband
- Texico: Channel 3, Suddenlink
- Tucumcari: Channel 11, Comcast

10:30 3-3 *Travelscope*  
**11:00 Charlie Rose**  
 3-1 *Tavis Smiley*  
 3-3 *Oneida Speak*  
**12:00 PBS NewsHour**  
 3-1 *This Old House Hour*  
 3-3 *Renaissance of Mata Ortiz*

### Friday 4th

5:00 3-1 *BBC World News*  
 5:30 3-1 *P. Allen Smith's Garden Home*  
 6:00 3-1 *Song of the Mountains*  
 7:00 3-1 *Legends & Lyrics*  
 8:00 3-1 *This Old House Hour*  
 9:00 3-1 *Globe Trekker*  
 10:00 3-1 *Gary Spetz's Painting Wild Places*  
 10:30 3-1 *Paint This with Jerry Yarnell*  
 11:00 3-1 *Contrary Warrior:*  
*Adam Fortunate Eagle*  
 12:00 3-1 *Music Voyager*  
 12:30 3-1 *Bluegrass Underground*  
 1:00 3-1 *Woodsongs*  
 2:00 3-1 *This Old House Hour*  
 3:00 3-1 *Globe Trekker*  
 4:00 3-1 *P. Allen Smith's Garden Home*  
 4:30 3-1 *BBC Newsnight*  
 5:00 3-1 *BBC World News America*  
 5:30 3-1 *Nightly Business Report*  
 6:00 3-1 *PBS NewsHour*  
**7:00 Market to Market**  
 3-1 *Washington Week*  
**7:30 Consuelo Mack WealthTrack**  
 3-1 *Need to Know*  
**8:00 Washington Week**  
 3-1 *PBS Arts from the Blue Ridge Mountains: Give Me the Banjo*  
**8:30 Need to Know**  
**9:00 PBS Arts from the Blue Ridge Mountains: Give Me the Banjo**  
 3-3 *Charlie Rose*  
 10:00 3-1 *Charlie Rose*  
 3-3 *Contrary Warrior:*  
*Adam Fortunate Eagle*  
**11:00 Masterpiece Mystery!**  
 "Case Histories, Pt. 3"  
 3-1 *Tavis Smiley*  
 3-3 *History Detectives*  
 12:00 3-1 *Washington Week*  
 3-3 *Independent Lens*  
**1:00 PBS NewsHour**

### Saturday 5th

**6:00 Woodsmith Shop**  
 "Through Mortise & Tenon Projects"  
**6:30 American Woodshop**  
 "Turning Heirloom Gifts"  
**7:00 Taste of History** "Rye Coffee"  
**7:30 Bake Decorate Celebrate!**  
 "Polka Dots"  
**8:00 Cook's Country** "Roast Beef Dinner"  
**8:30 Pati's Mexican Table** "Wrapped Treats"  
**9:00 Woodturning Workshop**  
 "Cookie Cutter"  
 3-1 *This Old House Hour*  
**9:30 Motorweek**  
**10:00 P. Allen Smith's Garden Home**  
 "Mystery"  
 3-1 *Antiques Roadshow*  
**10:30 Victory Garden** "Light"  
**10:57 Star Gazers**  
**11:00 Paint This with Jerry Yarnell**  
 "Osage Prairie Summer, Pt. 1"  
 3-1 *Baking with Julia*  
**11:30 Joy of Painting**  
 "Cypress Creek"  
 3-1 *Victory Garden*

**12:00 Beauty of Oil Painting** "Moonlit Rose"  
 3-1 *This Old House*  
**12:30 Quilt in a Day** "Dora's Delight Block"  
 3-1 *This Old House*  
**1:00 Why Quilts Matter**  
 "How Quilts Have Been Viewed"  
 3-1 *Ask This Old House*  
**1:30 Quilting Arts** "Landscape Quilting"  
 3-1 *Hometime*  
**2:00 Creative Living**  
 3-1 *Woodwright's Shop*  
**2:30 Scrapbook Soup**  
 3-1 *Motorweek*  
**3:00 Hometime** "Outdoor Kitchen Island"  
 3-1 *History Detectives*  
**3:30 This Old House** "Bedford Project, Pt. 5"  
**4:00 Ask This Old House**  
 3-1 *Nature*  
**4:30 Welcome to My Studio** "Burnt Umber"  
**5:00 Sewing with Nancy** "Art Quilts, Pt. 2"  
 3-1 *Nova*  
**5:30 It's Sew Easy**  
 "Mom and Grandma Are Busy"  
**6:00 Report from Santa Fe**  
 3-1 *Antiques Roadshow*  
**6:30 America's Heartland**  
**7:00 Lawrence Welk Show**  
 "You're Never Too Young"  
 3-1 *PBS Arts from the Blue Ridge Mountains: Give Me the Banjo*  
**8:00 All Creatures Great and Small**  
 "Old Dogs, New Tricks"  
**9:00 Austin City Limits**  
 "Miranda Lambert/Jeff Bridges"  
 3-1 *Independent Lens*  
 3-3 *Lawrence Welk Show*  
**9:57 Star Gazers**  
**10:00 Nova** "The Fabric of the Cosmos:  
 What is Space?"  
 3-1 *Austin City Limits*  
 3-3 *Classic Gospel*  
**11:00 Nature** "The Animal House"  
 3-1 *Nature*  
 3-3 *Jubilee*  
**12:00 Austin City Limits**  
 3-1 *Nova*  
 3-3 *Legends & Lyrics*

### Sunday 6th

**6:00 Travelscope** "Swiss Roots"  
**6:30 Second Opinion** "Joint Replacement"  
**7:00 Antiques Roadshow** "Unique Antiques"  
**8:00 Classic Gospel**  
 "A Gospel Bluegrass Homecoming"  
**9:00 Joy of Music** "Elbe River I"  
**9:30 Joy of Music** "U.S. Naval Academy"  
**10:00 Secrets of the Dead**  
 "The World's Biggest Bomb"  
**11:00 Globe Trekker** "New Zealand 2"  
**12:00 Cultura**  
 3-1 *Need to Know*  
**12:30 America's Heartland**  
 3-1 *Washington Week*  
**1:00 PBS Arts from the Blue Ridge Mountains: Give Me the Banjo**  
 3-1 *Religion & Ethics Newsweekly*  
 1:30 3-1 *To the Contrary*  
 2:00 3-1 *This Old House Hour*  
**2:57 Star Gazers**  
**3:00 Healthy Body Healthy Mind**  
 "Triple Negative Breast Cancer"  
 3-1 *PBS Arts from the Blue Ridge Mountains: Give Me the Banjo*  
**3:30 Religion & Ethics Newsweekly**  
**4:00 Classic Gospel**  
**5:00 Inside Washington**  
 3-1 *History Detectives*

**5:30 McLaughlin Group**  
**6:00 Consuelo Mack WealthTrack**  
 3-1 *Nova*  
**6:30 Truth About Money with Ric Edelman**  
**7:00 America in Primetime**  
 "Man of the House"  
 3-1 *America in Primetime*  
**8:00 Masterpiece Contemporary**  
 "Page Eight"  
 3-1 *Masterpiece Contemporary*  
 9:00 3-3 *Smart Travels - Europe*  
 9:30 3-3 *This American Land*  
**10:00 Will Ferrell: The Mark Twain Prize**  
 3-1 *Austin City Limits*  
 3-3 *America in Primetime*  
 11:00 3-1 *America in Primetime*  
 3-3 *Masterpiece Contemporary*  
**11:30 Official Best of Fest** "Love VII"  
**11:57 Star Gazers**  
**12:00 Nova** "The Fabric of the Cosmos:  
 What is Space?"  
 3-1 *Masterpiece Contemporary*

### Monday 7th

5:00 3-1 *BBC World News*  
 5:30 3-1 *America's Heartland*  
 6:00 3-1 *America in Primetime*  
 7:00 3-1 *Masterpiece Contemporary*  
 9:00 3-1 *Savor the Southwest*  
 9:30 3-1 *America's Test Kitchen*  
 10:00 3-1 *Taste of History*  
 10:30 3-1 *Bake Decorate Celebrate!*  
 11:00 3-1 *Oneida Speak*  
 12:00 3-1 *America in Primetime*  
 1:00 3-1 *Masterpiece Contemporary*  
 3:00 3-1 *Travelscope*  
 3:30 3-1 *Painting and Travel*  
 4:00 3-1 *America's Heartland*  
 4:30 3-1 *Inside Washington*  
 5:00 3-1 *BBC World News America*  
 5:30 3-1 *Nightly Business Report*  
 6:00 3-1 *PBS NewsHour*  
**7:00 Antiques Roadshow** "Junk in the Trunk"  
 3-1 *Antiques Roadshow*  
**8:00 Antiques Roadshow** "Naughty or Nice"  
 3-1 *Antiques Roadshow*  
**9:00 Looking for Lincoln**, Pt. 1  
 3-1 *Looking for Lincoln*  
 3-3 *Charlie Rose*  
**10:00 Dinner Trains Out West**  
 3-1 *Charlie Rose*  
 3-3 *Antiques Roadshow*  
**10:27 Star Gazers**  
**10:30 Official Best of the Fest** "Friendship"  
**11:00 Antiques Roadshow**  
 3-1 *Tavis Smiley*  
 3-3 *Jefferson Davis:*  
*An American President*  
**12:00 PBS NewsHour**  
 3-1 *Looking for Lincoln, Pt. 1*

### Tuesday 8th

5:00 3-1 *BBC World News*  
 5:30 3-1 *Religion & Ethics Newsweekly*  
 6:00 3-1 *Antiques Roadshow*  
 7:00 3-1 *Jefferson Davis:*  
*An American President*  
 8:30 3-1 *Tragedy of Bataan*  
 9:00 3-1 *Healthy Body Healthy Mind*  
 9:30 3-1 *Religion & Ethics Newsweekly*  
 10:00 3-1 *Inner Compass*  
 10:30 3-1 *Everyday Edisons*  
 11:00 3-1 *Song of the Mountains*  
 12:00 3-1 *Antiques Roadshow*  
 1:00 3-1 *Jefferson Davis:*  
*An American President*

- 2:30 3-1 *Tragedy of Bataan*
- 3:00 3-1 *Music Voyager*
- 3:30 3-1 *Travel with Kids*
- 4:00 3-1 *Consuelo Mack WealthTrack*
- 4:30 3-1 *Scully/ The World Show*
- 5:00 3-1 *BBC World News America*
- 5:30 3-1 *Nightly Business Report*
- 6:00 3-1 *PBS NewsHour*
- 7:00 American Experience** "War Letters"  
3-1 *Secrets of the Dead*
- 8:00 Frontline** "Syria Undercover"  
3-1 *Frontline*
- 9:00 You Should Know**  
3-1 *Women, War & Peace*  
3-3 *Charlie Rose*
- 9:30 Creative Living**
- 10:00 Women, War & Peace** "War Redefined"  
3-1 *Charlie Rose*  
3-3 *Secrets of the Dead*
- 11:00 Charlie Rose**  
3-1 *Tavis Smiley*  
3-3 *Frontline*
- 12:00 PBS NewsHour**  
3-1 *Frontline*  
3-3 *Street Vets*

Wednesday 9th

- 5:00 3-1 *BBC World News*
- 5:30 3-1 *Healthy Body Healthy Mind*
- 6:00 3-1 *Secrets of the Dead*
- 7:00 3-1 *Frontline*
- 8:00 3-1 *Street Vets*
- 9:00 3-1 *Smart Travels – Pacific Rim*
- 9:30 3-1 *Tracks Ahead*
- 10:00 3-1 *Rough Cut: Woodworking*
- 10:30 3-1 *Woodturning Workshop*
- 11:00 3-1 *Pit*
- 12:00 3-1 *Secrets of the Dead*
- 1:00 3-1 *Frontline*
- 2:00 3-1 *Street Vets*
- 3:00 3-1 *Sweet Life*
- 3:30 3-1 *America's Test Kitchen*
- 4:00 3-1 *Truth About Money*
- 4:30 3-1 *McLaughlin Group*
- 5:00 3-1 *BBC World News America*
- 5:30 3-1 *Nightly Business Report*
- 6:00 3-1 *PBS NewsHour*
- 7:00 Nature** "Jungle Eagles"  
3-1 *Nature*
- 8:00 Nova** "The Fabric of the Cosmos:  
The Illusion of Time"  
3-1 *Nova*
- 9:00 Nova** "The Elegant Universe:  
The String's the Thing"  
3-1 *Nova*  
3-3 *Charlie Rose*
- 10:00 Healthy Body Healthy Mind**  
"Breakthroughs in Advanced Prostate  
Cancer"  
3-1 *Charlie Rose*  
3-3 *Nature*
- 10:30 This Old House**
- 11:00 Charlie Rose**  
3-1 *Tavis Smiley*  
3-3 *Nova*
- 11:57 Star Gazers**
- 12:00 PBS NewsHour**  
3-1 *Nature*  
3-3 *Nova*

Thursday 10th

- 5:00 3-1 *BBC World News*
- 5:30 3-1 *Closer to Truth*
- 6:00 3-1 *Teaching Channel*
- 7:00 3-1 *Nature*
- 8:00 3-1 *Nova*

- 9:00 3-1 *It's Sew Easy*
- 9:30 3-1 *Quilting Arts*
- 10:00 3-1 *Scrapbook Soup*
- 10:30 3-1 *Knit & Crochet Today*
- 11:00 3-1 *Antiques Roadshow*
- 12:00 3-1 *Nature*
- 1:00 3-1 *Nova*
- 2:00 3-1 *Nova*
- 3:00 3-1 *Miller Center Forums*
- 4:00 3-1 *Closer to Truth*
- 4:30 3-1 *European Journal*
- 5:00 3-1 *BBC World News America*
- 5:30 3-1 *Nightly Business Report*
- 6:00 3-1 *PBS NewsHour*
- 7:00 Frontline** "Syria Undercover"  
3-1 *Vietnam War Stories*
- 8:00 Song of the Mountains**  
3-1 *This Old House Hour*
- 9:00 Sportslook**  
3-1 *Creative Living*  
3-3 *Charlie Rose*
- 9:30 Red Green Show** "Twinning"  
3-1 *You Should Know*
- 10:00 Woodsongs**  
"Doyle Lawson and Quicksilver"  
3-1 *Charlie Rose*  
3-3 *Teaching Channel*
- 11:00 Charlie Rose**  
3-1 *Tavis Smiley*  
3-3 *Street Vets*
- 12:00 PBS NewsHour**  
3-1 *This Old House Hour*  
3-3 *Vietnam War Stories*

Friday 11th

- 5:00 3-1 *BBC World News*
- 5:30 3-1 *P. Allen Smith's Garden Home*
- 6:00 3-1 *Song of the Mountains*
- 7:00 3-1 *Legends & Lyrics*
- 8:00 3-1 *This Old House Hour*
- 9:00 3-1 *Globe Trekker*
- 10:00 3-1 *Gary Spetz's Painting Wild Places*
- 10:30 3-1 *Paint This with Jerry Yarnell*
- 11:00 3-1 *Last Mission: Establishing the Rule  
of Law in Iraq*
- 12:00 3-1 *Music Voyager*
- 12:30 3-1 *Bluegrass Underground*
- 1:00 3-1 *Woodsongs*
- 2:00 3-1 *This Old House Hour*
- 3:00 3-1 *Globe Trekker*
- 4:00 3-1 *P. Allen Smith's Garden Home*
- 4:30 3-1 *BBC Newsnight*
- 5:00 3-1 *BBC World News America*
- 5:30 3-1 *Nightly Business Report*
- 6:00 3-1 *PBS NewsHour*
- 7:00 Market to Market**  
3-1 *Washington Week*
- 7:30 Consuelo Mack WealthTrack**  
3-1 *Need to Know*
- 8:00 Washington Week**  
3-1 *PBS Arts from Chicago: Bill T. Jones*
- 8:30 Need to Know**
- 9:00 PBS Arts from Chicago:**  
**American Masters Bill T. Jones**  
3-3 *Charlie Rose*  
3-1 *Charlie Rose*  
3-3 *Pit*
- 10:30 Masterpiece Contemporary**  
"Page Eight"  
3-1 *Tavis Smiley*  
3-3 *History Detectives*
- 12:00 PBS NewsHour**  
3-1 *Washington Week*  
3-3 *Independent Lens*

- 6:00 Woodsmith Shop**  
"Pocket Screw Joinery Project"
- 6:30 American Woodshop**  
"Two Drawer Utility Chest"
- 7:00 Taste of History**  
"Dolley & James Madison"
- 7:30 Bake Decorate Celebrate!**  
"You're on a Roll"
- 8:00 Cook's Country** "Icebox Desserts"
- 8:30 Pati's Mexican Table** "Quesadillas"
- 9:00 Woodturning Workshop** "Tops"  
3-1 *This Old House Hour*
- 9:30 Motorweek**
- 10:00 P. Allen Smith's Garden Home** "Time"  
3-1 *Antiques Roadshow*
- 10:30 Victory Garden** "New"
- 10:57 Star Gazers**
- 11:00 Paint This with Jerry Yarnell**  
"Osage Prairie Summer, Pt. 2"  
3-1 *Baking with Julia*
- 11:30 Joy of Painting** "A Copper Winter"  
3-1 *Victory Garden*
- 12:00 Beauty of Oil Painting**  
"Tuscan Poppies"  
3-1 *This Old House*
- 12:30 Quilt in a Day** "North Star Block"  
3-1 *This Old House*

Fall Festival 2011  
Over \$21,000 Pledged

In the last three years, many PBS stations have faced financial hardships. Such developments not only give one pause, they emphasize the importance of successful membership drives.

When one asks, what is the difference between a week *with* a membership drive and a week *without* a membership drive, the answer is about \$21,000 crucial dollars. That's the amount you and viewers like you pledged during our recent **Fall Festival 2011**. Once again, it's a case of so few doing so much for so many. And even though it is impossible to thank you enough, thank you.

And thank you to our volunteers who repeatedly go above and beyond to insure that public television continues in their neighborhoods and yours.

**BREAK HOSTS**

Don Criss  
Kathy Durand Gore

**TELEPHONE VOLUNTEERS**

Adele Breech	Fred Patterson
Jo Nell Brooks	Dale Streeter
Joan Brown	Robin Streeter
Emily Brown	Linda Uttaro
Janine Elder	Robin Wells
Ira Kaye Frashier	Bill Wood
Linda Hamrick	Ruth Wood

Rena Garrett  
Development/Promotion Director

**1:00 Why Quilts Matter** "Empowering Women One Quilt at a Time"  
3-1 *Ask This Old House*

**1:30 Quilting Arts** "Outlandish Quilts"  
3-1 *Hometime*

**2:00 Creative Living**  
3-1 *Woodwright's Shop*

**2:30 Scrapbook Soup**  
3-1 *Motorweek*

**3:00 Hometime** "Built-in Grill"  
3-1 *History Detectives*

**3:30 This Old House** "Bedford Project, Pt. 6"

**4:00 Ask This Old House**  
3-1 *Nature*

**4:30 Welcome to My Studio** "Burnt Sienna"

**5:00 Sewing with Nancy**  
"Grandmother's One-Patch Quilt"  
3-1 *Nova*

**5:30 Sew it All** "Fabric Wall Art"

**6:00 Report from Santa Fe**  
3-1 *Antiques Roadshow*

**6:30 America's Heartland**

**7:00 Lawrence Welk Show**  
"Tribute to Fred Astaire"  
3-1 *PBS Arts from Chicago*

**8:00 All Creatures Great and Small**  
"Hampered"

**9:00 Austin City Limits** "Randy Newman"  
3-1 *Vietnam War Stories*  
3-3 *Lawrence Welk Show*

**9:57 Star Gazers**

**10:00 Nova** "The Fabric of the Cosmos: The Illusion of Time"  
3-1 *Austin City Limits*  
3-3 *Classic Gospel*

**11:00 Nature** "Jungle Eagles"  
3-1 *Nature*  
3-3 *Jubilee*

**12:00 Austin City Limits**  
3-1 *Nova*  
3-3 *Legends & Lyrics*

## Sunday 13th

**6:00 Travelscope**  
"New Brunswick's Acadian Festival"

**6:30 Second Opinion** "Metabolic Syndrome"

**7:00 Antiques Roadshow** "Naughty or Nice"

**8:00 Classic Gospel**  
"A Gospel Bluegrass Homecoming"

**9:00 Joy of Music**  
"Musical Visit to Cracow, Poland"

**9:30 Joy of Music** "U.S. Air Force Academy"

**10:00 Secrets of the Dead**  
"Japanese SuperSub"

**11:00 Globe Trekker Special**  
"World War II in the Pacific"

**12:00 Aviators**  
3-1 *Need to Know*

**12:30 America's Heartland**  
3-1 *Washington Week*

**1:00 PBS Arts from Chicago: American Masters Bill T. Jones**  
3-1 *Religion & Ethics Newsweekly*

1:30 3-1 *To the Contrary*

2:00 3-1 *This Old House Hour*

**2:30 Field Trip!** "Pistachios"

**2:57 Star Gazers**

**3:00 Healthy Body Healthy Mind**  
"Chronic Myeloid Leukemia"  
3-1 *PBS Arts from Chicago*

**3:30 Religion & Ethics Newsweekly**

**4:00 Classic Gospel**

**5:00 Inside Washington**  
3-1 *History Detectives*

**5:30 McLaughlin Group**

**6:00 Consuelo Mack WealthTrack**  
3-1 *Nova*

**6:30 Truth About Money with Ric Edelman**

**7:00 America in Primetime** "The Misfit"  
3-1 *America in Primetime*

**8:00 Masterpiece Contemporary**  
"The Song of Lunch"  
3-1 *Masterpiece Contemporary*

**9:00 American Experience** "Donner Party"  
3-1 *Great Performances*  
3-3 *Smart Travels – Europe*

9:30 3-3 *This American Land*

10:00 3-3 *America in Primetime*

**10:30 Great Performances**  
"Placido Domingo My Favorite Roles"  
3-1 *Hayloft Gang: The Story of the National Barn Dance*  
3-3 *Masterpiece Contemporary*

11:30 3-1 *America in Primetime*

**11:57 Star Gazers**

**12:00 Nova** "The Fabric of the Cosmos: The Illusion of Time"  
3-3 *Speaking in Tongues*

## Monday 14th

5:00 3-1 *BBC World News*

5:30 3-1 *America's Heartland*

6:00 3-1 *America in Primetime*

7:00 3-1 *Masterpiece Contemporary*

8:00 3-1 *Renaissance of Mata Ortiz*

9:00 3-1 *Savor the Southwest*

9:30 3-1 *America's Test Kitchen*

10:00 3-1 *Taste of History*

10:30 3-1 *Bake Decorate Celebrate!*

11:00 3-1 *Street Vets*

12:00 3-1 *America in Primetime*

1:00 3-1 *Masterpiece Contemporary*

2:00 3-1 *Renaissance of Mata Ortiz*

3:00 3-1 *Travelscope*

3:30 3-1 *Painting and Travel*

4:00 3-1 *America's Heartland*

4:30 3-1 *Inside Washington*

5:00 3-1 *BBC World News America*

5:30 3-1 *Nightly Business Report*

6:00 3-1 *PBS NewsHour*

**7:00 Antiques Roadshow**  
"Tasty Treasures"  
3-1 *Antiques Roadshow*

**8:00 Antiques Roadshow**  
"Simply the Best"  
3-1 *Antiques Roadshow*

**9:00 Looking for Lincoln, Pt. 2**  
3-1 *Looking for Lincoln, Pt. 2*  
3-3 *Charlie Rose*

**10:00 Narrow Gauge Steam in the Rockies**  
3-1 *Charlie Rose*  
3-3 *Antiques Roadshow*

**10:27 Star Gazers**

**10:30 Official Best of the Fest** "Laughs"

**11:00 Antiques Roadshow**  
3-1 *Tavis Smiley*  
3-3 *POV*

**12:00 PBS NewsHour**  
3-1 *Looking for Lincoln, Pt. 2*

## Tuesday 15th

5:00 3-1 *BBC World News*

5:30 3-1 *Religion & Ethics Newsweekly*

6:00 3-1 *Antiques Roadshow*

7:00 3-1 *POV*

8:30 3-1 *Salud Sin Barreras Health Without Barriers*

9:00 3-1 *Healthy Body Healthy Mind*

9:30 3-1 *Religion & Ethics Newsweekly*

10:00 3-1 *Inner Compass*

10:30 3-1 *Everyday Edisons*

11:00 3-1 *Song of the Mountains*

12:00 3-1 *Antiques Roadshow*

1:00 3-1 *POV*

2:30 3-1 *Salud Sin Barreras Health Without Barriers*

3:00 3-1 *Music Voyager*

3:30 3-1 *Travel with Kids*

4:00 3-1 *Consuelo Mack WealthTrack*

4:30 3-1 *Scully/ The World Show*

5:00 3-1 *BBC World News America*

5:30 3-1 *Nightly Business Report*

6:00 3-1 *PBS NewsHour*

**7:00 Nazi Hunt: Elusive Justice**  
3-1 *Secrets of the Dead*

8:00 3-1 *Nazi Hunt: Elusive Justice*

**9:00 You Should Know**  
3-3 *Charlie Rose*

**9:30 Creative Living**

**10:00 POV** "Where Soldiers Come From"  
3-1 *Charlie Rose*  
3-3 *Secrets of the Dead*

11:00 3-1 *Tavis Smiley*  
3-3 *Nazi Hunt: Elusive Justice*

**11:30 Charlie Rose**

12:00 3-1 *Nazi Hunt: Elusive Justice*

**12:30 PBS NewsHour**

## Wednesday 16th

5:00 3-1 *BBC World News*

5:30 3-1 *Healthy Body Healthy Mind*

6:00 3-1 *Secrets of the Dead*

7:00 3-1 *Independent Lens*

8:00 3-1 *Independent Lens*

9:00 3-1 *Smart Travels – Pacific Rim*

9:30 3-1 *America and the Passenger Train*

10:00 3-1 *Rough Cut: Woodworking*

10:30 3-1 *Woodturning Workshop*

11:00 3-1 *Smokin' Fish*

12:00 3-1 *Secrets of the Dead*

1:00 3-1 *Independent Lens*

2:00 3-1 *Independent Lens*

3:00 3-1 *Sweet Life*

3:30 3-1 *America's Test Kitchen*

4:00 3-1 *Truth About Money*

4:30 3-1 *McLaughlin Group*

5:00 3-1 *BBC World News America*

5:30 3-1 *Nightly Business Report*

6:00 3-1 *PBS NewsHour*

**7:00 Nature** "My Life as a Turkey"  
3-1 *Nature*

**8:00 Nova** "The Fabric of the Cosmos: Quantum Leap"  
3-1 *Nova*

**9:00 Nova** "The Elegant Universe: Welcome to the 11th Dimension"  
3-1 *Nova*  
3-3 *Charlie Rose*

**10:00 Healthy Body Healthy Mind**  
"Type 2 Diabetes: New Hope"  
3-1 *Charlie Rose*  
3-3 *Nature*

**10:30 This Old House**

**11:00 Charlie Rose**  
3-1 *Tavis Smiley*  
3-3 *Nova*

**11:57 Star Gazers**

**12:00 PBS NewsHour**  
3-1 *Nature*  
3-3 *Nova*

## Thursday 17th

5:00 3-1 *BBC World News*

5:30 3-1 *Closer to Truth*

6:00 3-1 *Teaching Channel*

7:00 3-1 *Nature*

8:00 3-1 *Nova*

- 9:00 3-1 *It's Sew Easy*
- 9:30 3-1 *Quilting Arts*
- 10:00 3-1 *Scrapbook Soup*
- 10:30 3-1 *Knit & Crochet Today*
- 11:00 3-1 *Antiques Roadshow*
- 12:00 3-1 *Nature*
- 1:00 3-1 *Nova*
- 2:00 3-1 *Nova*
- 3:00 3-1 *Miller Center Forums*
- 4:00 3-1 *Closer to Truth*
- 4:30 3-1 *European Journal*
- 5:00 3-1 *BBC World News America*
- 5:30 3-1 *Nightly Business Report*
- 6:00 3-1 *PBS NewsHour*
- 7:00 **Sheriff Pat Garrett: Killer of Billy the Kid**  
3-1 *Antiques Roadshow*
- 8:00 **Song of the Mountains**  
3-1 *This Old House Hour*
- 9:00 **Sportslook**  
3-1 *Creative Living*  
3-3 *Charlie Rose*
- 9:30 **Red Green Show "Lunar Eclipse"**  
3-1 *You Should Know*
- 10:00 **Woodsongs**  
"Unusual Instruments Show"  
3-1 *Charlie Rose*  
3-3 *Teaching Channel*
- 11:00 **Charlie Rose**  
3-1 *Tavis Smiley*  
3-3 *Smokin' Fish*
- 12:00 **PBS NewsHour**  
3-1 *This Old House Hour*  
3-3 *Contrary Warrior: Adam Fortunate Eagle*

Friday 18th

- 5:00 3-1 *BBC World News*
- 5:30 3-1 *P. Allen Smith's Garden Home*
- 6:00 3-1 *Song of the Mountains*
- 7:00 3-1 *Legends & Lyrics*
- 8:00 3-1 *This Old House Hour*
- 9:00 3-1 *Globe Trekker*
- 10:00 3-1 *Gary Spetz's Painting Wild Places*
- 10:30 3-1 *Paint This with Jerry Yarnell*
- 11:00 3-1 *Preemie*
- 12:00 3-1 *Music Voyager*
- 12:30 3-1 *Bluegrass Underground*
- 1:00 3-1 *Woodsongs*
- 2:00 3-1 *This Old House Hour*
- 3:00 3-1 *Globe Trekker*
- 4:00 3-1 *P. Allen Smith's Garden Home*
- 4:30 3-1 *BBC Newsnight*
- 5:00 3-1 *BBC World News America*
- 5:30 3-1 *Nightly Business Report*
- 6:00 3-1 *PBS NewsHour*
- 7:00 **Market to Market**  
3-1 *Washington Week*
- 7:30 **Consuelo Mack WealthTrack**  
3-1 *Need to Know*
- 8:00 **Washington Week**  
3-1 *PBS Arts from Cleveland*
- 8:30 **Need to Know**
- 9:00 **PBS Arts from Cleveland: Women Who Rock**  
3-3 *Charlie Rose*  
3-1 *Salud Sin Barreras Health*
- 10:00 **Masterpiece Contemporary**  
"The Song of Lunch"  
3-1 *Charlie Rose*  
3-3 *Oneida Speak*
- 11:00 **Google World**  
3-1 *Tavis Smiley*  
3-3 *History Detectives*
- 12:00 **PBS NewsHour**  
3-1 *Washington Week*  
3-3 *Independent Lens*

- 6:00 **Woodsmith Shop** "Shop Storage Cart"
- 6:30 **American Woodshop** "Turned Boxes"
- 7:00 **Taste of History**  
"Dolley & James Madison, Pt. 2"
- 7:30 **Bake Decorate Celebrate!**  
"Asian Influence"
- 8:00 **Heirloom Meals' Thanksgiving**
- 9:00 **Woodturning Workshop** "Walnut Goblet"  
3-1 *This Old House Hour*
- 9:30 **Motorweek**
- 10:00 **P. Allen Smith's Garden Home**  
"Dazzling Daffodils"  
3-1 *Antiques Roadshow*
- 10:30 **Victory Garden "Old"**
- 10:57 **Star Gazers**
- 11:00 **Paint This with Jerry Yarnell**  
"Osage Prairie Summer, Pt. 3"  
3-1 *Baking with Julia*
- 11:30 **Joy of Painting** "Home Before Nightfall"  
3-1 *Victory Garden*
- 12:00 **Beauty of Oil Painting**  
"Pastel Poppy Bouquet"  
3-1 *This Old House*
- 12:30 **Quilt in a Day**  
"Harvest Star Wallhanging"  
3-1 *This Old House*
- 1:00 **Why Quilts Matter**  
"Quilt Nation: 20,000,000 and Counting!"  
3-1 *Ask This Old House*
- 1:30 **Fons & Porter's Love of Quilting**  
"Star of Bethlehem, Pt. 1"  
3-1 *Hometime*
- 2:00 **Creative Living**  
3-1 *Woodwright's Shop*
- 2:30 **Scrapbook Soup**  
3-1 *Motorweek*
- 3:00 **Hometime** "Mailbox and Flower Box"  
3-1 *History Detectives*
- 3:30 **This Old House** "Bedford Project, Pt. 7"
- 4:00 **Ask This Old House**  
3-1 *Nature*
- 4:30 **Welcome to My Studio**  
"A Basic 1-2-3 Approach"
- 5:00 **Sewing with Nancy**  
"Grandmother's One-Patch Quilt, Pt. 2"  
3-1 *Nova*
- 5:30 **Sew it All** "Awesome Aprons"
- 6:00 **Report from Santa Fe**  
3-1 *Antiques Roadshow*
- 6:30 **America's Heartland**
- 7:00 **Lawrence Welk Show** "Thanksgiving"  
3-1 *PBS Arts from Cleveland: Women Who Rock*
- 8:00 **All Creatures Great and Small**  
"Promises to Keep"  
8:30 3-1 *In Performance at the White House*
- 9:00 **Austin City Limits Presents: Americana Festival**  
3-3 *Lawrence Welk Show*
- 9:30 3-1 *Ribbon of Sand*
- 9:57 **Star Gazers**
- 10:00 **Nova** "The Fabric of the Cosmos: Quantum Leap"  
3-1 *Austin City Limits Presents: Americana Festival*  
3-3 *Classic Gospel*
- 11:00 **Nature** "My Life as a Turkey"  
3-1 *Nature*  
3-3 *Jubilee*
- 12:00 **Austin City Limits Presents: Americana Festival**  
3-1 *Nova*  
3-3 *Legends & Lyrics*

- 6:00 **Travelscope**  
"Germany's Winter Carnival"
- 6:30 **Second Opinion**  
"Women's Cardiac Health"
- 7:00 **Antiques Roadshow** "Simply the Best"
- 8:00 **Classic Gospel** "The Best of the Isaacs"
- 9:00 **Joy of Music** "U.S. Military Academy"
- 9:30 **Joy of Music**  
"Words and Music of Thanksgiving"
- 10:00 **Secrets of the Dead**  
"Churchill's Deadly Decision"
- 11:00 **Globe Trekker** "Texas"
- 12:00 **Cultura**  
3-1 *Need to Know*
- 12:30 **Thanksgiving Blessings with Mormon Tabernacle Choir**  
3-1 *Washington Week*
- 1:00 **PBS Arts from Cleveland: Women Who Rock**  
3-1 *Religion & Ethics Newsweekly*  
1:30 3-1 *To the Contrary*
- 2:00 **Closer to Truth** "Fallacies of 'Proving' God Exists"  
3-1 *This Old House Hour*
- 2:30 **Field Trip!** "Onions"
- 2:57 **Star Gazers**
- 3:00 **Healthy Body Healthy Mind**  
"Hereditary Angioedema"  
3-1 *PBS Arts from Cleveland: Women Who Rock*
- 3:30 **Religion & Ethics Newsweekly**
- 4:00 **Classic Gospel**  
4:30 3-1 *In Performance at the White House*
- 5:00 **Inside Washington**  
5:30 3-1 *Fort Niagara: The Struggle for a Continent*
- 5:30 **McLaughlin Group**
- 6:00 **Consuelo Mack WealthTrack**  
3-1 *Nova*
- 6:30 **Thanksgiving Blessings with Mormon Tabernacle Choir**
- 7:00 **America in Primetime** "The Crusader"  
3-1 *America in Primetime*
- 8:00 **American Masters** "Woody Allen," Pt. 1  
3-1 *American Masters "Woody Allen," Pt. 1*  
9:00 3-3 *Smart Travels - Europe*  
9:30 3-3 *This American Land*
- 10:00 **Nazi Hunt: Elusive Justice**  
3-1 *Austin City Limits Presents: Americana Festival*  
3-3 *America in Primetime*
- 11:00 3-1 *America in Primetime*  
3-3 *American Masters "Woody Allen," Pt. 1*
- 11:57 **Star Gazers**
- 12:00 **Nova** "The Fabric of the Cosmos: Quantum Leap"  
3-1 *American Masters "Woody Allen," Pt. 1*

Monday 21st

- 5:00 3-1 *BBC World News*
- 5:30 3-1 *America's Heartland*
- 6:00 3-1 *America in Primetime*
- 7:00 3-1 *American Masters "Woody Allen," Pt. 1*
- 9:00 3-1 *Savor the Southwest*
- 9:30 3-1 *America's Test Kitchen*
- 10:00 3-1 *Taste of History*
- 10:30 3-1 *Bake Decorate Celebrate!*
- 11:00 3-1 *Walking into the Unknown*
- 12:00 3-1 *America in Primetime*

1:00 3-1 *American Masters* "Woody Allen," Pt. 1  
 3:00 3-1 *Travelscope*  
 3:30 3-1 *Painting and Travel*  
 4:00 3-1 *America's Heartland*  
 4:30 3-1 *Inside Washington*  
 5:00 3-1 *BBC World News America*  
 5:30 3-1 *Nightly Business Report*  
 6:00 3-1 *PBS NewsHour*  
 7:00 **Antiques Roadshow**  
 "Atlantic City, NJ, Pt. 3"  
 3-1 *Antiques Roadshow*  
 8:00 **American Masters** "Woody Allen," Pt. 2  
 3-1 *American Masters* "Woody Allen," Pt. 2  
 9:00 3-3 *Charlie Rose*  
 9:30 **Secrets in America:**  
**The Crisis of Elder Abuse**  
 3-1 *Default: Student Loan Documentary*  
 10:00 **Northwest Rail Adventures**  
 3-1 *Charlie Rose*  
 3-3 *Antiques Roadshow*  
 10:57 **Star Gazers**  
 11:00 **Antiques Roadshow**  
 3-1 *Tavis Smiley*  
 3-3 *American Masters* "Woody Allen," Pt. 2  
 12:00 **PBS NewsHour**  
 3-1 *American Masters* "Woody Allen," Pt. 1

## Tuesday 22nd

5:00 3-1 *BBC World News*  
 5:30 3-1 *Religion & Ethics Newsweekly*  
 6:00 3-1 *Antiques Roadshow*  
 7:00 3-1 *Woody Allen, Pt. 2*  
 8:30 3-1 *Default: The Student Loan Documentary*  
 9:00 3-1 *Healthy Body Healthy Mind*  
 9:30 3-1 *Religion & Ethics Newsweekly*  
 10:00 3-1 *Inner Compass*  
 10:30 3-1 *Everyday Edisons*  
 11:00 3-1 *Song of the Mountains*  
 12:00 3-1 *Antiques Roadshow*  
 1:00 3-1 *Woody Allen, Pt. 2*  
 2:30 3-1 *Default: The Student Loan Documentary*  
 3:00 3-1 *Music Voyager*  
 3:30 3-1 *Travel with Kids*  
 4:00 3-1 *Consuelo Mack WealthTrack*  
 4:30 3-1 *Scully/ The World Show*  
 5:00 3-1 *BBC World News America*  
 5:30 3-1 *Nightly Business Report*  
 6:00 3-1 *PBS NewsHour*  
 7:00 **American Experience**  
 "Greeley Expedition"  
 3-1 *Secrets of the Dead*  
 8:00 **Frontline** "A Perfect Terrorist"  
 3-1 *Frontline*  
 9:00 **Smoky - War Dog Hero**  
 3-1 *Secrets of the Dead*  
 3-3 *Charlie Rose*  
 9:30 **Creative Living**  
 10:00 **Different is the New Normal**  
 3-1 *Charlie Rose*  
 3-3 *Secrets of the Dead*  
 11:00 **Charlie Rose**  
 3-1 *Tavis Smiley*  
 3-3 *Frontline*  
 12:00 **PBS NewsHour**  
 3-1 *Frontline*  
 3-3 *Alzheimer's Disease: Facing the Facts*

## Wednesday 23rd

5:00 3-1 *BBC World News*  
 5:30 3-1 *Healthy Body Healthy Mind*  
 6:00 3-1 *Secrets of the Dead*  
 7:00 3-1 *Frontline*  
 8:00 3-1 *Alzheimer's Disease: Facing the Facts*  
 9:00 3-1 *Smart Travels - Pacific Rim*  
 9:30 3-1 *Tracks Ahead*  
 10:00 3-1 *Rough Cut: Woodworking*  
 10:30 3-1 *Woodturning Workshop*  
 11:00 3-1 *Joy of Stats*  
 12:00 3-1 *Secrets of the Dead*  
 1:00 3-1 *Frontline*  
 2:00 3-1 *Alzheimer's Disease: Facing the Facts*  
 3:00 3-1 *Sweet Life*  
 3:30 3-1 *America's Test Kitchen*  
 4:00 3-1 *Truth About Money*  
 4:30 3-1 *McLaughlin Group*  
 5:00 3-1 *BBC World News America*  
 5:30 3-1 *Nightly Business Report*  
 6:00 3-1 *PBS NewsHour*  
 7:00 **In Performance at the White House**  
 "Country Music"  
 3-1 *Nature*  
 8:00 **Nova** "The Fabric of the Cosmos: Universe or Multiverse?"  
 3-1 *Nova*  
 9:00 **Angle of Attack, Pt. 1**  
 3-1 *400 Years of the Telescope*  
 3-3 *Charlie Rose*  
 10:00 **Healthy Body Healthy Mind**  
 "Understanding Ulcerative Colitis"  
 3-1 *Charlie Rose*  
 3-3 *Nature*  
 10:30 **This Old House**  
 11:00 **Charlie Rose**  
 3-1 *Tavis Smiley*  
 3-3 *Nova*  
 11:57 **Star Gazers**  
 12:00 **PBS NewsHour**  
 3-1 *Nature*  
 3-3 *Last Mission: Establishing the Rule of Law in Iraq*

## Thursday 24th

5:00 3-1 *BBC World News*  
 5:30 3-1 *Closer to Truth*  
 6:00 3-1 *Teaching Channel*  
 7:00 3-1 *Nature*  
 8:00 3-1 *Nova*  
 9:00 3-1 *It's Sew Easy*  
 9:30 3-1 *Quilting Arts*  
 10:00 3-1 *Scrapbook Soup*  
 10:30 3-1 *Knit & Crochet Today*  
 11:00 3-1 *Antiques Roadshow*  
 12:00 3-1 *Nature*  
 1:00 3-1 *Nova*  
 2:00 3-1 *Looking Toward Home*  
 3:00 3-1 *Miller Center Forums*  
 4:00 3-1 *Closer to Truth*  
 4:30 3-1 *European Journal*  
 5:00 3-1 *BBC World News America*  
 5:30 3-1 *Nightly Business Report*  
 6:00 3-1 *PBS NewsHour*  
 7:00 **Frontline** "A Perfect Terrorist"  
 3-1 *Antiques Roadshow*  
 8:00 **Song of the Mountains**  
 3-1 *This Old House Hour*  
 9:00 **Thanksgiving Blessings with Mormon Tabernacle Choir**  
 3-1 *Creative Living*  
 3-3 *Charlie Rose*

9:30 **Red Green Show** "Barter Starter"  
 3-1 *You Should Know*  
 10:00 **Woodsongs**  
 "Rhonda Vincent/Gene Watson"  
 3-1 *Charlie Rose*  
 3-3 *Teaching Channel*  
 11:00 **Charlie Rose**  
 3-1 *Tavis Smiley*  
 3-3 *George Carlin: The Mark Twain Prize*  
 12:00 **PBS NewsHour**  
 3-1 *This Old House Hour*

## Friday 25th

5:00 3-1 *BBC World News*  
 5:30 3-1 *P. Allen Smith's Garden Home*  
 6:00 3-1 *Song of the Mountains*  
 7:00 3-1 *Legends & Lyrics*  
 8:00 3-1 *This Old House Hour*  
 9:00 3-1 *Globe Trekker*  
 10:00 3-1 *Gary Spetz's Painting Wild Places*  
 10:30 3-1 *Paint This with Jerry Yarnell*  
 11:00 3-1 *Speaking in Tongues*  
 12:00 3-1 *Music Voyager*  
 12:30 3-1 *Bluegrass Underground*  
 1:00 3-1 *Woodsongs*  
 2:00 3-1 *This Old House Hour*  
 3:00 3-1 *Globe Trekker*  
 4:00 3-1 *P. Allen Smith's Garden Home*  
 4:30 3-1 *BBC Newsnight*  
 5:00 3-1 *BBC World News America*  
 5:30 3-1 *Nightly Business Report*  
 6:00 3-1 *PBS NewsHour*  
 7:00 **Market to Market**  
 3-1 *Washington Week*  
 7:30 **Consuelo Mack WealthTrack**  
 3-1 *Need to Know*  
 8:00 **Washington Week**  
 3-1 *PBS Arts from Los Angeles*  
 8:30 **Need to Know**  
 9:00 **PBS Arts from Los Angeles: II Postino from LA Opera**  
 3-3 *Charlie Rose*  
 10:00 3-3 *Joy of Stats*  
 10:30 3-1 *Whisper: Silent Crisis of Ovarian Cancer*  
 11:00 3-1 *Tavis Smiley*  
 3-3 *History Detectives*  
 11:30 **Reverence: Life in the Ballet**  
 12:00 **PBS NewsHour**  
 3-1 *Washington Week*  
 3-3 *Independent Lens*

## Saturday 26th

6:00 **Woodsmith Shop** "Classic Wall Mirror"  
 6:30 **American Woodshop**  
 "Shaker Inspired Wall Cabinet"  
 7:00 **Taste of History** "Philadelphia Falls"  
 7:30 **Baking Made Easy**  
 "Stuffed Brownies and Buzzed Blondies"  
 8:00 **Cook's Country** "Fancy Chicken"  
 8:30 **Pati's Mexican Table** "Quesadillas"  
 9:00 **Woodturning Workshop**  
 "Harvesting Wood"  
 3-1 *This Old House Hour*  
 9:30 **Motorweek**  
 10:00 **P. Allen Smith's Garden Home**  
 "Vegetable Delight"  
 3-1 *Antiques Roadshow*  
 10:30 **Victory Garden** "Hybrid I"  
 10:57 **Star Gazers**  
 11:00 **Paint This with Jerry Yarnell**  
 "Osage Prairie Summer, Pt. 4"  
 3-1 *Baking with Julia*  
 11:30 **Joy of Painting**

3-1 *Victory Garden*  
**12:00 Beauty of Oil Painting**  
 "Peonies and Roses"  
 3-1 *This Old House*  
**12:30 Quilt in a Day**  
 "Sewing Quilt Top Together"  
 3-1 *This Old House*  
**1:00 Why Quilts Matter**  
 "Quilt Scholarship: Romance and Reality"  
 3-1 *Ask This Old House*  
**1:30 Fons & Porter's Love of Quilting**  
 "Star of Bethlehem, Pt. 2"  
 3-1 *Hometime*  
**2:00 Creative Living**  
 3-1 *Woodwright's Shop*  
**2:30 Scrapbook Soup**  
 3-1 *Motorweek*  
**3:00 Hometime** "Cottage Style Expressions"  
 3-1 *History Detectives*  
**3:30 This Old House** "Bedford Project, Pt. 8"  
**4:00 Ask This Old House**  
 3-1 *PBS Arts from Los Angeles*  
**4:30 Welcome to My Studio**  
 "Painting with Only Three Colors"  
**5:00 Sewing with Nancy**  
 "Upcycled Shirts, Pt. 1"  
**5:30 Sew it All** "Smart Storage"  
**6:00 Report from Santa Fe**  
**6:30 America's Heartland**  
 3-1 *American Masters* "Woody Allen,"  
 Pt. 1  
**7:00 Lawrence Welk Show**  
 "Youman's Salute"  
**8:00 All Creatures Great and Small** "1990"  
 8:30 3-1 *American Masters* "Woody Allen,"  
 Pt. 2  
**9:30 Austin City Limits** "Monsters of Folk"  
 3-3 *Lawrence Welk Show*  
**10:27 Star Gazers**  
**10:30 Nova** "The Fabric of the Cosmos:  
 Universe or Multiverse?"  
 3-1 *Austin City Limits*  
 3-3 *Classic Gospel*  
**11:30 Nature** "American Eagle"  
 3-1 *Nature*  
 3-3 *Jubilee*  
**12:30 Austin City Limits**  
 3-1 *Nova*  
 3-3 *Legends & Lyrics*

## Sunday 27th

**6:00 Travelscope** "Thailand"  
**6:30 Second Opinion** "Lower Back Pain"  
**7:00 Antiques Roadshow**  
 "Atlantic City, NJ, Pt. 3"  
**8:00 Classic Gospel**  
 "A Billy Graham Music Homecoming"  
**9:00 Joy of Music** "Elbe River II"  
**9:30 Joy of Music** "Holy, Holy, Holy"  
**10:00 Secrets of the Dead**  
 "Deadliest Battle"  
**11:00 Globe Trekker** "Papua New Guinea"  
**12:00 Aviators**  
 3-1 *Curious George (The Movie)*  
**12:30 America's Heartland**  
**1:00 PBS Arts from Los Angeles:**  
**Il Postino from LA Opera**  
 1:30 3-1 *Curious George Follow that Monkey*  
 3:00 3-1 *Curious George:*  
*A Very Monkey Christmas*  
**3:30 Religion & Ethics Newsweekly**  
**4:00 Classic Gospel**  
 3-1 *Need to Know*  
 4:30 3-1 *Washington Week*  
**5:00 Inside Washington**  
 3-1 *Religion & Ethics Newsweekly*

**5:30 McLaughlin Group**  
 3-1 *To the Contrary*  
**6:00 Consuelo Mack WealthTrack**  
 3-1 *Nova*  
**6:30 Truth About Money with Ric Edelman**  
**7:00 Smoky-War Dog Hero**  
 3-1 *Nature*  
**8:00 Masterpiece Contemporary** "Framed"  
 3-1 *Masterpiece Contemporary*  
 9:00 3-3 *Smart Travels – Europe*  
**9:30 In Performance at the White House**  
 "Country Music"  
 3-1 *Smitten*  
 3-3 *This American Land*  
 10:00 3-1 *Austin City Limits*  
 3-3 *Preemie*  
**10:30 Google World**  
 11:00 3-1 *Nature*  
 3-3 *Masterpiece Contemporary*  
**11:30 Official Best of Fest** "Love IX"  
**11:57 Star Gazers**  
**12:00 Nova** "The Fabric of the Cosmos:  
 Universe or Multiverse?"  
 3-1 *Masterpiece Contemporary*

## Monday 28th

5:00 3-1 *BBC World News*  
 5:30 3-1 *America's Heartland*  
 6:00 3-1 *Do No Harm*  
 7:00 3-1 *Masterpiece Contemporary*  
 8:30 3-1 *Elizabeth Winthrop:*  
*All the Days of Her Life*  
 9:00 3-1 *Savor the Southwest*  
 9:30 3-1 *America's Test Kitchen*  
 10:00 3-1 *Taste of History*  
 10:30 3-1 *Bake Decorate Celebrate!*  
 11:00 3-1 *Music of Your Life*  
 12:00 3-1 *Do No Harm*  
 1:00 3-1 *Masterpiece Contemporary*  
 2:30 3-1 *Elizabeth Winthrop:*  
*All the Days of Her Life*  
 3:00 3-1 *Travelscope*  
 3:30 3-1 *Painting and Travel*  
 4:00 3-1 *America's Heartland*  
 4:30 3-1 *Inside Washington*  
 5:00 3-1 *BBC World News America*  
 5:30 3-1 *Nightly Business Report*  
 6:00 3-1 *PBS NewsHour*  
**7:00 Antiques Roadshow** "Madison, WI, Pt. 1"  
 3-1 *Antiques Roadshow*  
**8:00 Antiques Roadshow** "Denver, CO, Pt. 2"  
 3-1 *Antiques Roadshow*  
**9:00 Sheriff Pat Garrett:**  
**Killer of Billy the Kid**  
 3-1 *Unforgettable: The Korean War*  
 3-3 *Charlie Rose*  
**10:00 Tracks Ahead** "Ohio Central RR"  
 3-1 *Charlie Rose*  
 3-3 *Antiques Roadshow*  
**10:27 Star Gazers**  
**10:30 Official Best of the Fest** "Love I"  
**11:00 Antiques Roadshow**  
 3-1 *Tavis Smiley*  
 3-3 *Walking into the Unknown*  
**12:00 PBS NewsHour**  
 3-1 *Unforgettable: The Korean War*  
 3-3 *Smokin' Fish*

## Tuesday 29th

5:00 3-1 *BBC World News*  
 5:30 3-1 *Religion & Ethics Newsweekly*  
 6:00 3-1 *Antiques Roadshow*  
 7:00 3-1 *Smokin' Fish*  
 8:00 3-1 *Walking into the Unknown*  
 9:00 3-1 *Healthy Body Healthy Mind*  
 9:30 3-1 *Religion & Ethics Newsweekly*

10:00 3-1 *Inner Compass*  
 10:30 3-1 *Everyday Edisons*  
 11:00 3-1 *Song of the Mountains*  
 12:00 3-1 *Antiques Roadshow*  
 1:00 3-1 *Smokin' Fish*  
 2:00 3-1 *Walking into the Unknown*  
 3:00 3-1 *Music Voyager*  
 3:30 3-1 *Travel with Kids*  
 4:00 3-1 *Consuelo Mack WealthTrack*  
 4:30 3-1 *Scully/ The World Show*  
 5:00 3-1 *BBC World News America*  
 5:30 3-1 *Nightly Business Report*  
 6:00 3-1 *PBS NewsHour*  
**7:00 American Experience**  
 "Surviving the Dust Bowl"  
 3-1 *Secrets of the Dead*  
**8:00 Frontline** "Flying Cheap"  
 3-1 *Frontline*  
**9:00 You Should Know**  
 3-1 *Herbert Hoover: Landslide*  
 3-3 *Charlie Rose*  
**9:30 Creative Living**  
**10:00 Liquid Assets: The Story of Our Water Infrastructure**  
 3-1 *Charlie Rose*  
 3-3 *Secrets of the Dead*  
 11:00 3-1 *Tavis Smiley*  
 3-3 *Frontline*  
**11:30 Charlie Rose**  
 12:00 3-1 *Frontline*  
 3-3 *Herbert Hoover: Landslide*  
**12:30 PBS NewsHour**

## Wednesday 30th

5:00 3-1 *BBC World News*  
 5:30 3-1 *Healthy Body Healthy Mind*  
 6:00 3-1 *Secrets of the Dead*  
 7:00 3-1 *Frontline*  
 8:00 3-1 *Herbert Hoover: Landslide*  
 9:00 3-1 *Smart Travels – Pacific Rim*  
 9:30 3-1 *Tracks Ahead*  
 10:00 3-1 *Rough Cut: Woodworking*  
 10:30 3-1 *Woodturning Workshop*  
 11:00 3-1 *Marching Once More: 60 Years*  
*After the Battle of the Bulge*  
 12:00 3-1 *Secrets of the Dead*  
 1:00 3-1 *Frontline*  
 2:00 3-1 *Herbert Hoover: Landslide*  
 3:00 3-1 *Sweet Life*  
 3:30 3-1 *America's Test Kitchen*  
 4:00 3-1 *Truth About Money*  
 4:30 3-1 *McLaughlin Group*  
 5:00 3-1 *BBC World News America*  
 5:30 3-1 *Nightly Business Report*  
 6:00 3-1 *PBS NewsHour*  
**7:00 Nature** "Why We Love Cats and Dogs"  
 3-1 *Nature*  
**8:00 Nova** "The Incredible Journey of the Butterflies"  
 3-1 *Nova*  
**9:00 Angle of Attack, Pt. 2**  
 3-1 *Through a Dog's Eyes*  
 3-3 *Charlie Rose*  
**10:00 Healthy Body Healthy Mind**  
 "Preventing Preterm Birth"  
 3-1 *Charlie Rose*  
 3-3 *Nature*  
**10:30 This Old House**  
**11:00 Charlie Rose**  
 3-1 *Tavis Smiley*  
 3-3 *Nova*  
**11:57 Star Gazers**  
**12:00 PBS NewsHour**  
 3-1 *Nature*  
 3-3 *Music of Your Life*

# ◆ KENW/KMTH-FM LOG ◆

Portales, NM, 89.5 MHz — Maljamar, NM, 98.7 MHz — Tucumcari, NM, 88.9 MHz — DesMoines, NM, 88.5 MHz

Translators: Apache Springs, 90.9 MHz; Clayton, 93.5 MHz; Conchas Dam, 88.3; DesMoines, 106.1 MHz; Ft. Sumner, 91.7 MHz; Las Vegas, 107.1 MHz; Midland, TX - 99.5MHz; Montoya, 90.7 MHz; Raton, 104.7 MHz; Roswell, 91.1 MHz; Roy, 104.9 MHz; Ruidoso, 89.3 MHz; Wagon Mound, 92.1 MHz;

## Sundays

- 8:00 a.m. WITH HEART AND VOICE**  
 Nov 6 All Saints  
 The Feast of All Saints celebrates the lives of all who have died in Christ and whose baptism is complete.  
 Nov 13 American Music features American composers and performers of sacred choral and organ literature of the last century during American Music Month.  
 Nov 20 Christ the King  
 The Feast of Christ the King celebrates the reign of Christ and his victory over death. We'll hear music of majesty and grandeur, as we also tip our musical hat to the American observance of Thanksgiving.  
 Nov 27 Advent I  
 As the new liturgical year begins, we listen to choral and organ music of expectation and preparation, from chant to music of the 21<sup>st</sup> century.
- 9:00 a.m. FOOTLIGHT PARADE**  
 Nov 6 Do Exaggerate!  
 Nov 13 Twists and Turns  
 Nov 20 Funny Ladies  
 Nov 27 I Love a Piano, Etc.
- 10:00 a.m. RADIO LAB**  
 Each hour hosts Jad Abumrad and Robert Krulwich take a big idea, so big that it lives everywhere, and chase that idea, going wherever whim takes them. Along the way, they argue, imagine, and discover the hidden connections that make this idea so surprisingly powerful. And the sounds you hear are as new and startling as the ideas they explore. It's Technicolor radio.
- 11:00 a.m. FRESH AIR WEEKEND WITH TERRY GROSS**  
 This multi-award-winning interview and features program opens the window on contemporary arts and issues with guests from worlds as diverse as literature and economics.
- 12:00 p.m. PEOPLE'S PHARMACY**  
 Joe and Terry Graedon explore different medical topics and issues in depth with medical experts.
- 1:00 p.m. DEMOCRACY NOW!**  
 Hosted by Amy Goodman and Juan Gonzalez, this award-winning series provides access to people and perspectives rarely heard in other media, including independent and international journalists, ordinary people from around the world, grassroots leaders, artists, academics, and independent analysts.
- 2:00 p.m. FOOTLIGHT PARADE**  
 Nov 6 Do Exaggerate!  
 Nov 13 Twists and Turns  
 Nov 20 Funny Ladies  
 Nov 27 I Love a Piano, Etc.
- 3:00 p.m. MOUNTAIN STAGE** is a weekly two-hour program hosted by singer/songwriter Larry Groce. The program presents an array of live contemporary music seasoned with traditional roots performers. It showcases well-known artists and delights in discovering performers who are not so well known.  
 Nov 6 Tim O'Brien; Kathy Mattea; Great Lake Swimmers; Cathie Ryan; Jon Vezner; Sally Barris  
 Nov 13 Ben Sollee; Paul Brady; Vandaveer; Joseph Arthur; Scythian  
 Nov 20 The Jayhawks; Karan Casey & John Doyle; Hot Tuna Electric; Ha Ha Tonka; Southeast Engine  
 Nov 27 Black Dub; Delta Spirit; Anais Mitchell; Danielle Ate the Sandwich; Horse Feathers
- 5:00 p.m. CELTIC CONNECTIONS**  
 Nov 6 New Releases  
 Nov 13 New from Scotland  
 Nov 20 A Visit with Bachand  
 Nov 27 Music & Poetry
- 6:00 p.m. ALL THINGS CONSIDERED**  
**7:00 p.m. DEUTSCHE WELLE FESTIVAL CONCERTS**  
 Nov 6 Schleswig-Holstein Music Festival  
**BEETHOVEN:** Violin Concerto in D, Op. 61  
**TCHAIKOVSKY:** Symphony No. 4 in f, Op. 36  
 Nov 13 Early Music Days in Regensburg  
**ARRIGONI:** Sonata for Mandolin and Continuo  
**CASTELLO:** Sonata Prima a Soprano Solo and other works performed by the Ensemble Artemandoline  
**BIBER:** Gagliarda  
**J.S. BACH:** Reben's Offering and other works performed by the Ensemble Rebaroque  
 Nov 20 Mahler Chamber Orchestra Residency  
**BRAHMS:** Symphony No. 3 in F, Op. 90  
**MAHLER:** Symphony No. 4 in G  
 Nov 27 Gottingen Handel Festival  
**HANDEL:** Allegro (Hornpipe) from the Water Music Suite No. 2 in D and other selections; Music for the Royal Fireworks
- 9:00 p.m. THE ROMANTIC HOURS**  
 Mona Golabek, the acclaimed "Voice of Romance," guides you on a journey through the passion of the greatest composers, authors, poets, and thinkers of all time.  
 Nov 6 Poetry of Hillaire Belloc  
 Nov 13 The life and words of Oscar Wilde  
 Nov 20 Selections from the book, *Sex with Kings*, by Eleanor Herman  
 Nov 27 Poetry of the wife of Dante Gabriel Rossetti, Elizabeth Siddal
- 10:00 p.m. WEEKEND PERFORMANCE TODAY**  
**11:00 p.m. MUSIC OUT OF THE NIGHT AND INTO THE MORNING** until 5:00 a.m. when **Morning Edition** begins.

## Mondays

- 7:00 p.m. CHICAGO SYMPHONY ORCHESTRA**  
 The Chicago Symphony Orchestra recordings have earned many prestigious international awards, including Best Classical Performances in the choral, orchestral, instrumental, and vocal soloist categories.  
 Nov 7 Nicholas McGegan conducts a program with Hubbard Street Dance Chicago.  
**VIVALDI:** Concerto alla rustica; Oboe Concerto in F  
**CORELLI:** Concerto Grosso in D  
**MOZART:** Oboe Concerto in C, K. 314  
 Nov 14 Dutch violinist Janine Jansen makes her CSO debut during the orchestra's Dvorak Festival.  
**DVORAK:** Symphony No. 3 in E-Flat, Op. 10; Violin Concerto in a, Op. 53; Symphony No. 7 in d, Op. 70  
 Nov 21 Riccardo Muti conducts an all-Italian program.  
**MENDELSSOHN:** Symphony No. 4 in A, Op. 90, "Italian"  
**MARTUCCI:** Piano Concerto No. 2, Op. 66  
**BOSSI:** Intermezzi from *Goldoniani*  
 Nov 28 American violinist Joshua Bell is featured in a concert with conductor Yan Pascal Tortelier.  
**FAURE:** Suite from *Pelleas et Melisande*  
**BRUCH:** Violin Concerto No. 1 in g  
**SAINT-SAENS:** Introduction and Rondo capriccioso in a; Symphony No. 3 in c  
**RAVEL:** Valses nobles et sentimentales

9:00 p.m. **PERFORMANCE TODAY**  
 11:00 p.m. **MUSIC OUT OF THE NIGHT AND INTO THE MORNING** until 5:00 a.m. when **Morning Edition** begins.

## Tuesdays

7:00 p.m. **NEW YORK PHILHARMONIC**  
 Nov 1 MOZART: Symphony No. 38, "Prague"; Flute and Harp Concerto  
 DEBUSSY: Jeux; Iberia  
 Nov 8 R. STRAUSS: An Alpine Symphony; Horn Concerto No. 1; Till Eulenspiegel's Merry Pranks



Nov 15 SCHUBERT: Symphony in b, "Unfinished"  
 SHOSTAKOVICH: Symphony No. 13, "Babi Yar"  
 Nov 22 BERNSTEIN: *Chichester Psalms* (World premiere performance); *Kaddish*, Symphony No. 3; Suite Nos. 1 and 2 from the *Dybbuk*  
 Nov 29 HOLST: *The Planets*, Op. 32  
 RESPIGHI: *Roman Tryptych*

9:00 p.m. **PERFORMANCE TODAY**  
 11:00 p.m. **MUSIC OUT OF THE NIGHT AND INTO THE MORNING** until 5:00 a.m. when **Morning Edition** begins.

## Wednesdays

7:00 p.m. **LIVE! AT THE CONCERTGEBOUW**  
 Nov 2 Royal Concertgebouw Orchestra  
 BRUCH: Violin Concerto No. 1, Op. 26  
 SHOSTAKOVICH: Symphony No. 11, Op. 103

Nov 9 Netherlands Radio Chamber Philharmonic  
 VISMAN: Serenade  
 DE LEEUW: Three Shakespeare songs  
 TCHAIKOVSKY: Symphony No. 1, "Winter Dreams"  
 Nov 16 Royal Concertgebouw Orchestra  
 FRANCK: Symphony in d and works by Messiaen and Dutilleux  
 Nov 23 Netherlands Radio Philharmonic Orchestra  
 WAGNER: *Faust Overture*  
 TORSTENSSON: *Polarhvet* (Dutch premiere)  
 BRUCKNER: Symphony No. 3  
 9:00 p.m. **PERFORMANCE TODAY**  
 11:00 p.m. **MUSIC OUT OF THE NIGHT AND INTO THE MORNING** until 5:00 a.m. when **Morning Edition** begins.



## FM Radio Week-at-a-Glance

	Sunday	Monday	Tuesday	Wednesday	Thursday	Friday	Saturday	Monday through Friday					
5:00							5:00 a.m. People's Pharmacy	Regional Newscasts at: 5:33, 6:33, 7:33, & 10:06 a.m. 12:06, 2:06, & 5:33 p.m. 8:00 Marketplace Report 8:08 Snow Country Ski Report 8:20 Nature Notes (TuTh) 8:30 Health in a Heartbeat 8:45 A Sign of Science 9:00 Weather/News 9:05 Dateline New Mexico 9:15 Marketplace Tech Report 9:30 Health Matters 9:45 New Mexico Matters 10:00 News/Statewide News 10:15 Engines of Our Ingenuity 10:30 N.M. Mile Markers/ Disability Awareness 10:45 Writer's Almanac 11:00 Weather/News 11:15 Food for Thought 11:30 Pulse of the Planet 11:45 Isla Earth 12:00 News/Statewide New 12:15 Community Calendar/ Composer's Datebook 12:30 Moment in Time 12:33 Snow Country Ski Report 12:45 Arts and Science 1:00 Weather/News 1:15 Family Health 1:30 Earth & Sky/ Loh Down on Science 1:45 A Moment of Science 2:00 News/Statewide News 2:15 Naturewatch/Bird Note 2:30 America's Storyteller 2:45 90 Second Naturalist/ Environminute 3:00 Weather/News 3:06 MarketPlace Index 3:15 The Plant Detective 3:25 Dateline New Mexico 3:29 Snow Country Ski Report 6:57 Weather 6:58 N.M. Mile Markers 9:00 Weather/News 12:00 a.m. Weather/News 3:00 a.m. Weather/News					
6:00	Weekend Edition	Morning Edition	Morning Edition	Morning Edition	Morning Edition	Morning Edition	6:00 a.m. Weekend Edition						
7:00													
8:00	With Heart and Voice	Music	Music	Music	Music	Music	8:00 a.m. Car Talk						
9:00	Footlight Parade						9:00 a.m. Wait, Wait... Don't Tell Me						
10:00	Radiolab						News		News	News	News	News	10:00 a.m. Bioneers
11:00	Fresh Air Weekend with Terry Gross						&		&	&	&	&	10:30 a.m. New Letters
12:00	People's Pharmacy (R)						Features		Features	Features	Features	Features	11:00 a.m. American Opera Companies
1:00	Democracy Now!												
2:00	Footlight Parade												
3:00	Mountain Stage						Parents Journal		Best/Knowledge	51 Percent	Health Show	Says You!	3:00 p.m. Classical Guitar
3:30							Marketplace		Marketplace	Marketplace	Marketplace	Marketplace	
4:00							All Things Considered		All Things Considered	All Things Considered	All Things Considered	All Things Considered	Prairie Home Companion
4:30													
5:00	Celtic Connections	PBS NewsHour	PBS NewsHour	PBS NewsHour	PBS NewsHour	PBS NewsHour	All Things Considered						
6:00	All Things Considered	Chicago Symphony Orchestra	New York Philharmonic	Live at the Concertgebouw	Collectors' Corner	Compact Discoveries	Marian McPartland						
7:00	Deutsch Welle Festival Concerts					Song of America	Swingin' Down the Lane						
8:00		Performance Today	Performance Today	Performance Today	Performance Today	Performance Today	Jazz at Lincoln Center Wynton Marsalis						
9:00	The Romantic Hours						Jazzset with D.D. Bridgewater						
10:00	Performance Today												
11:00	Classical Music Out of the Night until 5:00 a.m.	Classical Music Out of the Night until 5:00 a.m.	Classical Music Out of the Night until 5:00 a.m.	Classical Music Out of the Night until 5:00 a.m.	Classical Music Out of the Night until 5:00 a.m.	Classical Music Out of the Night until 5:00 a.m. when People's Pharmacy begins.	Classical Music Out of the Night until 6:00 a.m.						

## Thursdays

- 7:00 p.m. COLLECTORS' CORNER with HENRY FOGEL**
- Nov 3 Ivan Moravec Live in Brussels  
The great Czech pianist plays works from Beethoven, Brahms, and Chopin.
- Nov 10 Gustav Holst – Beyond “The Planets”
- Nov 17 Frank Shipway, Conductor, Program 1  
SIBELIUS: Symphony No. 2  
SHOSTAKOVICH: Symphony No. 10
- Nov 24 Frank Shipway, Conductor, Program 2  
MAHLER: Symphony No. 5  
HUMPERDINCK: Overture from *Hansel and Gretel*  
SHOSTAKOVICH: Suite from *The Gadfly*  
ROSSINI: *William Tell* Overture
- 9:00 p.m. PERFORMANCE TODAY**
- 11:00 p.m. MUSIC OUT OF THE NIGHT AND INTO THE MORNING** until 5:00 a.m. when **Morning Edition** begins.

## Fridays

- 7:00 p.m. COMPACT DISCOVERIES**
- Nov 4 More Classical Disney
- Nov 11 The Cuban Gershwin
- Nov 18 Classic Happiness
- Nov 25 Musical Beasts
- 8:00 p.m. SONG OF AMERICA**
- Nov 4 War Cries  
Songs have helped shape and express emotions – inspiring us to battle, sustaining our courage, and giving us a way to lament our losses.
- Nov 11 Ives the Chronicler  
Charles Ives was unprecedented at suiting his musical style to the story he wanted to tell.
- Nov 18 Champions of American Song  
Over the course of the 20<sup>th</sup> century, our classical singers were enthusiastic advocates for songs by American composers.



- Nov 25 Arthur Farwell, American Pioneer  
Arthur Farwell used music of Native Americans and words of American poets as inspiration for his own unique voice.
- 9:00 p.m. PERFORMANCE TODAY**
- 11:00 p.m. MUSIC OUT OF THE NIGHT AND INTO THE MORNING** until 5:00 a.m. when **People's Pharmacy** begins.

## Saturdays

- 8:00 a.m. CAR TALK**
- 9:00 a.m. WAIT WAIT DON'T TELL ME WITH PETER SEGAL AND CARL KASELL**
- 10:00 a.m. THE BIONEERS: Revolution from the Heart of Nature** is a stirring, award-winning documentary series composed of themed programs highlighting cutting-edge solutions to major environmental challenges and crises, along with broader social approaches for ecological and cultural restoration.

## BUSINESS FRIENDS

Many of the outstanding programs on KENW-TV and KENW/KMTH-FM are underwritten by the following businesses, organizations, and individuals. Each Business Friend appears with the name of the program(s) they have chosen to underwrite. We gratefully acknowledge their support and encourage you to let them know you notice and appreciate their generosity.

Artesia, NM  
*Nightly Business Report, Nova*

Clovis Community College  
Cultural Art Series  
*Primetime Programming, TV*

Anderson-Bethany  
Funeral Home  
and Crematory  
Roswell, NM  
*Classic Gospel*

Clovis Depot  
Model Train Museum  
Clovis, NM  
*Tracks Ahead  
Weekend Edition  
FM Programming*

PLATEAU  
Wireless  
"A CLOSER CONNECTION"  
*Evening News/Public Affairs  
Programming  
News 3 New Mexico*

Featherstone  
Development  
Corporation  
Roswell, NM  
*Morning Edition, FM  
Jazz Programming, FM*

**New Mexico Humanities Council**  
Albuquerque, NM  
(505) 277-3217  
www.nmhum.org  
*Morning Edition, FM  
Weekend Edition, FM*

**Lindsey Law Firm**  
Daniel R. Lindsey  
John L. Collins, Jr.  
Clovis, NM  
*Nova*

Managed  
Waste  
Clovis, Portales, Hobbs,  
Lovington, NM  
*Weekend Programming, FM*

FEC  
A Touchstone Energy Cooperative  
Farmers' Electric Cooperative,  
Inc. of New Mexico  
Clovis, NM  
*Ask This Old House*

Ruidoso, NM  
*Morning Edition, FM  
Weekend Edition, FM*

**Roswell Jazz Festival**  
Roswell, NM  
*Piano Jazz, FM  
Jazz at Lincoln Center*

The Citizens Bank  
Clovis, Fort Sumner, Texico, NM  
*Market to Market*

Dairy  
Creative Living  
Maya & Miguel, Sesame Street

Phil Brewer  
Attorney & Counselor  
Roswell, NM  
*Car Talk, FM*

NM STATE  
UNIVERSITY  
CARLSBAD  
Carlsbad, NM  
*Morning Edition, FM  
Weekend Edition, FM*

**Tome on the Range**  
Las Vegas, NM  
*Fresh Air Weekend  
Weekend Edition, FM  
Writer's Almanac, FM*

Ford  
MERCURY  
LINCOLN  
Permian Ford-Lincoln-  
Mercury, Inc.  
Hobbs, NM  
*Weekend ATC, FM  
All Things Considered, FM  
Car Talk, FM*

Taylor Water Well Service  
Carlsbad, NM  
*A Prairie Home Companion, FM*

Refining Company  
Artesia, NM  
*Music & News, FM*

Tower  
Barbershop  
Midland, TX  
*Nature Notes, FM  
Food for Thought, FM  
Naturewatch/Bird Note, FM*

CJ's  
Pharmacy... At your Service  
Portales, NM  
*Antiques Roadshow,  
Healthy Body, Healthy Mind,  
McLaughlin Group,  
Sportslook*

Merrill-Lynch  
Roswell, NM  
*Consuelo Mack WealthTrack*

**This space could be yours!**  
For Underwriting opportunities,  
please call toll-free  
(888) 367-5369. Ask for  
Rena for TV, Carla for FM.

### KENW-TV is Now on Both DirecTV and Dish Network Satellite

Both Dish Network and DirecTV Satellite services are now carrying KENW-TV in the Albuquerque-Santa Fe Designated Market Area (DMA). This DMA includes all counties in New Mexico except Roosevelt, Curry, Quay, Union, and Dona Ana. DirecTV is carrying the KENW-TV High Definitions Channel (HD 3-1) on its HD channel 3 and the KENW-TV Standard Definition (SD 3-2) on channel 3. Dish Network is carrying the KENW-TV SD signal on its channel 3.

The Nielsen Company decides which counties go into the various DMAs. At the present time, there are 210 DMAs in the United States. In population size, the Albuquerque-Santa Fe DMA is the 45th largest in the U.S. because it takes in most of the State of New Mexico. Nielsen determines the counties in a DMA by which television stations the viewers in that county are watching.

By Nielsen rules, DirecTV and Dish Network subscribers in Union, Quay, Curry, and Roosevelt counties will receive the Amarillo PBS station. In all other counties of New Mexico, except for Dona Ana, subscribers will receive PBS from KENW-TV (Portales) and KNME-TV (Albuquerque). Dona Ana is in the El Paso DMA, and those subscribers will receive PBS from KRWG-TV (Las Cruces) and KCOS-TV (El Paso).

**10:30 a.m. NEW LETTERS ON THE AIR**  
 This program focuses on writers of poetry, fiction, and creative non-fiction, with interviews interspersed with readings by the writer, or a public poetry reading.

- Nov 5 Poet and translator Tony Barnstone
- Nov 12 Novelist Sapphire
- Nov 19 Poet and Pleiades magazine editor Wayne Miller
- Nov 26 To be announced

**11:00 a.m. HOUSTON GRAND OPERA**  
 Nov 5 HEGGIE: *Dead Man Walking* (in English)  
 Nov 12 DONIZETTI: *Lucia di Lammermoor* (in Italian)  
 Nov 19 BRITTEN: *Peter Grimes* (in English)  
 Nov 26 PUCCINI: *Tosca* (in Italian)

**3:00 p.m. CLASSICAL GUITAR ALIVE!**  
**4:00 p.m. A PRAIRIE HOME COMPANION**  
 Hear the latest news from Lake Wobegon and lots more entertainment.

Nov 5 Live from the CFSB Center at Murray State University in Murray, KY, celebrating Bill Monroe and his music

- Nov 12 To be announced
- Nov 19 Live from the Skoglund Center Auditorium at St. Olaf College in Northfield, MN
- Nov 26 Live from the Town Hall in New York, NY

**6:00 p.m. ALL THINGS CONSIDERED**  
**7:00 p.m. MARIAN McPARTLAND's PIANO JAZZ**

- Nov 5 Joanne Brackeen, virtuoso pianist and composer
- Nov 12 John Lewis, pianist
- Nov 19 Albert Dailey, pianist
- Nov 26 Herbie Hancock, pianist

**8:00 p.m. SWINGIN' DOWN THE LANE WITH DAVID MILLER** is dedicated to keeping the big band sound alive and well. New generations are thrilling to Benny Goodman, Artie Shaw, Count Basie, Tommy Dorsey, Glenn Miller, and of course the illustrious Duke Ellington.

- Nov 5 Kalmar and Ruby
- Nov 12 Lyrics of Lorenz Hart
- Nov 19 Songs of World War II, Part 1
- Nov 26 Songs of World War II, Part 2

**9:00p.m. JAZZ AT LINCOLN CENTER RADIO WITH WYNLON MARSALIS**

- Nov 5 Jazz and Art II
- Nov 12 Regina Carter with Reverse Thread, and Stefon Harris with Blackout
- Nov 19 Music of the Modern Jazz Quartet
- Nov 26 John Coltrane – The Breakthrough: Giant Steps

**10:00 p.m. JAZZSET WITH DEE DEE BRIDGEWATER**

- Nov 5 The Second Set: Roy Hargrove Quintet at the Village Vanguard
- Nov 12 Charles Lloyd and Sangam at the Newport Jazz Festival
- Nov 19 Miguel Zenon's Puerto Rican Song Project at Newport
- Nov 26 Ole Mathisen and FFEAR, the Forum for Electro-Acoustical Research, at Miller Theater, NYC

**11:00 p.m. MUSIC OUT OF THE NIGHT AND INTO THE MORNING** until 6:00 a.m. when **Weekend Edition** begins.



## BUSINESS FRIENDS

If you would like information about becoming a Business Friend of Public Television or Public Radio by underwriting one or more of our many outstanding programs, please call Rena Garrett, Development/Promotion Director for Public Television, or Carla Chacon, Development Director for Public Radio, at (575) 562-2112 or toll-free at 1-888-FOR-KENW (367-5369).

**The Sewing Basket**  
 Clovis, NM  
*Quilting Programs*

**VALLEY MOWER CLINIC, INC**  
 Clovis, NM  
*P. Allen Smith's Garden to Table*

**John J. Ingram & Associates**  
 Midland, TX  
 1-800-299-6809  
*Morning Edition, FM*  
*Dateline New Mexico, FM*  
*Weekend Edition, FM*  
*People's Pharmacy, FM*

**Atwood, Malone, Turner & Sabin**  
 Attorneys at Law  
 Roswell, NM  
*Symphonycast*  
*All Things Considered, FM*

**CJ's**  
 Pharmacy... At your Service  
 Portales, NM  
*Family Health, Collectors Corner, Classical Guitar, Mountain Stage, FM*

**Xcel Energy**  
*Program Support*

**EISBACH FACIAL PLASTIC SURGERY PC**  
 Albuquerque, NM  
*Antiques Roadshow, Creative Living, Masterpiece, PBS NewsHour*

**This space could be yours!**  
 For Underwriting opportunities, please call toll-free (888) 367-5369. Ask for Rena for TV, Carla for FM.

**The Ruidoso Physical Therapy Clinic**  
 Ruidoso, NM  
*Morning Edition, Health Matters, Living on Earth, Romantic Hour, Symphonies, FM*

**Roosevelt County Electric Cooperative**  
 Portales, NM  
*Antiques Roadshow*

**NEW MEXICO AMERICAN WATER**  
*Nature*

**CHAVES COUNTY FARM AND LIVESTOCK BUREAU**  
 Dexter and Roswell, NM  
*America's Heartland*

**MESCALEROS COFFEE**  
 Tucuman, NM  
*Weekend Edition, FM*

**Hinkle, Hensley, Shanor & Martin, L.L.P.**  
 Roswell, Santa Fe, NM; Austin, Midland, TX  
*Morning Edition, FM*  
*Prairie Home Companion, FM*

**Muleshoe State Bank**  
 Muleshoe, TX  
*Nature*

**Goodwill Industries**  
*Morning Edition, FM*  
*All Things Considered, FM*

**James Polk Stone Community Bank**  
 Clovis, Hagerman, Hobbs, Portales, Roswell  
*Austin City Limits*

**Living Desert Zoo & Gardens State Park**  
*Open Every Day Except Christmas*  
 Carlsbad, NM  
*Austin City Limits, Nature, PBS NewsHour*

**Maddox, Holloman & Kirksey, P.C., Attorneys and Counselors at Law**  
 Hobbs, NM  
*Morning Edition*  
*All Things Considered, FM*

**SECURITY STATE BANK**  
 Farwell, TX  
*Antiques Roadshow*

**This space could be yours!**  
 For Underwriting opportunities, please call toll-free (888) 367-5369. Ask for Rena for TV, Carla for FM.

Ruidoso, NM

**First Presbyterian Church of Roswell**  
 Roswell, NM  
*With Heart and Voice, FM*

**THE BOX**  
 Clovis and Portales  
*Wait, Wait...Don't Tell Me, FM*

**Names and Numbers**  
 Telephone Book  
*Evening News/Public Affairs Programming*  
*News 3 New Mexico*

**NM Department of Health & Division of Vocational Rehabilitation**  
 Santa Fe, NM  
*Public Health Update, FM*

**EASTERN NEW MEXICO UNIVERSITY**  
 Portales, NM  
*Austin City Limits*

**YMCA OF CENTRAL NEW MEXICO**  
*Dateline New Mexico, FM*  
*Parents Journal, Music, FM*

**Featherstone Development Corporation**  
 Roswell, NM  
*Nature, Nightly Business Report, Stargazer*

**Penasco Valley Telecommunications**  
*Health Show, Car Talk, Mountain Stage*  
 FM

**Clovis NEWS JOURNAL**  
 Clovis, NM  
*This Old House*

**WILL FERGUSON & ASSOCIATES**  
 Albuquerque, NM  
*BBC World News*  
*PBS NewsHour*

**STATE FARM INSURANCE**  
  
*Car Talk, FM*  
*Coaches Corner, FM*

**This space could be yours!**  
 For Underwriting opportunities, please call toll-free (888) 367-5369. Ask for Rena for TV, Carla for FM.

Las Cruces, NM  
*America's Heartland*

**News-Tribune**  
 Portales, NM  
*Austin City Limits*

# MASTERPIECE

## CONTEMPORARY

### Page Eight

Bill Nighy and Oscar-winner Rachel Weisz head an all-star cast in this spellbinding political thriller. "Page Eight" touches on torture, corruption, betrayal, and the passing of the old guard of British spies. An aging spy stumbles on an international scandal that could bring down the British government. It's only a single sentence at the bottom of page eight of a top secret document, but the passage hints at a conspiracy of silence, implicating high government officials in Washington and London. It's explosive stuff that goes right to the door of the British prime minister.

**Sunday, November 6th at 8:00 p.m.**  
**Friday, November 11th at 10:30 p.m.**

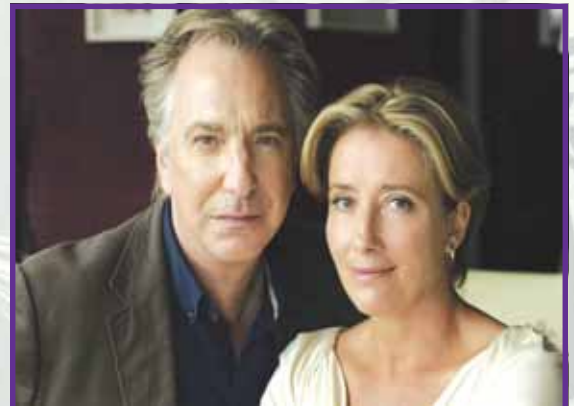


Rachel Weisz as Nancy Pierpan and Bill Nighy as Johnny Worricker in "Page Eight."

### The Song of Lunch

What could possibly go wrong when two ex-lovers meet for lunch at their favorite haunt from years before? Lots. Emma Thompson and Alan Rickman take that risk in this funny, bittersweet drama adapted from Christopher Reid's captivating poem. Sex, temptation, guilt, and revenge are all on the menu. Rickman's character (neither is named) is a morose, middle-aged copy editor with a book publisher in London. Fifteen years earlier, Thompson's outgoing character left him for a wildly successful author, and she now lives a happily-married family life in Paris.

**Sunday, November 13th at 8:00 p.m.**  
**Friday, November 18th at 10:30 p.m.**



Emma Thompson and Alan Rickman star as two ex-lovers in "The Song of Lunch."

*Dated material,  
please do not delay.  
Address Service Requested.*

Eastern New Mexico University  
1500 S. Avenue K  
Portales, New Mexico 88130



NON PROFIT ORG  
U.S. POSTAGE PAID  
PORTALES NM 88130  
PERMIT 15