

Q2.3

Program Guide KENW-TV/FM
Eastern New Mexico University
December 2011

Come Home to PBS

Winterfest
December 2nd-11th

When to watch from *A to Z*

Regular Programs —December 2011

American Woodshop – Saturdays, 6:30 a.m.
America's Heartland – Saturdays, 6:30 p.m. (except 3rd);
Sundays, 12:30 p.m. (25th only)
Antiques Roadshow – Mondays, 7:00 p.m./8:00 p.m. (except 5th)/
11:00 p.m.; Sundays, 7:00 a.m.
Are You Being Served? – Saturdays, 8:30 p.m. (begins 17th)
Ask This Old House – Saturdays, 4:00 p.m.
Austin City Limits – Saturdays, 9:00 p.m. (17th, 24th only)/12:00 midnight
Baking Made Easy – Saturdays, 7:30 a.m.; Tuesdays, 11:00 a.m.
BBC Newsnight – Fridays, 5:00 p.m.
BBC World News – Monday–Friday, 6:30 a.m./4:30 p.m.
Beads, Baubles and Jewels – Mondays, 12:30 p.m.
Beauty of Oil Painting – Fridays, 12:30 p.m.;
Saturdays, 12:00 noon (except 17th)
Charlie Rose – Tuesday–Thursday, 11:00 p.m. (except 7th; 11:30 p.m. on 8th)
Classic Art Showcase – Sunday–Saturday, 1:00 a.m.–6:00 a.m.
Classic Gospel – Sundays, 8:00 a.m./4:00 p.m.
Classical Stretch – Monday through Friday, 6:00 a.m.
Closer to Truth – Sundays, 2:00 p.m. (25th only)
Consuelo Mack WealthTrack – Fridays, 7:30 p.m.
Cook's Country – Saturdays, 8:00 a.m.; Mondays, 11:00 a.m.
Creative Living/Sheryl Borden – Tuesdays/Thursdays, 12:00 noon;
Tuesdays, 9:30 p.m. (27th only); Saturdays, 2:00 p.m.
Cultura – Sundays, 12:00 noon (18th, 25th only)
European Journal – Thursdays, 5:00 p.m. (begins 15th)
Everyday Yoga with Amiee –
Monday–Friday, 6:57 a.m./5:27 p.m. (except Friday)
Fons & Porter's Love of Quilting – Saturdays, 1:30 p.m.
Frontline – Tuesdays, 8:00 p.m. (except 6th, 27th);
Thursdays, 7:00 p.m. (29th only)
Globe Trekker – Sundays, 11:00 a.m. (except 4th, 11th)
Healthy Body/Mind – Sundays, 3:00 p.m. (except 4th, 18th);
Wednesdays, 10:00 p.m. (except 7th)
Hometime – Saturdays, 3:00 p.m.
Inside Washington – Sundays, 5:00 p.m. (except 4th, 11th);
Mondays, 5:00 p.m. (begins 12th)
Inspiration with Lance Heft – Thursdays, 9:00 p.m. (begins 15th)
Joy of Music – Sundays, 9:00 a.m./9:30 a.m. (except 4th)
Joy of Painting – Saturdays, 11:30 a.m.
Jubilee – Thursdays, 10:00 p.m. (begins 22nd)
Keeping Up Appearances – Saturdays, 8:00 p.m. (begins 17th)
Knitting Daily – Tuesdays, 11:30 a.m.
Lawrence Welk Show – Saturdays, 7:00 p.m. (except 3rd, 10th)
Market to Market – Fridays, 7:00 p.m.
Masterpiece –
“**Downton Abbey**” – Sunday, 18th, 8:00 p.m. (Pt. 1)/
9:30 p.m. (Pt. 2); Sunday, 25th, 8:00 p.m. (Pt. 3)
“**Collision**” – Friday, 23rd, 10:00 p.m. (Pt. 1);
Friday, 30th, 10:00 p.m. (Pt. 2)
McLaughlin Group – Sundays, 5:30 p.m. (except 4th, 11th)
Motorweek – Saturdays, 9:30 a.m. (except 3rd)
Nature – Saturdays, 11:00 p.m.; Wednesdays/Sundays, 7:00 p.m.
“**Desert Lions**” – 17th
“**Christmas in Yellowstone**” – 21st, 25th
“**Arctic Bears**” – 28th only
Need to Know – Fridays, 8:30 p.m. (except 9th);
Sundays, 1:00 p.m. (25th only)
New Fly Fisher – Wednesdays, 11:00 a.m. (new series)
News 3 New Mexico – Monday–Thursdays, 5:00 p.m. (ends 8th)
Nightly Business Report – Monday–Friday, 5:30 p.m.
Nova – Wednesdays, 8:00 p.m. (21st, 28th only)/9:00 p.m.
(14th, 28th only); Saturdays, 10:00 p.m. (17th, 24th only);
Sundays late night, 12:00 a.m.
Official Best of the Fest – Sundays, 11:30 p.m. (4th, 25th only);
Mondays, 10:30 p.m.
P. Allen Smith's Garden Home – Saturdays, 10:00 a.m. (except 3rd)
Paint This with Jerry Yarnell – Saturdays, 11:00 a.m.

Pati's Mexican Table – Saturdays 8:30 a.m.
PBS NewsHour – Monday–Friday, 6:00 p.m./12:00 midnight
Quilt in a Day – Saturdays, 12:30 p.m.
Quilting Arts – Saturdays, 1:00 p.m.
Red Green Show – Thursdays, 9:30 p.m. (except 8th)
Religion & Ethics Newsweekly – Sundays, 3:30 p.m.;
Wednesdays, 5:00 p.m. (begins 14th)
Report from Santa Fe – Saturdays, 6:00 p.m.
Rough Cut–Woodworking w/Tommy Mac – Wednesdays, 11:30 a.m.
Scrapbook Soup – Saturdays, 2:30 p.m.; Wednesdays, 12:30 p.m.
Scully/The World News – Tuesdays, 5:00 p.m. (begins 13th)
Second Opinion – Sundays, 6:30 a.m.
Sewing with Nancy – Saturdays, 5:00 p.m.
Sew It All – Tuesdays, 12:30 p.m.; Saturdays, 5:30 p.m. (except 3rd)
Sit and Be Fit – Monday, Wednesday, Friday, 12:00 noon
Song of the Mountains – Thursdays, 8:00 p.m. (except 8th)
Star Gazers – Wednesdays, 11:57 p.m.; Saturdays, 10:57a.m./
9:57 p.m.; Sundays, 2:57 p.m./11:57 p.m.; Mondays, 10:27 p.m.
Taste of History III – Thursdays, 11:30 a.m. (except 15th);
Saturdays, 7:00 a.m.
Texas Parks & Recreation – Sundays, 2:30 p.m. (25th only)
This Old House – Saturdays, 3:30 p.m.; Wednesdays, 10:30 p.m. (except 7th)
Tracks Ahead – Mondays, 10:00 p.m. (25th only, new series)
Travelscope – Sundays, 6:00 a.m.
Victory Garden – Saturdays, 10:30 a.m. (except 3rd)
Washington Week – Fridays, 8:00 p.m.
Welcome to My Studio – Thursdays, 12:30 p.m.;
Saturdays, 4:30 p.m. (except 3rd)
Woodsmith Shop – Thursdays, 11:00 a.m. (except 15th);
Saturdays, 6:00 a.m.
Woodsongs – Thursdays, 10:00 p.m. (no play on 8th, ends on 15th)
Woodturning Workshop – Saturdays, 9:00 a.m.
Zonya's Health Bites – Mondays, 11:30 a.m.

Special Programs

3 Steps to Incredible Health – Sunday, 11th, 11:30 a.m.
60s Pop, Rock & Soul – Saturday, 3rd, 8:30 p.m.;
Sunday, 11th, 5:00 p.m.
American Masters –
“**Lucille Ball: Finding Lucy**” – Wednesday, 7th, 10:00 p.m.
“**Eames: The Architect and the Painter**” – Monday, 19th, 9:00 p.m.
Blitz: London's Longest Night – Sunday, 11th, 10:00 p.m.
Bob Ross: The Happy Painter – Saturday, 17th, 11:30 a.m.
Body's Secret Army – Friday, 2nd, 11:30 p.m.
Botany of Desire – Tuesday, 27th, 7:00 p.m.
Broadside (2 Pts.) – Fridays, 9:00 p.m. (begins 23rd)
Buddy Holly: Listen to Me – Monday, 5th, 7:00 p.m.; Friday, 9th, 8:30 p.m.
Carols Then and Now with the Mormon Tabernacle Choir –
Sunday, 18th, 12:30 p.m.
Catholicism (4 Pts.) – Tuesdays, 10:00 p.m. (begins 13th);
Sundays, 6:00 p.m. (begins 18th)
Celtic Woman–Believe – Saturday, 3rd, 6:30 p.m.; Sunday, 11th, 1:00 p.m.
Christmas at Belmont – Thursday, 22nd, 7:00 p.m.
Christmas at St. Olaf – Tuesday, 20th, 7:00 p.m.
Christmas with the Celts – Thursday, 8th, 7:00 p.m.
Christmas with the Mormon Tabernacle Choir Featuring David Archuleta – Tuesday, 13th, 7:00 p.m.; Sunday, 25th, 10:00 a.m.
Classic Gospel Special–A Tent Revival Homecoming –
Sunday, 4th, 8:00 a.m.; Saturday, 10th, 7:00 p.m.
Coldplay's New Years Eve: An Austin City Limits Special –
Saturday, 31st, 9:00 p.m./11:30 p.m.
Colonial Williamsburg 2011 “Westward!” – Thursday, 15th, 11:00 a.m.
Daniel O'Donnell: Nashville – Monday, 5th, 8:30 p.m.
Death of the Old West – Tuesday, 27th, 9:00 p.m.; Friday, 30th, 11:30 p.m.
Easy Yoga for Arthritis – Sunday, 4th, 2:30 p.m.
Enola Gay's Navigator: Theodore “Dutch” Van Kirk –
Sunday, 18th, 11:00 p.m.
European Christmas Markets – Friday, 9th, 11:30 p.m.
Financial Fitness After 50! – Sunday, 11th, 10:00 a.m.
Grand Canyon Serenade – Sunday, 4th, 10:30 p.m.
Great Performances “Hugh Laurie: Let Them Talk” –
Saturday, 31st, 10:30 p.m.



Q2.3 Program Guide

THE MAGAZINE FOR THE FRIENDS OF PUBLIC BROADCASTING DECEMBER 2011

Q2-3 Program Guide is published each month by the Broadcast Center, a non-profit public service division of Eastern New Mexico University.

Q2-3 Program Guide (Cue to 3) is available to friends contributing \$35 per year or more to the support of public broadcasting. Senior Citizen and Student memberships are available for \$25. All contributions are tax deductible. Donations should be made payable to Friends of **KENW-TV** or to Friends of **KENW-FM** or **KMTH-FM**.

KENW-TV, Channel 3, can be seen on UHF TV analog translators in the following areas:

Carlsbad - Channel 49; Ruidoso - Channel 49
Tucumcari - Channel 32; Ft. Sumner - Channel 34

KENW-TV digital transmitters are located in: Artesia; Carlsbad; Ft. Sumner; Hobbs; Portales; Clovis; Roswell; Tucumcari.

KENW-FM, 89.5 MHz, Portales; **KMTH-FM**, 98.7 MHz, Maljamar; **KENM-FM**, 88.9 MHz, Tucumcari; **NM**; **KENU-FM**, DesMoines, NM, and FM translators in the following areas:

Apache Springs - 90.9 MHz Montoya - 90.7 MHz
Clayton - 93.5 MHz Raton - 104.7 MHz
Conchas Dam - 88.3 MHz Roswell - 91.1 MHz
Ft. Sumner - 91.7 MHz Roy - 104.9 MHz
Las Vegas - 107.1 MHz Ruidoso - 89.3 MHz
Midland, TX - 99.5 MHz Wagon Mound - 92.1 MHz

Telephone: From Cannon A.F.B., Clovis, Portales, and Roosevelt County, call (575) 562-2112. Others, call toll-free 1-888-FOR-KENW (367-5369).

Mailing Address:

KENW-TV/FM
52 Broadcast Center, ENMU
1500 South Avenue K
Portales, NM 88130

Web site: www.kenw.org

E-Mail: kenwtv@enmu.edu — kenwfm@enmu.edu

Fax: (575) 562-2590

We always welcome your comments and/or suggestions:

Toll-free 1-888-FOR-KENW (367-5369)

- Winterfest 2011** features some spectacular new musical specials, including **Buddy Holly – Listen to Me**; **Celtic Woman – Believe**; **60s Pop, Rock & Soul**; **Paul Simon: Live at Webster Hall, NY**; and **Santana – Live at Montreux 2011**. In **The Story of Jesus**, nine of the world's leading Biblical experts re-examine the Gospel accounts of Jesus's life. The **Mayo Clinic Diet** special is based on research conducted under the most exacting standards by the most respected physicians and nutritionists in the world.
- Trial and Heirs: Protect Your Family Fortune** and **Healthy Hormones: Brain/Body Fitness** are two new self-help specials airing during **Winterfest 2011**. Decades in the making, **Journey of the Universe** explores the role of humans in the 14-billion year history of the universe. **American Masters** presents “**Lucille Ball: Finding Lucy**,” that explores the incredible life of the comic icon. **Great Performances** “**Andrea Bocelli in Central Park**,” **Human Nature Sings Motown**, and the **Classic Gospel Special – A Tent Revival Homecoming** are among the musical highlights of **Winterfest**.
- Catholicism** is an epic four-part series that uses art, architecture, literature, and music around the world to tell the story of Catholicism. **Steve Jobs – One Last Thing** provides an inside look at the man and the major influences that helped shape his life and his career. Popular Britcoms **Keeping Up Appearances** and **Are You Being Served?** return. Austin City Limits presents a new 90-minute holiday special, **Coldplay's New Year's Eve**.
- American Masters** “**Eames: The Architect and the Painter**” focuses on America's most important and influential designers. **Life Focus** “**Living by the Book**” tells the surprising story of an atheist and an evangelical pastor who both decide to devote a year to emulating Jesus's life and teaching. **Bob Ross: The Happy Painter** presents an intimate look at the beloved artist. **KENW-TV** presents **Scam Alert, A Consumer Protection Special**, an hour-long call-in program that allows viewers to address their concerns to a panel of experts.

Q2.3 Program Guide Staff

Editor: **Linda Stefanovic**
Assistant Editor: **Jenifer Boca**
Program Log Descriptions: **Karen Leonhardt**
Printing: **University Press**

Eastern New Mexico University is an affirmative action and equal opportunity employer. The University does not discriminate on the basis of race, color, national origin, sex, or handicap in its programs, activities, or employment. Persons seeking additional information about the University's nondiscrimination policy should contact the Executive Director of Planning & Analysis, ENMU, Station #2, Portales, NM 88130.

Healthy Hormones – Sunday, 4th, 1:30 p.m.

Historic Walks – Sunday, 4th, 10:00 a.m.

How to Shop for Free – Tuesday, 6th, 10:00 p.m.

Human Nature Sings Motown – Saturday, 3rd, 10:30 p.m.;
Thursday, 8th, 8:30 p.m.

Jerusalem: Center of the Universe – Sunday, 25th, 9:30 p.m.

Journey of the Universe – Wednesday, 7th, 7:00 p.m.

Legends of Folk – Village – Friday, 9th, 10:00 p.m.

Life Focus “Living by the Book” – Sunday, 11th, 11:30 p.m.;
Sunday, 25th, 1:30 p.m.

Live from Lincoln Center “George Balanchine's The Nutcracker” – Wednesday, 14th, 7:00 p.m.

Marching Once More: 60 Years After the Battle of the Bulge –
Monday, 12th, 9:00 p.m.

Mayo Clinic Diet – Saturday, 3rd, 9:30 a.m.

National Christmas Tree Lighting 2011 –
Sunday, 18th, 7:00 p.m.

Paul Simon: Live at Webster – Sunday, 4th, 7:30 p.m.;
Thursday, 8th, 10:00 p.m.

PBS Arts Fall Festival –

“**Andrea Bocelli in Central Park**” – Friday, 2nd, 9:00 p.m.;
Sunday, 4th, 5:00 p.m.

“**The Little Mermaid from the San Francisco Ballet**” –

Friday, 16th, 9:00 p.m.; Sunday, 18th, 1:00 p.m.

Rio Grande Ski Train – Monday, 12th, 10:00 p.m.

Santana – Live at Montreux – Saturday, 10th, 9:00 p.m.

Scala & Kolacny Brothers – Sunday, 4th, 9:00 p.m.

Scam Alert, A Consumer Protection Special –
Thursday, 1st, 7:00 p.m.

Sewing with Nancy Special “Sewing A to Z” –
Saturday, 3rd, 4:30 p.m.

Steve Jobs – One Last Thing – Thursday, 15th, 7:00 p.m.;
Sunday, 18th, 10:00 a.m.; Monday, 26th, 9:00 p.m.

Story of Jesus, Pt. 1 – Tuesday, 6th, 7:00 p.m.;
Sunday, 11th, 7:00 p.m.

Straight No Chaser – Songs of the Decades: Holiday –
Wednesday, 7th, 8:30 p.m.; Saturday, 10th, 10:30 p.m.

Suze Orman's Money Class – Sunday, 4th, 11:30 a.m.

Tragedy of Bataan – Thursday, 1st, 9:00 p.m.

Travelscope: Christmas in Switzerland – Friday, 16th, 11:30 p.m.;

Trial & Heirs: Protect Your Family Fortune – Tuesday, 6th, 8:30 p.m.

Victor Borge: Comedy in Music – Monday, 5th, 10:00 p.m.;
Sunday, 11th, 8:30 p.m.

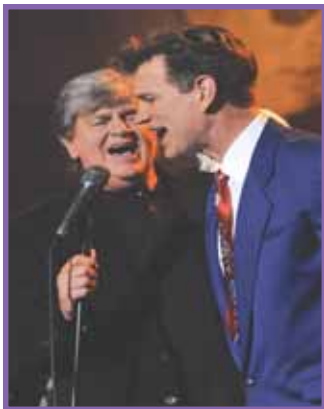
Winterfest December 2nd–11th

Buddy Holly: Listen to Me

Buddy Holly: Listen to Me – The Ultimate Buddy Party, an extraordinary concert event, was held at The Music Box in Hollywood on what would have been Holly's 75th birthday (September 7th).

Viewers enjoy a front row seat for this once-in-a-lifetime concert with an incredible line-up of performers, including Stevie Nicks, Chris Isaak, Phil Everly, Lyle Lovett, Raul Malo, and Graham Nash—rocking the house in the company of a host of superstar guests. Among them were such avowed Holly fans as Paul Anka, Boz Scaggs, Shawn Colvin, and famed guitarist Albert Lee.

Buddy Holly: Listen to Me – The Ultimate Buddy Party can be seen Monday, December 5th at 7:00 p.m. and Friday, December 9th at 8:30 p.m.



Phil Everly & Chris Isaak



Paul Simon:

Live at Webster Hall, NY

In June 2011, Paul Simon thrilled hometown fans with a special club performance at New York City's historic Webster Hall. The show was the culmination of a sold-out, two-month U.S. tour, about which *The New York Times* raved: "Salvation pursued musically." The resulting **Paul Simon: Live at Webster Hall, New York** captures this extraordinary event with Simon performing classic songs and music from his critically acclaimed new album, *So Beautiful or So What*.

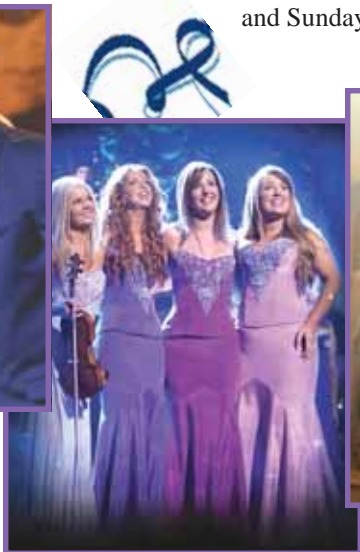
Paul Simon: Live at Webster Hall, New York airs Sunday, December 4th at 7:30 p.m. and Thursday, December 8th at 10:00 p.m.

Celtic Woman – Believe

Internationally renowned for alluring stage productions and heartwarming songs, the singing sensation **Celtic Woman** presents a new chapter of musical enchantment to be enjoyed by the entire family.

Celtic Woman – Believe stars vocalists Chloë Agnew, Lisa Kelly, Lisa Lambe, and Celtic violinist Máiréad Nesbitt, performing classic Irish songs ("The Water Is Wide," "Green Grow the Rushes," "A Woman's Heart," "The Parting Glass"), timeless pop anthems ("Bridge Over Troubled Water," "Tears in Heaven"), and inspirational songs ("You'll Never Walk Alone" and "Ave Maria").

Celtic Woman – Believe will be broadcast Saturday, December 3rd at 6:30 p.m. and Sunday, December 11th at 1:00 p.m.



Celtic Woman



The Story of Jesus

The Story of Jesus

In **The Story of Jesus**, part one, nine of the world's leading Biblical experts re-examine the Gospel accounts of Jesus's life. These experts investigate the true meaning of the 2000-year-old story of Jesus, and what it meant to his original first century followers.

Using the very latest archaeological, historical, and theological research, the program investigates the story of Jesus's birth, his childhood, the lost years of his life, the key character of John the Baptist and his influence on Jesus, and some of Jesus's key miracles, their meaning and significance.

The Story of Jesus, part one, will be broadcast Tuesday, December 6th at 7:00 p.m. and Sunday, December 11th at 7:00 p.m. on KENW-TV.

60s Pop, Rock & Soul

60s Pop, Rock & Soul is an all-new concert spectacular hosted by beloved icons Peter Noone of Herman's Hermits and Davy Jones of The Monkees.

The special features hits and favorites by Paul Revere & The Raiders ("Kicks"), Gary Lewis & The Playboys ("This Diamond Ring"), The Kingsmen ("Louie, Louie"), Jefferson Starship ("Somebody to Love"), and much more. Every song is a classic from the decade of peace, love, and profound social change.

60s Pop, Rock & Soul will be broadcast Saturday, December 3rd at 8:30 p.m. and Sunday, December 11th at 5:00 p.m.

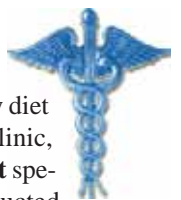
Santana – Live at Montreux 2011

Santana – Live at Montreux 2011 is a perfect display of the multi-Grammy Award-winning artist as not only an accomplished composer and band leader, but also as the incredible musician who ranks among the greatest guitarists of all time.

With a truly remarkable career that proves talent and longevity walk hand-in-hand, Carlos takes to the prestigious Montreux stage to play his impressive hit list that includes early tracks "Evil Ways" and "Jingo" from 1969, to later chart-toppers "Smooth" and "Maria Maria."

Santana – Live at Montreux 2011 airs Saturday, December 10th at 9:00 p.m.

Mayo Clinic Diet



Taken from the first and only diet book published by the Mayo Clinic, the 90-minute **Mayo Clinic Diet** special is based on research conducted under the most rigorous and exacting standards by the most respected physicians, nutritionists, and other medical experts in the world. The Mayo Clinic has identified five simple habits to help take weight off and five habits to break to keep it from coming back. The results have been tested on thousands of patients who have trusted their medical care to the Mayo Clinics.

Mayo Clinic Diet can be seen Saturday, December 3rd at 9:30 a.m.

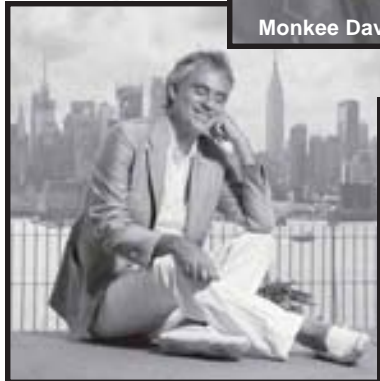
Trial and Heirs: Protect Your Family Fortune

Legacy expert attorneys Danielle and Andy Mayoras have compiled stories of highly publicized estate battles of celebrities and other wealthy individuals. But the Mayoras have a much nobler goal. Intertwined with the tabloid stories they have provided easy to follow steps to help you prepare an estate plan that will serve you and your heirs. The program includes an interview with Ray Charles Jr., who shares the story of the mistakes his famous father made with his estate and the pain the family has gone through as a result.

Trial and Heirs: Protect Your Family Fortune airs Tuesday, December 6th at 8:30 p.m.



Monkee Davy Jones



Andrea Bocelli

Andrea Bocelli in Central Park

Beloved tenor Andrea Bocelli performs a free concert on Central Park's Great Lawn, with the New York Philharmonic conducted by its music director Alan Gilbert.

In **Great Performances** "Andrea Bocelli in Central Park," Bocelli is joined on stage by Céline Dion, Tony Bennett, Chris Botti, and David Foster. Sopranos Ana María Martínez and Pretty Yende, violinist Nicola Benedetti, bass baritone Bryn Terfel, and flutist Andrea Griminelli are also part of the spectacular evening.

Great Performances "Andrea Bocelli in Central Park" airs Friday, December 2nd at 9:00 p.m. and Sunday, December 4th at 5:00 p.m.

Journey of the Universe

Decades in the making, **Journey of the Universe** invites us to become fellow travelers on a journey no previous generation could fully have imagined. Through the astonishing achievements of science, we now know more than ever before about the history of the universe and the unfolding of life on Earth. We have a detailed account of how galaxies and stars, planets and living organisms, human beings and human consciousness came to be. But what role do humans play in this 14-billion year history of the universe?

Journey of the Universe can be seen Wednesday, December 7th at 7:00 p.m.



Lucille Ball



Classic Gospel Special

Human Nature Sings Motown

In **Human Nature Sings Motown**, special guest Smokey Robinson presents the multi-million selling Australian pop group, **Human Nature**, as they take a walk through the Motown songbook. The program features the group's high-energy takes on the great sounds of vocal groups like the Four Tops, The Supremes, The Jackson Five, Martha and the Vandellas, and others. The special is a tribute to the great days of a great record label and a new look at some of pop music's most enduring anthems.

Human Nature Sings Motown airs Saturday, December 3rd at 10:30 p.m. and Thursday, December 8th at 8:30 p.m.

Lucille Ball: Finding Lucy

In the mid-1930s if you went to the movies (and everyone did) you would be sure to see Lucille Ball. Sometimes a nurse, a dancer, or a college girl, but always there. By the end of the decade, she had been in 43 films and was known as "Queen of the B Movies." But it was the small screen and her ability to "make 'em laugh" that turned her into an icon.

"Finding Lucy" on **American Masters** explores the incredible life of Lucille Ball—the first female television superstar and first female head of a major studio.

American Masters "Lucille Ball: Finding Lucy" airs Wednesday, December 7th at 10:00 p.m.

Classic Gospel Special – A Tent Revival Homecoming

Filmed under a canvas canopy on the magnificent grounds of the Billy Graham Library, the **Classic Gospel Special – A Tent Revival Homecoming** brings together 140 gospel greats to sing the songs that have transformed countless lives. Hosted by Bill Gaither, the program features a non-stop line-up of great gospel music, including performances by the Oak Ridge Boys, George Beverly Shea, The Isaacs, Elvis' Imperials, Cliff Burrows, and the Gaither Vocal Band.

Classic Gospel Special – A Tent Revival Homecoming will be broadcast Sunday, December 4th at 8:00 a.m. and Saturday, December 10th at 7:00 p.m.

Healthy Hormones: Brain/Body Fitness

Hormone health is key to regulating body weight, mood, and energy. Nearly half of those over 50 suffer from hormone imbalance, often leading to weight gain, depression, and loss of vitality. **Healthy Hormones: Brain/Body Fitness** features fitness trainer and author Teresa Tapp and *New York Times* best-selling author Mary Shomon. Learn their perspectives on the impact of hormones on health, and natural ways to balance hormones, lose weight, and reduce inflammation, the latter of which is a precursor to hormone imbalance and disease.

Healthy Hormones: Brain/Body Fitness airs Sunday, December 4th at 1:30 p.m.

Catholicism



In **Catholicism**, an epic four-part series, Father Robert Barron tells the story of Catholicism around the world—using art, architecture, literature, music, and all the riches of the Catholic tradition. The series takes viewers to some of the most magnificent and sacred sites in Jerusalem, Rome, Krakow, Warsaw, New York, Istanbul, Sinai, Nazareth, Ephesus, Lourdes, Guadalupe, Athens, Corinth, Mexico City, China, Manila, Sao Paulo, Auschwitz, Calcutta, Sydney, Philadelphia, Chicago, and beyond.

In part one, “Amazed and Afraid: The Revelation of God Become Man,” Fr. Barron illuminates the Catholic Faith’s conviction that Jesus of Nazareth is the promised Messiah.

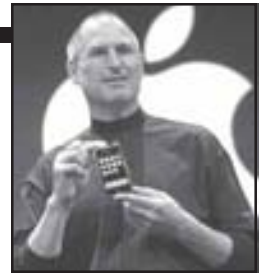
“That Than Which Nothing Greater Can Be Thought,” part two, journeys from Mt. Sinai to Paris to the glorious Sistine Chapel, as Fr. Barron presents the Catholic Faith’s compelling vision of God as the ineffable and majestic Trinity.

“Our Tainted Nature’s Solitary Boast: Mary, the Mother of God” travels to the great Marian shrines of Lourdes and Guadalupe, as Fr. Barron explains the Catholic Church’s great reverence for Mary and her unique role in the history of salvation.

Finally, in “The Indispensable Men: Peter, Paul, and the Missionary Adventure,” Fr. Barron traces the influence of these two great apostles and their enduring legacies in the life of the Church.

Catholicism can be seen Tuesdays at 10:00 p.m. beginning December 13th. The series repeats Sundays at 6:00 p.m. beginning December 18th.

Steve Jobs – One Last Thing



Through interviews with colleagues and others who knew the creative genius whose innovations transformed the lives of millions, **Steve Jobs – One Last Thing** provides an inside look at the man and the major influences that helped shape his life and career. **One Last Thing** takes an unflinching look at Jobs’s difficult, controlling disposition, and offers unique insights into what made him tick. While there has been near-universal agreement that Steve Jobs was a great innovator in business and technology, **One Last Thing** looks into *why* he was so great. What were the influences that shaped his character? What drove him from such humble beginnings to the heights of success?

In a never-before-broadcast interview from 1994, Jobs expounds on his philosophy of life: “You tend to get told that the world is the way it is, but life can be much broader once you discover one simple fact; and that is that everything around you that you call life was made up by people no smarter than you ... Once you learn that, you’ll never be the same again.”

In his many successful Apple product launches, Jobs developed his own catchphrase to tease his audiences. Appearing to reach the end of a presentation, he would then announce to the expectant crowd: “Oh — one more thing,” before unveiling his latest design achievement.

Steve Jobs – One Last Thing airs Thursday, December 15th at 7:00 p.m., Sunday, December 18th at 10:00 a.m., and Monday, December 26th at 9:00 p.m.

Two Popular Britcoms Return —

Keeping Up Appearance and Are You Being Served?

Brilliant in its tact and humor, **Keeping Up Appearances** is one of the best and most popular British sitcoms, or “Britcoms” of all time. Patricia Routledge plays Hyacinth Bucket, a woman who pretends to be upperclass but isn’t.



Patricia Routledge

To side herself with Britain’s top ten percent, Hyacinth insists her surname be pronounced “bouquet.” Her attention to cleanliness, candelight suppers, and desire to sing give pain to her husband, Richard, and neighbors.

Hyacinth, who once wrote a book of “Etiquette for the Socially Less-Fortunate,” wants to give her skills to anyone she meets: the vicar, the postman, the milkman. She shudders to think of her poor father living in a run-down house with her sister, Daisy, and her husband, Onslow.

Keeping Up Appearances airs Saturdays at 8:00 p.m. beginning December 17th.

Are You Being Served? and the ridiculous goings-on at Grace Bros. have kept audiences laughing since 1973.

A large, old-fashioned department store in London, Grace Bros. is still run on strictly hierarchical lines. Each member of staff knows their place—in theory. In practice, they are all engaged in their own private wars with management and with each other. On the top floor is young Mr. Grace, a frail octogenarian. Mr. Rumbold is manager of the clothing department and Captain Peacock is his snooty shop-walker. In Gentlemen’s Ready-To-Wear is Mr. Humphries, played by John Inman, and Ladies’ Separates and Underwear is staffed by Mrs. Slocombe (Mollie Sugden), a rapacious widow with an astonishing range of hair colors.

Are You Being Served? can be seen Saturdays at 8:30 p.m. beginning December 17th.



Coldplay’s New Year’s Eve: Austin City Limits Special

Modern rock giants Coldplay ring in the new year with an **Austin City Limits** New Year’s Eve special highlighting their mega-hits and songs from their newest LP, *Mylo Xylo*. This 90-minute holiday celebration captures the excitement and energy of the Grammy-winning band of worldwide acclaim.

Coldplay’s New Year’s Eve: An Austin City Limits Special can be seen Saturday, December 31st at 9:00 p.m. and 11:30 p.m.



Eames: The Architect and the Painter

American Masters premieres “Eames: The Architect and the Painter.” From 1941 to 1978, the husband-and-wife team of Ray and Charles Eames

brought unique talents to their partnership. He was an architect by training; she was a painter and sculptor. Together, they are considered America’s most important and influ-

ential designers, whose work helped shape, literally, the second half of the 20th century and remains culturally vital and commercially popular today.

The Eames are, perhaps, best remembered for their mid-century modern furniture, built from novel materials like molded plywood, fiberglass-reinforced plastic, bent metal wire, and aluminum—offering consumers beautiful, functional, yet inexpensive products. Revered for their designs and fascinating as individuals, the Eames have risen to iconic status in American culture, but their influence on significant events and movements in American life—from the development of modernism to the rise of the computer age—has been less widely understood.

American Masters “Eames: The Architect and the Painter” will be broadcast Monday, December 19th at 9:00 p.m.



Life Focus “Living by the Book”

When atheist, A.J. Jacobs, a New York journalist and author of *The Year of Living Biblically*, and Ed Dobson, an evangelical pastor diagnosed with ALS and author (*The Year of Living Like Jesus*) decided to devote a year to emulating Jesus’ life and teaching, they changed every aspect of their lives. Dobson had to reexamine many of his beliefs and generally change his entire lifestyle to accomplish his goal. This unconventional half-hour program examines how two men with opposite backgrounds took a sometimes humorous, sometimes serious path and came to surprising and unlikely conclusions.

Life Focus “Living by the Book” airs Sunday, December 11th at 11:30 p.m. and Sunday, December 25th at 1:30 p.m.

Bob Ross: The Happy Painter

Bob Ross: The Happy Painter presents an intimate look at the beloved public television personality’s journey from humble beginnings to an American pop-culture icon. The hour-long special reveals the public and private sides of Bob Ross through loving accounts from close friends and family who recount his gentle, mild-mannered demeanor and unwavering dedication to wildlife, and disclose little-known facts about his hair, his fascination with fast cars, and more.



Bob Ross enthusiasts, including talk-show host Phil Donahue, film star Jane Seymour, and country music legend Brad Paisley provide fascinating insights into the man and the artist.

Bob Ross: The Happy Painter can be seen Saturday, December 17th at 11:30 a.m.

The Tragedy of Bataan

Alec Baldwin narrates **The Tragedy of Bataan**, a half-hour documentary that

chronicles the fall of the Philippines and then the Bataan Death March in the early months of World



War II. The program contains first-person interviews with over twenty former survivors of the conflict. Between 5,000 and 15,000 of more than 75,000 American and Filipino prisoners did not survive the 65-mile march following the fall of the Philippines to the Japanese in the spring of 1942.

This poignant story is also told by several unpublished diaries, rare photos and drawings, and never-before-seen Japanese propaganda film footage.

The Tragedy of Bataan will be broadcast Thursday, December 1st at 9:00 p.m.

Marching Once More: 60 Years After the Battle of the Bulge

In what stands as one of the last, large gatherings of World War II veterans, **Marching Once More: 60 Years After the Battle of the Bulge** follows more than 100 survivors of the Battle of the Bulge as they return to Belgium and Luxembourg and reflect on the brutal six-week battle that claimed more than 19,000 American lives. The one-hour documentary captures the veterans’ 2004 journey, including their uncertainty as to whether anyone would remember or care about the events that occurred 60 years earlier. To their surprise, the people of Belgium and Luxembourg treated them like celebrities: a king presented medals, a royal family laid wreaths in honor of the fallen, and crowds clamored for autographs and to perhaps, for the last time, thank their liberators.

Marching Once More can be seen Monday, December 12th at 9:00 p.m.



Don’t become a victim of scams. KENW-TV presents **Scam Alert, A Consumer Protection Special**. This hour-long live call-in program allows viewers the opportunity to call the KENW studio and direct questions to a panel of experts on the subject of scams. The panel members consist of a representative of the New Mexico Attorney General’s Office, a District Attorney prosecutor, a Bank representative, and a local police Deputy Chief.

“Scam Alert” addresses many different types of scams, including identity theft, investment scams, telephone solicitors, computer emails, and fly-by-night contractors, to name a few.

Tune in and learn how you can protect yourself. **Scam Alert** airs “live” Thursday evening, December 1st at 7:00 p.m.



◆ KENW-TV's DAYTIME SCHEDULES ◆

Kids' Programming, How-to's, and Family Viewing

3-2 (SD) is your regular KENW-TV channel. Channels 3-1 (HD) and 3-3 (SD) require a digital television or a converter box, both with antennas.

Channel 3-2

Monday through Friday

6:00 am	Classical Stretch
6:30 am	BBC World News
7:00 am	Sesame Street
8:00 am	Dinosaur Train
8:30 am	Barney and Friends (MWF) Curious George (TuTh)
9:00 am	Super WHY!
9:30 am	Cat in the Hat
10:00 am	Sid the Science Kid
10:30 am	Hey Kids, Let's Cook! (M) Imagination Station (Tu) Angelina Ballerina (W) Signing Time! (Th) Mister Rogers (F)
11:00 am	Cook's Country from ATK (M) Pati's Mexican Table (Tu) New Fly Fisher (W) Woodsmith Shop (Th) Bob the Builder (F)
11:30 am	Savor the Southwest (M) Knitting Daily (Tu) Fly Tying: The Angler's Art (W) Taste of History (Th) Thomas & Friends (F)
12:00 pm	Sit and Be Fit (MWF) Creative Living (TuTh)
12:30 pm	Beads, Baubles and Jewels (M) Sew It All (Tu) Scrapbook Memories (W) Welcome to My Studio (Th) Beauty of Oil Painting (F)
1:00 pm	WordWorld
1:30 pm	Clifford the Big Red Dog
2:00 pm	Maya & Miguel (MWF) Martha Speaks (TuTh)
2:30 pm	Arthur
3:00 pm	Electric Company
3:30 pm	Fetch! with Ruff Ruffman
4:00 pm	Wild Kratts
4:30 pm	BBC World News
5:00 pm	Inside Washington (M) Scully/The World News (Tu) World Business (W) European Journal (Th) BBC Newsnight (F)
5:30 pm	Nightly Business Report
6:00 pm	PBS NewsHour

Channel 3-3

Monday through Friday

6:00 am	Curious George
6:30 am	Cat in the Hat
7:00 am	Super WHY!
7:30 am	Dinosaur Train
8:00 am	Sesame Street
9:00 am	Sid the Science Kid
9:30 am	WordWorld
10:00 am	Martha Speaks
10:30 am	Barney & Friends
11:00 am	Caillou
11:30 am	Clifford the Big Red Dog
12:00 pm	Mister Rogers (M) Peep & the Big Wide World (Tu) Wild Animal Baby Explorers (W) Signing Time! (Th) Wunderkind Little Amadeus (F)
12:30 pm	Bob the Builder (M) Thomas & Friends (Tu) Angelina Ballerina (W) Enviropals! (Th) Hey Kids, Let's Cook! (F)
1:00 pm	Maya & Miguel
1:30 pm	Martha Speaks
2:00 pm	Arthur
2:30 pm	WordGirl
3:00 pm	Wild Kratts
3:30 pm	Electric Company
4:00 pm	Fetch! with Ruff Ruffman
4:30 pm	Thomas & Friends (M) Angelina Ballerina (Tu) Bob the Builder (W) Curious George (Th) Raggs (F)
5:00 pm	Wunderkind Little Amadeus (M) Wild Animal Baby Explorers (Tu) Peep & the Big Wide World (W) Hands on Crafts (Th) Zula Patrol (F)
5:30 pm	Anne of Green Gables (M) Dragonfly TV (Tu) Imagination Station (W) Curiosity Quest (Th) Signing Time! (F)
6:00 pm	Cat in the Hat
6:30 pm	SuperWhy!
7:00 pm	WordWorld
7:30 pm	Electric Company
8:00 pm	Wild Kratts
8:30 pm	Fetch!

Saturday

6:00 AM	Super WHY!
6:30 am	Dinosaur Train
7:00 am	Thomas & Friends
7:30 am	Angelina Ballerina
8:00 am	Bob the Builder
8:30 am	Sid the Science Kid
9:00 am	Martha Speaks
9:30 am	Arthur
10:00 am	Electric Company
10:30 am	Fetch! with Ruff Ruffman
11:00 am	WordGirl
11:30 am	Cyberchase
12:00 pm	Wild Kratts
12:30 pm	Maya & Miguel
1:00 pm	Curious George
1:30 pm	Cat in the Hat
2:00 pm	Peep & the Big Wide World
2:30 pm	WordWorld
3:00 pm	Caillou
3:30 pm	Clifford the Big Red Dog
4:00 pm	Zula Patrol
4:30 pm	Hey Kids, Let's Cook!
5:00 pm	Signing Time!
5:30 pm	Wild Animal Baby Explorers
6:00 pm	Wild Kratts
6:30 pm	Fetch!
7:00 pm	Curiosity Quest
7:30 pm	Dragonfly TV
8:00 pm	Imagination Station
8:30 pm	Electric Company

Sunday

6:00 am	Super WHY!
6:30 am	Dinosaur Train
7:00 am	Sid the Science Kid
7:30 am	Martha Speaks
8:00 am	Arthur
8:30 am	WordGirl
9:00 am	Wild Kratts
9:30 am	Electric Company
10:00 am	Cyberchase
10:30 am	Fetch!
11:00 am	Dragonfly TV
11:30 am	Hands on Crafts for Kids
12:00 pm	Curiosity Quest
12:30 pm	Imagination Station
1:00 pm	Hey Kids, Let's Cook
1:30 pm	Signing Time!
2:00 pm	Wild Animal Baby Explorers
2:30 pm	Raggs
3:00 pm	Enviropals!
3:30 pm	Curious George
4:00 pm	Cat in the Hat
4:30 pm	Peep & the Big Wide World
5:00 pm	WordWorld
5:30 pm	Caillou
6:00 pm	Clifford the Big Red Dog
6:30 pm	Bob the Builder
7:00 pm	Thomas & Friends
7:30 pm	Angelina Ballerina
8:00 pm	Maya & Miguel
8:30 pm	Biz Kid\$

Channel 3-1

Saturday

5:00 am	Mister Rogers
5:30 am	Bob the Builder
6:00 am	Curious George
6:30 am	Cat in the Hat
7:00 am	Super WHY!
7:30 am	Dinosaur Train
8:00 am	Thomas & Friends
8:30 am	Angelina Ballerina

Sunday

5:00 am	Sesame Street
6:00 am	Curious George
6:30 am	Cat in the Hat
7:00 am	Super WHY!
7:30 am	Dinosaur Train
8:00 am	Sid the Science Kid
8:30 am	Martha Speaks
9:00 am	Arthur
9:30 am	WordGirl
10:00 am	Wild Kratts
10:30 am	Electric Company
11:00 am	Cyberchase
11:30 am	Fetch! with Ruff Ruffman

KENW TV SCHEDULES 3-1 (HD), 3-2 (SD) AND 3-3 (SD)

Our regular KENW-TV Channel (3-2) is listed below in bold. It can be seen by those who use cable or one of our analog translators listed on page 3. Schedule 3-1 is our High Definition (HD) Channel and 3-3 is our Children's/Encore Standard Definition (SD) Channel. Those with either digital TV sets or analog sets with converter boxes (both sets require antennas) can receive all three channels in most parts of our viewing area. KENW-TV has digital transmitters in the following cities: Clovis/Portales; Hobbs/Lovington; Roswell; Artesia; Fort Sumner; Tucumcari; and now Carlsbad! This service is not yet available in Ruidoso.

**KENW-TV is on DirecTV Channel 3 in most counties of New Mexico,
both in High Definition (3-1) and Standard Definition (3-2).
KENW-TV is also now on Dish Network Standard Definition Channel 3 (3-2).**

Thursday 1st

- 5:00 3-1 *BBC World News*
- 5:30 3-1 *Closer to Truth*
- 6:00 3-1 *Teaching Channel*
- 7:00 3-1 *Nature*
- 8:00 3-1 *Grove*
- 9:00 3-1 *It's Sew Easy*
- 9:30 3-1 *Quilting Arts*
- 10:00 3-1 *Katie Brown Workshop*
- 10:30 3-1 *Knit & Crochet Today*
- 11:00 3-1 *Antiques Roadshow*
- 12:00 3-1 *Nature*
- 1:00 3-1 *Grove*
- 2:00 3-1 *Anyone and Everyone*
- 3:00 3-1 *Miller Center Forums*
- 4:00 3-1 *Closer to Truth*
- 4:30 3-1 *European Journal*
- 5:00 3-1 *BBC World News America*
- 5:30 3-1 *Nightly Business Report*
- 6:00 3-1 *PBS NewsHour*
- 7:00 **KENW-TV Call-In "Scam Alert"**
3-1 *Antiques Roadshow*
- 8:00 **Song of the Mountains**
3-1 *This Old House Hour*
- 9:00 **Tragedy of Bataan**
3-1 *Creative Living*
3-3 *Charlie Rose*
- 9:30 **Red Green Show "Out of the Woods"**
3-1 *You Should Know*
- 10:00 **Woodsongs**
"Emmylou Harris, Darrell Scott"
3-1 *Charlie Rose*
3-3 *Teaching Channel*
- 11:00 **Charlie Rose**
3-1 *Tavis Smiley*
3-3 *Grove*
- 12:00 **PBS NewsHour**
3-1 *This Old House Hour*
3-3 *Anyone and Everyone*

Friday 2nd

- 5:00 3-1 *BBC World News*
- 5:30 3-1 *P. Allen Smith's Garden Home*
- 6:00 3-1 *Song of the Mountains*
- 7:00 3-1 *Jubilee*
- 8:00 3-1 *This Old House Hour*
- 9:00 3-1 *Globe Trekker*
- 10:00 3-1 *Gary Spetz's Painting Wild Places*
- 10:30 3-1 *Paint This with Jerry Yarnell*
- 11:00 3-1 *Whispers of Angels: A Story of the Underground Railroad*
- 12:00 3-1 *Music Voyager*
- 12:30 3-1 *Bluegrass Underground*
- 1:00 3-1 *Woodsongs*
- 2:00 3-1 *This Old House Hour*
- 3:00 3-1 *Globe Trekker*

- 4:00 3-1 *P. Allen Smith's Garden Home*
- 4:30 3-1 *BBC Newsnight*
- 5:00 3-1 *BBC World News America*
- 5:30 3-1 *Nightly Business Report*
- 6:00 3-1 *PBS NewsHour*
- 7:00 **Market to Market**
3-1 *Washington Week*
- 7:30 **Consuelo Mack WealthTrack**
3-1 *Need to Know*
- 8:00 **Washington Week**
3-1 *PBS Arts from New York*
- 8:30 **Need to Know**
- 9:00 **PBS Arts from New York: Great Performances Andrea Bocelli**
3-3 *Charlie Rose*
- 10:00 3-3 *Adopted: For the Life of Me*
- 10:30 3-1 *Smitten*
- 11:00 3-1 *Tavis Smiley*
3-3 *History Detectives*
- 11:30 **Body's Secret Army**
- 12:00 **PBS NewsHour**
3-1 *Washington Week*
3-3 *Independent Lens*

Saturday 3rd

- 6:00 **Woodsmith Shop**
"Picture-Perfect Miters"
- 6:30 **American Woodshop**
"Windsor Arrow Back Chairs"
- 7:00 **Taste of History**
"Continental Congress & Constitutional Convention"
- 7:30 **Baking Made Easy "Flat Breads All Day"**
- 8:00 **Cook's Country "Southern Classics"**
- 8:30 **Pati's Mexican Table "Avocado"**
- 9:00 **Woodturning Workshop "Green Bowl"**
3-1 *This Old House Hour*
- 9:30 **Mayo Clinic Diet**
- 10:00 3-1 *Antiques Roadshow*
- 10:57 **Star Gazers**
- 11:00 **Paint This with Jerry Yarnell**
"Osage Prairie Summer, Pt. 5"
3-1 *Baking with Julia*
- 11:30 **Joy of Painting**
3-1 *Victory Garden*
- 12:00 **Beauty of Oil Painting "Lily"**
3-1 *This Old House*
- 12:30 **Quilt in a Day "Victorian Tea Time"**
3-1 *This Old House*
- 1:00 **Quilting Arts "Quilt Design"**
3-1 *Ask This Old House*
- 1:30 **Fons & Porter's Love of Quilting**
"Baby Needs a Quilt"
3-1 *Hometime*
- 2:00 **Creative Living**
3-1 *Woodwright's Shop*
- 2:30 **Scrapbook Soup**
3-1 *Motorweek*
- 3:00 **Hometime "Microscapes 1"**
3-1 *History Detectives*
- 3:30 **This Old House "Bedford Project, Pt. 9"**
- 4:00 **Ask This Old House**
3-1 *Nova*
- 4:30 **Sewing with Nancy: Sewing A to Z**
- 5:00 3-1 *Through a Dog's Eyes*
- 6:00 **Report from Santa Fe**
3-1 *Antiques Roadshow*

KENW-TV on Cable Companies

KENW-TV's 3-1 (High Definition, HD) and 3-2 (Standard Definition, SD) program schedules can be seen on the following cable companies:

- Dexter: Channel 3 (SD) and Channel 470 (HD), Cable One
- Hobbs: Channel 3 (SD) and Channel 703 (HD), U.S. Cable
- Portales: Channel 3 (SD), and Channel 510 (HD), Comcast Cable
- Roswell: Channel 3 (SD), and Channel 470 (HD), Cable One

KENW-TV's 3-2 Schedule (Standard Definition, SD) can be seen on the following cable companies:

- Artesia: Channel 3, PVT
- Carlsbad: Channel 3, U.S. Cable
- Clovis: Channel 3, Suddenlink
- Dexter: Channel 3, PVT
- Eddy County South: Channel 3, U.S. Cable
- Eunice: Channel 3, U.S. Cable
- Farwell: Channel 3, Suddenlink
- Ft. Sumner: Channel 3, Reach Broadband
- Hagerman: Channel 3, PVT
- Jal: Channel 3, U.S. Cable
- Lea County: Channel 3, U.S. Cable
- Loving: Channel 3, U.S. Cable
- Lovington: Channel 3, Comcast
- Melrose: Channel 9, Reach Broadband
- Muleshoe: Channel 5, Reach Broadband
- Texico: Channel 3, Suddenlink
- Tucumcari: Channel 11, Comcast

6:30 Celtic Woman — Believe
 7:00 3-1 *Secrets of the Dead*
 8:00 3-1 *Victor Borge: Comedy in Music!*
8:30 60s Pop, Rock & Soul
 3-1 *Straight No Chaser – Songs of the Decades: Holiday*
 9:00 3-3 *Lawrence Welk Show*
9:57 Star Gazers
 10:00 3-1 *Austin City Limits*
 3-3 *Classic Gospel*
10:30 Human Nature Sings Motown
 11:00 3-1 *Nature*
 3-3 *Jubilee*
12:00 Austin City Limits “Spoon”
 3-1 *Nova*
 3-3 *Live from the Artists Den*

Sunday 4th

6:00 Travelscope “Thailand – From Golden Triangle to White Sands”
6:30 Second Opinion “Colon Cancer”
7:00 Antiques Roadshow
 “Madison, WI, Pt. 1”
8:00 Classic Gospel Special – A Tent Revival Homecoming
10:00 Historic Walks
11:30 Suze Orman’s Money Class
 12:00 3-1 *Need to Know*
 12:30 3-1 *Washington Week*
 1:00 3-1 *Religion & Ethics Newsweekly*
1:30 Healthy Hormones: Brain-Body Fitness
 3-1 *To the Contrary*
 2:00 3-1 *This Old House Hour*
2:30 Easy Yoga for Arthritis
2:57 Star Gazers
 3:00 3-1 *Through a Dog’s Eyes*
3:30 Religion & Ethics Newsweekly
4:00 Classic Gospel
 “Billy Graham Music Homecoming”
 3-1 *Herbert Hoover: Landslide*
5:00 PBS Arts from New York: Great Performances Andrea Bocelli
 3-1 *History Detectives*
 6:00 3-1 *Nova*
 7:00 3-1 *Nature*
7:30 Paul Simon: Live at Webster Hall, New York
 8:00 3-1 *Masterpiece Classic*
9:00 Scala & Kolachy Brothers
 3-3 *Smart Travels – Europe*
 9:30 3-1 *Santana: Live at Montreux 2011*
 3-3 *This American Land*
 10:00 3-3 *Amtrak: The First 40 Years*
10:30 Grand Canyon Serenade
 11:00 3-1 *Nature*
 3-3 *Masterpiece Classic*
11:30 Official Best of Fest “Love IX”
11:57 Star Gazers
12:00 Nova
 “The Incredible Journey of the Butterflies”
 3-1 *Masterpiece Classic*

Monday 5th

5:00 3-1 *BBC World News*
 5:30 3-1 *America’s Heartland*
 6:00 3-1 *Nova*
 7:00 3-1 *Masterpiece Classic*
 8:30 3-1 *European Christmas Markets*
 9:00 3-1 *Savor the Southwest*
 9:30 3-1 *America’s Test Kitchen*
 10:00 3-1 *Taste of History*
 10:30 3-1 *Bake Decorate Celebrate!*

11:00 3-1 *How to Shop for Free with Coupon*
 Master Kathy Spencer
 12:00 3-1 *Nova*
 1:00 3-1 *Masterpiece Classic*
 2:30 3-1 *European Christmas Markets*
 3:00 3-1 *Travelscope*
 3:30 3-1 *Painting and Travel*
 4:00 3-1 *America’s Heartland*
 4:30 3-1 *Inside Washington*
 5:00 3-1 *BBC World News America*
 5:30 3-1 *Nightly Business Report*
 6:00 3-1 *PBS NewsHour*
7:00 Buddy Holly: Listen to Me
 3-1 *Antiques Roadshow*
 8:00 3-1 *Human Nature Sings Motown*
8:30 Daniel O’Donnell Live from Nashville
 9:00 3-3 *Charlie Rose*
 9:30 3-1 *European Christmas Markets*
10:00 Victor Borge: Comedy in Music
 3-1 *Charlie Rose*
 3-3 *Antiques Roadshow*
10:30 Official Best of Fest “Love VII”
10:57 Star Gazers
11:00 Antiques Roadshow
 “Madison, WI, Pt. 2”
 3-1 *Tavis Smiley*
 3-3 *National Christmas Tree Lighting 2011*
12:00 PBS NewsHour
 3-1 *Albert Hubbard: An American Original*
 3-3 *Great Museums*

Tuesday 6th

5:00 3-1 *BBC World News*
 5:30 3-1 *Religion & Ethics Newsweekly*
 6:00 3-1 *Antiques Roadshow*
 7:00 3-1 *National Christmas Tree Lighting 2011*
 8:00 3-1 *Story of Jesus*
 9:30 3-1 *Religion & Ethics Newsweekly*
 10:00 3-1 *Closer to Truth*
 10:30 3-1 *Everyday Edisons*
 11:00 3-1 *Song of the Mountains*
 12:00 3-1 *Antiques Roadshow*
 1:00 3-1 *National Christmas Tree Lighting 2011*
 2:00 3-1 *Christmas with the Celts*
 3:30 3-1 *Travel with Kids*
 4:00 3-1 *Consuelo Mack WealthTrack*
 4:30 3-1 *Scully/ The World Show*
 5:00 3-1 *BBC World News America*
 5:30 3-1 *Nightly Business Report*
 6:00 3-1 *PBS NewsHour*
7:00 Story of Jesus
 3-1 *Healthy Hormones: Brain-Body Fitness*
 8:00 3-1 *Frontline “Madoff Affair”*
8:30 Trial & Heirs: Protect Your Family Fortune
 9:00 3-1 *Note by Note*
 3-3 *Charlie Rose*
10:00 How to Shop for Free with Coupon
 Master Kathy Spencer
 3-1 *Charlie Rose*
 3-3 *Secrets of the Dead*
11:00 Charlie Rose
 3-1 *Tavis Smiley*
 3-3 *Whispers of Angels: Underground Railroad*
12:00 PBS NewsHour
 3-1 *Frontline*
 3-3 *Enola Gay’s Navigator*

Wednesday 7th

5:00 3-1 *BBC World News*
 5:30 3-1 *Healthy Body Healthy Mind*
 6:00 3-1 *Home and Hearth: The Crane Candlelight Concert*
 7:00 3-1 *Google World*
 8:00 3-1 *Historic Walks*
 9:30 3-1 *Tracks Ahead*
 10:00 3-1 *Rough Cut: Woodworking*
 10:30 3-1 *Woodturning Workshop*
 11:00 3-1 *Enola Gay’s Navigator*
 12:00 3-1 *Home and Hearth: The Crane Candlelight Concert*
 1:00 3-1 *Google World*
 2:00 3-1 *Misunderstood Epidemic: Depression*
 3:00 3-1 *Jazzy Vegetarian*
 3:30 3-1 *America’s Test Kitchen*
 4:00 3-1 *Growing a Greener World*
 4:30 3-1 *McLaughlin Group*
 5:00 3-1 *BBC World News America*
 5:30 3-1 *Nightly Business Report*
 6:00 3-1 *PBS NewsHour*
7:00 Journey of the Universe
 3-1 *Nature*
 8:00 3-1 *Celtic Woman – Believe*
8:30 Straight No Chaser – Songs of the Decades: Holiday
 9:00 3-3 *Charlie Rose*
10:00 American Masters
 “Lucille Ball: Finding Lucy”
 3-1 *Charlie Rose*
 3-3 *Nature*
 11:00 3-1 *Tavis Smiley*
 3-3 *Nova*
11:57 Star Gazers
12:00 PBS NewsHour
 3-1 *Nature*
 3-3 *Misunderstood Epidemic: Depression*

Thursday 8th

5:00 3-1 *BBC World News*
 5:30 3-1 *Closer to Truth*
 6:00 3-1 *Teaching Channel*
 7:00 3-1 *Nature*
 8:00 3-1 *Program About Unusual Buildings*
 9:00 3-1 *It’s Sew Easy*
 9:30 3-1 *Quilting Arts*
 10:00 3-1 *Katie Brown Workshop*
 10:30 3-1 *Knit & Crochet Today*
 11:00 3-1 *Antiques Roadshow*
 12:00 3-1 *Nature*
 1:00 3-1 *Mayo Clinic Diet*
 2:30 3-1 *Home Fields: Digging into Local Food*
 3:00 3-1 *Miller Center Forums*
 4:00 3-1 *Closer to Truth*
 4:30 3-1 *European Journal*
 5:00 3-1 *BBC World News America*
 5:30 3-1 *Nightly Business Report*
 6:00 3-1 *PBS NewsHour*
7:00 Christmas with the Celts
 3-1 *Buddy Holly: Listen to Me*
8:30 Human Nature Sings Motown
 3-1 *Wayne Henderson: From Wood to Singing Guitar*
 9:00 3-1 *John Denver Rocky Mountain High Live in Japan*
 3-3 *Charlie Rose*
10:00 Paul Simon: Live at Webster Hall, New York
 3-1 *Charlie Rose*
 3-3 *Teaching Channel*

11:00 3-1 Tavis Smiley
3-3 Program About Unusual Buildings
11:30 Charlie Rose
12:00 3-1 This Old House Hour
3-3 Flea Market Documentary
12:30 PBS NewsHour

Friday 9th

5:00 3-1 BBC World News
5:30 3-1 P. Allen Smith's Garden Home
6:00 3-1 Song of the Mountains
7:00 3-1 Jubilee
8:00 3-1 This Old House Hour
9:00 3-1 Globe Trekker
10:00 3-1 Gary Spetz's Painting Wild Places
10:30 3-1 Paint This with Jerry Yarnell
11:00 3-1 Allen Toussaint:
The Soul of New Orleans
12:00 3-1 Classic Gospel Special:
A Tent Revival Homecoming
2:00 3-1 This Old House Hour
3:00 3-1 Globe Trekker
4:00 3-1 P. Allen Smith's Garden Home
4:30 3-1 BBC Newsnight
5:00 3-1 BBC World News America
5:30 3-1 Nightly Business Report
6:00 3-1 PBS NewsHour
7:00 Market to Market
3-1 Washington Week
7:30 Consuelo Mack WealthTrack
3-1 Need to Know
8:00 Washington Week
3-1 PBS Arts from Seattle: Pearl Jam
8:30 Buddy Holly: Listen to Me
9:00 3-3 Charlie Rose
10:00 Legends of Folk: The Village Scene
3-1 Charlie Rose
3-3 Home and Hearth:
The Crane Candlelight Concert
11:00 3-1 Tavis Smiley
3-3 History Detectives
11:30 European Christmas Markets
12:00 PBS NewsHour
3-1 Washington Week
3-3 Independent Lens

Saturday 10th

6:00 Woodsmith Shop "Cherry Console"
6:30 American Woodshop
"Nested Band Sawn Boxes"
7:00 Taste of History "Weekend Warriors"
7:30 Baking Made Easy
"Christmas Breads for the Holidays"
8:00 Cook's Country "Retro Desserts"
8:30 Pati's Mexican Table "Tomatillos"
9:00 Woodturning Workshop
"Dried Bowl/AAW"
3-1 This Old House Hour
9:30 Motorweek
10:00 P. Allen Smith's Garden Home
"Really Great Roses"
3-1 Antiques Roadshow
10:30 Victory Garden
"Easy: Simplify Your Garden"
10:57 Star Gazers
11:00 Paint This with Jerry Yarnell
"Autumn's Delight, Pt. 1"
3-1 Baking with Julia
11:30 Joy of Painting "Double Take"
3-1 Victory Garden
12:00 Beauty of Oil Painting
"Blue and Gold Macaw"
3-1 This Old House

12:30 Quilt in a Day
"Wallhanging-Saint Nicholas"
3-1 This Old House
1:00 Quilting Arts "Upcycling"
3-1 Ask This Old House
1:30 Fons & Porter's Love of Quilting
"Curved Paper Piecing"
3-1 Hometime
2:00 Creative Living
3-1 Woodwright's Shop
2:30 Scrapbook Soup
3-1 Motorweek
3:00 Hometime "Microscapes 2"
3-1 Nova
3:30 This Old House "Bedford Project, Pt. 10"
4:00 Ask This Old House
4:30 Welcome to My Studio
"The Three Properties of Color"
5:00 Sewing with Nancy
"Upcycled Shirts, Pt. 2"
3-1 Elbert Hubbard:
An American Original
5:30 Sew it All "Thread Bowl-erama"
6:00 Report from Santa Fe
3-1 Antiques Roadshow
6:30 America's Heartland
7:00 Classic Gospel Special –
A Tent Revival Homecoming
3-1 PBS Arts from Seattle: Pearl Jam
9:00 Santana – Live at Montreux 2011
3-1 Note by Note
3-3 Lawrence Welk Show
9:57 Star Gazers
10:00 3-1 Austin City Limits
3-3 Classic Gospel
10:30 Straight No Chaser –
Songs of the Decades: Holiday
11:00 3-1 Nature
3-3 Jubilee
12:00 Austin City Limits
"Patty Griffin & Friends"
3-1 Nova
3-3 Live from the Artists Den

Sunday 11th

6:00 Travelscope "Fredericksburg, TX"
6:30 Second Opinion "Skin Cancer"
7:00 Antiques Roadshow
"Madison, WI, Pt. 2"
8:00 Classic Gospel
"A Billy Graham Music Homecoming"
9:00 Joy of Music
"Mozart – The Man and His Music"
9:30 Joy of Music "Cathedral Christmas"
10:00 Financial Fitness After 50
11:30 3 Steps to Incredible Health
12:00 3-1 Need to Know
12:30 3-1 Washington Week
1:00 Celtic Woman – Believe
3-1 Religion & Ethics Newsweekly
1:30 3-1 To the Contrary
2:00 3-1 This Old House Hour
2:57 Star Gazers
3:00 Healthy Body Healthy Mind
"Preventing Preterm Birth"
3-1 Note by Note
3:30 Religion & Ethics Newsweekly
4:00 Classic Gospel
"A Tribute to George Yonce"
3-1 Through a Dog's Eyes
5:00 60s Pop, Rock & Soul
3-1 Nova
7:00 Story of Jesus
3-1 Nature

8:00 3-1 Masterpiece Classic
8:30 Victor Borge: Comedy in Music
3-3 Smart Travels – Europe
9:30 3-1 Sky Island
3-3 This American Land
10:00 Blitz: London's Longest Night
3-1 Austin City Limits
3-3 Mysteries of the Jesus Prayer
11:00 3-1 Nature
3-3 Masterpiece Classic
11:30 Life Focus "Living by the Book"
11:57 Star Gazers
12:00 Nova "Darwin's Darkest Hour"
3-1 Masterpiece Classic

Monday 12th

5:00 3-1 BBC World News
5:30 3-1 America's Heartland
6:00 3-1 Mysteries of the Jesus Prayer
7:00 3-1 Masterpiece Classic
8:30 3-1 Ring in the Season with
Mormon Tabernacle Choir
9:00 3-1 Savor the Southwest
9:30 3-1 Baking Made Easy
10:00 3-1 Taste of History
10:30 3-1 Bake Decorate Celebrate!
11:00 3-1 Adventists
12:00 3-1 Mysteries of the Jesus Prayer
1:00 3-1 Masterpiece Classic
2:30 3-1 Ring in the Season with
Mormon Tabernacle Choir
3:00 3-1 Travelscope
3:30 3-1 Getting Away Together
4:00 3-1 America's Heartland
4:30 3-1 Inside Washington
5:00 3-1 BBC World News America
5:30 3-1 Nightly Business Report
6:00 3-1 PBS NewsHour
7:00 Antiques Roadshow
"Madison, WI, Pt. 3"
3-1 Antiques Roadshow
8:00 Antiques Roadshow
"Denver, CO, Pt. 3"
3-1 Antiques Roadshow
9:00 Marching Once More: 60 Years After
the Battle of the Bulge
3-1 Forgotten Ellis Island
3-3 Charlie Rose
10:00 Rio Grande Ski Train:
A Denver Tradition
3-1 Charlie Rose
3-3 Antiques Roadshow
10:27 Star Gazers
10:30 Official Best of Fest "Love IX"
11:00 Antiques Roadshow
3-1 Tavis Smiley
3-3 Three Faiths, One God: Judaism,
Christianity, Islam, Pt. 1
12:00 PBS NewsHour
3-1 Forgotten Ellis Island
3-3 Three Faiths, One God, Pt. 2

Tuesday 13th

5:00 3-1 BBC World News
5:30 3-1 Religion & Ethics Newsweekly
6:00 3-1 Antiques Roadshow
7:00 3-1 Three Faiths, One God:
Judaism, Christianity, Islam, Pt. 1
8:00 3-1 Three Faiths, One God, Pt. 2
9:00 3-1 Healthy Body Healthy Mind
9:30 3-1 Religion & Ethics Newsweekly
10:00 3-1 Closer to Truth
10:30 3-1 Everyday Edisons

11:00 3-1 *Song of the Mountains*
 12:00 3-1 *Antiques Roadshow*
 1:00 3-1 *Three Faiths, One God, Pt. 1*
 2:00 3-1 *Three Faiths, One God, Pt. 2*
 3:00 3-1 *Music Voyager*
 3:30 3-1 *Travel with Kids*
 4:00 3-1 *Consuelo Mack WealthTrack*
 4:30 3-1 *Scully/ The World Show*
 5:00 3-1 *BBC World News America*
 5:30 3-1 *Nightly Business Report*
 6:00 3-1 *PBS NewsHour*
7:00 Christmas with the Mormon Tabernacle Choir
 3-1 *Christmas with the Mormon Tabernacle Choir*
8:00 Frontline "From Jesus to Christ: The First Christians," Pt. 1
 3-1 *L.A. Holiday Celebration 2011*
 9:00 3-1 *Frontline*
 3-3 *Charlie Rose*
10:00 Catholicism "Amazed and Afraid: The Revelation of God Become Man in Christ"
 3-3 *Secrets of the Dead*
11:00 Charlie Rose
 3-1 *Tavis Smiley*
 3-3 *Frontline*
12:00 PBS NewsHour
 3-1 *Frontline*

Wednesday 14th

5:00 3-1 *BBC World News*
 5:30 3-1 *Healthy Body Healthy Mind*
 6:00 3-1 *Christmas with the Mormon Tabernacle Choir*
 7:00 3-1 *Frontline*
 9:00 3-1 *Smart Travels – Pacific Rim*
 9:30 3-1 *Tracks Ahead*
 10:00 3-1 *Rough Cut: Woodworking*
 10:30 3-1 *Woodturning Workshop*
 11:00 3-1 *Amtrak: The First 40 Years*
 12:00 3-1 *Christmas with the Mormon Tabernacle Choir*
 1:00 3-1 *Frontline*
 3:00 3-1 *Jazzy Vegetarian*
 3:30 3-1 *America's Test Kitchen*
 4:00 3-1 *Growing a Greener World*
 4:30 3-1 *McLaughlin Group*
 5:00 3-1 *BBC World News America*
 5:30 3-1 *Nightly Business Report*
 6:00 3-1 *PBS NewsHour*
7:00 Live from Lincoln Center
 "George Balanchine's The Nutcracker"
 3-1 *Live from Lincoln Center*
9:00 Nova "Pluto Files"
 3-1 *Nova*
 3-3 *Charlie Rose*
10:00 Healthy Body Healthy Mind
 "New Hope for People with Hepatitis C"
 3-1 *Charlie Rose*
 3-3 *Alone in the Wilderness, Pt. 1*
10:30 This Old House
11:00 Charlie Rose
 3-1 *Tavis Smiley*
 3-3 *Alone in the Wilderness, Pt. 2*
11:57 Star Gazers
12:00 PBS NewsHour
 3-1 *Live from Lincoln Center*
 3-3 *Nova*

Thursday 15th

5:00 3-1 *BBC World News*
 5:30 3-1 *Closer to Truth*
 6:00 3-1 *Teaching Channel*

7:00 3-1 *Alone in the Wilderness, Pt. 1*
 8:00 3-1 *Alone in the Wilderness, Pt. 2*
 9:00 3-1 *It's Sew Easy*
 9:30 3-1 *Quilting Arts*
 10:00 3-1 *Katie Brown Workshop*
 10:30 3-1 *Knit & Crochet Today*
 11:00 3-1 *Antiques Roadshow*
 12:00 3-1 *Alone in the Wilderness, Pt. 1*
 1:00 3-1 *Alone in the Wilderness, Pt. 2*
 2:00 3-1 *Homesteading*
 3:00 3-1 *Miller Center Forums*
 4:00 3-1 *Closer to Truth*
 4:30 3-1 *European Journal*
 5:00 3-1 *BBC World News America*
 5:30 3-1 *Nightly Business Report*
 6:00 3-1 *PBS NewsHour*
7:00 Steve Jobs – One Last Thing
 3-1 *Antiques Roadshow*
8:00 Song of the Mountains
 3-1 *This Old House Hour*
9:00 Inspiration with Lance Heft
 "Tracy Lawrence (Country Music Artist)"
 3-1 *Domenici*
 3-3 *Charlie Rose*
9:30 Red Green Show "Cheap Jeep"
10:00 Woodsongs
 "Emmylou Harris, Darrell Scott, Pt. 2"
 3-1 *Charlie Rose*
 3-3 *Teaching Channel*
11:00 Charlie Rose
 3-1 *Tavis Smiley*
 3-3 *Marching Once More: 60 Years After Battle of the Bulge*
12:00 PBS NewsHour
 3-1 *This Old House Hour*
 3-3 *Forgotten War: The Struggle for North America*

Friday 16th

5:00 3-1 *BBC World News*
 5:30 3-1 *P. Allen Smith's Garden Home*
 6:00 3-1 *Song of the Mountains*
 7:00 3-1 *Jubilee*
 8:00 3-1 *This Old House Hour*
 9:00 3-1 *Globe Trekker*
 10:00 3-1 *Gary Spetz's Painting Wild Places*
 10:30 3-1 *Paint This with Jerry Yarnell*
 11:00 3-1 *Independent Lens*
 12:00 3-1 *Music Voyager*
 12:30 3-1 *Bluegrass Underground*
 1:00 3-1 *Woodsongs*
 2:00 3-1 *This Old House Hour*
 3:00 3-1 *Globe Trekker*
 4:00 3-1 *P. Allen Smith's Garden Home*
 4:30 3-1 *BBC Newsnight*
 5:00 3-1 *BBC World News America*
 5:30 3-1 *Nightly Business Report*
 6:00 3-1 *PBS NewsHour*
7:00 Market to Market
 3-1 *Washington Week*
7:30 Consuelo Mack WealthTrack
 3-1 *Need to Know*
8:00 Washington Week
 3-1 *PBS Arts from San Francisco*
8:30 Need to Know
9:00 PBS Arts from San Francisco: The Little Mermaid
 3-3 *Charlie Rose*
 10:00 3-3 *Christmas with the Mormon Tabernacle Choir*
 10:30 3-1 *Fort Niagara: The Struggle for a Continent*
 11:00 3-1 *Tavis Smiley*
 3-3 *History Detectives*

11:30 Travelscope: Christmas in Switzerland
12:00 PBS NewsHour
 3-1 *Washington Week*
 3-3 *Independent Lens*

Saturday 17th

6:00 Woodsmith Shop "Top Shop Tips"
6:30 American Woodshop
 "Dome Topped Chests"
7:00 Taste of History
 "Jamaica – The Market Basket"
7:30 Baking Made Easy "Tea Time Favorites"
8:00 Cook's Country "Family Favorites"
8:30 Pati's Mexican Table "Convent Food"
9:00 Woodturning Workshop
 "Earring Stand"
 3-1 *This Old House Hour*
9:30 Motorweek
10:00 P. Allen Smith's Garden Home
 "Hooray for Herbs"
 3-1 *Antiques Roadshow*
10:30 Victory Garden
 "Sky: Enjoy a Variety of Garden Views"
10:57 Star Gazers
11:00 Paint This with Jerry Yarnell
 "Autumn's Delight, Pt. 2"
 3-1 *Baking with Julia*
11:30 Bob Ross: The Happy Painter
 3-1 *Victory Garden*
 12:00 3-1 *This Old House*
12:30 Quilt in a Day
 "Bears-Bear's Paw Wallhanging"
 3-1 *This Old House*
1:00 Quilting Arts "Totes and Bags"
 3-1 *Ask This Old House*
1:30 Fons & Porter's Love of Quilting
 "Shadow Play"
 3-1 *Hometime*
2:00 Creative Living
 3-1 *Woodwright's Shop*
2:30 Scrapbook Soup
 3-1 *Motorweek*
3:00 Hometime "Recycled Fence"
 3-1 *Christmas with the Mormon Tabernacle Choir*
3:30 This Old House "Bedford Project, Pt. 11"
4:00 Ask This Old House
 3-1 *Live from Lincoln Center*
4:30 Welcome to My Studio
 "People, Places, and Things, Pt. 1"
5:00 Sewing with Nancy
 "Easy Reversible Aprons, Pt. 1"
5:30 Sew it All "T-Shirt Transformation"
6:00 Report from Santa Fe
 3-1 *Antiques Roadshow*
6:30 America's Heartland
7:00 Lawrence Welk Show "Songs of the 70s"
 3-1 *PBS Arts from San Francisco: The Little Mermaid*
8:00 Keeping Up Appearances
 "Hyacinth Bucket"
8:30 Are You Being Served?
 "Meet the Characters"
9:00 Austin City Limits "Esperanza Spalding/Madeleine Peyroux"
 3-3 *Lawrence Welk Show*
 9:30 3-1 *Sky Island*
9:57 Star Gazers
10:00 Nova "Pluto Files"
 3-1 *Austin City Limits*
 3-3 *Classic Gospel*
11:00 Nature "The Desert Lions"
 3-1 *Nova*
 3-3 *Jubilee*

12:00 Austin City Limits
3-1 *Christmas with the Mormon Tabernacle Choir*
3-3 *Live from the Artists Den*

Sunday 18th

6:00 Travelscope:
Christmas in Switzerland

6:30 Second Opinion "Asthma"

7:00 Antiques Roadshow "Madison, WI, Pt. 3"

8:00 Classic Gospel
"A Tribute to George Younce"

9:00 Joy of Music
"Christmas in Art and Music"

9:30 Joy of Music
"The Joy of Christmas on the Danube"

10:00 Steve Jobs – One Last Thing

11:00 Globe Trekker "South Atlantic"

12:00 Cultura
3-1 *Need to Know*

12:30 Carols Then and Now with Mormon Tabernacle Choir
3-1 *Washington Week*

1:00 PBS Arts from San Francisco: The Little Mermaid
3-1 *Religion & Ethics Newsweekly*

1:30 3-1 *To the Contrary*
2:00 3-1 *This Old House Hour*

2:57 Star Gazers
3:00 3-1 *Live from Lincoln Center*

3:30 Religion & Ethics Newsweekly

4:00 Classic Gospel
"Christmas in the Country"

5:00 Inside Washington
3-1 *L.A. Holiday Celebration 2011*

5:30 McLaughlin Group

6:00 Catholicism "Amazed and Afraid: The Revelation of God Become Man in Christ"
3-1 *Nova*

7:00 National Christmas Tree Lighting 2011
3-1 *Masterpiece Classic, Pt. 1*

8:00 Masterpiece Classic
"Downton Abbey, Pt. 1"

8:30 3-1 *Masterpiece Classic, Pt. 2*
9:00 3-3 *Smart Travels – Europe*

9:30 Masterpiece Classic
"Downton Abbey, Pt. 2"

3-3 *This American Land*

10:00 3-1 *Austin City Limits*
3-3 *Masterpiece Classic, Pt. 1*

11:00 Enola Gay's Navigator
3-1 *Masterpiece Classic, Pt. 1*

11:30 3-3 *Masterpiece Classic, Pt. 2*

11:57 Star Gazers

12:00 Nova "Pluto Files"

Monday 19th

5:00 3-1 *BBC World News*
5:30 3-1 *America's Heartland*
6:00 3-1 *Masterpiece Classic, Pt. 1*
7:30 3-1 *Masterpiece Classic, Pt. 2*
9:00 3-1 *Savor the Southwest*
9:30 3-1 *Baking Made Easy*
10:00 3-1 *Taste of History*
10:30 3-1 *Bake Decorate Celebrate!*
11:00 3-1 *Home and Hearth: The Crane Candlelight Concert*

12:00 3-1 *Masterpiece Classic, Pt. 1*
1:30 3-1 *Masterpiece Classic, Pt. 2*
3:00 3-1 *Travelscope*
3:30 3-1 *Getting Away Together*
4:00 3-1 *America's Heartland*
4:30 3-1 *Inside Washington*
5:00 3-1 *BBC World News America*

5:30 3-1 *Nightly Business Report*
6:00 3-1 *PBS NewsHour*

7:00 Antiques Roadshow "Forever Young"
3-1 *Antiques Roadshow*

8:00 Antiques Roadshow "Big & Little"
3-1 *Antiques Roadshow*

9:00 American Masters "Charles & Ray Eames: The Architect and the Painter"
3-1 *Holiday Pops/Flint Symphony*
3-3 *Charlie Rose*

10:00 3-1 *Charlie Rose*
3-3 *Antiques Roadshow*

10:27 Star Gazers

10:30 Official Best of Fest "Animation"

11:00 Antiques Roadshow
3-1 *Tavis Smiley*
3-3 *American Masters*

12:00 PBS NewsHour
3-1 *American Masters*

Tuesday 20th

5:00 3-1 *BBC World News*
5:30 3-1 *Religion & Ethics Newsweekly*
6:00 3-1 *Antiques Roadshow*
7:00 3-1 *American Masters*
8:30 3-1 *Carols Then and Now with Mormon Tabernacle Choir*

9:00 3-1 *Healthy Body Healthy Mind*
9:30 3-1 *Religion & Ethics Newsweekly*
10:00 3-1 *Closer to Truth*
10:30 3-1 *Everyday Edisons*
11:00 3-1 *Song of the Mountains*
12:00 3-1 *Antiques Roadshow*
1:00 3-1 *American Masters*
2:30 3-1 *Carols Then and Now with Mormon Tabernacle Choir*

3:00 3-1 *Music Voyager*
3:30 3-1 *Travel with Kids*
4:00 3-1 *Consuelo Mack WealthTrack*
4:30 3-1 *Scully/ The World Show*
5:00 3-1 *BBC World News America*
5:30 3-1 *Nightly Business Report*
6:00 3-1 *PBS NewsHour*

7:00 Christmas at St. Olaf: Rejoice, Give Thanks, and Sing
3-1 *Lidia Celebrates America*

8:00 Frontline "From Jesus to Christ: The First Christians," Pt. 2
3-1 *Christmas at St. Olaf*

9:00 3-1 *Frontline*
3-3 *Charlie Rose*

10:00 Catholicism "That Than Which Nothing Greater Can Be Thought"
3-3 *Secrets of the Dead*

11:00 Charlie Rose
3-1 *Tavis Smiley*
3-3 *Frontline*

12:00 PBS NewsHour
3-1 *Frontline*

Wednesday 21st

5:00 3-1 *BBC World News*
5:30 3-1 *Healthy Body Healthy Mind*
6:00 3-1 *Holiday Pops/ Flint Symphony*
7:00 3-1 *Frontline*
9:00 3-1 *Smart Travels – Pacific Rim*
9:30 3-1 *Tracks Ahead*
10:00 3-1 *Rough Cut: Woodworking*
10:30 3-1 *Woodturning Workshop*
11:00 3-1 *Super Chief: Speed, Style, Service*
12:00 3-1 *Holiday Pops with the Flint Symphony Orchestra*

1:00 3-1 *Frontline*
3:00 3-1 *Jazzy Vegetarian*
3:30 3-1 *America's Test Kitchen*

4:00 3-1 *Growing a Greener World*
4:30 3-1 *McLaughlin Group*
5:00 3-1 *BBC World News America*
5:30 3-1 *Nightly Business Report*
6:00 3-1 *PBS NewsHour*

7:00 Nature "Christmas in Yellowstone"
3-1 *Nature*

8:00 Nova "What Darwin Never Knew"
3-1 *Nova*

9:00 3-3 *Charlie Rose*

10:00 Healthy Body Healthy Mind
"Preventing Meningococcal Disease"
3-1 *Charlie Rose*
3-3 *Nature*

10:30 This Old House

11:00 Charlie Rose
3-1 *Tavis Smiley*
3-3 *Nova*

11:57 Star Gazers

12:00 PBS NewsHour
3-1 *Nature*

Thursday 22nd

5:00 3-1 *BBC World News*
5:30 3-1 *Closer to Truth*
6:00 3-1 *Teaching Channel*
7:00 3-1 *Nature*
8:00 3-1 *Lidia Celebrates America*
9:00 3-1 *It's Sew Easy*
9:30 3-1 *Quilting Arts*
10:00 3-1 *Katie Brown Workshop*
10:30 3-1 *Knit & Crochet Today*
11:00 3-1 *Antiques Roadshow*
12:00 3-1 *Nature*
1:00 3-1 *Lidia Celebrates America*
2:00 3-1 *Home and Hearth: The Crane Candlelight Concert*

3:00 3-1 *Miller Center Forums*
4:00 3-1 *Closer to Truth*
4:30 3-1 *European Journal*
5:00 3-1 *BBC World News America*
5:30 3-1 *Nightly Business Report*
6:00 3-1 *PBS NewsHour*

7:00 Christmas at Belmont
3-1 *Christmas at Belmont*

8:00 Song of the Mountains
3-1 *This Old House Hour*

9:00 Inspiration with Lance Heft
"Aaron Tippin (Country Music Artist)"
3-1 *Secrets in America: Elder Abuse*
3-3 *Charlie Rose*

9:30 Red Green Show "DNA All the Way"
3-1 *Salud Sin Barreras Health Without Barriers*

10:00 Jubilee "Tab Benoit"
3-1 *Charlie Rose*
3-3 *Teaching Channel*

11:00 Charlie Rose
3-1 *Tavis Smiley*
3-3 *Lidia Celebrates America*

12:00 PBS NewsHour
3-1 *This Old House Hour*
3-3 *Travelscope: Christmas in Switzerland*

Friday 23rd

5:00 3-1 *BBC World News*
5:30 3-1 *P. Allen Smith's Garden Home*
6:00 3-1 *Song of the Mountains*
7:00 3-1 *Jubilee*
8:00 3-1 *This Old House Hour*
9:00 3-1 *Globe Trekker*
10:00 3-1 *Gary Spetz's Painting Wild Places*
10:30 3-1 *Paint This with Jerry Yarnell*

11:00 3-1 *Travelscope: Christmas in Switzerland*
 11:30 3-1 *European Christmas Markets*
 12:00 3-1 *Music Voyager*
 12:30 3-1 *Bluegrass Underground*
 1:00 3-1 *Woodsongs*
 2:00 3-1 *This Old House Hour*
 3:00 3-1 *Globe Trekker*
 4:00 3-1 *P. Allen Smith's Garden Home*
 4:30 3-1 *BBC Newsnight*
 5:00 3-1 *BBC World News America*
 5:30 3-1 *Nightly Business Report*
 6:00 3-1 *PBS NewsHour*
 7:00 **Market to Market**
 3-1 *Washington Week*
 7:30 **Consuelo Mack WealthTrack**
 3-1 *Need to Know*
 8:00 **Washington Week**
 3-1 *Christmas with the Mormon Tabernacle Choir*
 8:30 **Need to Know**
 9:00 **Broadside**
 "Emerging Empires Collide, Pt. 1"
 3-1 *Christmas at St. Olaf: Rejoice, Give Thanks, and Sing*
 3-3 *Charlie Rose*
 10:00 **Masterpiece Contemporary**
 "Collision, Pt. 1"
 3-1 *Charlie Rose*
 3-3 *Holiday Pops/Flint Symphony*
 11:00 3-1 *Tavis Smiley*
 3-3 *History Detectives*
 12:00 **PBS NewsHour**
 3-1 *Washington Week*
 3-3 *Independent Lens*

Saturday 24th

6:00 **Rough Cut: Woodworking** "Greene and Greene-Inspired Dressing Mirror"
 6:30 **American Woodshop**
 "Shaker Style Turned Stools"
 7:00 **Taste of History** "Birds of America"
 7:30 **Baking Made Easy** "Two-Toned Baking"
 8:00 **Cook's Country** "Not Just for Kids"
 8:30 **Pati's Mexican Table** "Hibiscus Flower"
 9:00 **Woodturning Workshop** "Rolling Pin"
 3-1 *This Old House Hour*
 9:30 **Motorweek**
 10:00 **P. Allen Smith's Garden Home**
 "Wonderful Wildflowers"
 3-1 *Antiques Roadshow*
 10:30 **Victory Garden**
 "Create a Garden That's Cool"
 10:57 **Star Gazers**
 11:00 **Paint This with Jerry Yarnell**
 "Autumn's Delight, Pt. 3"
 3-1 *Baking with Julia*
 11:30 **Joy of Painting**
 3-1 *Victory Garden*
 12:00 **Beauty of Oil Painting** "Forest Falls"
 3-1 *This Old House*
 12:30 **Quilt in a Day** "Baskets of Cheer"
 3-1 *This Old House*
 1:00 **Quilting Arts** "The Quilted Home"
 3-1 *Ask This Old House*
 1:30 **Fons & Porter's Love of Quilting**
 "Travel 'n Style"
 3-1 *Hometime*
 2:00 **Creative Living**
 3-1 *Woodwright's Shop*
 2:30 **Scrapbook Soup**
 3-1 *Motorweek*
 3:00 **Hometime** "Granite Bar Top"
 3-1 *American Masters*

3:30 **This Old House** "Bedford Project, Pt. 12"
 4:00 **Ask This Old House**
 4:30 **Welcome to My Studio**
 "People, Places, and Things, Pt. 2"
 3-1 *Antiques Roadshow*
 5:00 **Sewing with Nancy**
 "Easy Reversible Aprons, Pt. 2"
 5:30 **Sew it All** "Denim Do-Over"
 3-1 *Christmas at St. Olaf: Rejoice, Give Thanks, and Sing*
 6:00 **Report from Santa Fe**
 6:30 **America's Heartland**
 3-1 *Christmas at Belmont*
 7:00 **Lawrence Welk Show** "Christmas"
 7:30 3-1 *Nature*
 8:00 **Keeping Up Appearances**
 "Christmas Special"
 8:30 **Are You Being Served?**
 "Dear Sexy Knickers"
 3-1 *Christmas with the Mormon Tabernacle Choir*
 9:00 **Austin City Limits** "Tom Waits"
 3-3 *Lawrence Welk Show*
 9:30 3-1 *Sky Island*
 9:57 **Star Gazers**
 10:00 **Nova** "What Darwin Never Knew"
 3-1 *Austin City Limits*
 3-3 *Classic Gospel*
 11:00 3-1 *Nature*
 3-3 *Jubilee*
 12:00 **Austin City Limits**
 3-1 *Nova*
 3-3 *Live from the Artists Den*

Sunday 25th

6:00 **Travelscope** "Gathering in Scotland"
 6:30 **Second Opinion** "Psoriasis"
 7:00 **Antiques Roadshow** "Forever Young"
 8:00 **Classic Gospel**
 "Christmas in the Country"
 9:00 **Joy of Music** "Christkindle Christmas I"
 9:30 **Joy of Music** "Musical Journey of the Baltic Sea II"
 10:00 **Christmas with the Mormon Tabernacle Choir**
 11:00 **Globe Trekker** "The Netherlands"
 12:00 **Cultura**
 3-1 *Washington Week*
 12:30 **America's Heartland**
 3-1 *Need to Know*
 1:00 **Need to Know**
 3-1 *Religion & Ethics Newsweekly*
 1:30 **Life Focus** "Living by the Book"
 3-1 *To the Contrary*
 2:00 **Closer to Truth** "Is Life and Mind Inevitable in the Universe?"
 3-1 *This Old House Hour*
 2:30 **Texas Parks & Recreation**
 2:57 **Star Gazers**
 3:00 **Healthy Body Healthy Mind**
 "Getting Gout Under Control"
 3-1 *Lidia Celebrates America*
 3:30 **Religion & Ethics Newsweekly**
 4:00 **Classic Gospel** "A Gospel Journey – Oak Ridge Boys"
 3-1 *Christmas at St. Olaf: Rejoice, Give Thanks, and Sing*
 5:00 **Inside Washington**
 3-1 *Nova*
 5:30 **McLaughlin Group**
 6:00 **Catholicism** "That Than Which Nothing Greater Can Be Thought"
 7:00 **Nature** "Christmas in Yellowstone"
 3-1 *Nature*

8:00 **Masterpiece Classic**
 "Downton Abbey, Pt. 3"
 3-1 *Masterpiece Classic*
 9:00 3-3 *Smart Travels – Europe*
 9:30 **Jerusalem: Center of the World**
 3-1 *American Stamps*
 3-3 *This American Land*
 10:00 3-1 *Austin City Limits*
 3-3 *Forever Wild*
 11:00 3-1 *Nature*
 3-3 *Masterpiece Classic*
 11:30 **Official Best of Fest** "Animation"
 11:57 **Star Gazers**
 12:00 **Nova** "What Darwin Never Knew"
 3-1 *Masterpiece Classic*

Monday 26th

5:00 3-1 *BBC World News*
 5:30 3-1 *America's Heartland*
 6:00 3-1 *Julia Robinson and Hilbert's Tenth Problem*
 7:00 3-1 *Masterpiece Classic, Pt. 3*
 8:30 3-1 *Starting Anew with Mormon Tabernacle Choir*
 9:00 3-1 *Savor the Southwest*
 9:30 3-1 *Baking Made Easy*
 10:00 3-1 *Taste of History*
 10:30 3-1 *Bake Decorate Celebrate!*
 11:00 3-1 *Great Museums*
 12:00 3-1 *Julia Robinson and Hilbert's Tenth Problem*
 1:00 3-1 *Masterpiece Classic, Pt. 3*
 2:30 3-1 *Starting Anew with Mormon Tabernacle Choir*
 3:00 3-1 *Travelscope*
 3:30 3-1 *Getting Away Together*
 4:00 3-1 *America's Heartland*
 4:30 3-1 *Inside Washington*
 5:00 3-1 *BBC World News America*
 5:30 3-1 *Nightly Business Report*
 6:00 3-1 *PBS NewsHour*
 7:00 **Antiques Roadshow** "Phoenix, AZ, Pt. 1"
 3-1 *Antiques Roadshow*
 8:00 **Antiques Roadshow** "San Jose, CA, Pt. 1"
 3-1 *Antiques Roadshow*
 9:00 **Steve Jobs – One Last Thing**
 3-1 *Muhammad Ali: Made in Miami*
 3-3 *Charlie Rose*
 10:00 **Tracks Ahead** "Harz Mountain Railway"
 3-1 *Charlie Rose*
 3-3 *Antiques Roadshow*
 10:27 **Star Gazers**
 10:30 **Official Best of Fest**
 "Fathers and Daughters"
 11:00 **Antiques Roadshow**
 3-1 *Tavis Smiley*
 3-3 *Jerusalem: Center of the World*
 12:00 **PBS NewsHour**
 3-1 *Muhammad Ali: Made in Miami*

Tuesday 27th

5:00 3-1 *BBC World News*
 5:30 3-1 *Religion & Ethics Newsweekly*
 6:00 3-1 *Antiques Roadshow*
 7:00 3-1 *Jerusalem: Center of the World*
 9:00 3-1 *Healthy Body Healthy Mind*
 9:30 3-1 *Religion & Ethics Newsweekly*
 10:00 3-1 *Closer to Truth*
 10:30 3-1 *Everyday Edisons*
 11:00 3-1 *Song of the Mountains*
 12:00 3-1 *Antiques Roadshow*
 1:00 3-1 *Jerusalem: Center of the World*
 3:00 3-1 *Music Voyager*
 3:30 3-1 *Travel with Kids*

- 4:00 3-1 *Consuelo Mack WealthTrack*
- 4:30 3-1 *Scully/ The World Show*
- 5:00 3-1 *BBC World News America*
- 5:30 3-1 *Nightly Business Report*
- 6:00 3-1 *PBS NewsHour*
- 7:00 **Botany of Desire**
3-1 *Botany of Desire*
- 9:00 **Death of the Old West**
3-1 *Frontline "The Undertaking"*
3-3 *Charlie Rose*
- 9:30 **Creative Living**
- 10:00 **Catholicism** "Our Tainted Nature's Solitary Boast: Mary"
3-1 *Charlie Rose*
3-3 *Secrets of the Dead*
- 11:00 **Charlie Rose**
3-1 *Tavis Smiley*
3-3 *Frontline*
- 12:00 **PBS NewsHour**
3-1 *Frontline*
3-3 *Paths of the Displaced*

Wednesday 28th

- 5:00 3-1 *BBC World News*
- 5:30 3-1 *Healthy Body Healthy Mind*
- 6:00 3-1 *Hammer on Steel: The Concert*
- 7:00 3-1 *Frontline*
- 8:00 3-1 *Paths of the Displaced*
- 9:00 3-1 *Smart Travels – Pacific Rim*
- 9:30 3-1 *Tracks Ahead*
- 10:00 3-1 *Rough Cut: Woodworking*
- 10:30 3-1 *Woodturning Workshop*
- 11:00 3-1 *Program About Unusual Buildings*
- 12:00 3-1 *Hammer on Steel: The Concert*
- 1:00 3-1 *Frontline*
- 2:00 3-1 *Paths of the Displaced*
- 3:00 3-1 *Jazzy Vegetarian*
- 3:30 3-1 *America's Test Kitchen*
- 4:00 3-1 *Growing a Greener World*
- 4:30 3-1 *McLaughlin Group*
- 5:00 3-1 *BBC World News America*
- 5:30 3-1 *Nightly Business Report*
- 6:00 3-1 *PBS NewsHour*
- 7:00 **Nature** "Arctic Bears"
3-1 *Nature*
- 8:00 **Nova** "Extreme Ice"
3-1 *Nova*
- 9:00 **Nova** "Secrets Beneath the Ice"
3-1 *Nova*
3-3 *Charlie Rose*
- 10:00 **Healthy Body Healthy Mind**
"Saving Lives: Stopping Anaphylaxis"
3-1 *Charlie Rose*
3-3 *Nature*
- 10:30 **This Old House**
- 11:00 **Charlie Rose**
3-1 *Tavis Smiley*
3-3 *Nova*
- 11:57 **Star Gazers**
- 12:00 **PBS NewsHour**
3-1 *Nature*
3-3 *Nova*

Thursday 29th

- 5:00 3-1 *BBC World News*
- 5:30 3-1 *Closer to Truth*
- 6:00 3-1 *Teaching Channel*
- 7:00 3-1 *Nature*
- 8:00 3-1 *Doing Virtuous Business*
- 9:00 3-1 *It's Sew Easy*
- 9:30 3-1 *Quilting Arts*
- 10:00 3-1 *Katie Brown Workshop*
- 10:30 3-1 *Knit & Crochet Today*
- 11:00 3-1 *Antiques Roadshow*

- 12:00 3-1 *Nature*
- 1:00 3-1 *Doing Virtuous Business*
- 2:00 3-1 *Do No Harm*
- 3:00 3-1 *Miller Center Forums*
- 4:00 3-1 *Closer to Truth*
- 4:30 3-1 *European Journal*
- 5:00 3-1 *BBC World News America*
- 5:30 3-1 *Nightly Business Report*
- 6:00 3-1 *PBS NewsHour*
- 7:00 **Frontline** "The Undertaking"
3-1 *Antiques Roadshow*
- 8:00 **Song of the Mountains**
3-1 *This Old House Hour*
- 9:00 **Inspiration with Lance Heft**
"Regie Hamm (Singer/Songwriter)"
3-1 *Creative Living*
3-3 *Charlie Rose*
- 9:30 **Red Green Show**
"Who Wants to be a Smart Guy?"
3-1 *Secrets in America: Elder Abuse*
- 10:00 **Jubilee** "Shemekia Copeland"
3-1 *Charlie Rose*
3-3 *Teaching Channel*
- 11:00 **Charlie Rose**
3-1 *Tavis Smiley*
3-3 *Doing Virtuous Business*
- 12:00 **PBS NewsHour**
3-1 *This Old House Hour*
3-3 *Do No Harm*

Friday 30th

- 5:00 3-1 *BBC World News*
- 5:30 3-1 *P. Allen Smith's Garden Home*
- 6:00 3-1 *Song of the Mountains*
- 7:00 3-1 *Jubilee*
- 8:00 3-1 *This Old House Hour*
- 9:00 3-1 *Globe Trekker*
- 10:00 3-1 *Gary Spetz's Painting Wild Places*
- 10:30 3-1 *Paint This with Jerry Yarnell*
- 11:00 3-1 *Independent Lens*
- 12:00 3-1 *Music Voyager*
- 12:30 3-1 *Bluegrass Underground*
- 1:00 3-1 *Woodsongs*
- 2:00 3-1 *This Old House Hour*
- 3:00 3-1 *Globe Trekker*
- 4:00 3-1 *P. Allen Smith's Garden Home*
- 4:30 3-1 *BBC Newsnight*
- 5:00 3-1 *BBC World News America*
- 5:30 3-1 *Nightly Business Report*
- 6:00 3-1 *PBS NewsHour*
- 7:00 **Market to Market**
3-1 *Washington Week*
- 7:30 **Consuelo Mack WealthTrack**
3-1 *Need to Know*
- 8:00 **Washington Week**
3-1 *American Masters*
- 8:30 **Need to Know**
- 9:00 **Broadside**
"Emerging Empires Collide, Pt. 2"
3-3 *Charlie Rose*
- 9:30 3-1 *American Stamps*
- 10:00 **Masterpiece Contemporary**
"Collision, Pt. 2"
3-1 *Charlie Rose*
3-3 *Hammer on Steel: The Concert*
- 11:00 3-1 *Tavis Smiley*
3-3 *History Detectives*
- 11:30 **Death of the Old West**
- 12:00 **PBS NewsHour**
3-1 *Washington Week*
3-3 *Independent Lens*

- 6:00 **Rough Cut: Woodworking**
"Arts & Crafts-Style Chair"
- 6:30 **American Woodshop**
"Antique Repair & Restoration"
- 7:00 **Taste of History**
"Nothing Grows on Exuma"
- 7:30 **Baking Made Easy** "Bread for Life"
- 8:00 **Cook's Country** "Fried Chicken/Biscuits"
- 8:30 **Pati's Mexican Table** "Mexican Picnic"
- 9:00 **Woodturning Workshop** "Shop Stool"
3-1 *This Old House Hour*
- 9:30 **Motorweek**
- 10:00 **P. Allen Smith's Garden Hom** "Shrubs"
3-1 *Antiques Roadshow*
- 10:30 **Victory Garden** "Vertical: Think Up!"
- 10:57 **Star Gazers**
- 11:00 **Paint This with Jerry Yarnell**
"Autumn's Delight, Pt. 4"
3-1 *Baking with Julia*
- 11:30 **Joy of Painting**
3-1 *Victory Garden*
- 12:00 **Beauty of Oil Painting**
"Tropical Paradise"
3-1 *This Old House*
- 12:30 **Quilt in a Day**
"Mortimer Moose Wallhanging"
3-1 *This Old House*
- 1:00 **Quilting Arts** "DIY Fabrics for Quilting"
3-1 *Ask This Old House*
- 1:30 **Fons & Porter's Love of Quilting**
"Daisy Doodle"
3-1 *Hometime*
- 2:00 **Creative Living**
3-1 *Woodwright's Shop*
- 2:30 **Scrapbook Soup**
3-1 *Motorweek*
- 3:00 **Hometime** "Porch and Rail"
3-1 *American Masters*
- 3:30 **This Old House** "Bedford Project, Pt. 13"
- 4:00 **Ask This Old House**
- 4:30 **Welcome to My Studio**
"People, Places, and Things, Pt. 3"
- 4:30 3-1 *American Stamps*
- 5:00 **Sewing with Nancy**
"30-Minute Doll Clothes, Pt. 1"
3-1 *Nature*
- 5:30 **Sew it All** "Knockout Knockoffs"
- 6:00 **Report from Santa Fe**
3-1 *Antiques Roadshow*
- 6:30 **America's Heartland**
- 7:00 **Lawrence Welk Show** "New Year's"
3-1 *Live from Lincoln Center*
- 8:00 **Keeping Up Appearances**
"The New Vicar Invited for Tea"
- 8:30 **Are You Being Served?**
"Our Figures Are Slipping"
- 9:00 **Coldplay New Year's Eve: An Austin City Limits Special**
3-1 *Great Performances "Hugh Laurie"*
3-3 *Lawrence Welk Show*
- 10:00 3-1 *Coldplay New Year's Eve: An Austin City Limits Special*
3-3 *Classic Gospel*
- 10:30 **Great Performances**
"Hugh Laurie: Let Them Talk"
- 11:00 3-3 *Jubilee*
- 11:30 **Coldplay New Year's Eve: An Austin City Limits Special**
3-1 *Live from Lincoln Center*
"Bernstein and Gershwin"
- 11:57 **Star Gazers**
- 12:00 3-3 *Live from the Artists Den*

◆ KENW/KMTH-FM LOG ◆

Portales, NM, 89.5 MHz — Maljamar, NM, 98.7 MHz — Tucumcari, NM, 88.9 MHz — DesMoines, NM, 88.5 MHz

Translators: Apache Springs, 90.9 MHz; Clayton, 93.5 MHz; Conchas Dam, 88.3; DesMoines, 106.1 MHz; Ft. Sumner, 91.7 MHz; Las Vegas, 107.1 MHz; Midland, TX - 99.5MHz; Montoya, 90.7 MHz; Raton, 104.7 MHz; Roswell, 91.1 MHz; Roy, 104.9 MHz; Ruidoso, 89.3 MHz; Wagon Mound, 92.1 MHz;

Sundays

8:00 a.m. WITH HEART AND VOICE

- Dec 4 Advent 2
John the Baptist's cry in the wilderness, "Prepare ye the way of the Lord" rings out as we hear music of preparation and anticipation.
- Dec 11 Advent 3
Advent choral and organ music includes the great prophecies proclaiming justice and mercy.
- Dec 18 Advent 4
The Angel Gabriel's visit to Mary is the focus for the Fourth Sunday of Advent, and includes music old and new centering on the visitation and Mary's response.
- Dec 25 KENW/KMTH-FM presents continuous holiday music from 7:00 p.m. on the 24th until 11:00 p.m. on the 25th.

9:00 a.m. FOOTLIGHT PARADE

- Dec 4 It Takes Two
- Dec 11 Pick Yourself Up!
- Dec 18 Good Conversations
- Dec 25 KENW/KMTH-FM presents continuous holiday music from 7:00 pm on the 24th until 11:00 pm on the 25th.

10:00 a.m. RADIO LAB

- Hosts Jad Abumrad and Robert Krulwich take a big idea, and chase that idea, going wherever whim takes them. Along the way, they argue, imagine, and discover the hidden connections that make this idea so surprisingly powerful. And the sounds you hear are as new and startling as the ideas they explore. It's Technicolor radio.
- Dec 4 Desperately Seeking Symmetry
- Dec 11 Oops
- Dec 18 Words
- Dec 25 KENW/KMTH-FM presents continuous holiday music from 7:00 pm on the 24th until 11:00 pm on the 25th.

11:00 a.m. FRESH AIR WEEKEND WITH TERRY GROSS

This multi-award-winning interview and features program opens the window on contemporary arts and issues with guests from worlds as diverse as literature and economics.

12:00 p.m. PEOPLE'S PHARMACY

Joe and Terry Graedon explore different medical topics and issues in depth with medical experts.

1:00 p.m. **DEMOCRACY NOW!** is a national, independent, award-winning news program hosted by Amy Goodman and Juan Gonzalez. It provides access to people and perspectives rarely heard in other media, including independent and international journalists, ordinary people from around the world, grassroots leaders, artists, academics, and independent analysts.

2:00 p.m. FOOTLIGHT PARADE

- Dec 4 It Takes Two
- Dec 11 Pick Yourself Up!
- Dec 18 Good Conversations
- Dec 25 KENW/KMTH-FM presents continuous holiday music from 7:00 pm on the 24th until 11:00 pm on the 25th.

3:00 p.m. **MOUNTAIN STAGE** is a weekly two-hour program hosted by singer/songwriter Larry Groce. The program presents an array of live contemporary music seasoned with traditional roots performers. It showcases well-known artists and delights in discovering performers who are not so well known.

- Dec 4 Brett Dennen; The Kruger Brothers; Red Clay Ramblers; Charlie Worsham; Nikki Lane
- Dec 11 Dawes; James McMurtry; Blitzen Trapper; Jason Isbell & The 400 Unit; Matthew Sweet
- Dec 18 The Nighthawks; Chandler Travis Three-O; Milk Carton Kids; Sarah Siskind; Lucy Wainwright Roche
- Dec 25 KENW/KMTH-FM presents continuous holiday music from 7:00 pm on the 24th until 11:00 pm on the 25th.

5:00 p.m. CELTIC CONNECTIONS

- Dec 4 New Releases
- Dec 11 Old Favorites
- Dec 18 Celtic Kids
- Dec 25 KENW/KMTH-FM presents continuous holiday music from 7:00 pm on the 24th until 11:00 pm on the 25th.

6:00 p.m. ALL THINGS CONSIDERED

7:00 p.m. DEUTSCHE WELLE FESTIVAL CONCERTS

- Dec 4 Beethovenfest in Bonn #1
BEETHOVEN: Symphony No. 1 in C, Op. 21; Symphony No. 9 in d, Op. 125

- Dec 11 Rolandseck Festival
BOCCHERINI: Sextet in E-Flat, Op. 42, for Strings and Winds
DVORAK: Slavonic Dances, Op. 46 and Op. 72
SHOSTAKOVICH: Piano Quintet in g, Op. 57
LACHNER: *Nonette* in F for Strings and Winds
LANSKY: *Hop* for Marimba and Violin
- Dec 18 Beethovenfest in Bonn 02
LISZT: Mephisto Waltz No. 1; Piano Concerto No. 1 in E-Flat; Hungarian Rhapsody No. 2
KODALY: Dances of Galanta
SAINT-SAENS: Introduction and Rondo Capriccioso for Violin and Orchestra, Op. 28
BOTTESINI: Grand Duo Concertante for Double Bass, Violin, and Orchestra
- Dec 25 KENW/KMTH-FM presents continuous holiday music from 7:00 pm on the 24th until 11:00 pm on the 25th.

9:00 p.m. THE ROMANTIC HOURS

- Mona Golabek, the acclaimed "Voice of Romance," guides you on a journey through the passion of the greatest composers, authors, poets, and thinkers of all time.
- Dec 4 Mona's guest is actor Theodore Bikel.
- Dec 11 Selections from the diaries of Goethe
- Dec 18 Love letters of Beethoven
- Dec 25 KENW/KMTH-FM presents continuous holiday music from 7:00 pm on the 24th until 11:00 pm on the 25th.

10:00 p.m. WEEKEND PERFORMANCE TODAY

11:00 p.m. **MUSIC OUT OF THE NIGHT AND INTO THE MORNING** until 5:00 a.m. when **Morning Edition** begins.

Mondays

7:00 p.m. CHICAGO SYMPHONY ORCHESTRA

- Hosted and produced by Don Tait, the Chicago Symphony Orchestra recordings have earned many prestigious international awards, including Best Classical Performances in the choral, orchestral, instrumental, and vocal soloist categories.
- Dec 5 HAYDN: Sinfonia Concertante
SCHUBERT: Symphony No. 5 in B-Flat, D. 485
MAHLER: Symphony No. 4 in G



Dec 12 PROKOFIEV: Suite from *The Love for Three Oranges*; Violin Concerto No. 2 in g, Op. 63

Dec 19 VERDI: Overture to *Giovanna d'Arco*
 ROTA: Suite from *The Leopard*
 IBERT: Flute Concerto
 TCHAIKOVSKY: Symphony No. 5 in e, Op. 64

Dec 26 HANDEL: Organ Concerto No. 1 in g; Organ Concerto No. 4 in F; *Water Music* (complete)
 MOZART: Symphony No. 39 in E-Flat, K. 543

9:00 p.m. PERFORMANCE TODAY
11:00 p.m. MUSIC OUT OF THE NIGHT AND INTO THE MORNING until 5:00 a.m. when **Morning Edition** begins.

Tuesdays

7:00 p.m. NEW YORK PHILHARMONIC

Dec 6 R. STRAUSS: *Don Quixote*
 BEETHOVEN: Symphony No. 6, "Pastoral"

Dec 13 HAYDN: Symphony No. 96, "Miracle"
 BRUCKNER: Symphony No. 7

Dec 20 J.S. BACH: Concerto for Violin and Oboe
 MOZART: Symphony No. 33
 BEETHOVEN: Piano Concerto No. 1

Dec 27 HANDEL: Messiah

9:00 p.m. PERFORMANCE TODAY
11:00 p.m. MUSIC OUT OF THE NIGHT AND INTO THE MORNING until 5:00 a.m. when **Morning Edition** begins.

Wednesdays

7:00 p.m. LIVE! AT THE CONCERT-GEBOUW

Dec 7 Rotterdam Philharmonic Orchestra
 BARTOK: Dance Suite
 SAARIAHO: *Quatre instants*
 SIBELIUS: *Luonnotar*; Symphony No. 4

Dec 14 Royal Concertgebouw Orchestra
 MOZART: Symphony No. 36, KV 425, "Linz"; Aria, Un moto di gioia, KV 579; Excerpts from *Zaide*, KV 344 and KV 369

Dec 21 Netherlands Radio Chamber Philharmonic
 MACMILLAN: *Tryst*
 OLIVERO: *Neharo't neharo't*
 BARTOK: Music for Strings, Percussion, and Celesta

Dec 28 Royal Concertgebouw Orchestra
 MAHLER: Symphony No. 9

9:00 p.m. PERFORMANCE TODAY
11:00 p.m. MUSIC OUT OF THE NIGHT AND INTO THE MORNING until 5:00 a.m. when **Morning Edition** begins.

Thursdays

7:00 p.m. COLLECTORS' CORNER with HENRY FOGEL

Dec 1 Music by Geirr Tveitt
 TVEITT: Piano Concerto No. 4; Variations on a Hardanger Folksong; Turtle for Mezzo-soprano and Orchestra

Dec 8 A Russian Carmen
 BIZET: *Carmen*

Dec 15 Music by Robert Sierra, Program 1
 SIERRA: Preamble; Symphony No. 3, "La Salsa"; Symphony No. 1; and more

FM Radio Week-at-a-Glance

	Sunday	Monday	Tuesday	Wednesday	Thursday	Friday	Saturday	Monday through Friday				
5:00							5:00 a.m. People's Pharmacy	Regional Newscasts at: 5:33, 6:33, 7:33, & 10:06 a.m. 12:06, 2:06, & 5:33 p.m. 8:00 Marketplace Report 8:08 Snow Country Ski Report 8:20 Nature Notes (TuTh) 8:30 Health in a Heartbeat 8:45 A Sign of Science 9:00 Weather/News 9:05 Dateline New Mexico 9:15 Marketplace Tech Report 9:30 Health Matters 9:45 New Mexico Matters 10:00 News/Statewide News 10:15 Engines of Our Ingenuity 10:30 N.M. Mile Markers/ Disability Awareness 10:45 Writer's Almanac 11:00 Weather/News 11:15 Food for Thought 11:30 Pulse of the Planet 11:45 Isla Earth 12:00 News/Statewide New 12:15 Community Calendar/ Composer's Datebook 12:30 Moment in Time 12:33 Snow Country Ski Report 12:45 Arts and Science 1:00 Weather/News 1:15 Family Health 1:30 Earth & Sky/ Loh Down on Science 1:45 A Moment of Science 2:00 News/Statewide News 2:15 Naturewatch/Bird Note 2:30 America's Storyteller 2:45 90 Second Naturalist/ Environminute 3:00 Weather/News 3:06 MarketPlace Index 3:15 The Plant Detective 3:25 Dateline New Mexico 3:29 Snow Country Ski Report 6:57 Weather 6:58 N.M. Mile Markers 9:00 Weather/News 12:00 a.m. Weather/News 3:00 a.m. Weather/News				
6:00	Weekend Edition	Morning Edition	Morning Edition	Morning Edition	Morning Edition	Morning Edition	6:00 a.m. Weekend Edition					
7:00												
8:00	With Heart and Voice	Music	Music	Music	Music	Music	8:00 a.m. Car Talk					
9:00	Footlight Parade						9:00 a.m. Wait, Wait... Don't Tell Me					
10:00	Radiolab						10:00 a.m. Bioneers					
11:00	Fresh Air Weekend with Terry Gross						10:30 a.m. New Letters					
12:00	People's Pharmacy (R)						11:00 a.m. American Opera Companies					
1:00	Democracy Now!											
2:00	Footlight Parade											
3:00	Mountain Stage						3:00 p.m. Classical Guitar					
3:30							Parents Journal		Best/Knowledge	51 Percent	Health Show	Says You!
4:00							Marketplace		Marketplace	Marketplace	Marketplace	Marketplace
4:30							Prairie Home Companion					
5:00	Celtic Connections	All Things Considered	All Things Considered	All Things Considered	All Things Considered	All Things Considered						
6:00	All Things Considered	PBS NewsHour	PBS NewsHour	PBS NewsHour	PBS NewsHour	PBS NewsHour	All Things Considered					
7:00	Deutsch Welle Festival Concerts	Chicago Symphony Orchestra	New York Philharmonic	Live at the Concertgebouw	Collectors' Corner	Compact Discoveries	Marian McPartland					
8:00						Song of America	Swingin' Down the Lane					
9:00	The Romantic Hours	Performance Today	Performance Today	Performance Today	Performance Today	Performance Today	Jazz at Lincoln Center Wynton Marsalis					
10:00	Performance Today						Jazzset with D.D. Bridgewater					
11:00	Classical Music Out of the Night until 5:00 a.m.	Classical Music Out of the Night until 5:00 a.m.	Classical Music Out of the Night until 5:00 a.m.	Classical Music Out of the Night until 5:00 a.m.	Classical Music Out of the Night until 5:00 a.m.	Classical Music Out of the Night until 5:00 a.m. when People's Pharmacy begins.	Classical Music Out of the Night until 6:00 a.m.					

- Dec 22 Music by Robert Sierra, Program 2
SIERRA: A Joyous Overture;
Missa Latina, Pro Pace
- Dec 29 Pavel Lisitsian – The Great
Armenian Baritone
- 9:00 p.m. PERFORMANCE TODAY**
11:00 p.m. MUSIC OUT OF THE NIGHT AND INTO THE MORNING until 5:00 a.m. when **Morning Edition** begins.

Fraturdays

7:00 p.m. COMPACT DISCOVERIES

- Dec 2 Winter
Dec 9 A Russian Winter
Dec 16 A Symphony for Santa Claus
Dec 23 A Leroy Anderson Christmas
Dec 30 The End

8:00 p.m. SONG OF AMERICA

- Dec 2 There is No Gender in Music
This program looks at the lives and songs of generations of American women composers.
- Dec 9 Emily Dickinson: Letter to the World
Hundreds of compelling settings of her poems exist, by composers from Ernst Bacon to Andrew Previn.

- Dec 16 Songs We've Always Sung
Aaron Copland's "Old American Songs" have become recital standards, but traditional texts and tunes have attracted many other classical composers, including John Jacob Niles, George Crumb, and Jake Heggie.

- Dec 23 Langston Hughes and the Harlem Renaissance
His poetry gave jubilant voice to the lives of African-Americans and has inspired settings by dozens of composers.

- Dec 30 Places that Sing to Us
There are places in the American landscape that are part of our collective consciousness, thanks to music, and include songs that have helped shape the way we see our country.

- 9:00 p.m. PERFORMANCE TODAY**
11:00 p.m. MUSIC OUT OF THE NIGHT AND INTO THE MORNING until 5:00 a.m. when **People's Pharmacy** begins.

Saturdays

8:00 a.m. CAR TALK

9:00 a.m. WAIT WAIT DON'T TELL ME WITH PETER SEGAL AND CARL KASELL

10:00 a.m. THE BIONEERS: Revolution from the Heart of Nature

highlights cutting-edge solutions to major environmental challenges and crises.


10:30 a.m. NEW LETTERS ON THE AIR

This program focuses on writers of poetry, fiction, and creative non-fiction, with interviews interspersed with readings by the writer, or a public poetry reading.

- Dec 3 Fiction writer, Christie Hodgen
Dec 10 A dramatic reading of Dylan Thomas' "A Child's Christmas in Wales"
Dec 17 Grace Paley reading her famous holiday story, "The Loudest Voice"
Dec 24 Poet Robert Bly performing with sitar player, David Whetstone
Dec 31 Poet Michelle Boisseau

BUSINESS FRIENDS

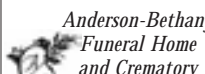
Many of the outstanding programs on KENW-TV and KENW/KMTH-FM are underwritten by the following businesses, organizations, and individuals. Each Business Friend appears with the name of the program(s) they have chosen to underwrite. We gratefully acknowledge their support and encourage you to let them know you notice and appreciate their generosity.



Artesia, NM
Nightly Business Report, Nova



Clovis Community College
Cultural Art Series
Primetime Programming, TV



Anderson-Bethany
Funeral Home
and Crematory
Roswell, NM
Classic Gospel



Clovis Depot
Model Train Museum
Clovis, NM
*Tracks Ahead
Weekend Edition
FM Programming*



PLATEAU
Wireless
"A CLOSER CONNECTION"
Evening News/Public Affairs
Programming
News 3 New Mexico



Featherstone
Development
Corporation
Roswell, NM
*Morning Edition, FM
Jazz Programming, FM*

New Mexico Humanities Council
Albuquerque, NM
(505) 277-3217
www.nmhum.org
*Morning Edition, FM
Weekend Edition, FM*

Lindsey Law Firm
Daniel R. Lindsey
John L. Collins, Jr.
Clovis, NM
Nova



MANAGED
WASTE
Clovis, Portales, Hobbs,
Lovington, NM
Weekend Programming, FM



A Touchstone Energy Cooperative
Farmers' Electric Cooperative, Inc. of New Mexico
Clovis, NM
Ask This Old House



Ruidoso, NM
*Morning Edition, FM
Weekend Edition, FM*

Roswell Jazz Festival
Roswell, NM
*Piano Jazz, FM
Jazz at Lincoln Center*



The Citizens Bank
Clovis, Fort Sumner, Texico, NM
Market to Market



Dairy
Creative Living,
Maya & Miguel, Sesame Street



Phil Brewer
Roswell, NM
Car Talk, FM



NM STATE
UNIVERSITY
CARLSBAD
Carlsbad, NM
*Morning Edition, FM
Weekend Edition, FM*

Tome on the Range
Las Vegas, NM
*Fresh Air Weekend
Weekend Edition, FM
Writer's Almanac, FM*



Permian Ford-Lincoln-Mercury, Inc.
Hobbs, NM
*Weekend ATC, FM
All Things Considered, FM
Car Talk, FM*



Taylor Water Well Service
Carlsbad, NM
A Prairie Home Companion, FM



Refining Company
Artesia, NM
Music & News, FM



Tower Barbershop
Midland, TX
*Nature Notes, FM
Food for Thought, FM
Naturewatch/Bird Note, FM*



CJ's
Pharmacy... At your Service
Portales, NM
*Antiques Roadshow,
Healthy Body, Healthy Mind,
McLaughlin Group,
Sportslook*



Merrill-Lynch
Roswell, NM
Consuelo Mack WealthTrack

This space could be yours!
For Underwriting opportunities,
please call toll-free
(888) 367-5369. Ask for
Rena for TV, Carla for FM.

KENW-TV is Now on Both DirecTV and Dish Network Satellite

Both Dish Network and DirecTV Satellite services are now carrying KENW-TV in the Albuquerque-Santa Fe Designated Market Area (DMA). This DMA includes all counties in New Mexico except Roosevelt, Curry, Quay, Union, and Dona Ana. DirecTV is carrying the KENW-TV High Definitions Channel (HD 3-1) on its HD channel 3 and the KENW-TV Standard Definition (SD 3-2) on channel 3. Dish Network is carrying the KENW-TV SD signal on its channel 3.

The Nielsen Company decides which counties go into the various DMAs. At the present time, there are 210 DMAs in the United States. In population size, the Albuquerque-Santa Fe DMA is the 45th largest in the U.S. because it takes in most of the State of New Mexico. Nielsen determines the counties in a DMA by which television stations the viewers in that county are watching.

By Nielsen rules, DirecTV and Dish Network subscribers in Union, Quay, Curry, and Roosevelt counties will receive the Amarillo PBS station. In all other counties of New Mexico, except for Dona Ana, subscribers will receive PBS from KENW-TV (Portales) and KNME-TV (Albuquerque). Dona Ana is in the El Paso DMA, and those subscribers will receive PBS from KRWG-TV (Las Cruces) and KCOS-TV (El Paso).

11:00 a.m. METROPOLITAN OPERA
 Dec 3 HANDEL: *Rodelinda* NOTE: Begins at 10:30 am
 Dec 10 GOUNOD: *Faust*
 Dec 17 PUCCINI: *Madama Butterfly*
 Dec 24 DONIZETTI: *La Fille du Regiment* NOTE: Begins at 10:00 am
 Dec 31 J. STRAUSS: *Die Fledermaus*
3:00 p.m. CLASSICAL GUITAR ALIVE!
4:00 p.m. A PRAIRIE HOME COMPANION
 Hear the latest news from Lake Wobegon and lots more entertainment.
 Dec 3 Live from the Town Hall in New York, NY
 Dec 10 Live from the Town Hall in New York, NY
 Dec 17 Live from the Town Hall in New York, NY
 Dec 24 To be announced
 Dec 31 Live from the Neil S. Blaisdell Center Concert Hall in Honolulu, HI
6:00 p.m. ALL THINGS CONSIDERED
7:00 p.m. MARIAN MCPARTLAND'S PIANO JAZZ
 Dec 3 Bud Shank, alto saxophonist
 Dec 10 The Music of Marian McPartland, composer

Dec 17 Holiday Memories with Michael Feinstein
 Dec 24 KENW/KMTH-FM presents continuous holiday music from 7:00 pm on the 24th until 11:00 pm on the 25th.
 Dec 31 Stephen Sondheim, composer, lyricist
8:00 p.m. SWINGIN' DOWN THE LANE WITH DAVID MILLER is dedicated to keeping the big band sound alive and well. New generations are thrilling to Benny Goodman, Artie Shaw, Count Basie, Tommy Dorsey, Glenn Miller, and of course the illustrious Duke Ellington.
 Dec 3 Songs of World War II, Part 3
 Dec 10 Songs of World War II, Part 4
 Dec 19 Songs of World War II, Part 5
 Dec 24 KENW/KMTH-FM presents continuous holiday music from 7:00 pm on the 24th until 11:00 pm on the 25th.
 Dec 31 Boppin' in Boston
9:00 p.m. JAZZ AT LINCOLN CENTER RADIO WITH WYNTON MARSALIS
 Dec 3 New Faces, New Strings: Lionel Loueke and Richard Bona

Dec 10 Best of the Cuban Big Bands
 Dec 17 Sweet Honey in the Rock
 Dec 24 KENW/KMTH-FM presents continuous holiday music from 7:00 pm on the 24th until 11:00 pm on the 25th.
 Dec 31 To be announced
10:00 p.m. JAZZSET WITH DEE DEE BRIDGEWATER
 Dec 3 The Jon Faddis Jazz Orchestra of New York at the Kennedy Center
 Dec 10 The First Set: Cyrus Chestnut & Benny Green at Dizzy's Club Coca Cola
 Dec 17 To be announced
 Dec 24 KENW/KMTH-FM presents continuous holiday music from 7:00 pm on the 24th until 11:00 pm on the 25th.
 Dec 31 Two Skirts and a Shirt at the Kennedy Center
11:00 p.m. MUSIC OUT OF THE NIGHT AND INTO THE MORNING until 6:00 a.m. when **Weekend Edition** begins.



BUSINESS FRIENDS

If you would like information about becoming a Business Friend of Public Television or Public Radio by underwriting one or more of our many outstanding programs, please call Rena Garrett, Development/Promotion Director for Public Television, or Carla Chacon, Development Director for Public Radio, at (575) 562-2112 or toll-free at 1-888-FOR-KENW (367-5369).

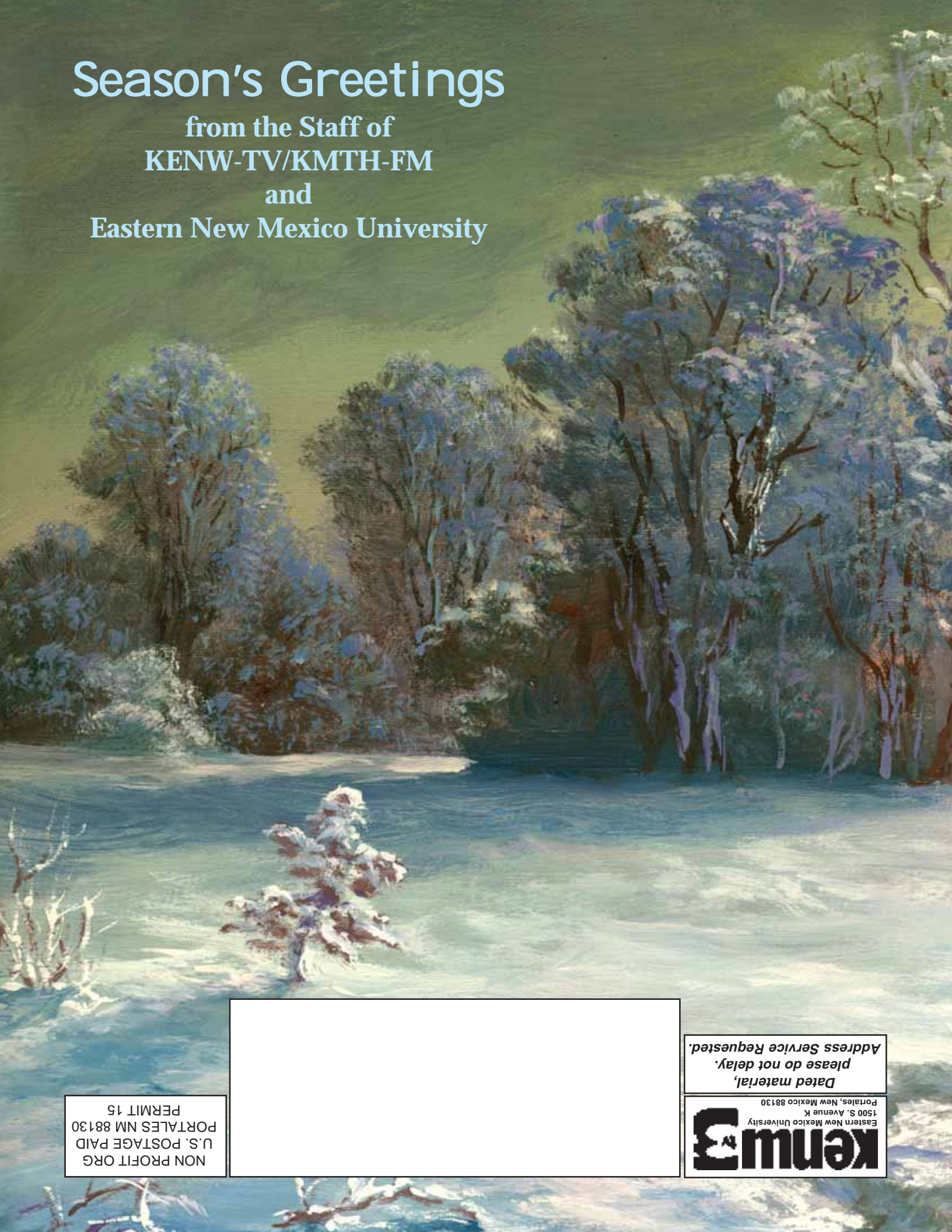
 The Sewing Basket Clovis, NM <i>Quilting Programs</i>	 VALLEY MOWER CLINIC, INC Clovis, NM <i>P. Allen Smith's Garden to Table</i>	John J. Ingram & Associates Midland, TX 1-800-299-6809 <i>Morning Edition, FM</i> <i>Dateline New Mexico, FM</i> <i>Weekend Edition, FM</i> <i>People's Pharmacy, FM</i>	Atwood, Malone, Turner & Sabin Attorneys at Law Roswell, NM <i>Symphonicast</i> <i>All Things Considered, FM</i>	 CJ's Pharmacy... At your Service Portales, NM <i>Family Health, Collectors Corner, Classical Guitar, Mountain Stage, FM</i>	 Xcel Energy <i>Program Support</i>
 EISBACH FACIAL PLASTIC SURGERY PC Albuquerque, NM <i>Antiques Roadshow, Creative Living, Masterpiece, PBS NewsHour</i>	This space could be yours! For Underwriting opportunities, please call toll-free (888) 367-5369. Ask for Rena for TV, Carla for FM.	The Ruidoso Physical Therapy Clinic Ruidoso, NM <i>Morning Edition, Health Matters, Living on Earth, Romantic Hour, Symphonies, FM</i>	 Roosevelt County Electric Cooperative Portales, NM <i>Antiques Roadshow</i>	 NEW MEXICO AMERICAN WATER <i>Nature</i>	CHAVES COUNTY FARM AND LIVESTOCK BUREAU Dexter and Roswell, NM <i>America's Heartland</i>
 MESCALEROS COFFEE Tucuman, NM <i>Weekend Edition, FM</i>	Hinkle, Hensley, Shanor & Martin, L.L.P. Roswell, Santa Fe, NM; Austin, Midland, TX <i>Morning Edition, FM</i> <i>Prairie Home Companion, FM</i>	 Muleshoe State Bank Muleshoe, TX <i>Nature</i>	 Goodwill Industries <i>Morning Edition, FM</i> <i>All Things Considered, FM</i>	James Polk Stone Community Bank Clovis, Hagerman, Hobbs, Portales, Roswell <i>Austin City Limits</i>	Living Desert Zoo & Gardens State Park <i>Open Every Day Except Christmas</i> Carlsbad, NM <i>Austin City Limits, Nature, PBS NewsHour</i>
Maddox, Holloman & Kirksey, P.C., Attorneys and Counselors at Law Hobbs, NM <i>Morning Edition</i> <i>All Things Considered, FM</i>	 SECURITY STATE BANK Farwell, TX <i>Antiques Roadshow</i>	This space could be yours! For Underwriting opportunities, please call toll-free (888) 367-5369. Ask for Rena for TV, Carla for FM.	 Ruidoso, NM	First Presbyterian Church of Roswell Roswell, NM <i>With Heart and Voice, FM</i>	 THE BOX Clovis and Portales <i>Wait, Wait...Don't Tell Me, FM</i>
 Names and Numbers Telephone Book <i>Evening News/Public Affairs Programming</i> <i>News 3 New Mexico</i>	NM Department of Health & Division of Vocational Rehabilitation Santa Fe, NM <i>Public Health Update, FM</i>	 EASTERN NEW MEXICO UNIVERSITY Portales, NM <i>Austin City Limits</i>	 YMCA OF CENTRAL NEW MEXICO <i>Dateline New Mexico, FM</i> <i>Parents Journal, Music, FM</i>	 Featherstone Development Corporation Roswell, NM <i>Nature, Nightly Business Report, Stargazer</i>	Penasco Valley Telecommunications <i>Health Show, Car Talk, Mountain Stage</i> FM
 Clovis NEWS JOURNAL Clovis, NM <i>This Old House</i>	 WILL FERGUSON & ASSOCIATES Albuquerque, NM <i>BBC World News</i> <i>PBS NewsHour</i>	STATE FARM INSURANCE <i>Car Talk, FM</i> <i>Coaches Corner, FM</i>	This space could be yours! For Underwriting opportunities, please call toll-free (888) 367-5369. Ask for Rena for TV, Carla for FM.	 Las Cruces, NM <i>America's Heartland</i>	 News-Tribune Portales, NM <i>Austin City Limits</i>

Season's Greetings

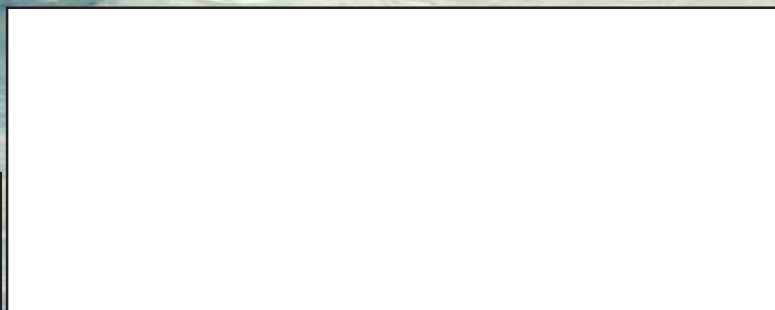
from the Staff of
KENW-TV/KMTH-FM

and

Eastern New Mexico University



NON PROFIT ORG
U.S. POSTAGE PAID
PORTALES NM 88130
PERMIT 15



*Dated material,
please do not delay.
Address Service Requested.*

Kenw3
Eastern New Mexico University
1500 S. Avenue K
Portales, New Mexico 88130